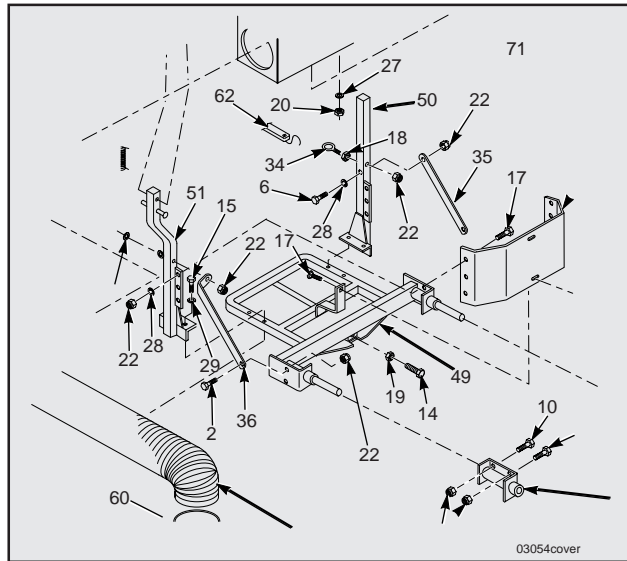


SCAG[®]

POWER EQUIPMENT

MODEL GC-STT-6KH



THIS MANUAL CONTAINS THE OPERATING INSTRUCTIONS AND SAFETY INFORMATION FOR YOUR SCAG ACCESSORY. READING THIS MANUAL WILL PROVIDE YOU WITH MAINTENANCE AND ADJUSTMENT PROCEDURES TO KEEP YOUR ACCESSORY PERFORMING TO MAXIMUM EFFICIENCY. THE SPECIFIC MODELS THAT THIS BOOK COVERS ARE CONTAINED ON THE INSIDE COVER. BEFORE OPERATING YOUR MACHINE, PLEASE READ ALL THE INFORMATION ENCLOSED.

OPERATOR'S MANUAL



WARNING

FAILURE TO FOLLOW SAFE OPERATING PRACTICES MAY RESULT IN SERIOUS INJURY.

- * Keep all safety shields in place.
- * Before performing any maintenance or service, stop the machine and remove the spark plug wire.
- * If a mechanism becomes clogged, stop the engine before cleaning.
- * Keep hands, feet and clothing away from power-driven parts.
- * Read this manual completely as well as the Operator's Manual that came with your mower.
- * Keep others off the tractor (only one person at a time).

REMEMBER - YOUR MOWER IS ONLY AS SAFE AS THE OPERATOR!

Hazard control and accident prevention are dependent upon the awareness, concern, prudence, and proper training of the personnel involved in the operation, transport, maintenance, and storage of the equipment.

This manual covers the operating instructions
and illustrated parts list for:

GC-STT-6KH with a serial number of 4590001-4599999

Always use the entire serial number listed on the serial number tag when referring to this product.

SCAG[®]

POWER EQUIPMENT

TABLE OF CONTENTS

SUBJECT	PAGE
1.1 Introduction	1
1.2 Direction Reference	1
1.3 Servicing The Engine	1
2.1 Safety and Operating Instructions	1
3.1 Assembly Instructions	2
3.2 Discharge Boot Assembly	2
3.3 Catcher Frame Assembly	3
3.4 Bucket Cover Assembly	4
3.5 Engine Mounting	4-5
3.6 Catcher Hose Installation	5
3.7 Weight Bar Installation	5
Illustrated Parts List	6-7
Limited Warranty Statement.....	Inside Back Cover



1.1 INTRODUCTION

This manual has been prepared to provide the information you need to correctly assemble, operate, and maintain this grass catcher. Read it carefully and keep it for future reference.

The replacement of any part on this product by other than the manufacturer's authorized replacement part may adversely affect the performance, durability or safety of this product.

USE OF OTHER THAN ORIGINAL SCAG REPLACEMENT PARTS WILL VOID THE WARRANTY.

If additional information or service is needed that is not outlined in this manual, please contact your Scag Power Equipment dealer. Scag dealers are trained in the latest service methods and carry a full line of Scag replacement parts.

When ordering parts, always provide the complete model and serial number of your catcher.

All information provided in this manual is based upon information available at the time of printing. Scag Power Equipment reserves the right to make changes at any time without notice or obligation.

1.2 DIRECTION REFERENCE

The "Right" and "Left", "Front" and "Rear" of the machine are referenced from the normal operating position.

1.3 SERVICING THE ENGINE

The detailed servicing of the engine is not covered in this manual. For service of the engine it is important to contact your Scag Dealer or an authorized servicing agent of the engine manufacturer. **Any unauthorized work done on the engine will void the warranty.**

2.1 SAFETY AND OPERATING INSTRUCTIONS

-Note-

To avoid personal injury, it is imperative that all safety instructions be observed.

1. Read this operator's manual and the operator's manual that is supplied with the machine this attachment is used on.

A replacement manual is available from your authorized Scag Service Dealer or by contacting: Scag Power Equipment, Service Department at P.O. Box 152, Mayville, WI 53050. Please indicate the complete model and serial number of your Scag product when ordering a replacement manual.

2. Never operate your mower without the complete grass catcher, all guards and covers installed, or the discharge chute properly installed.
3. Before removing the grass bucket, disengage the mower, stop the engine on both the mower and the grass catcher, and wait for all movement to stop.
4. **ALWAYS** turn the engine **OFF**, remove the key and wait for all movement to stop before servicing or cleaning the mower or the grass catcher.
5. Do not modify or alter any component of the grass catcher attachment.
6. Do not allow any passengers to ride on the grass catcher attachment or on the mower.
7. To reduce the risk of fire, keep the engine clean and free of debris, or excess lubricants.
8. **DO NOT** add fuel to a running or hot engine. Turn the engine **OFF** and allow it to cool before re-fueling.

3.1 ASSEMBLY INSTRUCTIONS

-Note-

For any instructions referring to an item number, refer to the illustrated parts breakdown on pages 6 and 7. Use the illustrated parts list as a reference when following the assembly instructions.

1. Remove all packaging materials. Lay out the mounting hardware and the catcher assembly parts for easy access.

3.2 DISCHARGE BOOT ASSEMBLY

1. If your cutter deck does not have the two discharge chute mounting holes, locate and center punch the two hole locations in the cutter deck as shown in figure 1. Drill the holes at the marked locations using a 1/8" drill bit, then finish drilling using a 13/32" drill bit.

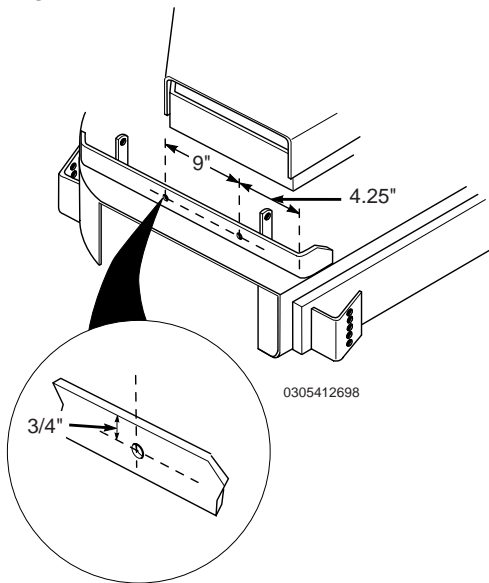


Figure 1, Hole Locations

2. Install the boot mounting support tabs (items 40 & 41) to the cutter deck, using (1) 5/16-18 x 1" bolt, (1) 5/16-18 x 1-1/4" bolt and (2) 5/16-18 elastic stop nuts. Do not tighten the bolts at this time.
3. Install the boot mounting bracket (item 39) to the boot (item 66) in the holes toward the front of the boot, using (2) 3/8-16 x 1" bolts, (2) 3/8" flat washers and (2) 3/8-16 elastic stop nuts.

-Note-

If you are installing the catcher to a machine with a 52" cutter deck, you must install the filler plate (item 42) to the boot.

4. Install the filler plate (item 42) to the boot (52" models only) in the rearward holes in the boot using (2) 5/16-18 x 3/4" bolts, (2) 5/16" flat washers and (2) 5/16-18 elastic stop nuts.

-Note-

If you are installing the catcher to a machine with a Bahia cutter deck you must also install the filler plate (item 43) to the cutter deck.

5. Hold the filler plate to the front of the cutter deck as shown in figure 2. Center punch the two hole locations in the cutter deck. Drill the holes at the marked locations using a 1/8" drill bit, then finish drilling using a 9/32" drill bit.

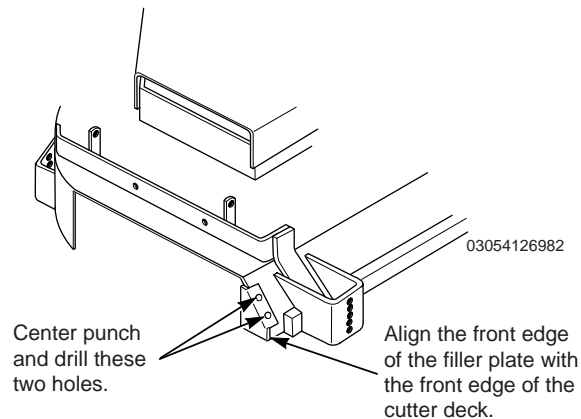


Figure 2, Bahia Filler Plate

6. Install the deck filler plate (item 43) to the inside front of the Bahia deck (52" & 61" Bahia decks only), using (2) 1/4-20 x 3/4" bolts and (2) 1/4" x 20 elastic stop nuts.
7. Install the boot to the cutter deck by aligning the holes in the boot mounting bracket with the holes in the boot mounting support tabs.
8. Secure the boot to the cutter deck by inserting the chute latch pin (item 45) through the holes in the support tabs and the boot mounting bracket. Secure the pin using the cotter pin provided in the hardware package. Tighten the boot mounting support tab bolts.

3.3 CATCHER FRAME ASSEMBLY

1. On the LH side of the machine remove the two bolts securing the pump mounting plate to the machine. Align the holes in the hitch bracket weldment (item 53) with the holes in the machine frame. Install (2) 3/8-16 x 1-1/4" bolts into the rear holes of the frame and the hitch bracket. Install (2) 3/8-16 x 1" bolts into the front holes. Secure using four 3/8-16 elastic stop nuts.
- Note-**
Install the hitch bracket mounting hardware from the inside of the machine through the machine frame and then through the hitch bracket. This will prevent the hardware from interfering with the linkage.
2. Repeat step 10 on the RH side of the machine.
 3. Install the 1/2-13 nut (item 19) onto the 1/2-13 x 1-1/2" bolt (item 14). Thread the bolt and nut assembly into the boss on the catcher frame (item 49). *Do not tighten at this time.*
 4. Align the pins on the catcher frame (item 49) with the hitch brackets. Slide the catcher frame into the tubes on the hitch brackets and secure using the quick pins (item 32).
 5. Adjust the 1/2-13 nut and bolt assembly, that was installed onto the catcher frame in step 3 , so the head of the bolt rests against the belt cover on the machine. Tighten the nut against the boss to secure the bolt from moving.
 6. Align the holes in the RH upright post weldment (item 51) with the holes on the RH side of the catcher frame. Place (2) 3/8" flat washers onto (2) 3/8-16 x 3-1/2" bolts and insert the bolts into the holes of the upright post and the catcher frame.
 7. Install the RH brace (item 36) to the RH upright post. Secure using (1) 5/16-18 x 2-1/2" bolt, (1) 5/16" flat washer and (1) 5/16-18 elastic stop nut. Secure the other end of the RH brace to the catcher frame using (1) 5/16-18 x 1" bolt and (1) 5/16-18 elastic stop nut.
 8. Slide the engine support frame (item 54) under the catcher frame and install onto the bolts that are inserted into the RH upright post and the catcher frame. Secure using (2) 3/8-16 elastic stop nuts and (2) 3/8" flat washers.
 9. Install the LH upright support weldment (item 50) to the LH side of the catcher frame. Insert (2) 3/8-16 x 3-1/2" bolts and (2) 3/8" flatwashers into the holes of the upright post, the catcher frame and the engine support frame. Secure using (2) 3/8-16 elastic stop nuts and (2) 3/8" flat washers.
 10. Install the LH brace (item 35) to the LH upright post. Secure using (1) 5/16-18 x 2" bolt, (1) 5/16" flat washer and (1) 5/16-18 elastic stop nut. Secure the other end of the LH brace to the catcher frame using (1) 5/16-18 x 1" bolt and (1) 5/16-18 elastic stop nut.
 11. Install (1) 5/16-18 nut onto the eyebolt (item 34). Install the eyebolt through the LH upright support and secure with (1) 5/16-18 elastic stop nut.
 12. Install the heatshield (item 37) to the catcher frame using (1) 5/16-18 x 3/4" carriage bolt, (1) 5/16" flat washer and (1) 5/16-18 elastic stop nut.
 13. Secure the 2 heatshields to the two upright supports using (6) 5/16-18 x 3/4" carriage bolts, (6) 5/16-18 elastic stop nuts. The heatshields will mount on the outside of the supports and have an air space between them when installed properly.
 14. Slide the bucket (item 57) onto the catcher frame and secure using the rubber strap (item 62). Hook one end of the rubber strap into the washer welded onto the RH upright support and the other end into the eyebolt bolted onto the LH upright support.

3.4 BUCKET COVER ASSEMBLY

1. Align the holes in the filter frame (item 74) with the holes in the molded top (item 70). Be sure the venting slots are pointed away from the operator. (see figure 3)
2. Align the three holes in the cover bracket weldment (item 56) with the correct three holes in the filter frame and the molded top as shown in figure 3.

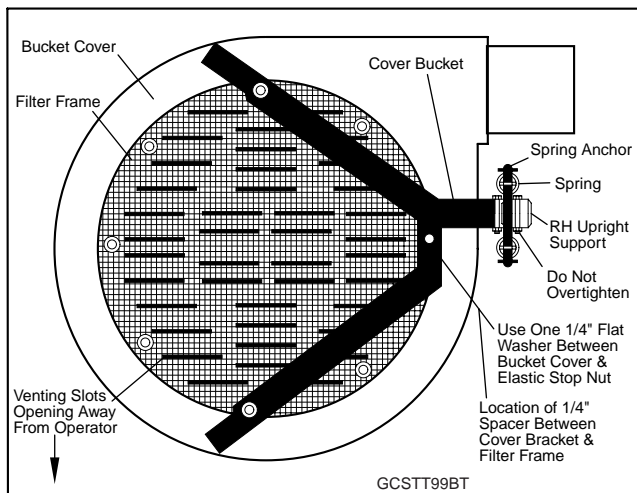


Figure 3, Bucket Top

3. Install the 1/4" spacer (item 44) between the cover bracket weldment and the filter frame at the hole closest to where the cover bracket mounts to the RH upright support. Insert (1) 1/4-20 x 1" bolt through the cover bracket, 1/4" spacer, filter frame and molded top. Secure using (1) 1/4" flat washer and (1) 1/4-20 elastic stop nut.
4. Finish securing the cover bracket and the filter frame to the molded top using the (7) 1/4-20 x 1" bolts, (14) 1/4" flat washers, and (7) 1/4-20 elastic stop nuts. Use one flat washer by the head of each bolt and one by each elastic stop nut.
5. Install the grass filter (item 73) around the filter frame. The elastic in the filter will go around the lip that circles the filter frame located inside the molded top.

6. Align the rear set of holes in the cover bracket weldment with the holes in the RH upright support. Secure the cover bracket to the RH support using (1) 3/8-16 x 2-1/2" bolt, (2) 3/8" flat washers and (1) 3/8-16 elastic stop nut. **Do not overtighten.** The cover must be allowed to pivot on the upright support.



7. Pivot the molded top up and back allowing the two spring anchors to become close enough to install the two springs (item 69) onto the spring anchors. Place the springs on the outside edge of the anchors, so the bolts do not interfere. Pivot the molded top down onto the catcher bucket.
8. Install (1) 3/8-16 x 2-1/2" bolt into the set of holes located next to the pivot bolt in the cover bracket weldment. Secure using (1) 3/8-16 elastic stop nut.

-Note-

This bolt must be installed to prevent the bucket cover from flipping over.

9. Install the container latch (item 72) onto the LH side of the molded top. Secure using (2) 1/4-20 x 1" bolts, (4) 1/4" flat washers and (2) 1/4-20 elastic stop nuts. Adjust the latch as necessary to insure a tight fit between the cover and the bucket.

3.5 ENGINE MOUNTING

1. Align the holes in the engine guard weldment (item 55) with the mounting holes in the engine. Insert (4) 5/16-18 x 1-3/4" bolts through the holes in the engine and the engine guard weldment.

2. Align the bolts that were inserted through the engine and engine guard weldment with the holes in the engine mounting frame (item 54). Insert all four bolts into the holes in the engine mounting frame and secure using (4) 5/16-18 elastic stop nuts.
3. Attach the engine exhaust deflector (item 64) with the two screws provided, so that the exhaust is deflected downward and at an angle away from the operator.
4. Install the blower housing weldment (item 47) to the engine using (4) 5/16-24 x 1" bolts and (4) 5/16" lockwashers.
5. Install the fan assembly (item 46) and key (item 31) to the engine crankshaft and secure using (1) 7/16-20 x 2" fine thread bolt, (1) 7/16" lock washer and (1) 7/16" flat washer. Torque the retaining bolt to 55 ft.lbs.
6. Install the inlet adaptor (item 48) to the blower housing using (6) 5/16-18 wing nuts.

-Note-

In order to prevent hot exhaust blowing on the grass catcher engine you must remove the exhaust pipe that is mounted to the muffler on the main engine.

3.6 CATCHER HOSE INSTALLATION

1. Slide (1) 6-1/2" hose clamp (item 60) onto one end of the 6" hose (item 58).
2. Slide (1) 6-1/2" hose clamp (item 60) onto the other end of the 6" hose (item 58) and install onto the blower housing outlet and secure using the hose clamp.
3. Slide (2) 8-5/8" hose clamps onto the ends of the 8" hose (item 59).

4. Install the 8" inlet hose onto the boot and secure using the hose clamp. Install the free end of the 8" hose onto the inlet adaptor and secure using the hose clamp.

-Note-

When installing the STT Catcher onto a 52" cutter deck, Approximately 6" of the hose will need to cut off of the 8" inlet hose.

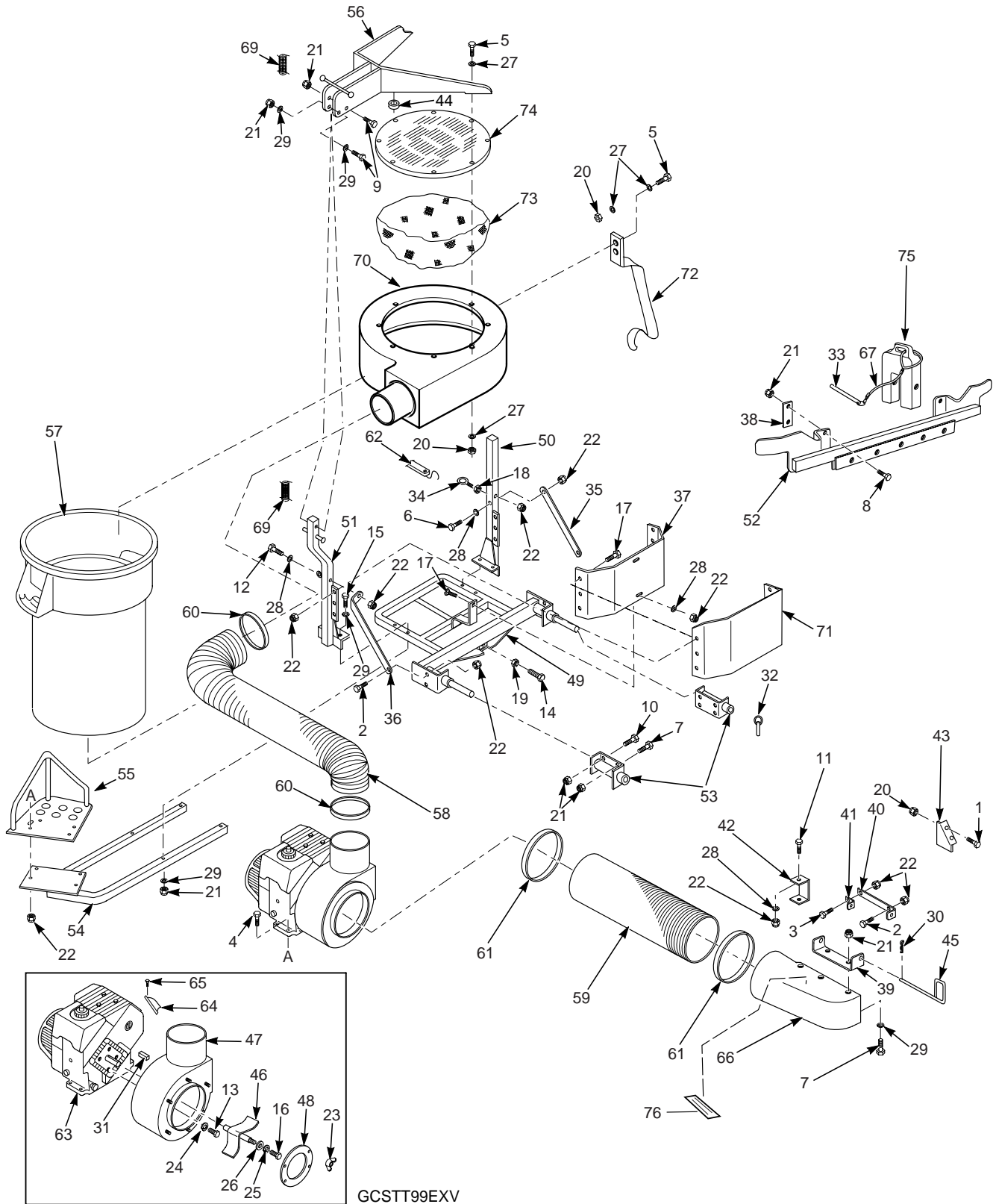
3.7 WEIGHT BAR INSTALLATION

1. Install the weight support bar (item 52) to the front of the machine by resting it directly on top of the caster support arms and sliding it tight against the frame of the machine. Secure the weight bar to the machine using (2) bar clamps (item 38), (4) 3/8-16 x 1-1/2" bolts and (4) 3/8-16 elastic stop nuts.
2. Install the weight assemblies (item 75) to the weight support bar and secure them to the bar using the 1/2" x 6-1/4" pin and lanyard (item 33 & 67).

-Note-

Additional weight assemblies are available through your Scag dealer.

GC-STT-6KH GRASS CATCHER



GCSTT99EXV

GC-STT-6KH GRASS CATCHER

Ref. No.	Part Number	Description	Ref. No.	Part Number	Description
1	04001-01	Bolt, Hex Head, 1/4-20 x 3/4"	39	422588	Mounting Bracket, Chute
2	04001-09	Bolt, Hex Head, 5/16-18 x 1"	40	422589	Support, Chute Mounting
3	04001-10	Bolt, Hex Head, 5/16-18 x 1-1/4"	41	422590	Mounting Tab, Chute
4	04001-12	Bolt, Hex Head, 5/16-18 x 1-3/4"	42	422591	Filler Plate, Chute-52" Deck Only
5	04001-14	Bolt, Hex Head, 1/4-20 x 1"	43	422592	Filler Plate, Chute-Bahia Deck Only
6	04001-17	Bolt, Hex Head, 5/16-18 x 2"	44	43063	Spacer
7	04001-19	Bolt, Hex Head, 3/8-16 x 1"	45	44131	Latch Pin, Chute
8	04001-20	Bolt, Hex Head, 3/8-16 x 1-1/2"	46	45077	Fan
9	04001-31	Bolt, Hex Head, 3/8-16 x 2-1/2"	47	45080	Blower Housing Weldment
10	04001-32	Bolt, Hex Head, 3/8-16 x 1-1/4"	48	45081	Adapter Weldment, Blower Inlet
11	04001-38	Bolt, Hex Head, 5/16-18 x 3/4"	49	451023	Frame Weldment, Catcher
12	04001-53	Bolt, Hex Head, 5/16-18 x 2-1/2"	50	451024	Upright Post Weldment, LH
13	04001-56	Bolt, Hex Head, 5/16-24 x 1"	51	451025	Upright Post Weldment, RH
14	04001-71	Bolt, Hex Head, 1/2-13 x 1-1/2"	52	451026	Support Weldment, Weights
15	04001-77	Bolt, Hex Head, 3/8-16 x 3-1/2"	53	451027	Hitch Bracket Weldment
16	04001-88	Bolt, Hex Head, 7/16-20 x 2"	54	45371	Engine Mounting Frame
17	04003-12	Carriage Bolt, 5/16-18 x 3/4"	55	45374	Engine Guard Weldment
18	04020-03	Nut, 5/16-18"	56	45429	Bracket Weldment, Cover
19	04020-07	Nut, 1/2-13"	57	48133	Bucket
20	04021-08	Nut, Elastic Stop, 1/4-20"	58	48135-04	Hose, 6" Dia x 34"
21	04021-09	Nut, Elastic Stop, 3/8-16"	59	48135-09	Hose, 8" Dia x 53"
22	04021-10	Nut, Elastic Stop, 5/16-18"	60	48136-01	Clamp, 6-1/2" Max Dia
23	04022-02	Wingnut, Elastic Stop, 5/16-18"	61	48136-02	Clamp, 8-5/8" Max Dia
24	04030-03	Lockwasher, 5/16"	62	48137-01	Rubber Strap-34"
25	04030-05	Lockwasher, 7/16"	63	481564	Engine, 6HP Kohler
26	04040-11	Flat Washer, 7/16"	64	481697	Exhaust Deflector, Engine
27	04040-14	Flat Washer, 1/4"	65	481698	Screw, Kohler Special
28	04040-15	Flat Washer, 5/16"	66	481734	Boot
29	04041-07	Flat Washer, 3/8"	67	481737	Lanyard, Weight Pin
30	04062-02	Hair Pin Cotter, .080 x 1.19"	68	48236	Decal, Danger
31	04063-06	Key, 1/4 x 1/4 x 1-1/2"	69	48734	Spring
32	04066-03	Quick Pin	70	481745	Molded Top
33	04067-06	Pin, 1/2 x 6-1/4"	71	422725	Heat Shield
34	04070-04	Eyebolt, 5/16-18 x 2-3/4"	72	48737	Container Latch
35	422578	Brace, LH	73	48738	Filter, Open Mesh
36	422579	Brace, RH	74	48739	Support, Filter
37	422580	Heatshield	75	9009	Weight Assembly, GC-STT-6KH
38	422586	Clamp, Bar	76	48236	Decal, Danger

-Note-

Some of the hardware is common hardware and you may purchase it locally. Be sure that all bolts purchased locally are a grade 5.

LIMITED WARRANTY- COMMERCIAL ACCESSORY

Any part of the Scag commercial accessory manufactured by Scag and found, in the reasonable judgment of Scag, to be defective in material or workmanship, will be repaired or replaced by an Authorized Scag Service Dealer without charge for parts and labor.

The Scag accessory, including any defective part, must be returned to an Authorized Scag Service Dealer within the warranty period. The expense of delivering the accessory to the dealer for warranty work and the expense of returning it back to the owner after repair or replacement will be paid for by the owner. Scag's responsibility in respect to claims is limited to making the required repairs or replacements, and no claim of breach of warranty shall be cause for cancellation or rescission of the contract of sale of any Scag machine. Proof of purchase will be required by the dealer to substantiate any warranty claim. All warranty work must be performed by an Authorized Scag Service Dealer.

This warranty is limited to 90 days from the date of original retail purchase for any Scag accessory that is used for commercial purposes, or any other income-producing purpose including rental use.

This warranty does not cover any accessory that has been subject to misuse, neglect, negligence, or accident, or that has been operated in any way contrary to the operating instructions as specified in the Operator's Manual. The warranty does not apply to any damage to the accessory that is the result of improper maintenance, or to any accessory or parts that have not been assembled or installed as specified in the Operator's Manual.

The warranty does not cover any accessory that has been altered or modified. In addition, the warranty does not extend to repairs made necessary by normal wear, or by the use of parts or accessories which, in the reasonable judgment of Scag, are either incompatible with the Scag mower or adversely affect its operation, performance or durability. This warranty does not cover engines and electric starters, which are warranted separately by their manufacturer.

Scag Power Equipment reserves the right to change or improve the design of any accessory without assuming any obligation to modify any accessory previously manufactured.

All other implied warranties are limited in duration to the 90 day warranty period. Accordingly, any such implied warranties including merchantability, fitness for a particular purpose, or otherwise, are disclaimed in their entirety after the expiration of the appropriate ninety day warranty period. Scag's obligation under this warranty is strictly and exclusively limited to the repair or replacement of defective parts and Scag does not assume or authorize anyone to assume for them any other obligation. Some states do not allow limitations on how long an implied warranty lasts, so the above limitation may not apply to you.

Scag assumes no responsibility for incidental, consequential or other damages including, but not limited to, expense for gasoline, oil, expense of delivering the machine to an Authorized Scag Service Dealer and expense of returning it back to the owner, mechanic's travel time, telephone or telegram charges, rental of a like product during the time warranty repairs are being performed, travel, loss or damage to personal property, loss of revenue, loss of use of the mower, loss of time, or inconvenience. Some states do not allow the exclusion or limitation of incidental or consequential damages, so the above limitation or exclusion may not apply to you.

This warranty gives you specific legal rights, and you may also have other rights which vary from state to state.

© 1998
SCAG POWER EQUIPMENT
DIVISION OF METALCRAFT OF MAYVILLE, INC

PART NO. 03065
PRINTED 8/98
PRINTED IN USA