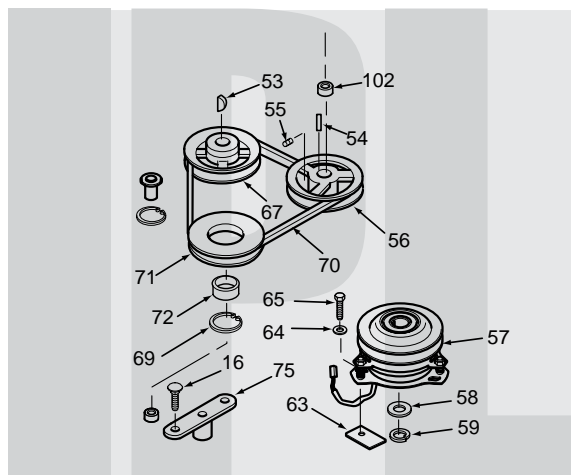


# SCAG<sup>®</sup>

## POWER EQUIPMENT



# MODEL SW

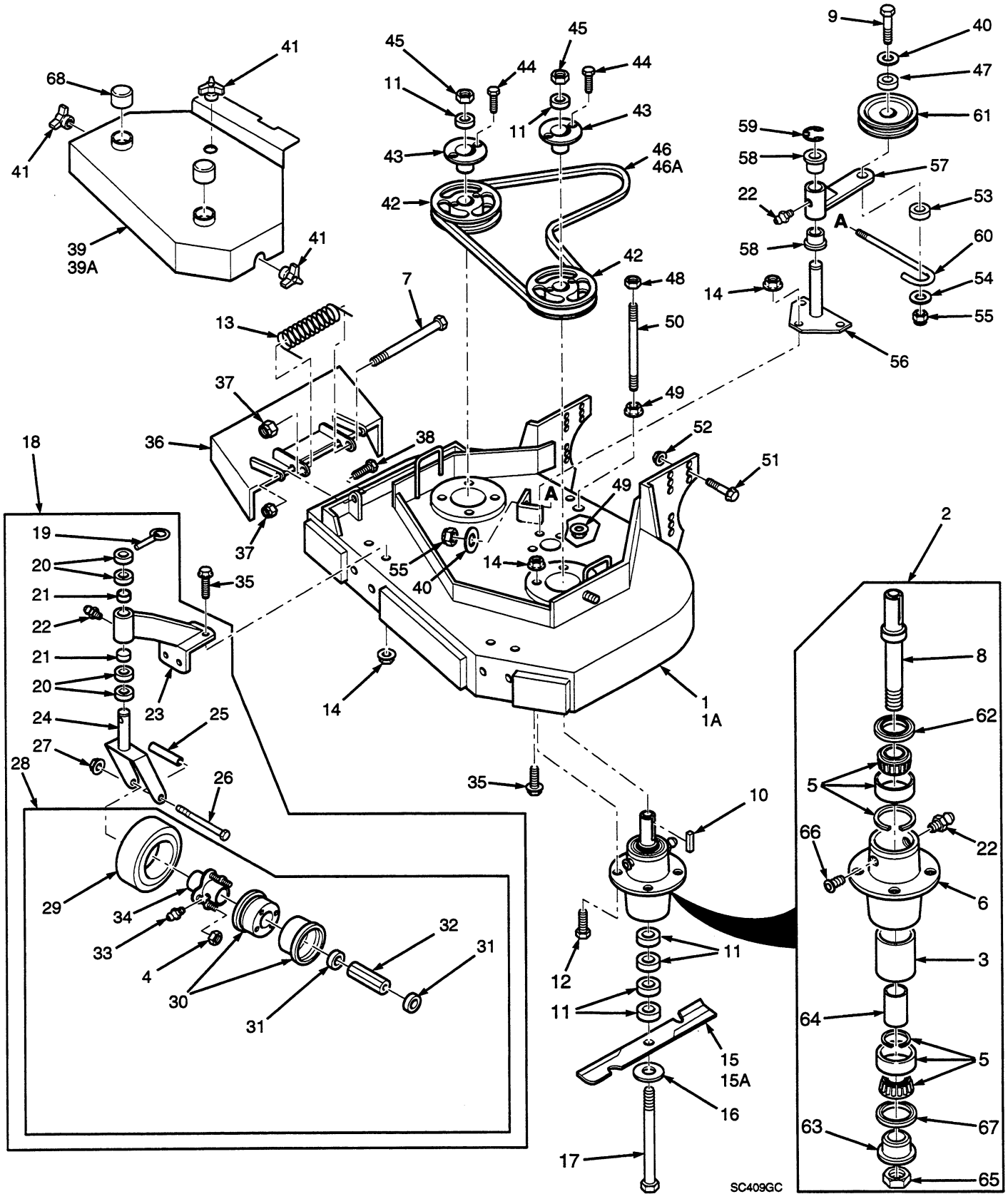
## ILLUSTRATED PARTS LIST

**THIS MANUAL CONTAINS THE ILLUSTRATED PARTS LIST FOR MODELS:**

**SW36-13KA** with a serial number of 24370001 to 24370090  
**SW48-14KA** with a serial number of 24570001 to 24570147



## 32" & 36" CUTTER DECKS



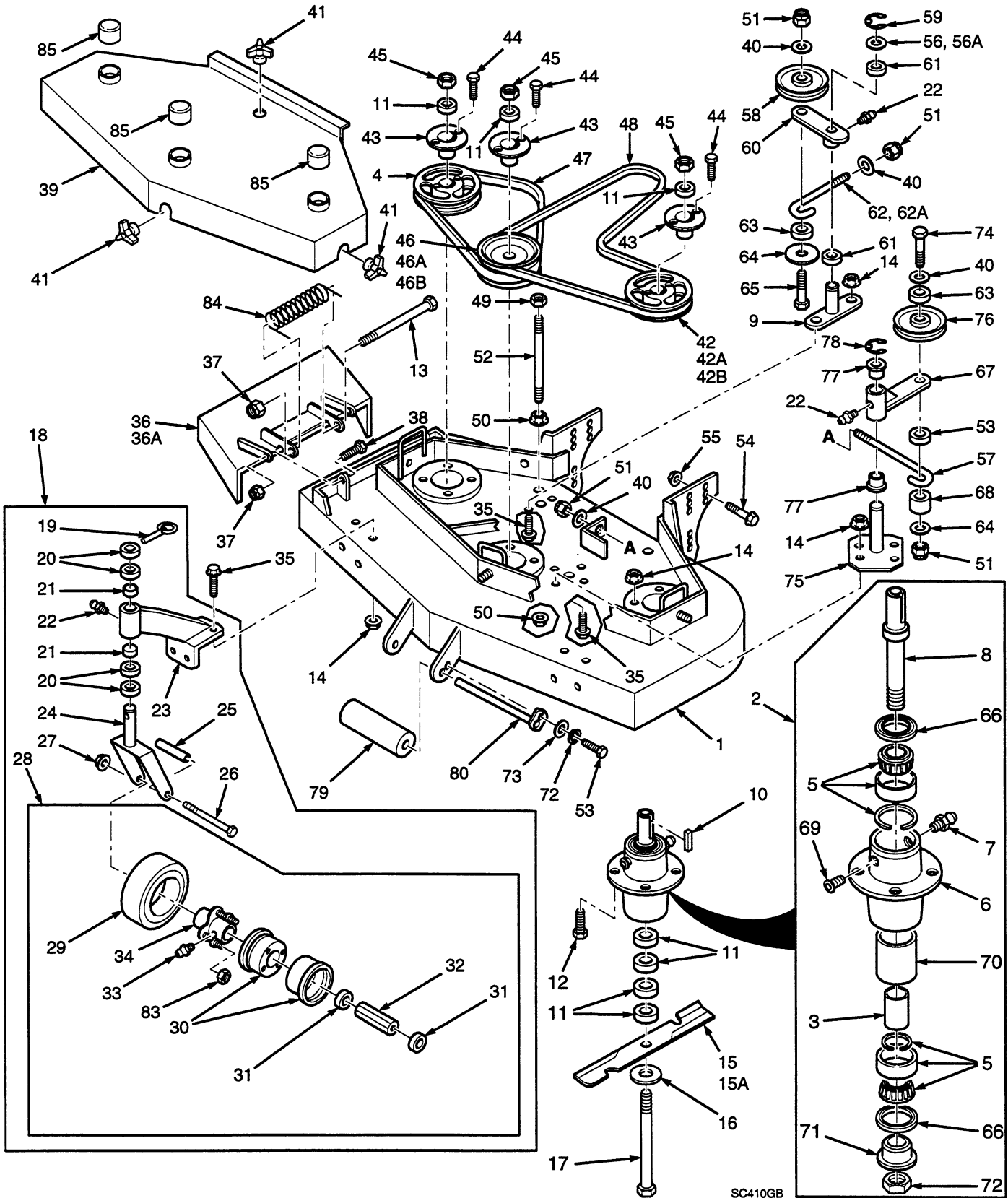
SC409GC

## 32" & 36" CUTTER DECKS

Ref. Part No. Number	Description	32	36	Ref. Part No. Number	Description	32	36
1	46849	Cutter Deck (Includes Decals)	x	42	48924	Pulley	x x
1A	46850	Cutter Deck (Includes Decals)	x	43	48926	Tapered Hub	x x
2	46631	Cutter Spindle Assy.	x	44	04001-01	Hex Hd. Bolt, 1/4-20 x 3/4"	x x
3	43312	Spacer, Outside	x	45	04020-09	Hex Nut, 5/8-11	x x
4	48307-08	Tapered Nut, 5/16-24	x	46	48278	Belt, Blade Drive	x
5	481022	Tapered Bearing (Two)	x	46A	48204	Belt, Blade Drive	x
6	43294	Spindle Housing	x	47	43077	Spacer	x x
7	04001-108	Bolt, 5/16-18 x 4-1/4" Hex Head	x	48	04021-05	Hex Nut, 3/8-16 Center Locknut	x x
8	43298	Spindle Shaft	x	49	04019-04	Nut, 3/8-16 Serrated Flange	x x
9	04001-77	Bolt, 3/8-16 x 3-1/2" Hex Head	x	50	04004-02	Support, Belt Cover	x x
10	04063-08	Key, 1/4 x 1/4 x 2"	x	51	04017-42	Cpscrw, 7/16-14 x 1" Ser.Fig. HH	x x
11	43278	Spacer, Cutter Blade - Small	x	52	04019-05	Nut, 7/16-14 Serrated Flange	x x
12	04001-10	Bolt, 5/16-18 x 1-1/4" Hex Head	x	53	43277	Spacer, J-Hook	x x
13	481050	Spring, Chutte Return	x	54	04041-12	Washer, 3/8 x 1-1/2 x 16 GA	x x
14	04019-03	Nut 5/16-18 Serrated Flange	x	55	04021-09	Elastic Stop Nut, 3/8-16	x x
15	48110	Cutter Blade 16-1/2"	x	56	45423	Idler Pivot	x x
15	48108	Cutter Blade, 18"	x	57	46748	Idler Arm Assy. (Inc. 22 & 58)	x x
15A	48184	Cutter Blade 16-1/2 Hi Lift	x	58	48100-02	Bronze Bearing	x x
15A	48185	Cutter Blade, 18 Hi Lift	x	59	04050-05	Retaining Ring, 1-1/8" Ext. "E"	x x
16	04040-10	Flatwasher, 5/8 W	x	60	44078	J-Hook	x x
17	04001-41	Hex Hd. Bolt, 5/8-11 x 9-1/2"	x	61	48269	Idler Pulley, Belt Clutch	x x
18	46079	Caster Assembly (Inc.19-28)	x	62	481024	Seal, Cutter Spindle	x x
19	04066-01	Quick Pin	x	63	43297	Spindle Bushing	x x
20	43037-01	Spacer, Caster Yoke, 1/2" long	x	64	43296	Spacer, Inside	x x
21	48100-01	Bronze Bearing	x	65	481035	Nut,	x x
22	48114-04	Grease Fitting	x	66	48677	Relief Fitting, Cutter Spindle	x x
23	46082	Support Assembly (Inc. 21-23)	x	67	481025	Seal, Cutter Spindle	x x
24	45006	Caster Yoke	x	68	48098	Spindle Shield	x x
25	43022	Sleeve, Caster Wheel Bearing	x				
26	04001-37	Hex Hd. Bolt, 1/2-13 x 5-1/2"	x				
27	04021-07	Elastic Stop Nut, 1/2-13	x				
28	48307	Wheel Assy. (Inc.4, 29-34)	x				
29	48307-02	Tire only, Caster Wheel	x				
NS	48006-03	Inner Tube only	x				
30	48307-04	Rim Pair, Caster Wheel	x				
31	48006-07	Retainer, Bearing, Caster Wheel	x				
32	48006-06	Roller Bearing, Caster Wheel	x				
33	48114-03	Grease Fitting, 45 degree 1/4-28	x				
34	48006-05	Hub Assembly	x				
35	04017-16	Cpscrw, 5/16-18 x 3/4" Ser.Fig. HH	x				
36	46725	Discharge Chute	x				
37	04021-10	Hex Nut, 5/16-18 Elastic Stop	x				
38	04001-09	Hex Hd Bolt, 5/16-18 x 1"	x				
39	46853	Belt Cover Assy (Includes Decal)	x				
39A	46797	Belt Cover Assy (Includes Decal)	x				
40	04041-07	Flat Washer, 3/8" Special	x				
41	04029-03	Wing Nut, 3/8-16	x				

\* Common hardware which should be purchased locally. All bolts are Grade 5 plated, all other fasteners zinc plated.

## 48", 52", 61", & 72" CUTTER DECKS

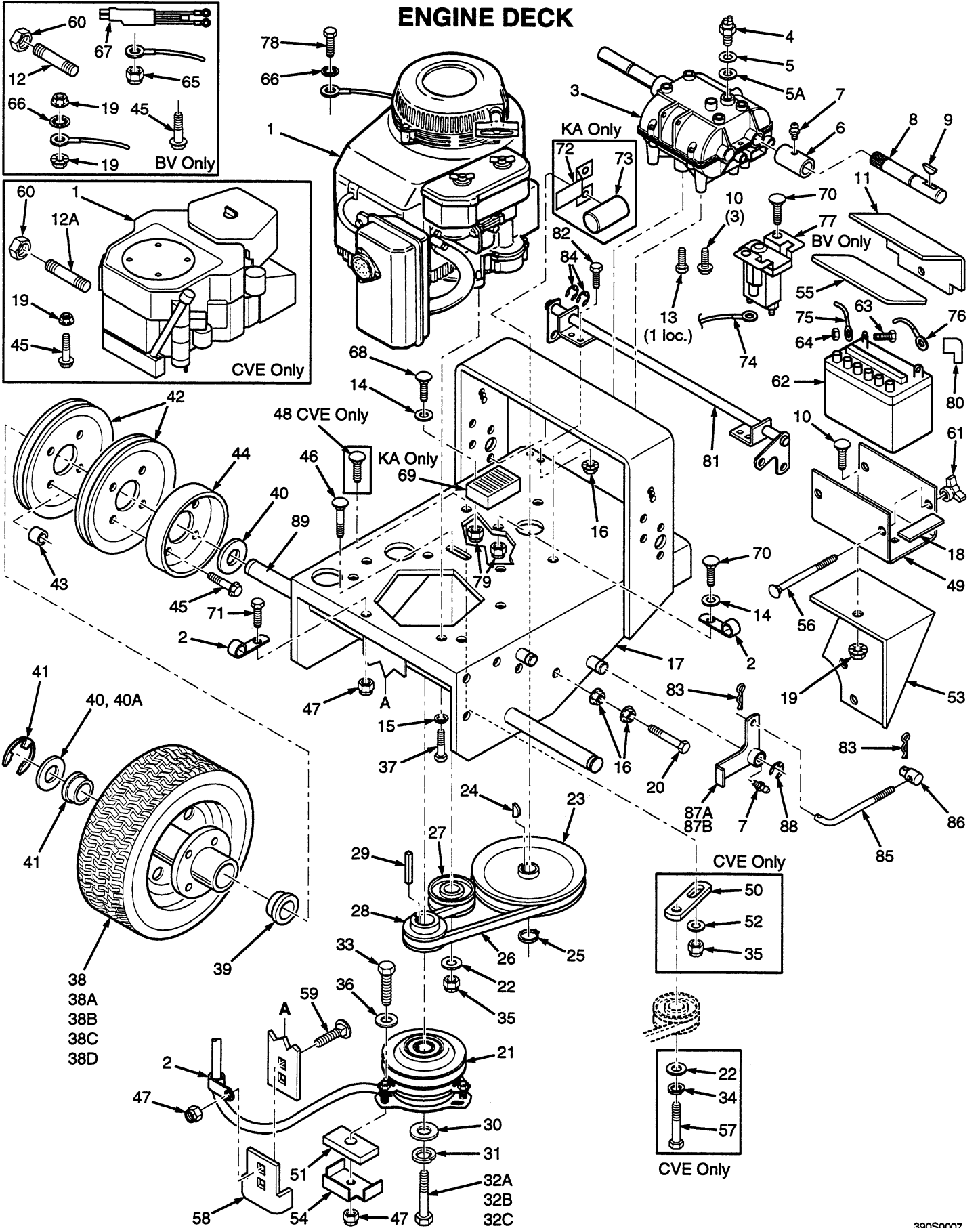


SC410GB

## 48, 52, 61, & 72" CUTTER DECKS

Ref. Part No. No.	Description	48	52	61	72	Ref. Part No. No.	Description	48	52	61	72	
1	46851	Cutter Deck (Includes decals)	x			45	04020-09	Nut, 5/8-11 Hex	x	x	x	x
1	46751	Cutter Deck (Includes decals)		x		46	48923	Pulley, Double	x	x		
1	46752	Cutter Deck (Includes decals)			x	46A	48940	Pulley, Double			x	
1	46608	Cutter Deck (Includes decals)				46B	48966	Pulley, Double				x
2	46631	Spindle Assembly	x	x	x	47	48087	Belt, RH Blade Drive	x			
3	43312	Spacer, Inside	x	x	x	47	48285	Belt, RH Blade Drive		x		
4	48924	Pulley	x	x	x	47	48265	Belt, RH Blade Drive			x	
5	481022	Tapered Bearing (Two)	x	x	x	47	48295	Belt, RH Blade Drive				x
6	43294	Spindle Housing	x	x	x	48	48089	Belt, Blade Drive	x			
7	48114-04	Grease Fitting Str. 5/16	x	x	x	48	48286	Belt, Blade Drive		x		
8	43298	Spindle Shaft, Tapered Brng	x	x	x	48	48088	Belt, Blade Drive			x	
9	45037	Idler Pivot	x	x	x	48	48296	Belt, Blade Drive				x
10	04063-08	Key, 1/4 x 1/4 x 2"	x	x	x	49	04021-05	Nut, 3/8-16, Nut Centerlock	x	x	x	x
11	43278	Spacer, Cutter Blade - Small	x	x	x	50	04019-04	Nut, 3/8-16, Serrated Flange	x	x	x	x
12	04001-10	Bolt, 5/16-18 x 1-1/4" Hex Head	x	x	x	51	04021-09	Nut, 3/8-16 Elastic Stop	x	x	x	x
13	04001-108	Bolt, 5/16-18 x 4-1/4" Hex Head	x	x	x	52	04004-02	Support, Belt Cover	x	x	x	x
14	04019-03	Serrated Flange Nut, 5/16-18	x	x	x	53	04001-08	Bolt, 5/16-18 x 1/2" Hex Head	x	x	x	x
15	48110	Cutter Blade 16-1/2"	x			54	04017-42	Cpscrw, 7/16-14 x 1" Ser Fling H Hd	x	x	x	x
15	48108	Cutter Blade 18"		x		55	04019-05	Nut, 7/16-14 Serrated Flange	x	x	x	x
15	48111	Cutter Blade 21"			x	56	04041-08	Flat Washer 3/4" Special	x	x	x	x
15	48112	Cutter Blade 24"				56A	04041-08S	Flat Washer 3/4" Special	x	x	x	x
15A	48184	Cutter Blade 16-1/2 Hi Lift	x			57	44078	J-Hook	x	x	x	x
15A	48185	Cutter Blade 18 Hi Lift		x		58	48181	Idler Pulley, "V" Groove	x	x	x	x
15A	48304	Cutter Blade 21 Hi Lift			x	59	04050-02	Retaining Ring, 3/4" Ext."E"	x	x	x	x
16	04040-10	Flatwasher, 5/8" (.688 x 1.75 x .134)	x	x	x	60	46081	Idler Arm Assy. (Incl. 22 & 61)	x	x	x	x
17	04001-41	Hex Head Bolt, 5/8-11 x 9-1/2"	x	x	x	61	48100-05	Bronze Bearing	x	x	x	x
18	46079	Caster Assembly, (incl. 19-28)	x	x	x	62	43028	J-Rod, Idler Pulley	x	x	x	
19	04066-01	Quick Pin	x	x	x	62A	44078	J-Rod, Idler Pulley				x
20	43037-01	Spacer, Caster Yoke, 1/2" thick	x	x	x	63	43077	Spacer, J-Rod	x	x	x	x
21	48100-01	Bronze Bearing	x	x	x	64	04041-12	Washer, 3/8 x 1-1/2 x 16 ga.	x	x	x	x
22	04030-03	Lock Wshr, 5/16" (.317 x .586 x .078)	x	x	x	65	04001-46	Bolt, 3/8-16 x 2-1/4" Hex Head	x	x	x	x
23	46082	Support Assembly, (incl. 21-23)	x	x	x	66	481024	Seal, Cutter Spindle	x	x	x	x
24	45006	Caster Yoke	x	x	x	67	46748	Idler Arm Assy (Includes 22&77)	x	x	x	x
25	43022	Sleeve, Caster Wheel Bearing	x	x	x	68	43277	Spacer, J-Rod	x	x	x	x
26	04001-37	Hex Hd Bolt, 1/2-13 x 5-1/2"	x	x	x	69	48677	Relief Fitting, Cutter Spindle	x	x	x	x
27	04021-07	Elastic Stop Nut, 1/2-13	x	x	x	70	43312	Spacer, Outside, Cutter Spindle	x	x	x	x
28	48307	Wheel Assy. (incl. 29-34,81)	x	x	x	71	43297	Spindle Bushing	x	x	x	x
29	48307-02	Tire only, Caster Wheel	x	x	x	72	481035	Nut, Cutter Spindle	x	x	x	x
NS	48006-03	Inner Tube only, Caster Wheel	x	x	x	73	04040-15	Flat Wash., 5/16" (.375 x .875 x .083)	x	x	x	
30	48307-04	Rim Pair, Caster Wheel	x	x	x	74	04001-77	Bolt, 3/8-16 x 3-1/2" Hex Head	x	x	x	x
31	48006-07	Bearing Retainer, Caster Wheel	x	x	x	75	45329	Idler Pivot	x	x	x	x
32	48006-06	Roller Bearing, Caster Wheel	x	x	x	76	48269	Idler Pulley, Belt Clutch	x	x	x	x
33	48114-03	Grease Fitting 45 deg., 1/4-28	x	x	x	77	48100-02	Bronze Bearing	x	x	x	x
34	48006-05	Hub Assembly, (incl. bolts)	x	x	x	78	04050-05	Retaining Ring	x	x	x	x
35	04017-16	Capscrew, 5/16-18 x 3/4"	x	x	x	79	48038	Guide Roller	x	x	x	x
36	46726	Discharge Chute			x	80	45046	Roller Shaft	x	x	x	x
36A	46725	Discharge Chute	x	x		81	481025	Seal, Cutter Spindle	x	x	x	x
37	04021-04	Nut, 5/16-18 Elastic Elastic Stop	x	x	x	82	43277	Spacer, J-Hook	x	x	x	x
38	04001-09	Bolt, 5/16-18 x 1" Hex Head	x	x	x	83	48307-08	Nut, 3/8-24 Tapered	x	x	x	x
39	46798	Belt Cover (Includes decals)			x	84	481050	Spring, Chute Return	x	x	x	x
39	46804	Belt Cover (Includes decals)		x		85	48098	Spindle Shield	x	x	x	x
39	46805	Belt Cover (Includes decals)			x							
39	46848	Belt Cover (Includes decals)										
40	04041-07	Flat Washer, 3/8" Special	x	x	x							
41	04029-03	Wing Nut, 3/8-16	x	x	x							
42	48924	Pulley	x	x								
42A	48753	Pulley			x							
42B	48967	Pulley										
43	48926	Tapered Hub	x	x	x							
44	04001-01	Bolt, 1/4-20 x 3/4" Hex Head	x	x	x							

## ENGINE DECK



## ENGINE DECK

Ref. Part No.	Part No.	Description	13KH13KA 16BV				Ref. Part No.	Part No.	Description	13KH13KA 16BV			
			14KH14KA	18BV	18KH	14KAE				14KH14KA	18BV	18BV	18BV
1A	48843	Engine, 12.5HP Kohler (PS-1256)	x				38B	48193-03	Rim & Bearing Assembly (incl. 39) (fits SW36,48,52,61 & 72)	x	x	x	x
1A	48844	Engine, 14HP Kohler (CV 12.5T PS-1413)	x				38C	48253-02	Tire, 13 x 5.00-6 2-ply (SW32 only)		x		
1B	48841	Engine 12.5HP Kawasaki (FB460-ES05)		x			38D	48253-03	Rim Assembly (incl. 39) (SW32 only)		x		
1B	48842	Engine, 14HP Kawasaki (FC420V)		x			39	48193-02	Wheel Brg. NWC (OD 1.984-1.980)	x	x	x	x
1B	481052	Engine, 14HP Kawasaki Elec. Start		x			40	04042-05	Washer, 1-1/16 x 1-3/4 x 12 ga	x	x	x	x
1C	481065	Engine, 16HP Briggs Vanguard (303772 0345 02)			x		40A	04041-14	Washer, 1-1/16 x 1-1/2 x 18 ga	x	x	x	x
1C	48766	Engine, 16HP BVE			x		41	04050-08	Retaining Ring, 1" Ext. - "E"	x	x	x	x
1C	481066	Engine, 18HP Briggs Vanguard			x		42	48200	Pulley, Wheel Drive	x	x	x	x
1D	48969	Engine, 18HP Kohler (Electric Start V-Twin)				x	43	43088	Spacer, Wheel Pulley	x	x	x	x
2	48030-09	Cable Clamp	x	x	x	x	44	48209	Brake Drum	x	x	x	x
3	48331	Transmission, 5-speed (Peerless 700-026)	x	x	x	x	45	04017-19	Bolt, 5/16-18 x 1-1/2" Serrated Flange			x	x
4	48231	Neutral Safety Switch	x	x	x	x	46	04003-03	Bolt, 3/8-16 x 2" Carriage	x	x	x	x
5	48122-01	Fibre Washer, thin	x	x	x	x	47	04021-10	Nut, 5/16-18 Elastic Stop	x	x	x	x
5A	48122-02	Fibre Washer, thick	x	x	x	x	48	04003-11	Bolt, 3/8-16 x 1-1/4" Carriage				x
6	48851	Coupler, Jackshaft	x	x	x	x	49	421703	Battery Box		x	x	x
7	48114-05	Grease Fitting, straight 1/4-28	x	x	x	x	50	42330	Bracket, Idler Pulley				x
8	48225	Jackshaft (fits SW32,36 & 48)	x	x			51	48814	Rubber Pad, Clutch Stop	x	x	x	x
8A	48242	Jackshaft (fits SW52,61 & 72)			x	x	52	04041-11	Washer, 13/32 x 1-1/2 x 7 ga				x
9	04063-09	Key, Hi-Pro #9	x	x	x	x	53	45685	Battery Support Weldment		x	x	x
10	04003-12	Bolt, 5/16-18 X 3/4" Carriage	x	x	x	x	54	421564	Backing Plate	x	x	x	x
11	421408	Battery Cover			x		55	48099	Battery Cover Pad				x
12	48402-03	Oil Drain Extension 5-1/4"			x		56	04003-01	Bolt, 1/4-20 x 6" carriage				x
12A	48402-04	Oil Drain Extension 4-3/4"			x		57	04001-21	Bolt, 3/8-16 x 1-3/4" Hex Head				x
13	04001-08	Bolt, 5/16-18 X 3/4" Hex Head	x	x	x	x	58	421370	Anti Rotation Bracket	x	x	x	x
14	04040-14	Flat Washer 1/4" (.312 X .75 X .065)	x	x	x	x	59	04003-04	Bolt, 5/16-18 x 1" Carriage	x	x	x	x
15	04030-03	Lock Wshr. 5/16"	x	x	x	x	60	48257	Pipe Cap				x
16	04019-04	Nut, 3/8-16 Serrated Flange	x	x	x	x	61	04029-01	Wing Nut, 1/4-20		x	x	x
17	46943	Engine Deck (fits SW32)					62	48015	Battery		x	x	x
17A	46944	Engine Deck (fits SW36 & 48)					63	04001-44	Bolt, 1/4-20 x 1/2" Hex Head		x	x	x
17B	46945	Engine Deck (fits SW52,61 & 72)					64	04020-02	Nut, 1/4-20		x	x	x
18	48661	Rubber Pad				x	65	04021-08	Nut, 1/4-20 Elastic Stop	x	x	x	x
19	04019-03	Nut, 5/16-18 Serrated Flange		x	x	x	66	04031-09	Lock Washer Internal Tooth	x	x	x	x
20	04001-51	Bolt, 3/8-16 x 3-3/4" Hex Head	x	x	x	x	67	481077	Wire Harness Adapter, Man. Start				x
21	48786	Electric Clutch	x	x	x	x	67	481054	Wire Harness Adapter, Elec. Start				x
22	04041-07	Washer, 3/8" (.391 x .938 x .105)	x	x	x	x	68	04001-59	Bolt, 1/4-20 x 1-1/4"	x	x		
23	48197	Pulley, Transmission Input	x	x	x	x	69	21066-2071	Rectifier (order from Kawasaki)		x		
24	04063-07	Key, Woodruff #9	x	x	x	x	70	04003-02	Bolt, 1/4-20 x 3/4" Carriage	x	x	x	x
25	04050-09	Retaining Ring, 5/8" Ext, Basic	x	x	x	x	71	04001-09	Bolt, 5/16-18 x 1" Hex Head	x	x	x	x
26	48203	Belt, Transmission Drive	x	x	x	x	72	421390	Bracket, Capacitor		x		
27	481048	Idler Pulley, Transmission	x	x	x	x	73	21013-2064	Condenser (order from Kawasaki)		x		
28	48945	Pulley, Traction Drive	x	x	x	x	74	48029-06	Battery Cable, 18" Red				x
29	04063-19	Key, 1/4 x 1/4 x 3/4"	x	x	x	x	75	48029-11	Battery Cable, 27" Black		x		
30	04041-18	Flat Washer, 7/16" Special	x	x	x	x	75	48029-15	Battery Cable, 36" Black				x
31	04030-05	Lock Washer, 7/16"	x	x	x	x	75	48029-14	Battery Cable, 31" Black				x
32A	04001-101	Bolt, 7/16-20 x 2-1/2" Hex Head			x		76	48029-02	Battery Cable, 31.5" Red		x	x	x
32B	04001-102	Bolt, 7/16-20 x 1-3/4" Hex Head				x	77	48016	Starter Solenoid				x
32C	04002-08	Cpsrw, M10-1.5 x 60 Metric Hex Hd	x	x			78	04002-07	Bolt, M8-1.25 x 1.0	x			
33	04001-10	Bolt, 5/16-18 x 1-1/4" Hex Head	x	x	x	x	79	04021-08	Nut, 1/4-20 Elastic Stop	x	x	x	x
34	04030-04	Lockwasher, Spring 3/8"				x	80	48126	Rubber Boot		x	x	x
35	04021-09	Nut, 3/8-16 Elastic Stop	x	x	x	x	81	45854	Brake Shaft Weldment (Large Frame)		x	x	x
36	04040-15	Flat Washer, 5/16"	x	x	x	x	81	45842	Brake Shaft Weldment (Small Frame)	x	x	x	
37	04018-01	Bolt, M8-1.25 x M25 Metric Hex Hd	x	x			82	04001-19	Bolt, 3/8-16 x 1" Hex Head	x	x	x	x
38	48192	Wheel Assembly (incl. 38A-38B) (fits SW36,48,52,61,72)	x	x	x	x	83	04062-01	Hair Pin Cotter (.094 x 1.62)	x	x	x	x
38	48253	Wheel Assembly (incl. 38C-38D) (SW32)	x	x			84	04050-02	Retaining Ring .75 Ext. "E"	x	x	x	x
38A	48192-02	Tire, 13 x 6.50-6, 2-ply (fits SW36,48,52,61 & 72)	x	x	x	x	85	44005	Brake Rod	x	x	x	x
							86	43032	Swivel Joint	x	x	x	x
							87A	45844	Brake Actuator Lever LH	x	x	x	x
							87B	45845	Brake Actuator Lever RH	x	x	x	x
							88	04050-01	Retaining Ring .625 Ext. "E"	x	x	x	x
							89A	43100	Wheel Axle (SW 52,61,72)		x	x	x
							89B	43085	Wheel Axle (SW36,48)	x	x	x	
							89C	43104	Wheel Axle (SW 32)		x		

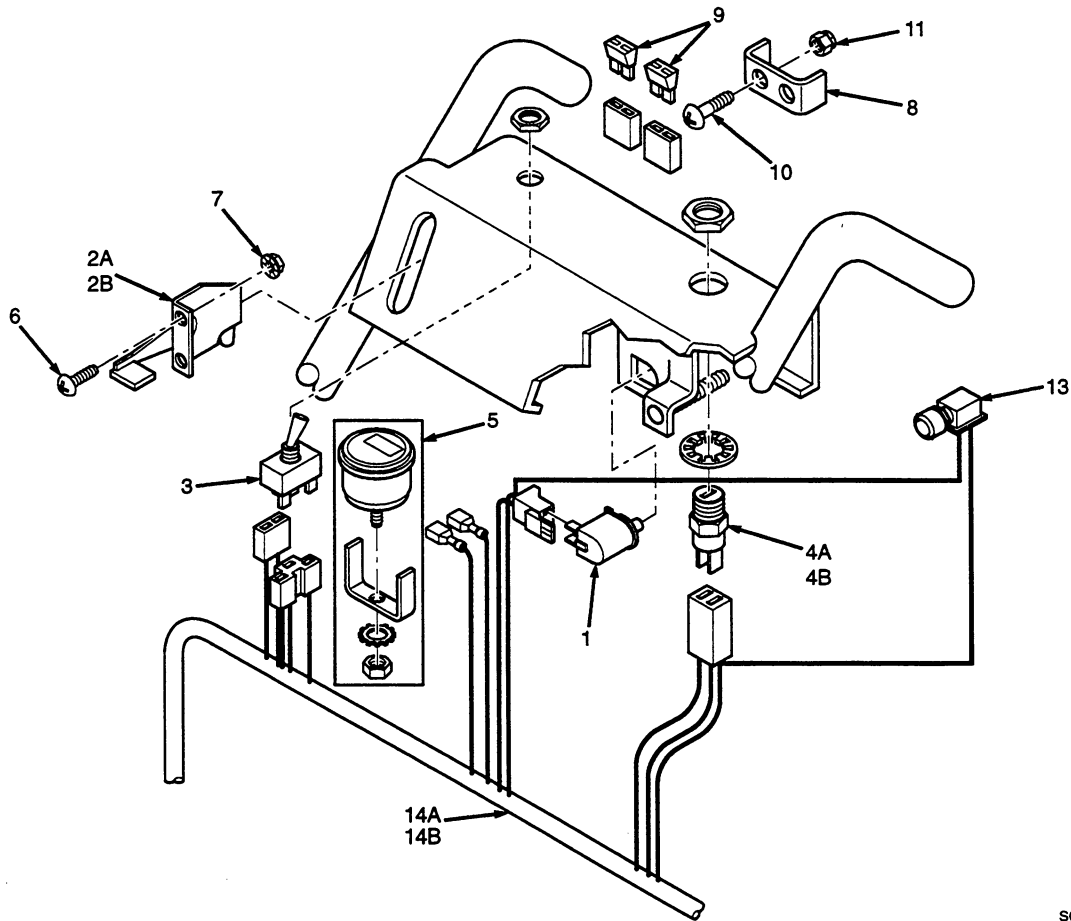




## HANDLE ASSEMBLY

Ref. Part No.	Part No.	Description	13KH13KA 16BV			Ref. Part No.	Part No.	Description	13KH13KA 16BV			
			14KH14KA	18BV	18BVE				14KH14KA	18BV	18BVE	
			14KAE						14KAE			
1	46936	Handle Assembly (Fits SW 36,48)	x	x		54	04050-09	Retaining Ring, 5/8 Ext. Basic	x	x	x	x
1	46937	Handle Assembly (Fits SW52,61,72)	x	x	x	55	04017-06	Capscrew, 1/4-20 x 1" Ser. Flange	x	x	x	x
2	421360	Belt Guard	x	x	x	56	<del>04003-01</del>	<del>Bolt, 1/4-20 x 6" Carriage</del>				<del>x</del>
3	04017-27	Capscrew, 3/8-16 x 1" Ser. Flange	x	x	x	57	48030-09	Clamp	x	x	x	x
4	04001-17	Washer, 3/8" (.391 x .938 x .105)	x	x	x	58	04001-17	Bolt, 5/16-18 x 2" Hex Head	x	x	x	x
5	04021-09	Nut, 3/8-16 Elastic Stop	x	x	x	59	04019-02	Nut, 1/4-20 Serrated Flange	x	x	x	x
6	48755	Spring, Idler	x	x	x	60	04040-15	Flatwasher, 5/16 (.375 x .875 x .083)	x	x	x	x
7	04001-10	Bolt, 5/16-18 x 1-1/4" Hex Head	x	x	x	61	04021-02	Nut, 1/4-20 Elastic Stop	x	x	x	x
8	04021-10	Nut, 5/16-18 Elastic Stop	x	x	x	62	48179	Fuel Hose (Kawasaki Only)				
9	04017-05	Capscrew, 1/4-20 x 3/4" Hex Head	x	x	x	63	48059-02	Fuel Hose Clamp (Kaw. Only)	x			
10	44004	Control Rod, Steering	x	x	x	64	48057-02	Fuel Filter (Kawasaki Only)		x		
11	04062-02	Hair Pin, Small	x	x	x	65	48058	Fuel Hose, 1/4"ID, 10" (Kohler Only)	x			
12	04001-23	Bolt, 3/8-16 x 4-1/2" Hex Head	x	x	x	65A	48058	Fuel Hose, 1/4"ID, 20" (KAW & Brigs)		x		
13	43032	Swivel Joint	x	x	x	65B	48058	Fuel Hose, 1/4"ID, 23" (Kohler 18CVE)				x
14	04062-01	Hair Pin, Large .094 Diameter	x	x	x	66	48059-01	Clamp, Fuel Hose	x	x	x	x
15	45847	Idler Bracket, RH	x	x	x	67	481072	Choke Control			x	
15A	45846	Idler Bracket, LH	x	x	x	67	48780	Choke Control				x
16	43092	Idler Sleeve	x	x	x	68	48159	Grip, Handle	x	x	x	x
17	04001-62	Bolt, 3/8-16 x 3/4" Hex Head	x	x	x	69	48308	Valve, Fuel Shut Off	x	x	x	x
18	04004-17	Support Belt Guard	x	x	x	70	46174	Fuel Tank Assy. (Incl. Bush. & Valve)	x	x	x	x
19	04019-04	Nut, 5/16-18 Serrated Flange	x	x	x	71	48311	Fuel Tank Cap	x	x	x	x
20	04019-03	Nut, 5/16-18 Serrated Flange	x	x	x	72	421239	Strap, Fuel Tank	x	x	x	x
21	04017-28	Cpscrew, 3/16-18 x 1-1/4" Ser. Flng.	x	x	x	73	04010-10	Screw, 1/4-20 x 2" Round Hd Slotted	x	x	x	x
22	43286	Spacer	x	x	x	74	42388	Shift Lever	x	x	x	x
23	48309	Bushing	x	x	x	75	421241	Shift Lever Extention	x	x	x	x
24	48292	Rubber Pads, (Upper)	x	x	x	76	48144	Grip, Steering Lever	x	x	x	x
25	46089	Steering Lever	x	x	x	77	04043-01	Washer, 1/4 (.265 x .875 x .125)	x	x	x	x
26	04017-17	Capscrew, 5/16-18 x 1" Ser. Flng.	x	x	x	78	04001-55	Bolt, 1/4-28 x 3/4" Hex Head Grd 8	x	x	x	x
27	48312	Bushing	x	x	x	79	48028-05	Cable Tie	x	x	x	x
28	04040-15	Washer, 5/16 (.375 x .875 x .083)	x	x	x	80	04001-53	Bolt, 5/16-18 x 2-1/2"	x	x	x	x
29	48951	Spring, Operator Presence	x	x	x	81	46954	Brake Lever with Grip	x	x	x	x
30	45573	Operator Presence Lever, LH (Small Frame)	x	x		82	481476	Switch	x	x	x	x
30A	45571	Operator Presence Lever, LH (Large Frame)	x	x	x	83	48342	Grip, Brake	x	x	x	x
31	45572	Operator Presence Lever, RH	x	x	x	84	48464	Ball Joint	x	x	x	x
32	44005	Brake Rod	x	x	x	85	43212	Spacer	x	x	x	x
33	45092	Brake Lever	x	x	x	86	04020-14	Nut, 3/8-24	x	x	x	x
34	45093	Brake Link	x	x	x	87	44125	Rod, Brake Lever	x	x	x	x
35	42254	Brake Link Plate	x	x	x	88	04001-21	Bolt, 3/8-16 x 1-3/4"	x	x	x	x
36	04024-01	Nut, 3/8 Push-on	x	x	x	89	04021-09	Nut, 3/8-16 Elastic Stop	x	x	x	x
37	48114-05	Greese Fitting, Straight 1/4-28	x	x	x	90	481411	Bushing, Bearing Retainer	x	x	x	x
38	04050-01	Retaining Ring, 5/8 Ext. "E"	x	x	x	91	481420	Bearing	x	x	x	x
39	48210	Brake Band	x	x	x	92	04041-23	Washer, #8-.170 x .375 x .032	x	x	x	x
40	04001-45	Bolt, 3/8-16 x 2" Hex Head	x	x	x	93	04015-13	Socket Head Capscrew #8-32 x 1/2"	x	x	x	x
41	04031-08	1/4" Internal Tooth Lockwasher	x	x	x	<b>Traction Plus Accessories (Optional), RVS-SM &amp; RVS-LG</b>						
42	04032-01	Curved Spring Washer	x	x	x	A	04017-27	Capscrew, 3/8-16 x 1" Ser. Flng	x	x	x	x
43	04030-02	Lockwasher, 1/4 Spring	x	x	x	B	44098	Rod, Traction Control	x	x	x	x
44	04020-02	Nut, 1/4-20 Hex	x	x	x	C	43023	Swivel Joint	x	x	x	x
45	46942	Neutral Latch, RH	x	x	x	D	04062-01	Hair Pin, Large .094 Dia.	x	x	x	x
45A	46941	Neutral Latch, LH	x	x	x	E	421372	Mounting Brkt. LH Traction Cont.	x	x	x	x
46	48205	Rubber Pad (Lower)	x	x	x	EA	421373	Mounting Brkt. RH Traction Cont.	x	x	x	x
47	48202A	Belt, Wheel Drive	x	x	x	F	04019-04	Nut, 3/8-16 Serrated Flange	x	x	x	x
48	48198	Idler Pulley, Wheel Drive	x	x	x	G	04017-16	Capscrew, 5/16-18 x 3/4" Ser. Flng.	x	x	x	x
49	48199	Pulley, Jackshaft (Inc. 50)	x	x	x	H	04019-03	Nut, 5/16-18 Serrated Flange	x	x	x	x
50	04012-04	Setscrew, Hex Socket Knurl Cup Pt. 5/16-18 (nylock)	x	x	x	I	421428	Traction Lever, LH	x	x	x	x
51	43098	Spacer, Jackshaft Pulley	x	x	x	IA	421429	Traction Lever, RH	x	x	x	x
52	48223	Flange, Jackshaft Bearing	x	x	x	J	45554	Traction Lever Widmnt. (Small Fm.)	x	x		
53	48224	Bearing, Jackshaft	x	x	x	JA	45555	Traction Lever Widmnt. (Large Fm.)	x	x	x	x

## INSTRUMENT PANEL

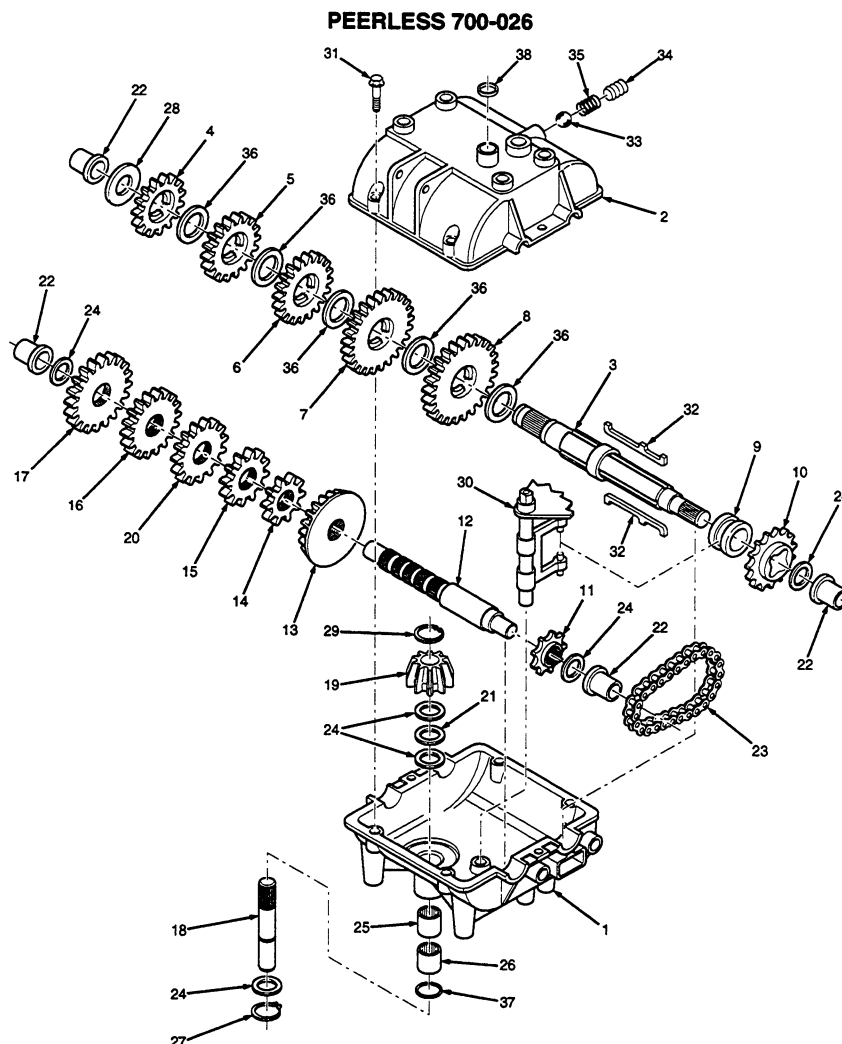


SC413GB

REF. PART NO.	NO.	DESCRIPTION	13KH	13KA	16BV	14KH	14KA	18BV	18CVE
1	48717	Switch, Neutral Interlock	X	X	X	X			
2A	481071	Throttle Control	X	X					
2B	48946	Throttle Control			X			X	
3	48787	Engagement Switch, Electric Clutch (Includes hardware)	X	X	X	X			
4A	48609	Key Switch (Includes hardware)	X	X	X				
4B	48798	Key Switch (Includes hardware)							X
5	48023	Hour Meter (dealer installed)	X	X	X	X			X
6	*	Screw, #10-32 x .50 Phillips Washer Head	X	X	X	X			X
7	04019-01	Nut, #10-32 Serrated Flange Hex Head	X	X	X	X			X
8	42413	Bracket, Fuse Holder			X	X		X	
9	48298	Blade Fuse, 20A			X	X		X	
10	*	Screw, #10-32 x 1-1/2"			X	X		X	
11	04021-01	Nut, #10-32 Elastic Stop			X	X		X	
12	48951	Spring, Operator Presence	X	X	X	X		X	
13	481476	Switch, Brake	X	X	X	X		X	
14A	481407	Handle Wire Harness, Electric Start				X			X
14B	481406	Handle Wire Harness, Manual Start	X	X	X				
NS	48030-09	Clamp, Wire Harness	X	X	X	X		X	

\* Common hardware which should be purchased locally. All bolts grade 5 plated, all other fasteners zinc plated.

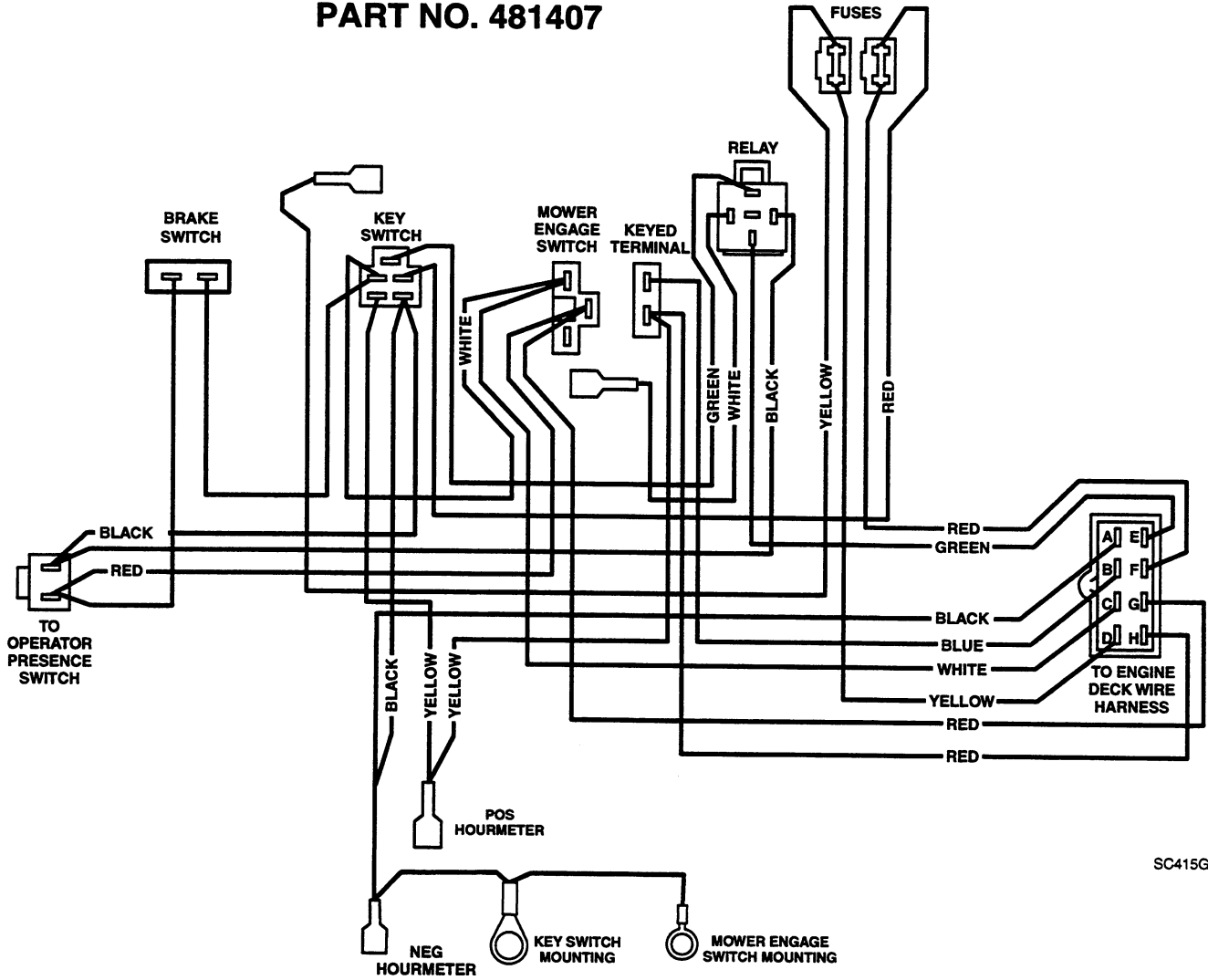
## PEERLESS 700-026



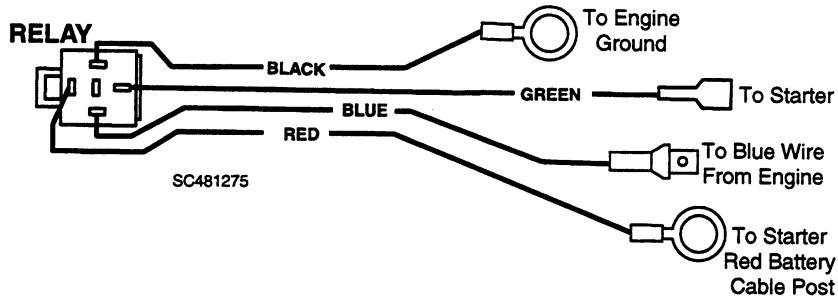
SC414G

REF. PART NO. NO.	DESCRIPTION	REF. PART NO. NO.	DESCRIPTION
1 770061	Case, Transmisson	22 780105A	Bushing, Flanged
2 772083	Cover, Transmission	23 786081	Chain, Roller (No.41 chain,24 links)
3 776217	Shaft, Output & Brake	24 780072	Washer, Thrust
4 778123A	Gear, Spur (25 teeth)	25 780086	Bearing, Needle
5 778124A	Gear, Spur (30 teeth)	26 780142	Bearing, Needle
6 778239	Gear, Spur (32 teeth)	27 792035	Ring, Retaining
7 778125	Gear, Spur (35 teeth)	28 780139	Washer, Thrust
8 778146A	Gear, Spur (37 teeth)	29 788040	Ring, Retaining
9 784266	Collar, Shift	30 784267	Rod & Fork Assy., Shift
10 786083	Sprocket (18 teeth)	31 792073	Screw, Flanged Hex Hd Thread, 1/4-20 x 1-1/4"
11 786082	Sprocket (9 teeth)	32 792089A	Key
12 776134	Shaft, Counter	33 792077	Ball, Steel, 5/16"
13 778154	Gear, Bevel (42 teeth)	34 792078	Screw, Set 3/8-16 x 3/8"
14 778145	Gear, Spur (12 teeth)	35 792079	Spring
15 778151	Gear, Spur (15 teeth)	36 780108	Washer, Thrust
16 778126A	Gear, Spur (20 teeth)	37 792001	"O" Ring
17 778127A	Gear, Spur (25 teeth)	38 788069	Seal, Square cut
18 776135	Shaft, Input		
19 779176	Bevel Pinion, Input		
20 778240	Gear, Spur (18 teeth)		
21 780071	Bearing, Thrust		

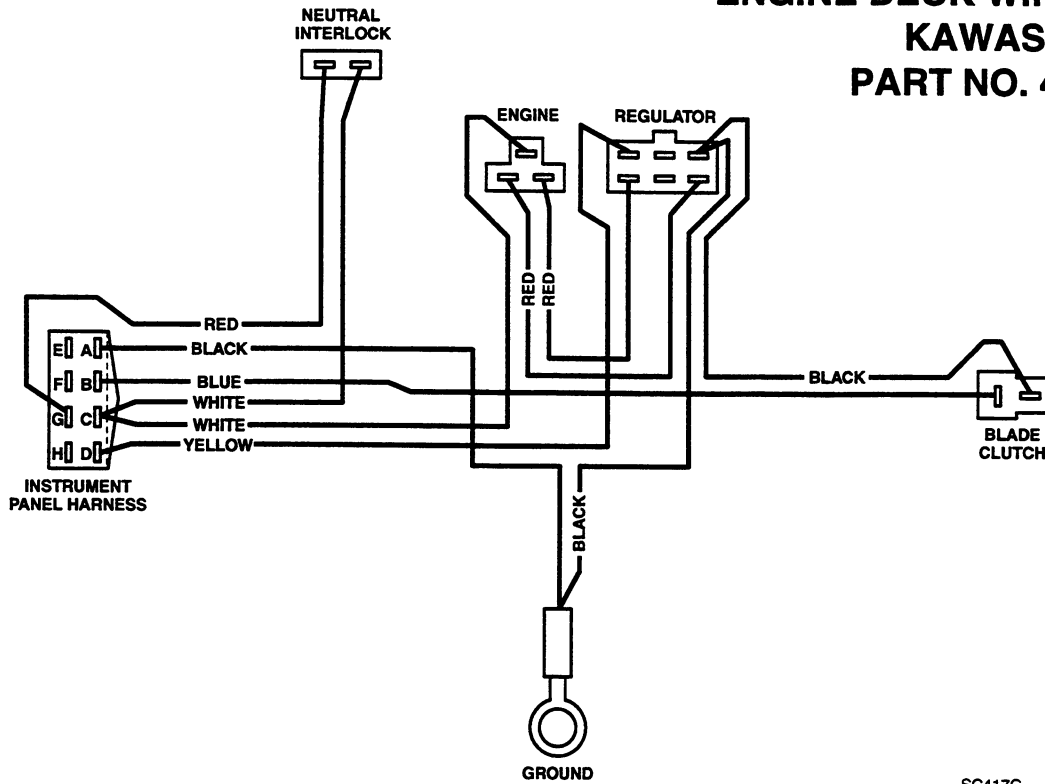
## HANDLE WIRE HARNESS - ELECTRIC START PART NO. 481407



## WIRE HARNESS WITH RELAY PART NO. 481275

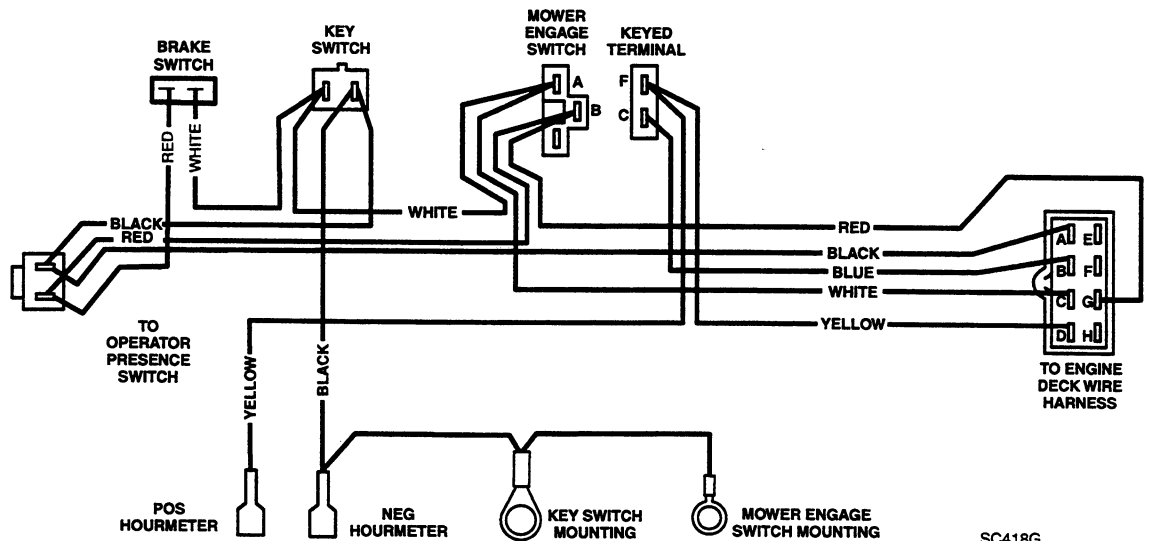


## ENGINE DECK WIRE HARNESS - KAWASAKI PART NO. 481074

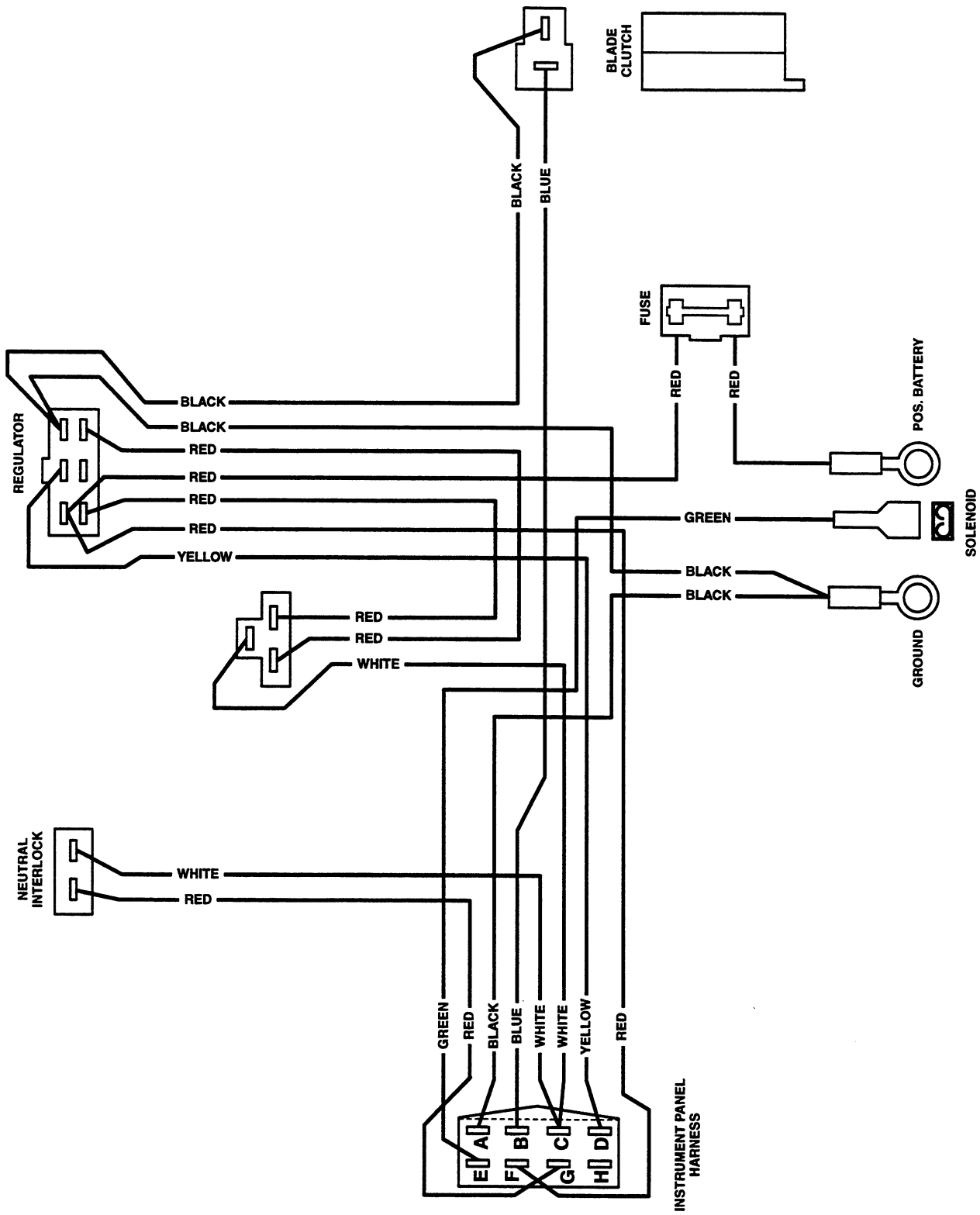


SC417G

## HANDLE WIRE HARNESS - MANUAL START PART NO. 481406

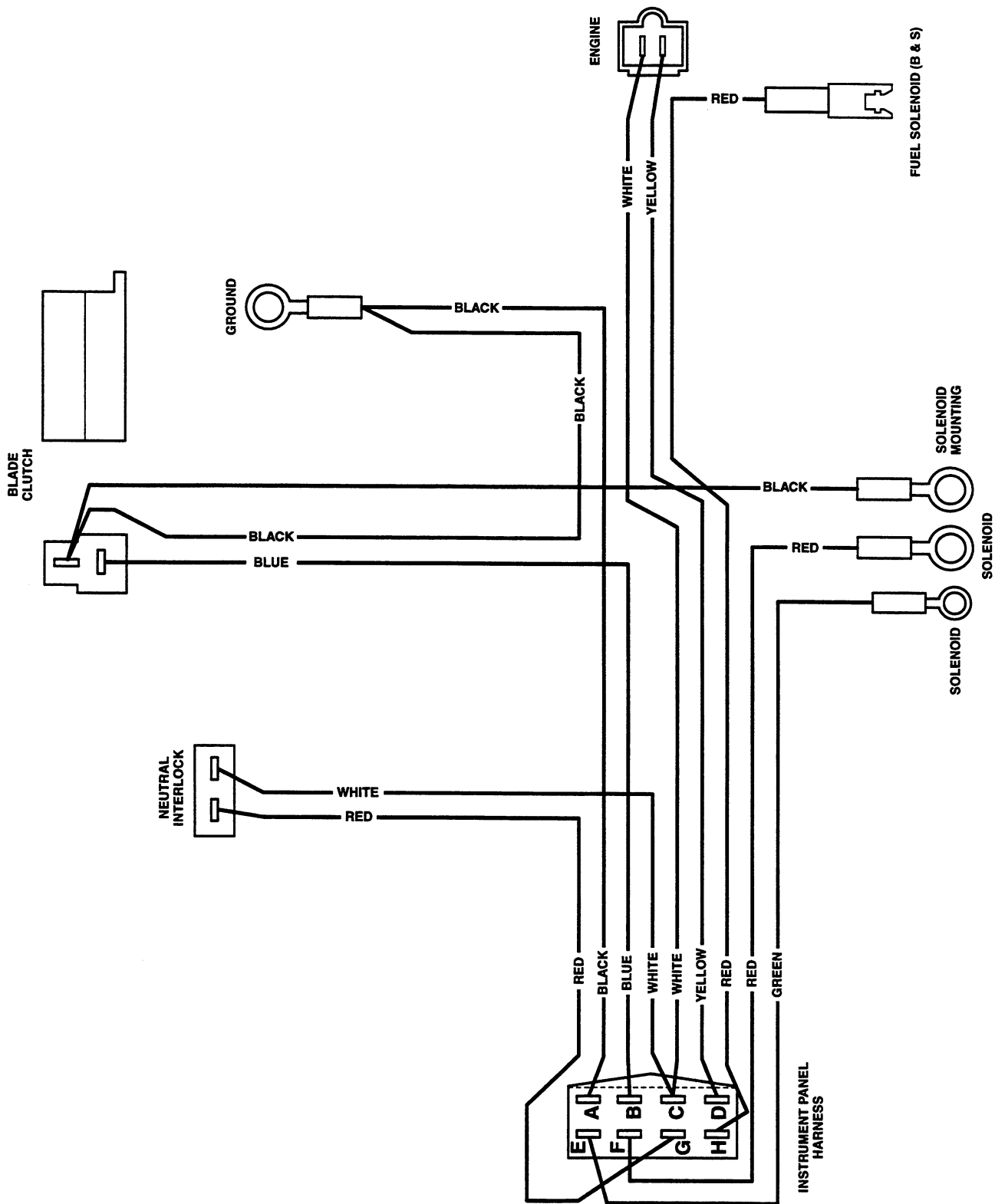


SC418G



**ENGINE DECK WIRE HARNESS - SW48-14KAE**  
**PART NO. 481051**

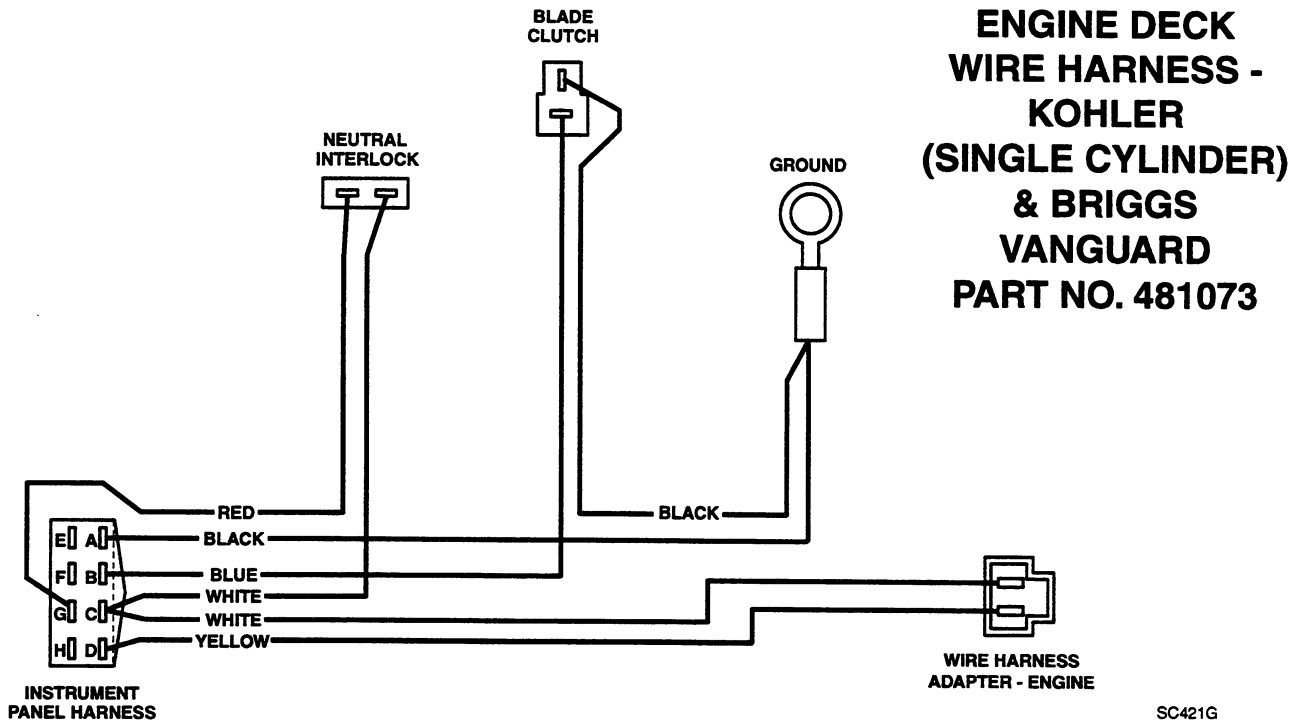
SC419G



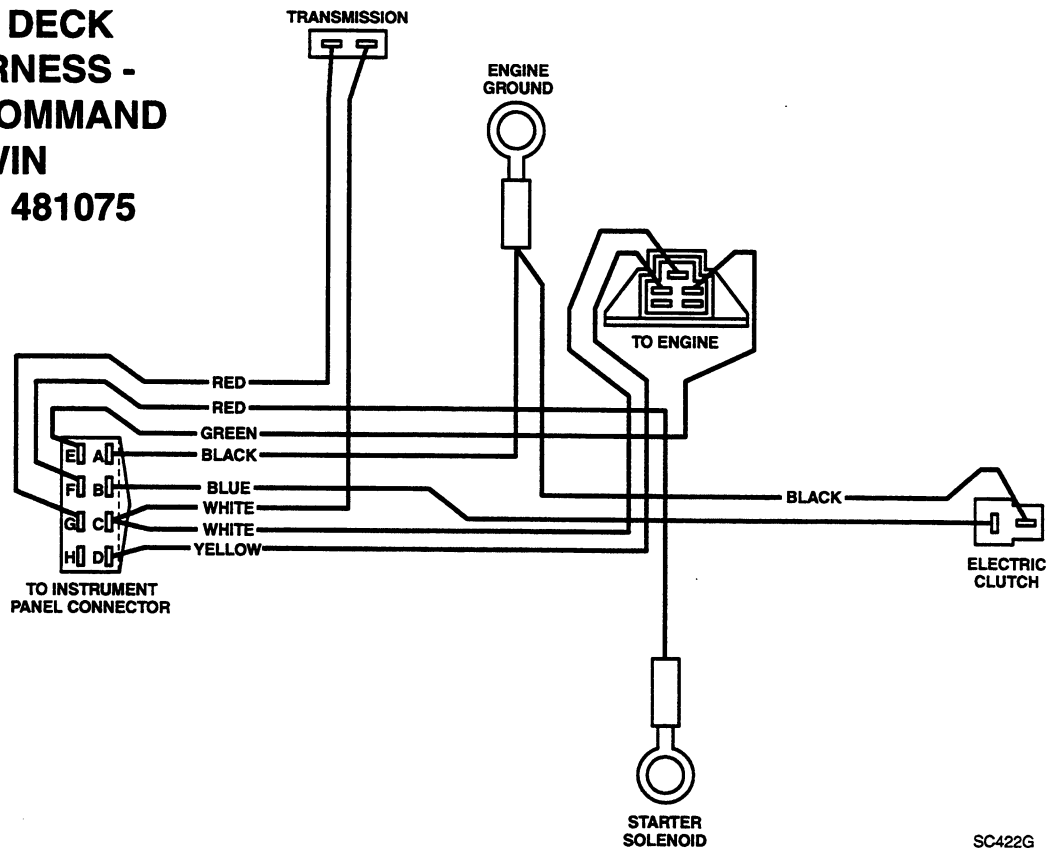
**ENGINE DECK WIRE HARNESS - 16HP-BV ELECTRIC START  
PART NO. 481014**

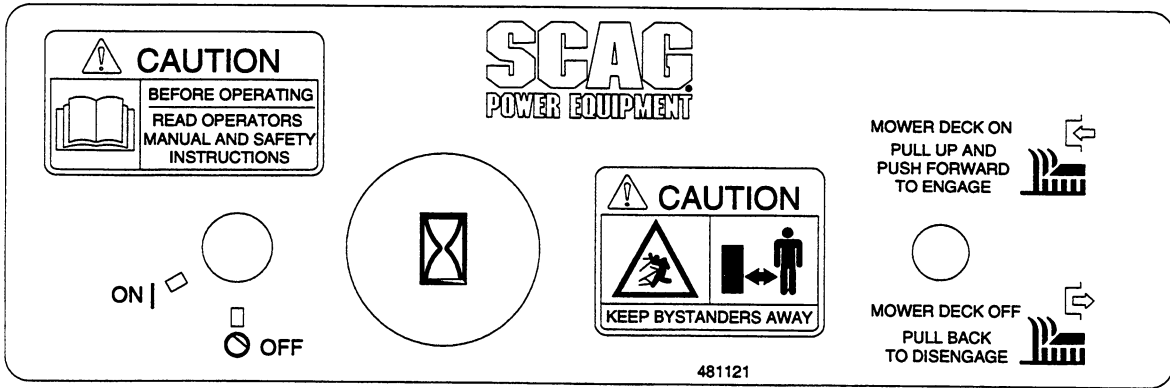
SC420G



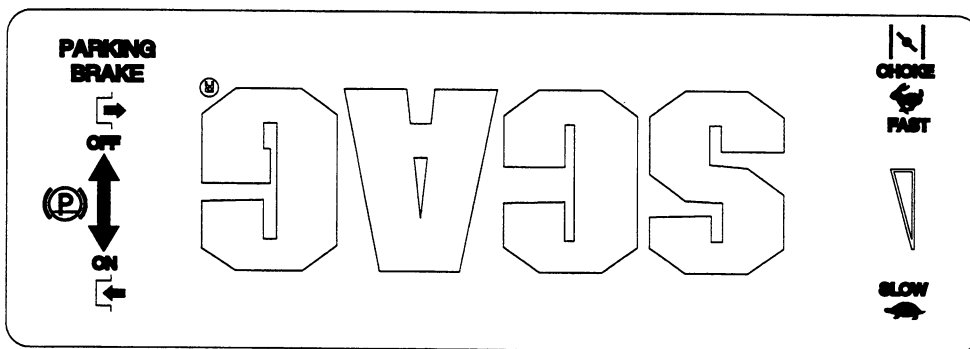


## ENGINE DECK WIRE HARNESS - KOHLER COMMAND V-TWIN PART NO. 481075

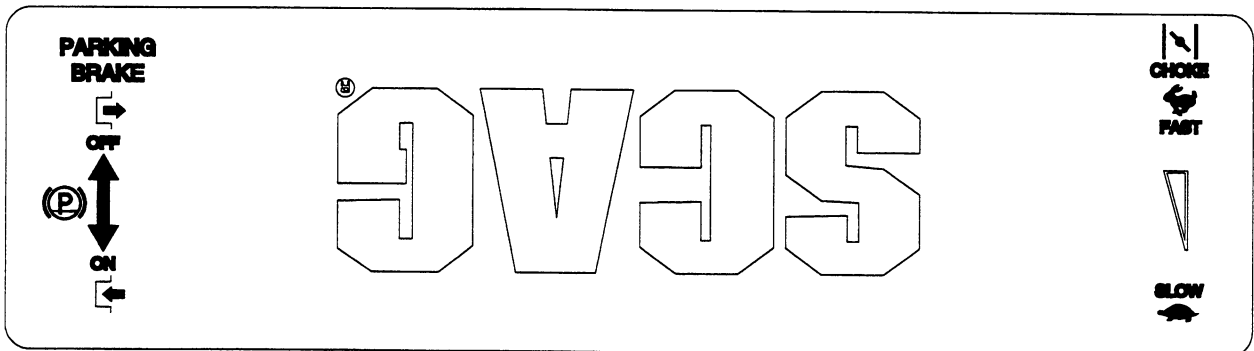




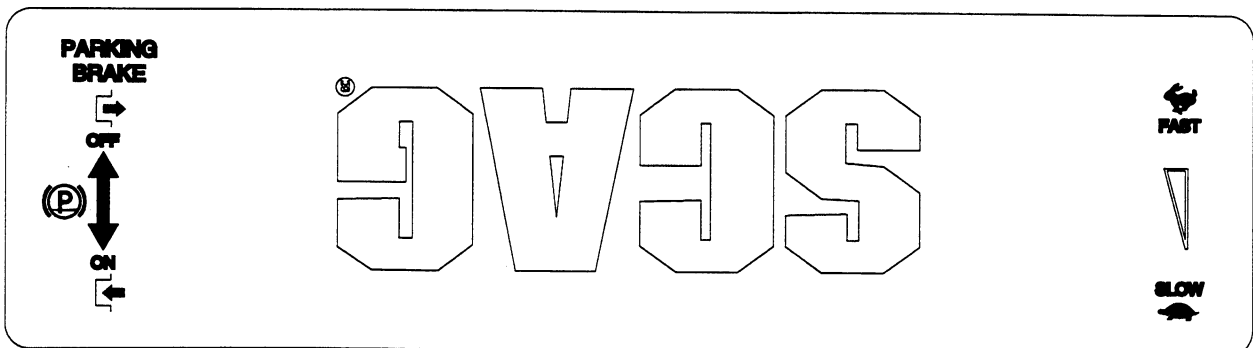
481121



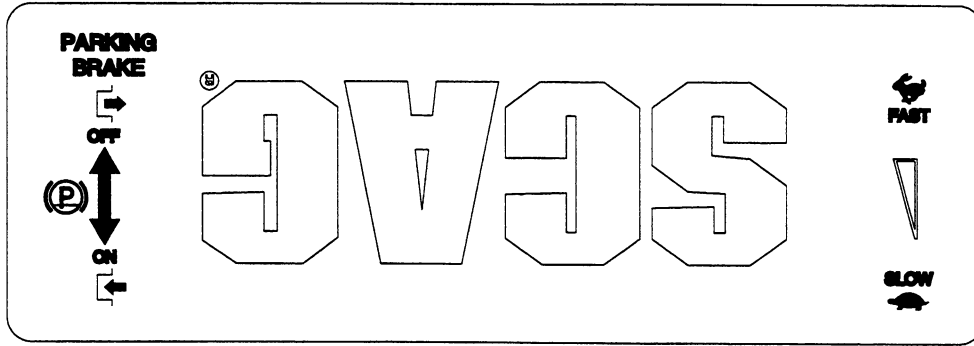
481414



481415



481423



481438



48071



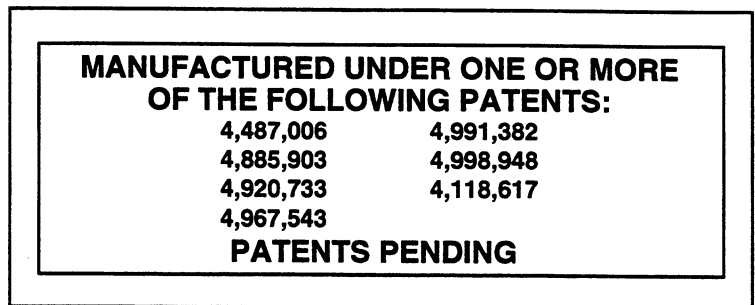
48404



481039



48072



48656

 **WARNING**

**ROTATING BLADES AND BELTS**

- KEEP HANDS, FEET & CLOTHING CLEAR
- KEEP ALL GUARDS IN PLACE
- SHUT OFF ENGINE & DISENGAGE BLADE CLUTCH BEFORE SERVICING
- CLEAR AREA OF DEBRIS BEFORE MOWING
- USE CAUTION IN DIRECTING DISCHARGE
- KEEP BYSTANDERS, CHILDREN & PETS AWAY
- READ INSTRUCTION MANUAL BEFORE OPERATING

DO NOT OPERATE WITHOUT DISCHARGE CHUTE, MULCHING KIT, OR ENTIRE GRASS CATCHER INSTALLED 481040

481040

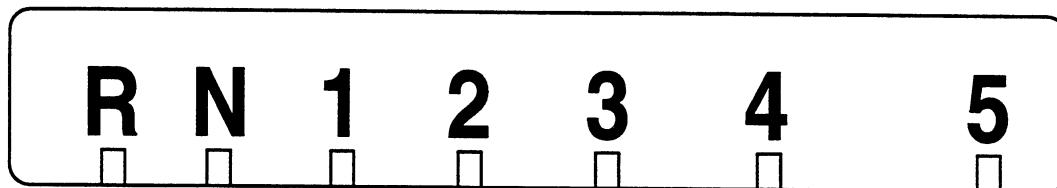
**48**

- 32" - 48315
- 36" - 48316
- 48" - 48318
- 52" - 48319
- 61" - 48320
- 72" - 48327

 **WARNING**

**FALLING HAZARD**  
**USE ONLY SCAG APPROVED**  
**RIDING ATTACHMENTS**  
**SEE OPERATOR'S MANUAL** 481109

481109



48332



## **WARNING:**

If incorrectly used, this machine can cause severe injury. Those who use and maintain the machine should be trained in its proper use, warned of its dangers, and should read the entire manual before attempting to set up, operate, adjust or service the machine.

## **LIMITED WARRANTY-COMMERCIAL EQUIPMENT**

Any part of the Scag commercial mower manufactured by Scag Power Equipment and found, in the reasonable judgment of Scag, to be defective in materials or workmanship, will be repaired or replaced by an Authorized Scag Service Dealer without charge for parts and labor. This warranty is limited to the original purchaser and is not transferable. Proof of purchase will be required by the dealer to substantiate any warranty claims. All warranty work must be performed by an Authorized Scag Service Dealer.

This warranty is limited to the following specified periods from the date of the original retail purchase for defects in materials or workmanship:

- \* Wear items including drive belts, blades, hoses and tires are warranted for 90 days.
- \* Batteries are covered for 90 days.
- \* Frame, deck, and structural components including oil reservoir, fittings, and oil cooler are warranted for 1 year.
- \* Engines and electric starters are covered by the manufacturer's warranty period.
- \* Drive system components are warranted for 1 year by the component manufacturer, in conjunction with Scag Power Equipment. (Excluding fittings, hoses, cooling system, oil reservoir, drive belts).
- \* Electric clutch components are warranted for 1 year.

Any Scag product used for rental purposes is covered by a 90 day warranty.

The Scag mower, including any defective part must be returned to an Authorized Scag Service Dealer within the warranty period. The expense of delivering the mower to the dealer for warranty work and the expense of returning it to the owner after repair will be paid for by the owner. Scag's responsibility is limited to making the required repairs and no claim of breach of warranty shall be cause for cancellation or rescission of the contract of sale of any Scag mower.

This warranty does not cover any mower that has been subject to misuse, neglect, negligence, or accident, or that has been operated in any way contrary to the operating instructions as specified in the Operator's Manual. The warranty does not apply to any damage to the mower that is the result of improper maintenance, or to any mower or parts that have not been assembled or installed as specified in the Operator's Manual and Assembly Manual. The warranty does not cover any mower that has been altered or modified, changing performance or durability. In addition, the warranty does not extend to repairs made necessary by normal wear, or by the use of parts or accessories which, in the reasonable judgment of Scag, are either incompatible with the Scag mower or adversely affect its operation, performance or durability.

Scag Power Equipment reserves the right to change or improve the design of any mower without assuming any obligation to modify any mower previously manufactured.

All other implied warranties are limited in duration to the one (1) year warranty period or ninety (90) days for mowers used for rental purpose. Accordingly, any such implied warranties including merchantability, fitness for a particular purpose, or otherwise, are disclaimed in their entirety after the expiration of the appropriate one year or ninety day warranty period. Scag's obligation under this warranty is strictly and exclusively limited to the repair or replacement of defective parts and Scag does not assume or authorize anyone to assume for them any other obligation. Some states do not allow limitations on how long an implied warranty lasts, so the above limitation may not apply to you.

Scag assumes no responsibility for incidental, consequential or other damages including, but not limited to, expense for gasoline, expense of delivering the mower to an Authorized Scag Service Dealer and expense of returning it to the owner, mechanic's travel time, telephone or telegram charges, rental of a like product during the time warranty repairs are being performed, travel, loss or damage to personal property, loss of revenue, loss of use of the mower, loss of time or inconvenience. Some states do not allow the exclusion or limitation of incidental or consequential damages, so the above limitation or exclusion may not apply to you.

This warranty gives you specific legal rights, and you may also have other rights which vary from state to state.

© 1996  
SCAG POWER EQUIPMENT  
DIVISION OF METALCRAFT OF MAYVILLE, INC.

PART NO. 03030  
PRINTED 7/96  
PRINTED IN USA