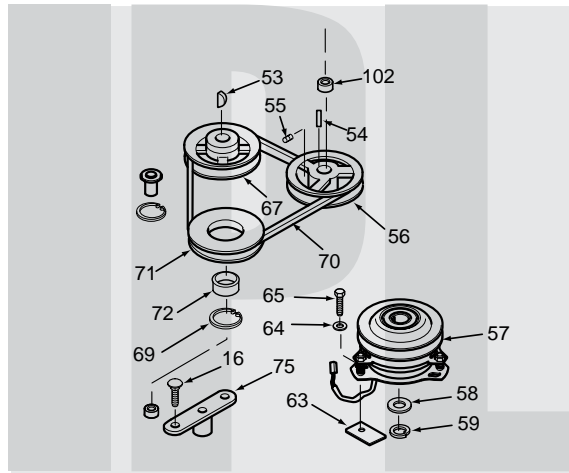


# SCAG<sup>®</sup>

## POWER EQUIPMENT



# MODEL SW

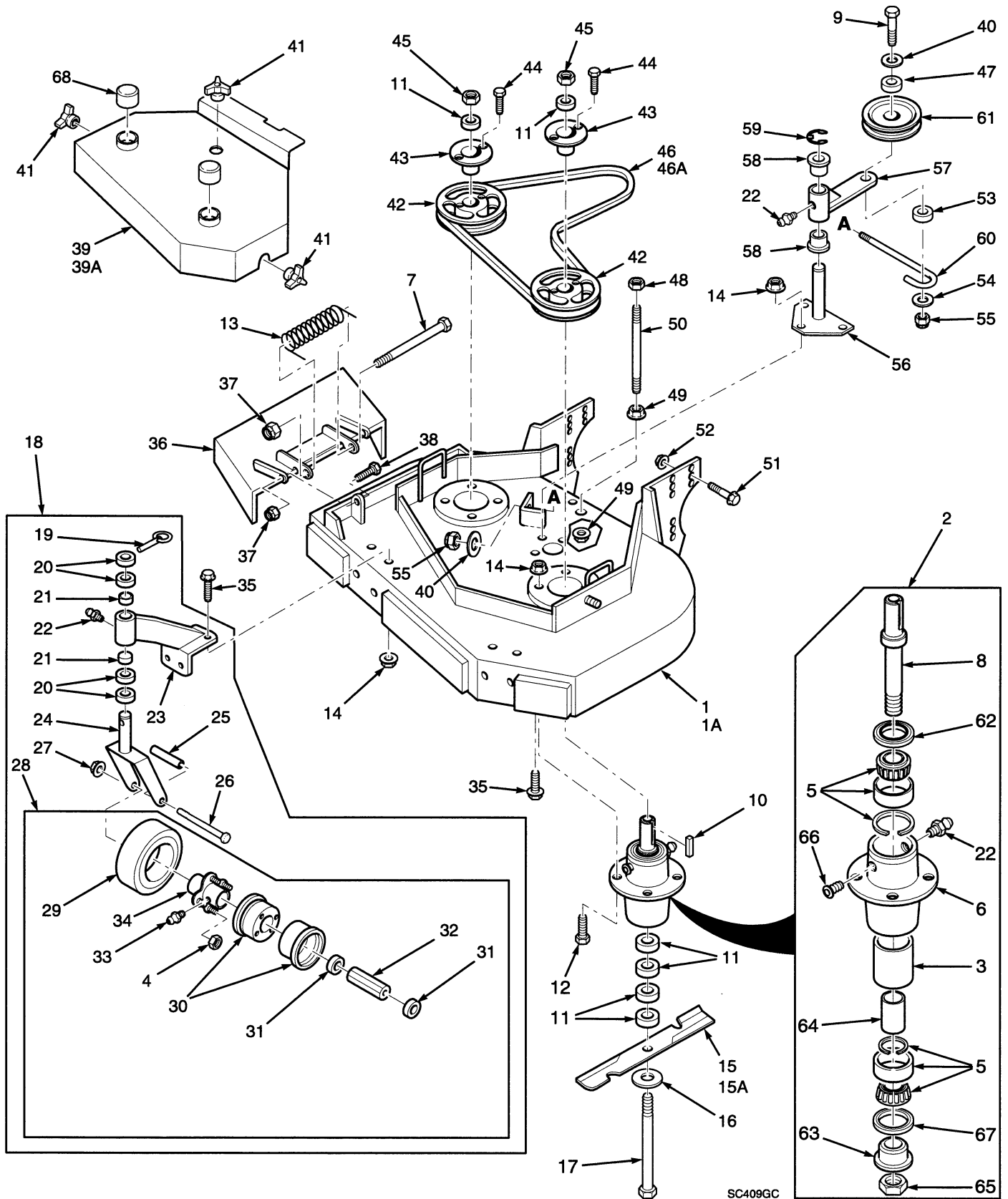
## ILLUSTRATED PARTS LIST

**THIS MANUAL CONTAINS THE ILLUSTRATED PARTS LIST FOR MODELS:**

|                   |   |
|-------------------|---|
| <b>SW32-13KA</b>  | <b>with a serial number of 24270001 to 24279999</b> |
| <b>SW36-13KA</b>  | <b>with a serial number of 24370091 to 24379999</b> |
| <b>SW36-13KH</b>  | <b>with a serial number of 24470001 to 24479999</b> |
| <b>SW48-14KA</b>  | <b>with a serial number of 24570148 to 24579999</b> |
| <b>SW48-14KH</b>  | <b>with a serial number of 24670001 to 24679999</b> |
| <b>SW48-14KAE</b> | <b>with a serial number of 24770001 to 24779999</b> |
| <b>SW-16BV</b>    | <b>with a serial number of 25070001 to 25079999</b> |
| <b>SW-18BV</b>    | <b>with a serial number of 25270001 to 25279999</b> |
| <b>SW-18CVE</b>   | <b>with a serial number of 25370001 to 25379999</b> |



## 32" & 36" CUTTER DECKS



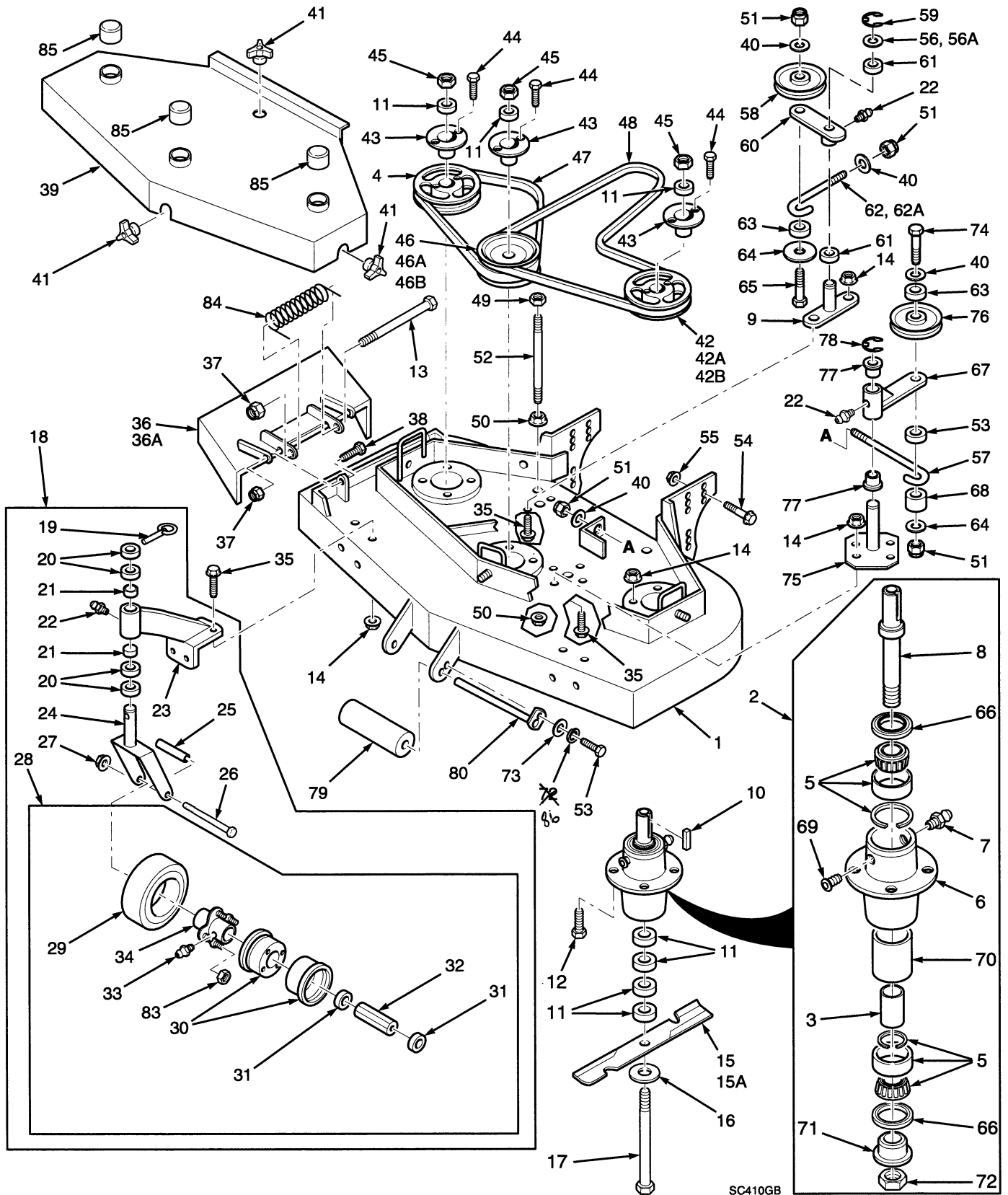
SC409GC

## 32" & 36" CUTTER DECKS

| Ref. Part No. | Part Number | Description                        | 32 | 36 | Ref. Part No. | Part Number | Description                       | 32 | 36 |
|---------------|-------------|------------------------------------|----|----|---------------|-------------|-----------------------------------|----|----|
| 1             | 46849       | Cutter Deck (Includes Decals)      | x  |    | 42            | 48924       | Pulley                            | x  | x  |
| 1A            | 46850       | Cutter Deck (Includes Decals)      |    | x  | 43            | 48926       | Tapered Hub                       | x  | x  |
| 2             | 46631       | Cutter Spindle Assy.               | x  | x  | 44            | 04001-01    | Hex Hd. Bolt, 1/4-20 x 3/4"       | x  | x  |
| 3             | 43312       | Spacer, Outside                    | x  | x  | 45            | 04020-09    | Hex Nut, 5/8-11                   | x  | x  |
| 4             | 48307-08    | Tapered Nut, 5/16-24               | x  | x  | 46            | 48278       | Belt, Blade Drive                 | x  |    |
| 5             | 481022      | Tapered Bearing (Two)              | x  | x  | 46A           | 48204       | Belt, Blade Drive                 |    | x  |
| 6             | 43294       | Spindle Housing                    | x  | x  | 47            | 43077       | Spacer                            | x  | x  |
| 7             | 04001-108   | Bolt, 5/16-18 x 4-1/4" Hex Head    | x  | x  | 48            | 04021-05    | Hex Nut, 3/8-16 Center Locknut    | x  | x  |
| 8             | 43298       | Spindle Shaft                      | x  | x  | 49            | 04019-04    | Nut, 3/8-16 Serrated Flange       | x  | x  |
| 9             | 04001-77    | Bolt, 3/8-16 x 3-1/2" Hex Head     | x  | x  | 50            | 04004-02    | Support, Belt Cover               | x  | x  |
| 10            | 04063-08    | Key, 1/4 x 1/4 x 2"                | x  | x  | 51            | 04017-42    | Cpsecrw, 7/16-14 x 1" Ser.Fig. HH | x  | x  |
| 11            | 43278       | Spacer, Cutter Blade - Small       | x  | x  | 52            | 04019-05    | Nut, 7/16-14 Serrated Flange      | x  | x  |
| 12            | 04001-10    | Bolt, 5/16-18 x 1-1/4" Hex Head    | x  | x  | 53            | 43277       | Spacer, J-Hook                    | x  | x  |
| 13            | 481050      | Spring, Chutte Return              | x  | x  | 54            | 04041-12    | Washer, 3/8 x 1-1/2 x 16 GA       | x  | x  |
| 14            | 04019-03    | Nut 5/16-18 Serrated Flange        | x  | x  | 55            | 04021-09    | Elastic Stop Nut, 3/8-16          | x  | x  |
| 15            | 48110       | Cutter Blade 16-1/2"               | x  |    | 56            | 45423       | Idler Pivot                       | x  | x  |
| 15            | 48108       | Cutter Blade, 18"                  |    | x  | 57            | 46748       | Idler Arm Assy. (Inc. 22 & 58)    | x  | x  |
| 15A           | 48184       | Cutter Blade 16-1/2 Hi Lift        | x  |    | 58            | 48100-02    | Bronze Bearing                    | x  | x  |
| 15A           | 48185       | Cutter Blade, 18 Hi Lift           |    | x  | 59            | 04050-05    | Retaining Ring, 1-1/8" Ext. "E"   | x  | x  |
| 16            | 04040-10    | Flatwasher, 5/8 W                  | x  | x  | 60            | 44078       | J-Hook                            | x  | x  |
| 17            | 04001-41    | Hex Hd. Bolt, 5/8-11 x 9-1/2"      | x  | x  | 61            | 48269       | Idler Pulley, Belt Clutch         | x  | x  |
| 18            | 46079       | Caster Assembly (Inc.19-28)        | x  | x  | 62            | 481024      | Seal, Cutter Spindle              | x  | x  |
| 19            | 04066-01    | Quick Pin                          | x  | x  | 63            | 43297       | Spindle Bushing                   | x  | x  |
| 20            | 43037-01    | Spacer, Caster Yoke, 1/2" long     | x  | x  | 64            | 43296       | Spacer, Inside                    | x  | x  |
| 21            | 48100-01    | Bronze Bearing                     | x  | x  | 65            | 481035      | Nut,                              | x  | x  |
| 22            | 48114-04    | Grease Fitting                     | x  | x  | 66            | 48677       | Relief Fitting, Cutter Spindle    | x  | x  |
| 23            | 46082       | Support Assembly (Inc. 21-23)      | x  | x  | 67            | 481025      | Seal, Cutter Spindle              | x  | x  |
| 24            | 45006       | Caster Yoke                        | x  | x  | 68            | 48098       | Spindle Shield                    | x  | x  |
| 25            | 43022       | Sleeve, Caster Wheel Bearing       | x  | x  |               |             |                                   |    |    |
| 26            | 04001-37    | Hex Hd. Bolt, 1/2-13 x 5-1/2"      | x  | x  |               |             |                                   |    |    |
| 27            | 04021-07    | Elastic Stop Nut, 1/2-13           | x  | x  |               |             |                                   |    |    |
| 28            | 48307       | Wheel Assy. (Inc.4, 29-34)         | x  | x  |               |             |                                   |    |    |
| 29            | 48307-02    | Tire only, Caster Wheel            | x  | x  |               |             |                                   |    |    |
| NS            | 48006-03    | Inner Tube only                    | x  | x  |               |             |                                   |    |    |
| 30            | 48307-04    | Rim Pair, Caster Wheel             | x  | x  |               |             |                                   |    |    |
| 31            | 48006-07    | Retainer, Bearing, Caster Wheel    | x  | x  |               |             |                                   |    |    |
| 32            | 48006-06    | Roller Bearing, Caster Wheel       | x  | x  |               |             |                                   |    |    |
| 33            | 48114-03    | Grease Fitting, 45 degree 1/4-28   | x  | x  |               |             |                                   |    |    |
| 34            | 48006-05    | Hub Assembly                       | x  | x  |               |             |                                   |    |    |
| 35            | 04017-16    | Cpsecrw,5/16-18 x 3/4" Ser.Fig. HH | x  | x  |               |             |                                   |    |    |
| 36            | 46725       | Discharge Chute                    | x  | x  |               |             |                                   |    |    |
| 37            | 04021-10    | Hex Nut, 5/16-18 Elastic Stop      | x  | x  |               |             |                                   |    |    |
| 38            | 04001-09    | Hex Hd Bolt, 5/16-18 x 1"          | x  | x  |               |             |                                   |    |    |
| 39            | 46853       | Belt Cover Assy (Includes Decal)   | x  |    |               |             |                                   |    |    |
| 39A           | 46797       | Belt Cover Assy (Includes Decal)   |    | x  |               |             |                                   |    |    |
| 40            | 04041-07    | Flat Washer, 3/8" Special          | x  | x  |               |             |                                   |    |    |
| 41            | 04029-03    | Wing Nut, 3/8-16                   | x  | x  |               |             |                                   |    |    |

\* Common hardware which should be purchased locally. All bolts are Grade 5 plated, all other fasteners zinc plated.

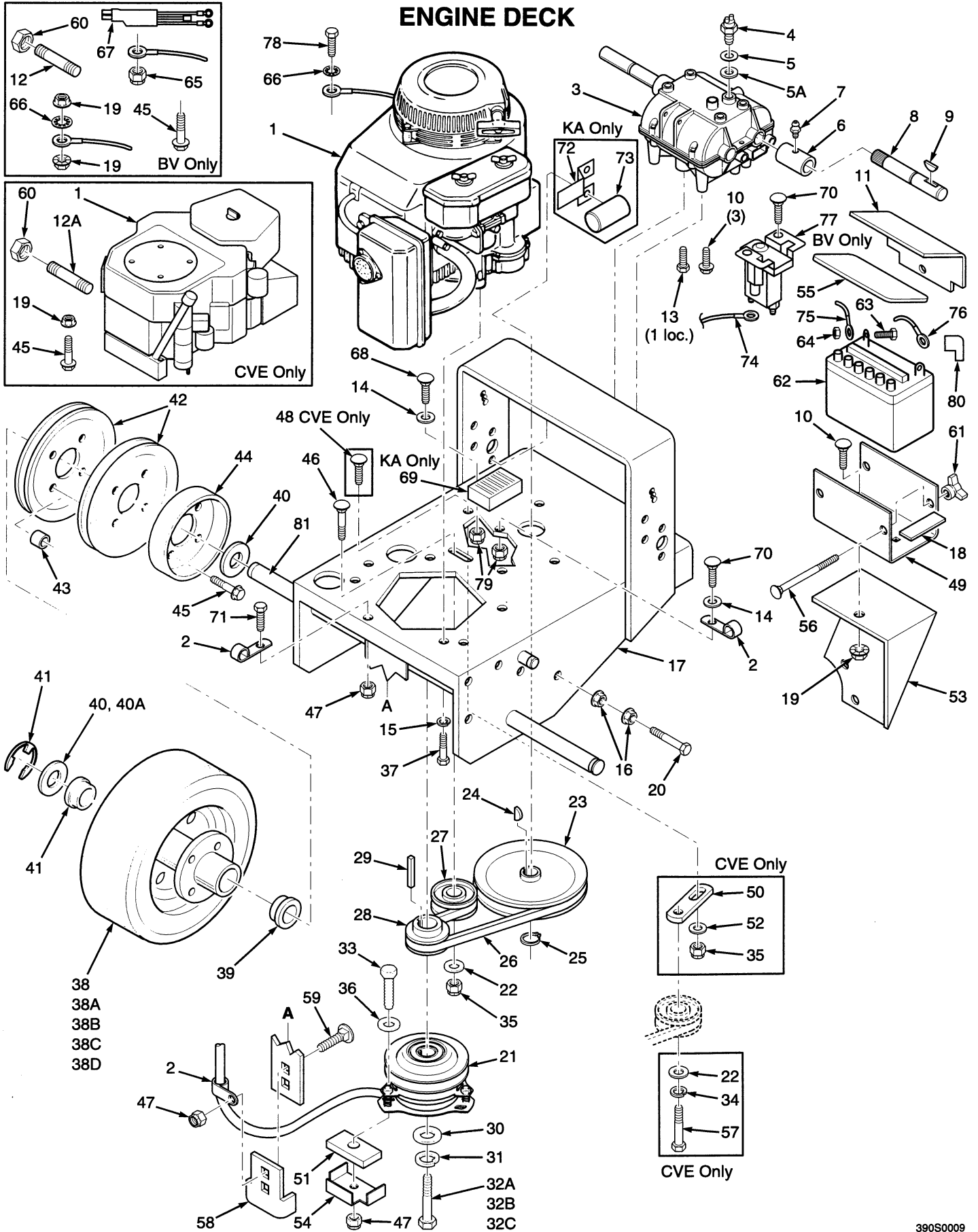
## 48", 52", 61", & 72" CUTTER DECKS



SC410GB



## ENGINE DECK

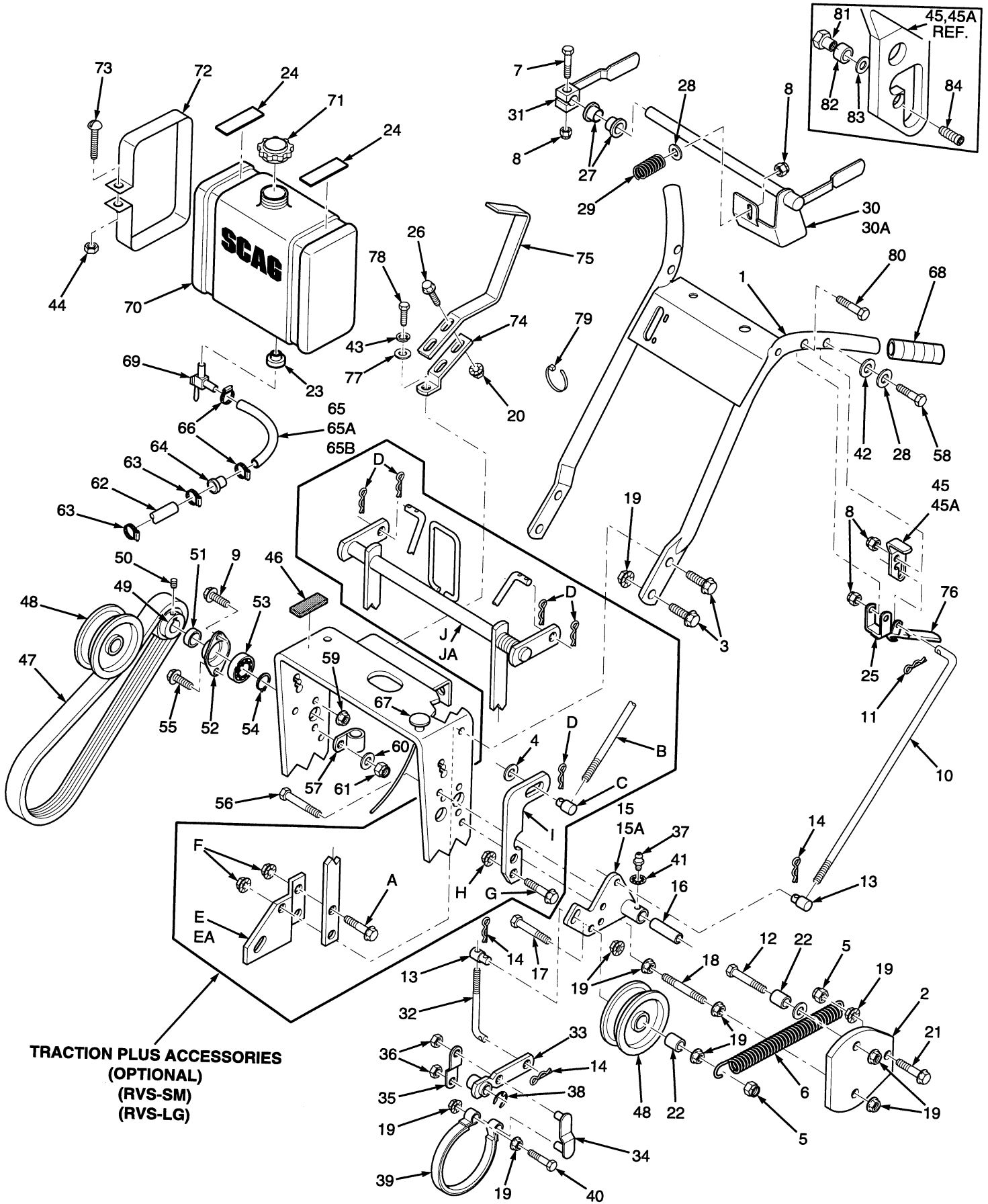


## ENGINE DECK

| Ref. Part No. | Part No.  | Description   | 13KH13KA 16BV |      |      |       | Ref. Part No. | Part No.   | Description  | 13KH13KA 16BV |      |      |       |
|---------------|-----------|---|---------------|------|------|-------|---------------|------------|--|---------------|------|------|-------|
|               |           |   | 14KH14KA      | 18BV | 18KH | 14KAE |               |            |  | 14KH14KA      | 18BV | 18BV | 14KAE |
| 1A            | 48843     | Engine, 12.5HP Kohler (PS-1256)                           | x             |      |      |       | 38B           | 48193-03   | Rim & Bearing Assembly (incl. 39)<br>(fits SW36,48,52,61 & 72) | x             | x    | x    | x     |
| 1A            | 48844     | Engine, 14HP Kohler<br>(CV 12.5T PS-1413)                 | x             |      |      |       | 38C           | 48253-02   | Tire, 13 x 5.00-6 2-ply (SW32 only)                            |               | x    |      |       |
| 1B            | 48841     | Engine 12.5HP Kawasaki<br>(FB460-ES05)                    |               | x    |      |       | 38D           | 48253-03   | Rim Assembly (incl. 39) (SW32 only)                            |               | x    |      |       |
| 1B            | 48842     | Engine, 14HP Kawasaki (FC420V)                            |               | x    |      |       | 39            | 48193-02   | Wheel Brng. NWC (OD 1.984-1.980)                               | x             | x    | x    | x     |
| 1B            | 481052    | Engine, 14HP Kawasaki Elec. Start                         |               | x    |      |       | 40            | 04042-05   | Washer, 1-1/16 x 1-3/4 x 12 ga                                 | x             | x    | x    | x     |
| 1C            | 481065    | Engine, 16HP Briggs Vanguard<br>(303772 0345 02)          |               |      | x    |       | 40A           | 04041-14   | Washer, 1-1/16 x 1-1/2 x 18 ga                                 | x             | x    | x    | x     |
| 1C            | 48766     | Engine, 16HP BVE  |               |      | x    |       | 41            | 04050-08   | Retaining Ring, 1" Ext. - "E"                                  | x             | x    | x    | x     |
| 1C            | 481066    | Engine, 18HP Briggs Vanguard                              |               |      | x    |       | 42            | 48200      | Pulley, Wheel Drive  | x             | x    | x    | x     |
| 1D            | 48969     | Engine, 18HP Kohler<br>(Electric Start V-Twin)            |               |      |      | x     | 43            | 43088      | Spacer, Wheel Pulley   | x             | x    | x    | x     |
| 2             | 48030-09  | Cable Clamp   | x             | x    | x    | x     | 44            | 48209      | Brake Drum   | x             | x    | x    | x     |
| 3             | 48331     | Transmission, 5-speed<br>(Peerless 700-026)               | x             | x    | x    | x     | 45            | 04017-19   | Bolt, 5/16-18 x 1-1/2" Serrated Flange                         |               |      | x    | x     |
| 4             | 48231     | Neutral Safety Switch                                     | x             | x    | x    | x     | 46            | 04003-03   | Bolt, 3/8-16 x 2" Carriage                                     | x             | x    | x    | x     |
| 5             | 48122-01  | Fibre Washer, thin  | x             | x    | x    | x     | 47            | 04021-10   | Nut, 5/16-18 Elastic Stop                                      | x             | x    | x    | x     |
| 5A            | 48122-02  | Fibre Washer, thick                                       | x             | x    | x    | x     | 48            | 04003-11   | Bolt, 3/8-16 x 1-1/4" Carriage                                 |               |      |      | x     |
| 6             | 48851     | Coupler, Jackshaft  | x             | x    | x    | x     | 49            | 421703     | Battery Box  |               | x    | x    | x     |
| 7             | 48114-05  | Grease Fitting, straight 1/4-28                           | x             | x    | x    | x     | 50            | 42330      | Bracket, Idler Pulley  |               |      |      | x     |
| 8             | 48225     | Jackshaft (fits SW32,36 & 48)                             | x             | x    |      |       | 51            | 48814      | Rubber Pad, Clutch Stop  | x             | x    | x    | x     |
| 8A            | 48242     | Jackshaft (fits SW52,61 & 72)                             |               |      | x    | x     | 52            | 04041-11   | Washer, 13/32 x 1-3/4 x 7 ga                                   |               |      |      | x     |
| 9             | 04063-09  | Key, Hi-Pro #9  | x             | x    | x    | x     | 53            | 45685      | Battery Support Weldment                                       |               | x    | x    | x     |
| 10            | 04003-12  | Bolt, 5/16-18 X 3/4" Carriage                             | x             | x    | x    | x     | 54            | 421564     | Backing Plate  | x             | x    | x    | x     |
| 11            | 421408    | Battery Cover   |               | x    | x    | x     | 55            | 48099      | Battery Cover Pad  |               |      |      | x     |
| 12            | 48402-03  | Oil Drain Extention 5-1/4"                                |               |      | x    |       | 56            | 04003-01   | Bolt, 1/4-20 x 6" carriage                                     |               |      |      | x     |
| 12A           | 48402-04  | Oil Drain Extention 4-3/4"                                |               |      |      | x     | 57            | 04001-21   | Bolt, 3/8-16 x 1-3/4" Hex Head                                 |               |      |      | x     |
| 13            | 04001-08  | Bolt, 5/16-18 X 3/4" Hex Head                             | x             | x    | x    | x     | 58            | 421370     | Anti Rotation Bracket  | x             | x    | x    | x     |
| 14            | 04040-14  | Flat Washer 1/4" (.312 X .75 X .065)                      | x             | x    | x    | x     | 59            | 04003-04   | Bolt, 5/16-18 x 1" Carriage                                    | x             | x    | x    | x     |
| 15            | 04030-03  | Lock Wshr. 5/16"  | x             | x    | x    | x     | 60            | 48257      | Pipe Cap   |               |      |      | x     |
| 16            | 04019-04  | Nut, 3/8-16 Serrated Flange                               | x             | x    | x    | x     | 61            | 04029-01   | Wing Nut, 1/4-20   |               |      | x    | x     |
| 17            | 46764     | Engine Deck (fits SW32)                                   |               |      |      |       | 62            | 48015      | Battery  |               | x    | x    | x     |
| 17A           | 46765     | Engine Deck (fits SW36 & 48)                              |               |      |      |       | 63            | 04001-44   | Bolt, 1/4-20 x 1/2" Hex Head                                   |               |      | x    | x     |
| 17B           | 46766     | Engine Deck (fits SW52,61 & 72)                           |               |      |      |       | 64            | 04020-02   | Nut, 1/4-20  |               |      | x    | x     |
| 18            | 48661     | Rubber Pad  |               |      |      | x     | 65            | 04021-08   | Nut, 1/4-20 Elastic Stop                                       | x             | x    | x    | x     |
| 19            | 04019-03  | Nut, 5/16-18 Serrated Flange                              |               | x    | x    | x     | 66            | 04031-09   | Lock Washer Internal Tooth                                     | x             | x    | x    | x     |
| 20            | 04001-51  | Bolt, 3/8-16 x 3-3/4" Hex Head                            | x             | x    | x    | x     | 67            | 481077     | Wire Harness Adapter, Man. Start                               |               |      |      | x     |
| 21            | 48786     | Electric Clutch   | x             | x    | x    | x     | 67            | 481054     | Wire Harness Adapter, Elec. Start                              |               |      |      | x     |
| 22            | 04041-07  | Washer, 3/8" (.391 x .938 x .105)                         | x             | x    | x    | x     | 68            | 04001-59   | Bolt, 1/4-20 x 1-1/4"  | x             | x    |      |       |
| 23            | 48197     | Pulley, Transmission Input                                | x             | x    | x    | x     | 69            | 21066-2071 | Rectifier (order from Kawasaki)                                |               |      | x    |       |
| 24            | 04063-07  | Key, Woodruff #9  | x             | x    | x    | x     | 70            | 04003-02   | Bolt, 1/4-20 x 3/4" Carriage                                   | x             | x    | x    | x     |
| 25            | 04050-09  | Retaining Ring, 5/8" Ext, Basic                           | x             | x    | x    | x     | 71            | 04001-09   | Bolt, 5/16-18 x 1" Hex Head                                    | x             | x    | x    | x     |
| 26            | 48203     | Belt, Transmission Drive                                  | x             | x    | x    | x     | 72            | 421390     | Bracket, Capacitor   |               |      |      | x     |
| 27            | 481048    | Idler Pulley, Transmission                                | x             | x    | x    | x     | 73            | 21013-2064 | Condenser (order from Kawasaki)                                |               |      | x    |       |
| 28            | 48945     | Pulley, Traction Drive                                    | x             | x    | x    | x     | 74            | 48029-06   | Battery Cable, 18" Red   |               |      |      | x     |
| 29            | 04063-19  | Key, 1/4 x 1/4 x 3/4"                                     | x             | x    | x    | x     | 75            | 48029-11   | Battery Cable, 27" Black                                       |               |      | x    |       |
| 30            | 04041-18  | Flat Washer, 7/16" Special                                | x             | x    | x    | x     | 75            | 48029-15   | Battery Cable, 36" Black                                       |               |      |      | x     |
| 31            | 04030-05  | Lock Washer, 7/16"  | x             | x    | x    | x     | 75            | 48029-14   | Battery Cable, 31" Black                                       |               |      |      | x     |
| 32A           | 04001-101 | Bolt, 7/16-20 x 2-1/2" Hex Head                           |               |      |      | x     | 76            | 48029-02   | Battery Cable, 31.5" Red                                       |               | x    | x    | x     |
| 32B           | 04001-102 | Bolt, 7/16-20 x 1-3/4" Hex Head                           |               |      |      | x     | 77            | 48016      | Starter Solenoid   |               |      |      | x     |
| 32C           | 04002-08  | Cpsrw, M10-1.5 x 60 Metric Hex Hd                         | x             | x    |      |       | 78            | 04002-07   | Bolt, M8-1.25 x 1.0  |               | x    |      |       |
| 33            | 04001-10  | Bolt, 5/16-18 x 1-1/4" Hex Head                           | x             | x    | x    | x     | 79            | 04021-08   | Nut, 1/4-20 Elastic Stop                                       | x             | x    | x    | x     |
| 34            | 04030-04  | Lockwasher, Spring 3/8"                                   |               |      |      | x     | 80            | 48126      | Rubber Boot  |               |      | x    | x     |
| 35            | 04021-09  | Nut, 3/8-16 Elastic Stop                                  | x             | x    | x    | x     | 81A           | 43100      | Wheel Axle (SW 52,61,72)                                       |               |      | x    | x     |
| 36            | 04040-15  | Flat Washer, 5/16"  | x             | x    | x    | x     | 81B           | 43085      | Wheel Axle (SW36,48)   | x             | x    | x    |       |
| 37            | 04018-01  | Bolt, M8-1.25 x M25 Metric Hex Hd                         | x             | x    |      |       | 81C           | 43104      | Wheel Axle (SW 32)   |               |      | x    |       |
| 38            | 48192     | Wheel Assembly (incl. 38A-38B)<br>(fits SW36,48,52,61,72) | x             | x    | x    | x     |               |            |  |               |      |      |       |
| 38            | 48253     | Wheel Assembly<br>(incl. 38C-38D) (SW32)                  | x             | x    |      |       |               |            |  |               |      |      |       |
| 38A           | 48192-02  | Tire, 13 x 6.50-6, 2-ply<br>(fits SW36,48,52,61 & 72)     | x             | x    | x    | x     |               |            |  |               |      |      |       |



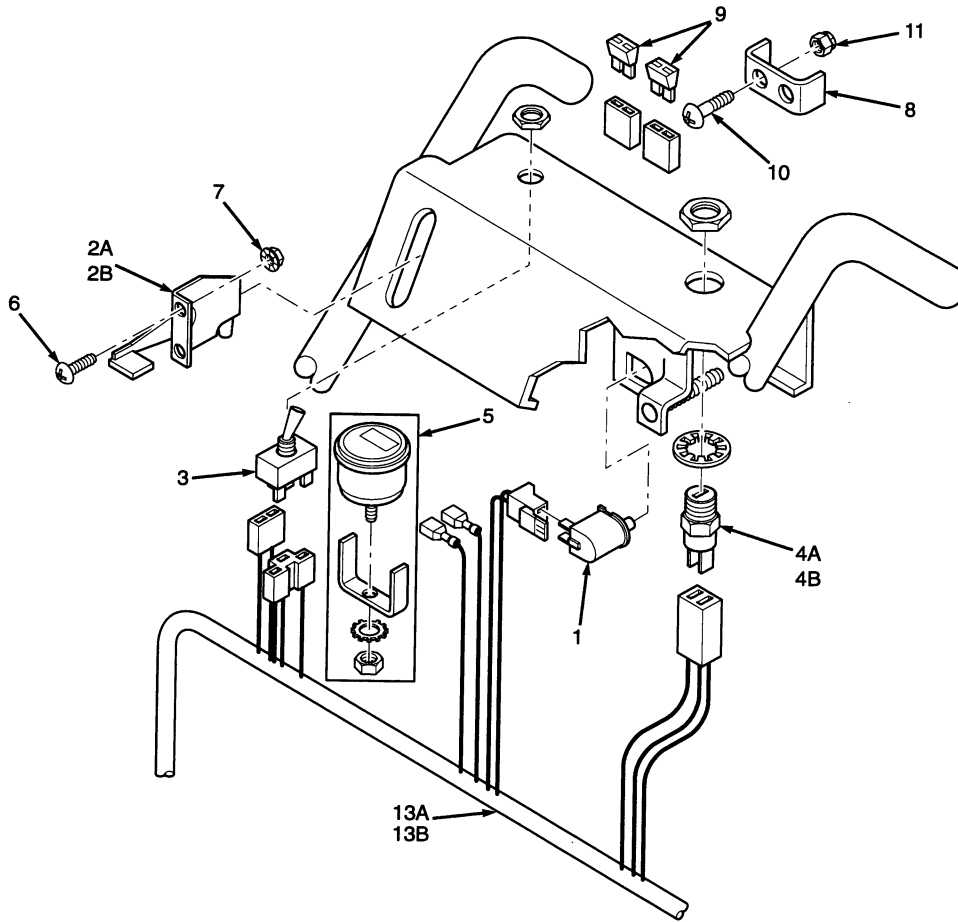
## HANDLE ASSEMBLY



## HANDLE ASSEMBLY

| Ref. No. | Part No. | Description   | 13KH13KA 16BV |      |       | Ref. No.   | Part No. | Description                           | 13KH13KA 16BV |      |       |   |
|----------|----------|---|---------------|------|-------|--|----------|---------------------------------------|---------------|------|-------|---|
|          |          |   | 14KH14KA      | 18BV | 18BVE |  |          |                                       | 14KH14KA      | 18BV | 18BVE |   |
|          |          |   | 14KAE         |      |       |  |          |                                       | 14KAE         |      |       |   |
| 1        | 46801    | Handle Assembly (Fits SW 36,48)                     | x             | x    |       | 54   | 04050-09 | Retaining Ring, 5/8 Ext. Basic        | x             | x    | x     | x |
| 1        | 46856    | Handle Assembly (Fits SW52,61,72)                   | x             | x    | x     | 55   | 04017-06 | Capscrew, 1/4-20 x 1" Ser. Flange     | x             | x    | x     | x |
| 2        | 421360   | Belt Guard  | x             | x    | x     | 56   | 04003-01 | Bolt, 1/4-20 x 6" Carriage            |               |      |       | x |
| 3        | 04017-27 | Capscrew, 3/8-16 x 1" Ser. Flange                   | x             | x    | x     | 57   | 48030-09 | Clamp                                 | x             | x    | x     | x |
| 4        | 04001-17 | Washer, 3/8" (.391 x .938 x .105)                   | x             | x    | x     | 58   | 04001-17 | Bolt, 5/16-18 x 2" Hex Head           | x             | x    | x     | x |
| 5        | 04021-09 | Nut, 3/8-16 Elastic Stop                            | x             | x    | x     | 59   | 04019-02 | Nut, 1/4-20 Serrated Flange           | x             | x    | x     | x |
| 6        | 48755    | Spring, Idler                                       | x             | x    | x     | 60   | 04040-15 | Flatwasher, 5/16 (.375 x .875 x .083) | x             | x    | x     | x |
| 7        | 04001-10 | Bolt, 5/16-18 x 1-1/4" Hex Head                     | x             | x    | x     | 61   | 04021-02 | Nut, 1/4-20 Elastic Stop              | x             | x    | x     | x |
| 8        | 04021-10 | Nut, 5/16-18 Elastic Stop                           | x             | x    | x     | 62   | 48179    | Fuel Hose (Kawasaki Only)             |               | x    |       |   |
| 9        | 04017-05 | Capscrew, 1/4-20 x 3/4" Hex Head                    | x             | x    | x     | 63   | 48059-02 | Fuel Hose Clamp (Kaw. Only)           |               | x    |       |   |
| 10       | 44004    | Control Rod, Steering                               | x             | x    | x     | 64   | 48057-02 | Fuel Filter (Kawasaki Only)           |               | x    |       |   |
| 11       | 04062-02 | Hair Pin, Small                                     | x             | x    | x     | 65   | 48058    | Fuel Hose, 1/4"ID, 10" (Kohler Only)  | x             |      |       |   |
| 12       | 04001-23 | Bolt, 3/8-16 x 4-1/2" Hex Head                      | x             | x    | x     | 65A  | 48058    | Fuel Hose, 1/4"ID, 20" (KAW & Brigs)  |               | x    |       |   |
| 13       | 43032    | Swivel Joint  | x             | x    | x     | 65B  | 48058    | Fuel Hose, 1/4"ID, 23" (Kohler 18CVE) |               |      |       | x |
| 14       | 04062-01 | Hair Pin, Large .094 Diameter                       | x             | x    | x     | 66   | 48059-01 | Clamp, Fuel Hose                      | x             | x    | x     | x |
| 15       | 45847    | Idler Bracket, RH                                   | x             | x    | x     | 67   | 481072   | Choke Control                         |               |      | x     |   |
| 15A      | 45846    | Idler Bracket, LH                                   | x             | x    | x     | 67   | 48780    | Choke Control                         |               |      |       | x |
| 16       | 43092    | Idler Sleeve  | x             | x    | x     | 68   | 48159    | Grip, Handle                          | x             | x    | x     | x |
| 17       | 04001-62 | Bolt, 3/8-16 x 3/4" Hex Head                        | x             | x    | x     | 69   | 48308    | Valve, Fuel Shut Off                  | x             | x    | x     | x |
| 18       | 04004-17 | Support Belt Guard                                  | x             | x    | x     | 70   | 46174    | Fuel Tank Assy. (Incl. Bush. & Valve) | x             | x    | x     | x |
| 19       | 04019-04 | Nut, 3/8-16 Serrated Flange                         | x             | x    | x     | 71   | 48311    | Fuel Tank Cap                         | x             | x    | x     | x |
| 20       | 04019-03 | Nut, 5/16-18 Serrated Flange                        | x             | x    | x     | 72   | 421239   | Strap, Fuel Tank                      | x             | x    | x     | x |
| 21       | 04017-28 | Cpscrew, 3/16-18 x 1-1/4" Ser. Flng.                | x             | x    | x     | 73   | 04010-10 | Screw, 1/4-20 x 2" Round Hd Slotted   | x             | x    | x     | x |
| 22       | 43286    | Spacer  | x             | x    | x     | 74   | 42388    | Shift Lever                           | x             | x    | x     | x |
| 23       | 48309    | Bushing   | x             | x    | x     | 75   | 421241   | Shift Lever Extention                 | x             | x    | x     | x |
| 24       | 48292    | Rubber Pads, (Upper)                                | x             | x    | x     | 76   | 48144    | Grip, Steering Lever                  | x             | x    | x     | x |
| 25       | 46089    | Steering Lever                                      | x             | x    | x     | 77   | 04043-01 | Washer, 1/4 (.265 x .875 x .125)      | x             | x    | x     | x |
| 26       | 04017-17 | Capscrew, 5/16-18 x 1" Ser. Flng.                   | x             | x    | x     | 78   | 04001-55 | Bolt, 1/4-28 x 3/4" Hex Head Grd 8    | x             | x    | x     | x |
| 27       | 48312    | Bushing   | x             | x    | x     | 79   | 48028-05 | Cable Tie                             | x             | x    | x     | x |
| 28       | 04040-15 | Washer, 5/16 (.375 x .875 x .083)                   | x             | x    | x     | 80   | 04001-53 | Bolt, 5/16-18 x 2-1/2"                | x             | x    | x     | x |
| 29       | 48951    | Spring, Operator Presence                           | x             | x    | x     | 81   | 481411   | Bushing, Bearing Retainer             | x             | x    | x     | x |
| 30       | 45573    | Operator Presence Lever, LH (Small Frame)           | x             | x    |       | 82   | 481420   | Bearing                               | x             | x    | x     | x |
| 30A      | 45571    | Operator Presence Lever, LH (Large Frame)           | x             | x    | x     | 83   | 04041-23 | Washer, #8-.170 x .375 x .032         | x             | x    | x     | x |
| 31       | 45572    | Operator Presence Lever, RH                         | x             | x    | x     | 84   | 04015-13 | Socket Head Capscrew #8-32 x 1/2"     | x             | x    | x     | x |
| 32       | 44005    | Brake Rod   | x             | x    | x     | <b>Traction Plus Accessories (Optional), RVS-SM &amp; RVS-LG</b> |          |                                       |               |      |       |   |
| 33       | 45092    | Brake Lever   | x             | x    | x     | A  | 04017-27 | Capscrew, 3/8-16 x 1" Ser. Flng       | x             | x    | x     | x |
| 34       | 45093    | Brake Link  | x             | x    | x     | B  | 44098    | Rod, Traction Control                 | x             | x    | x     | x |
| 35       | 42254    | Brake Link Plate                                    | x             | x    | x     | C  | 43023    | Swivel Joint                          | x             | x    | x     | x |
| 36       | 04024-01 | Nut, 3/8 Push-on                                    | x             | x    | x     | D  | 04062-01 | Hair Pin, Large .094 Dia.             | x             | x    | x     | x |
| 37       | 48114-05 | Grease Fitting, Straight 1/4-28                     | x             | x    | x     | E  | 421372   | Mounting Brkt. LH Traction Cont.      | x             | x    | x     | x |
| 38       | 04050-01 | Retaining Ring, 5/8 Ext. "E"                        | x             | x    | x     | EA   | 421373   | Mounting Brkt. RH Traction Cont.      | x             | x    | x     | x |
| 39       | 48210    | Brake Band  | x             | x    | x     | F  | 04019-04 | Nut, 3/8-16 Serrated Flange           | x             | x    | x     | x |
| 40       | 04001-45 | Bolt, 3/8-16 x 2" Hex Head                          | x             | x    | x     | G  | 04017-16 | Capscrew, 5/16-18 x 3/4" Ser. Fig.    | x             | x    | x     | x |
| 41       | 04031-08 | 1/4" Internal Tooth Lockwasher                      | x             | x    | x     | H  | 04019-03 | Nut, 5/16-18 Serrated Flange          | x             | x    | x     | x |
| 42       | 04032-01 | Curved Spring Washer                                | x             | x    | x     | I  | 421428   | Traction Lever, LH                    | x             | x    | x     | x |
| 43       | 04030-02 | Lockwasher, 1/4 Spring                              | x             | x    | x     | IA   | 421429   | Traction Lever, RH                    | x             | x    | x     | x |
| 44       | 04020-02 | Nut, 1/4-20 Hex                                     | x             | x    | x     | J  | 45554    | Traction Lever Wldmnt. (Small Fm.)    | x             | x    |       |   |
| 45       | 46942    | Neutral Latch, RH                                   | x             | x    | x     | JA   | 45555    | Traction Lever Wldmnt. (Large Fm.)    | x             | x    | x     | x |
| 45A      | 46941    | Neutral Latch, LH                                   | x             | x    | x     |  |          |                                       |               |      |       |   |
| 46       | 48205    | Rubber Pad (Lower)                                  | x             | x    | x     |  |          |                                       |               |      |       |   |
| 47       | 48202A   | Belt, Wheel Drive                                   | x             | x    | x     |  |          |                                       |               |      |       |   |
| 48       | 48198    | Idler Pulley, Wheel Drive                           | x             | x    | x     |  |          |                                       |               |      |       |   |
| 49       | 48199    | Pulley, Jackshaft (Inc. 50)                         | x             | x    | x     |  |          |                                       |               |      |       |   |
| 50       | 04012-04 | Setscrew, Hex Socket Knurl Cup Pt. 5/16-18 (nylock) | x             | x    | x     |  |          |                                       |               |      |       |   |
| 51       | 43098    | Spacer, Jackshaft Pulley                            | x             | x    | x     |  |          |                                       |               |      |       |   |
| 52       | 48223    | Flange, Jackshaft Bearing                           | x             | x    | x     |  |          |                                       |               |      |       |   |
| 53       | 48224    | Bearing, Jackshaft                                  | x             | x    | x     |  |          |                                       |               |      |       |   |

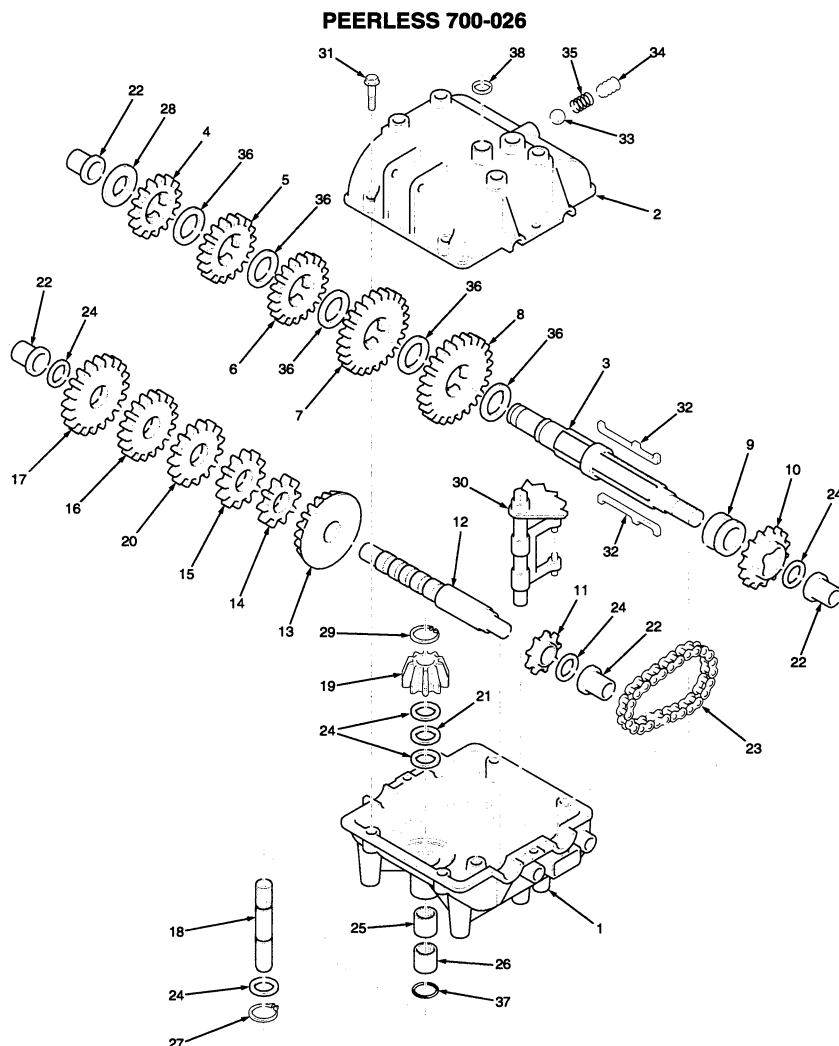
## INSTRUMENT PANEL



SC413GB

| REF. PART NO. | NO.      | DESCRIPTION  | 13KH | 13KA | 16BV |       |
|---------------|----------|--|------|------|------|-------|
|               |          |  | 14KH | 14KA | 18BV | 18CVE |
| 1             | 48717    | Switch, Neutral Interlock                              | X    | X    | X    | X     |
| 2A            | 481071   | Throttle Control                                       | X    | X    |      |       |
| 2B            | 48946    | Throttle Control                                       |      |      | X    | X     |
| 3             | 48787    | Engagement Switch, Electric Clutch (Includes hardware) | X    | X    | X    | X     |
| 4A            | 48609    | Key Switch (Includes hardware)                         | X    | X    | X    |       |
| 4B            | 48798    | Key Switch (Includes hardware)                         |      |      |      | X     |
| 5             | 48023    | Hour Meter (dealer installed)                          | X    | X    | X    | X     |
| 6             | *        | Screw, #10-32 x .50 Phillips Washer Head               | X    | X    | X    | X     |
| 7             | 04019-01 | Nut, #10-32 Serrated Flange Hex Head                   | X    | X    | X    | X     |
| 8             | 42413    | Bracket, Fuse Holder                                   |      | X    | X    | X     |
| 9             | 48298    | Blade Fuse, 20A  |      | X    | X    | X     |
| 10            | *        | Screw, #10-32 x 1-1/2"                                 |      | X    | X    | X     |
| 11            | 04021-01 | Nut, #10-32 Elastic Stop                               |      | X    | X    | X     |
| 12            | 48951    | Spring, Operator Presence                              | X    | X    | X    | X     |
| 13A           | 481267   | Handle Wire Harness, Electric Start                    |      | X    |      |       |
| 13B           | 481266   | Handle Wire Harness, Manual Start                      |      |      |      | X     |
| NS            | 48030-09 | Clamp, Wire Harness                                    | X    | X    | X    |       |

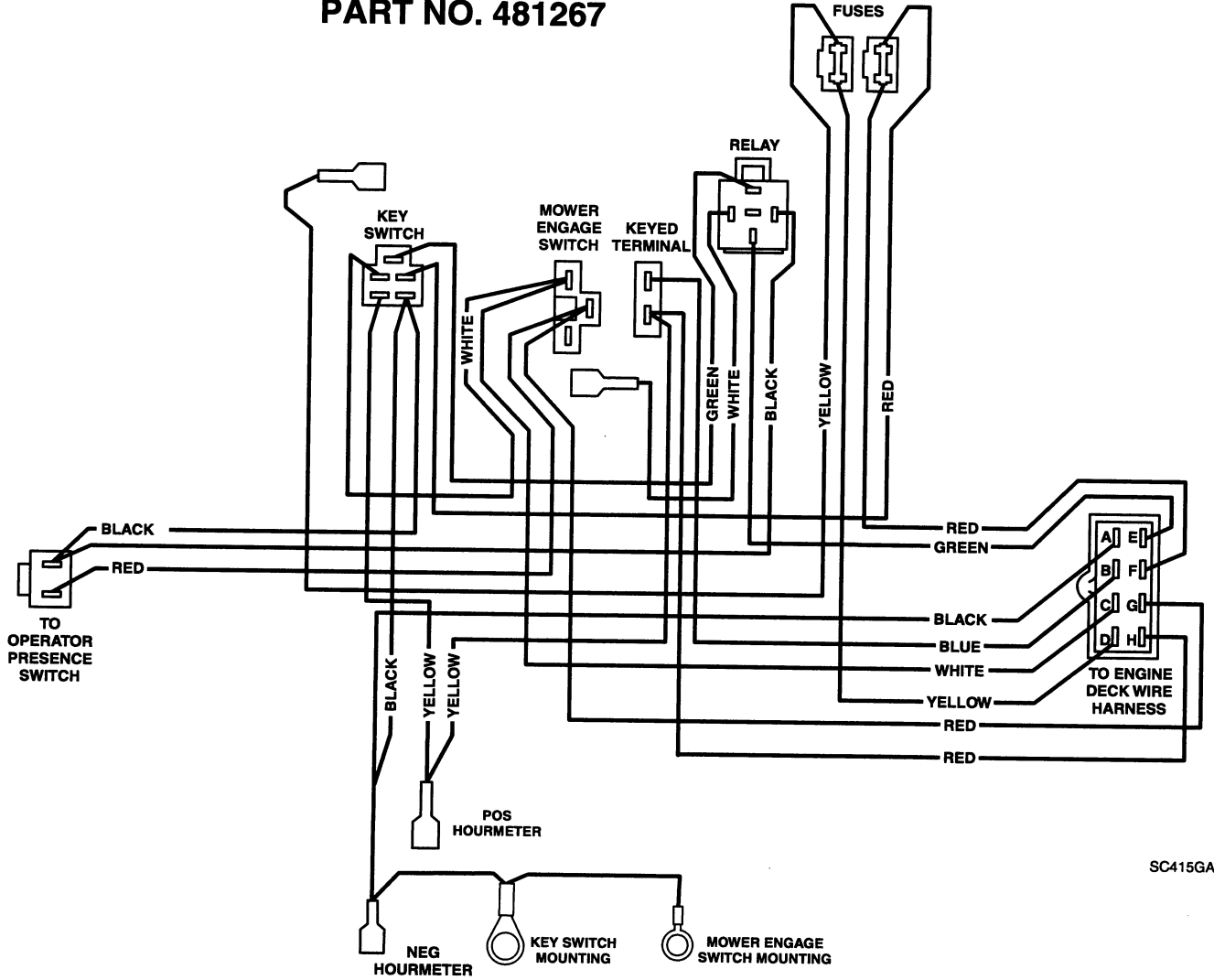
\* Common hardware which should be purchased locally. All bolts grade 5 plated, all other fasteners zinc plated.



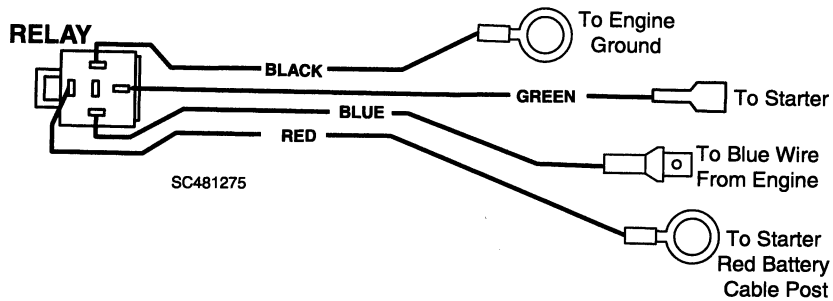
SC4140

| REF. PART NO. NO. | DESCRIPTION                   | REF. PART NO. NO. | DESCRIPTION  |
|-------------------|-------------------------------|-------------------|--|
| 1                 | 770061 Case, Transmisson      | 22                | 780105A Bushing, Flanged                             |
| 2                 | 772083 Cover, Transmission    | 23                | 786081 Chain, Roller (No.41 chain,24 links)          |
| 3                 | 776217 Shaft, Output & Brake  | 24                | 780072 Washer, Thrust                                |
| 4                 | 778123A Gear, Spur (25 teeth) | 25                | 780086 Bearing, Needle                               |
| 5                 | 778124A Gear, Spur (30 teeth) | 26                | 780142 Bearing, Needle                               |
| 6                 | 778239 Gear, Spur (32 teeth)  | 27                | 792035 Ring, Retaining                               |
| 7                 | 778125 Gear, Spur (35 teeth)  | 28                | 780139 Washer, Thrust                                |
| 8                 | 778146A Gear, Spur (37 teeth) | 29                | 788040 Ring, Retaining                               |
| 9                 | 784266 Collar, Shift          | 30                | 784267 Rod & Fork Assy., Shift                       |
| 10                | 786083 Sprocket (18 teeth)    | 31                | 792073 Screw, Flanged Hex Hd Thread, 1/4-20 x 1-1/4" |
| 11                | 786082 Sprocket (9 teeth)     | 32                | 792089A Key  |
| 12                | 776134 Shaft, Counter         | 33                | 792077 Ball, Steel, 5/16"                            |
| 13                | 778154 Gear, Bevel (42 teeth) | 34                | 792078 Screw, Set 3/8-16 x 3/8"                      |
| 14                | 778145 Gear, Spur (12 teeth)  | 35                | 792079 Spring  |
| 15                | 778151 Gear, Spur (15 teeth)  | 36                | 780108 Washer, Thrust                                |
| 16                | 778126A Gear, Spur (20 teeth) | 37                | 792001 "O" Ring                                      |
| 17                | 778127A Gear, Spur (25 teeth) | 38                | 788069 Seal, Square cut                              |
| 18                | 776135 Shaft, Input           |                   |  |
| 19                | 779176 Bevel Pinion, Input    |                   |  |
| 20                | 778240 Gear, Spur (18 teeth)  |                   |  |
| 21                | 780071 Bearing, Thrust        |                   |  |

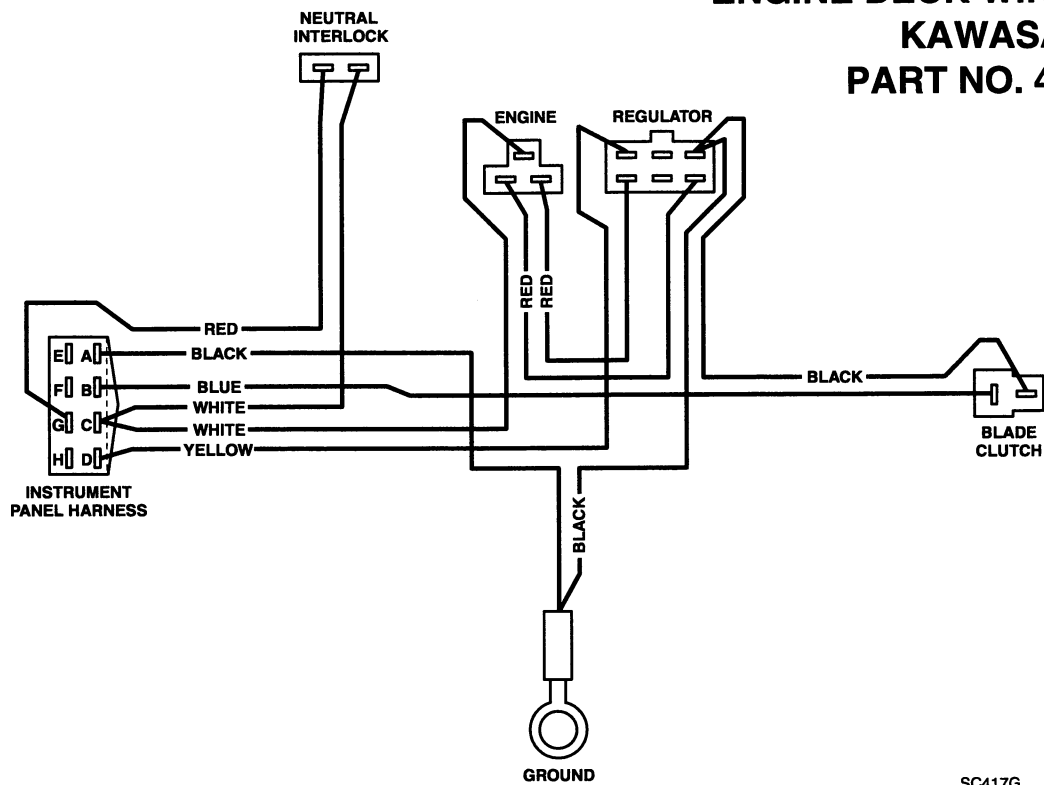
## HANDLE WIRE HARNESS - ELECTRIC START PART NO. 481267



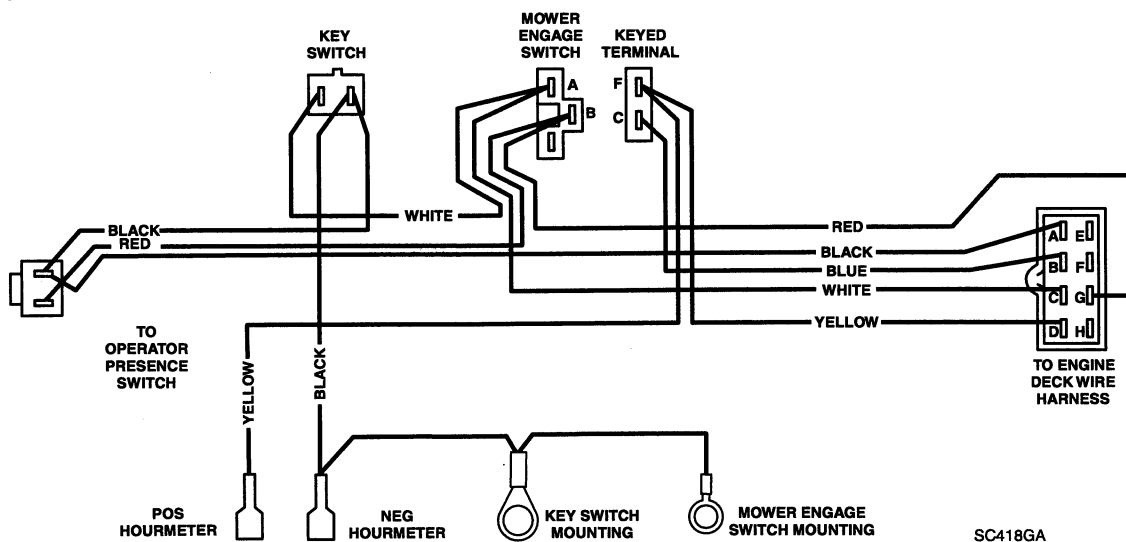
## WIRE HARNESS WITH RELAY PART NO. 481275

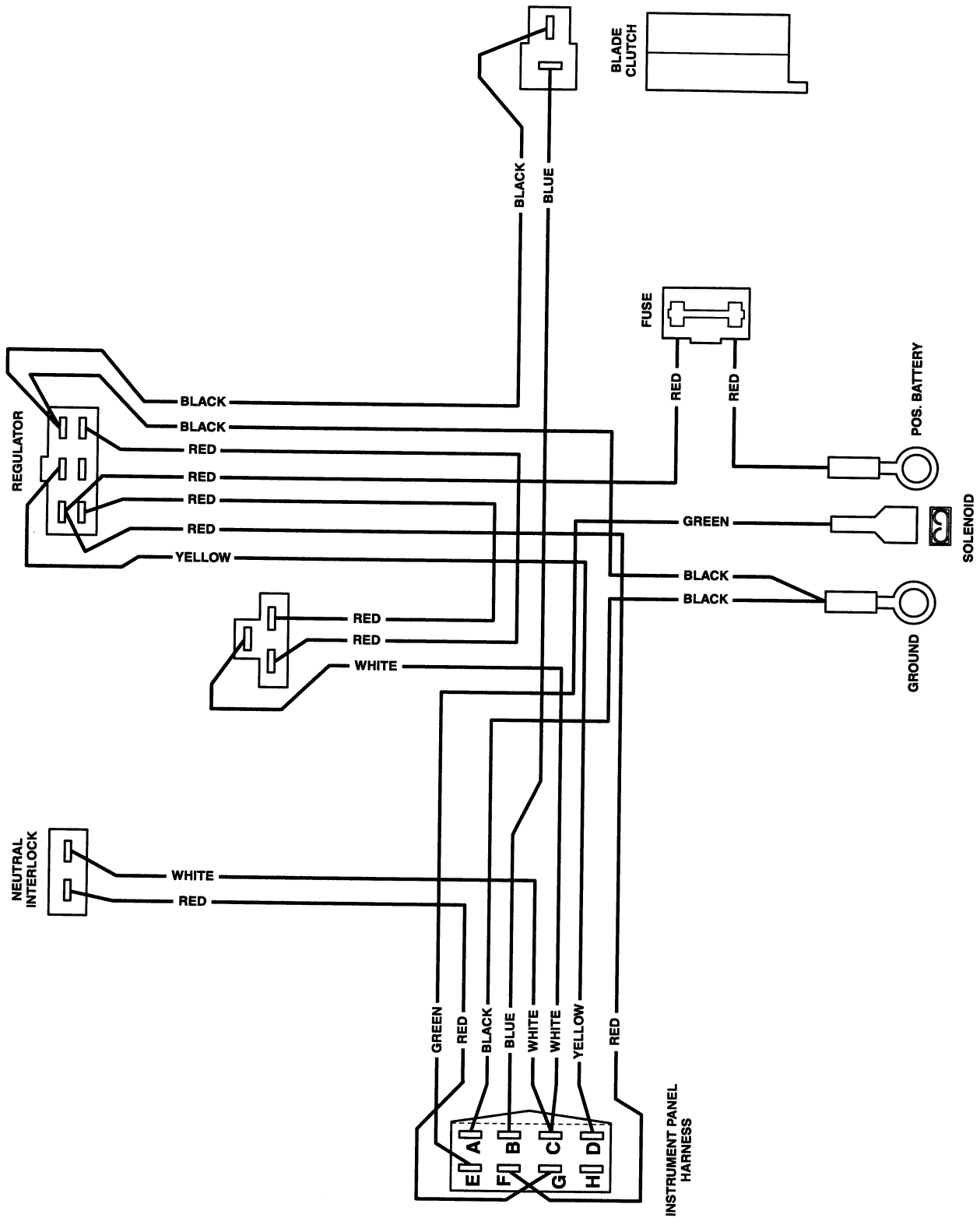


## ENGINE DECK WIRE HARNESS - KAWASAKI PART NO. 481074



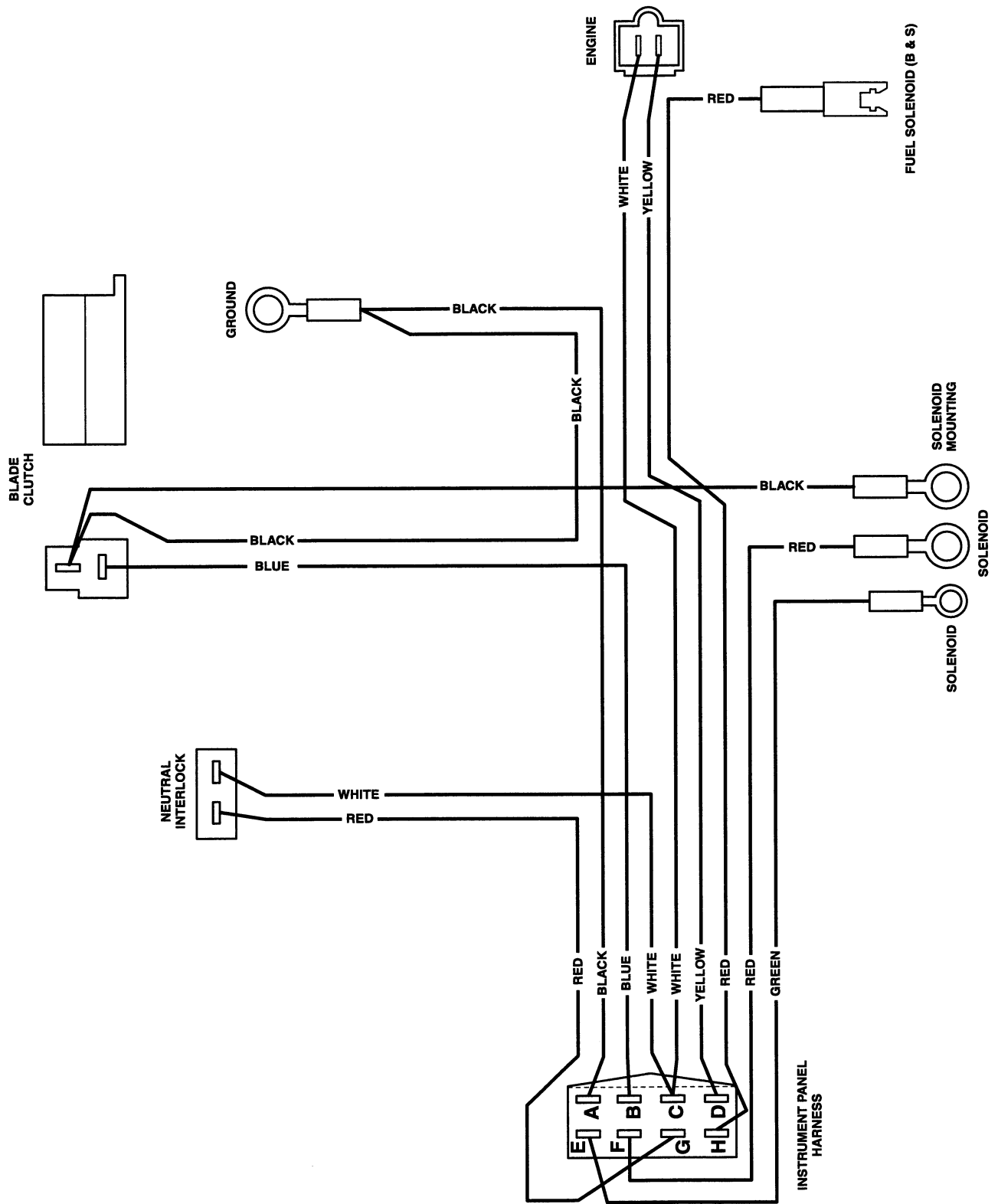
## HANDLE WIRE HARNESS - MANUAL START PART NO. 481266





**ENGINE DECK WIRE HARNESS - SW48-14KAE  
PART NO. 481051**

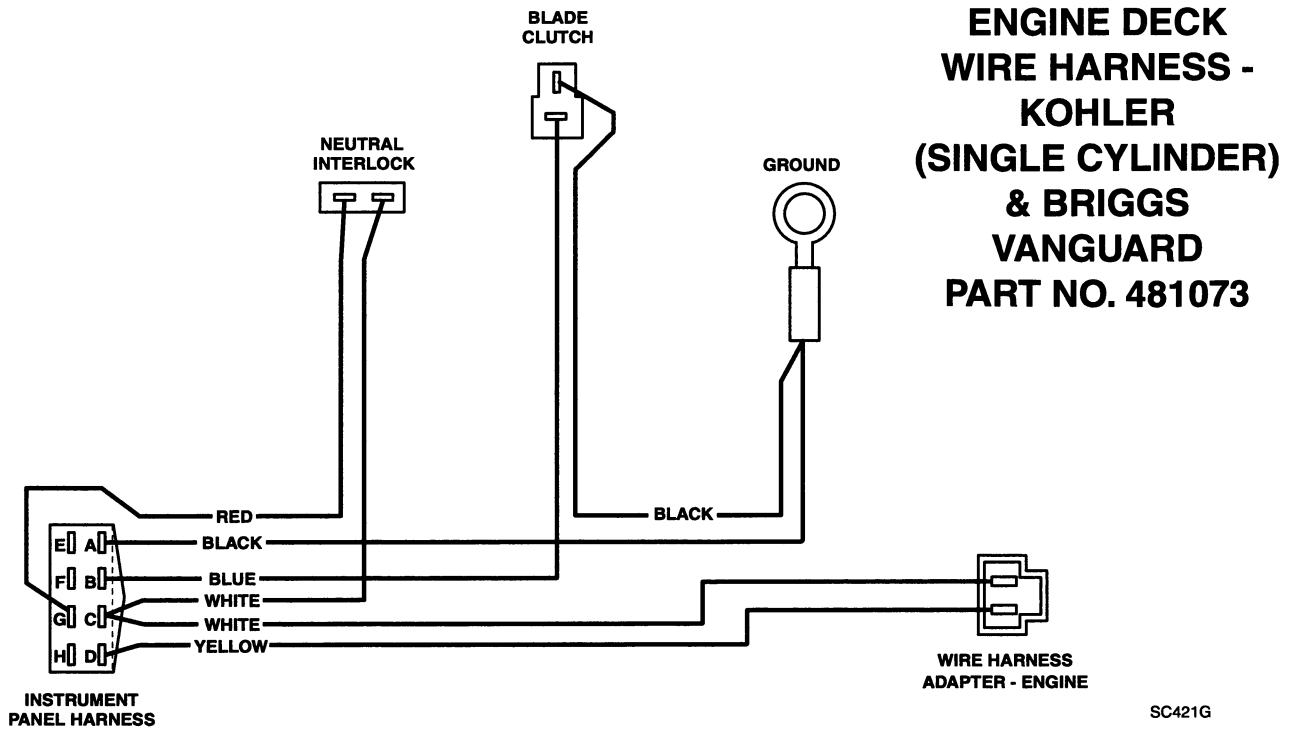
SC419G



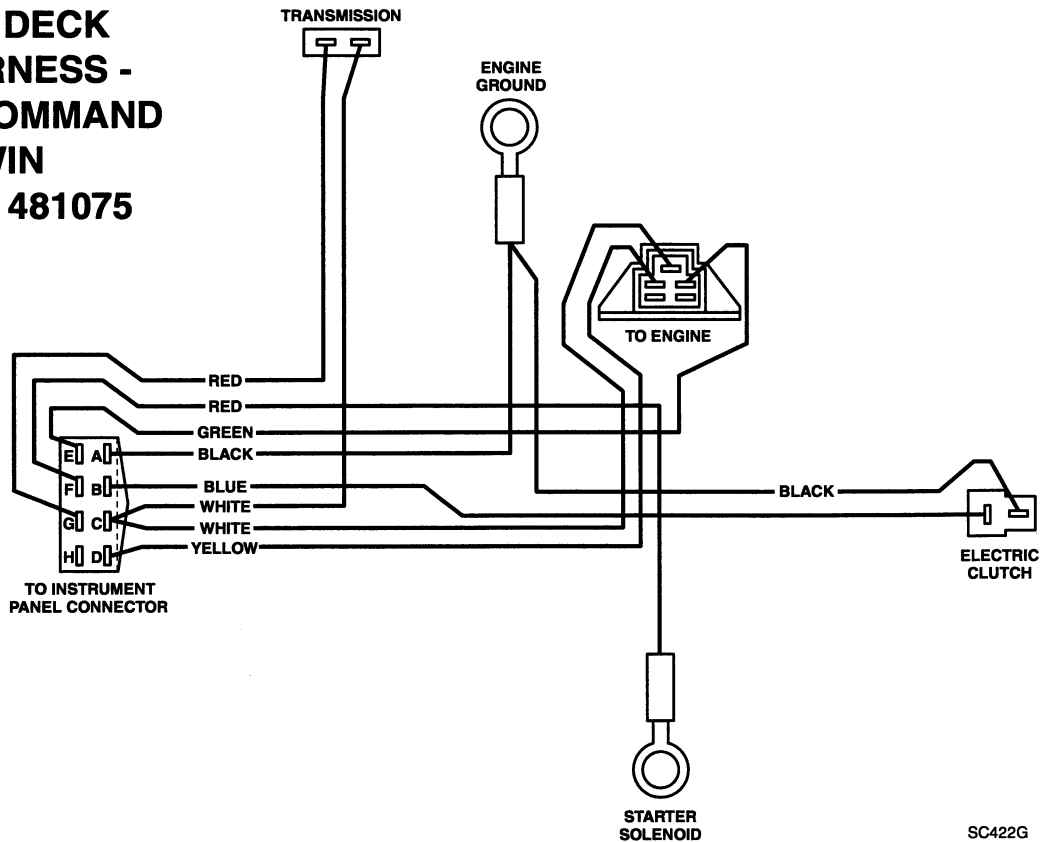
**ENGINE DECK WIRE HARNESS - 16HP-BV ELECTRIC START  
PART NO. 481014**

SC420G





## ENGINE DECK WIRE HARNESS - KOHLER COMMAND V-TWIN PART NO. 481075



**CAUTION**  
BEFORE OPERATING  
READ OPERATORS  
MANUAL AND SAFETY  
INSTRUCTIONS

**SCAG**  
POWER EQUIPMENT

**CAUTION**  
KEEP BYSTANDERS AWAY

MOWER DECK ON  
PULL UP AND  
PUSH FORWARD  
TO ENGAGE

MOWER DECK OFF  
PULL BACK  
TO DISENGAGE

481121

481121

**SCAG**

CHOKE  
FAST  
SLOW

481122

**SCAG**

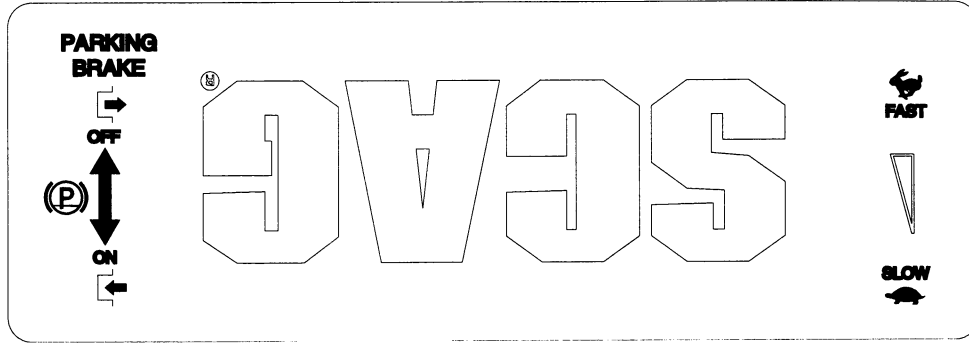
CHOKE  
FAST  
SLOW

481270

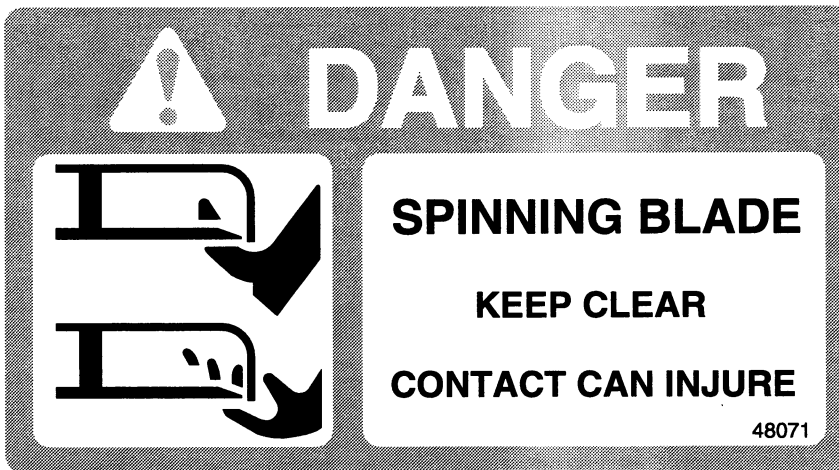
**SCAG**

FAST  
SLOW

481271



481483



48071



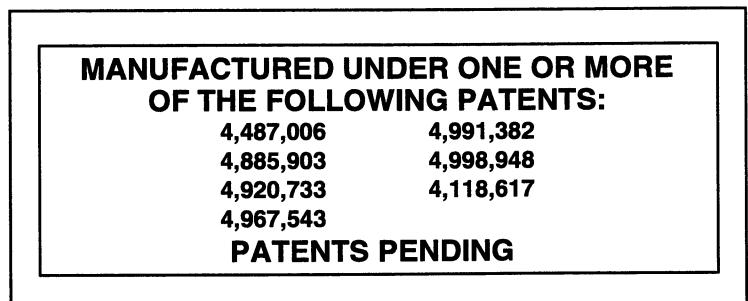
48404




481039



48072



 **WARNING**

**ROTATING BLADES AND BELTS**

- KEEP HANDS, FEET & CLOTHING CLEAR
- KEEP ALL GUARDS IN PLACE
- SHUT OFF ENGINE & DISENGAGE BLADE CLUTCH BEFORE SERVICING
- CLEAR AREA OF DEBRIS BEFORE MOWING
- USE CAUTION IN DIRECTING DISCHARGE
- KEEP BYSTANDERS, CHILDREN & PETS AWAY
- READ INSTRUCTION MANUAL BEFORE OPERATING

**DO NOT OPERATE WITHOUT DISCHARGE CHUTE, MULCHING KIT, OR ENTIRE GRASS CATCHER INSTALLED** 481040

481040

**48**

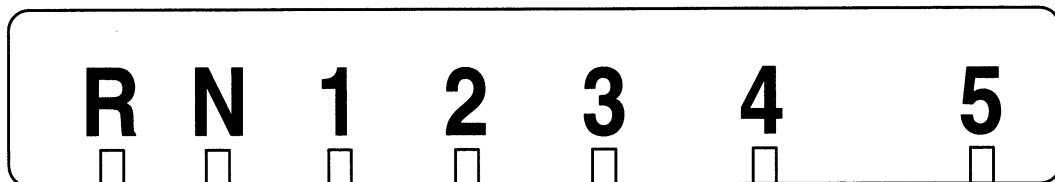
- 32" - 48315
- 36" - 48316
- 48" - 48318
- 52" - 48319
- 61" - 48320
- 72" - 48327

 **WARNING**

**FALLING HAZARD**  
**USE ONLY SCAG APPROVED**  
**RIDING ATTACHMENTS**  
**SEE OPERATOR'S MANUAL** 481109

481109

**R N 1 2 3 4 5**



48332



## **WARNING:**

If incorrectly used, this machine can cause severe injury. Those who use and maintain the machine should be trained in its proper use, warned of its dangers, and should read the entire manual before attempting to set up, operate, adjust or service the machine.

## **LIMITED WARRANTY-COMMERCIAL EQUIPMENT**

Any part of the Scag commercial mower manufactured by Scag Power Equipment and found, in the reasonable judgment of Scag, to be defective in materials or workmanship, will be repaired or replaced by an Authorized Scag Service Dealer without charge for parts and labor. This warranty is limited to the original purchaser and is not transferable. Proof of purchase will be required by the dealer to substantiate any warranty claims. All warranty work must be performed by an Authorized Scag Service Dealer.

This warranty is limited to the following specified periods from the date of the original retail purchase for defects in materials or workmanship:

- \* Wear items including drive belts, blades, hoses and tires are warranted for 90 days.
- \* Batteries are covered for 90 days.
- \* Frame, deck, and structural components including oil reservoir, fittings, and oil cooler are warranted for 1 year.
- \* Engines and electric starters are covered by the manufacturer's warranty period.
- \* Drive system components are warranted for 1 year by the component manufacturer, in conjunction with Scag Power Equipment. (Excluding fittings, hoses, cooling system, oil reservoir, drive belts).
- \* Electric clutch components are warranted for 1 year.

Any Scag product used for rental purposes is covered by a 90 day warranty.

The Scag mower, including any defective part must be returned to an Authorized Scag Service Dealer within the warranty period. The expense of delivering the mower to the dealer for warranty work and the expense of returning it to the owner after repair will be paid for by the owner. Scag's responsibility is limited to making the required repairs and no claim of breach of warranty shall be cause for cancellation or rescission of the contract of sale of any Scag mower.

This warranty does not cover any mower that has been subject to misuse, neglect, negligence, or accident, or that has been operated in any way contrary to the operating instructions as specified in the Operator's Manual. The warranty does not apply to any damage to the mower that is the result of improper maintenance, or to any mower or parts that have not been assembled or installed as specified in the Operator's Manual and Assembly Manual. The warranty does not cover any mower that has been altered or modified, changing performance or durability. In addition, the warranty does not extend to repairs made necessary by normal wear, or by the use of parts or accessories which, in the reasonable judgment of Scag, are either incompatible with the Scag mower or adversely affect its operation, performance or durability.

Scag Power Equipment reserves the right to change or improve the design of any mower without assuming any obligation to modify any mower previously manufactured.

All other implied warranties are limited in duration to the one (1) year warranty period or ninety (90) days for mowers used for rental purpose. Accordingly, any such implied warranties including merchantability, fitness for a particular purpose, or otherwise, are disclaimed in their entirety after the expiration of the appropriate one year or ninety day warranty period. Scag's obligation under this warranty is strictly and exclusively limited to the repair or replacement of defective parts and Scag does not assume or authorize anyone to assume for them any other obligation. Some states do not allow limitations on how long an implied warranty lasts, so the above limitation may not apply to you.

Scag assumes no responsibility for incidental, consequential or other damages including, but not limited to, expense for gasoline, expense of delivering the mower to an Authorized Scag Service Dealer and expense of returning it to the owner, mechanic's travel time, telephone or telegram charges, rental of a like product during the time warranty repairs are being performed, travel, loss or damage to personal property, loss of revenue, loss of use of the mower, loss of time or inconvenience. Some states do not allow the exclusion or limitation of incidental or consequential damages, so the above limitation or exclusion may not apply to you.

This warranty gives you specific legal rights, and you may also have other rights which vary from state to state.

© 1996  
SCAG POWER EQUIPMENT  
DIVISION OF METALCRAFT OF MAYVILLE, INC.

PART NO. 03030  
PRINTED 7/96  
PRINTED IN USA