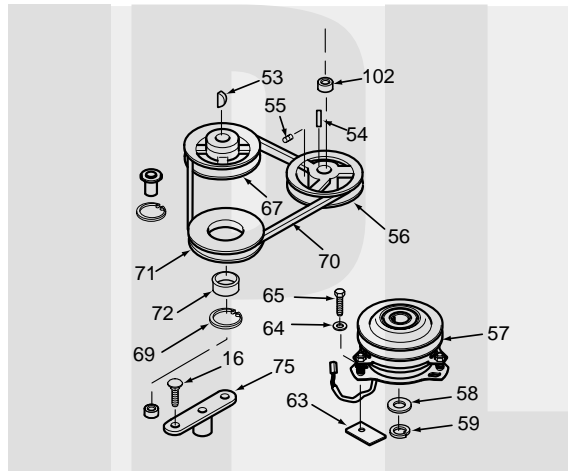


# SCAG<sup>®</sup>

## POWER EQUIPMENT



# MODEL SWZ

## ILLUSTRATED PARTS LIST

**THIS MANUAL CONTAINS THE ILLUSTRATED PARTS LIST FOR MODELS:**

---

<b>SWZ36A-14KA</b>	<b>with a serial number of 6230001 to 6239999</b>
<b>SWZ36A-15KA</b>	<b>with a serial number of 7190001 to 7199999</b>
<b>SWZ48A-17KA</b>	<b>with a serial number of 6260001 to 6269999</b>
<b>SWZ52A-17KA</b>	<b>with a serial number of 6280001 to 6289999</b>
<b>SWZ-17KA</b>	<b>with a serial number of 6290001 to 6299999</b>
<b>SWZ-21KAE</b>	<b>with a serial number of 6300001 to 6309999</b>
<b>SWM-72/E</b>	<b>with a serial number of 5240001 to 5249999</b>
<b>SWM-52A</b>	<b>with a serial number of 6320001 to 6329999</b>

# NOTES

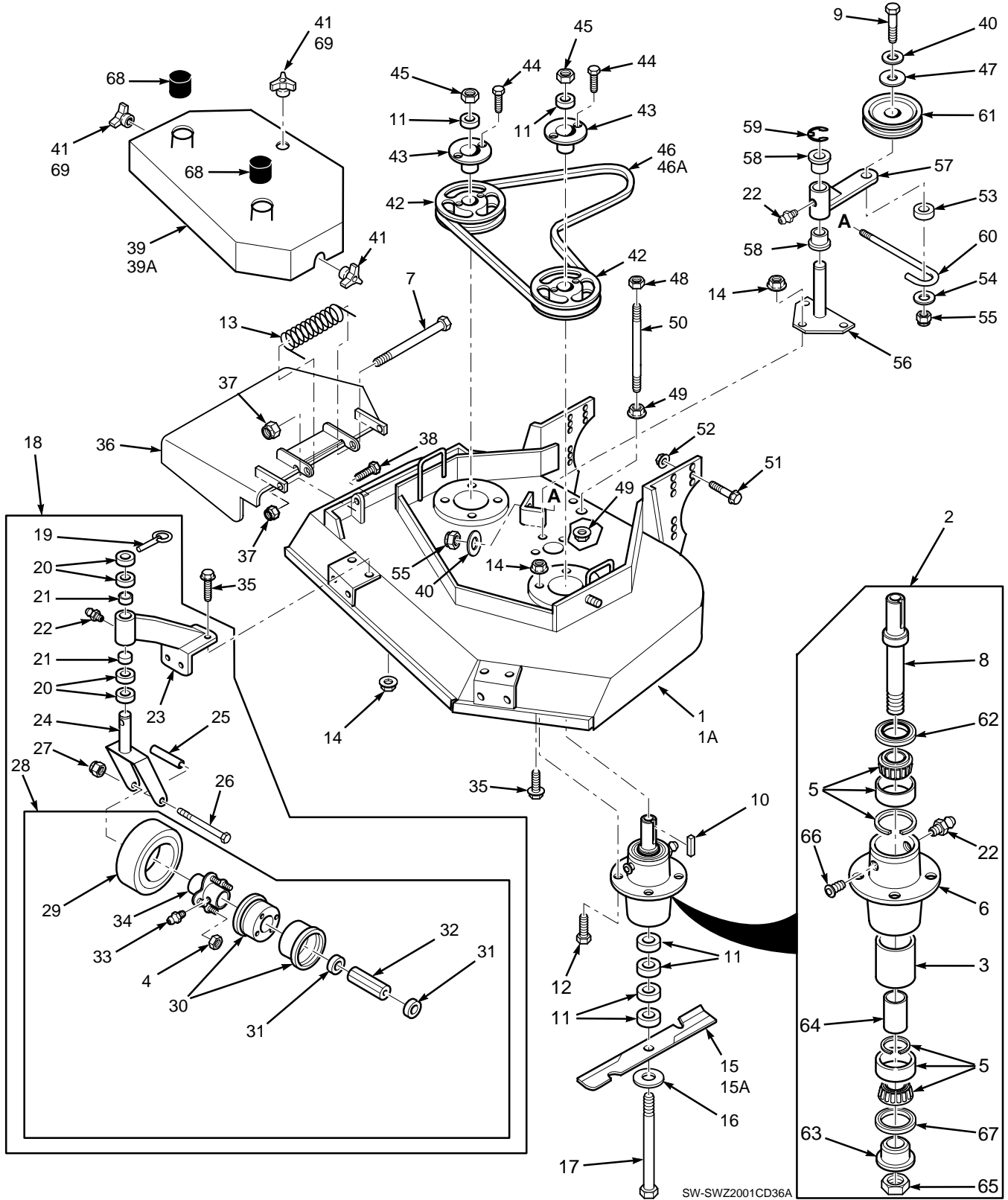
# **SCAG**

## **POWER EQUIPMENT**

### **ILLUSTRATED PARTS LIST TABLE OF CONTENTS**

<b>SUBJECT</b>	<b>PAGE</b>
<b>Illustrated Parts List</b>	
SWM-36A" Cutter Deck .....	2-3
SWM-48A", 52A", 61A", 72" Cutter Decks.....	4-5
Engine Deck.....	6-7
Drive And Brake Components.....	8-9
Handle Assembly.....	10-11
Hydraulic Assembly .....	12-13
Hydraulic Pump Assembly .....	14-15
Engine Deck Wire Harness-Kohler (Single Cyl.) & 17KA.....	16
Engine Deck Wire Harness- Kohler Command V-Twin .....	16
Handle Wire Harness-Electric Start.....	17
Wire Harness W/Relay.....	17
Engine Deck Wire Harness-14 Kawasaki.....	18
Handle Wire Harness-Manual Start.....	18
Handle Wire Harness-Kawasaki Electric Start .....	19
Engine Deck Wire Harness-Kawasaki Electric Start.....	19
Replacement Decals.....	20-22

## 36A" CUTTER DECKS



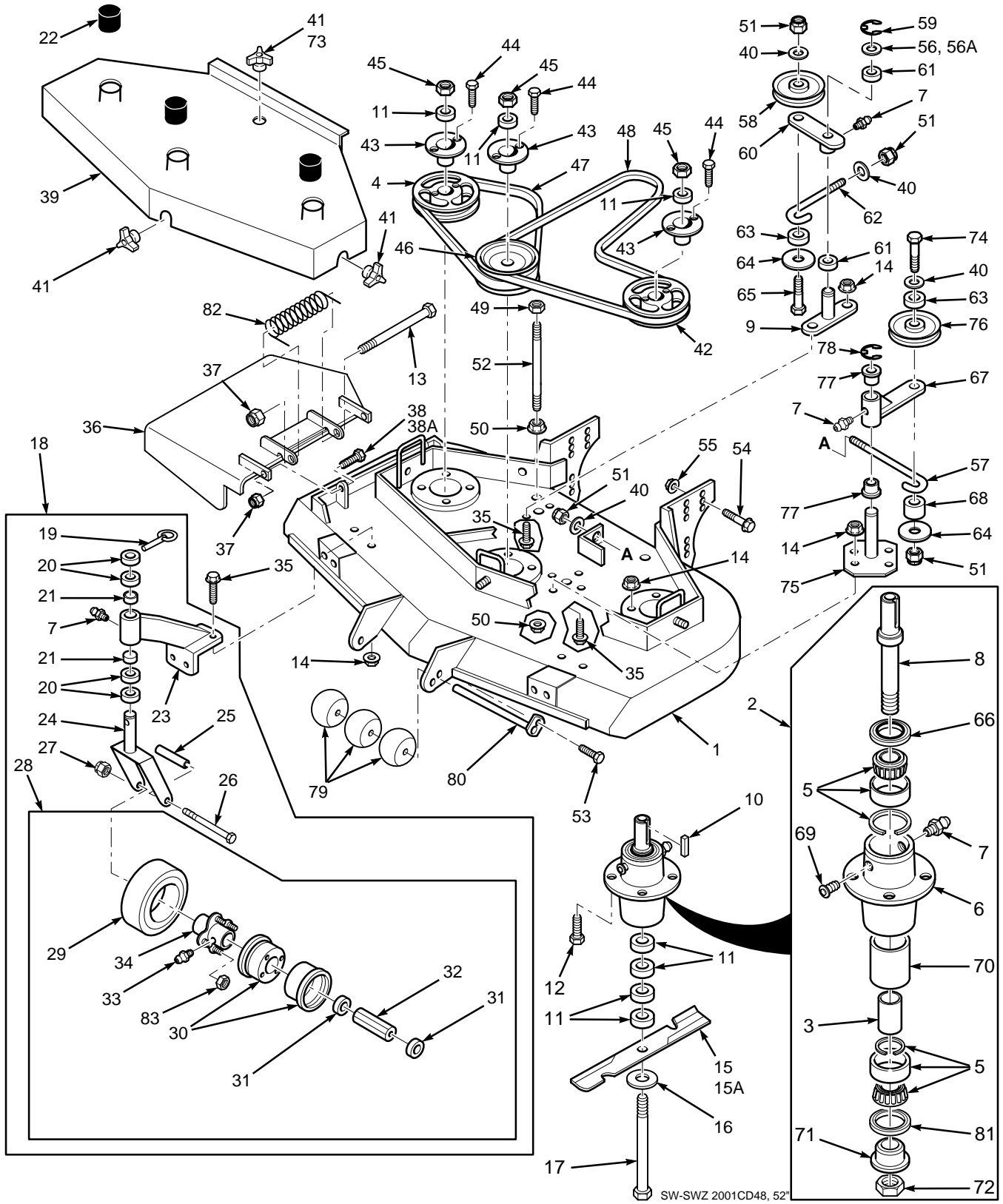
SW-SWZ2001CD36A

## 36A" CUTTER DECKS

Ref. Part No. Number	Description	Ref. Part No. Number	Description		
1	461362	Cutter Deck (Includes Decals)	43	48926	Tapered Hub
1A	461412	Cutter Deck for SWZ36A-15KA (Includes Decals)	44	04001-01	Hex Hd. Bolt, 1/4-20 x 3/4"
2	46631	Cutter Spindle Assy.	45	04020-09	Hex Nut, 5/8-11
3	43312	Spacer, Outside	46	48204	Belt, Blade Drive
4	48307-08	Tapered Nut, 5/16-24	47	43077	Spacer
5	481022	Tapered Bearing (Two)	48	04021-05	Hex Nut, 3/8-16 Center Locknut
6	43294	Spindle Housing	49	04019-04	Nut, 3/8-16 Serrated Flange
7	04001-108	Bolt, 5/16-18 x 4-1/4" Hex Head	50	04004-02	Support, Belt Cover
8	43298	Spindle Shaft	51	04017-42	Cpsscrw, 7/16-14 x 1" Ser.Flg. HH
9	04001-77	Bolt, 3/8-16 x 3-1/2" Hex Head	52	04019-05	Nut, 7/16-14 Serrated Flange
10	04063-08	Key, 1/4 x 1/4 x 2"	53	43277	Spacer, J-Hook
11	43278	Spacer, Cutter Blade - Small	54	04041-12	Washer, 3/8 x 1-1/2 x 16 GA
12	04001-10	Bolt, 5/16-18 x 1-1/4" Hex Head	55	04021-09	Elastic Stop Nut, 3/8-16
13	482245	Spring, Chutte Return	56	45423	Idler Pivot
14	04019-03	Nut 5/16-18 Serrated Flange	57	46748	Idler Arm Assy. (Inc. 22 & 58)
15	481707	Cutter Blade, 18"	58	48100-02	Bronze Bearing
15A	481711	Cutter Blade, 18 Hi Lift	59	04050-05	Retaining Ring, 1-1/8" Ext. "E"
16	04040-10	Flatwasher, 5/8 W	60	44078	J-Hook
17	04001-41	Hex Hd. Bolt, 5/8-11 x 9-1/2"	61	48269	Idler Pulley, Belt Clutch
18	46079	Caster Assembly (Inc.19-28)	62	481024	Seal, Cutter Spindle
19	04066-01	Quick Pin	63	43297	Spindle Bushing
20	43037-01	Spacer, Caster Yoke, 1/2" long	64	43296	Spacer, Inside
21	48100-01	Bronze Bearing	65	481035	Nut, 1-1/16 - 18 Thread
22	48114-04	Grease Fitting	66	48677	Relief Fitting, Cutter Spindle
23	46082	Support Assembly (Inc. 21-23)	67	481025	Seal, Cutter Spindle
24	45006	Caster Yoke	68	48098	Spindle Shield
25	43022	Sleeve, Caster Wheel Bearing	69	04029-04	Wing Nut, 3/8-16 (Small) Top Side
26	04001-37	Hex Hd. Bolt, 1/2-13 x 5-1/2"	69	04029-04	Wing Nut, 3/8-16 (Small) RH Side
27	04021-07	Elastic Stop Nut, 1/2-13			
28	48307	Wheel Assy. (Inc.4, 29-34)			
29	48307-02	Tire only, Caster Wheel			
NS	48006-03	Inner Tube only			
30	48307-04	Rim Pair, Caster Wheel			
31	48006-07	Retainer, Bearing, Caster Wheel			
32	48006-06	Roller Bearing, Caster Wheel			
33	48114-03	Grease Fitting, 45 degree 1/4-28			
34	48006-05	Hub Assembly			
35	04017-16	Cpsscrw, 5/16-18 x 3/4" Ser.Flg. Hex Head			
36	461295	Discharge Chute			
37	04021-10	Hex Nut, 5/16-18 Elastic Stop			
38	04001-09	Hex Hd Bolt, 5/16-18 x 1"			
39	46797	Belt Cover Assy (Includes Decal)			
39A	461413	Belt Cover Assembly w/decals (SWZ36A-15KA)			
40	04041-07	Flat Washer, 3/8" Special			
41	04029-03	Wing Nut, 3/8-16			
42	48924	Pulley			

\* Common hardware which should be purchased locally. All bolts are Grade 5 plated, all other fasteners zinc plated.

## 48A, 52A, 61A, & 72" CUTTER DECKS

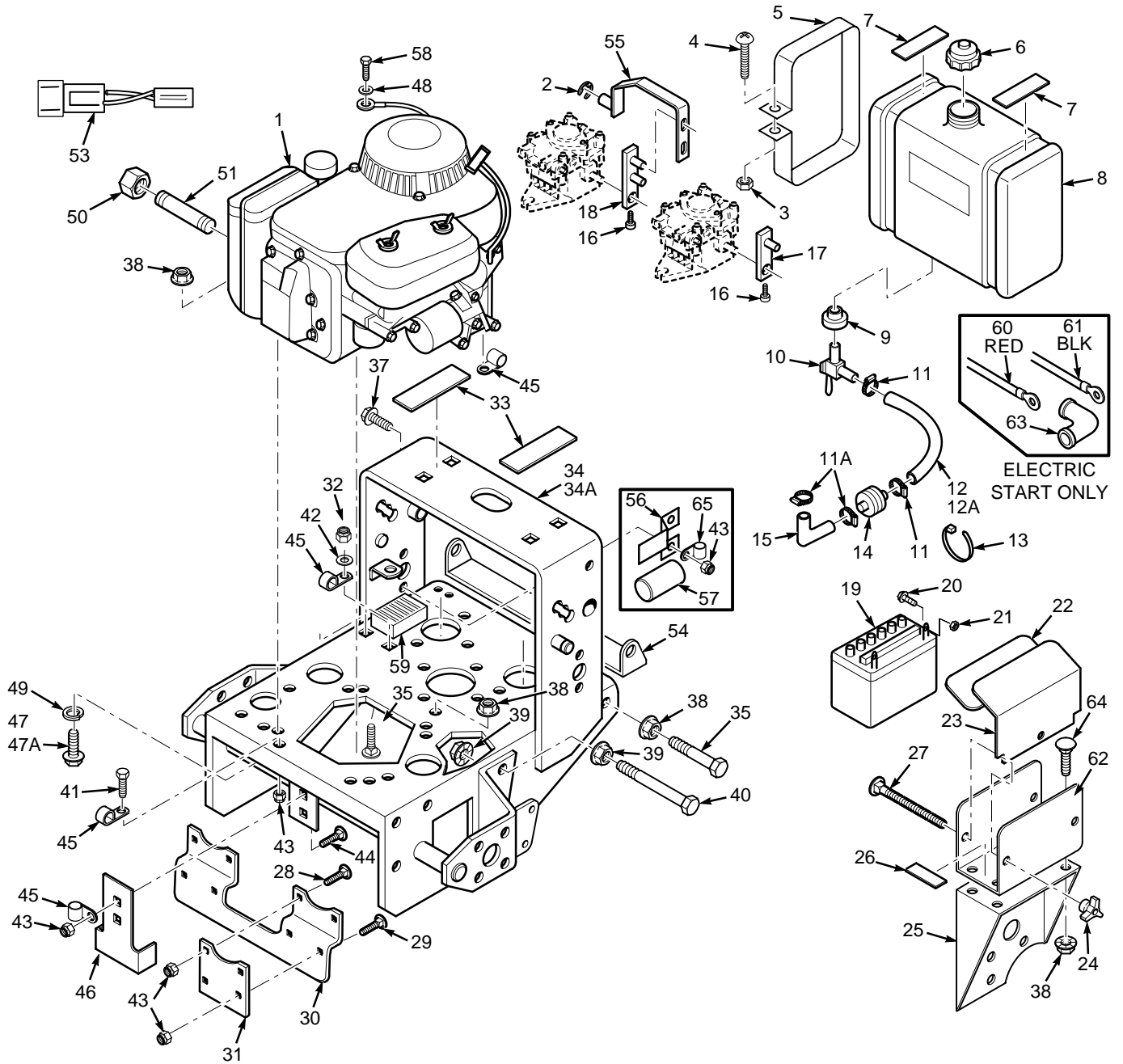


## 48A, 52A, 61A, & 72" CUTTER DECKS

Ref. Part No. No.	Description	48	52	61	72	Ref. Part No. No.	Description	48	52	61	72		
1	461367	Cutter Deck Adv. (Inc. decals)	x				43	48926	Tapered Hub	x	x	x	x
*1	461372	Cutter Deck Adv. (Inc. decals)		x			44	04001-01	Bolt, 1/4-20 x 3/4" Hex Head	x	x	x	x
*1	461374	Cutter Deck Adv. (Inc. Decals)		x			45	04020-09	Nut, 5/8-11 Hex	x	x	x	x
1	461379	Cutter Deck Adv. (Includes decals)			x		46	48923	Pulley, Double	x	x		
1	461142	Cutter Deck (Includes decals)				x	46A	48940	Pulley, Double			x	
2	46631	Spindle Assembly	x	x	x	x	46B	48966	Pulley, Double				x
3	43296	Spacer, Inside	x	x	x	x	47	48087	Belt, RH Blade Drive	x			
4	48924	Pulley	x	x	x	x	47	48285	Belt, RH Blade Drive		x		
5	481022	Tapered Bearing (Two)	x	x	x	x	47	48265	Belt, RH Blade Drive			x	
6	43294	Spindle Housing	x	x	x	x	47	48295	Belt, RH Blade Drive				x
7	48114-04	Grease Fitting Str. 5/16	x	x	x	x	48	48089	Belt, Blade Drive	x			
8	43298	Spindle Shaft, Tapered Brng	x	x	x	x	48	48286	Belt, Blade Drive		x		
9	45037	Idler Pivot	x	x	x	x	48	48088	Belt, Blade Drive			x	
10	04063-08	Key, 1/4 x 1/4 x 2"	x	x	x	x	48	48296	Belt, Blade Drive				x
11	43278	Spacer, Cutter Blade - Small	x	x	x	x	49	04021-05	Nut, 3/8-16, Nut Centerlock	x	x	x	x
12	04001-10	Bolt, 5/16-18 x 1-1/4" Hex Head	x	x	x	x	50	04019-04	Nut, 3/8-16, Serrated Flange	x	x	x	x
13	04001-108	Bolt, 5/16-18 x 4-1/4" Hex Head	x	x	x	x	51	04021-09	Nut, 3/8-16 Elastic Stop	x	x	x	x
14	04019-03	Serrated Flange Nut, 5/16-18	x	x	x	x	52	04004-02	Support, Belt Cover	x	x	x	x
15	481706	Cutter Blade 16-1/2"	x				53	04001-08	Bolt, 5/16-18 x 1/2" Hex Head	x	x	x	x
15	481707	Cutter Blade 18"		x			54	04017-42	Cpscrw,7/16-14 x 1"Ser Fling H Hd	x	x	x	x
15	481708	Cutter Blade 21"			x		55	04019-05	Nut, 7/16-14 Serrated Flange	x	x	x	x
15	481709	Cutter Blade 24"				x	56	04041-08	Flat Washer 3/4" Special	x	x	x	x
15A	481710	Cutter Blade 16-1/2 Hi Lift	x				56A	04041-08S	Flat Washer 3/4" Special	x	x	x	x
15A	481711	Cutter Blade 18 Hi Lift		x			57	44078	J-Hook	x	x	x	x
15A	481712	Cutter Blade 21 Hi Lift			x		58	48181	Idler Pulley, "V" Groove	x	x	x	x
16	04040-10	Flatwasher,5/8" (.688 x 1.75 x .134)	x	x	x	x	59	04050-02	Retaining Ring, 3/4" Ext."E"	x	x	x	x
17	04001-41	Hex Head Bolt, 5/8-11 x 9-1/2"	x	x	x	x	60	46081	Idler Arm Assy. (Incl. 7 & 61)	x	x	x	x
18	46079	Caster Assembly, (incl.19-28 & 7)	x	x	x	x	61	48100-05	Bronze Bearing	x	x	x	x
19	04066-01	Quick Pin	x	x	x	x	62	43028	J-Rod, Idler Pulley	x	x	x	
20	43037-01	Spacer, Caster Yoke, 1/2" thick	x	x	x	x	62A	44078	J-Rod, Idler Pulley				x
21	48100-01	Bronze Bearing	x	x	x	x	63	43077	Spacer, J-Rod	x	x	x	x
22	48098	Spindle Shield	x	x	x	x	64	04041-12	Washer, 3/8 x 1-1/2 x 16 ga.	x	x	x	x
23	46082	Support Assembly, (incl. 21-23)	x	x	x	x	65	04001-46	Bolt, 3/8-16 x 2-1/4" Hex Head	x	x	x	x
24	45006	Caster Yoke	x	x	x	x	66	481024	Seal, Cutter Spindle	x	x	x	x
25	43022	Sleeve, Caster Wheel Bearing	x	x	x	x	67	46748	Idler Arm Assy (Includes 22&77)	x	x	x	x
26	04001-37	Hex Hd Bolt, 1/2-13 x 5-1/2"	x	x	x	x	68	43277	Spacer, J-Rod	x	x	x	x
27	04021-07	Elastic Stop Nut, 1/2-13	x	x	x	x	69	48677	Reiief Fitting, Cutter Spindle	x	x	x	x
28	48307	Wheel Assy. (incl. 29-34,81)	x	x	x	x	70	43312	Spacer, Outside, Cutter Spindle	x	x	x	x
29	481774	Tire only, Caster Wheel	x	x	x	x	71	43297	Spindle Bushing	x	x	x	x
NS	481773	Inner Tube only, Caster Wheel	x	x	x	x	72	481035	Nut, Cutter Spindle	x	x	x	x
30	481772	Rim Pair, Caster Wheel	x	x	x	x	73	04029-04	Wing Nut, 3/8-16 (Small) Top Side	x	x	x	x
31	481770	Bearing Retainer, Caster Wheel	x	x	x	x	74	04001-77	Bolt, 3/8-16 x 3-1/2" Hex Head	x	x	x	x
32	481769	Roller Bearing, Caster Wheel	x	x	x	x	75	45329	Idler Pivot	x	x	x	x
33	48114-03	Grease Fitting 45 deg., 1/4-28	x	x	x	x	76	48269	Idler Pulley, Belt Clutch	x	x	x	x
34	481768	Hub Assembly, (incl. bolts)	x	x	x	x	77	48100-02	Bronze Bearing	x	x	x	x
35	04017-16	Capscrew, 5/16-18 x 3/4"	x	x	x	x	78	04050-05	Retaining Ring	x	x	x	x
36	461292	Discharge Chute		x	x		79	482295	Guide Roller	x	x	x	x
36A	461295	Discharge Chute	x	x			80	45944	Roller Shaft	x	x	x	x
37	04021-04	Nut, 5/16-18 Elastic Elastic Stop	x	x	x	x	81	481025	Seal, Cutter Spindle	x	x	x	x
38	04001-09	Bolt, 5/16-18 x 1" Hex Head	x	x	x	x	82	482245	Spring, Chute Return	x	x	x	x
39	46798	Belt Cover (Includes decals)	x				83	48307-08	Nut, 3/8-24 Tapered	x	x	x	x
39	461095	Belt Cover (Includes decals) 17KA	x										
39	46804	Belt Cover (Includes decals)		x									
39	46805	Belt Cover (Includes decals)			x								
39	46848	Belt Cover (Includes decals)				x							
40	04041-07	Flat Washer, 3/8" Special	x	x	x	x							
41	04029-03	Wing Nut, 3/8-16 (Large)	x	x	x	x							
42	48924	Pulley	x	x									
42A	48753	Pulley			x								
42B	48967	Pulley				x							

\* Measure the engine deck to determine frame size. 461372 is for small frame (16") & 461374 is for large frame (20")

## ENGINE DECK

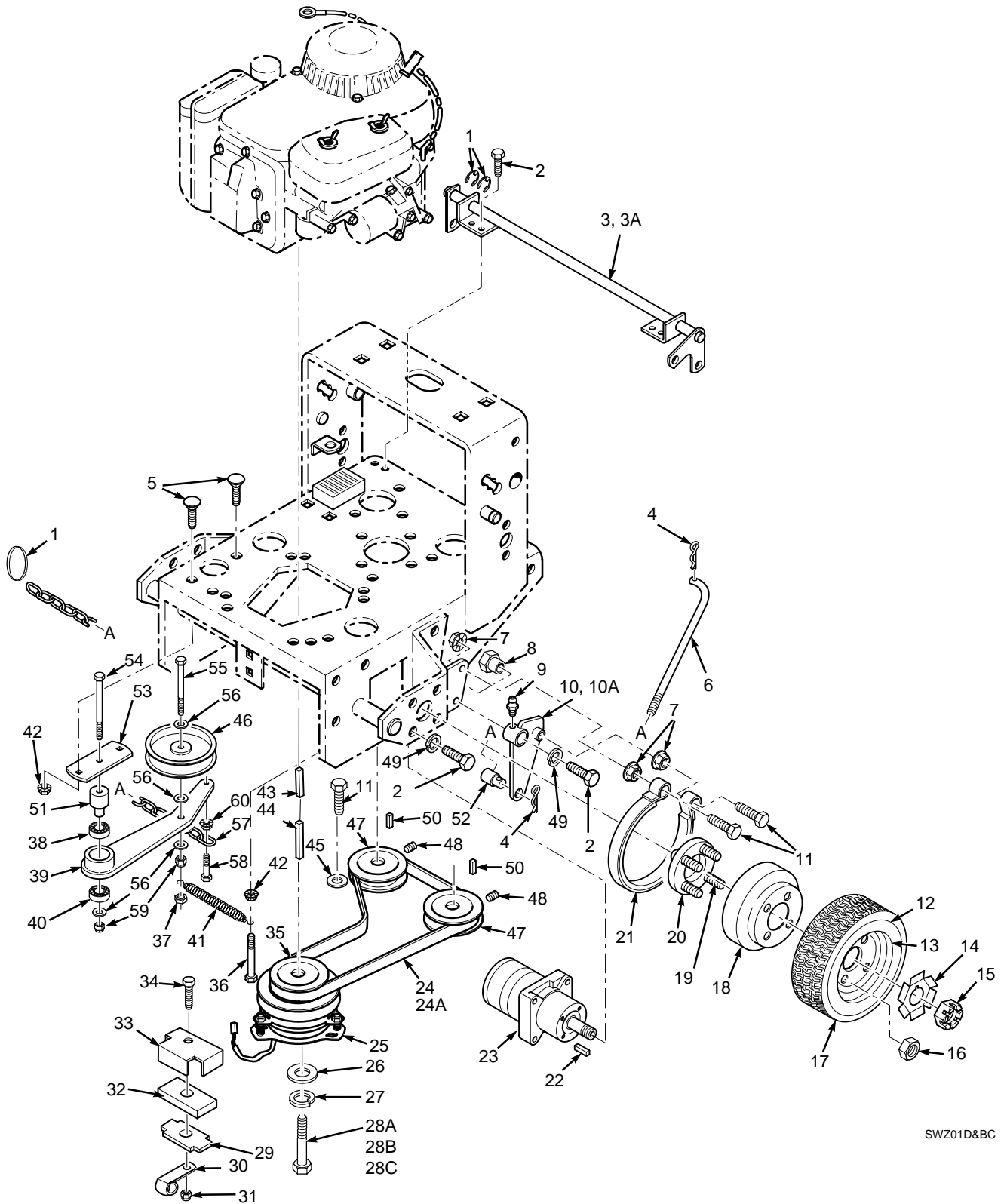




## ENGINE DECK

Ref. No.	Part No.	Description					Ref. No.	Part No.	Description				
			14KA	15KA	17KA	21KAE				14KA	15KA	17KA	21KAE
1	48842	Engine 14KA Kawasaki	x				41	04001-08 Hex Head Bolt, 5/16-18 x .75"	x	x	x	x	
1	482144	Engine 15KA Kawasaki		x			42	04040-14 Flat Washer 1/4"	x	x	x	x	
1	481563	Engine 17KA Kawasaki			x		43	04021-10 Nut, 5/16-18 Elastic Stop	x	x	x	x	
1	48971	Engine 21KAE Kawasaki				x	44	04003-04 Carrage Bolt, 5/16-18 x 1"	x	x	x	x	
2	04050-10	Retaining Ring, 1/2" Ext. "E"	x	x	x	x	45	48030-09 Clamp	x	x	x	x	
3	04020-02	Hex Nut, 1/4-20	x	x	x	x	46	421370 Clutch Bracket	x	x	x	x	
4	04010-10	Screw, 1/4-20 x 2" Rnd. Hd. Phil.	x	x	x	x	47	04017-19 Capscr, 5/16-18 x 1.50" Sr. Flg.				x	
5	421239	Strap, Fuel Tank	x	x	x	x	47A	04002-01 Metric HH Bolt, M8-1.25 x M30	x	x	x		
6	481603	Cap, Fuel Tank	x	x	x	x	48	04031-09 Lock Washer, 5/16 Int. Tooth	x	x	x	x	
7	48292	Pad, Rubber-Fuel Tank - Upper	x	x	x	x	49	04030-03 Lock Washer, 5/16	x	x			
8	46846	Fuel Tank Assy. (incl. 9, 10)	x	x	x	x	50	48257 Pipe Cap				x	
9	48309	Bushing	x	x	x	x	51	48402-04 Pipe, 4.75" Nipple				x	
10	48308	Valve, Fuel Shut-off	x	x	x	x	52	04003-09 Carrage Bolt, 1/4-20 x 1-1/4"	x	x			
11	48059-01	Clamp, Fuel Hose				x	53	481717 Wire Hrns. Adapter, 17KA			x		
11A	48059-02	Clamp, Fuel Hose, (KA Only)	x			x	54	45418 Pulley Guard, 16" Frame	x	x			
12	48058	Fuel Hose, 1/4 ID x 20" KA	x			x	54	45419 Pulley Guard, 20" Frame			x	x	
12A	48058	Fuel Hose, 1/4 ID x 23"				x	55	45283 Shaft Weldment, RH Pump Cntl.	x	x	x	x	
13	48028-05	Cable Tie	x		x	x	56	422930 Bracket, Capacitor	x	x			
14	48057-02	Fuel Filter	x				57	21013-2064 Condenser (order from Kaw.)				x	
15	48179	Fuel Hose, 7/32 ID x 3-1/2"	x				58	04002-07 Metric H H Bolt, 8-1.25 x 10	x	x	x		
16	04015-06	Capscrew, #10-32 x 1 Soc. Hd.	x	x	x		59	21066-2071 Regulator, (order from Kaw.)				x	
17	46323	Lever Assy., Pump Control -LH	x	x	x	x	60	48029-02 Battery Cable, 31.5" Red				x	
18	46324	Lever Assy., Pump Control -RH	x	x	x	x	61	48029-14 Battery Cable, 31.5 Black				x	
19	48015	Battery				x	62	421703 Battery Box				x	
20	04001-44	Bolt, 1/4-20 x .50"				x	63	48126 Rubber Boot				x	
21	04020-02	Nut, 1/4-20				x	64	04003-12 Carrage Bolt, 5/16-18 x .75				x	
22	48099	Pad				x	65	48030-10 Cable Clamp, .75 ID	x	x	x		
23	42392	Battery Cover				x							
24	04029-01	Wing Nut, 1/4-20				x							
25	423356	Battery Support				x							
26	48661	Pad, Rubber				x							
27	04003-01	Bolt, 1/4-20 x 6" Carriage				x							
28	04003-28	Carriage Bolt, 5/16-18 x 2"				x	x						
29	04003-04	Carriage Bolt, 5/16-18 x 1"				x	x						
30	422553	Stiffener				x	x						
31	422552	Plate, Backing				x	x						
32	04021-08	Nut, 1/4-20 Elastic Stop	x	x	x	x							
33	48205	Pad, Rubber-Fuel Tank, Lower	x	x	x	x							
34	461358	Engine Deck, 16" Wide, W/Decls.	x	x	x								
34A	461359	Engine Deck, 20" Wide, W/Decls.				x	x						
35	04003-09	Bolt, 1/4-20 x 1-1/4" Hex Head	x	x	x	x							
36	04019-02	Nut, 1/4-20 Serrated Flange				x	x						
37	04017-18	Capscr., 5/16-18 x 1.25 Sr. Flg.	x	x	x	x							
38	04019-03	Nut, 5/16-18 Serr. Flange	x	x	x	x							
39	04019-04	Nut, 3/8-16 Serr. Flange	x	x	x	x							
40	04001-22	Bolt, 3/8-16 x 2-3/4" Hex Head	x	x	x	x							

## DRIVE AND BRAKE COMPONENTS

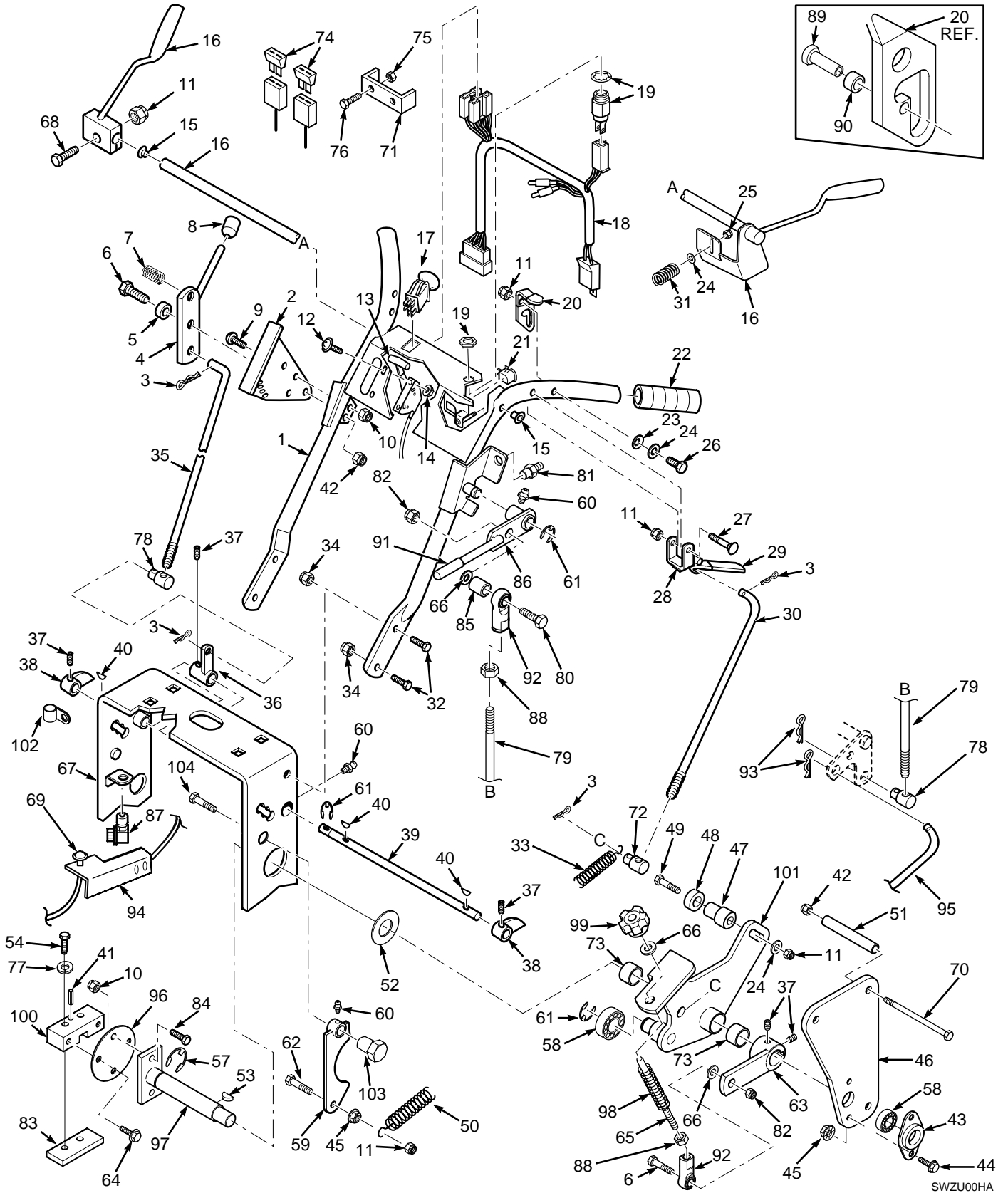


SWZ01D&BC

## DRIVE AND BRAKE COMPONENTS

Ref. Part							Ref. Part						
Ref. No.	Part No.	Description	14KA	15KA	17KA	21KAE	Ref. No.	Part No.	Description	14KA	15KA	17KA	21KAE
1	481876	Ring, Split	x	x	x	x	29	422534	Plate, Backing	x	x	x	x
2	04001-19	Bolt, 3/8-16 x 1" Hex Head	x	x	x	x	30	48030-09	Clamp	x	x	x	x
3	45842	Brake Shaft Assy. Wlmt.Small	x	x	x		31	04021-10	Nut, 5/16-18 Elastic Stop	x	x	x	x
3A	45854	Brake Shaft Assy. Wlmt.Large			x	x	32	481716	Rubber Pad, Clutch Stop	x	x	x	x
4	04062-01	Hair Pin Cotter, .094 x 1.62	x	x	x	x	33	422533	Retainer, Clutch Stop	x	x	x	x
5	04003-12	Carrage Bolt, 5/16-18 x .75"	x	x	x	x	34	04001-12	Hex Head Bolt, 5/16-18 x 1.75"	x	x	x	x
6	44126	Rod, Brake Lower	x	x	x	x	35	481665	Pulley, Pump Drive Engine	x	x	x	x
7	04019-04	Nut, 3/8-16 Serr. Flange	x	x	x	x	36	04001-13	Hex Head Bolt, 5/16-18 x 2.75"	x	x	x	x
8	43415	Bushing, Brake	x	x	x	x	37	04021-05	Nut, 3/8-16 Center Lock	x	x	x	x
9	48114-05	Grease Fitting	x	x	x	x	38	48224	Ball Bearings	x	x	x	x
10	45860	Brake Actuator Wlmt., LH	x	x	x	x	39	451109	Idler Arm Weldment, Pump	x	x	x	x
10A	45861	Brake Actuator Wlmt., RH	x	x	x	x	40	48224	Ball Bearings	x	x	x	x
11	04001-46	Bolt, 3/8-16 x 2-1/4"	x	x	x	x	41	481835	Spring, Pump Belt Idler	x	x	x	x
12	481618	Tire, 16 x 6.50, 4 ply	x	x	x	x	42	04019-03	Nut, 5/16-18 Serr. Flange	x	x	x	x
13	48004-04	Rim Assy	x	x	x	x	43	04063-24	Key, 1/4x1/4x2.75" Clutch Mtg.	x	x	x	x
14	422214	Lock Washer, Wheel Motor	x	x	x	x	44	04063-01	Key, 1/4x1/4x1.25" Pulley Mtg.	x	x	x	x
15	48679	Hex Castle Nut, 3/4-28 UNEF	x	x	x	x	45	04041-07	Flat Washer, 3/8	x	x	x	x
16	04028-01	Nut, Lug	x	x	x	x	46	48473	Pulley, Idler 4.5"	x	x	x	x
17	481502	Wheel Assy., (incl. 31,32)	x	x	x	x	47	48586	Pulley, Pump Shaft	x	x	x	x
18	422215	Brake Drum	x	x	x	x	48	04012-04	Setscrew, 5/16-18 x 3/8"	x	x	x	x
19	04008-01	1/2-20 Serrated Bolt	x	x	x	x	49	04030-04	Lockwasher, 3/8	x	x	x	x
20	46928	Hub, Wheel	x	x	x	x	50	04063-14	Key, 5.0 x 5.0 x 25mm	x	x	x	x
21	481470	Brake Band, 7.5"	x	x	x	x	51	43504	Pivot, Idler (Long)	x	x	x	x
22	04063-07	Key, 3/16 X .75 Woodruff	x	x	x	x	52	43032	Swivel Joint	x	x	x	x
23	481416	Wheel Motor	x	x	x	x	53	422713	Base, Idler Pivot	x	x	x	x
24	48553	Belt, Pump Drive (Sm Frame)	x	x	x		54	04001-54	Bolt, Hex Head 3/8-16 x 3"	x	x	x	x
24A	48587	Belt, Pump Drive (Lg Frame)			x	x	55	04001-22	Bolt, Hex Head 3/8-16 x 2.75"	x	x	x	x
25	461397	Electric Clutch	x	x	x	x	56	04043-04	Flatwasher 3/8"	x	x	x	x
26	04041-28	Flat Washer .469 x 1.75 x .25	x	x	x	x	57	481873	Chain	x	x	x	x
27	04030-05	Lock Washer, 7/16	x	x	x	x	58	04001-59	Bolt, Hex Head 1/4-20 x 1.25"	x	x	x	x
28A	04002-05	Hex Head Bolt, M10-1.5 x 65	x	x			59	04021-09	Nut, Hex Elastic Stop 3/8-16	x	x	x	x
28B	04001-149	Hex Head Bolt, 7/16-20 x 2.00"			x	x	60	04019-02	Nut, Serrated Flange 1/4-20	x	x	x	x

## HANDLE ASSEMBLY



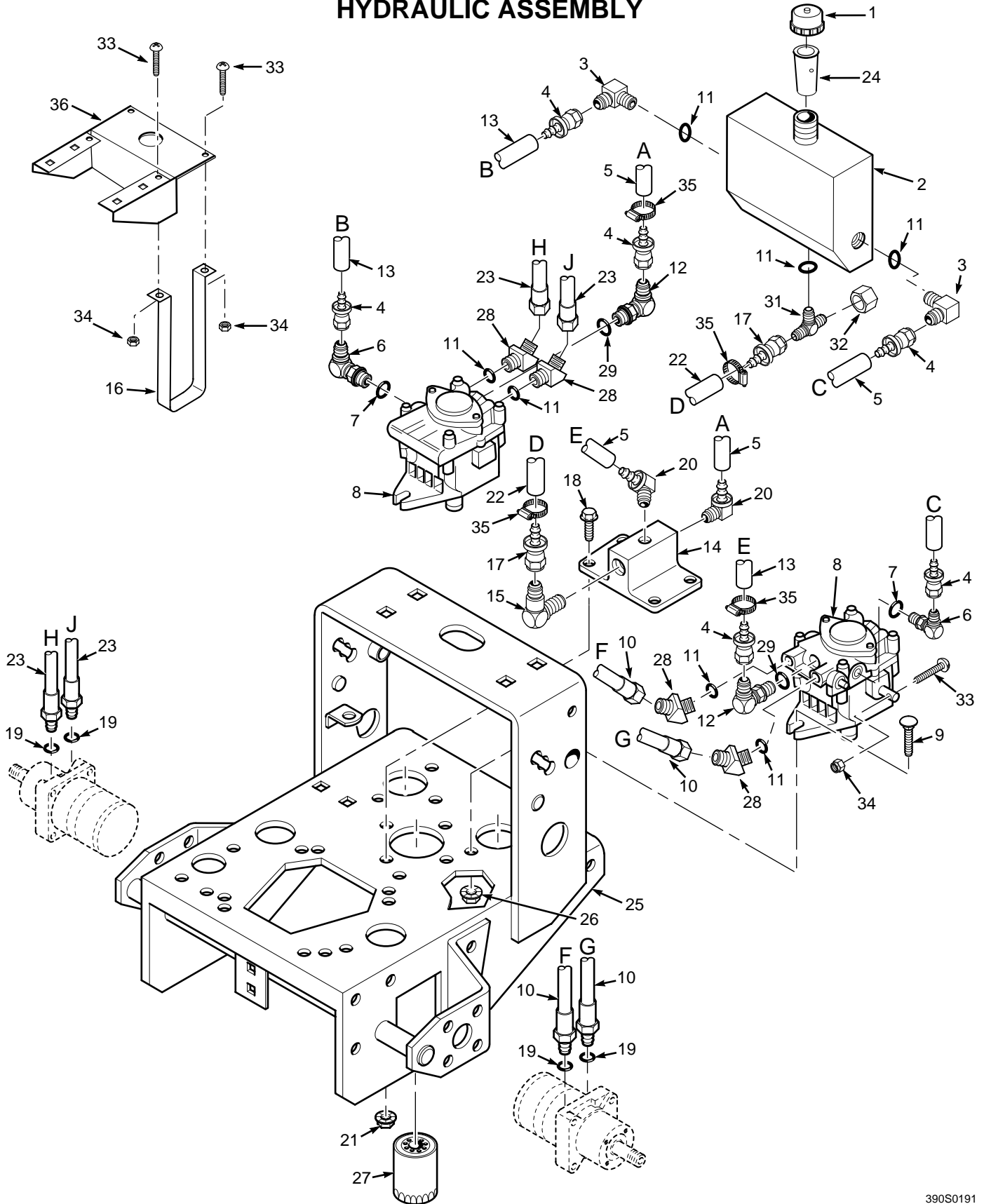
SWZU00HA

## HANDLE ASSEMBLY

Ref. No.	Part No.	Description					Ref. No.	Part No.	Description				
			14KA	15KA	17KA	21KAE				14KA	15KA	17KA	21KAE
1	461128	Upper Handle W/mt. W/Decals	x	x									
1	461129	Upper Handle W/mt. W/Decals			x	x	53	45292	Handle, Neutral Adj	x	x	x	x
2	42675	Quadrant, Speed Control	x	x	x	x	54	04065-05	Drive Pin, 5/32 x 7/8 Type U	x	x	x	x
3	04062-02	Hairpin, .094 x 1.19	x	x	x	x	55	04001-08	HH Bolt,5/16-18 x 3/4"	x	x	x	x
4	45282	Lever, Speed Adjustment	x	x	x	x	56	04030-03	Lock Washer, 5/16	x	x	x	x
5	43086	Bushing, Speed Adjustment Lever	x	x	x	x	57	04019-03	Nut, 5/16-18 Serr. Flange	x	x	x	x
6	04001-20	Hex Head Bolt, 3/8-16 x 1-1/2"	x	x	x	x	58	48224	Bearing, Ball Neutral Return	x	x	x	x
7	48493-01	Ball Plunger	x	x	x	x	59	46747	Cam, Neutral (incl. grease ftng.)	x	x	x	x
8	48092	Knob, Speed Adjustment	x	x	x	x	60	48114-05	Grease Fitting, 1/4-28 UNF	x	x	x	x
9	04014-01	Capscrew, 1/4-20 x 3/4" FHHS	x	x	x	x	61	04050-01	Retaining Ring, 5/8 Ext. "E"	x	x	x	x
10	04021-08	Nut, 1/4-20 Elastic Stop	x	x	x	x	62	04001-09	Hex Head Bolt, 5/16-18 x 1"	x	x	x	x
11	04021-10	Nut, 5/16-18 Elastic Stop	x	x	x	x	63	482146	Lever, Speed Control	x	x	x	x
12	04010-01	Screw, #10-32 x 1/2" PW HD	x	x	x	x	64	45642	Bellcrank, Pump Control-LH	x	x	x	x
13	481071	Throttle Control	x	x			64A	45643	Bellcrank, Pump Control-RH	x	x	x	x
13A	48946	Throttle Control			x	x	65	04050-10	Retaining Ring, 1/2 Ext. "E"	x	x	x	x
14	04019-01	Nut, #10-32 Serr. Flange	x	x	x	x	66	04041-07	Flat Washer,15/16x25/64x12ga	x	x	x	x
15	48312	Bushing	x	x	x	x	67	By Ref.	Deck, Engine	x	x	x	x
16	45572	Handle, Oper. Presence-RH	x	x	x	x	68	04001-10	Hex Head Bolt, 5/16-18 x 1-1/4"	x	x	x	x
16A	45571	Handle, Oper. Presence-LH (20")	x	x	x	x	69	481278	Choke Control	x	x		
16A	45573	Handle, Oper. Presence-LH (16")	x	x			69A	482314	Choke Control			x	x
17	481687	Switch,Elec.Clutch Eng. (incl.Nut)	x	x	x	x	70	481057	Spring, Return	x	x	x	x
18	481680	Wire Harness, Manual Start	x	x	x		71	42413	Fuse Holder	x	x	x	x
18A	481681	Wire Harness, Electric Start				x	72	43306	Swivel Joint, Steering Rod	x	x	x	x
19	48609	Key Switch,Manual Srt.(incl. Hdw)	x	x	x		73	04040-04	Flat Washer(.344 x .688 x .065)	x	x	x	x
19A	48798	Key Switch,Elec. Start (incl. Hdw.)				x	74	48298	Blade Fuse, 20A	x	x	x	x
20	461242	Neutral Latch-RH	x	x	x	x	75	04021-01	Nut, #10-32 Elastic Stop	x	x	x	x
20A	461241	Neutral Latch-LH	x	x	x	x	76	04010-03	Screw, #10-32 x 1-1/2" Phillips	x	x	x	x
21	48717	Switch, Neutral Interlock	x	x	x	x	77	43305	Pin, Neutral Lock	x	x	x	x
22	48159	Grip	x	x	x	x	78	43032	Swivel Joint	x	x	x	x
23	04032-01	Washer, Curved Spring	x	x	x	x	79	44125	Rod, Brake Lever	x	x	x	x
24	04040-15	Flat Washer	x	x	x	x	80	04001-21	Hex Hd. Bolt, 3/8-16 x 1 3/4	x	x	x	x
25	04031-08	Lock Washer,1/4" Int. Tooth	x	x	x	x	81	04015-13	Soc. Hd. Capscrew,#8-32 x 1/2	x	x	x	x
26	04001-17	Hex Head Bolt, 5/16-18 x 2"	x	x	x	x	82	04021-09	Nut, 3/8-16 Elastic Stop	x	x	x	x
27	04001-53	Hex Hd. Bolt, 5/16-18 x 2-1/2"	x	x	x	x	83	04041-23	Washer #8-.170 x .375 x .032	x	x	x	x
28	46744	Lever, Steering Control (incl. 29)	x	x	x	x	84	04050-01	Retaining Ring, 5/8 Ext, "E"	x	x	x	x
29	48492	Grip, Steering Control	x	x	x	x	85	43212	Spacer	x	x	x	x
30	44134	Rod, Steering Control	x	x	x	x	86	46954	Parking Brake Lever with Grip	x	x	x	x
31	48951	Spring, Handle Return	x	x	x	x	87	481476	Switch, Parking Brake	x	x	x	x
32	04017-27	Capscr., 3/8-16 x 1" Ser. Flange	x	x	x	x	88	04020-14	Nut, 3/8-24	x	x	x	x
33	482348	Spring, Traction Control	x	x	x	x	89	481411	Bushing, bearing Retainer	x	x	x	x
34	04019-04	Nut, 3/8-16 Serr. Flange	x	x	x	x	90	481420	Bearing, Neutral Lock	x	x	x	x
35	44051	Rod Speed Control	x	x	x	x	91	48342	Grip, Parking Brake	x	x	x	x
36	45279	Bellcrank, Speed Control	x	x	x	x	92	48464	Ball Joint, RH Thread	x	x	x	x
37	04012-02	Setscrew, 1/4-28 x 1/4"	x	x	x	x	93	04062-01	Hairpin, .094 x 1.62	x	x	x	x
38	46335	Cam, Speed Control (incl. SS)	x	x	x	x	94	421622	Bracket, Choke Mtg. (16" Only)	x	x		
39	43166	Jackshaft, Speed Control	x	x			95	44126	Rod, Lower Brake	x	x	x	x
39A	43155	Jackshaft, Speed Control	x	x	x	x	96	422273	Plate, Coupler	x	x	x	x
40	04063-13	Key, 1/8 x 1/2" Woodruff	x	x	x	x	97	451113	Shaft, Pump Control	x	x	x	x
41	04021-10	Nut, 3/8-16 Elastic Stop	x	x	x	x	98	481879	Spring	x	x	x	x
42	46336	Pivot, Pump Ctrl. (incl.Bshg & Zrk)	x	x	x	x	99	481885-03	Knob, Tracking Adjustment	x	x	x	x
43	48100-04	Bushing, 1/2" ID	x	x	x	x	100	48829	Block, Pump Control	x	x	x	x
44	04017-17	Capscrew, 5/16-18 x 1" Serr. Flg.	x	x	x	x	101	49236	Control, LH (inc. bush. & decal)	x	x	x	x
45	04019-03	Nut, 5/16-18 Serrated Flange	x	x	x	x		49237	Control, RH (inc. bush. & decal)	x	x	x	x
46	42730	Bar, Speed Control	x	x	x	x	102	48030-15	Wire Loom	x	x	x	x
47	43161	Spacer, Speed Ctrl. Bearing	x	x	x	x	103	43415	Bushing	x	x	x	x
48	48409	Bearing, Speed Ctrl. Bellcrank	x	x	x	x	104	04001-20	Bolt, Hex Head 3/8-16 x 1-1/2"	x	x	x	x
49	04001-69	Hex Head Bolt, 5/16-18 x 1-3/4"	x	x	x	x							
50	48494-02	Spring, Return	x	x	x	x							
51	481517-02	Knob, 5/16-18	x	x	x	x							
52	43308	Bushing	x	x	x	x							

\* Common hardware which should be purchased locally. All bolts Grade 5 plated, all other fasteners zinc plated.

## HYDRAULIC ASSEMBLY

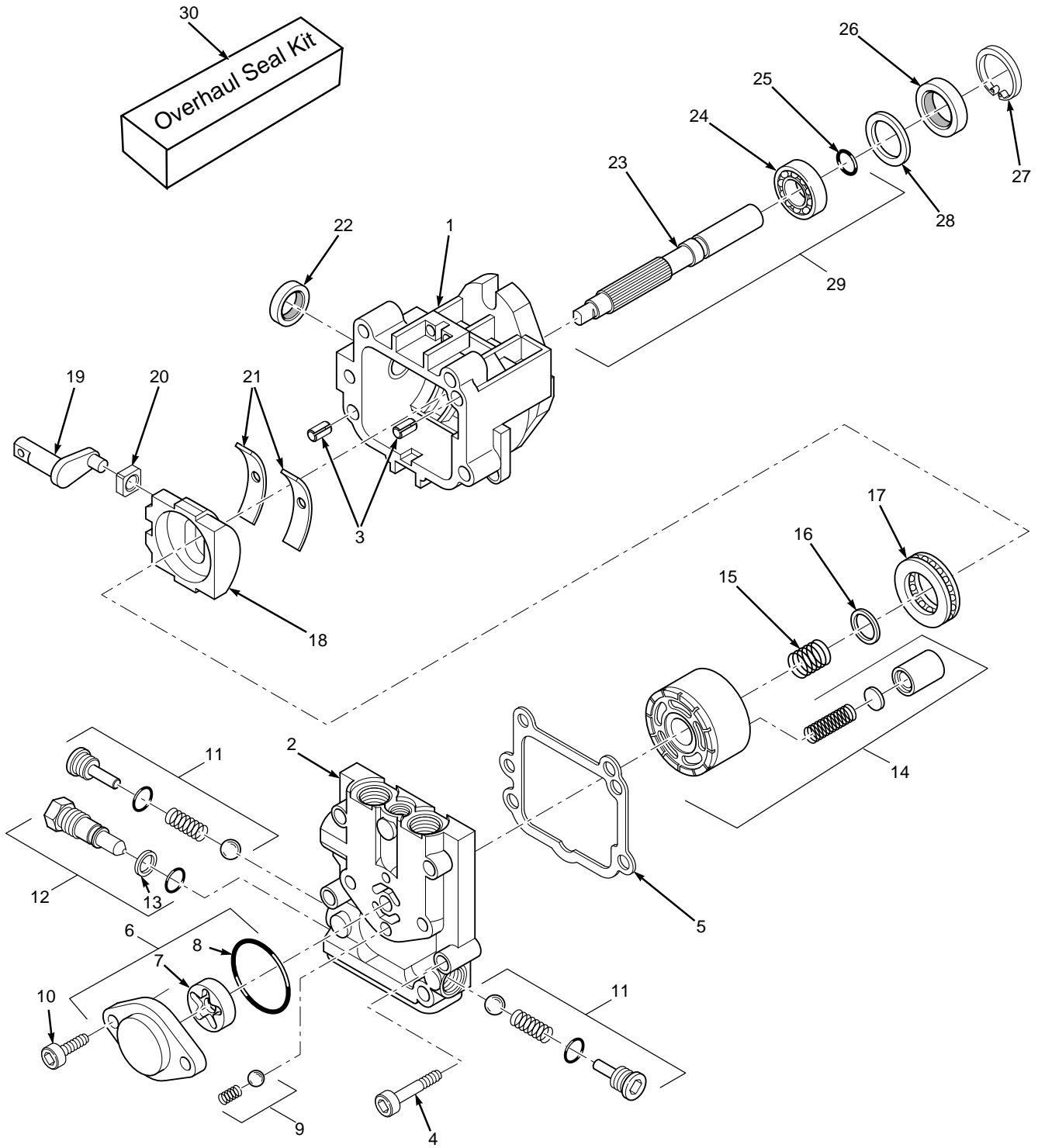


## HYDRAULIC ASSEMBLY

Ref. No.	Part Number	Description
1	481164	Cap, Oil Reservoir
2	461188	Oil Reservoir (With Fittings)
3	48350-04	Elbow, 90 deg. 7/16-20 x 9/16-18
4	48353-02	Coupling, 7/16-20 SAE Flare Swivel to 1/4" Hose Push On
5	48482	Hose, 1/4" ID - 7" Long (Order By The Inch)
6	48350-04	Elbow, 90 deg. 7/16-20 JIC to 9/16-18 "O" Ring
7	48603-06	O-Ring
8	48551	Pump, Hydro-Gear BDP-10L117
9	04003-11	Bolt, Carriage, 3/8-16 x 1.25"
10	481265	Hose, Pump to Wheel Motor
11	48603-02	O-Ring
12	48350-03	Elbow, 90 deg., 1/2 NPT
13	48482	Hose, 1/4" ID - 5" Long (Order By The Inch)
14	48471-02	Oil Filter Base
15	48486-03	Elbow, 90 deg. 1/2" NPT
16	422794	Strap, Hydraulic Tank
17	48936-03	Coupling, 3/4-16 SAE to 1/2" Hose Push On
18	04017-16	Capscrew, 5/16-18 x .75" Serr. Flange
19	48603-04	O-Ring
20	48486-01	Elbow, 90 deg. Male 1/4 NPT to 1/4 Hose Push On
21	04019-03	Nut, 5/16-18 Serr. Flange
22	481875	Hose, Formed 1/2" ID
23	481849	Hose, Pump to Wheel Motor
24	481507	Tube, Filler Neck
25	461358	Engine Deck (16" Wide) W/Decals - Small Frame
	461359	Engine Deck (20" Wide) W/Decals - Large Frame
26	04019-04	Nut, 3/8-16 Serr. Flange
27	48758	Oil Filter
28	48485-01	Elbow, 45 Deg.-3/4-16 JIC Male x Male 3/4-16 O-Ring
29	48603-03	O-Ring
30	481537-02	Coupling, 3/8 Pipe to 1/2 Push-on
31	48810-01	T-Fitting, 1/2 (3/4-16)
32	48571-02	Cap, 3/4-16
33	04010-10	Screw, 1/4-20 x 2.0" Round Head Phillips
34	04021-08	Nut, 1/4-20
35	48136-05	Clamp, .87 max dia.
36	422793	Bracket, Hydraulic Tank

\* Common hardware which should be purchased locally. All bolts are Grade 5 plated, all other fasteners zinc plated.

## HYDRAULIC PUMP ASSEMBLY

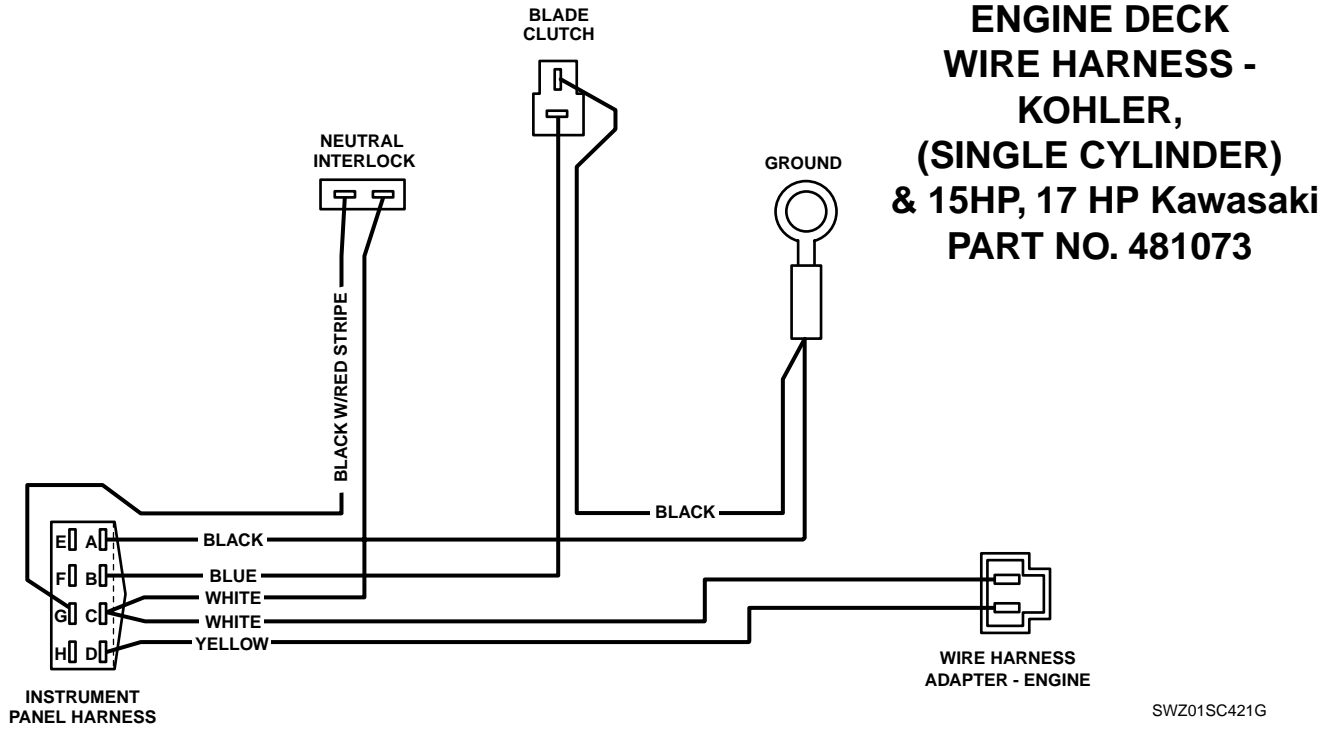




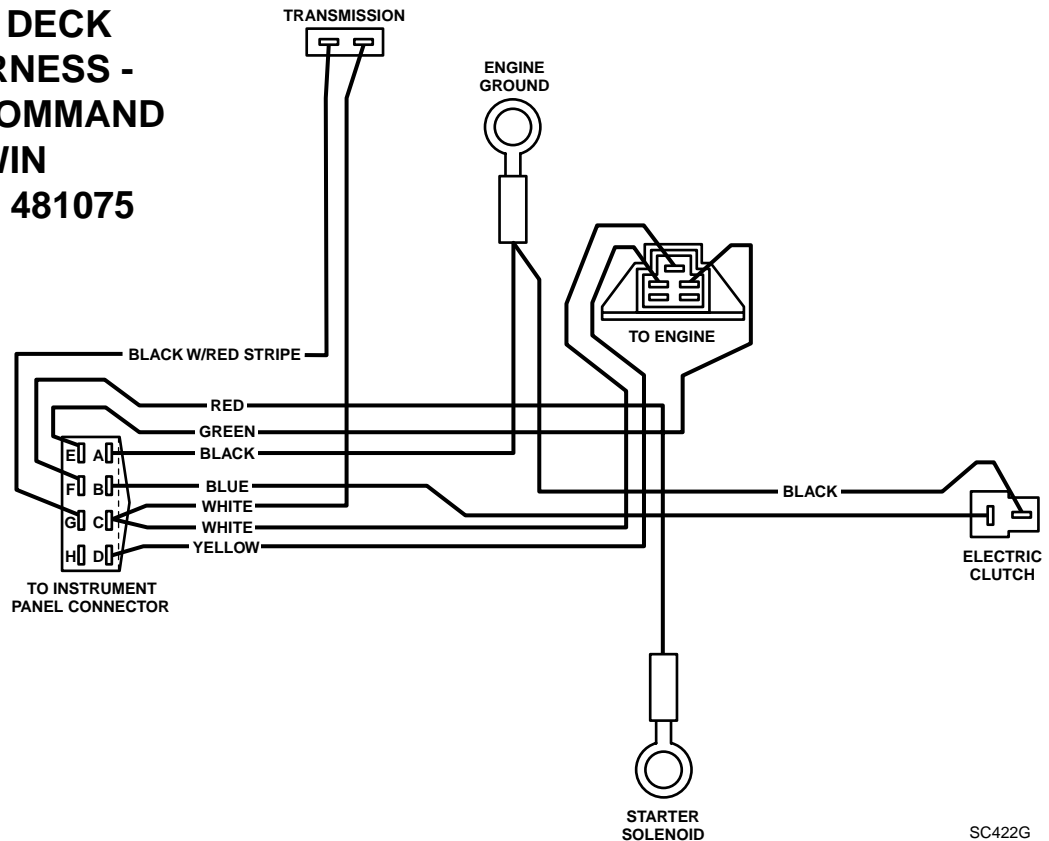
## HYDRAULIC PUMP ASSEMBLY

Ref. No.	Part Number	Description
1	HG 2513017	Housing Kit (Incl. Housing, Journal Bearing)
2	HG 2513016	End Cap
3	HG 9004800-2506	Straight Headless Pin
4	HG 9007314-0810	Socket Head Screw
5	HG 2003067	End Cap Gasket
6	HG 2513027	Charge Pump Kit (Incl. Charge Cover, Gerotor Assy., O-Ring)
7	HG 50273	Gerotor Assembly
8	HG 9004101-1340	O-Ring
9	HG 2510064	Charge Relief Valve Kit
10	HG 50095	Socket Head Screw
11	HG 2510027	Check Valve Kit (Incl. Check Plug, Spring, O-Ring, Orifice Check Valve)
12	HG 2513030	Bypass Valve Kit (Incl. Bypass Valve, O-Ring, Back-up Ring)
13	HG 9006110-0120	Backup Ring
14	HG 70079	Cylinder Block Kit
15	HG 2003014	Block Spring
16	HG 2003017	Block Thrust Washer
17	HG 2003044	Roller Thrust Bearing
18	HG 2003087	Swash Plate
19	HG 2003005	Trunnion Arm
20	HG 2000015	Guide Slot
21	HG 2003023	Cradle Bearing
22	HG 9008000-0126	Lip Seal
23	HG 2003020	Pump Shaft
24	HG 2003043	Ball Bearing
25	HG 2003016	Retaining Ring
26	HG 9008000-0128	Lip Seal
27	HG 2003052	Retaining Ring
28	HG 2003018	Spacer
29	HG 2513038	Shaft Kit (Incl. Pump Shaft, Ball Bearing, Retaining Ring)
30	HG 2513018	Overhaul Seal Kit (Incl. Gasket, Trunnion Seal, Input Shaft Seal, Charge Pump O-Ring)

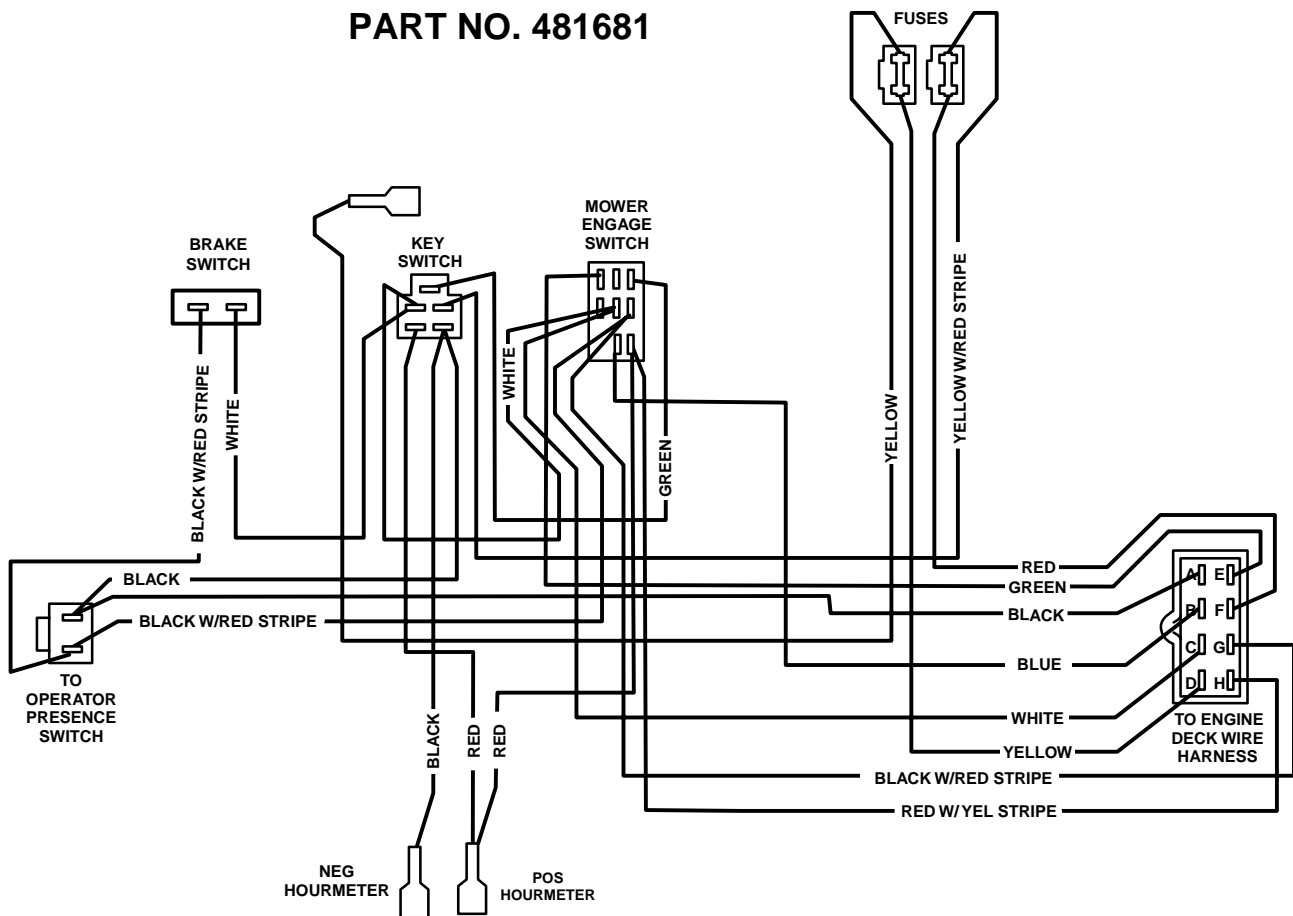
\* Common hardware which should be purchased locally. All bolts Grade 5 plated, all other fasteners zinc plated.



## ENGINE DECK WIRE HARNESS - KOHLER COMMAND V-TWIN PART NO. 481075

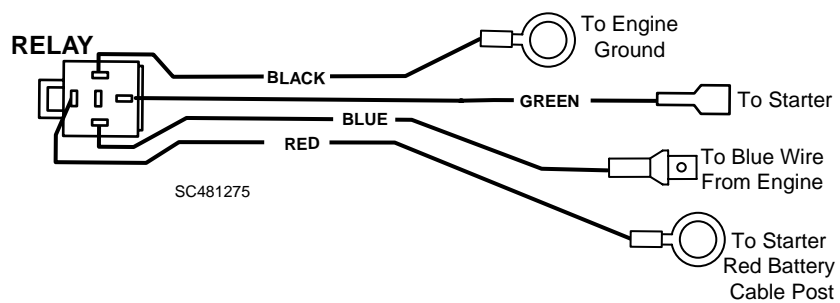


## HANDLE WIRE HARNESS - ELECTRIC START PART NO. 481681



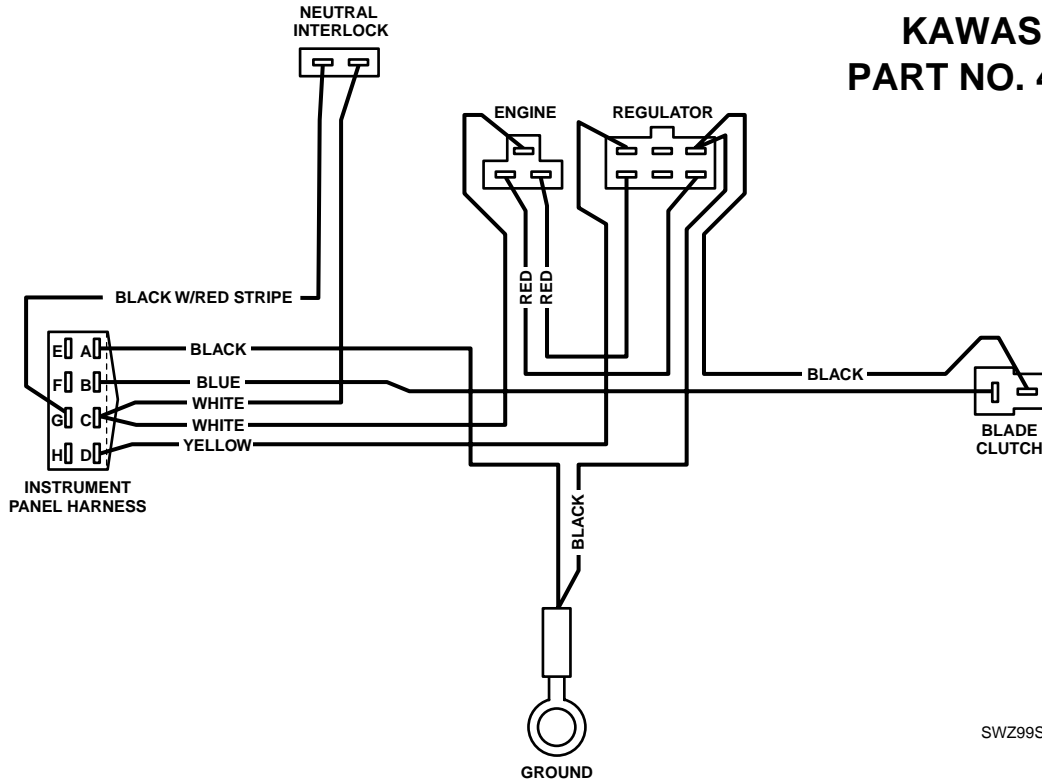
SWZ99-481681

## WIRE HARNESS WITH RELAY PART NO. 481275

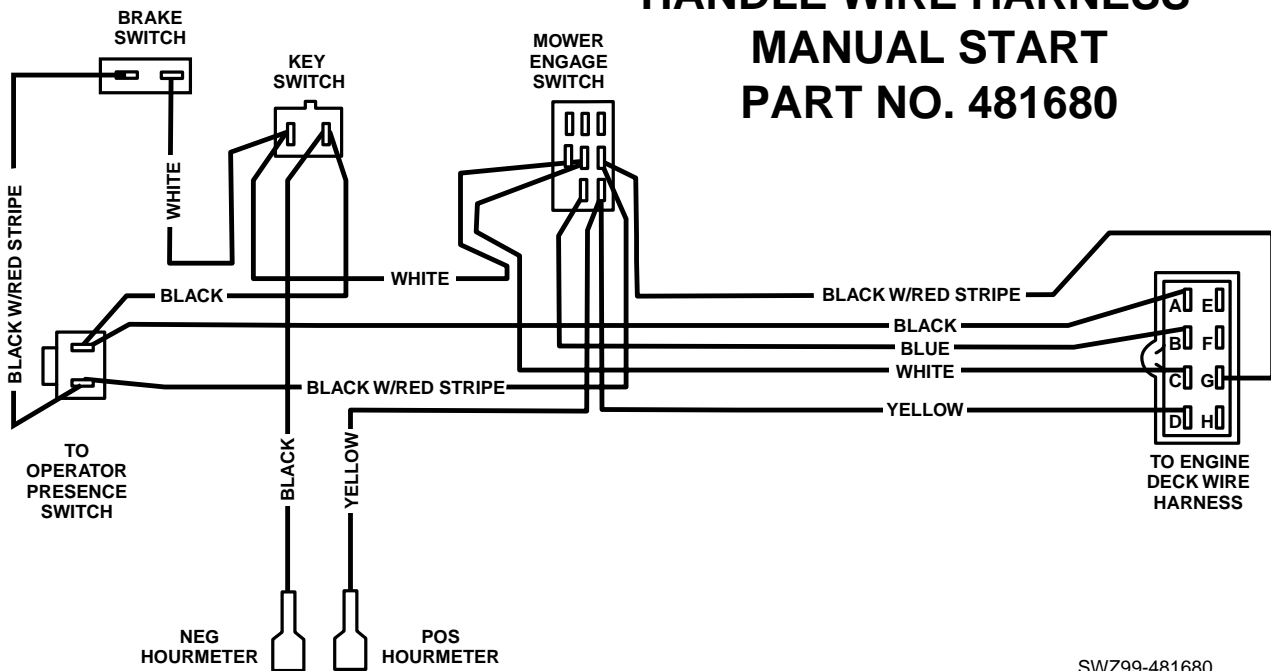


SC481275

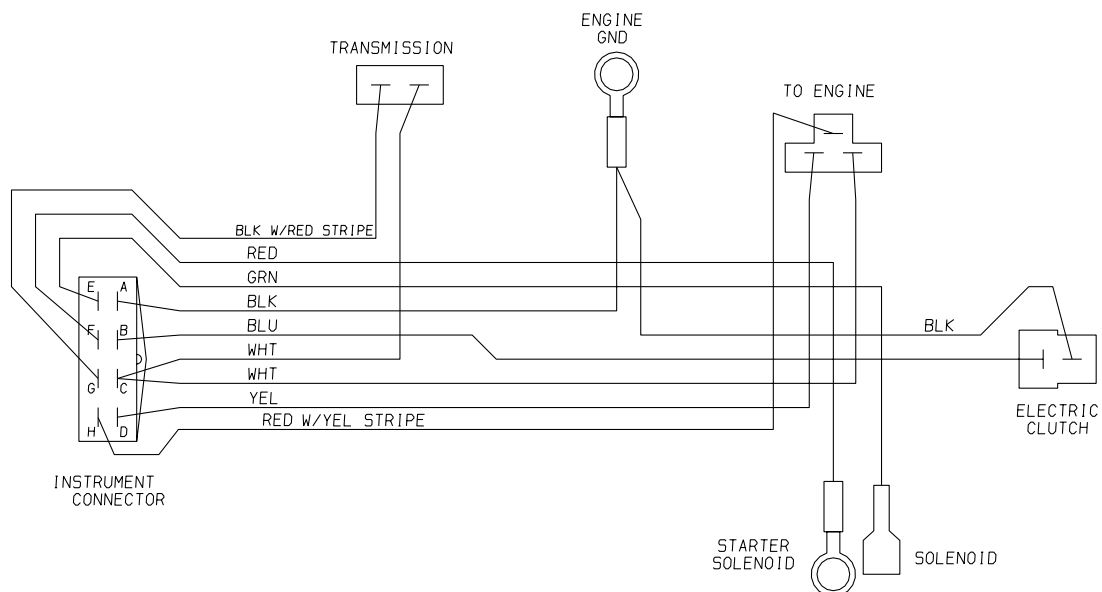
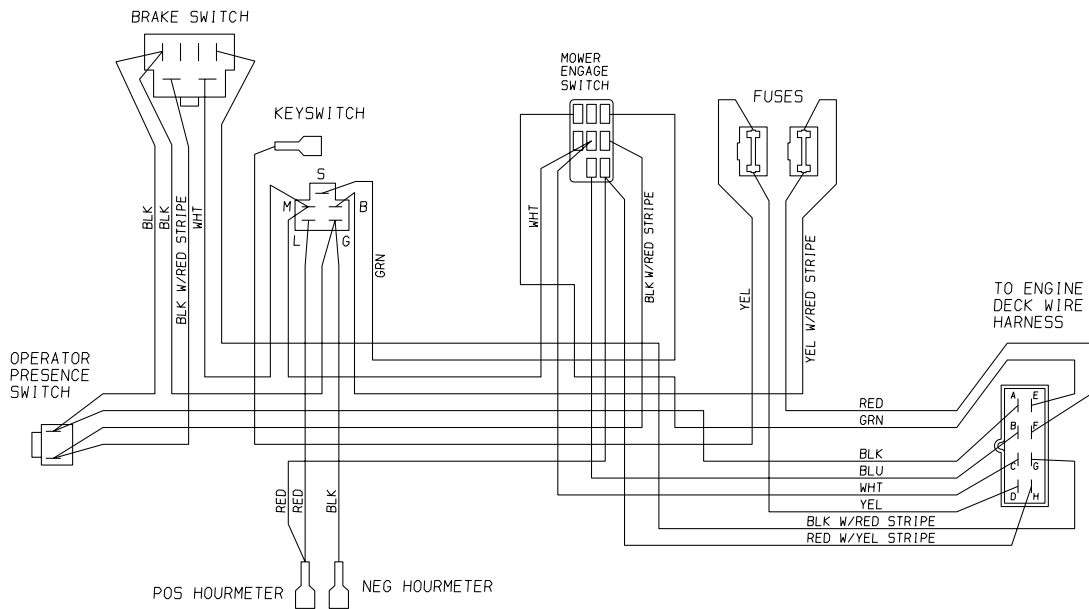
## ENGINE DECK WIRE HARNESS - KAWASAKI PART NO. 481074



## HANDLE WIRE HARNESS - MANUAL START PART NO. 481680



## HANDLE WIRING HARNESS KAWASAKI ELECTRIC START PART NUMBER: 482026



## ENGINE DECK WIRING HARNESS KAWASAKI ELECTRIC START PART NUMBER: 482008

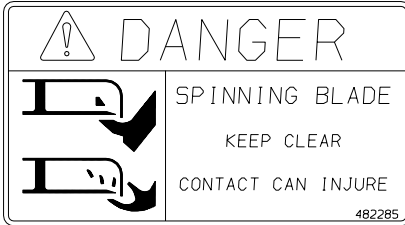
## REPLACEMENT DECALS & INFORMATION



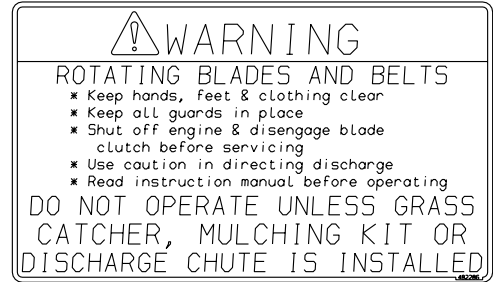
48072  
481971



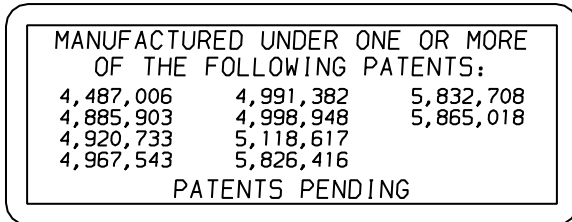
48314



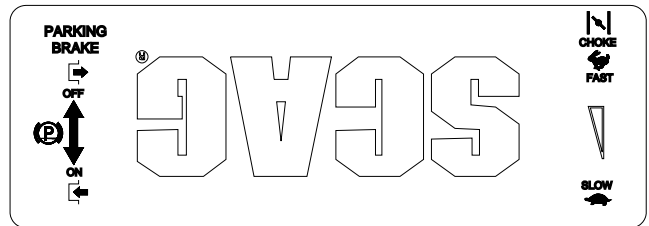
482285



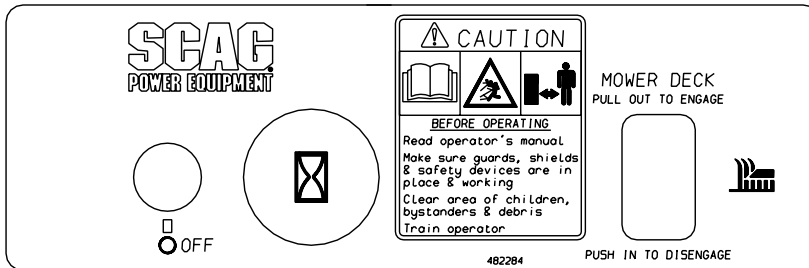
482286



48656



481414



482284



48404

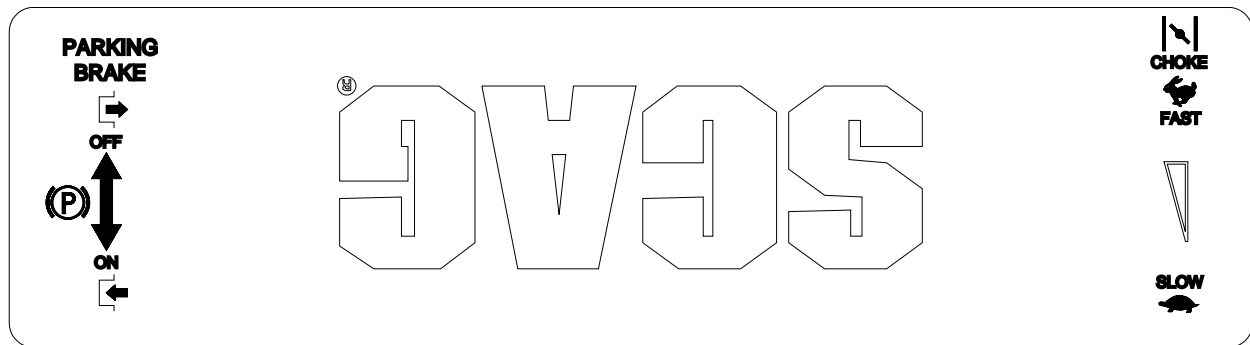


481109

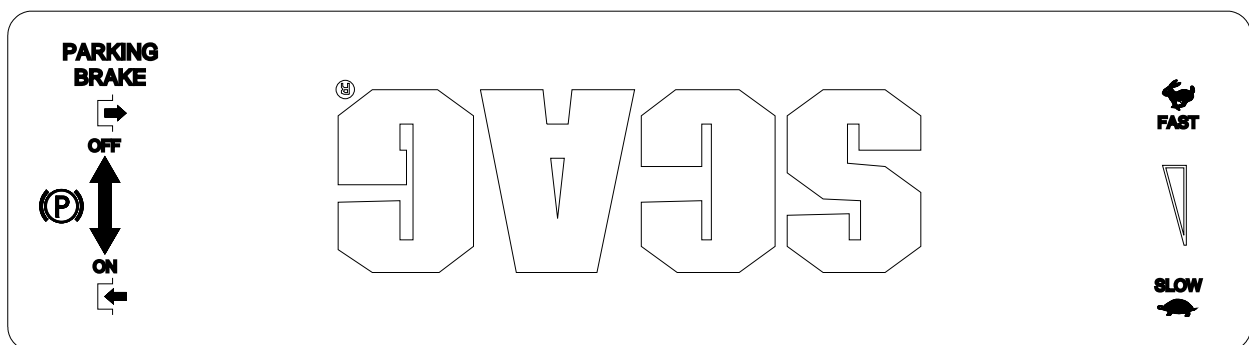


481039

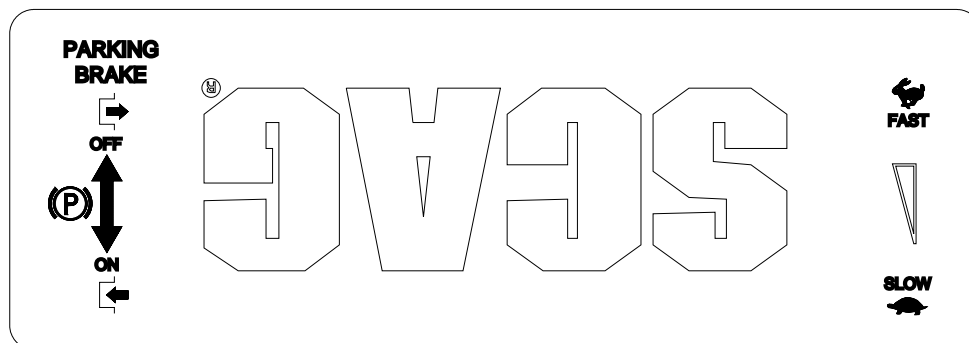
## REPLACEMENT DECALS & INFORMATION



481415



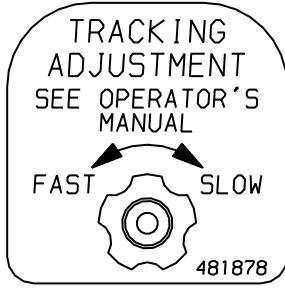
481423



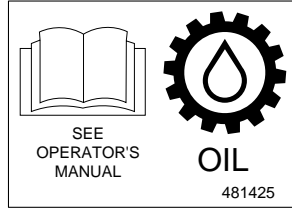
481438



36" - 482297  
48" - 481953  
52" - 481954  
61" - 481955  
72" - 481956



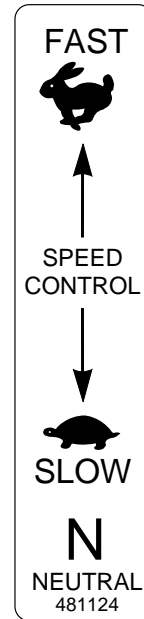
481878



481425



481942



481124