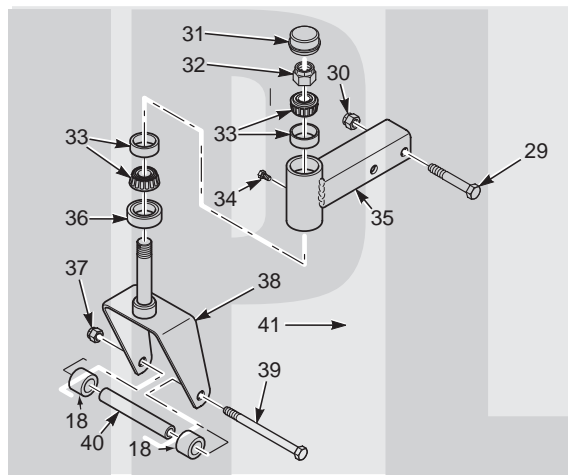


SCAG[®]

POWER EQUIPMENT



MODEL SFZ

ILLUSTRATED PARTS LIST

THIS MANUAL CONTAINS THE ILLUSTRATED PARTS LIST FOR MODELS:

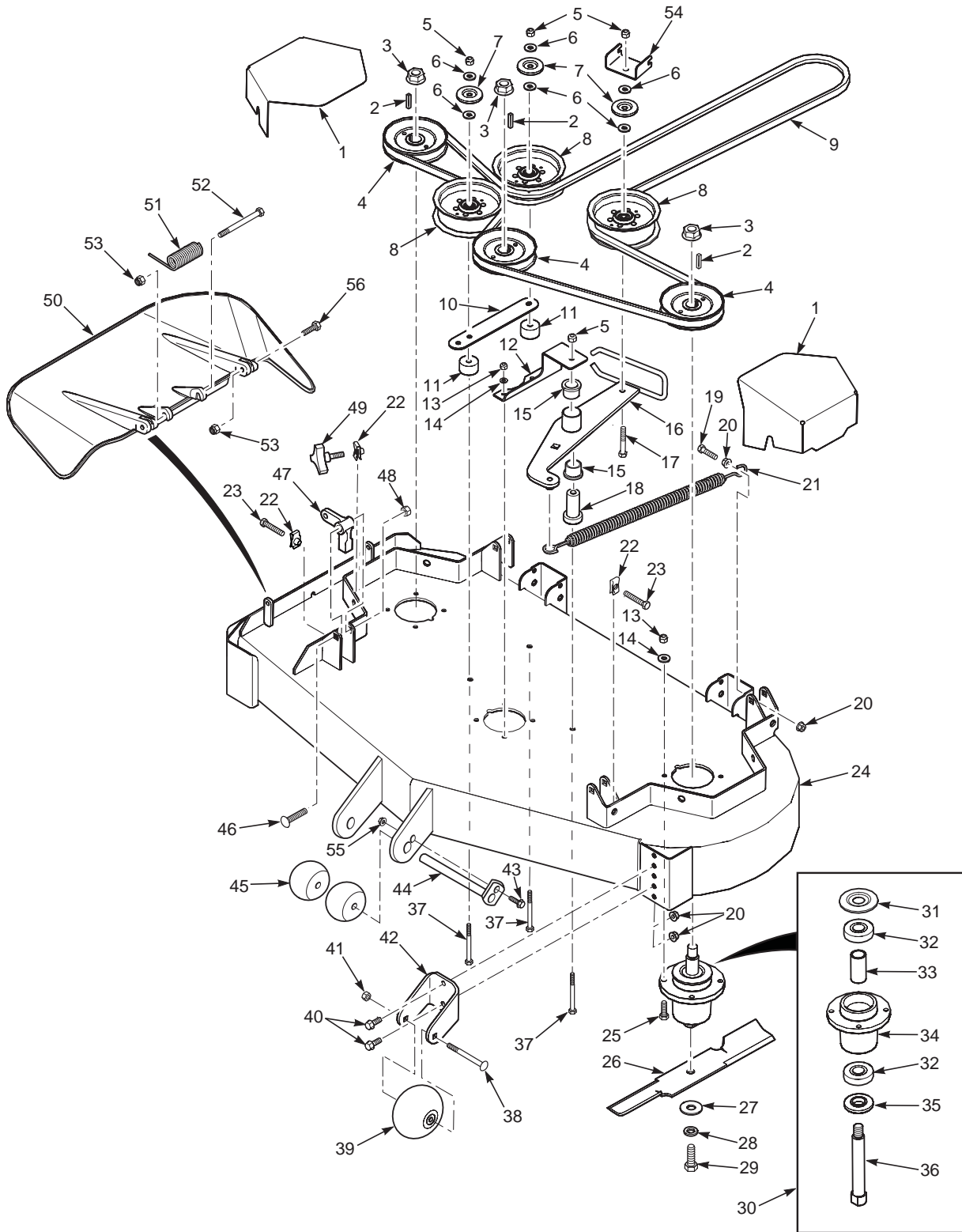
SFZ48-19KA	with a serial number of D1700001 to D1799999
SFZ48-26BS	with a serial number of D1500001 to D1599999
SFZ52-19KA	with a serial number of D1900001 to D1999999
SFZ52-26BS	with a serial number of D1800001 to D1899999
SMFZ-48	with a serial number of D1600001 to D1699999
SMFZ-52	with a serial number of D2000001 to D2099999



ILLUSTRATED PARTS LIST TABLE OF CONTENTS

SUBJECT	PAGE
48, 52 Cutter Deck.....	2-3
Cutter Deck Controls	4-5
Sheet Metal Components	6-7
SFZ Roll Over Protection System	8-9
Drive System Components	10-11
Fuel and Electrical System	12-13
ZT-2800 Hydraulic Axle Assembly	14-15
Replacement Decals	16-17
Electrical Schematic - SFZ	18

48" & 52" CUTTER DECKS

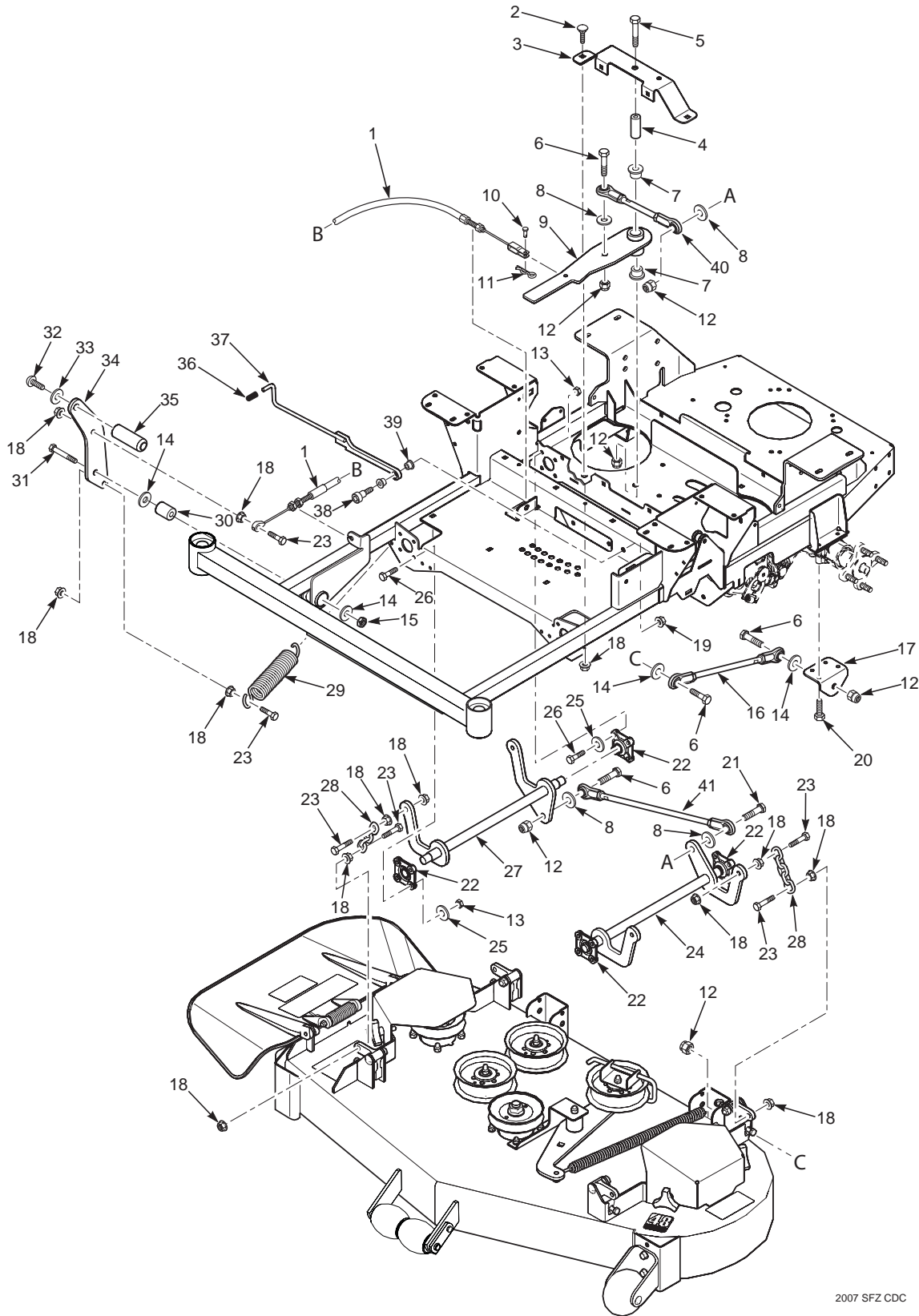


48" & 52" CUTTER DECKS

Ref. Part			48 52	Ref. Part			48 52
No.	No.	Description		No.	No.	Description	
1	424528	Belt Cover	x	28	04030-07	Lockwasher, 1/2 Spring	x x
2	04063-01	Key, 1/4 x 1/4 x 1-1/4"	x	29	04001-121	Bolt, Hex Head 5/8-11 x 1-1/2"	x x
3	04112-06	Nut, 3/4-16 Spiral Lock	x	30	461950	Spindle Assembly	x x
4	483323	Pulley, 5.13" OD - 25mm Bore	x	31	483304	Debris Shield	x x
	483324	Pulley, 5.73" OD - 25mm Bore	x	32	483303	Bearing	x x
5	04021-09	Nut, Elastic Stop 3/8-16	x	33	43693	Spacer, Bearing	x x
6	04043-04	Flatwasher, 3/8 - .391 x .938 x .105	x	34	462014	Spindle Housing Assembly (incl. 32, 33)	x x
7	424367	Dust Shield	x	35	43694	Protector, Bearing	x x
8	483422	Pulley, 5" Idler	x	36	43695	Shaft, Spindle	x x
9	483325	Belt, Cutter Deck	x	37	04001-77	Bolt, Hex Head 3/8-16 x 3-1/2"	x x
	483326	Belt, Cutter Deck	x	38	04003-26	Bolt, Carriage 3/8-16 x 4"	x x
10	424479	Brace, Pulley	x	39	481632	Wheel, Anti-Scalp	x x
11	43711	Spacer	x	40	04017-27	Bolt, Hex Head 3/8-16 x 1" Serr. Flange	x x
12	424548	Support, Idler Pivot	x	41	04021-05	Nut, Center Lock 3/8-16	x x
	424547	Support, Idler Pivot	x	42	422478	Bracket, Anti-Scalp	x x
13	04021-22	Nut, Elastic Stop 5/16-18	x	43	04001-09	Bolt, Hex Head 5/16-18 x 1"	x x
14	04030-03	Lockwasher, 5/16 Spring	x	44	451926	Shaft Weldment	x x
15	483453-03	Bearing	x	45	482295	Wheel, Anti-Scalp	x x
16	462037	Idler Arm (incl. Item #15)	x	46	04003-42	Bolt, Carriage 7/16-14 x 2-1/4"	x x
17	04001-31	Bolt, Hex Head 3/8-16 x 2-1/2"	x	47	483361	Lever, Deck Level	x x
18	43708	Pivot, Idler	x	48	04021-11	Nut, Elastic Stop 7/16-14	x x
19	04001-136	Bolt, Hex Head 3/8-16 x 1-1/2" Gr. 8	x	49	481625-01	Knob w/Stud	x x
20	04019-04	Nut, Serrated Flange 3/8-16	x	50	462031	Discharge Chute Assembly	x
21	483375	Spring, Idler	x		462032	Discharge Chute Assembly	x
22	04110-03	U-Nut, 3/8-16	x	51	482245	Spring, Discharge Chute	x x
23	04107-04	Bolt, Hex Head 3/8-16 x 2" Special Lock	x	52	04001-154	Bolt, Hex Head 5/16-18 x 4-3/4"	x x
24	462039	Cutter Deck w/Decals, SFZ	x	53	04021-10	Nut, Elastic Stop 5/16-18	x x
	*462038	Cutter Deck w/Decals, SFZ	x	54	424615	Bracket, Belt Guide	x x
	462040	Cutter Deck w/Decals, SFZ	x	55	04019-03	Nut, Serrated Flange 5/16-18	x x
25	04001-11	Bolt, Hex Head 5/16-18 x 1-1/2"	x	56	04001-12	Bolt, Hex Head 5/16-18 x 1-3/4"	x x
26	482877	Cutter Blade, 16.5"	x				
	482878	Cutter Blade, 18"	x				
27	04043-06	Flatwasher, 5/8-.688 x 1.75 x .134 HD	x				

* Used on machines with a serial number in the following range only. D1500001 to D1500047.

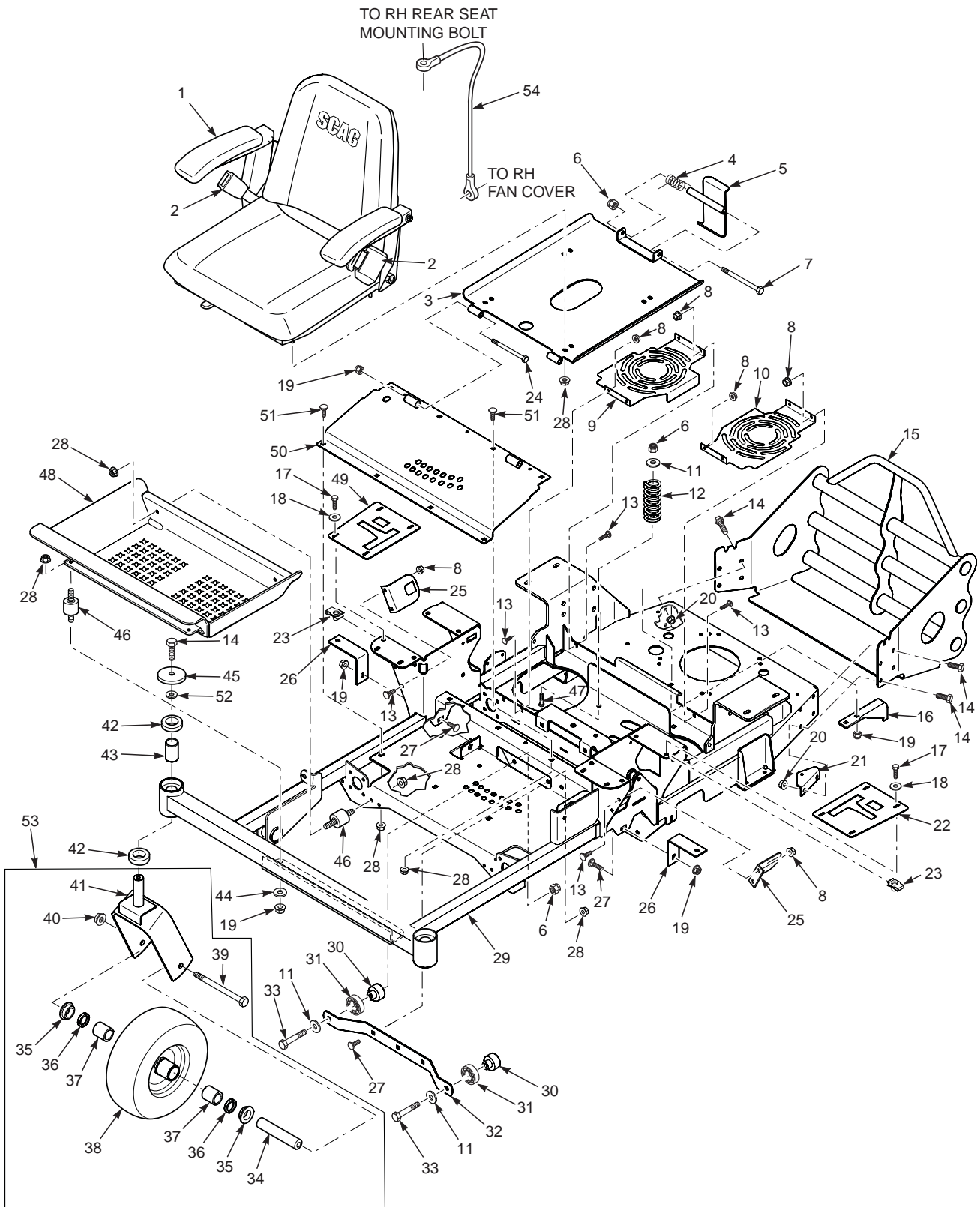
CUTTER DECK CONTROLS



CUTTER DECK CONTROLS

Ref. No.	Part No.	Description
1	483341	Cable, Deck Lift
2	04003-31	Bolt, Carriage 3/8-16 x 3/4"
3	424476	Support, Idler Arm
4	43710	Spacer, Deck Lift Pivot
5	04001-90	Bolt, Hex Head 1/2-13 x 3-1/4"
6	04001-183	Bolt, Hex Head 1/2-13 x 1-3/4"
7	483453-03	Bearing
8	04040-07	Flatwasher, 1/2-.531 x 1.06 x .095
9	461999	Deck Lift Bellcrank Assy.
10	04064-17	Clevis Pin, 5/16 x 3/4"
11	04062-01	Hair Pin, .094 x 1.62"
12	04021-07	Nut, Elastic Stop 1/2-13
13	04021-10	Nut, Elastic Stop 5/16-18
14	04040-13	Flatwasher, 1/2-.562 x 1.375 x .109
15	04021-19	Nut, Center Lock 1/2-13
16	483332	Linkage, Push Arm
17	424489	Bracket, Push Arm Link
18	04019-04	Nut, Serrated Flange 3/8-16
19	04021-09	Nut, Elastic Stop 3/8-16
20	04001-49	Bolt, Hex Head 5/16-18 x 3"
21	04001-52	Bolt, Hex Head 1/2-13 x 2-1/2"
22	483334	Bearing, Deck Lift
23	04001-20	Bolt, Hex Head 3/8-16 x 1-1/2"
24	451868	Weldment, Deck Lift LH
25	04040-14	Flatwasher, 1/4-.312 x .750 x .065
26	04001-09	Bolt, Hex Head 5/16-18 x 1"
27	451867	Weldment, Deck Lift RH
28	482628	Chain, Deck Lift
29	483374	Spring, Deck Lift
30	43710	Sleeve, Deck Lift Pivot
31	04001-74	Bolt, Hex Head 1/2-13 x 3"
32	04105-01	Bolt, Hex Socket 5/8-11 x 1-1/2"
33	04030-07	Lockwasher, 5/8" Spring
34	424535	Pedal, Foot Bracket
35	424504	Foot Pedal
36	483492	Grip, Deck Latch
37	491254	Weldment, Deck Latch
38	04009-06	Bolt, Shoulder 1/2 x 1/2"
39	483453-10	Bearing
40	483328	Linkage Assy., Deck Lift
41	483367	Linkage Assy., Deck Lift

SHEET METAL COMPONENTS

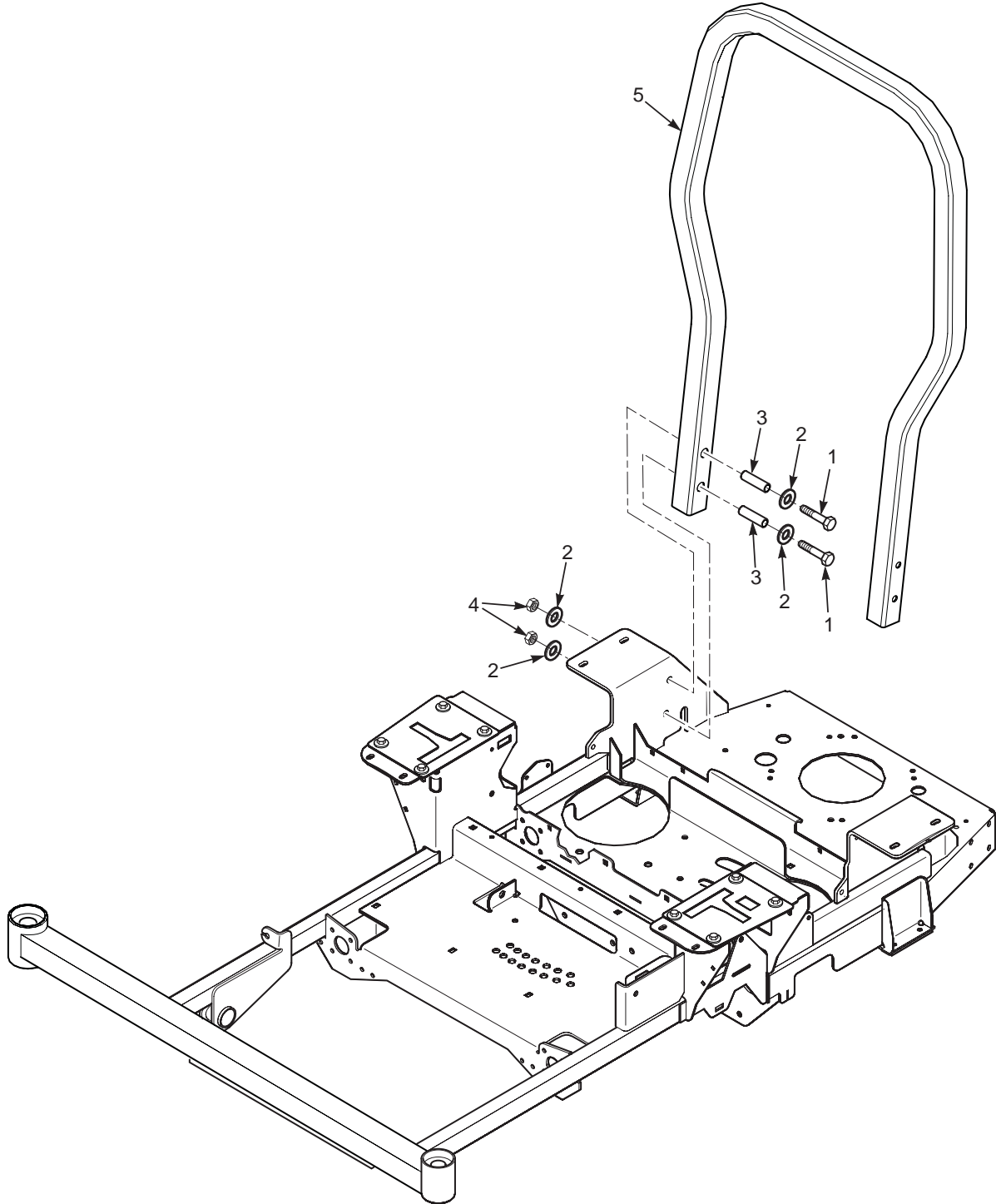


SHEET METAL COMPONENTS

Ref. Part No.	Part No.	Description	Ref. Part No.	Part No.	Description
1	483408	Seat Assembly	28	04019-03	Nut, Serrated Flange 5/16-18
	483544	Back Cushion	29	462022	Main Frame w/Decals
	483545	Bottom Cushion		*462016	Main Frame w/Decals
	483549	Arm Rest Kit	30	43703	Spacer, Bearing
	483543	Seat Adjustment Track Set	31	483379	Bearing
2	483412	Seat Belt Assembly, Retractable	32	424480	Support, Deck Guide
	461990	Hardware Package, Seat Belt Mounting	33	04001-31	Bolt, Hex Head 3/8-16 x 2-1/2"
3	462034	Seat Base w/decals	34	43698	Sleeve, Front Caster Wheel
	*462029	Seat Base w/decals	35	483453-09	Bearing
4	483371	Spring, Seat Latch	36	483486	Seal, 1 x 1.375 x .25
5	451883	Seat Latch	37	483453-08	Bearing
6	04021-09	Nut, Elastic Stop 3/8-16	38	483409	Caster Wheel Assembly
7	04001-100	Bolt, Hex Head 3/8-16 x 6"		483417	Tire, 11 x4-5.00 2-Ply
8	04019-02	Nut, Serrated Flange 1/4-20		483410	Rim, 5 x 3.25 w/Valve
9	424585	Cover, Fan RH	39	04001-80	Bolt, Hex Head 1/2-13 x 6-1/2"
10	424550	Cover, Fan LH	40	04021-07	Nut, Elastic Stop 1/2-13
11	04041-07	Flatwasher, 3/8-.391 x .938 x .105	41	451845	Yoke, Caster Wheel
12	483372	Spring, Seat	42	483466	Bearing
13	04003-07	Bolt, Carriage 1/4-20 x 1/2"	43	43736	Spacer, Caster Bearing
14	04001-19	Bolt, Hex Head 3/8-16 x 1"	44	04040-15	Flatwasher, 5/16-.375 x .875 x .083
15	451929	Rear Bumper	45	04041-38	Flatwasher, 3/8-.406 x 2.25 x .188
16	424523	Bracket, Anti-Rotation	46	483493	Rubber Isolator
17	04001-14	Bolt, Hex Head 1/4-20 x 1"	47	04003-11	Bolt, Carriage 3/8-16 x 1-1/4"
18	04040-14	Flatwasher, 1/4-.312 x .750 x .065	48	451889	Foot Plate Weldment
19	04021-10	Nut, Elastic Stop 5/16-18	49	462024	Control Plate RH
20	04019-04	Nut, Serrated Flange 3/8-16		*462018	Control Plate RH
21	424639	Bracket, Dump Valve	50	462005	Weldment, Deck Lift Cover
22	462023	Control Plate LH	51	04003-14	Bolt, Carriage 5/16-18 x 1/2"
	*462017	Control Plate LH	52	04040-11	Flatwasher, 7/16-.500 x 1.250 x .083
23	04110-01	U-Nut 1/4-20	53	462015	Caster Wheel Assembly w/Yoke
24	04001-73	Bolt, Hex Head 5/16-18 x 3-3/4"	54	483559	Cable, Seat Stop
25	424511	Bracket, Switch Mount			
26	424516	Bracket, Tank Mount			
27	04003-12	Bolt, Carriage 5/16-18 x 3/4"			

* Used on machines with a serial number in the following range only. D1500001 to D1500047.

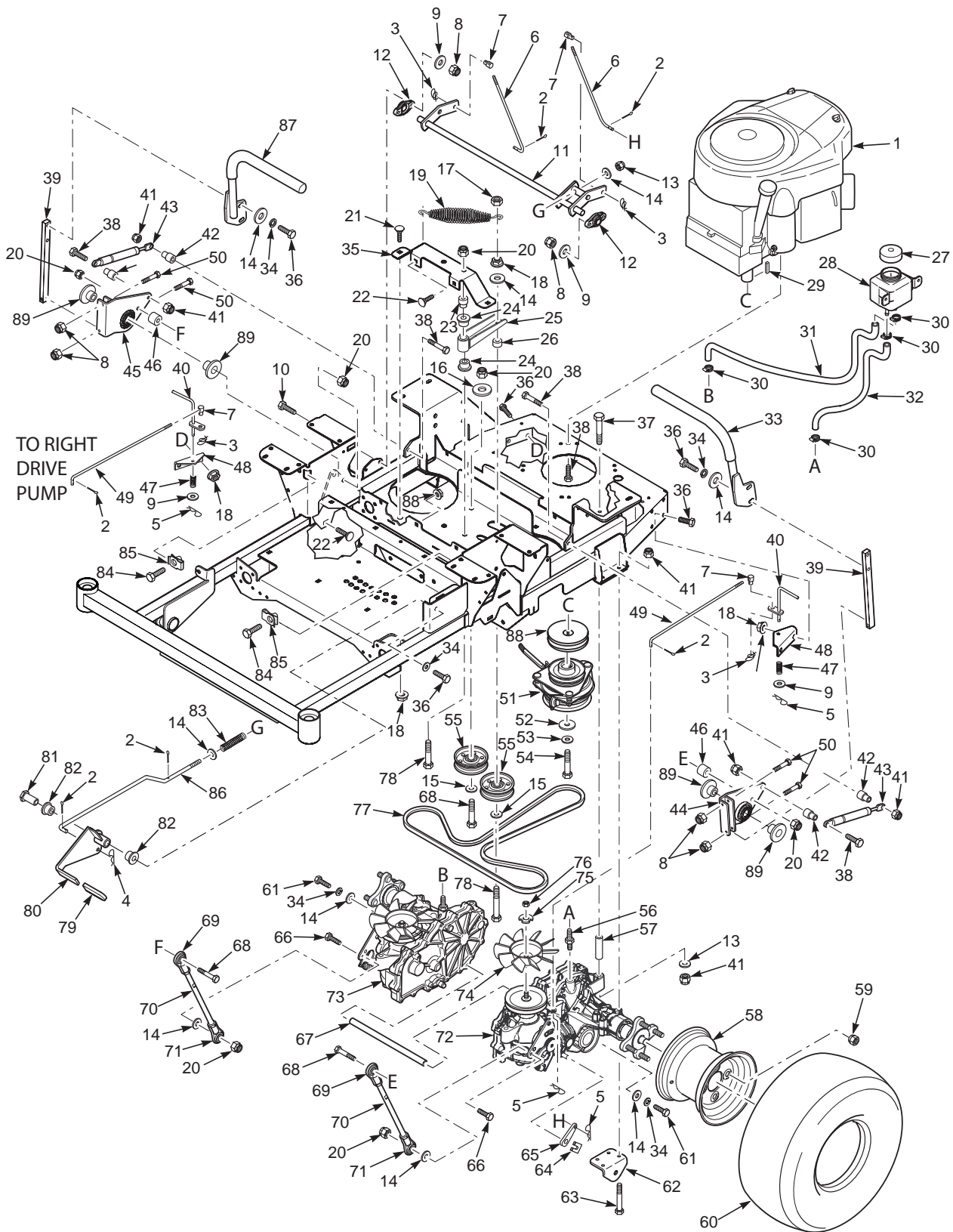
SFZ ROLL-OVER PROTECTION SYSTEM



SFZ ROLL-OVER PROTECTION SYSTEM

Ref. Part No. No.	Description
1 04001-184	Bolt, Hex Head 1/2-13 x 3-1/4" Gr. 8
2 04040-13	Flatwasher, 1/2-.562 x 1.375 x .109
3 43743	Bushing, SFZ ROPS
4 04021-19	Nut, Center Lock 1/2-13
5 462021	ROPS, SFZ

DRIVE SYSTEM COMPONENTS

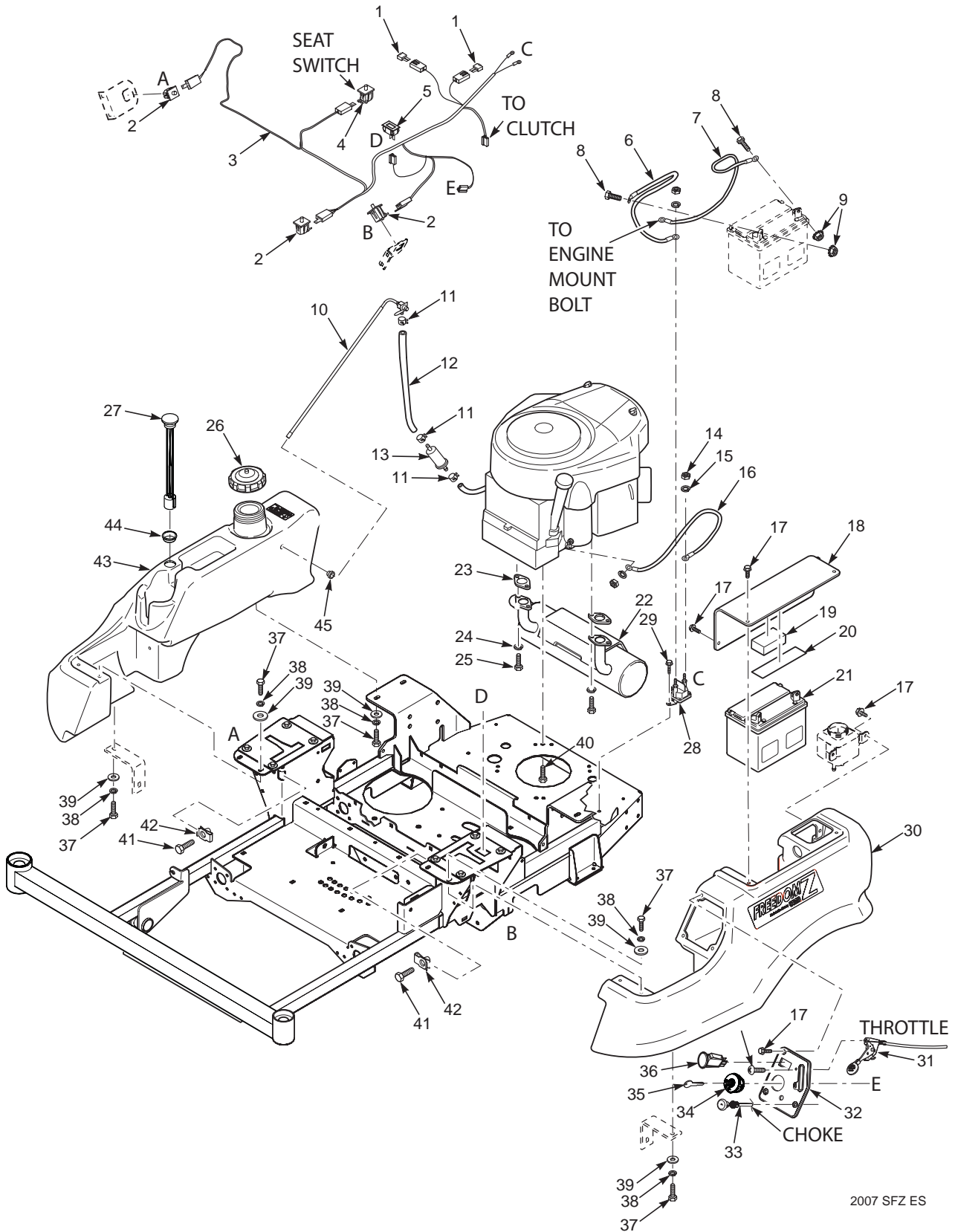


DRIVE SYSTEM COMPONENTS

Ref. Part No. No.	Description	Ref. Part No. No.	Description
1	483465 Engine, Briggs & Stratton 26hp	49	44162 Rod, Brake Linkage
	483516 Engine, Kawasaki 19hp	50	04001-04 Bolt, Hex Head 1/4-20 x 1-1/2"
2	04061-01 Cotter Pin, 3/32 x 1"	51	462012 Electric Clutch Assy.
3	04069-01 Pin, Rue Cotter 3/8" Dia.	52	04041-28 Flatwasher, 7/16-.469 x 1.75 x .25
4	04062-02 Hair Pin Cotter, .080 x 1.19"	53	04030-05 Lockwasher, 7/16" Spring
5	04019-03 Nut, Serrated Flange 5/16-18	54	04102-03 Bolt, Hex Head 7/16-20 x 2-1/4" Patch
6	44165 Rod, Brake Adjustment	55	483421 Pulley, 3-1/2" Dia.
7	43726 Joint, Swivel	56	482800-03 Fitting, Transmission
8	04021-08 Nut, Elastic Stop 1/4-20	57	43700 Spacer, Axle
9	04040-14 Flatwasher, 1/4-.312 x .750 x .065	58	481868 Rim w/Valve Stem
10	04017-07 Bolt, Serrated Flange 1/4-20 x 1-1/4"	59	04028-02 Wheel Nut, 1/2-20
11	451884 Weldment, Brake Lever	60	483390 Wheel Assy.
12	483504 Bearing		483389 Tire, 20 x 10-8 2-Ply
13	04040-15 Flatwasher, 5/16-.375 x .875 x .083	61	04001-46 Bolt, Hex Head 3/8-16 x 2-1/4"
14	04041-07 Flatwasher, 3/8-.391 x .938 x .105	62	424489 Bracket, Pusharm Link
15	04043-04 Flatwasher, 3/8-.391 x .938 x .105 HD	63	04001-49 Bolt, Hex Head 5/16-18 x 3"
16	04041-11 Flatwasher, 3/8-.406 x 1.5 x 7 GA.	64	HG52027 Clip, Brake Lever
17	04021-05 Nut, Center Lock 3/8-16	65	HG52639 Lever, Brake
18	04019-04 Nut, Serrated Flange 3/8-16	66	04001-32 Bolt, Hex Head 3/8-16 x 1-1/4"
19	483087 Spring, Transmission Idler	67	43701 Spacer, Axles
20	04021-09 Nut, Elastic Stop 3/8-16	68	04001-45 Bolt, Hex Head 3/8-16 x 2"
21	04003-31 Bolt, Carriage 3/8-16 x 3/4"	69	483339 Rod End, 3/8-24 UNF RH
22	04003-12 Bolt, Carriage 5/16-18 x 3/4"		04020-25 Nut, Jam 3/8-24 UNF RH
23	43715 Shaft Pivot, Idler Arm	70	483337 Linkage, Pump
24	483453-04 Bearing	71	483340 Rod End, 3/8-24 UNF LH
25	462004 Transmission Idler Arm Assy.		04020-26 Nut, Jam 3/8-24 UNF LH
26	43720 Spacer, Idler Pulley	72	483527 Transaxle Assy, LH (ZL-KCEF-3LKG-1EXX)
27	483514 Cap		*483348 Transaxle Assy, LH (ZJ-KCEE-1B7C-1EXX)
28	483438 Reservoir Assy.	73	483528 Transaxle Assy, RH (ZL-GCEF-3LKF-1EXX)
29	04063-31 Key, 1/4 x 1/4 x 1-3/4"		*483347 Transaxle Assy, RH (ZJ-GCEE-1F7B-1EXX)
30	48136-05 Clamp, .87" Max Dia.	74	HG51862 Fan
31	483431 Hose, RH Transmission	75	HG51523 Fan Washer
32	483432 Hose, LH Transmission	76	HG44133 Fan Nut
33	462001 Handle Bar Assy. w/Grip	77	483314 Belt, Transmission Drive
	482340 Grip		*483463 Belt, Transmission Drive
34	04030-04 Lockwasher, 3/8" Spring	78	04001-54 Bolt, Hex Head 3/8-16 x 3"
35	424476 Support, Idler Arm	79	482102 Grip, Brake Handle
36	04001-19 Bolt, Hex Head 3/8-16 x 1"	80	462010 Brake Handle Assy.
37	04001-49 Bolt, Hex Head 5/16-18 x 3"	81	43722 Spacer, Brake Handle
38	04001-11 Bolt, Hex Head 5/16-18 x 1-1/2"	82	483453-05 Bearing
39	424498 Bar, Control Lever	83	483538 Spring, Brake
40	451912 Dump Valve Lever	84	04107-01 Bolt, Hex Head 3/8-16 x 1-1/4 Special Lock
41	04021-10 Nut, Elastic Stop 5/16-18	85	04110-03 U-Nut, 3/8-16
42	43602 Spacer, Pump Dampener	86	44157 Rod, Brake Linkage
43	482794 Dampener	87	462000 Handle Bar w/Grip
44	462019 Control Linkage, LH		482340 Grip
45	462020 Control Linkage, RH	88	483320 Pulley, 4-1/2" Dia. 1" Bore
46	43674 Spacer		*483464 Pulley, 4" Dia. 1" Bore
47	482070 Spring	89	43719 Spacer, Linkage
48	424639 Bracket, Dump Mounting		

* Used on machines with a serial number in the following range only. D1500001 to D1500047.

FUEL AND ELECTRICAL SYSTEM



2007 SFZ ES

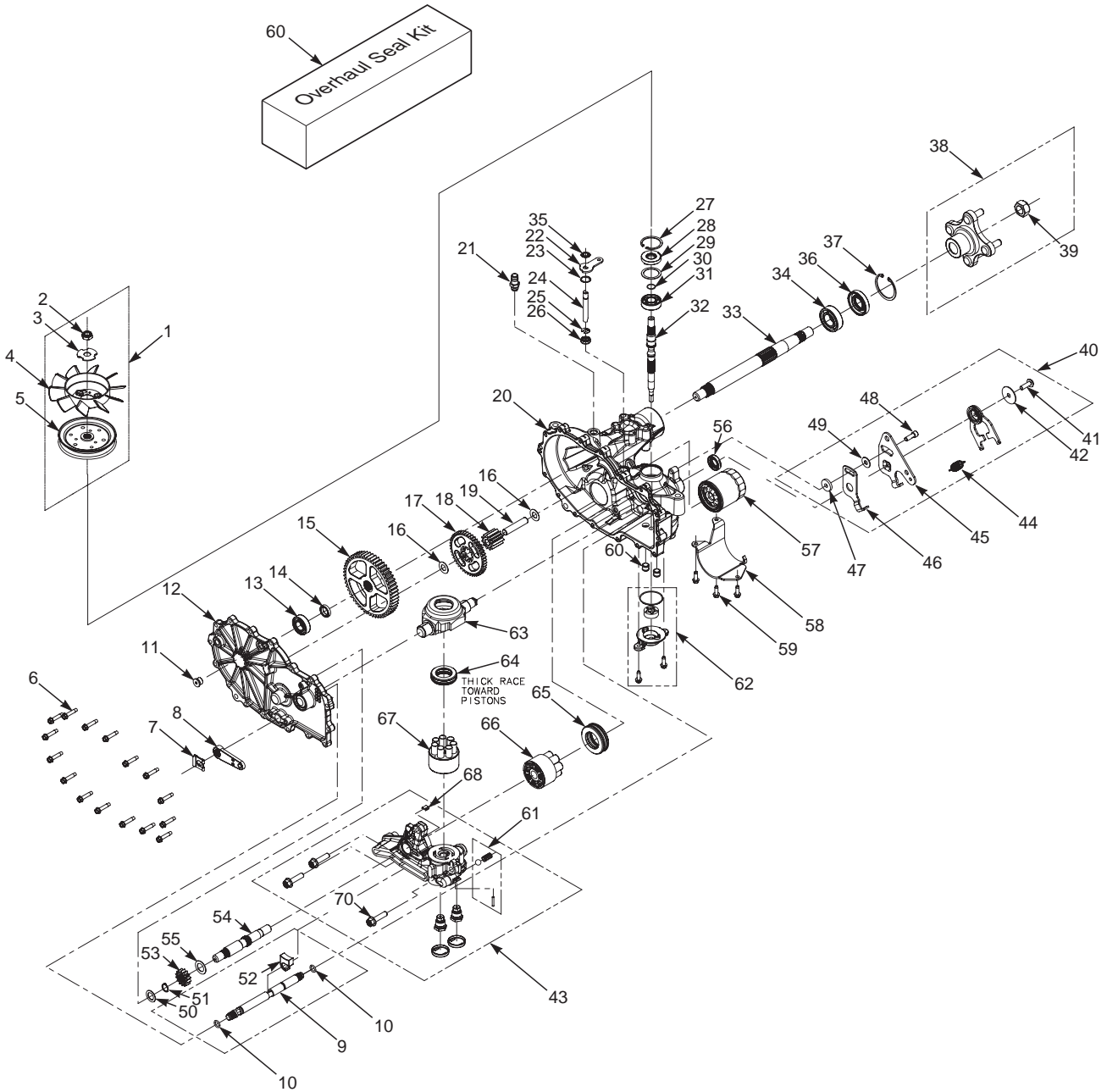
FUEL AND ELECTRICAL SYSTEM

Ref. Part No. No.	Description	Ref. Part No. No.	Description
1	48298 Fuse, 20amp	29	04011-14 Bolt, Self Tapping 1/4-20 x 3/4" Shakeproof
2	483473 Switch	30	483364 Tank, LH
3	483558 Wire Harness, Main	31	483434 Throttle Cable
4	483474 Switch, Seat	32	462036 Instrument Panel w/Decal
5	483537 Hourmeter	33	483435 Choke Cable
6	48029-13 Battery Cable, Red 25"	34	483472 Ignition Switch
7	48029-11 Battery Cable, Black 27"	35	48017-02 Key, Ignition
8	04001-44 Bolt, Hex Head 1/4-20 x 1/2"	36	483162 PTO Switch
9	04020-02 Nut, 1/4-20	37	04001-08 Bolt, Hex Head 5/16-18 x 3/4"
10	483555 Fuel Tube Assy.	38	04030-03 Lockwasher, 5/16" Spring
	*48568 Valve, Fuel Shutoff	39	04040-15 Flatwasher, 5/16-.375 x .875 x .083
11	48059-01 Clamp, Fuel Hose 1/4"ID	40	04001-11 Bolt, Hex Head 5/16-18 x 1-1/2"
12	48058 Fuel Hose (order by inch)	41	04107-03 Bolt, Hex Head 3/8-16 x 1-1/4" Special Lock
13	** Fuel Filter	42	04110-03 U-Nut, 3/8-16
14	Nut, 5/16-24 UNF Jam	43	462009 Fuel Tank Assy, RH
15	Lockwasher, 5/16"	44	483536 Grommet
16	48029-09 Battery Cable, Red 9"	45	482571 Bushing, .56" Dia. Viton
17	04017-04 Bolt, Hex Head 1/4-20 x 1/2" Serrated Flange		
18	461996 Battery Cover (incl. items 19 & 20)		
19	483452 Pad, Battery Hold Down		
20	483508 Rubber Pad		
21	483420 Battery (not avail. through Scag)		
22	483381 Muffler, Briggs & Stratton		
	483383 Muffler, Kawasaki		
23	** Exhaust Gasket		
24	** Lockwasher		
25	** Bolt		
26	482547 Cap, Fuel Tank		
27	483523 Fuel Gauge Assy.		
28	483278 Solenoid		

* Used on machines with a serial number in the following range only. D1500001 to D1500047.

** Available through the individual engine manufacturer.

ZT-2800 HYDRAULIC AXLE ASSEMBLY



ZT-2800 HYDRAULIC AXLE ASSEMBLY

Ref. Part No. No. Description	Ref. Part No. No. Description
1 HG70489 Kit, Fan & Pulley	39 HG50863 Nut, Hex Locking 3/4-16
2 HG51244 Nut, Hex Locking 1/2-20	40 HG71595 Kit, RTN Assembly
3 HG51523 Washer, Slotted	41 HG51812 Bolt, 5/16-24 x 1" Patch
4 HG51862 Fan, 7" Dia. (10 Blade)	42 HG51950 Washer, .343 x 1.5 x .062
5 HG52364 Pulley, Cupped 4-1/2" Dia.	43 HG71565 Kit, Center Section RH
HG52366 Hub, Pulley	HG71566 Kit, Center Section LH
6 HG51190 Bolt, Hex Head 1/4-20 x 1-1/4"	44 HG51605 Spring
7 HG52027 Clip, Retaining	45 HG52682 Arm, Control
8 HG52639 Handle, Brake	46 HG51945 Arm, Neutral RH
9 HG52640 Shaft, Brake	HG51946 Arm, Neutral LH
10 HG51804 O-Ring	47 HG52527 Spacer, .320 x 1.005 x .179
11 HG9005110-5600 Plug, 9/16-18	48 HG51616 Bolt, 5/16-24 x 1" Patch
12 HG71572 Kit, Side Cover RH	49 HG44130 Washer, .34 x .88 x .06
HG71574 Kit, Side Cover LH	50 HG44371 Washer, .63 x 1.0 x .05
13 HG44121 Bearing, Ball .75 x 40 x 12	51 HG44145 Ring, Retaining
14 HG52161 Spacer, .75 x 1.0 x .257	52 HG52641 Pawl, Brake
15 HG52108 Gear, 54T	53 HG52341 Gear, 14T Steel
16 HG50132 Washer, .5 x 1.0 x .03	54 HG52150 Shaft, Motor
17 HG52110 Gear, 45T	55 HG51069 Washer, .72 x 1.16 x .04
18 HG52586 Gear, 11T Steel	56 HG51140 Seal, Lip 18 x 32 x 7
19 HG51083 Jackshaft Pin	57 HG52114 Filter
20 HG71413 Kit, Housing RH	58 HG52257 Filter Guard
HG71421 Kit, Housing LH	59 HG50752 Bolt, 1/4-20 x 3/4"
21 482800-03 Fitting	60 HG71410 Seal Kit
22 HG51329 Arm, Bypass	61 HG71436 Kit, Charge Relief
23 HG51627 Ring, Retaining .750 Internal	62 HG71411 Kit, Charge Pump
24 HG52136 Rod, Bypass	63 HG51048 Trunnion Swashplate
25 HG51628 Ring, Retaining .375 External	64 HG50551 Thrust Bearing
26 HG51626 Seal, Lip .375 x .75 x .25	65 HG51462 Thrust Bearing
27 HG50329 Ring, Retaining 2.06 Internal	66 HG71579 Kit, Motor Cylinder Block
28 HG51161 Seal, Lip 17 x 40 x 7	67 HG70723 Kit, Cylinder Block
29 HG50951 Washer, 1.23 x 1.56 x .04	68 HG71448 Plate, Bypass
30 HG2000022 Ring, Retaining Wire	69 HG71436 Kit, Charge Relief
31 HG50315 Bearing, Ball 17 x 40 x 12 Open	70 HG52137 Bolt, Hex Head 3/8-16 x 1-1/2" Patch
32 HG52155 Shaft, Input	
33 HG71569 Shaft Kit, Axle	
34 HG50771 Bearing, Ball 1.0 x 52 x 15 Open	
35 HG51630 Ring, Retaining .375 External	
36 HG50772 Seal, Lip 25 x 52 x 10 TC Gray	
37 HG50859 Ring, Retaining 2.06 Internal	
38 HG71405 Kit, Hub	
HG71241 Hub, Puller (not shown)	

REPLACEMENT DECALS AND INFORMATION PLATES

WARNING

INSTALL BELT COVER BEFORE OPERATING MACHINE
 READ OPERATOR'S MANUAL 483402 1

WARNING
DO NOT OPERATE WITHOUT DISCHARGE CHUTE, MULCHING KIT, OR ENTIRE GRASS CATCHER INSTALLED 483405 2

IMPORTANT
 Operation on slopes can be hazardous.
 This machine was originally equipped with a Rollover Protection Device with a Roll Bar and Seat Belt.
 See your dealer if either is missing or damaged. 483425 3

DANGER

SPINNING BLADES
KEEP CLEAR
BLADE CONTACT & THROWN OBJECTS CAN INJURE 4

FORWARD

F
REVERSE

R 5

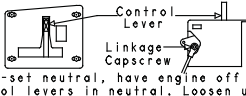
WARNING
 Replace seat only with Scag approved seat with seat mounting provisions and Scag approved seat belts.
 Failure to follow these directions could result in injury or death in the event of a rollover. 6

48
COMMERCIAL GRADE 7

WARNING
ROTATING BLADES AND BELTS
 * Keep hands, feet & clothing clear
 * Keep all guards in place
 * Shut off engine & disengage blade clutch before servicing
 * Use caution in directing discharge
 * Read instruction manual before operating
DO NOT OPERATE UNLESS GRASS CATCHER, MULCHING KIT OR DISCHARGE CHUTE IS INSTALLED 8

IMPORTANT ADJUSTMENT PROCEDURES
 READ OPERATORS MANUAL FOR MORE DETAILS
 Check tire pressure - Drive tires-8 psi -
 - Caster tires-25 psi


FREE WHEEL OPERATION
 To move machine without running engine, pull both dump valve rods up and back (located at rear of machine) and latch. Pull rods forward and latch into front slot to operate mower.

NEUTRAL ADJUSTMENT

 Control Lever
 Linkage
 Capscrew

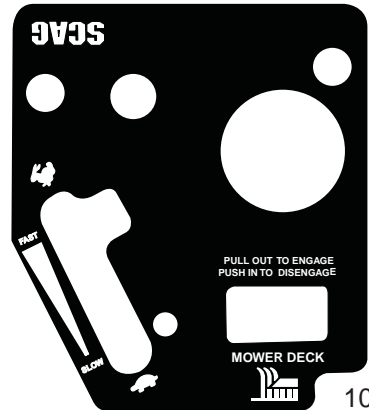
To re-set neutral, have engine off and control levers in neutral. Loosen upper linkage capscrew. Allow transmission to position linkage rod and tighten upper capscrew. Repeat for opposite side. If wheels still creep after adjustment, see an authorized Scag dealer.

HYDRAULIC FLUID LEVEL
 Check hydraulic fluid level while fluid is cool. Fluid level should be in sight window. Fill with 20W50 motor oil only.

IMPORTANT
 Do not overfill. Room for hot fluid expansion must be allowed or resulting expansion may cause leaks in the system.

TRACKING ADJUSTMENT

 Control Lever
 Stop Bolt

If machine pulls to right, adjust LH control stop bolt CW (inward) to slow left wheel down. Adjust RH control stop bolt CW (inward) to slow right wheel down. 9



SCAG FREEDOM Z 11

DECK LATCH RELEASE

FREEDOM Z
 Made in the USA by SCAG

WARNING
 HOLD SEATBELT TIGHT OR DEATH
 Read the Operator's Manual
 a distributor Scag
 operate only on slopes you can descend
 if machine stops going uphill,
 stop blades and back down slowly.
 Avoid sudden turns.
 Do not mow when children or
 other people are around.
 Mower carry children even with
 blades off.
 Always keep front and back doors
 and hitch locked
 Always use safety devices (guards,
 shields, sensors, etc.) in place
 and working
 Remove objects that could be
 thrown by the blades.
 *Trained operators only

START/DRIVE PROCEDURE
 -Engage parking brake
 -Disengage mower deck drive
 -Move control handles to neutral position
 -Start Engine
 -Release parking brake
 -Adjust forward or reverse with hydro control levers

METALCAST OF MICHIGAN
 MADE IN USA
 MARYVILLE, WI

1 1f 2 2f 3 3f 4 4f
 1 1f 2 2f 3 3f 4 4f

REPLACEMENT DECALS AND INFORMATION PLATES

Ref. No.	Part No.	Description
1	483402	Decal, Belt Cover
2	483405	Decal, Warning
3	483425	Decal, ROPS
4	483505	Decal, Spinning Blades
5	481568	Decal, Traction Control
6	483633	Decal, Seat Replacement
7	483494	Decal, 48 Commercial
	483495	Decal, 52 Commercial
8	483406	Decal, Knives
9	483632	Decal, Adjustment SFZ
	*483502	Decal, Adjustment SFZ
10	483499	Decal, Control Panel
11	483501	Decal, Front SFZ
12	483467	Decal, Cutting Height

* Used on machines with a serial number in the following range only. D1500001 to D1500047.

ELECTRICAL SCHEMATIC - FREEDOM Z

