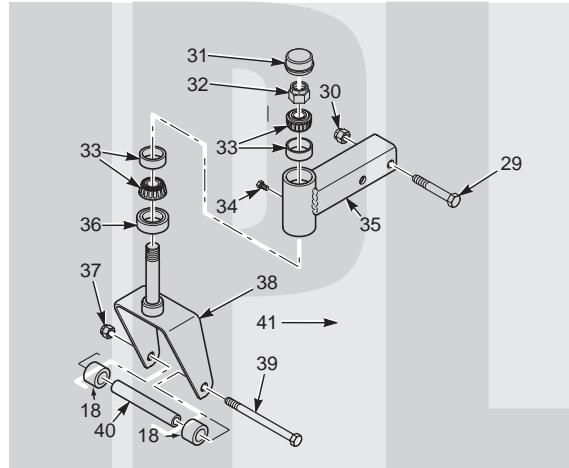


SCAG[®]

POWER EQUIPMENT



MODEL STT

ILLUSTRATED PARTS LIST

THIS MANUAL CONTAINS THE ILLUSTRATED PARTS LIST FOR MODELS:

STT52V-27CH	with a serial number of C7300001 to C7399999
STT61V-27CH	with a serial number of C7400001 to C7499999
STT61V-27CH-NS	with a serial number of C7500001 to C7599999
STT61V-27CH-SS	with a serial number of C7600001 to C7699999
STT61V-27KA	with a serial number of C7700001 to C7799999
STT61V-27KA-SS	with a serial number of C7800001 to C7899999
STT61V-29DFI-SS	with a serial number of C7900001 to C7999999
STT61V-35BVAC-SS	with a serial number of C8300001 to C8309999
STT61V-35BV-SS	with a serial number of C8000001 to C8099999
STT-29DFI-SS	with a serial number of C8100001 to C8109999
STT-35BVAC-SS	with a serial number of C8400001 to C8499999
STT-35BV-SS	with a serial number of C8200001 to C8299999
SMT-52V	with a serial number of C8500001 to C8599999
SMT-61V	with a serial number of C8600001 to C8699999
SMT-61V (BVAC, BV)	with a serial number of C8700001 to C8799999
SMST-72A	with a serial number of C9000001 to C9099999



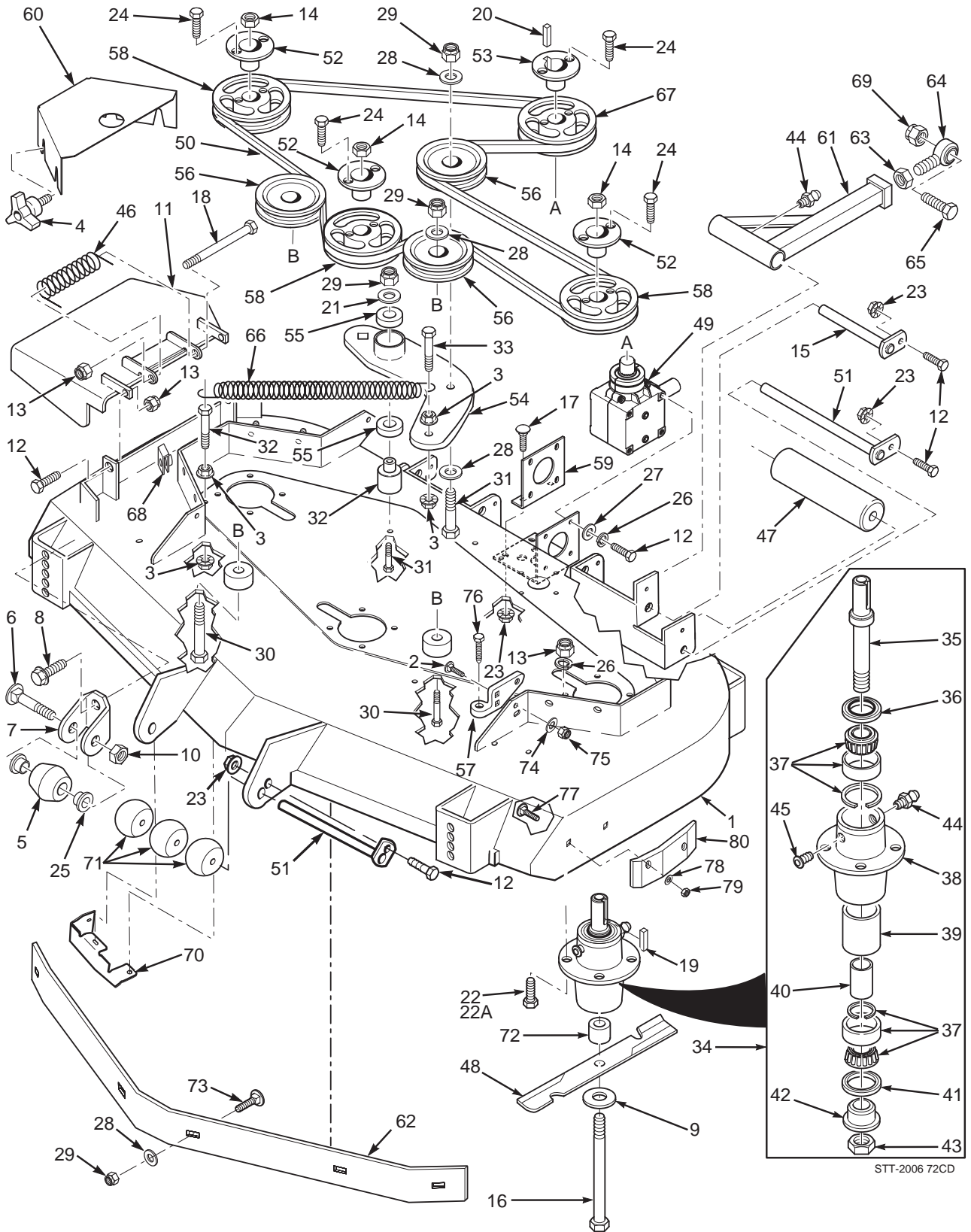
ILLUSTRATED PARTS LIST TABLE OF CONTENTS

SUBJECT	PAGE
STT52V, STT61V Cutter Deck	2-3
STT72A Cutter Deck	4-5
Cutter Deck Controls	6-7
Sheet Metal Components	8-9
STT Roll Over Protection System with out Suspension Seat	10-11
STT Roll Over Protection System with Suspension Seat	12-13
Deck Drive Components	14-15
Engine and Attaching Parts (Kohler)	16-17
Engine and Attaching Parts (Kawasaki 27HP, 29DFI & 35BVAC, 35BV)	18-19
Brake and Steering Components	20-21
Fuel and Hydraulic System	22-23
Fuel and Hydraulic System (Kawasaki 29DFI)	24-25
Hydraulic Pump (BDP-16A)	26-27
Hydraulic Pump (BDP-16 w/Cooling Fan)	28-29
Electrical System (Kohler & Briggs & Stratton 35BVAC)	30-31
Electrical System (Kawasaki 27HP & Briggs & Stratton 35BV)	32-33
Electrical System (Kawasaki 29DFI)	34-35
Replacement Decals	36-37
Electrical Schematic (Kohler)	38
Electrical Schematic (Kawasaki 27HP)	39
Electrical Schematic (Kawasaki 29DFI)	40
Electrical Schematic (Briggs & Stratton 35BVAC)	41
Electrical Schematic (Briggs & Stratton 35BV)	42

52V & 61V CUTTER DECKS

Ref. Part No.	Part No.	Description	52	61	Ref. Part No.	Part No.	Description	52	61
1	461859	Cutter Deck Velocity Plus	x		44	48114-04	Grease Fitting	x	x
	461863	Cutter Deck Velocity Plus		x	45	48677	Relief Fitting, Tapered Spindle	x	x
2	04003-40	Bolt, Carriage 7/16-14 x 1-1/4"	x	x	46	483378	Spring, Discharge Chute	x	x
3	04019-04	Nut, Hex Serrated Flange 3/8-16	x	x	47	482295	Wheel, Anti-Scalp	x	x
4	481625-01	Wing nut, 3/8-16	x	x	48	482878	Cutter Blade, 18"	x	
5	481632	Anti-Scalp Wheel	x	x		482879	Cutter Blade, 21"		x
6	04003-26	Bolt, Carriage 3/8-16 x 4"	x	x		482881	Cutter Blade, 21" (BV, BVAC Only)		x
7	422478	Anti-Scalp Wheel Bracket	x	x	49	482486	Gearbox Assembly, Deck Drive	x	x
8	04017-27	Bolt, Hex Serrated Flange 3/8-16 x 1"	x	x	50	482281	Belt, Cutter Deck Drive	x	
9	04043-06	Flatwasher, 5/8" Hardened	x	x		481558	Belt, Cutter Deck Drive		x
10	04021-05	Locknut, 3/8-16 Center Lock	x	x	51	45944	Roller Shaft	x	x
11	461845	Discharge Chute	x		52	48926	Tapered Hub, 1-1/8" Bore	x	x
	461846	Discharge Chute		x	53	48141	Tapered Hub, 1" Bore	x	x
12	04001-11	Bolt, Hex Head 5/16-18 x 1-3/4" - Front	x	x	54	461842	Idler Arm, Cutter Deck	x	x
	04001-12	Bolt, Hex Head 5/16-18 x 1-1/2" - Rear	x	x	55	48224	Bearings, Ball	x	x
13	04021-22	Nut, Hex Elastic Stop 5/16-18 Grade 8	x	x	56	483215	Pulley, Idler	x	x
14	04020-09	Nut, 5/8-11 UNC	x	x	57	461929	Lever Assembly, Deck Level (Incl. 77)	x	x
15	451240	Push Arm Shaft	x	x	58	482744	Pulley, 5.75 O.D. (52')	x	
16	04001-41	Bolt, Hex Head 5/8-11 x 9-1/2"	x	x		482745	Pulley, 6.35 O.D. (61")		x
17	04003-12	Bolt, Carriage 5/16-18 x 3/4"	x	x	59	422426	Mounting Plate, Gearbox	x	x
18	04001-108	Bolt, Hex Head 5/16-18 x 4-1/2"	x	x	60	422412	Belt, Cover	x	
19	04063-08	Key, 1/4 x 1/4 x 2"	x	x		424325	Belt, Cover		x
20	04063-01	Key, 1/4 x 1/4 x 1-1/4"	x	x	61	461516	Pusharm (incl. items 44, 63 & 64)	x	x
21	04043-04	Flatwasher, 3/8-.39 x .938 x .105 HD	x	x	62	43590	Spacer, Spindle Bottom	x	x
22	04001-176	Bolt, Hex Head 5/16-18 x 1-3/4"	x	x	63	04020-16	Nut, Hex Head 5/8-18 UNF	x	x
23	04019-03	Nut, Hex Serrated Flange 5/16-18	x	x	64	48763	Rod End, 5/8" Male RH Thread	x	x
24	04001-172	Bolt, Hex Head 1/4-20 x 1" Grade 8	x	x	65	04001-79	Bolt, Hex Head 5/8-11 x 4-1/2"	x	x
25	48100-15	Bushing, .376 I.D. Oilite	x	x	66	481597	Spring, Cutter Deck	x	x
26	04030-03	Lockwasher, 5/16"	x	x	67	482747	Pulley, 6.95 O.D.	x	
27	04040-15	Flatwasher, 5/16" (.375 x .875 x .083)	x	x		482746	Pulley, 6.75 O.D.		x
28	04041-07	Flatwasher, 3/8" (.391 x .938 x .105)	x	x	68	04110-03	U-Nut, 3/8-16	x	x
29	04021-09	Nut, Hex Elastic Stop 3/8-16	x	x	69	04021-13	Nut, Hex Elastic Stop 5/8-11	x	x
30	04001-62	Bolt, Hex Head 3/8-16 x 3-1/4"	x	x	70	424208	Discharge Baffle 52V	x	
31	04001-54	Bolt, Hex Head 3/8-16 x 3"	x	x	71	424209	Discharge Baffle 61V		x
32	04001-20	Bolt, Hex Head 3/8-16 x 1-1/2"	x	x	72	43681	Pivot, Idler - Short	x	x
33	04001-136	Bolt, Hex Head 3/8-16 x 1-1/2" Grade 8	x	x	73	424174	Baffle, Custom Cut 52V	x	
34	461663	Spindle Assembly	x	x		424164	Baffle, Custom Cut 61V		x
35	43589	Spindle Shaft	x	x	74	04003-23	Bolt, Carriage 3/8-16 x 1"	x	x
36	481024	Seal, Top	x	x	75	04040-11	Flatwasher, 7/16-.500 x 1.25 x .083	x	x
37	481022	Bearing Assembly	x	x	76	04021-11	Nut, Elastic Stop 7/16-14	x	x
38	43644	Spindle Housing	x	x	77	483167	Bolt, Deck Adjust	x	x
39	43312	Spacer, Outside	x	x	78	04003-12	Bolt, Carriage 5/16-18 x 3/4"	x	x
40	43296	Spacer, Inside	x	x	79	04040-04	Flatwasher, 5/16"	x	x
41	481025	Seal, Bottom	x	x	80	04021-04	Nut, Center Lock 5/16-18	x	x
42	43297	Spindle Bushing, Bottom	x	x	81	483176	Wear Pad	x	x
43	481035	Nut, Special 1 - 1/16-18	x	x	82	48038	Wheel, Anti-Scalp	x	x

72A CUTTER DECK

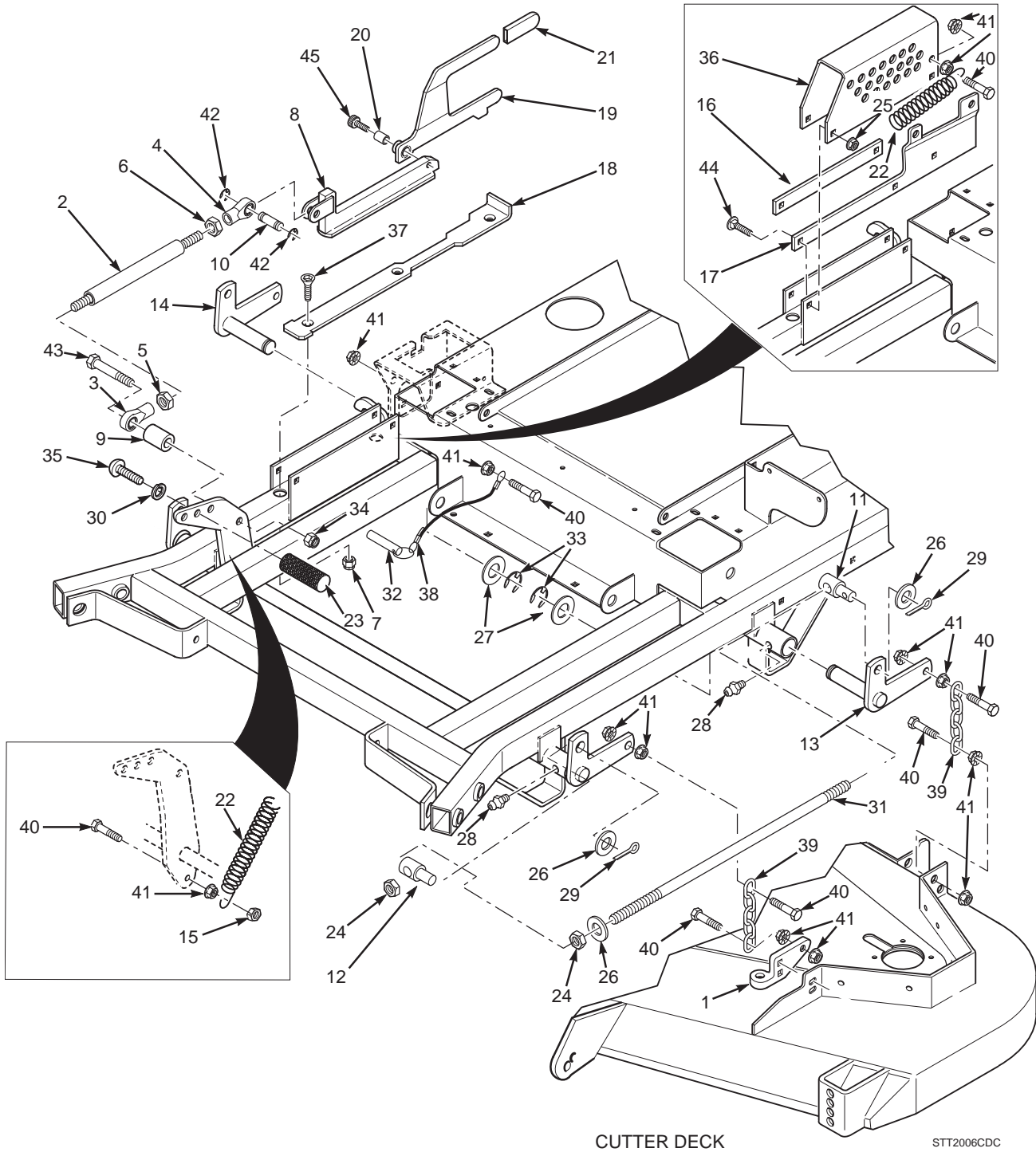


STT-2006 72CD

72A CUTTER DECK

Ref. Part No. No.	Description	Ref. Part No. No.	Description		
1	461865	Cutter Deck, 72" Advantage (Includes Decals)	42	43297	Spindle Bushing, Bottom
2	04003-40	Bolt, Carriage 7/16-14 x 1-1/4"	43	481035	Nut, Special 1 - 1/16-18
3	04019-04	Nut, Hex Serrated Flange 3/8-16	44	48114-04	Grease Fitting
4	481625-01	Wing Nut, 3/8-16	45	48677	Relief Fitting, Tapered Spindle
5	481632	Anti-Scalp Wheel	46	482245	Spring, Discharge Chute
6	04003-26	Bolt, Carriage 3/8-16 x 4"	47	48038	Guide, Roller
7	422478	Anti-Scalp Wheel Bracket	48	482882	Cutter Blade, 24.5" 72"
8	04017-27	Bolt, Hex Serrated Flange 3/8-16 x 1"	49	482486	Gearbox Assembly, Deck Drive
9	04043-06	Flatwasher, 5/8" Hardened	50	481980	Belt, Cutter Deck Drive, 72"
10	04021-05	Locknut, 3/8-16 Center Lock	51	45944	Roller Shaft
11	461296	Discharge Chute, 72" Adv.	52	48926	Tapered Hub, 1-1/8" Bore
12	04001-12	Bolt, Hex Head 5/16-18 x 1.75" - Front	53	48141	Tapered Hub, 1" Bore
	04001.11	Bolt, Hex Head 5/16-18 x 1.50" - Rear	54	461842	Idler Arm, Cutter Deck
13	04021-22	Nut, Hex Elastic Stop 5/16-18 Grade 8	55	48224	Bearings, Ball
14	04020-09	Nut, 5/8-11 UNC	56	483215	Pulley, Idler
15	451240	Push Arm Shaft	57	461929	Lever Assembly, Deck Level (Incl. 77)
16	04001-41	Bolt, Hex Head 5/8-11 x 9.50"	58	482747	Pulley, 6.95 O.D. - 72"
17	04003-12	Bolt, Carriage 5/16-18 x .75"	59	422426	Mounting Plate, Gearbox
18	04001-154	Bolt, Hex Head 5/16-18 x 4.75"	60	422677	Belt Cover, LH - 72"
19	04063-08	Key, 1/4 x 1/4 x 2"		422708	Belt Cover, RH - 72"
20	04063-01	Key, 1/4 x 1/4 x 1.25"	61	461516	Pusharm (includes items 44, 63 & 64)
21	04043-04	Flatwasher, 3/8-.39 x .938 x .105 HD	62	423795	Baffle, Custom Cut 72A
22	04001-11	Bolt, Hex Head 5/16-18 x 1-3/4"	63	04020-16	Nut, Hex Head 5/8-18 UNF
23	04021-10	Nut, Hex Serrated Flange 5/16-18	64	48763	Rod End, 5/8" Male RH Thread
24	04001-172	Bolt, Hex Head 1/4-20 x 1" Grade 8	65	04001-79	Bolt, Hex Head 5/8-11 x 4-1/2"
25	48100-15	Bushing, .376 I.D. Oilite	66	481597	Spring, Cutter Deck
26	04030-03	Lockwasher, 5/16"	67	482745	Pulley, 6.35 O.D. - 72"
27	04040-15	Flatwasher, 5/16" (.375 x .875 x .083)	68	04110-03	U-Nut, 3/8-16
28	04041-07	Flatwasher, 3/8" (.391 x .938 x .105)	69	04021-13	Nut, Hex Elastic Stop 5/8-11
29	04021-09	Nut, Hex Elastic Stop 3/8-16	70	423958	Discharge Baffle 72"
30	04001-62	Bolt, Hex Head 3/8-16 x 3-1/4"	71	482295	Wheel, Anti-Scalp
31	04001-54	Bolt, Hex Head 3/8-16 x 3"	72	43590	Spacer, Spindle Bottom
32	43681	Pivot, Idler - Short	73	04003-23	Bolt, Carriage 3/8-16 x 1"
33	04001-136	Bolt, Hex Head 3/8-16 x 1.50" Grade 8	74	04040-11	Flatwasher, 7/16-.500 x 1.25 x .083
34	461663	Spindle Assembly	75	04021-11	Nut, Elastic Stop 7/16-14
35	43589	Spindle Shaft	76	483167	Bolt, Deck Adjust
36	481024	Seal, Top	77	04003-12	Bolt, Carriage 5/16-18 x 3/4"
37	481022	Bearing Assembly	78	04040-04	Flatwasher, 5/16"
38	43644	Spindle Housing	79	04021-04	Nut, Center Lock 5/16-18
39	43312	Spacer, Outside	80	483174	Wear Pad
40	43296	Spacer, Inside			
41	481025	Seal, Bottom			

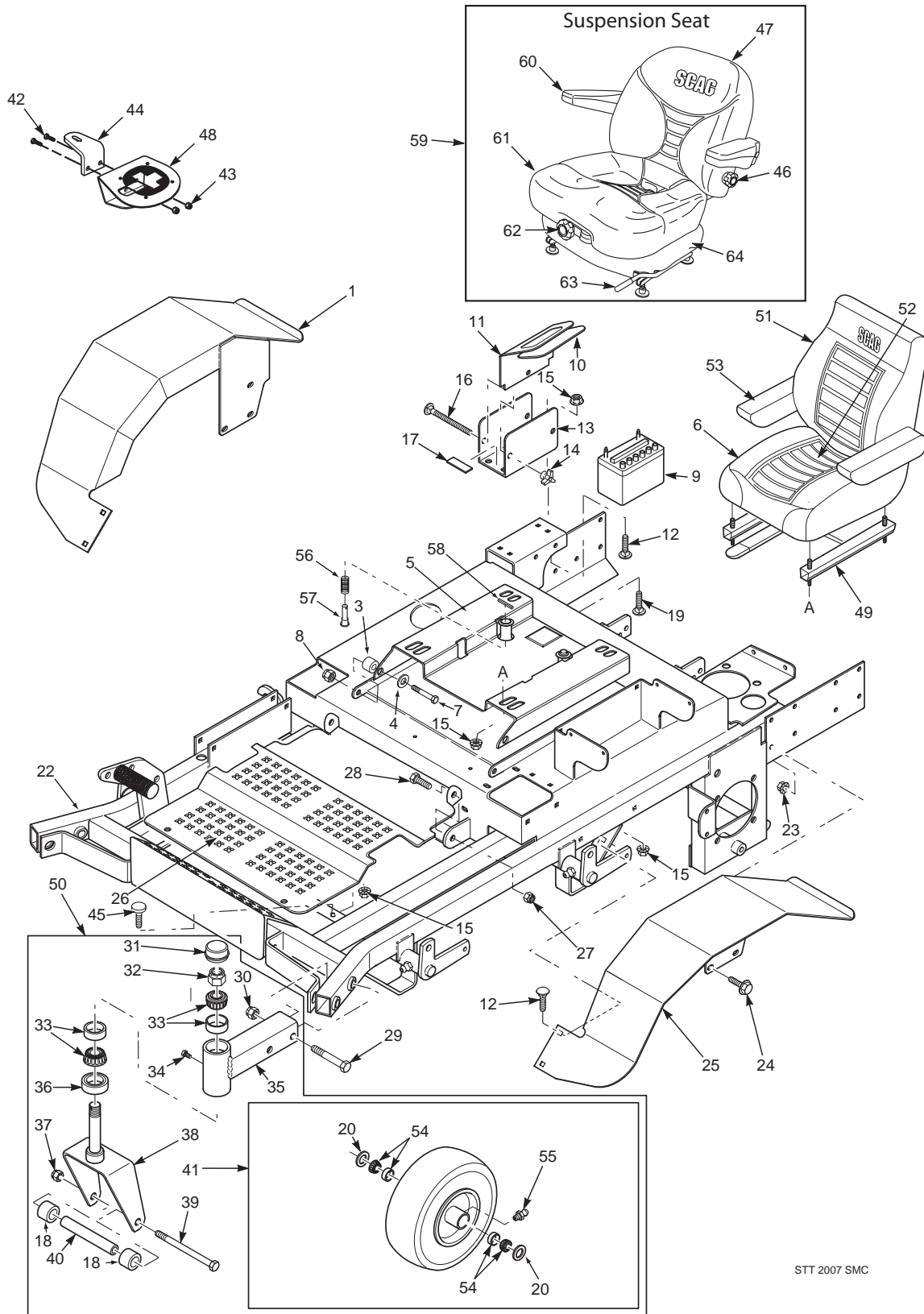
CUTTER DECK CONTROLS



CUTTER DECK CONTROLS

Ref. No.	Part No.	Description
1	461929	Lever Assembly, Deck Level
2	481764	Link, Deck Lift
3	481765	Rod End, Female - 1/2-20 RH
4	481766	Rod End, Female - 1/2-20 LH
5	04020-27	Nut, Jam 1/2-20 RH
6	04020-28	Nut, Jam 1/2-20 LH
7	04021-09	Nut, 3/8-16 Elastic Stop
8	482429	Slide Weldment, Height Adjustment
9	43391	Spacer, Decklift Pedal
10	43487	Pin, Decklift
11	43526	Swivel Joint, LH
12	43527	Swivel Joint, RH
13	45904	Bellcrank Weldment, LH Rear
14	45905	Bellcrank Weldment, RH Rear
15	04021-05	Locknut, 3/8-16 Center Lock
16	422381	Guide, Short
17	423509	Guide, Long
18	422346	Lockplate, Decklift
19	46975	Deck Latch (Includes items 20& 21)
20	48100-14	Bushing, .502 ID.
21	481428	Grip, Deck Latch
22	481598	Spring, Helper (61" & 72" Cutter Decks Only)
23	424504	Foot Pedal, Height Adjustment
24	04020-09	Nut, Hex 5/8-11
25	04019 -03	Nut, Hex Serrated Flange 5/16-18
26	04040-09	Flatwasher, 5/8" (.656 x 1.312 x .095)
27	04041-14	Flatwasher, 1" (1.062 x 1.50 x .048)
28	48114-04	Grease Fitting
29	04061-07	Cotter Pin, 3/16 x 1"
30	04030-07	Lockwasher, 5/8"
31	04004-44	Stud, 5/8-11 x 22.0"
32	04067-09	Ring Pin, 1/2 x 3.06"
33	04050-08	Ring, Retaining 1" External "E"
34	04021-07	Nut, Hex Elastic Stop 1/2-13
35	04105-01	Capscrew, 5/8-11 x 1-1/2"
36	423463	Bracket, Cutting Height Adjustment
37	04014-03	Screw, Cap 5/16-18 x 3" FHHS
38	481547	Lanyard, Deck Height Pin
39	48540	Chain
40	04001-20	Bolt, Hex Head 3/8-16 x 1-1/2"
41	04019-04	Nut, Hex Serrated Flange 3/8-16
42	04050-10	Ring, Retaining 1/2" External "E"
43	04001-74	Bolt, Hex Head 1/2-13 x 3"
44	04003-04	Bolt, Carriage 5/16-18 x 1"
45	04009-02	Bolt, Shoulder 1/2 x 3/4"

SHEET METAL COMPONENTS

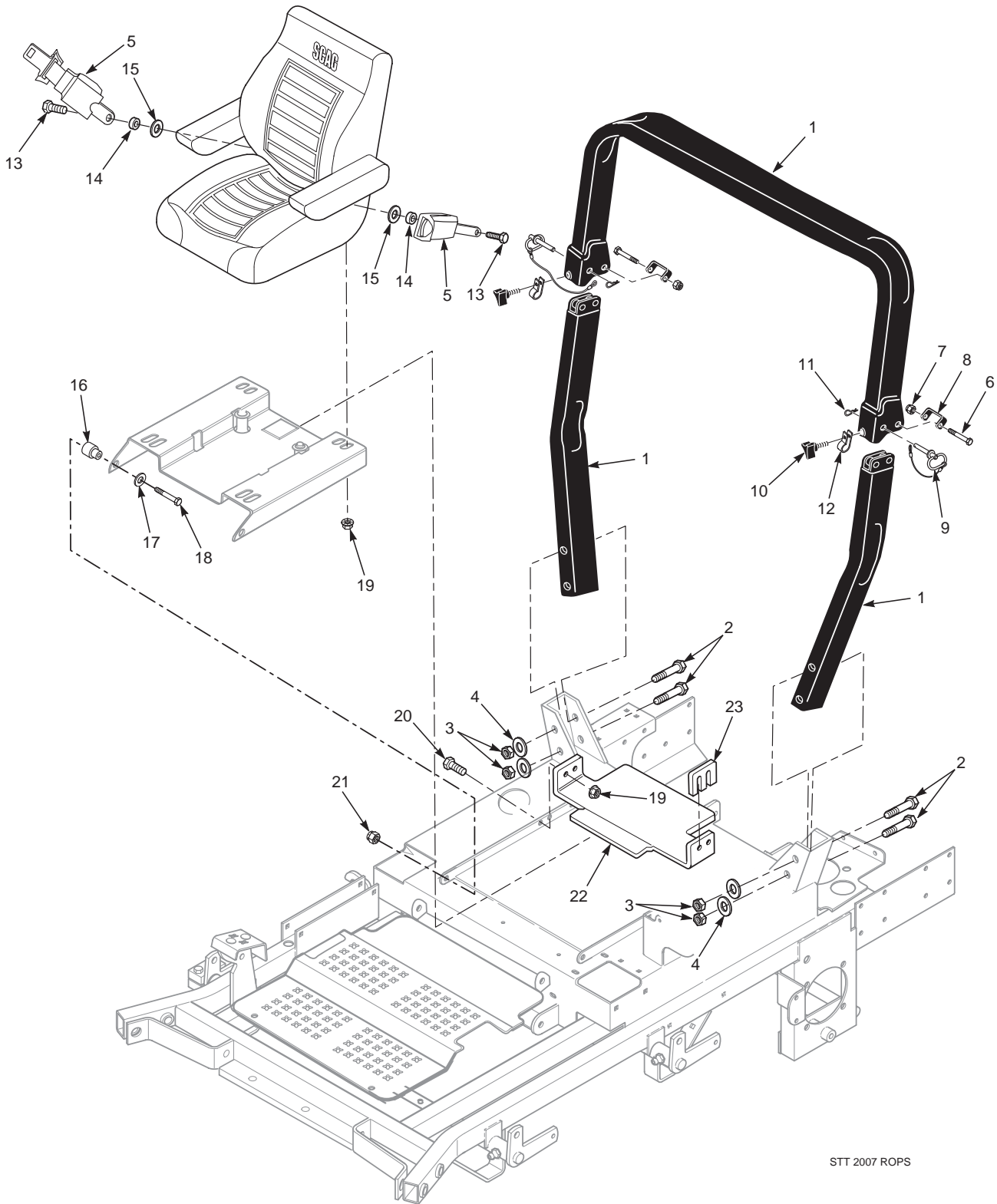


STT 2007 SMC

SHEET METAL COMPONENTS

Ref. No.	Part No.	Description	Ref. No.	Part No.	Description
1	451481	Fender Weldment, RH	45	482943	Lumbar Kit
2	04001-09	Bolt, Hex Head, 5/16-18 x 1, Zinc		482948	Knob Kit
3	43606	Spacer	46	48566	Cable, Seat Stop
4	04041-07	Flatwasher, 3/8-.391 x .938 x .105	47	482940	Back Cushion Kit
5	461967	Seat Plate Weldment	48	9240	Cup Holder Assembly
6	483384	Seat Assembly w/armrest and seat belt	49	482502	Seat Adjustment, Track Set
7	04001-45	Bolt, Hex Head 3/8-16 x 2.0"	50	461907	Caster Wheel Assy (Inc. 31 thru 43) 52V
8	04021-09	Nut, Elastic Stop 3/8-16		461908	Caster Wheel Assy (Inc. 31 thru 43) 61V (LH)
9	*	Battery (not avail. through Scag)		461909	Caster Wheel Assy (Inc. 31 thru 43) 61V (RH)
10	48903	Pad, Battery Cover		461910	Caster Wheel Assy (Inc. 31 thru 43) 72A (LH)
11	421274	Cover, Battery		461911	Caster Wheel Assy (Inc. 31 thru 43) 72A (RH)
12	04003-12	Bolt, Carriage 5/16-18 x 3/4"	51	482614	Back Cushion Cover
13	423308	Plate, Battery Box	52	482615	Seat Cushion Cover
14	04029-01	Wing Nut, 1/4-20 x 3/4"	53	482618	Arm Rest, Right Hand
15	04019-03	Nut, Hex Serrated Flange 5/16-18		482617	Arm Rest, Left Hand
16	04003-01	Bolt, Carriage 1/4-20 x 6"		482616	Arm Rest Cover
17	48661	Rubber Pad	54	482621	Bearing w/ Race
18	43584	Spacer, Caster Wheel	55	48114-10	Grease Fitting
19	04003-04	Bolt, Carriage 5/16-18 x 1"	56	481389	Spring, Seat
20	482622	Seal	57	43462	Pin Retainer, Spring
21	04021-09	Lock Nut, 3/8-16, Elast. Stop	58	04060-01	Roll Pin, Spring 5/32 x 3/4"
22	461991	Main Frame	59	483428	Suspension Seat Assembly w/seat belt
23	04019-04	Nut, Hex Serrated Flange 3/8-16	60	482950	Armrest Only
24	04017-27	Screw, Hex Serrated Flange 3/8-16 x 1"		482945	Armrest Assembly Kit, LH
25	451480	Fender Weldment, LH		482946	Armrest Assembly Kit, RH
26	423489	Foot Plate	61	482941	Seat Cushion Kit
27	04021-09	Nut, Hex Elastic Stop 3/8-16			Seat Drain Kit (Included with Seat Cushion)
28	04001-19	Bolt, Hex Head 3/8-16 x 1"	62	482944	Weight Adjustment Kit
29	04001-125	Bolt, Hex Head 5/8-11 x 4"		482948	Knob Kit
30	04021-13	Nut, Hex Elastic Stop 5/8-11	63	482952	Seat Adjustment, Track Set
31	481559	Cap, Grease	64	482942	Shock Absorber Kit
32	04021-20	Nut, Hex Elastic Stop 1.0-14			
33	481657	Bearing W/Race			
34	482028-01	Plug, 1/4-28 THD Form			
35	451450	Extention Weldment, Caster 52A			
	451825	Extention Weldment, Caster 61A (LH)			
	451451	Extention Weldment, Caster 61A (RH)			
	451452	Extention Weldment, Caster 72A (LH)			
	451453	Extention Weldment, Caster 72A (RH)			
36	481025	Seal, 2.00 OD. x 1.625 Bore			
37	04021-07	Nut, Hex Elastic Stop 1/2-13			
38	45934	Yoke Weldment, Caster (52A)			
	451416	Yoke Weldment, Caster (61A & 72A)			
39	04001-134	Bolt, Hex Head 1/2-13 x 7-1/2" (52A)			
	04001-167	Bolt, Hex Head 1/2-13 x 9-1/2" (61A & 72A)			
40	43581	Sleeve, Caster Wheel (52A)			
	43583	Sleeve, Caster Wheel (61A, 72A)			
41	9277	Wheel Assy, 52A (Inc.items 20, 54, 55)			
	9278	Wheel Assy, 61A, 72A (Inc. 20, 54, 55)			
42	04001-01	Bolt, Hex Head 1/4-20 x 3/4"			
43	04001-01	Bolt, Hex Head 1/4-20 x 3/4"			
44	423674	Mounting Bracket, STT Cup Holder			

STT ROLL-OVER PROTECTION SYSTEM - WITHOUT SUSPENSION SEAT

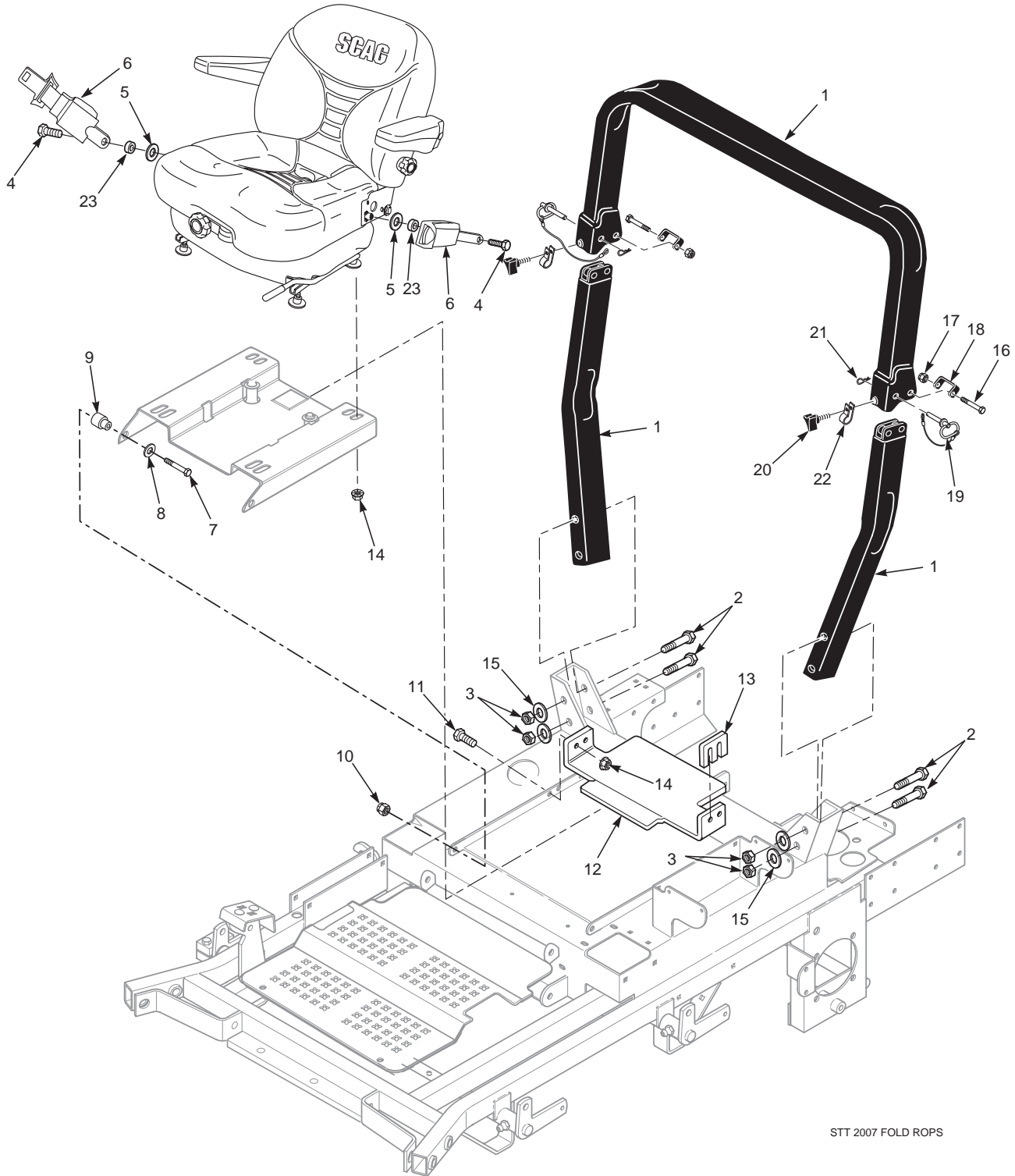


STT 2007 ROPS

STT ROLL-OVER PROTECTION SYSTEM - WITHOUT SUSPENSION SEAT

Ref. Part No. No.	Description
1 9514	STT, ROPS Accessory (incl. all items below)
2 04001-82	Bolt, Hex Head 1/2-13 x 4-1/2"
3 04021-19	Nut, Center Lock 1/2-13
4 04040-13	Flatwasher, 1/2-.562 x 1.375 x .109
5 483594	Retractable Seat Belt
6 04001-145	Bolt, Hex Head 1/2-13 x 3-1/2"
7 04021-19	Nut, Center Lock 1/2-13
8 424407	Bracket, Stop
9 483262	Pin
10 481625-03	Thumb Screw, 5/16-18 NC x 3-4"
11 04062-06	Hair Pin, Cotter
12 483265	Clamp
13 04001-178	Bolt, Hex Head 7/16-20 x 1"
14	Spacer
15 04040-11	Flatwasher, 7/16-.500 x 1.25 x .083
16 43606	Sleeve, Seat Base Mounting
17 04041-07	Flatwasher, 3/8-.391 x .938 x .105
18 04001-45	Bolt, Hex Head 3/8-16 x 2"
19 04019-03	Nut, Serrated Flange 5/16-18
20 04001-09	Bolt, Hex Head 5/16-18 x 1"
21 04021-09	Nut, Elastic Stop 3/8-16
22 461968	Bracket, Seat Hold Down w/Decal
23 424193	Spacer, Seat Hold Down

STT ROLL-OVER PROTECTION SYSTEM - WITH SUSPENSION SEAT

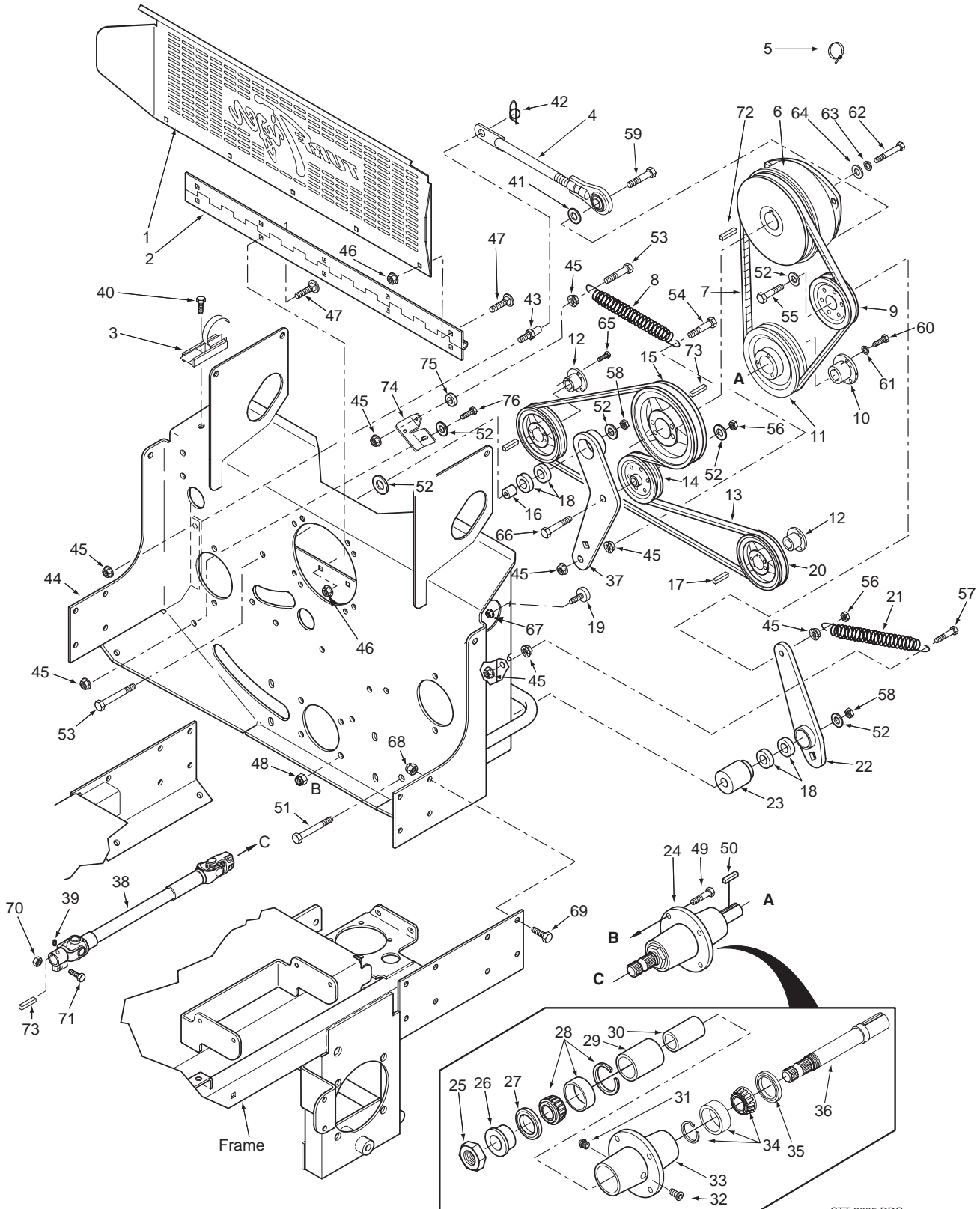


STT 2007 FOLD ROPS

STT ROLL-OVER PROTECTION SYSTEM - WITH SUSPENSION SEAT

Ref. Part No.	Part No.	Description
1	9514	STT, ROPS Accessory (incl. all items below)
2	04001-82	Bolt, Hex Head 1/2-13 x 4-1/2"
3	04021-19	Nut, Center Lock 1/2-13
4	04001-178	Bolt, Hex Head 7/16-20 x 1"
5	04040-11	Flatwasher, 7/16-.500 x 1.25 x .083
6	482055	Retractable Seat Belt
7	04001-45	Bolt, Hex Head 3/8-16 x 2"
8	04041-07	Flatwasher, 3/8-.391 x .938 x .105
9	43606	Sleeve, Seat Base Mounting
10	04021-09	Nut, Elastic Stop 3/8-16
11	04001-09	Bolt, Hex Head 5/16-18 x 1"
12	461968	Bracket, Seat Hold Down with Decal
13	424193	Spacer, Seat Hold Down
14	04019-03	Nut, Serrated Flange 5/16-18
15	04040-13	Flatwasher, 1/2-.562 x 1.375 x .109
16	04001-145	Bolt, Hex Head 1/2-13 x 3-1/2"
17	04021-19	Nut, Center Lock 1/2-13
18	424407	Bracket, Stop
19	483262	Pin
20	481625-03	Thumb Screw, 5/16-18 NC x 3-4"
21	04062-06	Hair Pin, Cotter
22	483265	Clamp
23		Spacer

DECK DRIVE COMPONENTS



STT 2005 DDC

DECK DRIVE COMPONENTS

Ref. Part No. No.	Description	Ref. Part No. No.	Description
1	423925 Belt Guard, Rear	482438	Driveshaft (Liquid Cooled Engine)
2	481531 Hinge, Belt Guard	39 04012-08	Set Screw, 3/8-16 x 3/4" Torx Socket
3	481309 Latch, Hood	40 04011-11	Screw, #10-32 x .56
4	482845 Rod Assembly, Clutch Anti-Rotation	41 04041-07	Flatwasher, 3/8-.391 x .938 x .105
5	48030-09 Clamp, Cable	42 04069-01	Pin, Rue Cotter 3/8 Dia.
6	461661 Clutch, Ogura GT-3.5	43 43507	Stud, Anti Rotation
	461662 Clutch, Ogura GT-5 (35BVAC, 35BV)	43651	Stud, Anti Rotation (BV only)
7	482876 Belt, Deck Drive	44 461800	Pump Mounting Plate Weldment (Air Cooled)
8	483088 Spring, Transmission Idler	461801	Pump Mounting Plate Weldment (Liquid Cooled)
9	48181 Pulley, Idler 5" Dia.	45 04019-04	Nut, Serrated Flange 3/8-16
10	481536 Tapered Hub, 1" Bore	46 04019-02	Nut, Serrated Flange 1/4-20
11	482949 Pulley, 6.70 Tapered Bore	47 04003-07	Bolt, Carriage 1/4-20 x 1/2"
12	481884 Tapered Hub, 17mm Bore	48 04021-22	Nut, Elastic Stop 5/16-18 Grade 8
13	483165 Belt, Pump Drive STT	49 04001-176	Bolt, Hex Head 5/16-18 x 1-3/4" Grade 8
	483166 Belt, Pump Drive (29DFI, 35BV, 35BVAC)	50 04063-06	Key, 1/4 x 1/4 x 1-1/2"
14	483214 Pulley, Idler 4" Dia.	51 04001-171	Bolt, Hex Head 3/8-16 x 4-1/2" Grade 8 Black
15*	483082 Pulley, 4.55 Dia.-1.125 Bore	52 04043-04	Washer, 3/8 Hardened
	483083 Pulley, 5.15 Dia.-1.125 (29DFI)	53 04001-135	Bolt, Hex Head 3/8-16 x 1-3/4" Grade 8 Black
16	43631 Spacer, Idler Bearing	54 04001-136	Bolt, Hex Head 3/8-16 x 1-1/2" Grade 8 Black
17	04063-14 Key, 5.0 x 5.0 x 25mm	55 04001-170	Bolt, Hex Head 3/8-16 x 2-1/2" 1.5 Thread Grd.8
18	48224 Ball Bearing	56 04021-05	Nut, Center Lock 3/8-16
19	481284 Bumper, Rubber	57 04001-136	Bolt, Hex Head 3/8-16 x 1-1/2" Grade 8 Black
20	482745 Pulley, (29DFI & 35BV, 35BVAC Only)	58 04021-09	Nut, Elastic Stop 3/8-16
21	482667 Spring, PTO	59 04001-45	Bolt, Hex Head 3/8-16 x 2"
22	461609 Idler Arm Weldment, PTO Drive	60 04001-109	Bolt, Hex Head 1/4-20 x 1-3/8"
23	43632 Pivot, Idler PTO	61 04030-02	Lockwasher, 1/4 Spring
24	461697 Spindle Assembly, Deck Drive	62 04001-101	Bolt, Hex Head 7/16-20 x 2-1/2" UNF
25	481035 Nut, 1.06-18 Thread	63 04030-05	Lockwasher, 7/16 Spring
26	43297 Spindle Bushing, Bottom	64 04041-28	Flatwasher, 7/16-.469 x 1.75 x .25
27	481025 Seal, 2.0 OD x 1.625 Bore	65 04001-172	Bolt, Hex Head 1/4-20 x 1" Grade 8
28	481022 Roller Bearing Tapered	66 04001-21	Bolt, Hex Head 3/8-16 x 1-3/4"
29	43312 Spacer, Outside	67 04019-03	Nut, Serrated Flange 5/16-18
30	43296 Spacer, Inside	68 04021-09	Nut, Elastic Stop 3/8-16
31	48114-04 Grease Fitting, 1/4-28	69 04001-19	Bolt, Hex Head 3/8-16 x 1"
32	48677 Relief Fitting	70 04021-05	Nut, Center Lock 3/8-16
33	43644 Spindle Housing	71 04001-21	Bolt, Hex Head 3/8-16 x 1-3/4"
34	481022 Roller Bearing Tapered	72 04063-02	Key, 1/4 x 1/4 x 2-1/4"
35	481024 Seal, 2.0 OD x 1.5 Bore	73 04063-20	Key, 1/4 x 1/4 x 1"
36	43534 Shaft, Deck Drive	74 424138	Bracket
37	461608 Idler Arm Weldment, Pump Drive	75 43063	Spacer
38	482424 Driveshaft (Air Cooled Engine)	76 04001-19	Bolt, Hex Head 3/8-16 x 1"

15* For Briggs & Stratton Big Block Vanguard Engine, reference Service Parts Information Sheet found on the following page.



SERVICE PARTS INFORMATION SHEET 11

Part #: 485866 & 485867

Issue Date: 1/1/2017

PARTS AFFECTED: 485866 - Pulley, 5.35" Dia. - 1.125" Bore (STT)
485877 - Pulley, 5.67" Dia. - 1.125" Bore (STTII)

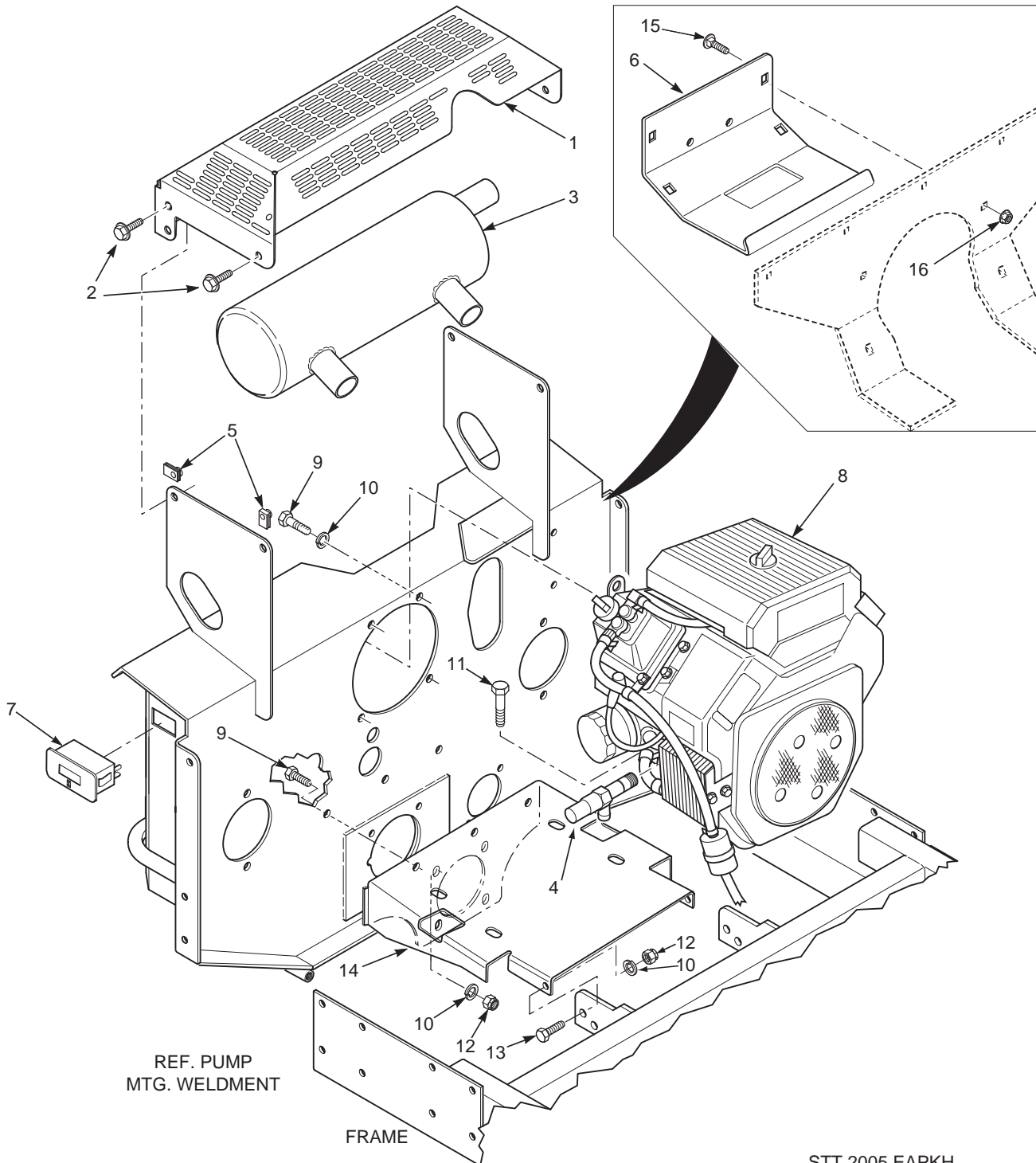
SITUATION: We have made a change to the pump drive pulley used on all STT (Turf Tiger) and STTII (Turf Tiger II) models equipped with the Briggs & Stratton Big Block Vanguard engine.

SOLUTION: When replacing the pump drive pulley on units equipped with the Briggs & Stratton Big Block Vanguard engine, use the part number listed below by machine serial number range.

SERIAL NUMBER RANGE: All new and sold machines with a serial number in the following ranges:

MODEL NO.	SERIAL NUMBER	PULLEY PART NUMBER
STT61A-31BV-SS	A6700001 to A6799999	485866
STT61A-35BV-SS	A8900001 to A8999999	485866
STT-35BV-SS	A9000001 to D8299999	485866
STT-31BV-SS	A9600001 to A9699999	485866
STT61V-35BV-SS	B7000001 to C8099999	485866
STT61V-35BVAC-SS	C0200001 to E5401775	485866
STT-35BVAC-SS	E5500001 to E5599999	485866
STT61V-35BVAC	F6300001 to K2299999	485866
STT-35BVAC	F6700001 to J0499999	485866
STT72V-35BVAC	K2700001 to K2799999	485866
STTII-61V-35BV	M0500001 to M0599999	485867
STTII-72V-35BV	M0900001 to M0999999	485867

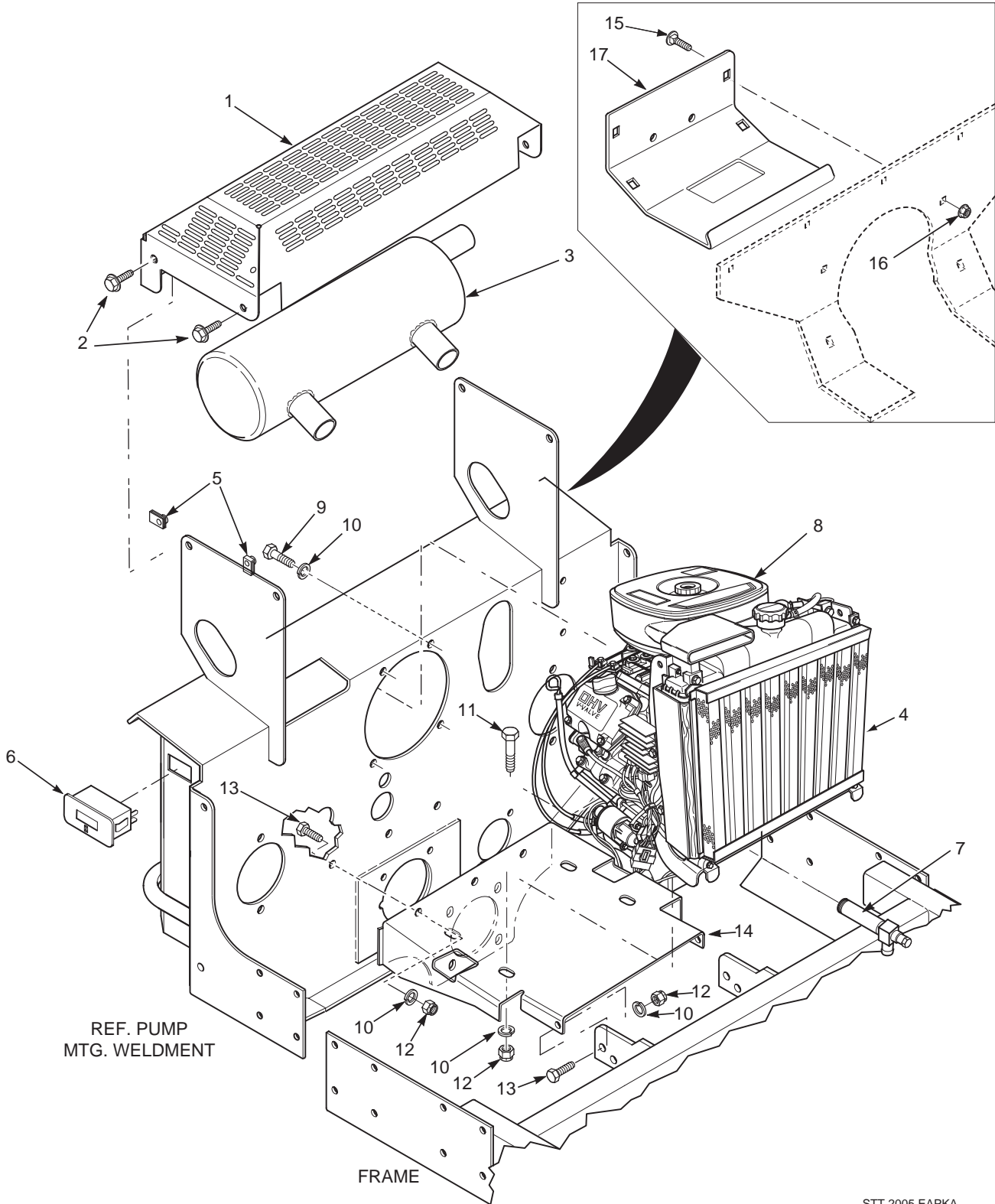
ENGINE AND ATTACHING PARTS - KOHLER



ENGINE AND ATTACHING PARTS - KOHLER

Ref. No.	Part No.	Description
1	422593	Muffler Guard
2	04017-05	Screw, Hex Serrated Flange 1/4-20 x 3/4"
3	*	Muffler, Part Of Engine (Available only through Kohler)
4	482510	Oil Drain Extension
5	04110-01	U-Nut, 1/4-20
6	424063	Rear Cover
7	483355	Hour Meter
8	482890	Engine, Kohler 27 CH (Available only through Kohler, Eng. Spec. PS-CH740-0041)
9	04001-19	Bolt, Hex Head 3/8-16 x 1"
10	04030-04	Lockwasher, 3/8" Spring
11	04001-21	Bolt, Hex Head 3/8-16 x 1-3/4"
12	04021-09	Nut, Hex Elastic Stop 3/8-16
13	04001-32	Bolt, Hex Head 3/8-16 x 1-1/4"
14	451459	Plate, Engine Mounting
15	04003-12	Bolt, Carriage 5/16-18 x 3/4"
16	04019-03	Nut, Hex Serrated Flange 5/16-18

ENGINE & ATTACHING PARTS - 27HP, 29HP-DFI KA, 35BVAC, 35BV

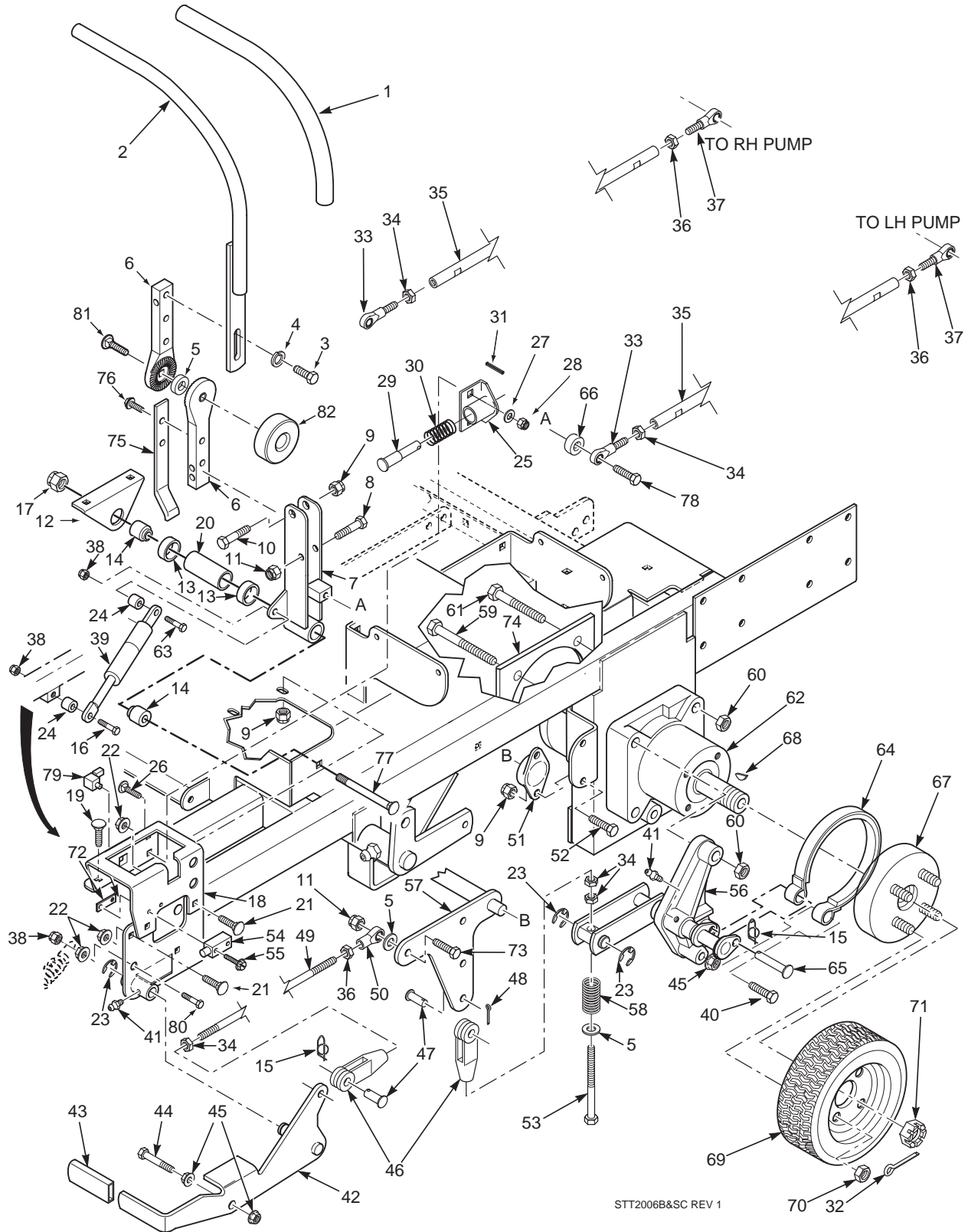


STT 2005 EAPKA

ENGINE & ATTACHING PARTS - 27HP, 29HP-DFI KA, 35BVAC, 35BV

Ref. No.	Part No.	Description
1	451378	Muffler Guard (Kawasaki)
	422593	Muffler Guard (35BV, 35BVAC Briggs & Stratton)
2	04017-05	Screw, Hex Serrated Flange 1/4-20 x 3/4"
3	482699	Muffler (Kawasaki)
	482860	Muffler (Briggs & Stratton)
4	451421	Screen Weldment, Radiator (Kawasaki Only)
5	04110-01	U-Nut, 1/4-20
6	483355	Hour Meter
7	482351	Oil Drain, 2.6" (Kawasaki Only)
	483017	Oil Drain, (BV Only)
8	482809	Engine, Kawasaki 27KA (Available only through Kawasaki)
	482810	Engine, Kawasaki 29KA-DFI (Available only through Kawasaki)
	483258	Engine, Briggs & Stratton 35HP V-Twin Air Cooled (Avail. only through B & S)
	483045	Engine, Briggs & Stratton 35HP V-Twin Liquid Cooled (Avail. only through B & S)
9	04002-18	Bolt, M10-1.50 x 25 Grade 8.8
10	04030-04	Lockwasher, 3/8" Spring
11	04001-21	Bolt, Hex Head 3/8-16 x 1-3/4"
12	04021-09	Nut, Hex Elastic Stop 3/8-16
13	04001-32	Bolt, Hex Head 3/8-16 x 1-1/4"
14	451454	Plate, Engine Mounting
15	04003-12	Bolt, Carriage 5/16-18 x 3/4"
16	04019-03	Nut, Hex Serrated Flange 5/16-18
17	424063	Rear Cover

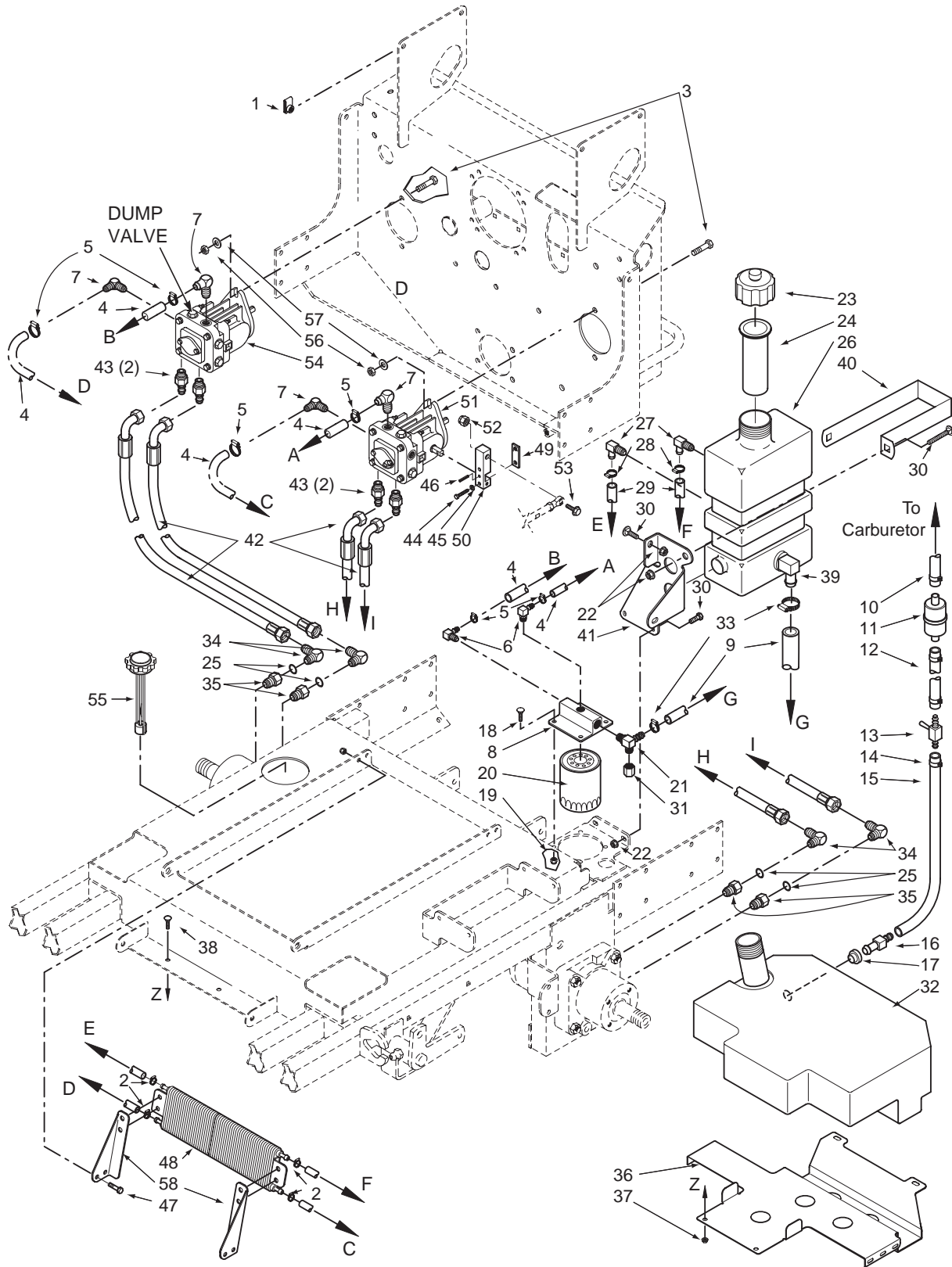
BRAKE AND STEERING COMPONENTS



BRAKE AND STEERING COMPONENTS

Ref. Part No. No.	Description	Ref. Part No. No.	Description
1 482340	Grip, Handle Bar	44 04001-22	Bolt, Hex Head 3/8-16 x 2-3/4"
2 461914	Handle Bar, LH (Includes item 1)	45 04019-04	Nut, Hex Serrated Flange 3/8-16
461923	Handle Bar, RH (Includes item 1)	46 48343-04	Clevis, Traction Control
3 04001-09	Bolt, Hex Head 5/16-18 x 1"	47 04064-02	Pin, Clevis 3/8-16 x 1-1/16"
4 04030-03	Lockwasher, 5/16"	48 04061-02	Pin, Cotter 3/32 x .75
5 483250	Rubber Spacer	49 04004-34	Rod, Parking Brake
6 483238	Bar, Control Lever	50 48544	Rod End, LH Thread
7 451483	Control Lever Weldment, LH	51 48796	Bushing, Self Align
451484	Control Lever Weldment, RH	52 04001-08	Bolt, Hex Head 5/16-18 x 3/4"
8 04001-17	Bolt, Hex Head 5/16-18 x 2"	53 04001-147	Bolt, Hex Hd 3/8-24 x 5-1/4", 23/4" Thrd
9 04021-10	Nut, Hex Elastic Stop 5/16-18	54 481637	Switch
10 04001-45	Bolt, Hex Head 3/8-16 x 2"	55 04010-12	Screw, Hex SLTD WSHR Head #10 32 x 3/4"
11 04021-09	Nut, Hex Elastic Stop	56 461471	Brake Linkage, LH
12 423488	Mount, Control Linkage	461472	Brake Linkage, RH
13 48224	Ball Bearings, Neutral Return	57 45953	Bellcrank, Brake Actuator
14 43607	Spacer	58 48807	Spring
15 04069-01	Pin, Rue Cotter 3/8 Dia.	59 04001-163	Bolt, Hex Head 1/2-13 x 3-3/4"
16 04001-13	Bolt, Hex Head, 5/16-18 x 2.75 Zinc	60 04021-19	Locknut, Hex 1/2-13 Center Lock
17 04021-13	Nut, Hex Elastic Stop 5/8-11	61 04001-52	Bolt, Hex Head 1/2-13 x 2-1/2"
18 461601	Bracket, Control Lever LH	62 483190	Wheel Motor, Hydro-Gear (27CH, 27KA)
461602	Bracket, Control Lever RH	482639	Wheel Motor, Ross (29DFI, 35BVAC, 35BV)
19 04003-04	Bolt, Carriage 5/16-18 x 1"	63 04001-12	Bolt, Hex Head, 5/16-18 x 1.75, Zinc
20 43600	Spacer, Bearing	64 481601	Brake Band Assembly
21 04003-12	Bolt, Carriage 5/16-18 x 3/4"	65 04064-16	Pin, Clevis 3/8" Dia. x 1.93"
22 04019-03	Nut, Hex Serrated Flange 5/16-18	66 43063	Spacer
23 04050-01	Ring, Retaining 5/8" External "E"	67 461438	Wheel Hub/Brake Drum Assembly
24 43602	Spacer	68 04063-25	Key, Woodruff 5/16 x 1"
25 45918	Bracket, Neutral Return	69 481552	Wheel Assembly 23 x 10.5-12 (52" Only)
26 04003-02	Bolt, Carriage 1/4-20 x 3/4"	481659	Rim W/Valve Stem (52" Only)
27 04040-14	Flatwasher, 1/4" (.312 x .750 x .065)	481660	Tire, 23 x 10.5-12 (52" Only)
28 04021-08	Nut, Hex Elastic Stop 1/4-20	481850	Wheel Assembly 24 x 12-12 Turf Master
29 43477	Pin, Retaining Spring	481851	Rim W/Valve Stem
30 481389	Spring	481852	Tire, 24 x 12-12 Turf Master
31 04060-01	Roll Pin, Spring 5/32 x 3/4"	70 04028-02	Lug Nut, 1/2-20
32 04061-06	Pin, Cotter 9/16 x 1-1/2"	71 48680	Nut, Hex Castle
33 482586	Rod End, Male 3/8-24 RH Thread	72 422373	Threaded Plate
34 04020-25	Nut, 3/8-24 RH Thread	73 04001-20	Bolt, Hex Head 3/8-16 x 1-1/2"
35 43629	Tube, Control Link Air Cooled Engine	74 423279	Plate Weldment, Motor Backing
43624	Tube, Control Link Liquid Cooled Engine	75 423491	Actuator Switch
36 04020-26	Nut, Hex 3/8-24 LH Thread	76 04017-16	Bolt, Hex Serrated Flange 5/16-18 x 3/4"
37 482585	Rod End, Male 3/8-24 LH Thread	77 04003-36	Bolt, Carriage 3/8-16 x 4-3/4"
38 04021-10	Locknut, 5/16-18, Elastic Stop	78 04001-19	Bolt, Hex Head 3/8-16 x 1"
39 482794	Gas Damper	79 481638	Switch
40 04001-31	Bolt, Hex Head 3/8-16 x 2-1/2"	80 04001-168	Bolt, Hex Head 3/8-16 x 1-1/4" Grade 8
41 48114-04	Grease Fitting	81 04003-05	Bolt, Carriage 3/8-16 x 1-1/2"
42 461082	Lever, Parking Brake (Includes item 43)	82 483269	Knob
43 481548	Grip, Parking Brake		

FUEL AND HYDRAULIC SYSTEM



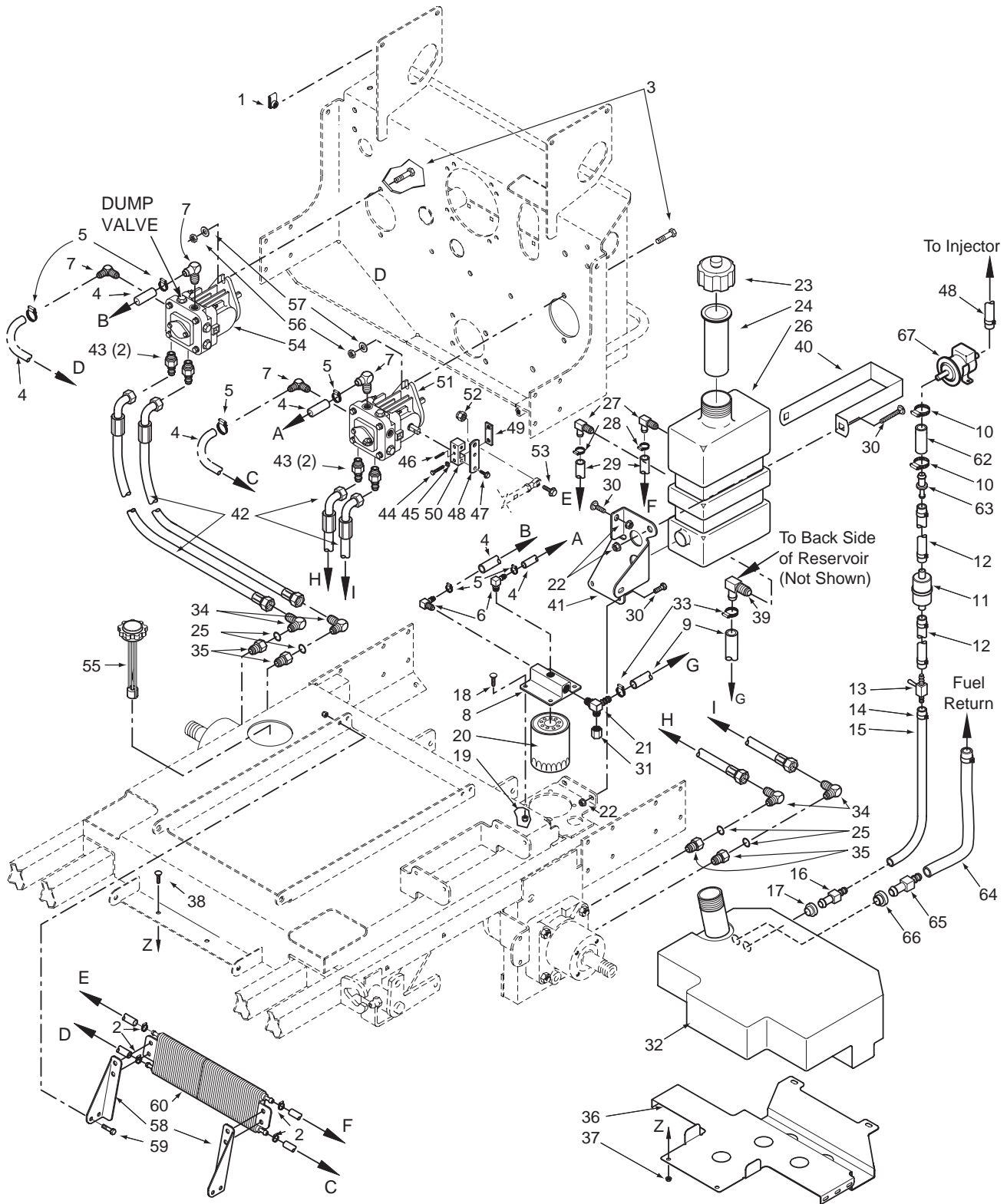
2006 STT F&HS.eps

FUEL AND HYDRAULIC SYSTEM

Ref. Part No. No.	Description	Ref. Part No. No.	Description
1	04110-01 U-Nut 1/4-20	34	48350-02 Elbow, 90 Degree, 7/8-14 THD
2	48136-13 Hose Clamp, 0.69 dia.	35	48938-02 Bushing, 7/8-14 JIC x 3/4-16 O-Ring
3	04001-03 Bolt, Hex Head 1/4-20 x 2.0"	36	423701 Support Bracket, Fuel Tank
4	48811 Hose, 3/8" ID Pushlock - (order by inch)	37	04019-03 Nut, 5/16-18 Serrated Flange
5	48136-07 Clamp, Hose 1/2"	38	04003-02 Bolt, Carraige 1/4-20 x 3/4"
6	481301-03 Elbow, 90 Degree - 1/4 NPT x 3/8 Hose	39	482574 Elbow, 90 Degree
7	482266-01 Elbow, 90 Degree - 9/16 O-ring x 3/8 Hose		482573 Bushing, .78 Dia. Viton
8	48471-02 Oil Filter Base	40	423513 Strap, Hydraulic Tank
9	482606 Hose Assembly, 1/2" ID (Tank to Filter Base)	41	423485 Support Bracket, Hydraulic Tank
10	** Fuel Hose to Carb.	42	481611 Hose Assembly, Pump
11	** Fuel Filter	43	48572-04 Union, 3/4-16 JIC x 3/4-16 O-ring
12	48058 Fuel Hose, 1/4" ID. (order by inch)	44	04001-59 Bolt, Hex Head, 1/4-20 x 1-14"
13	481308 Valve, Shutoff Kawasaki	45	04030-02 Lockwasher, 1/4" Spring
	481753 Valve, Shutoff Kohler	46	04060-09 Roll Pin, Spring 3/16 x 3/4"
14	48059-01 Clamp, Fuel Hose	47	04001-08 Bolt, Hex Head 5/16-18 x 3/4"
15	48058 Fuel Hose, 1/4" ID. (order by inch)	48	482505 Cooler, Oil
16	481602 Hose Fitting	49	422694 Clamp Plate, Pump Control
17	48309 Bushing	50	481793 Block, Pump Control
18	04001-09 Bolt, Hex Head 5/16-18 x1.0" Zinc	51	482695 Pump, Left Hand, BDP-16A-410
19	04019-03 Nut, Serrated Flange 5/16-18		483101 Pump, Left Hand, BDP-16A (31BV)
20	48758 Oil Filter	52	04021-09 Nut, Hex, Elastic Stop 3/8-16
21	482483 Tee, 3/4 O-ring x JIC x 1/2" Hose	53	04001-32 Bolt, Hex Head, 3/8-16 x 1-1/4
22	04021-08 Nut, Hex Elastic Stop 1/4-20	54	482696 Pump, Right Hand, BDP 16A-307
23	481164 Cap, Hydraulic Tank		483100 Pump, Right Hand, BDP-16A (31BV)
24	481507 Insert, Filler Neck	55	482497 Cap, Fuel Tank W/Gauge
25	48603-02 O-Ring	56	04021-09 Nut, Hex Elastic Stop 3/8-16
26	461451 Oil Reservoir Assembly (includes 24, 27, 39)	57	04043-04 Flatwasher, 3/8" (.391 x .938 x .105) Grade 8
27	482572 Elbow, 90 Degree .38 Hose	58	423524 Mounting Bracket - LH, Oil Cooler
	482571 Bushing, .56 Dia. Viton		423944 Mounting Bracket - LH, Oil Cooler (35BVAC Only)
28	48136-13 Hose Clamp, 0.69 dia.		423525 Mounting Bracket - RH, Oil Cooler
29	48811 Hose, 3/8" ID, Pushlock (order by inch)		423945 Mounting Bracket - RH, Oil Cooler (35BVAC Only)
30	04010-10 Screw, Phillips Head, 1/4-20		
31	48571-02 Cap		
32	461751 Fuel Tank Assembly (includes items 23 & 24)		
33	48136-05 Clamp, Hose		

** Available through the individual engine manufacturer.

FUEL AND HYDRAULIC SYSTEM - KAWASAKI 29DFI



Section 8

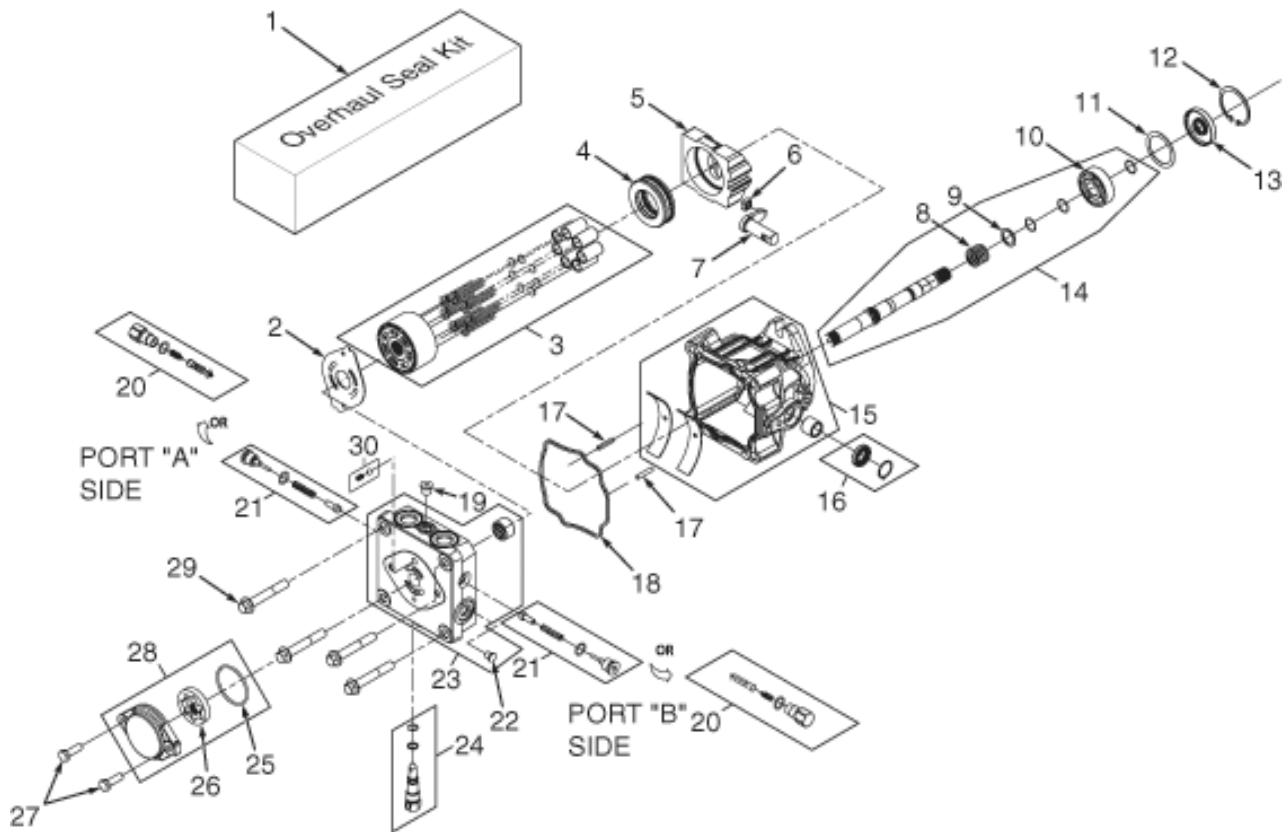


FUEL AND HYDRAULIC SYSTEM - KAWASAKI 29DFI

Ref. Part No. No.	Description	Ref. Part No. No.	Description
1	04110-01 U-Nut 1/4-20	35	48938-02 Bushing, 7/8-14 JIC x 3/4-16 O-Ring
2	48136-13 Hose Clamp, 0.69 dia.	36	423701 Support Bracket, Fuel Tank
3	04001-03 Bolt, Hex Head 1/4-20 x 2.0"	37	04019-03 Nut, 5/16-18 Serrated Flange
4	48811 Hose, 3/8" ID Pushlock - (order by inch)	38	04003-02 Bolt, Carriage 1/4-20 x 3/4"
5	48136-07 Clamp, Hose 1/2"	39	482574 Elbow, 90 Degree
6	481301-03 Elbow, 90 Degree - 1/4 NPT x 3/8 Hose		482573 Bushing, .78 Dia. Viton
7	482266-01 Elbow, 90 Degree - 9/16 O-ring x 3/8 Hose	40	423513 Strap, Hydraulic Tank
8	48471-02 Oil Filter Base	41	423485 Support Bracket, Hydraulic Tank
9	482606 Hose Assembly, 1/2" ID (Tank to Filter Base)	42	481611 Hose Assembly, Pump
10	48136-05 Clamp, .87 max Dia.	43	48572-04 Union, 3/4-16 JIC x 3/4-16 O-ring
11	** Fuel Filter, Kawasaki (p/n 49019-1055)	44	04001-59 Bolt, Hex Head, 1/4-20 x 1-14"
12	481178 Fuel Hose, 5/16" ID. (order by inch)	45	04030-02 Lockwasher, 1/4" Spring
13	481308 Valve, Shutoff Kawasaki	46	04060-09 Roll Pin, Spring 3/16 x 3/4"
14	48059-01 Clamp, Fuel Hose	47	04017-05 Bolt, Hex Serrated Flange, 1/4-20 x 3/4"
15	481178 Fuel Hose, 5/16" ID. (order by inch)	48	481178 Fuel Hose, 5/16" ID. (order by inch)
16	481312 Hose Fitting	49	422694 Clamp Plate, Pump Control
17	48309 Bushing	50	481793 Block, Pump Control
18	04001-09 Bolt, Hex Head 5/16-18 x1.0" Zinc	51	483101 Pump, Left Hand, BDP-16A
19	04019-03 Nut, Serrated Flange 5/16-18	52	04021-09 Nut, Hex, Elastic Stop 3/8-16
20	48758 Oil Filter	53	04001-32 Bolt, Hex Head, 3/8-16 x 1-1/4
21	482483 Tee, 3/4 O-ring x JIC x 1/2" Hose	54	483100 Pump, Right Hand, BDP 16A
22	04021-08 Nut, Hex Elastic Stop 1/4-20	55	482497 Cap, Fuel Tank W/Gauge
23	481164 Cap, Hydraulic Tank	56	04021-09 Nut, Hex Elastic Stop 3/8-16
24	481507 Insert, Filler Neck	57	04043-04 Flatwasher, 3/8" (.391 x .938 x .105) Grade 8
25	48603-02 O-Ring	58	423524 Mounting Bracket - LH, Oil Cooler
26	461451 Oil Reservoir Assembly (includes 24, 27, 39)		423525 Mounting Bracket - RH, Oil Cooler
27	482572 Elbow, 90 Degree .38 Hose	59	04001-08 Bolt, Hex Head 5/16-18 x 3/4"
	482571 Bushing, .56 Dia. Viton	60	482505 Cooler, Oil
28	48136-13 Hose Clamp, 0.69 dia.	61	48136-13 Clamp, .69 Dia.
29	48811 Hose, 3/8" ID, Pushlock (order by inch)	62	482702 Hose, Fuel Line (order by inch)
30	04010-10 Screw, Phillips Head, 1/4-20	63	** Adapter, 1/2" - 5/16" (p/n 59071-2141)
31	48571-02 Cap	64	48058 Hose, 1/4" Fuel Line (order by inch)
32	461586 Fuel Tank Assembly (incl. items 16, 17, 65, 66)	65	482703 Fitting, Hose
33	48136-05 Clamp, Hose	66	48309 Bushing
34	48350-02 Elbow, 90 Degree, 7/8-14 THD	67	** Fuel Pump, Kawasaki 29DFI
		68	481178 Fuel Hose, 5/16" ID. (order by inch)

** Available through the individual engine manufacturer.

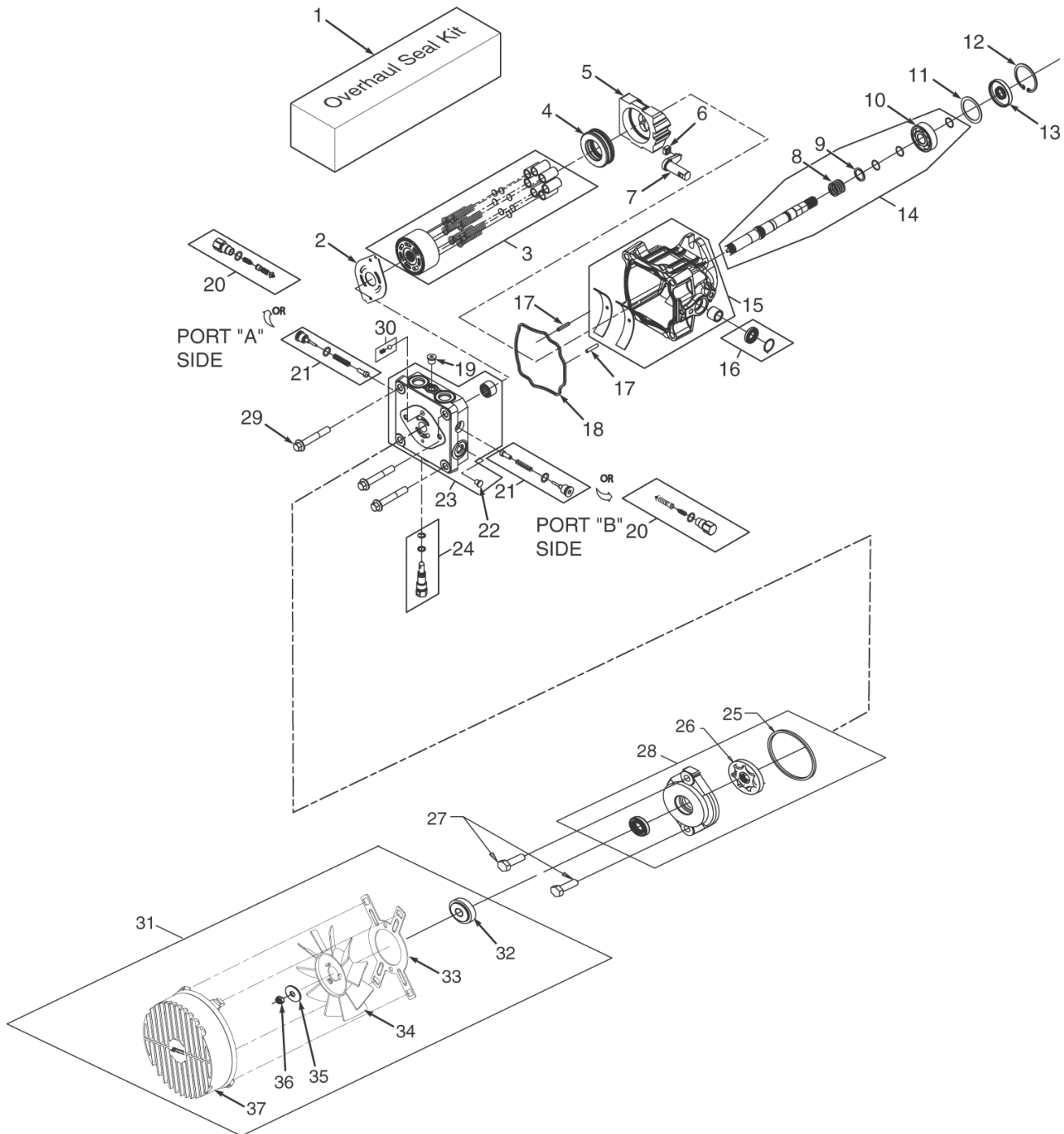
BDP-16A HYDRAULIC PUMP ASSEMBLY



BDP-16A HYDRAULIC PUMP ASSEMBLY

Ref. No.	Part No.	Description
1	HG70740	Overhaul Seal Kit
2	HG51455	Valve Plate
3	HG70735	Cylinder Block Kit - 16cc
4	HG51462	Thrust Ball Bearing Assembly
5	HG51436	Variable Swashplate
6	HG2000015	Slot Guide
7	HG2000014	Trunnion Arm
8	HG2000025	Block Spring
9	HG2000024	Block Thrust Washer
10	HG2000032	Shaft Ball Bearing
11	HG2000023	Spacer
12	HG2000038	Retaining Ring
13	HG51092	Seal
14	HG70581	Kit, Pump Shaft
15	HG70738	Housing Kit
16	HG70739	Trunnion Seal Kit
17	HG50641	Pin
18	HG51437	O-Ring
19	HG9005110-7500	Straight Thread Plug
20	HG70743	Shock Valve Kit (.031 Orifice)
21	HG70742	Shock Valve Kit (.024 Orifice)
22	HG9005200-7500	Straight Thread Plug
23	HG70736	End Cap Kit
24	HG2513030	Bypass Valve Kit
25	HG9004100-1430	O-Ring
26	HG50406	Gerotor Assembly (.19 cu.in./rev.)
27	HG50173	Socket Head Cap Screw (M8 x 1.25-25mm)
28	HG2510071	Charge Pump Kit (.19 STD. Splined)
29	HG51457	Hex Screw, Flanged Head (M10 x 1.50-65mm)
30	HG70402	Charge Relief Kit

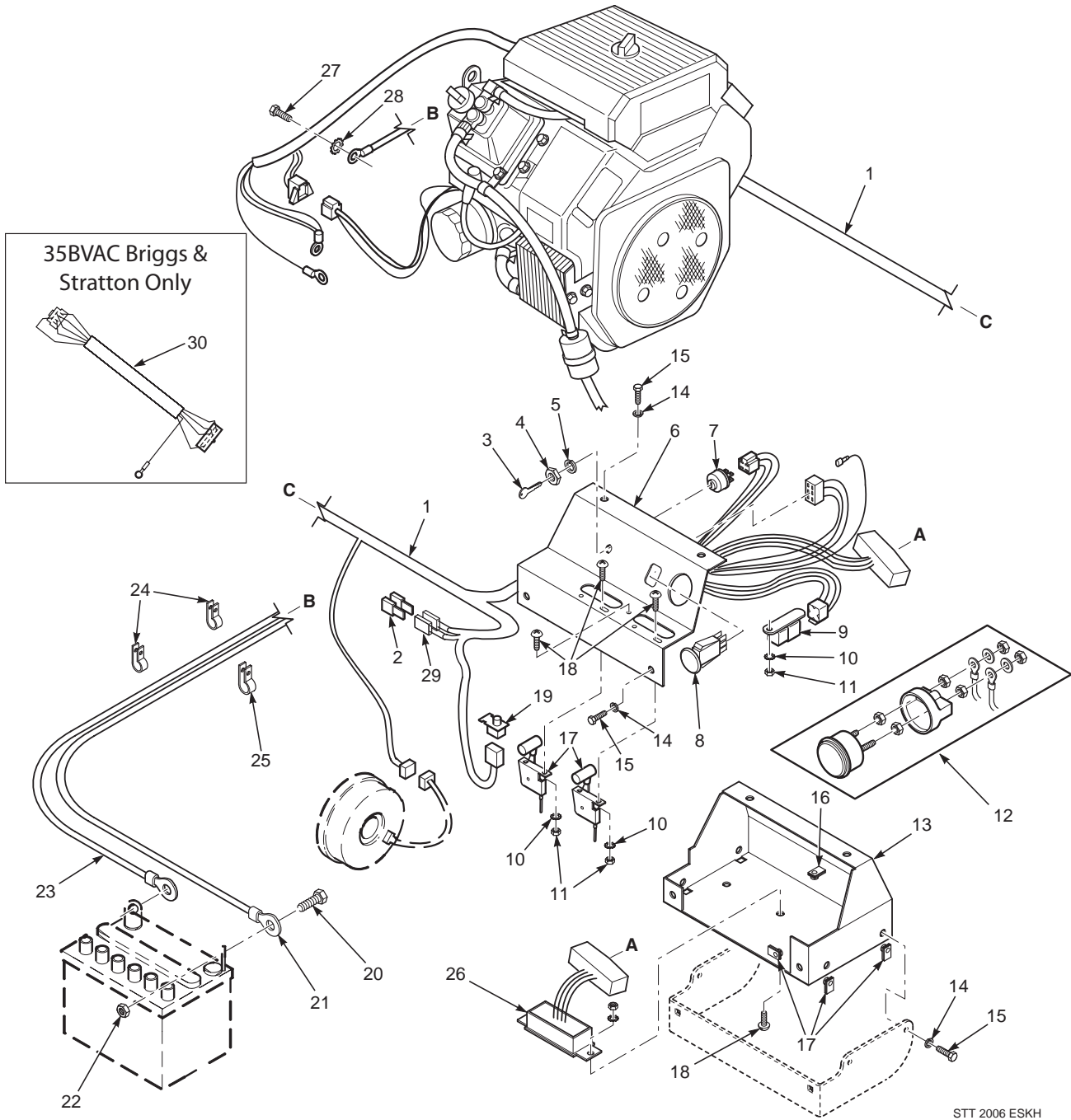
BDP-16A HYDRAULIC PUMP ASSEMBLY WITH COOLING FAN (29DFI, 35BVAC, 35BV ONLY)



**BDP-16A HYDRAULIC PUMP ASSEMBLY WITH COOLING FAN
(29DFI, 35BVAC, 35BV ONLY)**

Ref. No.	Part No.	Description
1	HG70740	Overhaul Seal Kit
2	HG51455	Valve Plate
3	HG70735	Cylinder Block Kit - 16cc
4	HG51462	Thrust Ball Bearing Assembly
5	HG51436	Variable Swashplate
6	HG2000015	Slot Guide
7	HG2000014	Trunnion Arm
8	HG2000025	Block Spring
9	HG2000024	Block Thrust Washer
10	HG2000032	Shaft Ball Bearing
11	HG2000023	Spacer
12	HG2000038	Retaining Ring
13	HG51092	Seal
14	HG70578	Kit, Pump Shaft (keyed thru taper)
15	HG70738	Housing Kit
16	HG70739	Trunnion Seal Kit
17	HG50641	Pin
18	HG51437	O-Ring
19	HG9005110-7500	Straight Thread Plug
20	HG70743	Shock Valve Kit (.031 Orifice)
21	HG70742	Shock Valve Kit (.024 Orifice)
22	HG9005200-7500	Straight Thread Plug
23	HG70736	End Cap Kit
24	HG2513030	Bypass Valve Kit
25	HG9004100-1430	O-Ring
26	HG50406	Gerotor Assembly (.19 cu.in./rev.)
27	HG50173	Socket Head Cap Screw (M8 x 1.25-25mm)
28	HG70924	Charge Pump Kit (.19 STD. Splined)
29	HG51457	Hex Screw, Flanged Head (M10 x 1.50-65mm)
30	HG70402	Charge Relief Kit
31	HG70916	Fan Kit (incl. items 32, 33, 34, 35, 36, 37)
32	HG51348	Hub
33	HG52016	Bracket, Shroud
34	HG52014	Fan
35	HG51389	Washer
36	HG50108	Nut
37	HG52059	Shroud

ELECTRICAL SYSTEM (KOHLER & 35BVAC)



ELECTRICAL SYSTEM (KOHLER & 35BVAC)

Ref. No.	Part No.	Description
1	483055	Wire Harness, STT Air Cooled
2	48298	Fuse, 20 AMP
3	48017-02	Key & Ring Assembly
4	48017-04	Nut, Hex 5/8-32
5	48017-03	Lockwasher, 5/8" Internal
6	461916	Instrument Panel, Top w/Decals
7	48798	Key Switch
8	483162	Switch, PTO
9	483013	Relay
10	04031-01	Lockwasher, #10 External Tooth
11	04020-01	Nut, Hex #10-32
12	481755	Ammeter
13	451879	Base, Instrument Panel
14	04030-02	Lockwasher, 1/4"
15	04001-01	Bolt, Hex Head 1/4-20 x 3/4"
16	04110-01	U-Nut, 1/4-20
17	481544	Throttle And Choke Controls (Kohler)
18	481662	Throttle And Choke Controls (35BVAC Briggs & Stratton)
19	04010-01	Screw, Phillips Washer Head #10-32 x 1/2"
20	481638	Switch, Interlock-Seat
21	04001-44	Bolt, Hex Head 1/4-20 x 1/2"
22	48029-22	Cable, Battery - Red
23	04020-02	Nut, Hex 1/4-20
24	48029-11	Cable, Battery - Black
25	48030-09	Clamp, Cable 1/2" ID.
26	48136-05	Clamp, Cable 3/4" ID.
27	483029	Electronic Module
28	04002-12	Bolt, Hex Head M8-1.25 x 20
29	04031-03	Lockwasher, 5/16" External Tooth
30	48430	Fuse Holder w/Fuse and Connector
31	482588	Clip, Fuse Holder
32	482849	Wire Harness Adapter 35BVAC (Briggs & Stratton Only)

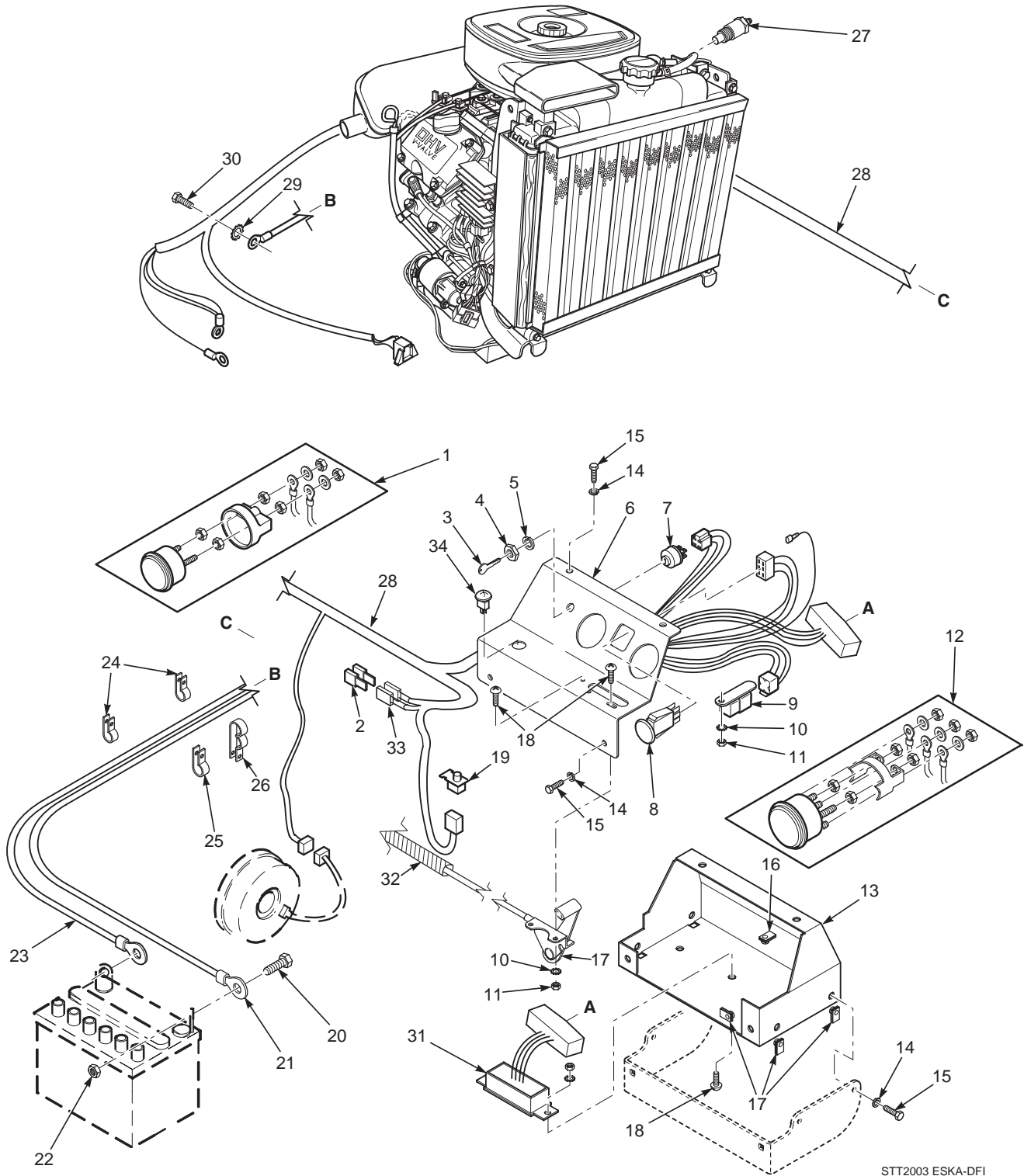
Section 8



ELECTRICAL SYSTEM (27HP KAWASAKI, 35BV BRIGGS & STRATTON)

Ref. No.	Part No.	Description
1	481755	Ammeter
2	48298	Fuse, 20 AMP
3	48017-02	Key & Ring Assembly
4	48017-04	Nut, Hex 5/8-32
5	48017-03	Lockwasher, 5/8" Internal
6	461916	Instrument Panel, Top w/Decals
7	48798	Key Switch
8	483162	Switch, PTO
9	483013	Relay
10	04031-01	Lockwasher, #10 External Tooth
11	04020-01	Nut, Hex #10-32
12	481183	Water Temp. Gauge
13	451879	Base, Instrument Panel
14	04030-02	Lockwasher, 1/4"
15	04001-01	Bolt, Hex Head 1/4-20 x 3/4"
16	04110-01	U-Nut, 1/4-20
17	481662	Throttle And Choke Controls
18	04010-01	Screw, Phillips Washer Head #10-32 x 1/2"
19	481638	Switch, Interlock-Seat
20	04001-44	Bolt, Hex Head 1/4-20 x 1/2"
21	48029-06	Cable, Battery - Red
	48029-22	Cable, Battery - Red (35BV Only)
22	04020-02	Nut, Hex 1/4-20
23	48029-11	Cable, Battery - Black
24	48030-09	Clamp, Cable 1/2" ID.
25	48136-05	Clamp, Cable 3/4" ID.
26	48030-11	Clamp, Cable
27	481670	Sending Unit, Water Temp.
28	483054	Wire Harness, STT Kawasaki Liquid Cooled
	483145	Wire Harness, STT Briggs & Stratton Liquid Cooled
29	04031-03	Lockwasher, 5/16" External Tooth
30	04002-12	Bolt, Hex Head M8-1.25 x 20
31	483029	Electronic Module
32	481945-01	Heatshield, Flexible
33	48430	Fuse Holder w/Fuse and Connector
	482588	Clip, Fuse Holder

ELECTRICAL SYSTEM (29HP-DFI KAWASAKI)



STT2003 ESKA-DFI

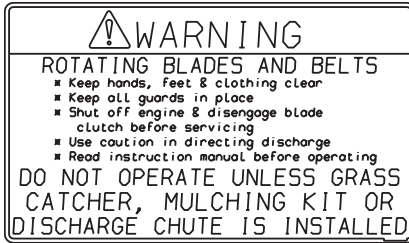
ELECTRICAL SYSTEM (29HP-DFI KAWASAKI)

Ref. No.	Part No.	Description
1	481755	Ammeter
2	48298	Fuse, 20 AMP
3	48017-02	Key & Ring Assembly
4	48017-04	Nut, Hex 5/8-32
5	48017-03	Lockwasher, 5/8" Internal
6	461916	Instrument Panel, Top w/Decals
7	48798	Key Switch
8	483162	Switch, PTO
9	48788	Relay
10	04031-01	Lockwasher, #10 External Tooth
11	04020-01	Nut, Hex #10-32
12	481183	Water Temp. Gauge (STT - KA Only)
13	451879	Base, Instrument Panel
14	04030-02	Lockwasher, 1/4"
15	04001-01	Bolt, Hex Head 1/4-20 x 3/4"
16	04110-01	U-Nut, 1/4-20
17	481662	Throttle Controls
18	04010-01	Screw, Phillips Washer Head #10-32 x 1/2"
19	481638	Switch, Interlock-Seat
20	04001-44	Bolt, Hex Head 1/4-20 x 1/2"
21	48029-06	Cable, Battery - Red
22	04020-02	Nut, Hex 1/4-20
23	48029-11	Cable, Battery - Black
24	48030-09	Clamp, Cable 1/2" ID.
25	48136-05	Clamp, Cable 3/4" ID.
26	48030-11	Clamp, Cable
27	481670	Sending Unit, Water Temp.
28	483056	Wire Harness, STT Liquid Cooled Digital Fuel Injection (DFI)
29	04031-03	Lockwasher, 5/16" External Tooth
30	04002-12	Bolt, Hex Head M8-1.25 x 20
31	483029	Electronic Module
32	481945-01	Heatshield, Flexible
33	48430	Fuse Holder w/Fuse and Connector
34	481182	Indicator Light, Check Engine

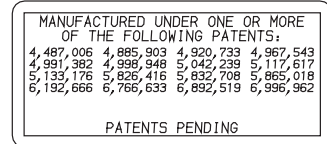
REPLACEMENT DECALS AND INFORMATION PLATES



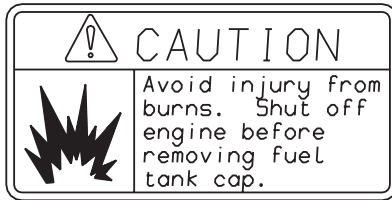
1



2



5



4



3



481568

6



481971

7

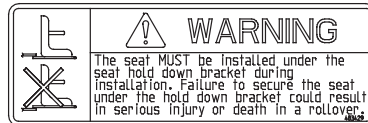


48404

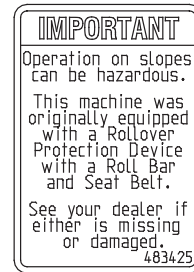
8



9

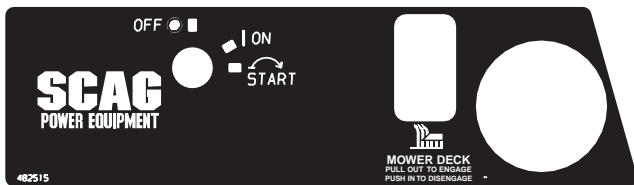


26



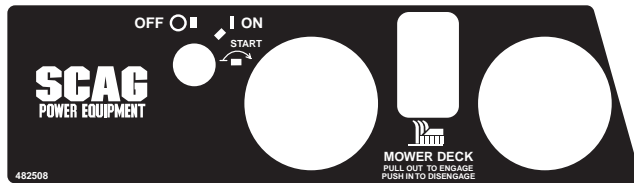
483425

25



482515

10



482508

11



482983

12



482984

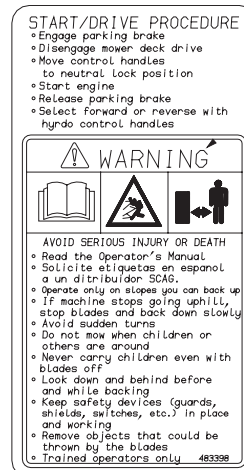
23



13

22

14



REPLACEMENT DECALS AND INFORMATION PLATES

Ref. No.	Part No.	Description
1	483192	Decal, Danger-Spinning Blades
2	483406	Decal, Warning-Rotating Blades
3	483200	Decal, 52 Velocity Plus
	483201	Decal, 61 Velocity Plus
	481956	Decal, 72 Advantage
4	483397	Decal, Fuel Tank
5	483044	Decal, Patents
6	481568	Decal, Traction Control
7	481971	Decal, Heavy Duty Commercial
8	48404	Decal, Metalcraft-Made In USA
9	483402	Decal, Belt Cover
10	482515	Decal, Instrument Panel-Upper (Air Cooled)
11	482508	Decal, Instrument Panel-Upper (Kawasaki)
12	482983	Decal, Instrument Panel-Lower
13	482565	Decal, Cutting Height - Lower
14	483398	Decal, Start/Drive Procedure
15	482710	Decal, Seat Support
16	482577	Decal, Turf Tiger
17	483229	Decal, Turf Tiger
18	481664	Decal, Stripes-RH
19	481663	Decal, Stripes-LH
20	481694	Decal, Tiger
21	483405	Decal, Warning
22	482493	Decal, Cutting Height - Upper
23	482984	Decal, Instrument Panel - Lower (Kawasaki 29HP-DFI only)
24	483158	Decal, ROPS
25	483425	Decal, ROPS
26	483429	Decal, Warning Seat Hold Down
27	483411	Decal, Seat Replacement
**	461982	Spanish Decal Kit, STT (not shown)

IMPORTANT ADJUSTMENT PROCEDURES
 READ OPERATOR'S MANUAL FOR MORE DETAILS
 Check tire pressure - (Drive tires-12 psi, Caster tires-25 psi)

NEUTRAL ADJUSTMENT
 Loosen jam nuts

 Rotate turnbuckle
 With an operator in the seat, engine running, control levers in neutral and the parking brake disengaged - adjust control linkage. Loosen jam nuts. If wheel rotates forward, adjust turnbuckle CCW. If wheel rotates rearward, adjust turnbuckle CW. Adjust until drive wheel stops turning. Tighten jam nuts. Repeat for opposite side.

TRACKING ADJUSTMENT
 If the machine pulls to the right, adjust LH control linkage CCW to slow left wheel. If the machine pulls to the left, adjust RH control linkage CW to slow right wheel. Readjust neutral if necessary.

FREE WHEEL OPERATION
 To move machine without running the engine, rotate both dump valves located at the LH side of the pumps CCW 1/2 turn to "freeheel" positions. Return dump valves to original position to operate the mower. Tighten to 7-10 ft-lbs.

HYDRAULIC FLUID LEVEL
 Check hydraulic fluid level while fluid is cool. Fluid level should be 3" below top of filler neck. Fill with SAE 20W50 motor oil only.

IMPORTANT
 Do not overfill. Room for hot fluid expansion must be allowed or resulting expansion may cause leaks in the system.

IMPORTANT DRIVESHAFT MAINTENANCE
 Grease yokes 3-4 pumps Every 200 hours

 Grease spline 8-10 pumps Every 50 hours

482710

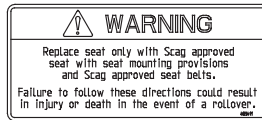
15



16



17



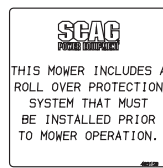
27



21



20



24

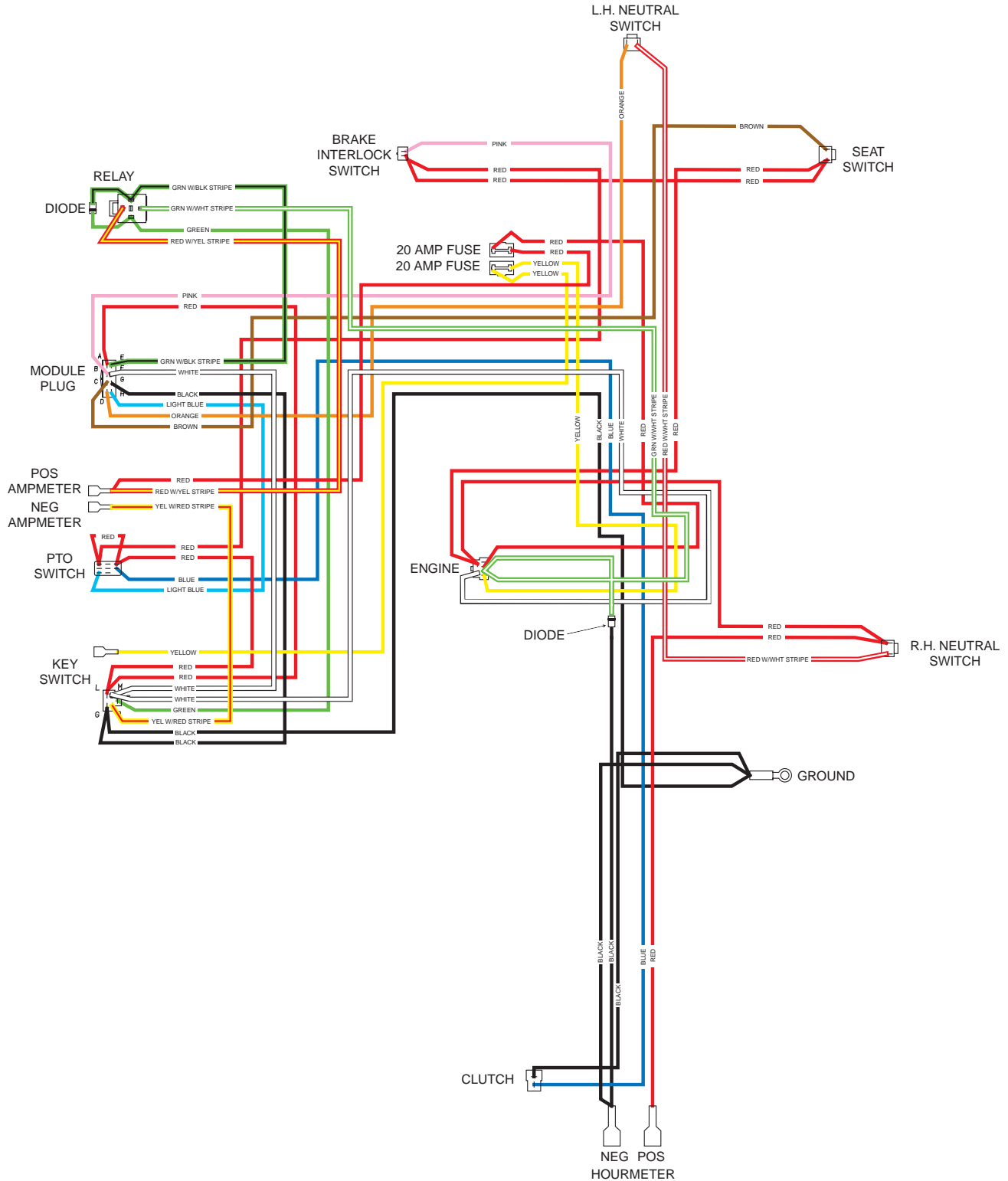


18



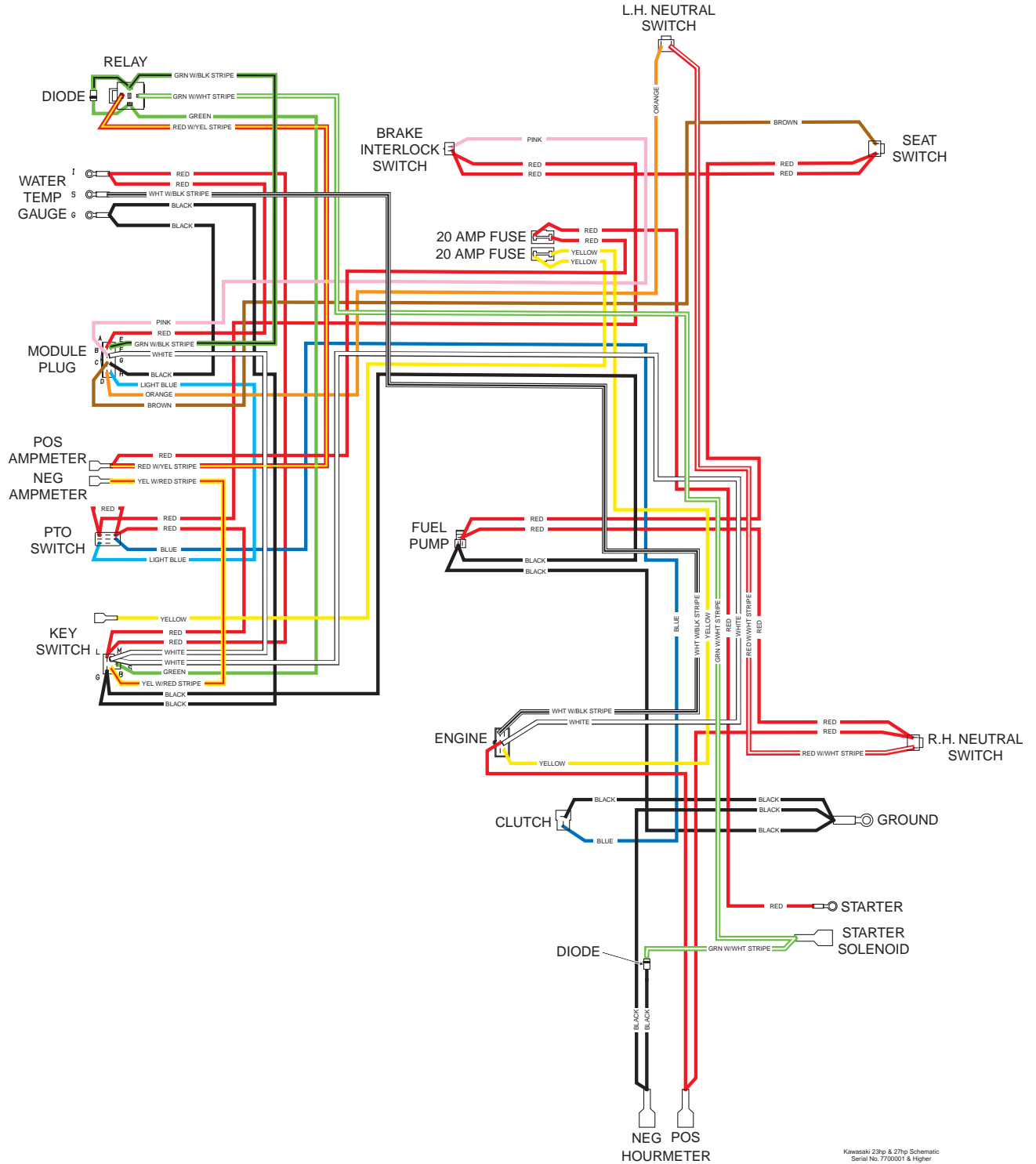
19

STT ELECTRICAL SCHEMATIC (KOHLER)



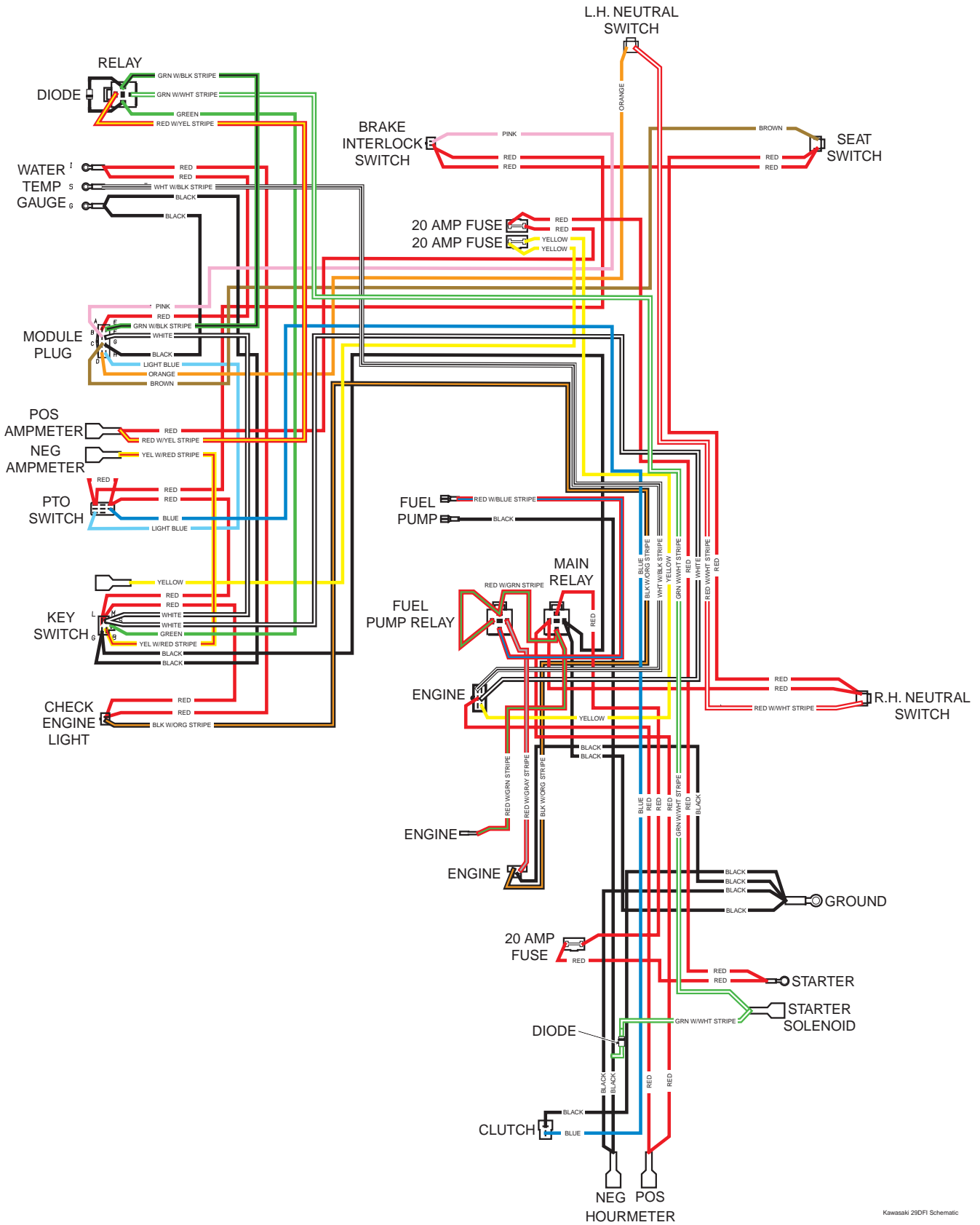
Kohler STT Schematic
Serial No. 7700001 & Higher

STT ELECTRICAL SCHEMATIC (27HP KAWASAKI)



Kawasaki 23hp & 27hp Schematic
Serial No. 7700001 & Higher

ELECTRICAL SCHEMATIC (KAWASAKI 29HP - DFI)



Kawasaki 29DFI Schematic

ELECTRICAL SCHEMATIC (BRIGGS & STRATTON 35BV)

