

SCAG®

SSZ SPINDLE-DRIVEN GRASS CATCHER TECHNICAL MANUAL

MODEL

GC-SSZ

**© 1993
SCAG POWER EQUIPMENT
DIVISION OF METALCRAFT OF MAYVILLE, INC.**

**PART NO. 01193
PRINTED 4/93
PRINTED IN USA**

TABLE OF CONTENTS

SUBJECT	PAGE
Introduction and Safety Instructions -----	2
Assembly Instructions -----	2
Deck Assembly -----	3
Counter Balance Assembly -----	4
Bucket Support Assembly -----	5
Illustrated Parts Listing -----	6 - 9
Warranty -----	10

INTRODUCTION

This manual has been prepared to provide the information you need to correctly assemble, operate, and maintain this accessory. Read it carefully and keep it for future reference. Should you ever need repair parts or service, contact your Scag authorized parts and service dealer.

To avoid personal injury, it is imperative that all safety instructions be observed.

Any references made in this manual to the RH or LH side are determined with the operator in the normal operating position.

The replacement of any part on this product by other than the manufacturer's authorized replacement part may adversely affect the performance, durability or safety of this product.

The manufacturer reserves the right to make changes or add improvement to its product at any time without prior notice or obligation. The manufacturer also reserves the right to decide, upon its discretion and at any time, to discontinue a product.

SAFETY/OPERATING INSTRUCTIONS

1. Read this technical manual and the technical manual that is supplied with the machine this accessory is used on. A replacement manual is available by sending complete model and serial number information plus \$2.00 to:
Scag Power Equipment, Inc.
1000 Metalcraft Drive
P.O. Box 152
Mayville, WI 53050

2. When operating the mower without the grass catcher attachment, the discharge chute extension must be installed in the normal, full down position.
3. Never operate your mower without the complete grass catcher and all guards and covers installed, or the discharge chute extension properly installed.
4. Before removing grass bucket, disengage mower, stop engine and wait for all movement to stop.
5. Always turn engine off, remove key and wait for all movement to stop before servicing, adjusting mower deck height, or cleaning the mower.
6. Do not modify or alter any component of the grass catcher attachment.
7. Do not allow anyone to ride on the grass catcher attachment or on the mower.
8. Always turn off engine, remove key and wait for all movement to stop before removing any debris from the grass catcher components.

ASSEMBLY INSTRUCTIONS

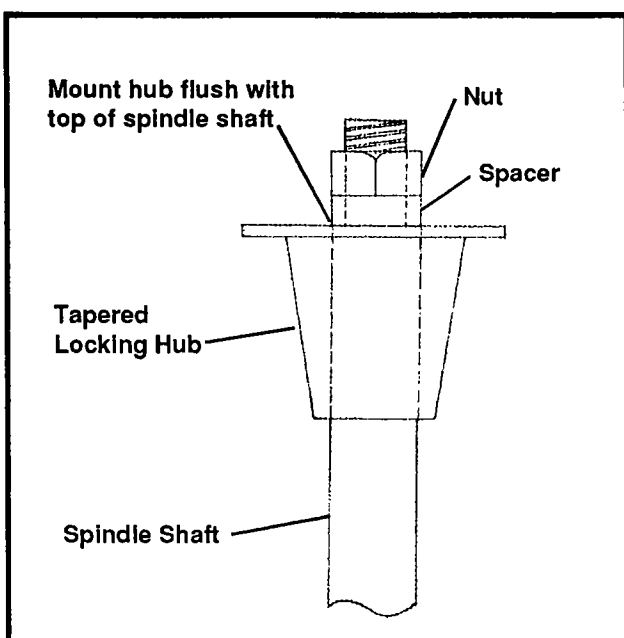
NOTICE: Any instructions concerning item numbers refer to the illustrated parts breakdown on pages 6 thru 9. Use this illustrated parts list as a reference when following the assembly instructions.

Remove all crating and lay out all hardware. Check the hardware list enclosed to ensure proper assembly.

Read all safety and operating instructions before assembly.

DECK ASSEMBLY

1. Remove the right side belt cover. Take the template, provided with this manual, and cut out along dotted lines. Place template on the cutter deck as illustrated on the template. Center punch and drill eight (8) pilot holes 1/8" diameter.
2. Using an 13/32" drill bit, drill the six (6) holes as indicated on the template. Using an 11/32" drill bit, drill the remaining two (2) holes.
3. Loosen right side spindle belt and remove spindle pulley (refer to the Technical Manual included with your machine for instructions).
4. Mount double pulley from grass catcher kit to RH spindle. Pulley should be flush with the top of the spindle assembly. See illustration below. Remount right side spindle belt to bottom slot in double pulley and tighten belt.
5. Mount reinforcement plate to the underside of the cutter deck using four (4) carriage bolts, 3/8 x 1-1/4". Mount gear box assembly to carriage bolts using four (4) 3/8" washers and four (4) 3/8" elastic stop nuts. Finger tighten so box can be adjusted later.
6. Mount front tension bracket using two (2) 3/8 x 3/4" serrated flange hex head bolts and two (2) serrated flange nuts and tighten. Install tension carriage bolt 3/8 x 2" and 3/8" elastic nut. Do not tighten at this time.
7. Install belt (P/N 48913) on top pulley groove of spindle to the gear box pulley. Tighten tension bolt to proper belt tension.
8. Tighten four (4) nuts on gear box mount assembly which you had previously finger tightened.
9. Remove RH anti-scalp wheels, front and rear. Locate and assemble front and rear receiver brackets and bracket supports. Fasten with five (5) 5/16" serrated flange nuts and 5/16 x 3/4" flange bolts finger tight.



10. Remount front and rear anti-scalp wheels with receiver bracket supports between scalp wheel and deck mount using 3/8 x 1" serrated flange bolt. Match the five (5) slots in the bracket support with those on the deck mount. Do not fully tighten at this time.
11. Mount the hinge bracket (P/N 421314) on the rear receiver assembly using the ring pin and hair pin.

12. Insert the blower mounting bracket (P/N 45496) into the receiver brackets starting with the front receiver. Hold rear of mounting bracket on a 45 degree angle. Insert the hair pin through the front arm hole of the blower mount bracket. Lower back end of mounting bracket into the rear receiver bracket making sure that the flat washers are on the outside of the bracket. Lock in place with the 3/8 x 4" hex head bolt and 3/8" elastic stop nut.

(NOTE: Retaining pin should be inserted from the left side of the bracket.)

13. Mount blower housing to the mounting bracket using three (3) 3/8" flat washers and elastic nuts. Do not tighten all the way because adjustments need to be made.

14. Align blower housing intake with deck discharge opening. Tighten anti-scalp wheel brackets, front and rear. While holding blower housing in place, continue tightening front and rear receiver brackets.

15. Mount key in keyway and slide pulley removed from right spindle onto the blower shaft so that the blower pulley will align with the gear box pulley. Tighten in place.

16. Install blower drive belt on gear box pulley and blower pulley. Push the blower housing back while lifting the rear of housing upward 1/2" and tighten the nuts on the blower housing. Lower the blower housing bracket into the rear receiver mount. Swing the latch in place and secure with the hair pin.

17. Mount weights on chassis by drilling two 13/32" holes. (Use a weight resting on the frame to mark hole placement for drilling.) Mount weights as illustrated on page 9, using two (2) 3/8 x 6" bolts, washers, and elastic stop nuts.

COUNTER BALANCE ASSEMBLY

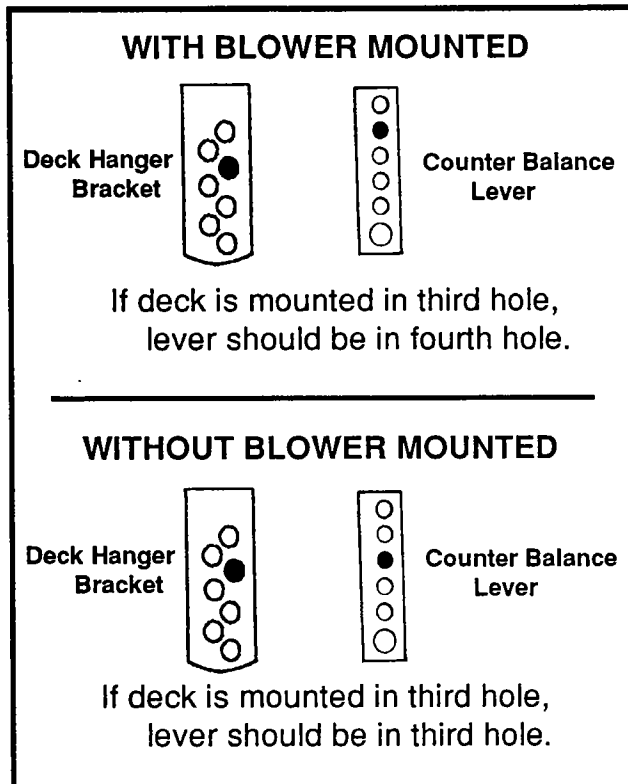
1. Mount counter balance bracket (P/N 421345) to front of kick plate by removing two right side dash panel bolts and far right hinge panel carriage bolt. Use two (2) 5/16 x 3/4" serrated flange bolts and one (1) 5/16 x 1" carriage bolt with a 5/16" flange nut. Secure counter balance bracket to kick plate.

2. Install a 3/8 x 3/4" flange bolt in top tab of bracket and secure with a 3/8" flange nut.

3. Install the counter balance lever (P/N 421346) to the bottom tab of bracket using a 3/8 x 1-1/2" carriage bolt, compression spring, 3/8" flat washer, and 3/8" elastic nut. Tighten so that the nut is flush with the end of the bolt.

4. Install the spring (P/N 48755) onto the "U" bolt. Install the "U" bolt to the cutter deck so that the 5/16" flange nuts are flush with the "U" bolt ends. Lock the top nuts down against deck. Tighten flange nuts under deck 1/4 turn to lock "U" bolt in place.

5. Mount counter balance rod (P/N 44093) to spring so that the hook faces the rear of the machine. With lever in a horizontal position, slide the rod into the proper hole in lever. See illustration below. Pulling up on the lever, hook arm on the bolt in the top tab.



3. Mount side support brackets using four (4) 5/16 x 3/4" carriage bolts and flange nuts. Use the second hole from top to mount slotted hole in support mount tray.
4. Install left and right hinge plates to hinge cover using four (4) 3/8 x 1" capscrews, flat washers, and elastic stop nuts. Tighten within 1/2 turn of being tight.
5. Mount hopper onto tray bracket so that it rests against the support frame. Put lid on top of hopper and center from side to side. Locate the two (2) hex head hinge bolts (3/8 x 1-1/2"), twelve (12) spacer washers and two (2) elastic stop nuts.

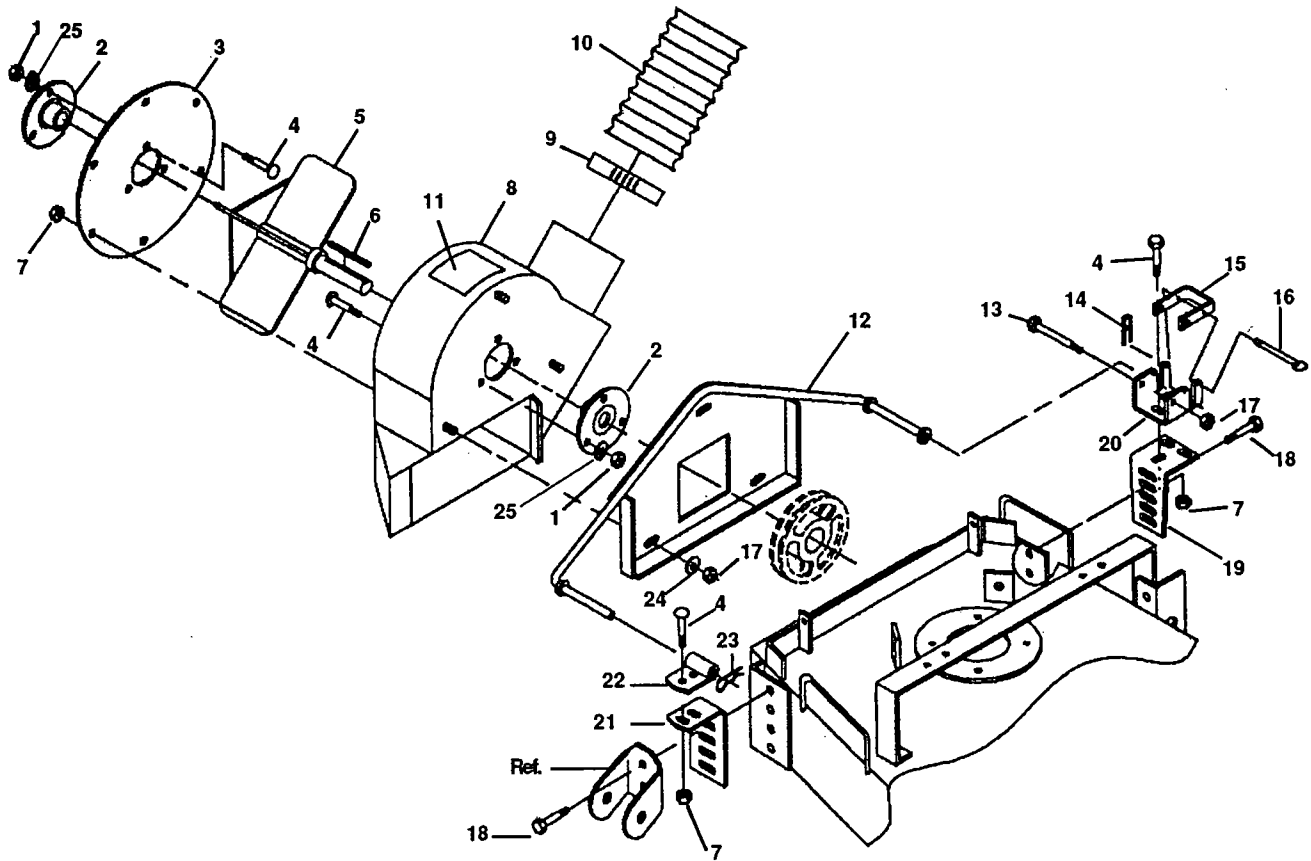
Insert as many spacer washers as needed to take up the space between the hinge plate and support frame tubes so that lid remains centered. Tighten the elastic stop nuts until snug, then back off 1/8 of a turn so that lid can pivot easily.

6. Tighten four (4) hinge plate bolts on the lid, starting on right side.
7. Install cover support rod by mounting the two hair pins to inside holes in rod. Slide the 2" flat washer onto bottom of the rod. Insert the support rod into the hole on the right hinge plate and into the lower hole on the arm of the support bracket. Slide a 3/8" flat washer into the lower hole and insert a hair pin. Holding the support rod in place, raise the lid and lock it open. Insert a hair pin in the lid bracket.
8. Insert the elbow in the lid and lock in place. Mount the hose and hose clamp.
9. Recheck all hardware and fittings for proper tightness. Test run to verify that the grass catcher operates properly.

BUCKET SUPPORT ASSEMBLY

1. Using the four "J" hooks, 5/16 x 3/4" carriage bolts, and 5/16" serrated flange bolts, fasten bottom tray to rear frame.
2. Mount support frame tube to rear fenders utilizing the existing fender mount holes. Remove the four fender mount bolts (two each side) and replace with 5/16 x 1" carriage bolts and flange nuts. Mount all four bolts, then tighten.

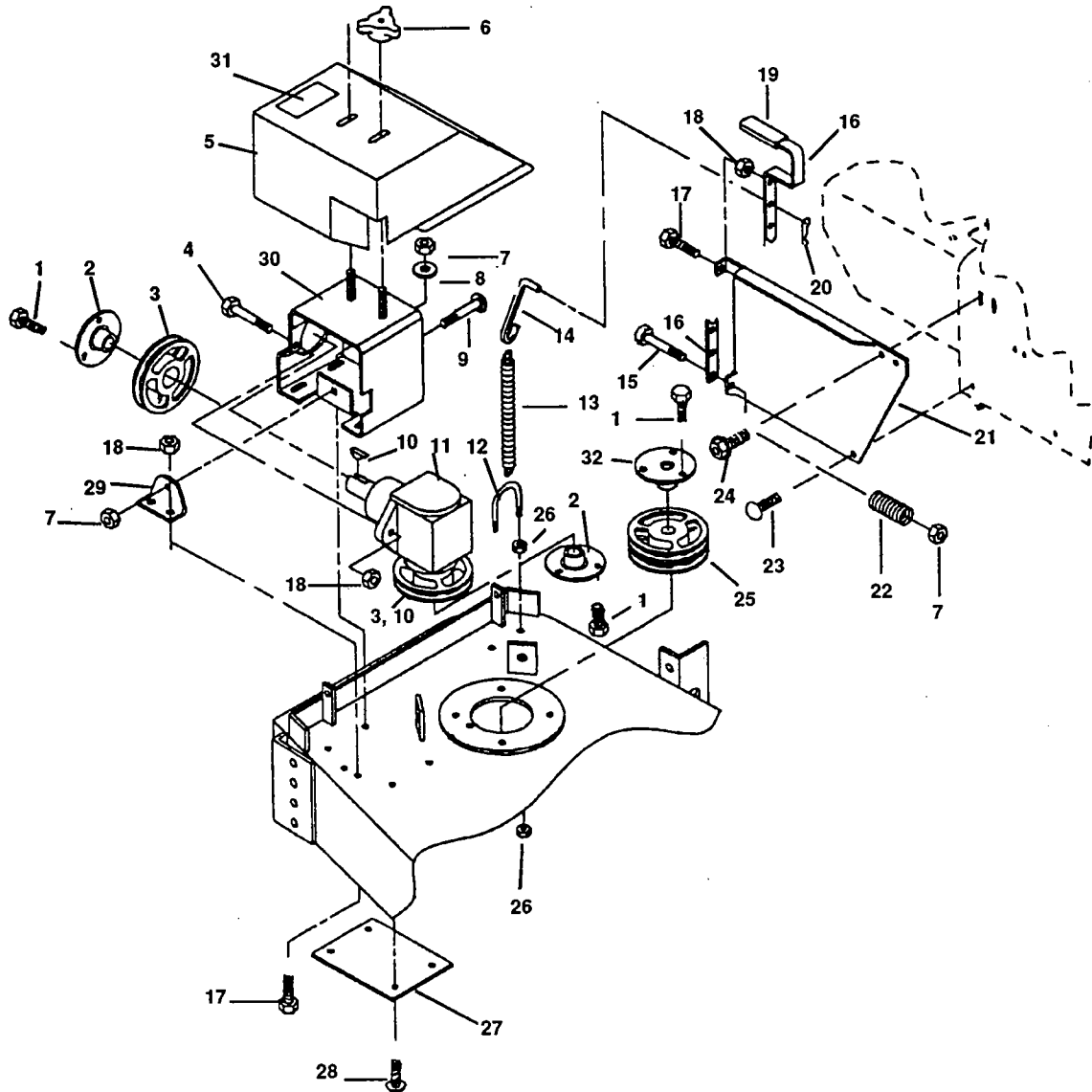
DECK/COUNTER BALANCE COMPONENTS



Ref. No.	Part Number	Description	Ref. No.	Part Number	Description
1	04021-10	Nut, Elastic Stop 5/16-18	14	04062-01	Hair Pin, 3/32 dia. x 1.62"
2	48915	Bearing Assembly	15	421314	Latch
3	421319	Cover Blower Housing	16	04067-04	Ring Pin
4	*	Carriage Bolt 5/16-18 x 3/4"	17	04021-09	Nut, Elastic Stop 3/8-16
5	45491	Fan Weldment	18	04017-27	Capscrew, Serr. Flange 3/8-16 x 1"
6	04063-06	Key	19	421312	Mounting Bracket, Rear
7	04019-03	Nut, Serrated Flange 5/16-18	20	421313	Latch Plate
8	46564	Blower Housing Widmt. w/Decal	21	421310	Mounting Bracket, Front
9	48136-01	Clamp, Hose	22	45493	Mounting Weldment, Front
10	48135-07	Hose, 6" x 48"	23	04062-03	Hair Pin, .148 dia. x 2-3/4"
11	48236	Decal, Danger	24	04041-07	Flat Washer, 3/8 (.391x.938x.105)
12	45496	Blower Mounting Weldment	25	*	Flat Washer, 5/16 (.344x.688x.065)
13	*	Bolt, Hex Head 3/8-16 x 4"			

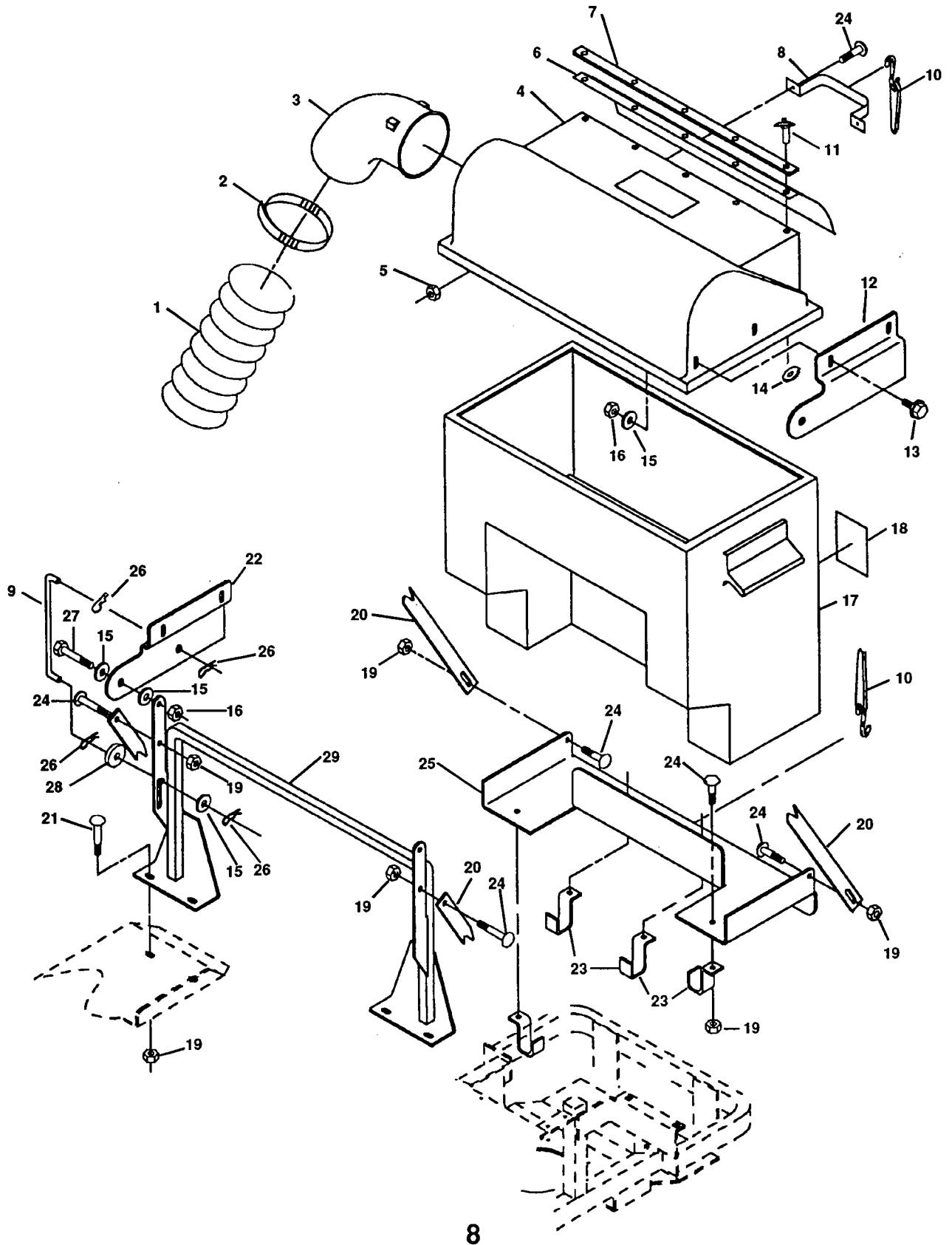
* Common hardware which should be purchased locally. All bolts Grade 5 plated, all other fasteners zinc plated.

DECK/COUNTER BALANCE COMPONENTS



Ref. No.	Part Number	Description	Ref. No.	Part Number	Description
1	*	Bolt, Hex Head 1/4-20 x 3/4"	17	04017-26	Capscrew, 3/8-16 x 3/4" Serr. Flange
2	48248	Tapered Hub, 5/8" Bore	18	04019-04	Nut, 3/8-16 Serr. Flange Hex Head
3	48924	Pulley, 5.8" Tapered Bore	19	48215	Grip, Shift Lever
4	04017-28	Capscrew, 3/8 -16 x 1-1/4" Ser. Fig.	20	04062-01	Hair Pin, .094 x 1.62
5	46559	Belt Cover, w/Decal	21	421345	Mounting Bracket, Counter Balance
6	04029-03	Wingnut, 3/8-16 Non Metallic	22	48050	Spring, Compression
7	04021-09	Nut, 3/8-16 Elastic Stop	23	*	Carriage Bolt, 5/16-18 x 1"
8	04041-07	Flat Washer, 3/8" (391 x .938 x .105)	24	04017-16	Capscrew, 5/16-18 x 3/4" Serr. Flange
9	*	Carriage Bolt, 3/8-16 x 2"	25	48923	Pulley, 5-3/4 Double Groove
10	04063-07	Key, Woodruff #9, 3/16 x 3/4"	26	04019-03	Nut, 5/16" Serrated Flange
11	48919	Gearbox, 90 Degree Drive	27	421325	Reinforcement Plate, Gearbox
12	04100-01	U-Bolt, 5/16-18 x 2.19"	28	*	Carriage Bolt, 3/8-16 x 1-1/4"
13	48755	Extention Spring	29	421324	Anchor Bracket, Tension Bolt
14	44093	Rod, Counter Balance	30	45495	Support Weldment Gear Box
15	04003-05	Carriage Bolt, 3/8-16 x 1-1/2"	31	48073	Decal, Warning
16	421346	Lever, Counter Balance	32	48141	Tapered Hub, 1.00" Bore

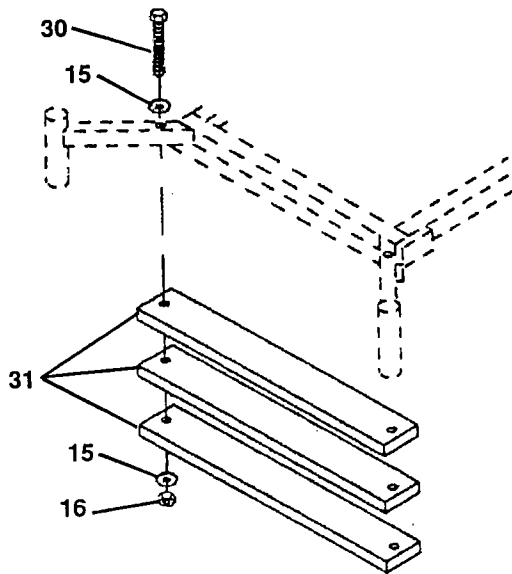
BUCKET SUPPORT COMPONENTS



BUCKET SUPPORT COMPONENTS

Ref. No.	Part Number	Description	Ref. No.	Part Number	Description
1	48135-07	Hose 6" x 48"	16	04021-09	Nut, 3/8-16 Elastic Stop
2	48136-01	Clamp, Hose	17	46563	Hopper, Grass Catcher w/Decal
3	48909	Elbow, Grass Catcher	18	48922	Decal, Hopper
4	46512	Cover Assembly, Grass Catcher, (Includes 6, 7, 11 & 14)	19	04019-03	Nut, 5/16-18 Serr Flange Hex Hd.
5	04021-10	Nut, 5/16" Elastic Stop	20	421309	Brace
6	48928	Deflector, Grass Catcher	21	*	Carriage Bolt 5/16-18 x 1"
7	421348	Backing Plate, Deflector	22	421306	Hinge, RH
8	421300	Handle	23	421308	Clamp, Tray
9	44089	Rod, Cover Support	24	*	Carriage Bolt 5/16-18 x 3/4"
10	48137-03	Strap, Rubber	25	421307	Tray
11	*	Rivet, Pop 3/16"	26	04062-02	Hair Pin, .080 dia x 1.19
12	421305	Hinge, LH	27	*	Bolt, Hex Head 3/8-16 x 1-1/2"
13	04017-27	Capscrew, 3/8-16 x 1" Serr. Flange	28	04041-10	Flat Washer, 3/8" (375 x 2" x .06)
14	*	Washer, Pop Rivet	29	45490	Support Frame Weldment
15	04041-07	Flat Washer, 3/8" (.391 x .938 x .105)	30	04001-100	Bolt, Hex Head 3/8-16 x 6"
			31	42956	Weight Bars

* Common hardware which should be purchased locally. All bolts Grade 5 plated, all other fasteners zinc plated.



WARNING

If incorrectly used, this accessory can cause severe injury. Those who use and maintain the accessory should be trained in its proper use, warned of its dangers, and should read the entire manual before attempting to set up, operate, adjust or service the accessory.

LIMITED WARRANTY-COMMERCIAL ACCESSORY

Any part of the Scag commercial catcher manufactured by Scag and found, in the reasonable judgment of Scag, to be defective in material or workmanship, will be repaired or replaced by an Authorized Scag Service Dealer without charge for parts and labor.

The Scag accessory, including any defective part, must be returned to an Authorized Scag Service Dealer within the warranty period. The expense of delivering the accessory to the dealer for warranty work and the expense of returning it back to the owner after repair or replacement will be paid for by the owner. Scag's responsibility in respect to claims is limited to making the required repairs or replacements, and no claim of breach of warranty shall be cause for cancellation or rescission of the contract of sale of any Scag machine. Proof of purchase will be required by the dealer to substantiate any warranty claim. All warranty work must be performed by an Authorized Scag Service Dealer.

This warranty is limited to 90 days from the date of original retail purchase for any Scag catcher that is used for commercial purposes, or any other income-producing purpose including rental use.

This warranty does not cover any catcher that has been subject to misuse, neglect, negligence, or accident, or that has been operated in any way contrary to the operating instructions as specified in the Technical Manual. The warranty does not apply to any damage to the catcher that is the result of improper maintenance, or to any catcher or parts that have not been assembled or installed as specified in the Technical Manual.

The warranty does not cover any catcher that has been altered or modified. In addition, the warranty does not extend to repairs made necessary by normal wear, or by the use of parts or accessories which, in the reasonable judgment of Scag, are either incompatible with the Scag mower or adversely affect its operation, performance or durability. This warranty does not cover engines and electric starters, which are warranted separately by their manufacturer.

Scag Power Equipment reserves the right to change or improve the design of any accessory without assuming any obligation to modify any accessory previously manufactured.

All other implied warranties are limited in duration to the 90 day warranty period. Accordingly, any such implied warranties including merchantability, fitness for a particular purpose, or otherwise, are disclaimed in their entirety after the expiration of the appropriate ninety day warranty period. Scag's obligation under this warranty is strictly and exclusively limited to the repair or replacement of defective parts and Scag does not assume or authorize anyone to assume for them any other obligation. Some states do not allow limitations on how long an implied warranty lasts, so the above limitation may not apply to you.

Scag assumes no responsibility for incidental, consequential or other damages including, but not limited to, expense for gasoline, expense of delivering the machine to an Authorized Scag Service Dealer and expense of returning it back to the owner, mechanic's travel time, telephone or telegram charges, rental of a like product during the time warranty repairs are being performed, travel, loss or damage to personal property, loss of revenue, loss of use of the mower, loss of time, or inconvenience. Some states do not allow the exclusion or limitation of incidental or consequential damages. So the above limitation or exclusion may not apply to you.

This warranty gives you specific legal rights, and you may also have other rights which vary from state to state.

PLEASE BE CAREFUL

1. Keep all shields in place, especially grass discharge guard.
2. Stop machine and remove spark plug wire before adjusting or servicing machine.
3. When mechanism becomes clogged, stop engine before cleaning.
4. Keep hands, feet and clothing away from power-driven parts.
5. Keep off implement unless seat or platform is provided.
6. Keep others off of the tractor (only one person at a time).

REMEMBER - YOUR MOWER IS ONLY AS SAFE AS THE OPERATOR!

**FAILURE TO FOLLOW CAUTIOUS OPERATING PRACTICES MAY RESULT
IN SERIOUS BODILY INJURY. WE WANT YOU TO CONTINUE TO ENJOY**

AND PROFIT BY USING OUR PRODUCTS.

OWNER REFERENCE

TRACTOR MODEL _____

TRACTOR SERIAL NUMBER _____

CATCHER MODEL _____

CATCHER SERIAL NUMBER _____