



# ***OPERATOR'S MANUAL***



## **FABRIC 3-BAG GRASS CATCHER**

**Model: GC-3B**

This manual contains the operating instructions and safety information for your Scag mower accessory. Reading this manual can provide you with assistance in maintenance and adjustment procedures to keep your mower accessory performing to maximum efficiency. The specific models that this book covers are listed on the inside cover. Before operating your machine, please read all the information enclosed.



# WARNING

## **FAILURE TO FOLLOW SAFE OPERATING PRACTICES MAY RESULT IN SERIOUS INJURY OR DEATH.**

- Read this manual completely as well as other manuals that came with your mower.
- DO NOT operate on steep slopes. To check a slope, attempt to back up it (with the cutter deck down). If the machine can back up the slope without the wheels slipping, reduce speed and use extreme caution.
- Under no circumstances should the machine be operated on slopes greater than 15 degrees. ALWAYS FOLLOW OSHA APPROVED OPERATION.
- Stay two cut widths away from slopes, drop offs, ditches, water and retaining walls.
- DO NOT mow on wet grass. Wet grass reduces traction and steering control.
- Keep all shields in place, especially the grass discharge chute.
- Before performing any maintenance or service, stop the machine and remove the spark plug wire and ignition key.
- If a mechanism becomes clogged, stop the engine before cleaning.
- Keep hands, feet and clothing away from power-driven parts.
- Keep others off the mower (only one person at a time)

## **REMEMBER - YOUR MOWER IS ONLY AS SAFE AS THE OPERATOR!**

**HAZARD CONTROL AND ACCIDENT PREVENTION ARE DEPENDENT UPON THE AWARENESS, CONCERN, PRUDENCE, AND PROPER TRAINING OF THE PERSONNEL INVOLVED IN THE OPERATION, TRANSPORT, MAINTENANCE, AND STORAGE OF THE EQUIPMENT.**

**This manual covers the operating instructions and illustrated parts list for:**

**GC-3B**

**with a serial number of**

**T0600001 to T0699999**

**Always use the entire serial number listed on the serial number tag when referring to this product.**

## GENERAL INFORMATION

### 1.1 INTRODUCTION

This manual has been prepared to provide the information you need to correctly assemble, operate, and maintain this grass catcher. Read it carefully and keep it for future reference.

**THE REPLACEMENT OF ANY PART ON THIS PRODUCT BY OTHER THAN THE MANUFACTURER'S AUTHORIZED REPLACEMENT PART MAY ADVERSELY AFFECT THE PERFORMANCE, DURABILITY OR SAFETY OF THIS PRODUCT.**

**USE OF OTHER THAN ORIGINAL SCAG REPLACEMENT PARTS WILL VOID THE WARRANTY.**

If additional information or service is needed that is not outlined in this manual, please contact your Scag Power Equipment dealer. Scag dealers are trained in the latest service methods and carry a full line of Scag replacement parts.

When ordering parts, always provide the complete model number and serial number of your catcher.

All information provided in this manual is based upon information available at the time of printing. Scag Power Equipment reserves the right to make changes at any time without notice or obligation.

### 1.2 DIRECTION REFERENCE

The "Right" and "Left", "Front" and "Rear" of the machine are referenced from the operator's right and left when seated in the normal operating position and facing the forward travel direction.

### 1.3 SAFETY AND OPERATING INSTRUCTIONS

#### NOTE -

*To avoid personal injury, it is imperative that all safety instructions be observed.*

1. Read this operator's manual and the operator's manual that is supplied with the machine this attachment is used on.

A replacement manual is available from your authorized Scag Service Dealer or by contacting: Scag Power Equipment, Service Department at P.O. Box 152, Mayville, WI 53050. You may also contact us through our website at [www.scag.com](http://www.scag.com). The manual for this grass catcher can be downloaded by using the model and serial number or use the contact form to make your request. Please indicate the complete model and serial number of your Scag product when requesting replacement manuals.

### WARNING

**Do not operate without discharge chute, mulch kit, operator controlled discharge chute (OCDC), or entire grass catcher installed.**

2. Before removing the grass bags, disengage the mower, stop the engine and wait for all movement to stop.
3. Make sure to **ALWAYS** turn the engine **OFF**, remove the key and wait for all movement to stop before servicing or cleaning the mower or the grass catcher.

### DANGER



**ROTATING BLOWER  
BLADES**

**STOP ENGINE BEFORE  
ENTERING CHUTE**

**CONTACT CAN INJURE**

4. Do not modify or alter any component of the grass catcher attachment or mower.
5. Do not allow any passengers to ride on the grass catcher attachment or on the mower.

### 2.1 ASSEMBLY INSTRUCTIONS - CUTTER DECK AND BLOWER COMPONENTS

#### - NOTE -

Use the illustrated parts list as a part number reference when following the assembly instructions.

#### -IMPORTANT-

When installing this grass catcher on a machine, one of the following Installation Kits will be needed to complete the installation.

STC48V/52V - Installation Kit p/n 900Z  
STC61V - Installation Kit p/n 901B

STCII48V/52V - Installation Kit p/n 901E  
STCII61V - Installation Kit p/n 901F

SCZ48V/52V - Installation Kit p/n 901E  
SCZ61V / SCZII61V - Installation Kit p/n 900X

STT52V - Installation Kit p/n 901R  
STT61V - Installation Kit p/n 900X

STTII52V - Installation Kit p/n 901R  
STTII61V - Installation Kit p/n 900X

1. Remove all packaging materials. Lay out the mounting hardware and the catcher assembly parts for easy access. Prepare the work area making sure that it is a clean, safe environment.

## WARNING

Do not operate without discharge chute, mulch kit, operator controlled discharge chute (OCDC), or entire grass catcher installed.

2. Remove the discharge chute from the cutter deck. See Figure 2-1.

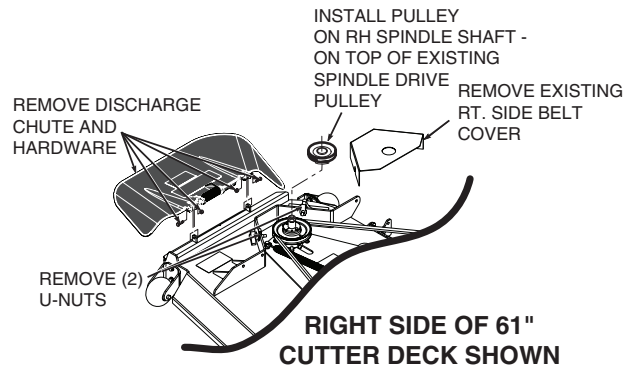
#### - NOTE -

Do not discard the discharge chute or mounting hardware. The discharge chute MUST be reinstalled any time the grass catcher has been removed from the machine.

3. Remove the right side belt cover to gain access to the spindle assembly. Remove the front u-nut from the cutter deck bracket. See Figure 2-1.

#### - NOTE -

Retain the original belt cover. This cover MUST be reinstalled any time the complete catcher system is removed.



(Note: Some parts not shown for viewing purposes.)

Figure 2-1. Discharge Chute Removal

4. Install the grass catcher pulley onto the spindle assembly. Apply "Blue" loctite to both pulley setscrews and tighten. See Figure 2-1.
5. Remove the "Turbo" baffle from the cutter deck. Using the original hardware, install the new "Turbo" baffle. See Figure 2-2.

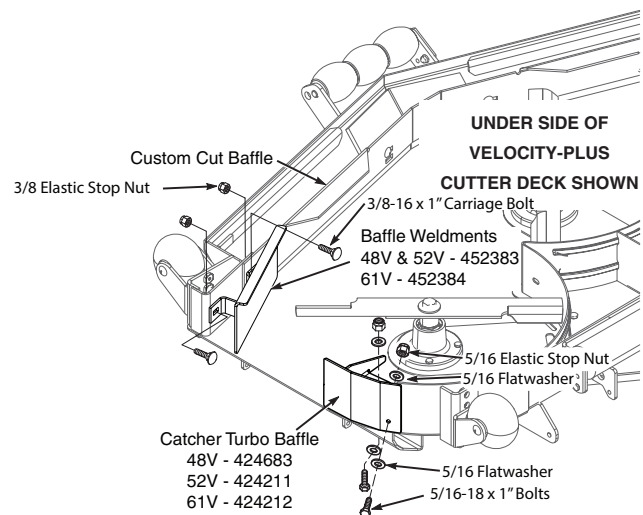


Figure 2-2. Grass Catcher Baffles

#### - NOTE -

Do not discard the original "Turbo" baffle. This baffle may be reinstalled any time the grass catcher has been removed from the machine.

6. Remove the hardware for the custom cut baffle from the mounting hole closest to the discharge opening.

7. Install the grass catcher baffle weldment and secure using 3/8-16 x 1" carriage bolts and 3/8-16 elastic stop nuts. See Figure 2-2.

**-NOTE-**

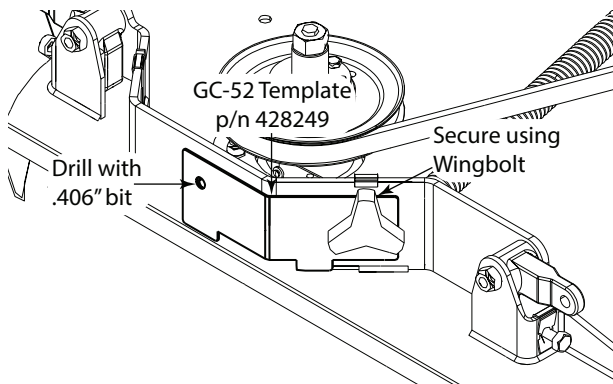
Adjust the "Custom-Cut" baffle installed in the cutter deck to the lowest position to enhance grass catcher performance.

**-IMPORTANT-**

When installing the blower mounting post on STTII-52V machines within serial number range L9900001 to P2499999, it may be necessary to drill an additional mounting hole in the cutter deck support using the template provided (p/n 428249).

All STT-52V models will need a mounting hole to be drilled using the mounting hole template included (p/n 428249).

When drilling the mounting hole, use the front belt cover knob w/ stud to attach the mounting hole template (p/n 428249) to the deck. Refer to Figure 2-3.

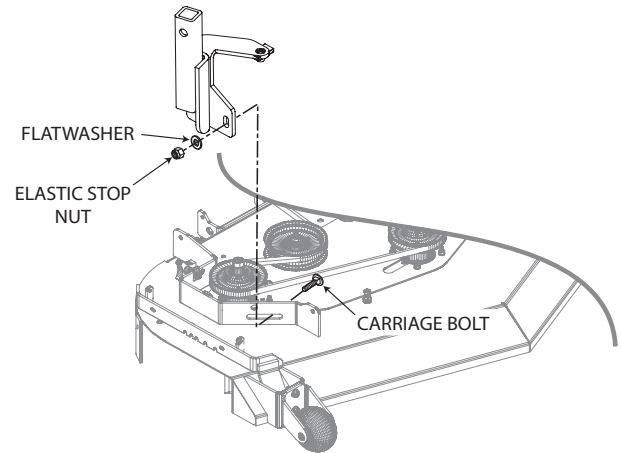


**Figure 2-3. STT/STTII - 52V Mounting Post**

8. Install the blower mounting post to the deck using 3/8-16 x 1-1/4" carriage bolts (p/n 04003-11), 3/8" flatwashers (p/n 04041-07) and 3/8-16 elastic stop nuts (p/n 04021-09). For STT52V & STTII52V use 1/2-13 x 1-1/2" bolts, 1/2" flatwashers and 1/2-13 elastic stop nuts. Do not fully tighten the hardware at this time. See Figure 2-4.

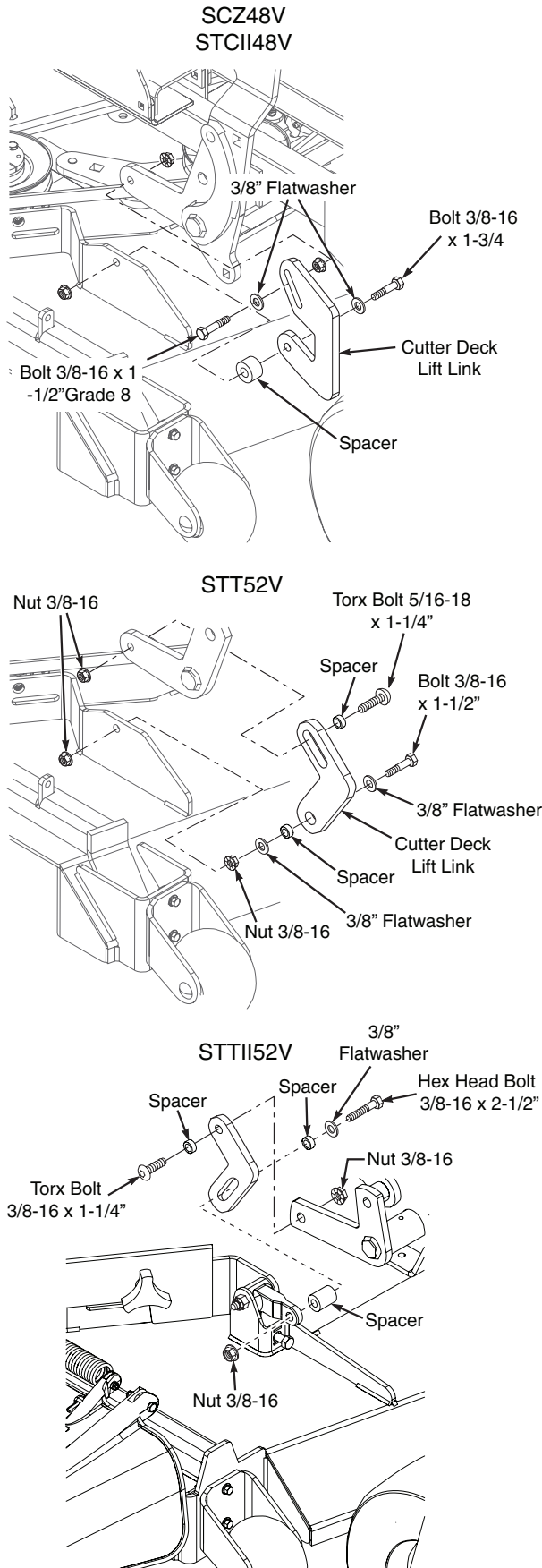
**-NOTE-**

48V / 52V Blower mounting post shown below for reference.



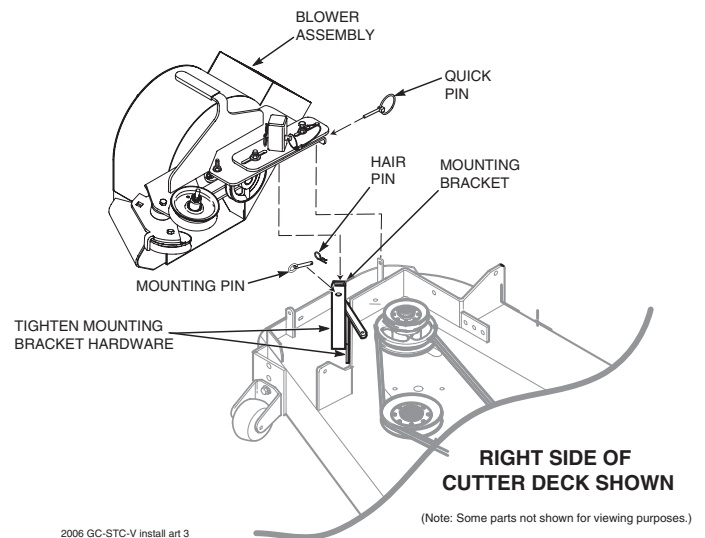
**Figure 2-4. Blower Mounting Post Installation**

9. SCZ48V, STCII48V, STT52V & STTII52V units will need to have the right front cutter deck hanger chain replaced with the cutter deck lift link included with the installation kit. For all other models, proceed to step 12.
10. Remove the cutter deck hang chain and hardware from the right front corner of the cutter deck.
11. Install the cutter deck lift link (SCZ48V & STCII48V p/n 452393, STT52V & STTII52V p/n 423434) and secure using the hardware provided. See Figure 2-5.



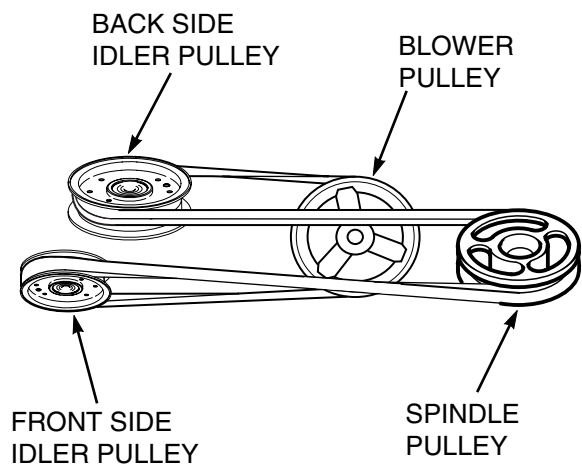
**Figure 2-5. Cutter Deck Lift Link Installation**

12. Install the blower assembly to the mounting bracket and secure with the mounting pin. See Figure 2-6.
13. Align the blower assembly with the discharge opening of the cutter deck. Tighten the hardware for the mounting bracket. See Figure 2-6.
14. Install the quick pin through the rear hole in the discharge chute mounting bracket. See Figure 2-6.



**Figure 2-6. Blower Installation**

15. Install the belt to the spindle pulley. When replacing the belt. See Figure 2-7.



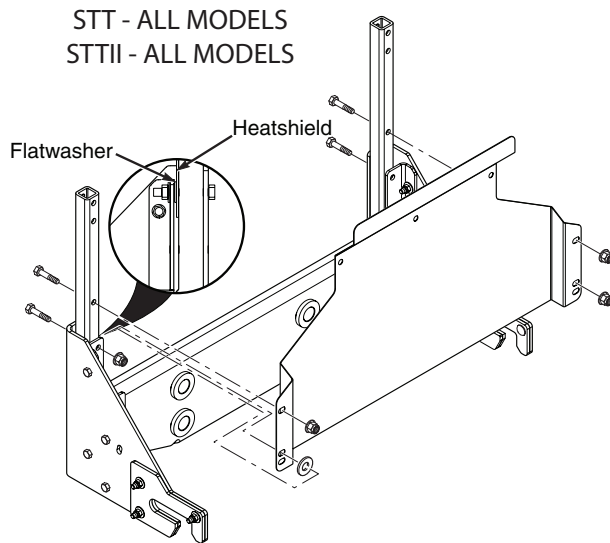
**Figure 2-7. Belt Routing**

16. Install the new belt covers supplied and secure. See items number 1 and number 21 identified on the appropriate Blower Mounting Components page of the illustrated parts section provided in this manual for proper installation.

## Section 2

### 2.2 ASSEMBLY INSTRUCTIONS - HOPPER COMPONENTS

1. For STT & STTII models, a heatshield will need to be added to the lower hopper mounting frame. For all other models, proceed to step 3.
2. Install the heatshield to the lower hopper mounting frame as shown in Figure 2-8. Secure using the hardware provided.



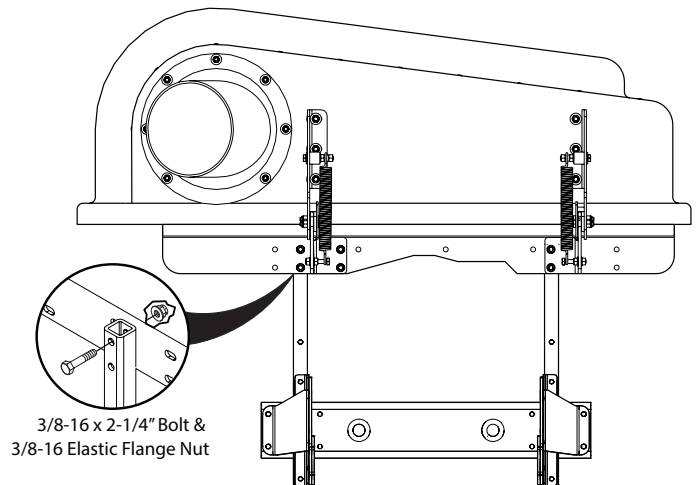
**Figure 2-8. STT & STTII Heatshield Installation**

3. With help from an assistant, install the grass catcher hitch assembly to the hopper assembly. See Figure 2-9.
4. Secure the upright tubes to the hopper support plate using four (4) 3/8-16 x 2-1/4" bolts and four (4) 3/8-16 elastic flange nuts. See Figure 2-9.

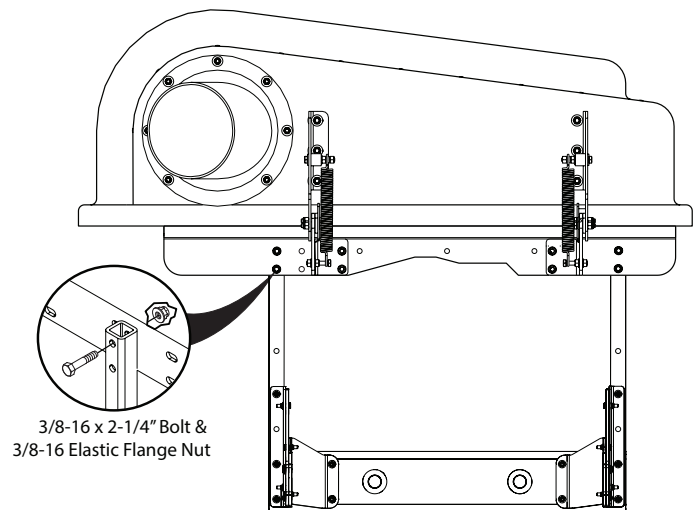
**-NOTE-**

On SCZ / SCZII 61" models, the heatshield shown in Figure 2-8 is not installed. The heatshield is shown for reference only when the GC-3B is installed on STT & STTII models.

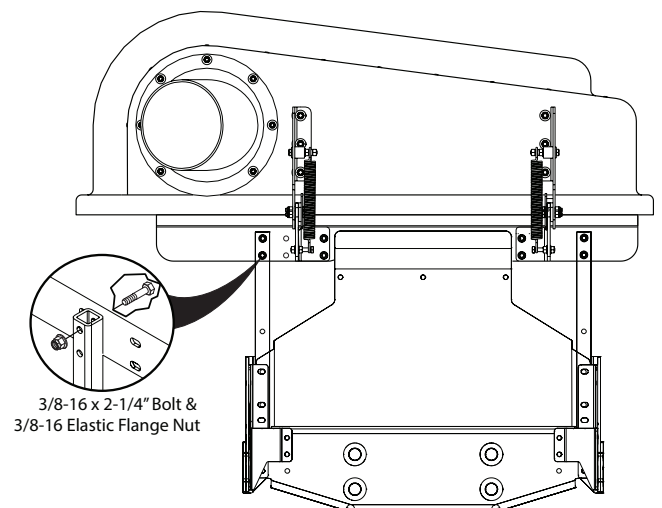
STC - ALL MODELS



SCZ - 48" & 52" MODELS  
STCII - All MODELS

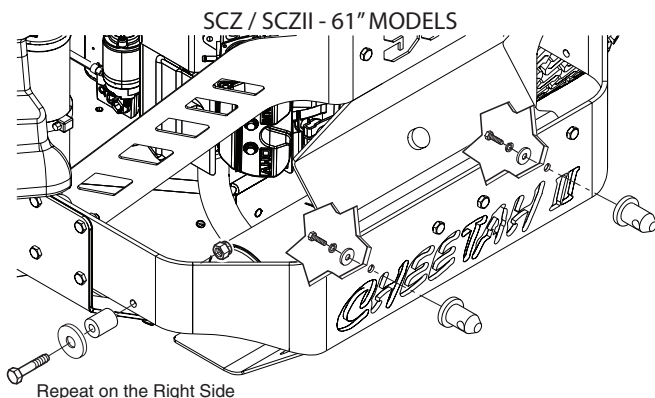
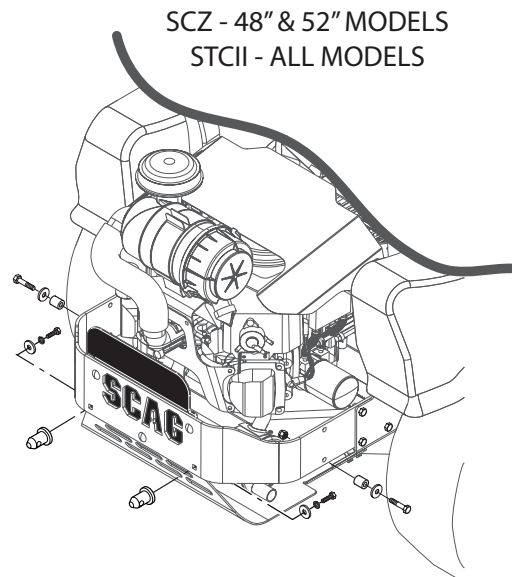
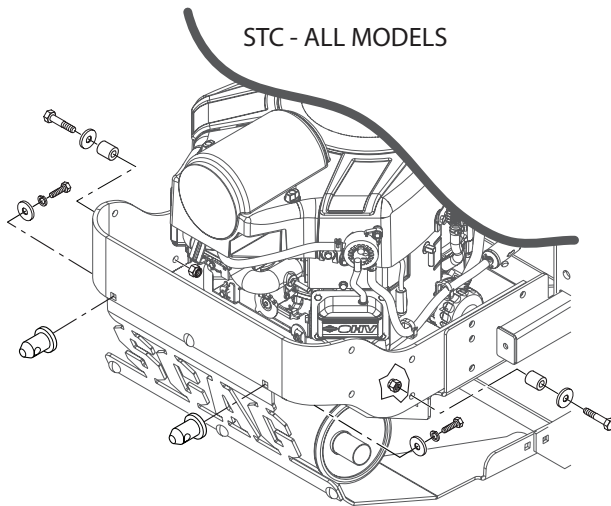


STT & STTII - 52" & 61" MODELS  
SCZ / SCZII - 61" MODELS



**Figure 2-9. Hitch Assembly Installation**

5. For STC, STCII, SCZ and SCZII Models, remove the rear skid plate mounting hardware from the outside two holes. See Figure 2-10 . For STT Models, proceed to step 7.

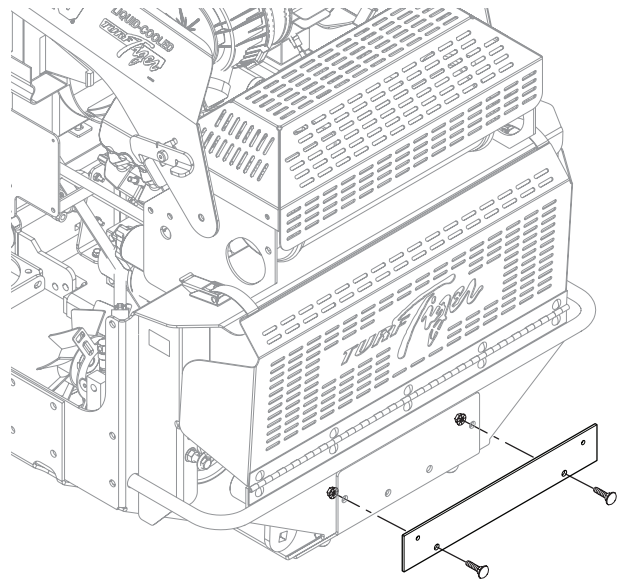


**Figure 2-10. Hopper Mounting Hardware Install**

### - NOTE -

SCZII models equipped with the Kawasaki FX engine may require an exhaust extension (p/n 486660) to be installed. If an exhaust extension is not present on the unit, install (p/n 486660) exhaust extension.

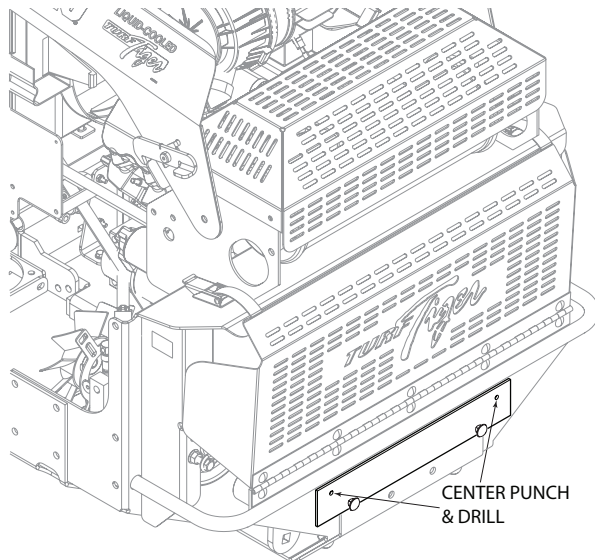
6. Install the mounting pins and spacers on to the rear of the machine as shown. Secure using the hardware provided, use "Blue" loctite on the bolts. See Figure 2-10.
7. For STT Models Only - Holes will need to be drilled in the rear of the machine using the template provided as directed. Note - This is not required for STTII models. Proceed to step 10 for STTII models or step 11 for all other models.
8. Remove the upper mounting hardware from the rear spindle cover and install the template. See Figure 2-11.



**Figure 2-11. STT Hopper Mounting Hole Template**

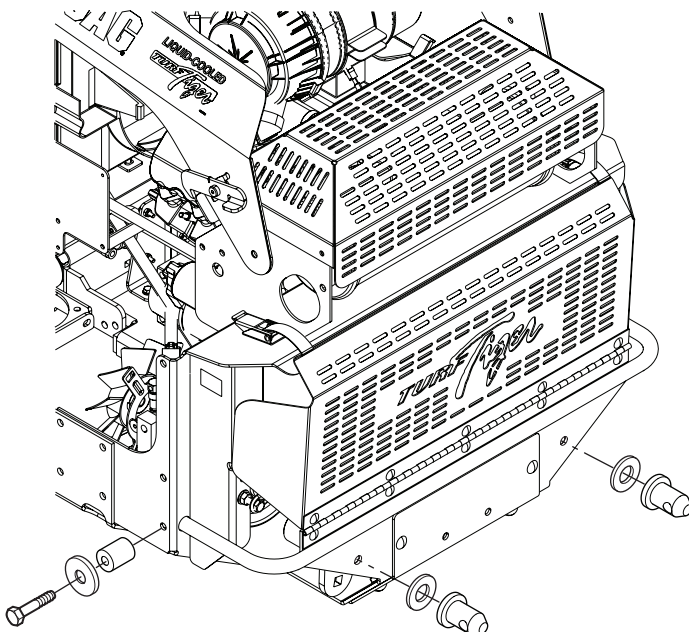
## Section 2

9. Center punch and drill two pilot holes using a 1/4" drill bit. Remove the template and finish drill using a 13/32" (0.406) drill bit. See Figure 2-12.



**Figure 2-12. STT Hopper Mounting Holes**

10. Install the mounting pins and spacers on to the rear of the STT or STTII machine as shown. Secure using the hardware provided, use "Blue" loctite on the bolts. See Figure 2-13.

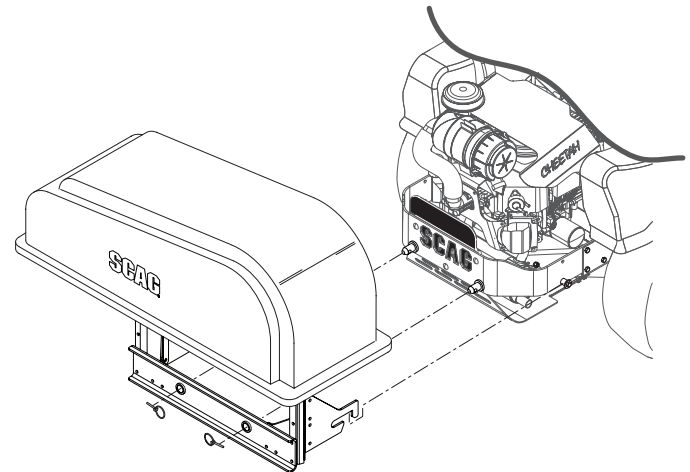


**Figure 2-13. STT / STTII Hopper Mounting Hardware Install**

11. With help from an assistant, install the hopper assembly to the machine and secure with the ring pins. See Figure 2-14.

### -NOTE-

*The model shown in Figure 2-14 is for reference only. The grass catcher installs to all models in a similar fashion.*



**Figure 2-14. Hopper Installation**

12. Install adapter (p/n 461723) to the blower assembly and secure with the strap.

### -NOTE-

#### **STCII Models Equipped With Kohler 23CV & 25CV-EFI Engines**

*When installing this catcher on STCII models equipped with Kohler 23CV or 25CV-EFI engines, it is necessary to install the muffler exhaust extension and clamp included with this kit onto the muffler outlet.*

*Position the extension directing the muffler exhaust down and away from the rear bumper and grass catcher mounting bracket.*

### -NOTE-

*When installing this catcher the discharge hose may need to be shortened. Follow the steps below when required.*

13. Lower the cutter deck on the machine to the lowest cutting height.
14. If required, shorten the hose assembly before securing it to the hood assembly. Route the hose up to the hood assembly and mark the hose length required which will not allow the hose to "sag" or "droop".

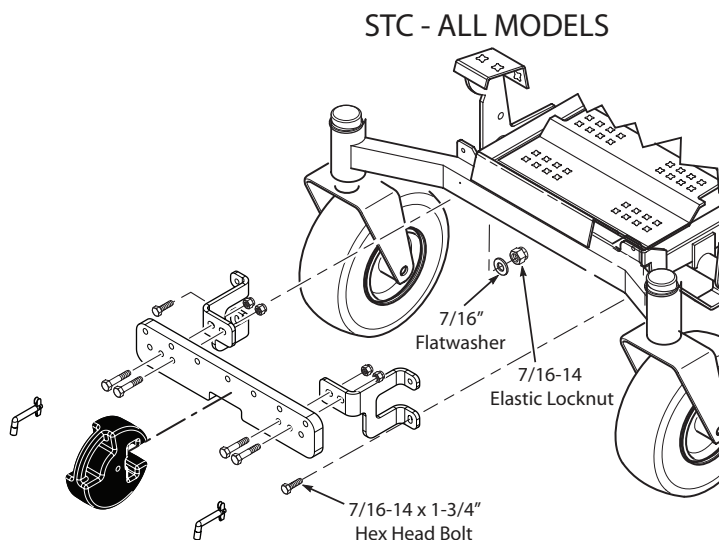
15. Cut the hose to the required length.
16. Install the hose from the blower assembly to the hopper hood. Secure using the 8-1/2" clamps.
17. Install the bag assemblies.

### 2.3 ASSEMBLY INSTRUCTIONS - FRONT WEIGHT COMPONENTS

1. Referring to the machine model, assemble the front weight bar as shown in Figure 2-15 through Figure 2-18.
2. Using the weight support bar as a guide, identify the corresponding mounting holes used to secure the weight support bar to the front of the machine as shown in Figures 2-15 through Figures 2-18.

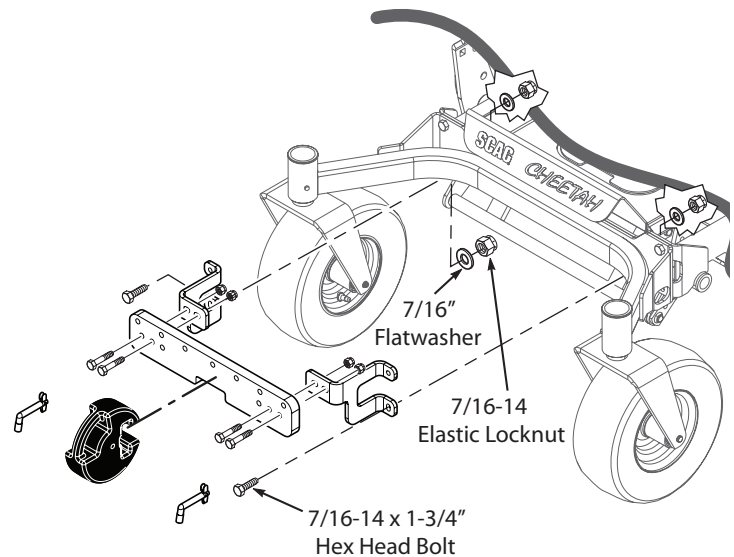
For all STC, STCII, SCZ, SCZII, and STTII models, existing hardware will need to be removed in order to secure the weight support bar to the front of the machine.

3. Install the weights onto the weight bar and secure using 2 pins (p/n 485172) in the outer holes next to the outside weights. See Page 43 for the correct number of weights required.
4. Check all hardware for tightness.
5. Operate and test.



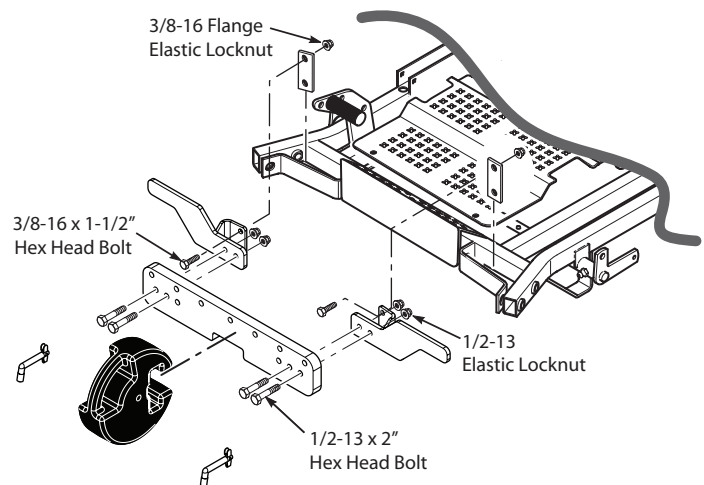
**Figure 2-15. STC Front Weight Bar Installation**

### SCZ 48" & 52" MODELS STCII - ALL MODELS



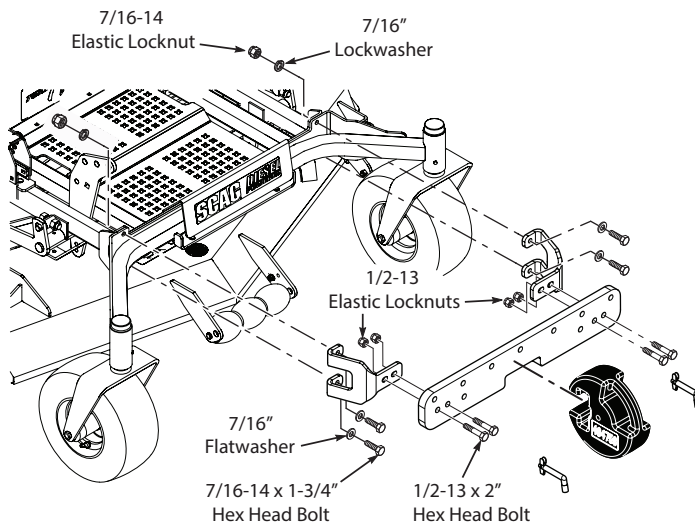
**Figure 2-16. SCZ48/52" & STCII Front Weight Bar Install**

### STT MODELS



**Figure 2-17. STT Front Weight Bar Installation**

STT - Diesel  
SCZ / SCZII 61" - MODELS  
STTII 52" & 61" - MODELS



**Figure 2-18. STT-Diesel, STTII, SCZ & SCZII 61" Weight Bar Install**

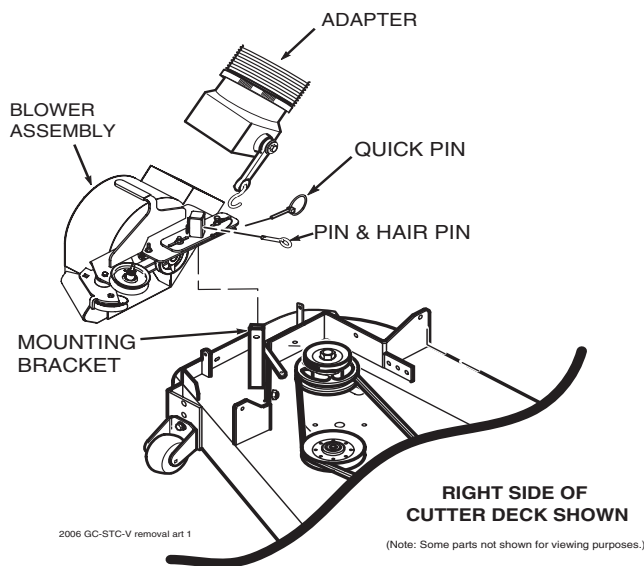
### 3.1 GRASS CATCHER REMOVAL INSTRUCTIONS

Prepare the machine so there is easy and safe access to the work area. Park the machine on a flat, level surface and apply the parking brake. Remove the ignition key and disconnect the positive and negative cables from the battery. Maintain all safety related work procedures. Always wear hand and eye protection.

#### - NOTE -

For best overall performance and dispersal of grass clippings while side discharging, the grass catcher discharge baffle should be removed and the original turbo baffle should be reinstalled.

1. Remove the rubber strap holding the adapter to the blower assembly and the large quick pin securing the blower to the discharge mounting bracket. See Figure 3-1.
2. Remove the belt, pin, hair pin and large quick pin securing the blower assembly to the cutter deck and remove the blower assembly. See Figure 3-1.



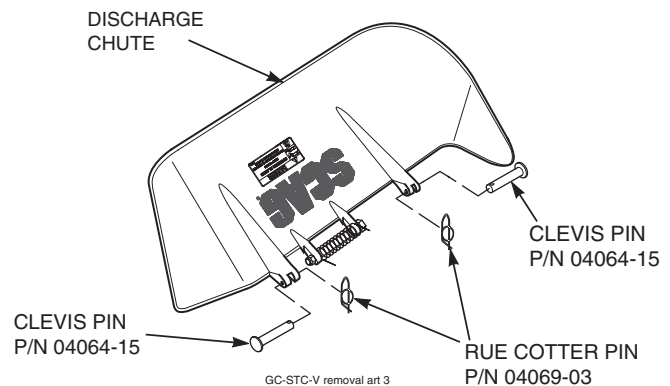
**Figure 3-1. Removing the Blower Assembly**

3. Remove the ring pins securing the hopper assembly to the rear of the machine.
4. With help from an assistant, remove the hopper assembly.

## WARNING

**Do not operate without discharge chute, mulch kit, operator controlled discharge chute (OCDC), or entire grass catcher installed.**

5. Re-install the side discharge chute to the opening on the cutter deck. Replace the two (2) outside mounting bolts on the discharge chute with the clevis pins (p/n 04064-15) and rue cotter pins (p/n 04069-03). See Figure 3-2.
6. Re-install the cutter deck belt cover.
7. Remove the weights from the weight bar.



**Figure 3-2. Reinstalling the Discharge Chute**

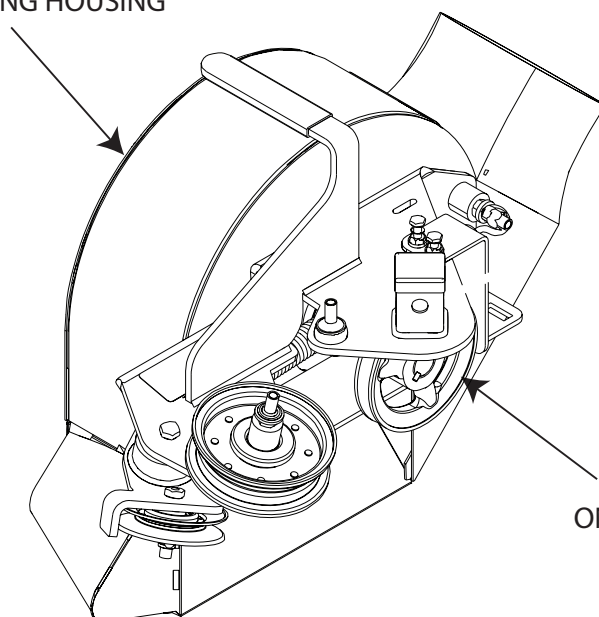
## MAINTENANCE

### 4.1 MAINTENANCE CHART - RECOMMENDED SERVICE INTERVALS

Break-In (First 10)	HOURS						Procedure	Comments
	8	20	40	100	200	500		
X							Check all hardware for tightness	
X							Inspect hose and adapter	
X							Check belt for proper alignment	
X							Inspect fabric bags	
	X						*Check screen in hopper	Remove debris from screen
	X						Inspect hose and adapter	
	X						Inspect fabric bags	
	X						Check condition of blower	
	X						*Apply grease to blower bearings	See figure below
		X					Check belt for proper alignment	

\* Perform these maintenance procedures more frequently under extreme dusty or dirty conditions.

GREASE FITTING  
ON BEARING HOUSING



GREASE FITTING  
ON BEARING HOUSING  
BEHIND PULLEY

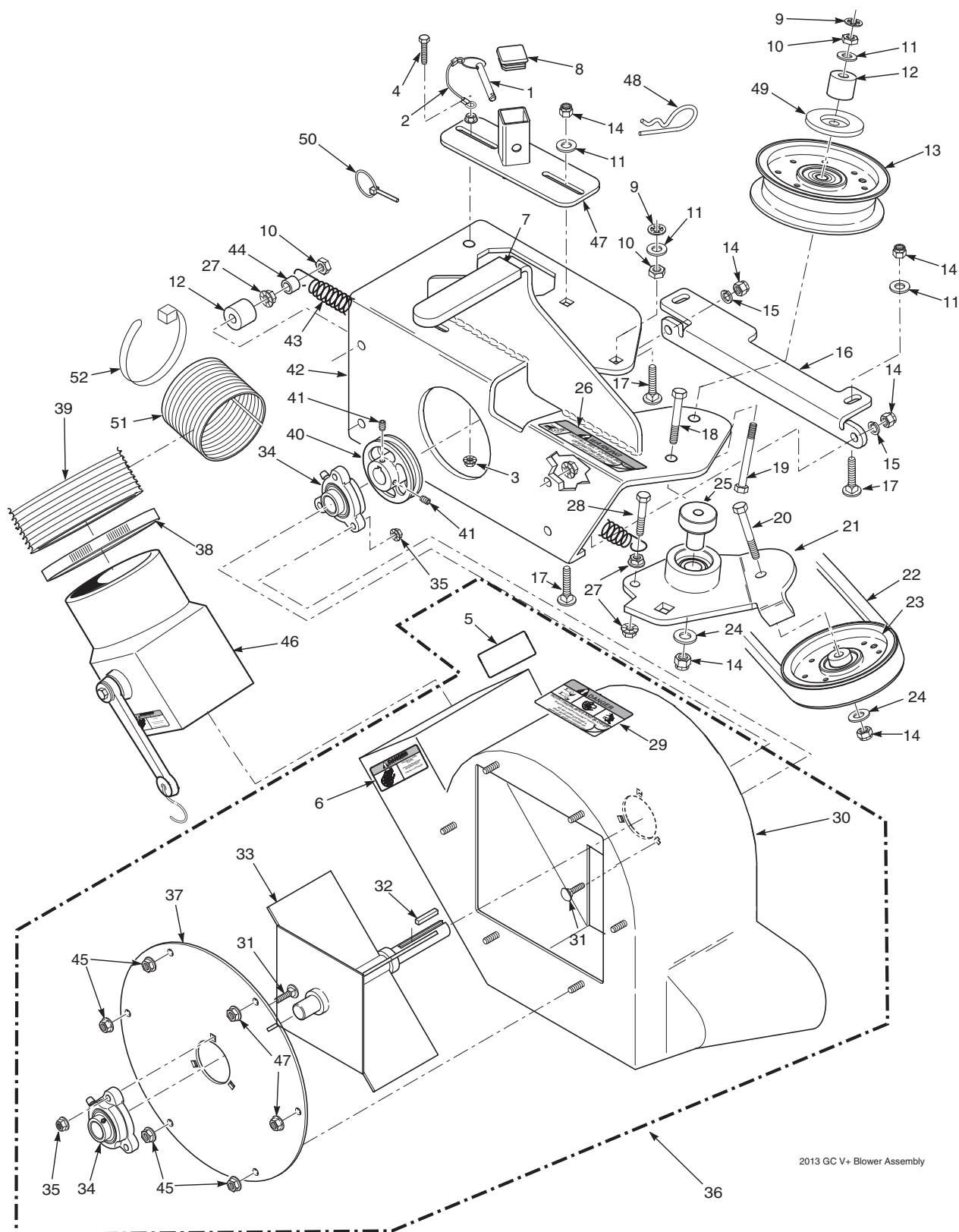
**NOTES**

## **ILLUSTRATED PARTS LIST**

### **4.1 SCAG APPROVED ATTACHMENTS AND ACCESSORIES.**

Attachments and accessories manufactured by companies other than Scag Power Equipment are not approved for use on this machine.

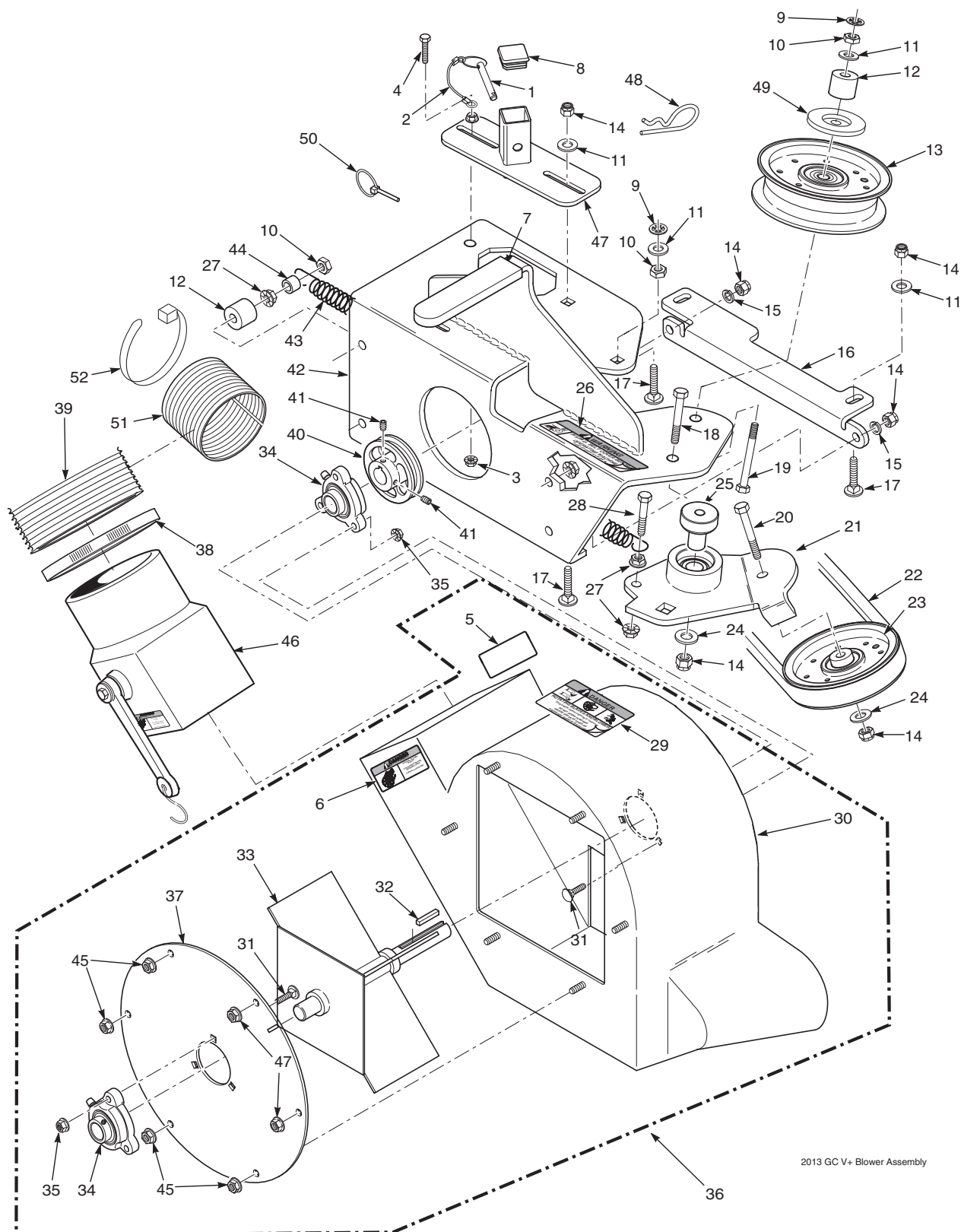
### STC 48"/52" BLOWER HOUSING ASSEMBLY



## STC 48"/52" BLOWER HOUSING ASSEMBLY

Ref. No.	Part No.	Description
1	04067-07	Pin, Ring 2-1/4" Long
2	481547	Lanyard, Deck Height Pin
3	04019-02	Nut, Serr. Flange 1/4-20
4	04019-02	Bolt, Hex Head 1/4-20 x 1-1/4"
5	483392	Decal, Blower
6	483393	Decal, Rotating Blower
7	481428	Grip, Blower Lever
8	483223	Cap, Square
9	04024-02	Nut, Push On 3/8 Thread
10	04021-05	Lock Nut, 3/8-16
11	04041-07	Flatwasher, 3/8-.391 x .938 x .105
12	43277	Spacer
13	483209	Pulley, Idler 4" Dia.
14	04021-09	Nut, Elastic Stop 3/8-16
15	04030-04	Lockwasher, 3/8-16
16	424361	Plate, Catcher Mounting
17	04003-05	Bolt, Carr. 3/8-16 x 1-1/2"
18	04001-54	Bolt, Hex Head 3/8-16 x 3" - 52"
19	04001-81	Bolt, Hex Head 3/8-16 x 3-1/2"
20	04001-21	Bolt, Hex Head 3/8-16 x 1-3/4"
21	461928	Idler Arm Assembly
22	482379	Belt, GC-STC
23	483189	Pulley, 3-1/2" O.D., GC-STC
24	04043-04	Washer, 3/8 Hardened
25	43503	Pivot, Idler
26	483402	Decal, Belt Cover
27	04019-04	Nut, Serr. Flange 3/8-16
28	04001-136	Bolt, Hex Head 3/8-16 x 1-1/2 Gr. 8
29	483391	Decal, Danger
30	461931	Blower Housing Weldment
31	04003-12	Bolt, Carr. 5/16-18 x 3/4" Gr. 5
32	04063-06	Key, 1/4 x 1/4 x 1-1/2"
33	461796	Fan Weldment
34	483034	Bearing Assembly
35	04021-10	Nut, Elastic Stop 5/16-18
36	461930	Blower Housing Assembly
37	421319	Cover, Blower Housing
38	48136-02	Clamp, 8-5/8" Max Dia.
39	462536	Hose, 8.00" Dia. x 53" Long (incl. #51, 52)
40	482298	Pulley, 4-3/4" O.D. - 1" Bore
41	04012-04	Set Screw, 5/16-18 x 3/8"
42	461932	Frame, Blower Mount
43	481522	Spring, Main Drive
44	43212	Spacer
45	04019-03	Nut, Serr. Flange 5/16-18
46	461723	Adapter w/Strap
47	451821	Receiver Weldment, Mounting Post
48	04062-04	Hair Pin Cotter, .177 x 3-1/4"
49	424367	Dust Shield
50	04066-04	Quick Pin, 5/16" Dia.
51	48135-16	Hose, 8" Dia. x 24" Split
52	48028-11	Cable Tie, .345 X 31.5 Black

### STCII 48"/52" & SCZ 48"/52" BLOWER HOUSING ASSEMBLY

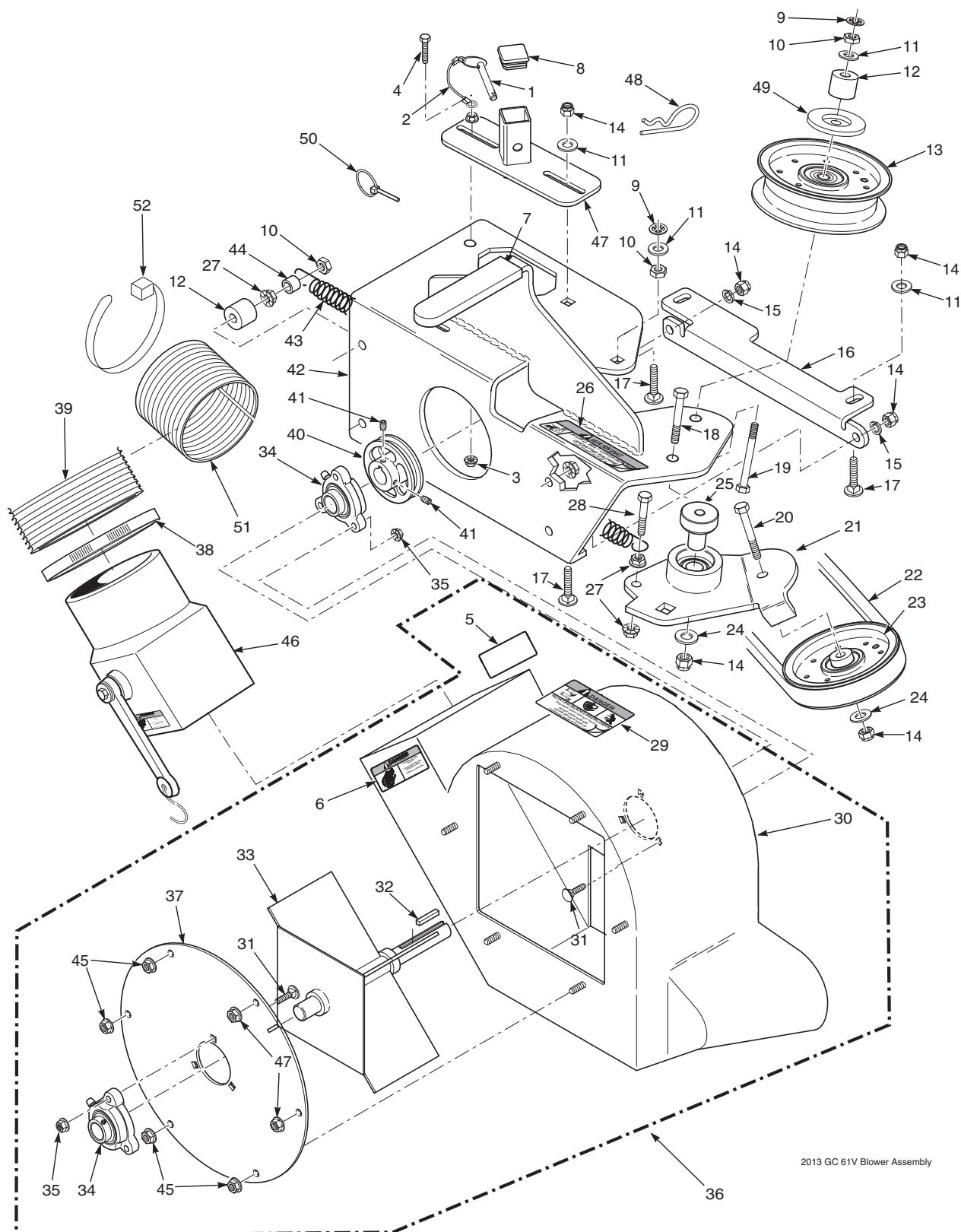


2013 GC V+ Blower Assembly

## STCII 48"/52" & SCZ 48"/52" BLOWER HOUSING ASSEMBLY

Ref. No.	Part No.	Description
1	04067-07	Pin, Ring 2-1/4" Long
2	481547	Lanyard, Deck Height Pin
3	04019-02	Nut, Serr. Flange 1/4-20
4	04019-02	Bolt, Hex Head 1/4-20 x 1-1/4"
5	483392	Decal, Blower
6	483393	Decal, Rotating Blower
7	481428	Grip, Blower Lever
8	483223	Cap, Square
9	04024-02	Nut, Push On 3/8 Thread
10	04021-05	Lock Nut, 3/8-16
11	04041-07	Flatwasher, 3/8-.391 x .938 x .105
12	43277	Spacer
13	483173	Pulley, Idler 3-1/2" Dia.
14	04021-09	Nut, Elastic Stop 3/8-16
15	04030-04	Lockwasher, 3/8-16
16	424361	Plate, Catcher Mounting
17	04003-05	Bolt, Carr. 3/8-16 x 1-1/2"
18	04001-54	Bolt, Hex Head 3/8-16 x 3" - 52"
19	04001-81	Bolt, Hex Head 3/8-16 x 3-1/2"
20	04001-21	Bolt, Hex Head 3/8-16 x 1-3/4"
21	461939	Idler Arm Assembly
22	483327	Belt, GC-SCZ-48V / STCII-48V
	484728	Belt, GC-SCZ-52V / STCII-52V
23	483189	Pulley, 3-1/2" O.D.
24	04043-04	Washer, 3/8 Hardened
25	43503	Pivot, Idler
26	483402	Decal, Belt Cover
27	04019-04	Nut, Serr. Flange 3/8-16
28	04001-136	Bolt, Hex Head 3/8-16 x 1-1/2 Gr. 8
29	483391	Decal, Danger
30	461931	Blower Housing Weldment
31	04003-12	Bolt, Carr. 5/16-18 x 3/4" Gr. 5
32	04063-06	Key, 1/4 x 1/4 x 1-1/2"
33	461796	Fan Weldment
34	483034	Bearing Assembly
35	04021-10	Nut, Elastic Stop 5/16-18
36	461930	Blower Housing Assembly
37	421319	Cover, Blower Housing
38	48136-02	Clamp, 8-5/8" Max Dia.
39	462536	Hose, 8.00" Dia. x 53" Long (incl. #51, 52)
40	482298	Pulley, 4-3/4" O.D. - 1" Bore
41	04012-04	Set Screw, 5/16-18 x 3/8"
42	462553	Frame, Blower Mount
43	481522	Spring, Main Drive
44	43212	Spacer
45	04019-03	Nut, Serr. Flange 5/16-18
46	461723	Adapter w/Strap
47	451821	Receiver Weldment, Mounting Post
48	04062-04	Hair Pin Cotter, .177 x 3-1/4"
49	424367	Dust Shield
50	04066-04	Quick Pin, 5/16" Dia.
51	48135-16	Hose, 8" Dia. x 24" Split
52	48028-11	Cable Tie, .345 X 31.5 Black

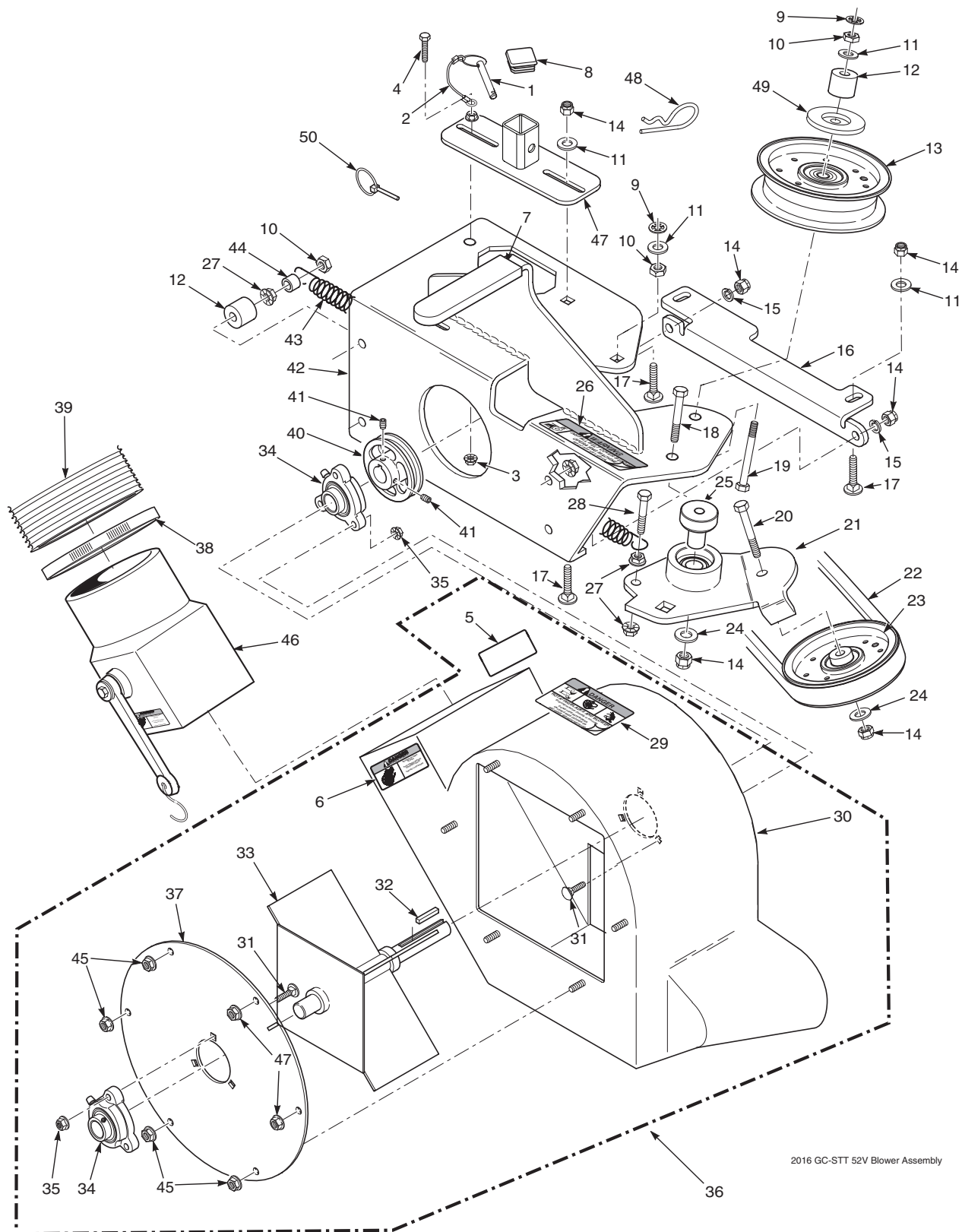
### STC-61" & STCII-61" BLOWER HOUSING ASSEMBLY



## STC-61" & STCII-61" BLOWER HOUSING ASSEMBLY

Ref. No.	Part No.	Description
1	04067-07	Pin, Ring 2-1/4" Long
2	481547	Lanyard, Deck Height Pin
3	04019-02	Nut, Serr. Flange 1/4-20
4	04001-59	Bolt, Hex Head 1/4-20 x 1-1/4"
5	483392	Decal, Blower
6	483393	Decal, Rotating Blower
7	481428	Grip, Blower Lever
8	483223	Cap, Square
9	04024-02	Nut, Push On 3/8 Thread
10	04021-05	Lock Nut, 3/8-16
11	04041-07	Flatwasher, 3/8-.391 x .938 x .105
12	43277	Spacer
13	483209	Pulley, Idler 4" Dia.
14	04021-09	Nut, Elastic Stop 3/8-16
15	04030-04	Lockwasher, 3/8-16
16	424361	Plate, Catcher Mounting
17	04003-05	Bolt, Carr. 3/8-16 x 1-1/2"
18	04001-54	Bolt, Hex Head 3/8-16 x 3" - 52"
19	04001-81	Bolt, Hex Head 3/8-16 x 3-1/2"
20	04001-21	Bolt, Hex Head 3/8-16 x 1-3/4"
21	461928	Idler Arm Assembly
22	483182	Belt, GC-STC-61V / STCII-61V
23	483189	Pulley, 3-1/2" O.D.
24	04043-04	Washer, 3/8 Hardened
25	43575	Pivot, Idler
26	483402	Decal, Belt Cover
27	04019-04	Nut, Serr. Flange 3/8-16
28	04001-136	Bolt, Hex Head 3/8-16 x 1-1/2 Gr. 8
29	483391	Decal, Danger
30	461931	Blower Housing Weldment
31	04003-12	Bolt, Carr. 5/16-18 x 3/4" Gr. 5
32	04063-06	Key, 1/4 x 1/4 x 1-1/2"
33	461796	Fan Weldment
34	483034	Bearing Assembly
35	04021-10	Nut, Elastic Stop 5/16-18
36	461930	Blower Housing Assembly
37	421319	Cover, Blower Housing
38	48136-02	Clamp, 8-5/8" Max Dia.
39	462537	Hose, 8.00" Dia. x 60-1/2" Long (incl. # 51, 52)
40	482298	Pulley, 4-3/4" O.D. - 1" Bore
41	04012-04	Set Screw, 5/16-18 x 3/8"
42	461932	Frame, Blower Mount
43	481522	Spring, Main Drive
44	43212	Spacer
45	04019-03	Nut, Serr. Flange 5/16-18
46	461723	Adapter w/Strap
47	451821	Receiver Weldment, Mounting Post
48	04062-04	Hair Pin Cotter, .177 x 3-1/4"
49	424367	Dust Shield
50	04066-04	Quick Pin, 5/16" Dia.
51	48135-16	Hose, 8" Dia. x 24" Split
52	48028-11	Cable Tie, .345 X 31.5 Black

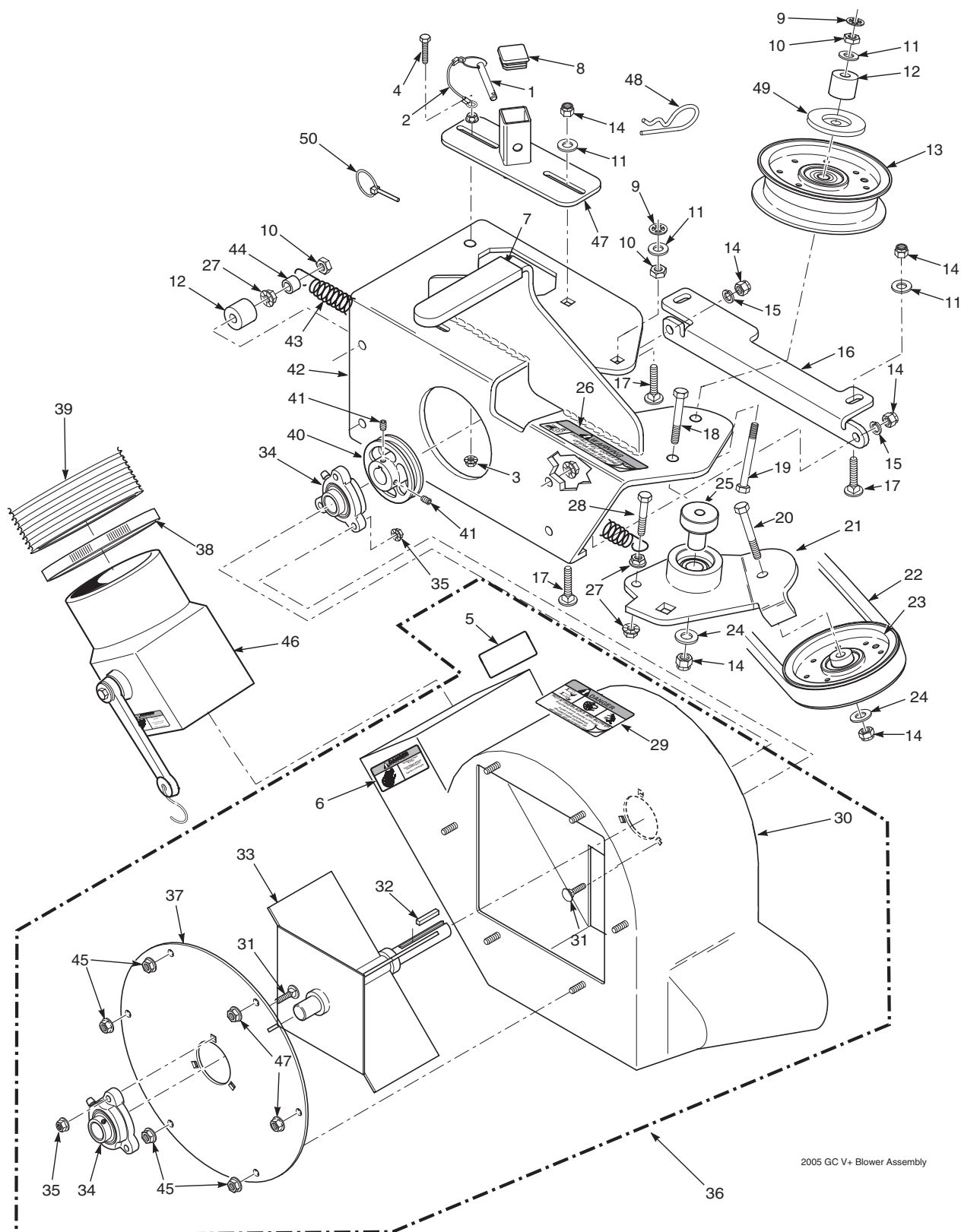
### STT-52" / STTII-52" BLOWER HOUSING ASSEMBLY



## STT-52" / STTII-52" BLOWER HOUSING ASSEMBLY

Ref. No.	Part No.	Description
1	04067-07	Pin, Ring 2-1/4" Long
2	481547	Lanyard, Deck Height Pin
3	04019-02	Nut, Serr. Flange 1/4-20
4	04001-59	Bolt, Hex Head 1/4-20 x 1-1/4"
5	483392	Decal, Blower
6	483393	Decal, Rotating Blower
7	481428	Grip, Blower Lever
8	483223	Cap, Square
9	04024-02	Nut, Push On 3/8 Thread
10	04021-05	Lock Nut, 3/8-16
11	04041-07	Flatwasher, 3/8-.391 x .938 x .105
12	43277	Spacer
13	483173	Pulley, Idler 3-1/2" Dia.
14	04021-09	Nut, Elastic Stop 3/8-16
15	04030-04	Lockwasher, 3/8-16
16	424361	Plate, Catcher Mounting
17	04003-05	Bolt, Carr. 3/8-16 x 1-1/2"
18	04001-54	Bolt, Hex Head 3/8-16 x 3" - 52"
19	04001-81	Bolt, Hex Head 3/8-16 x 3-1/2"
20	04001-21	Bolt, Hex Head 3/8-16 x 1-3/4"
21	461939	Idler Arm Assembly
22	483327	Belt, GC-STT-52V / STTII-52V
23	483189	Pulley, 3-1/2" O.D., GC-STC
24	04043-04	Washer, 3/8 Hardened
25	43504	Pivot, Idler
26	483402	Decal, Belt Cover
27	04019-04	Nut, Serr. Flange 3/8-16
28	04001-136	Bolt, Hex Head 3/8-16 x 1-1/2 Gr. 8
29	483391	Decal, Danger
30	461931	Blower Housing Weldment
31	04003-12	Bolt, Carr. 5/16-18 x 3/4" Gr. 5
32	04063-06	Key, 1/4 x 1/4 x 1-1/2"
33	461796	Fan Weldment
34	483034	Bearing Assembly
35	04021-10	Nut, Elastic Stop 5/16-18
36	461930	Blower Housing Assembly
37	421319	Cover, Blower Housing
38	48136-02	Clamp, 8-5/8" Max Dia.
39	462538	Hose, 8.00" Dia. x 68" Long
40	482298	Pulley, 4-3/4" O.D. - 1" Bore
41	04012-04	Set Screw, 5/16-18 x 3/8"
42	461932	Frame, Blower Mount
43	481522	Spring, Main Drive
44	43212	Spacer
45	04019-03	Nut, Serr. Flange 5/16-18
46	461723	Adapter w/Strap
47	451822	Receiver Weldment, Mounting Post
48	04062-04	Hair Pin Cotter, .177 x 3-1/4"
49	424367	Dust Shield
50	04066-04	Quick Pin, 5/16" Dia.

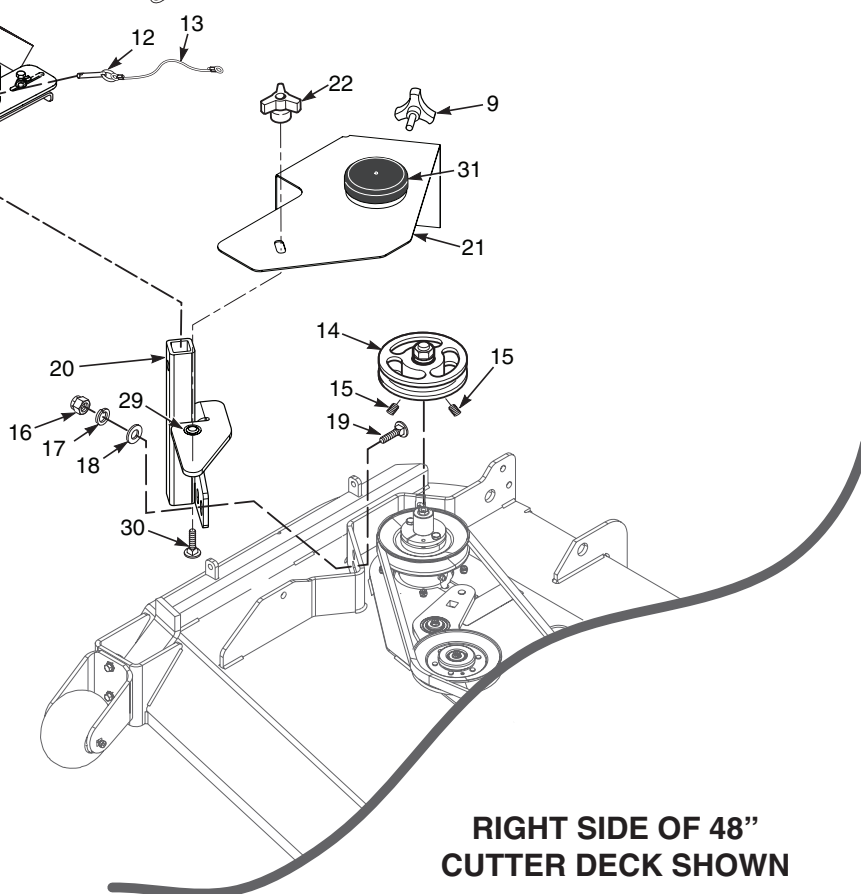
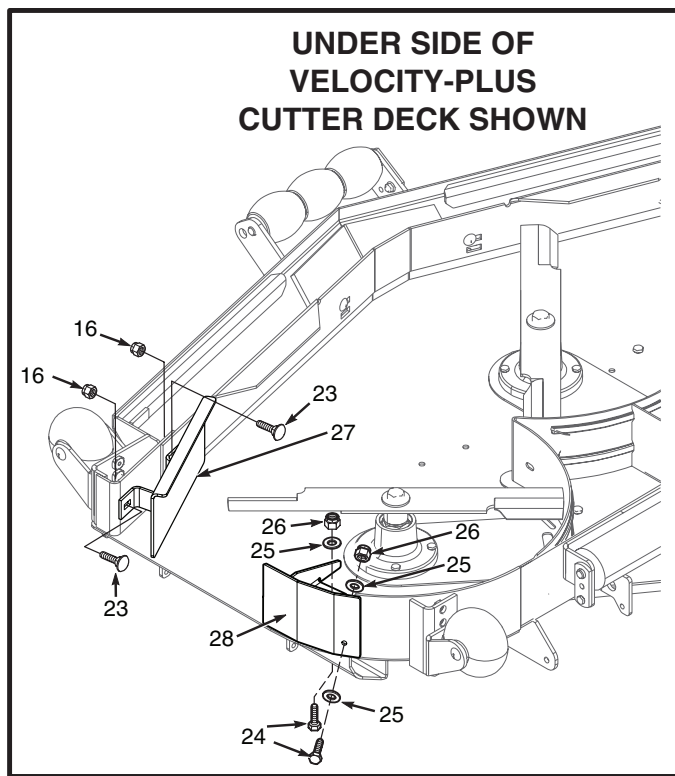
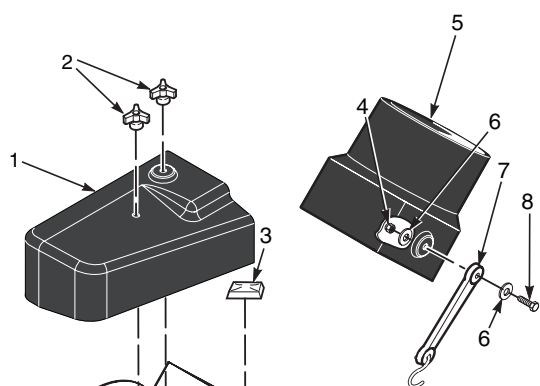
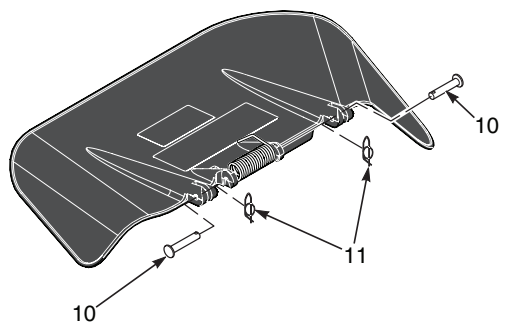
### STT-61" / STTII-61" & SCZ-61" / SCZII-61" BLOWER HOUSING ASSEMBLY



## STT-61" / STTII-61" & SCZ-61" / SCZII-61" BLOWER HOUSING ASSEMBLY

Ref. No.	Part No.	Description
1	04067-07	Pin, Ring 2-1/4" Long
2	481547	Lanyard, Deck Height Pin
3	04019-02	Nut, Serr. Flange 1/4-20
4	04001-59	Bolt, Hex Head 1/4-20 x 1-1/4"
5	483392	Decal, Blower
6	483393	Decal, Rotating Blower
7	481428	Grip, Blower Lever
8	483223	Cap, Square
9	04024-02	Nut, Push On 3/8 Thread
10	04021-05	Lock Nut, 3/8-16
11	04041-07	Flatwasher, 3/8-.391 x .938 x .105
12	43277	Spacer
13	483209	Pulley, Idler 4" Dia.
14	04021-09	Nut, Elastic Stop 3/8-16
15	04030-04	Lockwasher, 3/8-16
16	424361	Plate, Catcher Mounting
17	04003-05	Bolt, Carr. 3/8-16 x 1-1/2"
18	04001-54	Bolt, Hex Head 3/8-16 x 3" - 52"
19	04001-81	Bolt, Hex Head 3/8-16 x 3-1/2"
20	04001-21	Bolt, Hex Head 3/8-16 x 1-3/4"
21	461928	Idler Arm Assembly
22	483182	Belt, GC-61V
23	483189	Pulley, 3-1/2" O.D.
24	04043-04	Washer, 3/8 Hardened
25	43575	Pivot, Idler
26	483402	Decal, Belt Cover
27	04019-04	Nut, Serr. Flange 3/8-16
28	04001-136	Bolt, Hex Head 3/8-16 x 1-1/2 Gr. 8
29	483391	Decal, Danger
30	461931	Blower Housing Weldment
31	04003-12	Bolt, Carr. 5/16-18 x 3/4" Gr. 5
32	04063-06	Key, 1/4 x 1/4 x 1-1/2"
33	461796	Fan Weldment
34	483034	Bearing Assembly
35	04021-10	Nut, Elastic Stop 5/16-18
36	461930	Blower Housing Assembly
37	421319	Cover, Blower Housing
38	48136-02	Clamp, 8-5/8" Max Dia.
39	462538	Hose, 8.00" Dia. x 68" Long
40	482298	Pulley, 4-3/4" O.D. - 1" Bore
41	04012-04	Set Screw, 5/16-18 x 3/8"
42	461932	Frame, Blower Mount
43	481522	Spring, Main Drive
44	43212	Spacer
45	04019-03	Nut, Serr. Flange 5/16-18
46	461723	Adapter w/Strap
47	451821	Receiver Weldment, Mounting Post
48	04062-04	Hair Pin Cotter, .177 x 3-1/4"
49	424367	Dust Shield
50	04066-04	Quick Pin, 5/16" Dia.

### STC 48"/52" BLOWER MOUNTING COMPONENTS

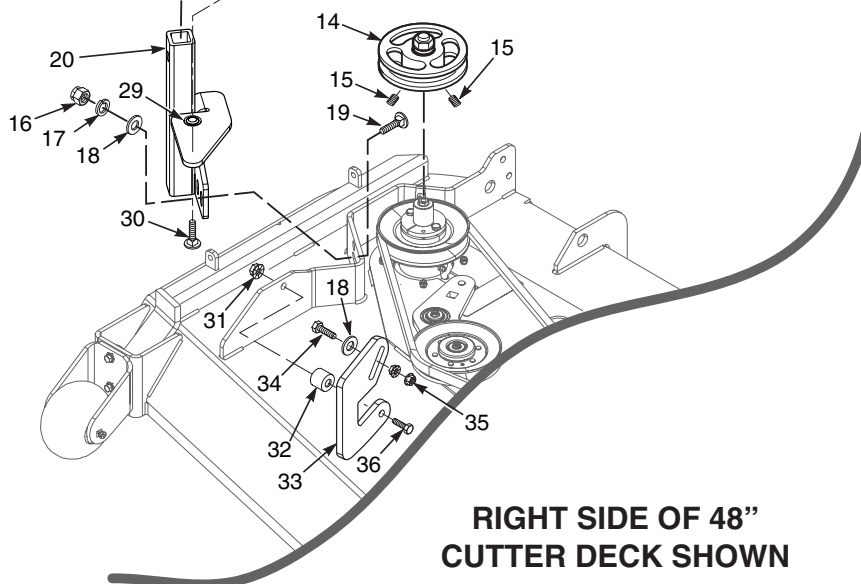
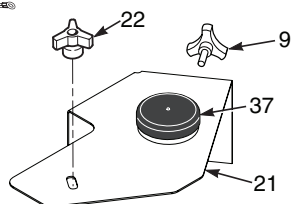
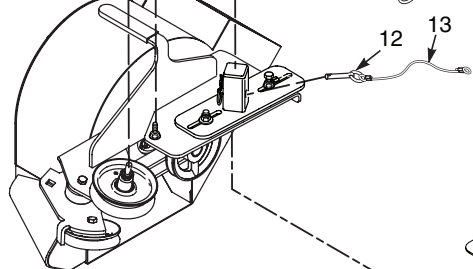
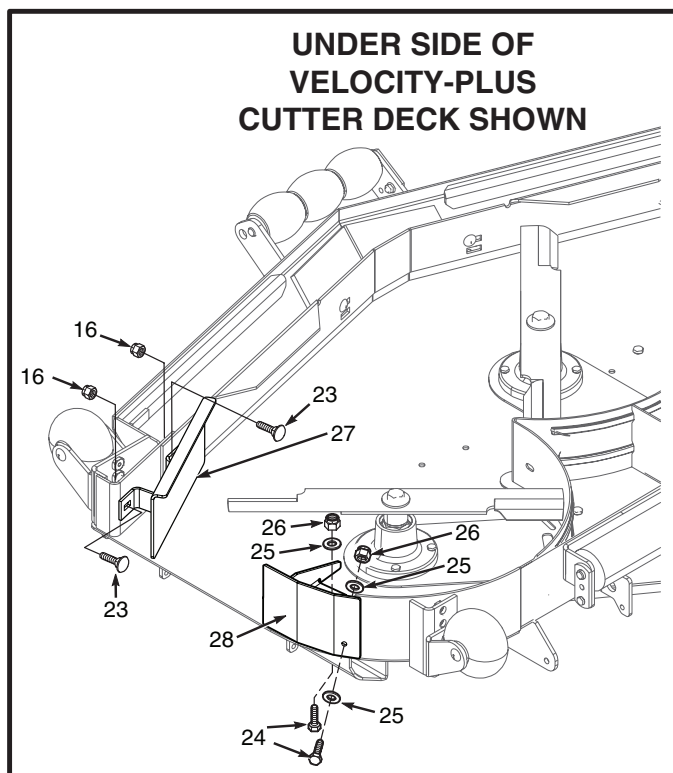
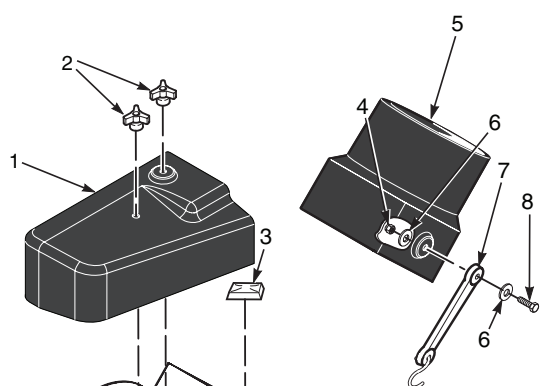
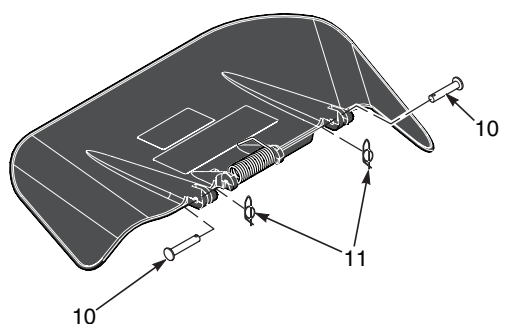


## STC 48"/52"

### BLOWER MOUNTING COMPONENTS

Ref. No.	Part No.	Description
1	484679	Belt Cover, 48"
	484685	Belt Cover, 52"
2	04029-04	Wingnut, Plastic 3/8" Small
3	483223	Cap, Square Vinyl
4	04021-08	Nut, Elastic Stop 1/4-20
5	461723	Adapter, Blower GC-STC, includes item #7
6	04040-14	Flatwasher, 1/4-.312 x .750 x .065
7	48137-04	Rubber Strap 7-3/4"
8	04001-59	Bolt, Hex Head 1/4-20 x 1-1/4"
9	481625-01	Knob W/Stud, 3/8-16 x 1-1/4"
10	04064-15	Clevis Pin, 5/16 x 1-1/2"
11	04069-03	Pin, Rue Cotter 5/16 Dia.
12	04067-07	Pin, Ring 1/2 x 2-1/4"
13	481547	Lanyard
14	482587	Pulley, 4.0" Dia. 1.125 Bore
15	04012-04	Setscrew, 5/16-18 x 3/8"
16	04021-09	Nut, Elastic Stop 3/8-16
17	04030-04	Lockwasher, 3/8"
18	04041-07	Flatwasher, 3/8-.391 x .938 x .105
19	04003-11	Bolt, Carr. 3/8-16 x 1-1/4" Grade 5
20	461894	Mounting Post Weldment, Blower
21	462549	Belt Cover Assembly, w/Cap - 48"
	462550	Belt Cover Assembly, w/Cap - 52"
22	04029-04	Wing Nut, 3/8 Plastic - Small
23	04003-23	Bolt, Carriage 3/8-16 x 1"
24	04001-09	Bolt, Hex Head 5/16-18 x 1"
25	04040-15	Flatwasher, 5/16-.375 x .875 x .083
26	04021-10	Nut, Elastic Stop 5/16-18
27	452383	Baffle Weldment 48 / 52
28	424683	Baffle, Turbo 48" Deck
	424211	Baffle, Turbo 52" Deck
29	04024-02	Nut, Push-On 3/8 Thread
30	04003-22	Bolt, Carriage 3/8-16 x 1-1/4"
31	484368	Cap, Spindle

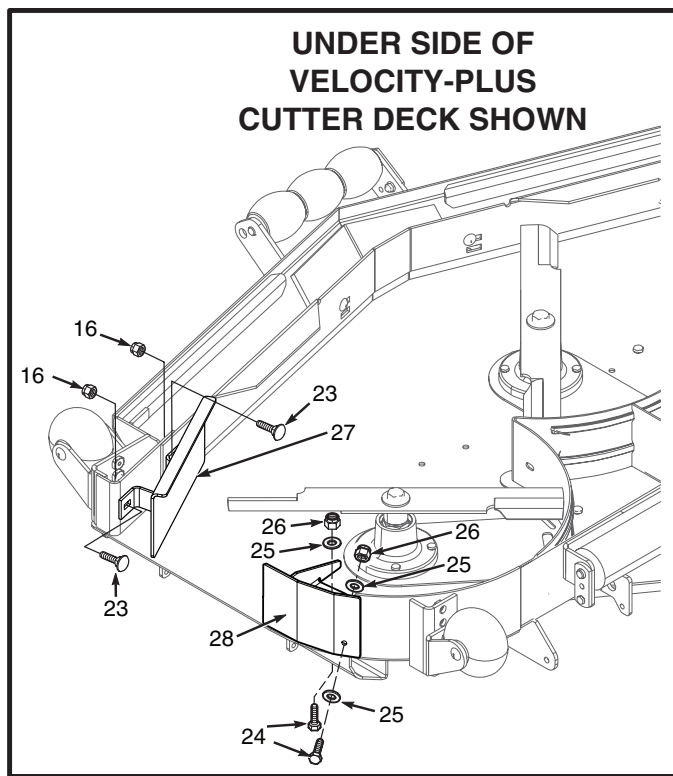
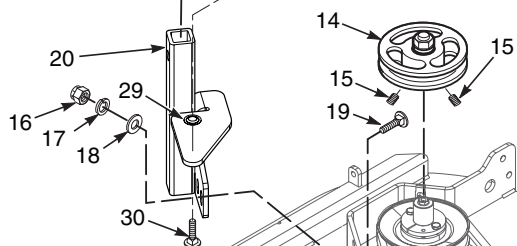
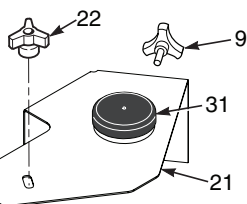
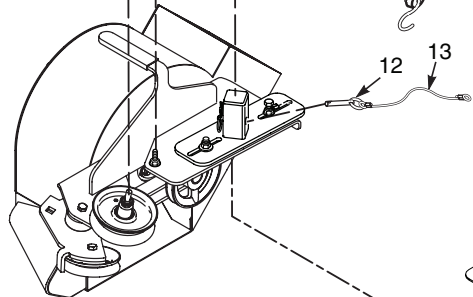
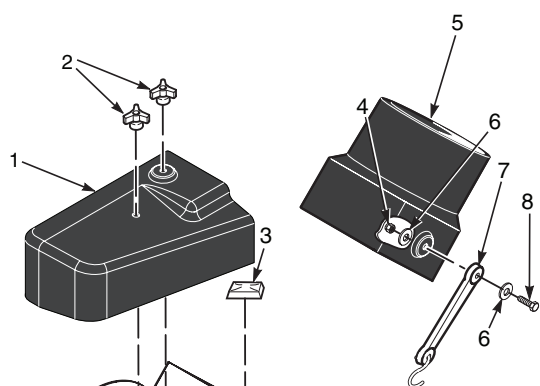
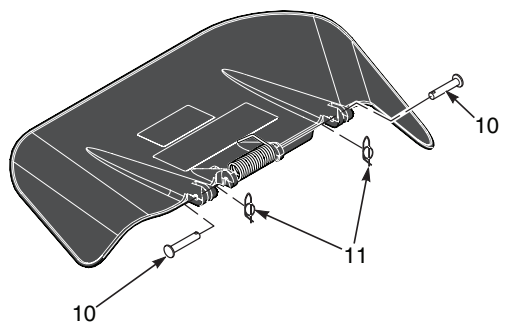
### STCII 48"/52" & SCZ 48"/52" BLOWER MOUNTING COMPONENTS



## STCII 48"/52" & SCZ 48"/52" BLOWER MOUNTING COMPONENTS

Ref. No.	Part No.	Description
1	484679	Belt Cover, 48"
	484685	Belt Cover, 52"
2	04029-04	Wingnut, Plastic 3/8" Small
3	483223	Cap, Square Vinyl
4	04021-08	Nut, Elastic Stop 1/4-20
5	461723	Adapter, Blower GC-STC, includes item #7
6	04040-14	Flatwasher, 1/4-.312 x .750 x .065
7	48137-04	Rubber Strap 7-3/4"
8	04001-59	Bolt, Hex Head 1/4-20 x 1-1/4"
9	481625-01	Knob W/Stud, 3/8-16 x 1-1/4"
10	04064-15	Clevis Pin, 5/16 x 1-1/2"
11	04069-03	Pin, Rue Cotter 5/16 Dia.
12	04067-07	Pin, Ring 1/2 x 2-1/4"
13	481547	Lanyard
14	482587	Pulley, 4.0" Dia. 1.125 Bore
15	04012-04	Setscrew, 5/16-18 x 3/8"
16	04021-09	Nut, Elastic Stop 3/8-16
17	04030-04	Lockwasher, 3/8"
18	04041-07	Flatwasher, 3/8-.391 x .938 x .105
19	04003-11	Bolt, Carr. 3/8-16 x 1-1/4" Grade 5
20	461894	Mounting Post Weldment, Blower
21	462549	Belt Cover Assembly, w/Cap - 48"
	462550	Belt Cover Assembly, w/Cap - 52"
22	04029-04	Wing Nut, 3/8 Plastic - Small
23	04003-23	Bolt, Carriage 3/8-16 x 1"
24	04001-09	Bolt, Hex Head 5/16-18 x 1"
25	04040-15	Flatwasher, 5/16-.375 x .875 x .083
26	04021-10	Nut, Elastic Stop 5/16-18
27	452383	Baffle Weldment 48 / 52
28	424683	Baffle, Turbo 48" Deck
	424211	Baffle, Turbo 52" Deck
29	04024-02	Nut, Push-On 3/8 Thread
30	04003-22	Bolt, Carriage 3/8-16 x 1-1/4"
31	04019-04	Nut, Serrated Flange 3/8-16
32	431029	Spacer (STCII48 & SCZ48)
33	452393	Bracket (STCII48 & SCZ48)
34	04001-136	Bolt, Hex Head 3/8-16 x 1-.40" Grade 8
35	04019-04	Nut, Serrated Flange 3/8-16
36	04001-21	Bolt, Hex Head 3/8-16 x 1-3/4"
37	484368	Cap, Spindle

### STC-61" & STCII-61" BLOWER MOUNTING COMPONENTS

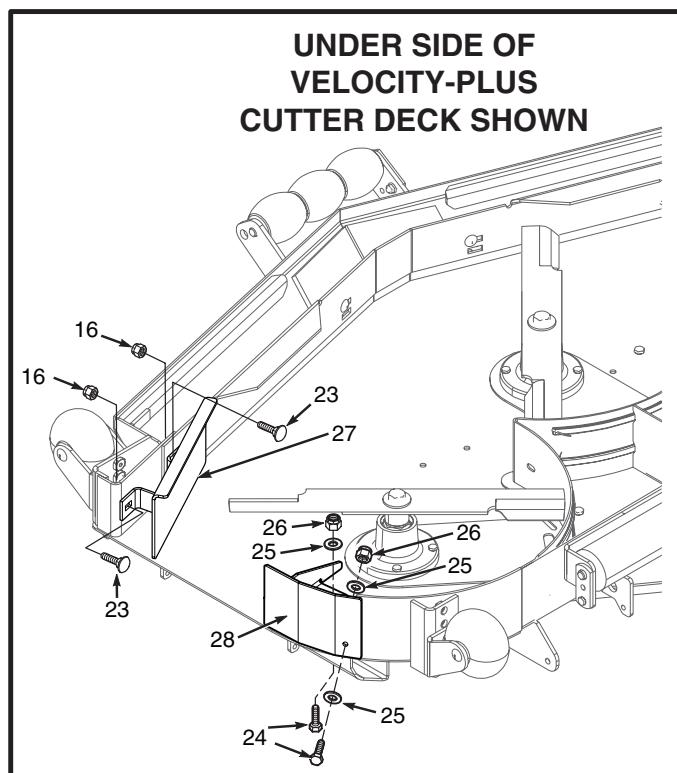
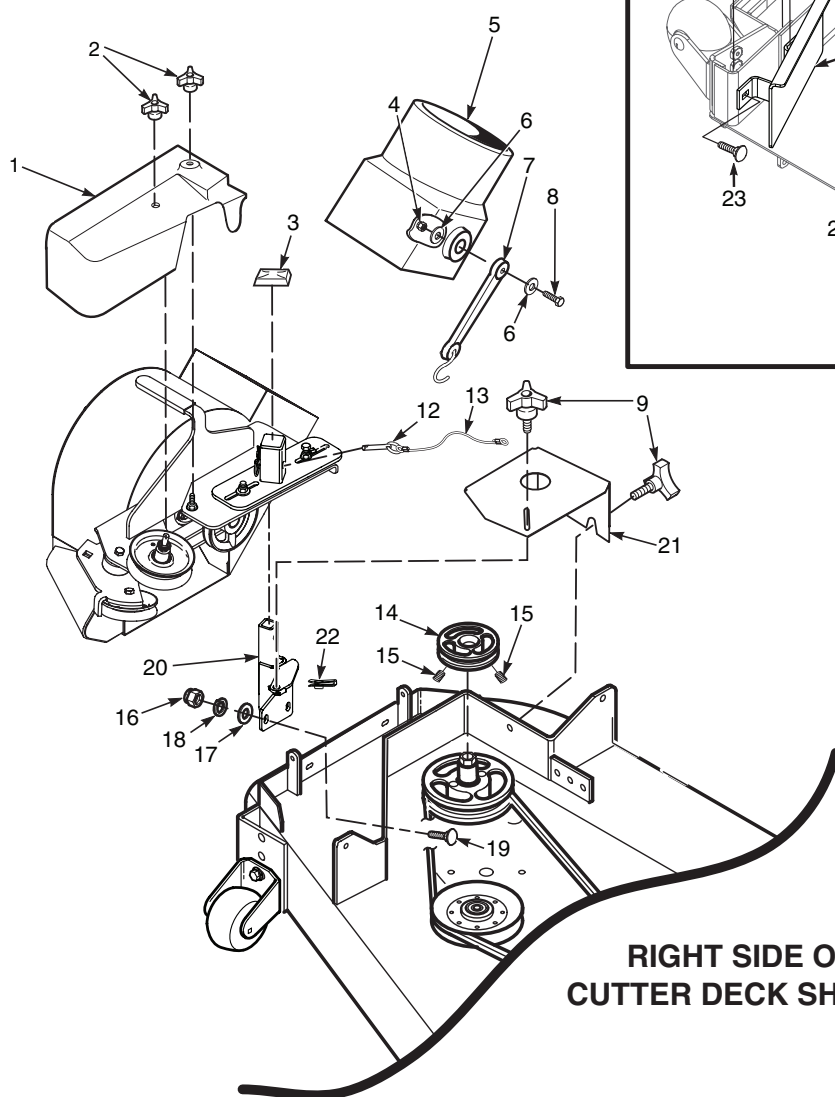
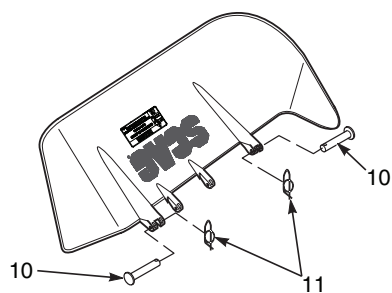


**RIGHT SIDE OF 48"  
CUTTER DECK SHOWN**

## STC-61" & STCII-61" BLOWER MOUNTING COMPONENTS

Ref. No.	Part No.	Description
1	483227	Belt Cover, 61"
2	04029-04	Wingnut, Plastic 3/8" Small
3	483223	Cap, Square Vinyl
4	04021-08	Nut, Elastic Stop 1/4-20
5	461723	Adapter, Blower GC-STC, includes item #7
6	04040-14	Flatwasher, 1/4-.312 x .750 x .065
7	48137-04	Rubber Strap 7-3/4"
8	04001-59	Bolt, Hex Head 1/4-20 x 1-1/4"
9	481625-01	Knob W/Stud, 3/8-16 x 1-1/4"
10	04064-15	Clevis Pin, 5/16 x 1-1/2"
11	04069-03	Pin, Rue Cotter 5/16 Dia.
12	04067-07	Pin, Ring 1/2 x 2-1/4"
13	481547	Lanyard
14	482587	Pulley, 4.0" Dia. 1.125 Bore
15	04012-04	Setscrew, 5/16-18 x 3/8"
16	04021-09	Nut, Elastic Stop 3/8-16
17	04030-04	Lockwasher, 3/8"
18	04041-07	Flatwasher, 3/8-.391 x .938 x .105
19	04003-11	Bolt, Carr. 3/8-16 x 1-1/4" Grade 5
20	461894	Mounting Post Weldment, Blower
21	462417	Belt Cover Assembly, w/Cap (STC-61V)
	462901	Belt Cover Assembly, w/Cap (STCII-61V)
22	04029-04	Wing Nut, 3/8 Plastic - Small
23	04003-23	Bolt, Carriage 3/8-16 x 1"
24	04001-09	Bolt, Hex Head 5/16-18 x 1"
25	04040-15	Flatwasher, 5/16-.375 x .875 x .083
26	04021-10	Nut, Elastic Stop 5/16-18
27	452384	Baffle Weldment - 61" Deck
28	424212	Baffle, Turbo - 61" Deck
29	04024-02	Nut, Push-On 3/8 Thread
30	04003-22	Bolt, Carriage 3/8-16 x 1-1/4"
31	484368	Cap, Spindle

**SCZ-61" / SCZII-61"  
STT 52"/61" & STTII 52"/61"  
BLOWER MOUNTING COMPONENTS**



**RIGHT SIDE OF  
CUTTER DECK SHOWN**

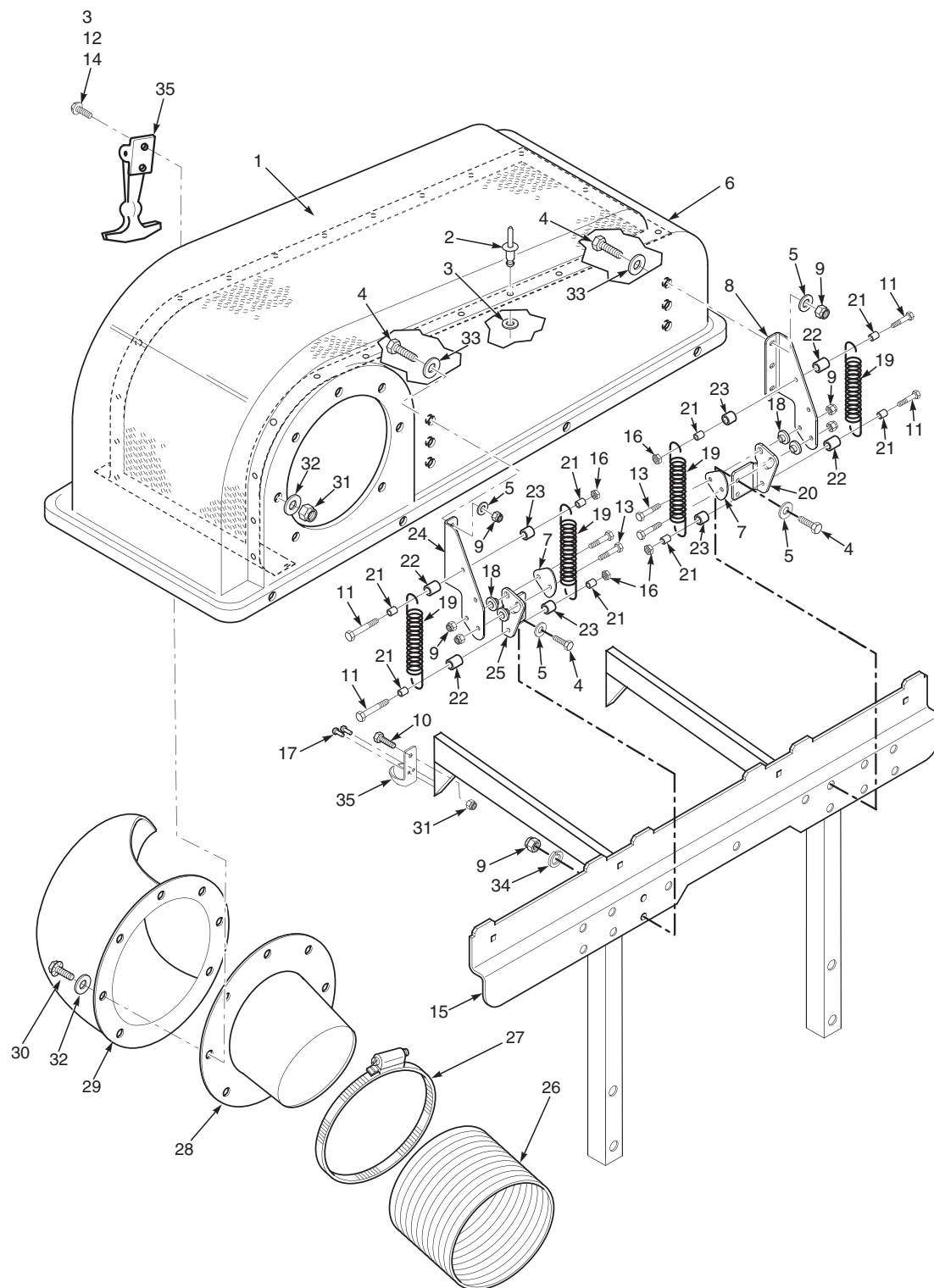
2013 GC-STC-V BMC

**SCZ-61" / SCZII-61"**  
**STT 52"/61" & STTII 52"/61"**  
**BLOWER MOUNTING COMPONENTS**

Ref. No.	Part No.	Description
1	483227	Belt Cover, (61")
	485715	Belt Cover, (STT-52 & STTII-52)
2	04029-04	Wingnut, Plastic 3/8" Small
3	483223	Cap, Square Vinyl
4	04021-08	Nut, Elastic Stop 1/4-20
5	461723	Adapter, Blower, includes item #7
6	04040-14	Flatwasher, 1/4-.312 x .750 x .065
7	48137-04	Rubber Strap 7-3/4"
8	04001-59	Bolt, Hex Head 1/4-20 x 1-1/4"
9	481625-01	Knob W/Stud, 3/8-16 x 1-1/4"
10	04064-15	Clevis Pin, 5/16 x 1-1/2"
11	04069-03	Pin, Rue Cotter 5/16 Dia.
12	04067-07	Pin, Ring 1/2 x 2-1/4"
13	481547	Lanyard
14	482377	Pulley, 5-1/2" Dia. - 1.125" Bore, (61")
	482587	Pulley, 4.0" Dia. - 1.125" Bore, (STT-52 & STTII-52)
15	04012-04	Setscrew, 5/16-18 x 3/8"
16	04021-09	Nut, Elastic Stop 3/8-16, (61")
	04117-04	Nut, Elastic Stop 1/2-13, (STT-52 & STTII-52)
17	04030-04	Lockwasher, 3/8", (61")
18	04041-07	Flatwasher, 3/8-.391 x .938 x .105, (61")
19	04003-11	Bolt, Carr. 3/8-16 x 1-1/4" Grade 5
	04001-71	Bolt, Hex Head 1/2-13 x 1-1/2", (STT-52 & STTII-52)
20	461894	Mounting Post Weldment, Blower, (61")
	463219	Mounting Post Weldment, Blower, (STT-52 & STTII-52)
21	462418	Belt Cover Assembly w/Cap, (61")
	484368	Cap, Spindle (not shown)
	428278	Belt Cover, (STT-52 & STTII-52)
22	04110-03	U-Nut
23	04003-23	Bolt, Carriage 3/8-16 x 1"
24	04001-09	Bolt, Hex Head 5/16-18 x 1"
25	04040-15	Flatwasher, 5/16-.375 x .875 x .083
26	04021-10	Nut, Elastic Stop 5/16-18
27	452384	Baffle Weldment, 61V Deck
	452383	Baffle Weldment, 52V Deck
28	424212	Baffle, Turbo 61" Deck
	424211	Baffle, Turbo 52" Deck
*	428249	Mounting Post Drill Template (STT & STTII-52V)

\* Not shown

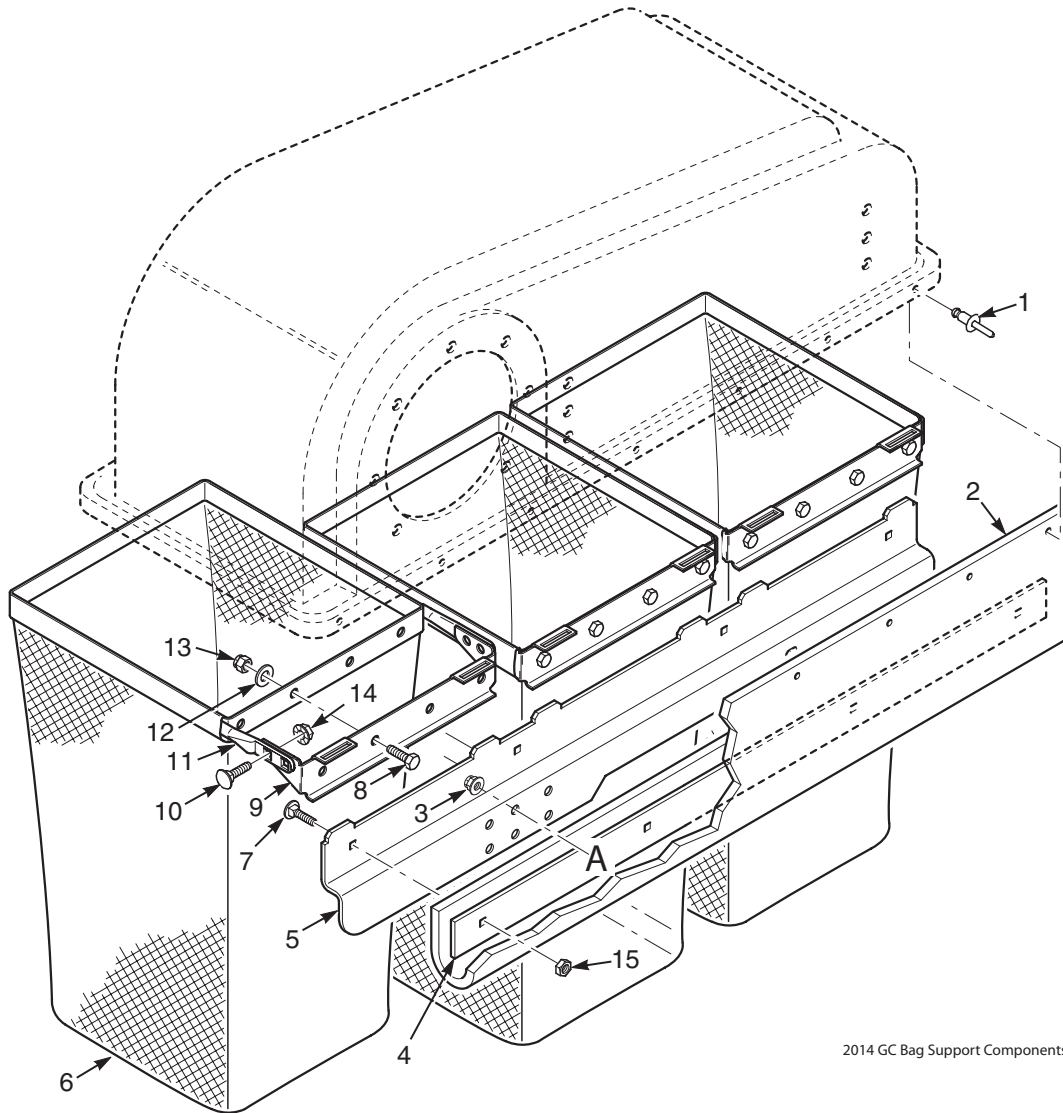
### GC-3B HOOD COMPONENTS



## GC-3B HOOD COMPONENTS

Ref. No.	Part No.	Description
1	423302	Screen, Catcher Hood
2	04090-02	Pop Rivet, 3/16 x .652
3	04041-19	Flatwasher, 3/16-.196 x .469 x .048
4	04001-32	Bolt, Hex Head 3/8-16 x 1-1/4"
5	04041-01	Flatwasher, 3/8-.391 x .938 x .105
6	461408	Hood Assembly, GC-3B (includes items 1, 2 & 3 and items 2 & 4 on page 34)
7	425832	Guard, GC Hinge
8	425830	Hinge, Upper LH
9	04021-09	Nut, Elastic Stop 3/8-16
10	04001-08	Bolt, Hex Head 5/16-18 x 3/4"
11	04001-30	Bolt, Hex Head 3/8-16 x 4"
12	04021-01	Nut, Elastic Stop #10-32
13	04001-20	Bolt, Hex Head 3/8-16 x 1-1/2"
14	04010-25	Screw, #10-32 x 3/4"
15	453120	Support Weldment, Bag Frame
16	04021-05	Locknut, 3/8-16 Center Lock
17	04090-03	Pop Rivet, 3/16 x .402
18	43546	Bushing, Hopper Pivot
19	482304	Spring, Hood Hinge
20	426041	Hinge, Lower LH
21	43212	Spacer, 1/2" O.D. x .370"
22	43886	Spacer, 1" O.D. x 1.25"
23	43277	Spacer, 1" O.D. x .850"
24	425831	Hinge, Upper RH
25	426042	Hinge, Lower RH
26	462536	Hose, 8" Dia. x 53"
27	48136-02	Clamp, 8-5/8" Max Dia.
28	482422	Tube, Filler
29	482421	Elbow
30	04001-10	Bolt, Hex Head 5/16-18 x 1-1/4"
31	04021-10	Nut, Elastic Stop 5/16-18
32	04040-15	Flatwasher, 5/16-.375 x .875 x .083
33	04041-11	Flatwasher, 3/8-.406 x 1-1/2" x .179
34	04030-04	Lockwasher, 3/8" Spring
35	482409	Latch

### GC-3B BAG SUPPORT COMPONENTS

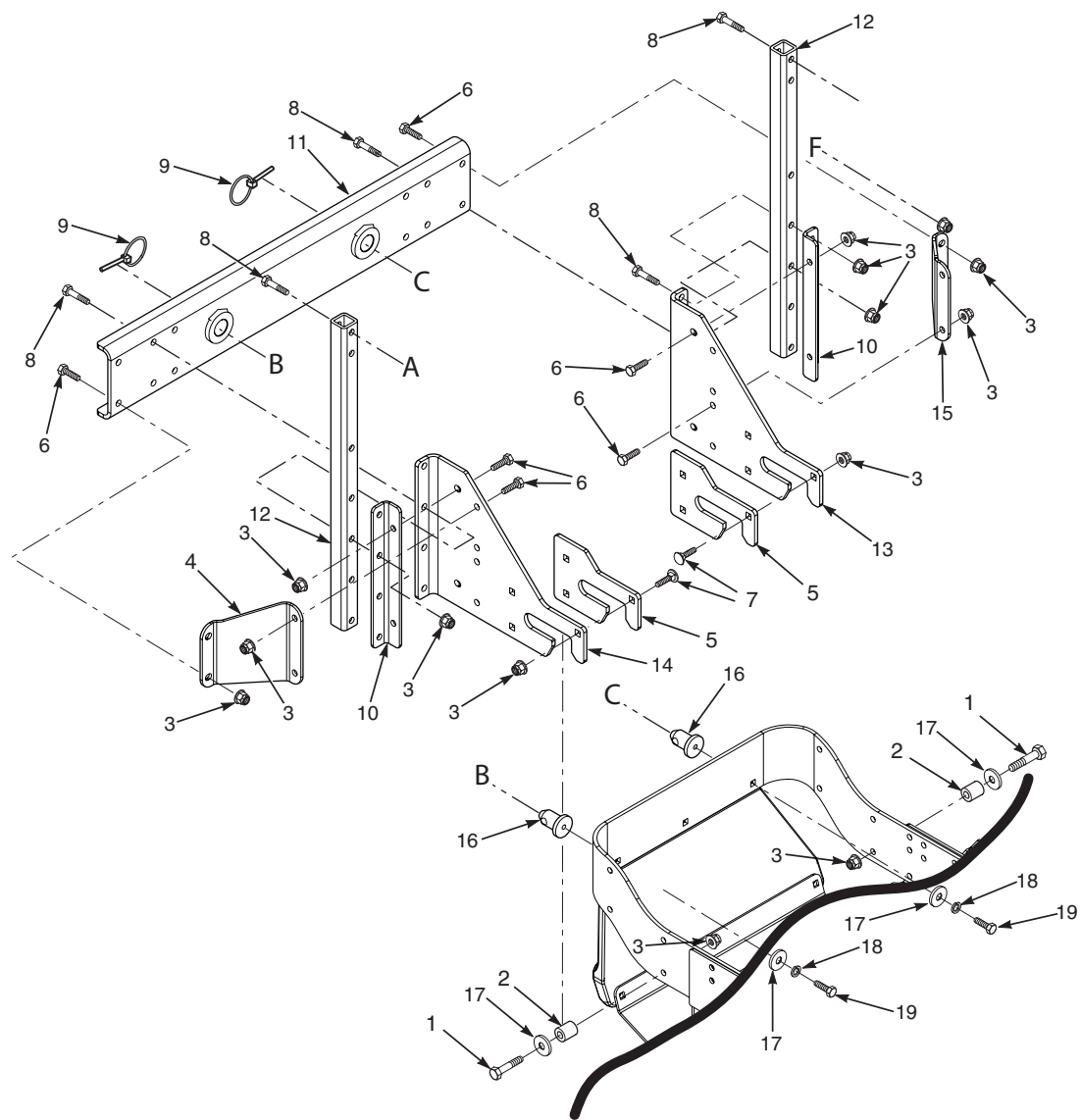


2014 GC Bag Support Components

**GC-3B BAG SUPPORT COMPONENTS**

Ref. No.	Part No.	Description
1	04090-02	Pop Rivet, 3/16 x .652
2	482321	Seal, Hood
3	04117-02	Nut, Elastic Flange 3/8-16
4	423312	Retainer, Seal
5	453120	Support, Bag Frame
6	462968	Bag Assembly
7	04003-02	Bolt, Carriage 1/4-20 x 3/4"
8	04001-08	Bolt, Hex Head 5/16-18 x 3/4"
9	423198	Mount, Bag Frame Tube
10	04003-12	Bolt, Carriage 5/16-18 x 3/4"
11	423197	Tube, Bag Support
12	04040-15	Flatwasher, 5/16-.375 x .875 x .083
13	04021-10	Nut, Elastic Stop 5/16-18
14	04019-03	Nut, Serrated Flange 5/16-18

### STC SUPPORT FRAME COMPONENTS

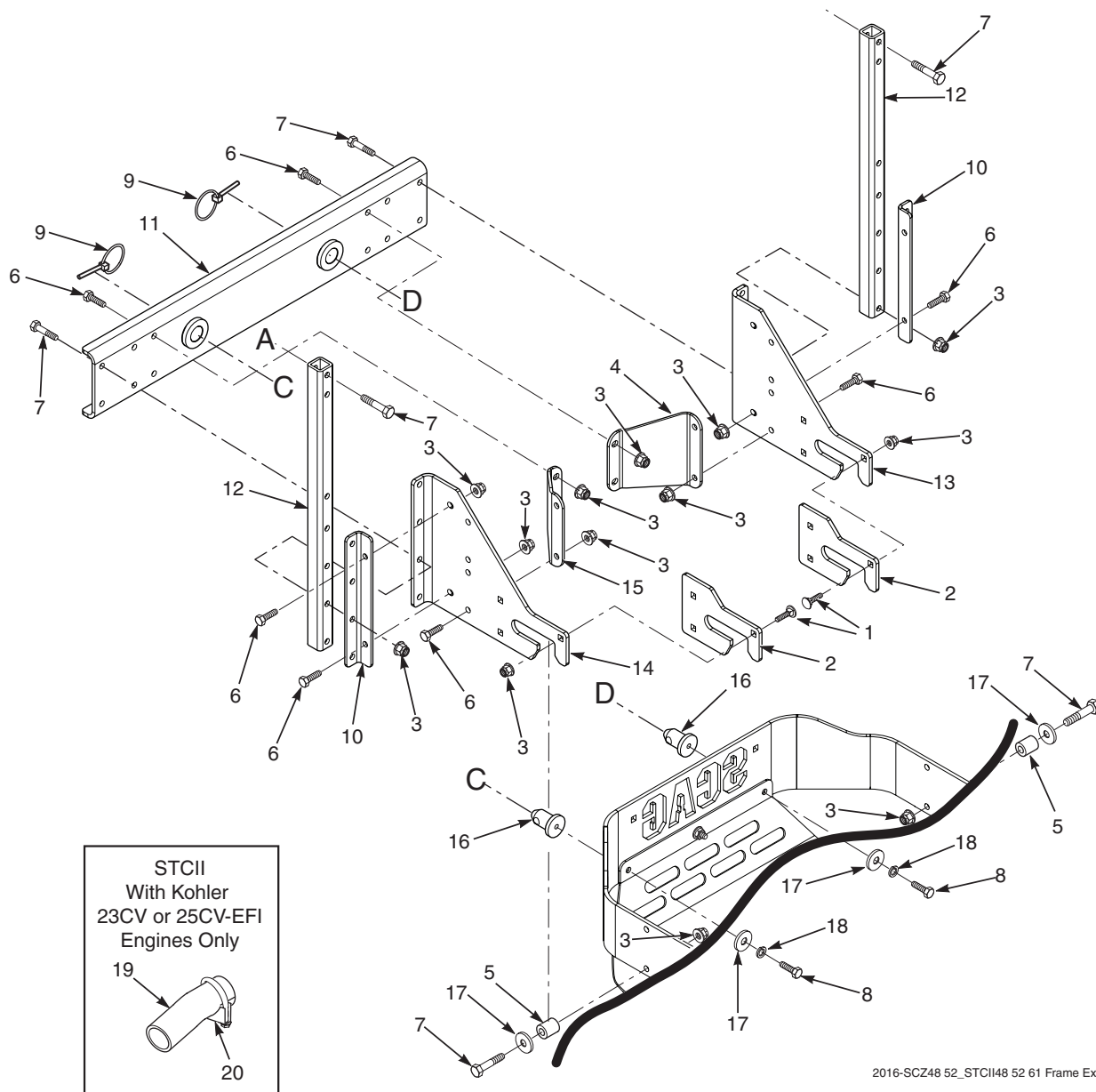


2016-STC Frame Exploded View

## STC SUPPORT FRAME COMPONENTS

Ref. No.	Part No.	Description
1	04001-46	Bolt, Hex Head 3/8-16 x 2-1/4"
2	43886	Spacer
3	04117-02	Nut, Elastic Flange 3/8-16
4	426016	Angle Bracket, GC
5	426024	Wear Plate, GC
6	04001-16	Bolt, Hex Head 3/8-16 x 1"
7	04003-22	Bolt, Carriage 3/8-16 x 1-1/4"
8	04001-46	Bolt, Hex Head 3/8-16 x 2-1/4"
9	04066-04	Quick Pin
10	426012	Mounting Bracket, Tube
11	452382	Mounting Bracket Weldment
12	426015	Tube, Upright
13	426011	Mounting Bracket, GC R.H.
14	426010	Mounting Bracket, GC L.H.
15	426017	Angle Bracket, GC
16	43884	Pin, GC Locator
17	04041-11	Flatwasher, 3/8-.406 x 1.50 x 7 Ga.
18	04030-04	Lockwasher, 3/8"
19	04001-168	Bolt, Hex Head 3/8-16 x 1-1/4"

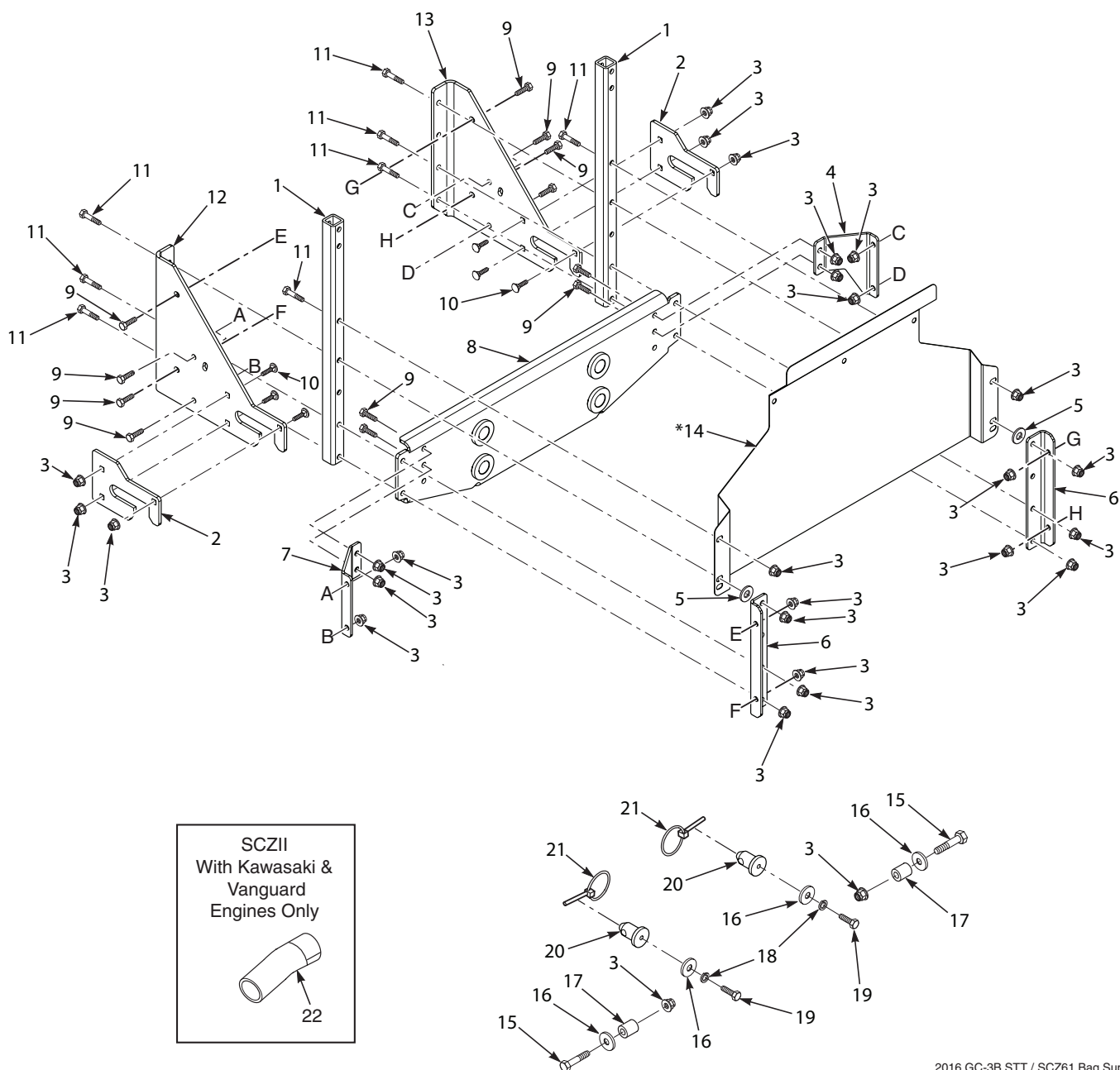
### SCZ 48"/52" STCII 48"/52"/61" BAG SUPPORT COMPONENTS (LOWER)



**SCZ 48"/52"**  
**STCII 48"/52"/61"**  
**BAG SUPPORT COMPONENTS (LOWER)**

Ref. No.	Part No.	Description
1	04003-22	Bolt, Carriage 3/8-16 x 1-1/4"
2	426024	Wear Plate, GC
3	04117-02	Nut, Elastic Flange 3/8-16
4	426016	Angle Bracket, GC
5	43886	Spacer
6	04001-16	Bolt, Hex Head 3/8-16 x 1"
7	04001-46	Bolt, Hex Head 3/8-16 x 2-1/4"
8	04001-168	Bolt, Hex Head 3/8-16 x 1-1/4"
9	04066-04	Quick Pin
10	426012	Mounting Bracket, Tube
11	452382	Mounting Bracket Weldment
12	426015	Tube, Upright
13	426011	Mounting Bracket, GC R.H.
14	426010	Mounting Bracket, GC L.H.
15	426017	Angle Bracket, GC
16	43884	Pin, GC Locator
17	04041-11	Flatwasher, 3/8-.406 x 1.50 x 7 Ga.
18	04030-04	Lockwasher, 3/8"
19	485784	Tube, Exhaust (STCII With Kohler 23CV or 25CV-EFI Engines Only)
20	48633	Clamp, Muffler - 1-1/2" (STCII With Kohler 23CV or 25CV-EFI Engines Only)

### SCZ-61" / SCZII-61" STT 52"/61" & STTII 52"/61" BAG SUPPORT COMPONENTS (LOWER)



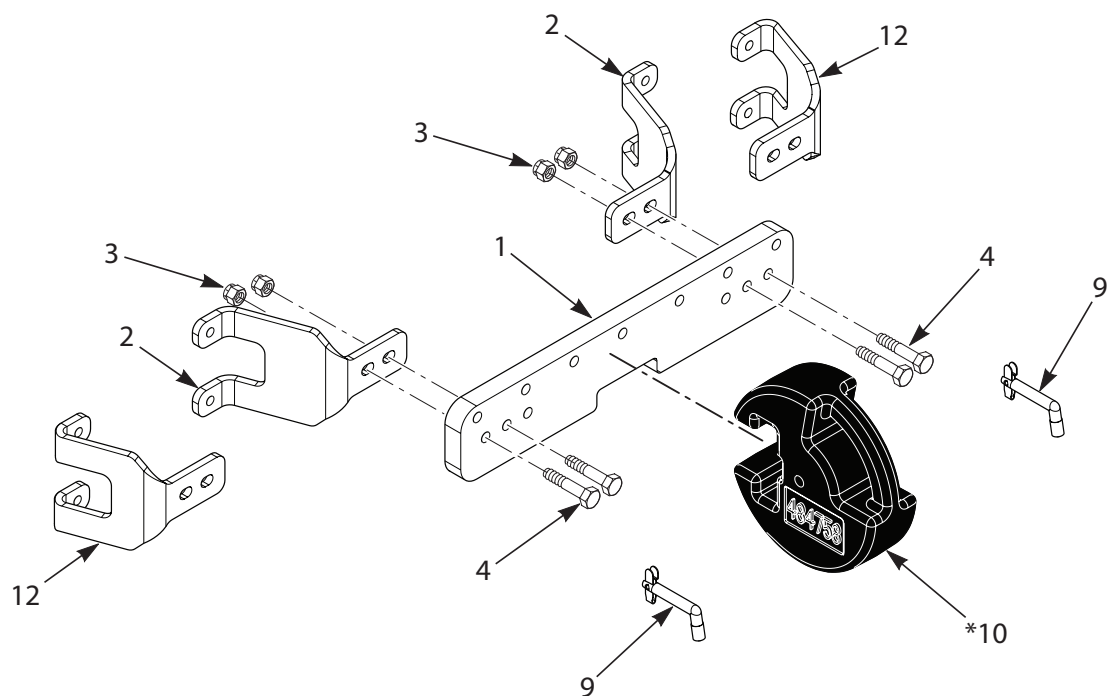
2016 GC-3B STT / SCZ61 Bag Support

**SCZ-61" / SCZII-61"**  
**STT 52"/61" & STTII 52"/61"**  
**BAG SUPPORT COMPONENTS (LOWER)**

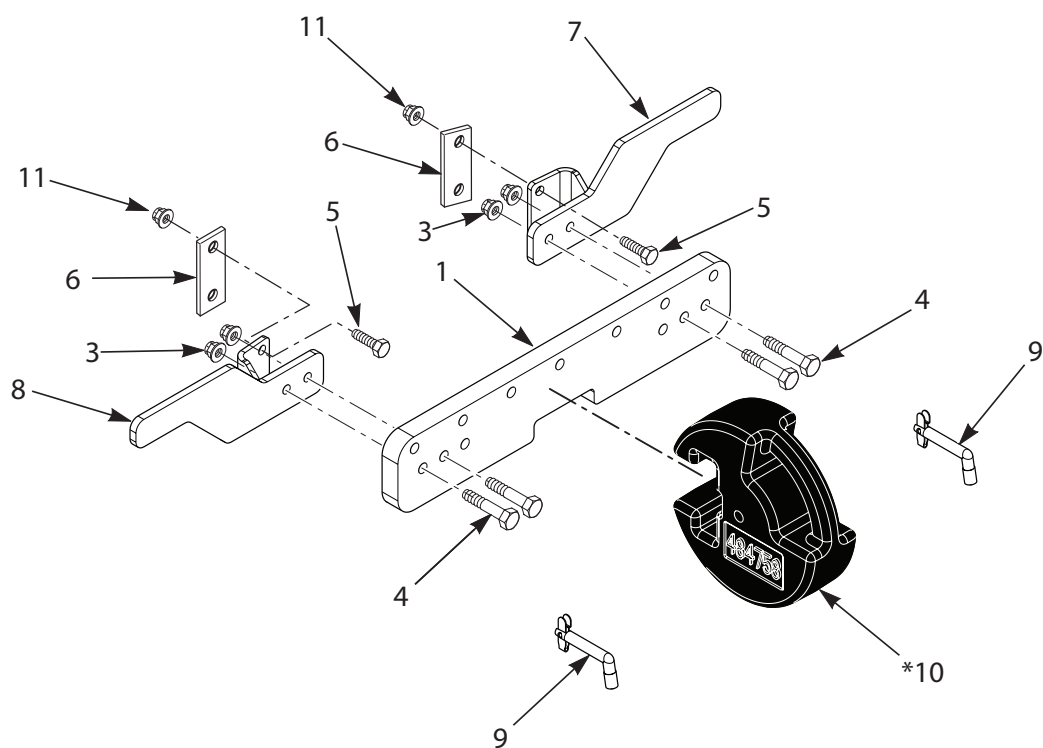
Ref. No.	Part No.	Description
1	426385	Tube, Upright
2	426024	Wear Plate, GC
3	04117-02	Nut, Elastic Flange 3/8-16
4	426089	Angle Brace, LH GC
5	04041-28	Flatwasher, .469 X 1.75 X .25
6	426088	Mounting Bracket, GC Tube
7	426090	Angle Brace, RH GC
8	452416	Mounting Bracket Weldment
9	04001-16	Bolt, Hex Head 3/8-16 x 1"
10	04003-23	Bolt, Carriage 3/8-16 x 1"
11	04001-31	Bolt, Hex Head 3/8-16 x 2-1/2"
12	426087	RH Mounting Bracket, GC
13	426086	LH Mounting Bracket, GC
14	*423435	Heatshield (used on STT & STTII Models Only)
15	04001-46	Bolt, Hex Head 3/8-16 x 2-1/4"
16	04041-11	Flatwasher, 3/8-.406 x 1.50 x 7 Ga.
17	43886	Spacer
18	04030-04	Lockwasher, 3/8"
19	04001-168	Bolt, Hex Head 3/8-16 x 1-1/4"
20	43884	Pin, GC Locator
21	04066-04	Quick Pin
22	486660	Exhaust Extension FX (SCZII with Kawasaki Engine Only)
	486659	Exhaust Extension 37BV (SCZII with 37 Vanguard Engine Only)

### FRONT WEIGHT COMPONENTS

STC / STCII / SCZ / SCZII / STTII / STT-Diesel Models



STT Models



## FRONT WEIGHT COMPONENTS

Ref. No.	Part No.	Description
1	426093	Weight Bar
2	426091	Bracket, LH Weight Bar (STC / STCII & SCZ48/52)
	426092	Bracket, RH Weight Bar (STC / STCII & SCZ48/52)
3	04117-04	Nut, Elastic Flange 1/2-13
4	04001-34	Bolt, Hex Head 1/2-13
5	04001-20	Bolt, Hex Head 3/8-16 x 1-1/2"
6	422586	Clamp, Bar
7	452417	Mounting Bracket Weldment, LH Weight Bar
8	452418	Mounting Bracket Weldment, RH Weight Bar
9	485172	Pin, Weight Retention
10	*484758	Weight (see below)
11	04117-02	Nut, Elastic Flange 3-8/16
12	427351	Bracket, Weight Bar (LH & RH for STT-Diesel, STTII52/61 & SCZ/SCZII 61)

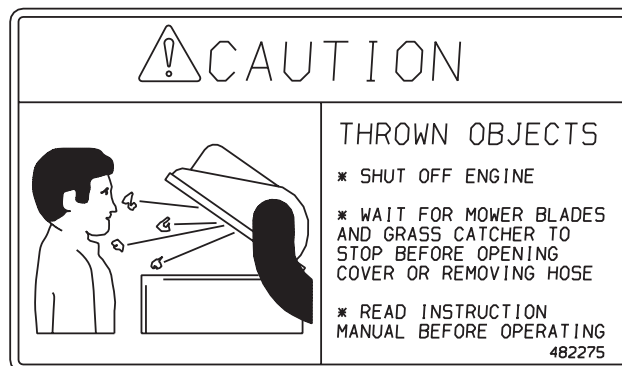
**\*Weights Required**

<b>Model</b>	<b>Qty.</b>
STC 48/52	5
STC 61	5
STCII 48/52	6
STCII 61	5
SCZ 48/52	6
SCZ/SCZII 61	5
STT 52	4
STT 61	5
STTII 52	4 (5 for the 52V-26CH-EFI-LP)
STTII 61	5

### GC DECALS



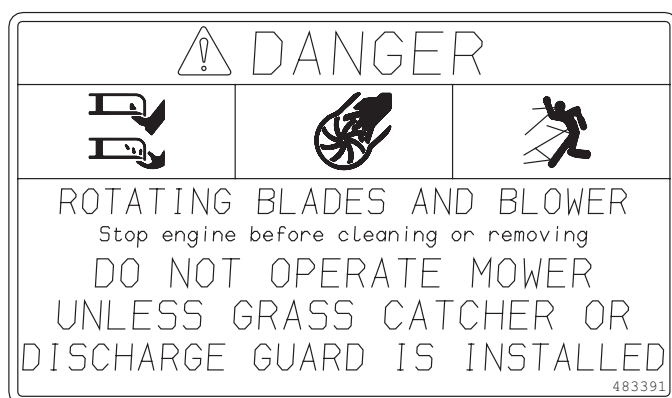
483402



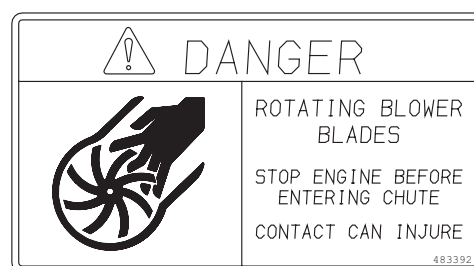
482275



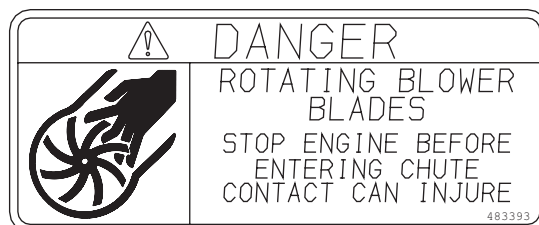
481327



483391



483392



483393

# LIMITED WARRANTY- COMMERCIAL ACCESSORY

---

Any part of the Scag commercial accessory manufactured by Scag and found, in the reasonable judgment of Scag, to be defective in material or workmanship, will be repaired or replaced by an Authorized Scag Service Dealer without charge for parts and labor.

The Scag accessory, including any defective part, must be returned to an Authorized Scag Service Dealer within the warranty period. The expense of delivering the accessory to the dealer for warranty work and the expense of returning it back to the owner after repair or replacement will be paid for by the owner. Scag's responsibility in respect to claims is limited to making the required repairs or replacements, and no claim of breach of warranty shall be cause for cancellation or rescission of the contract of sale of any Scag machine. Proof of purchase will be required by the dealer to substantiate any warranty claim. All warranty work must be performed by an Authorized Scag Service Dealer.

This warranty is limited to 90 days from the date of original retail purchase for any Scag accessory that is used for commercial purposes, or any other income-producing purpose including rental use.

The warranty for the grass catcher blower assemblies (excluding the belt) is limited to 1-year from the date of original retail purchase. 90 Days for rental use.

This warranty does not cover any accessory that has been subject to misuse, neglect, negligence, or accident, or that has been operated in any way contrary to the operating instructions as specified in the Operator's Manual. The warranty does not apply to any damage to the accessory that is the result of improper maintenance, or to any accessory or parts that have not been assembled or installed as specified in the Operator's Manual.

The warranty does not cover any accessory that has been altered or modified. In addition, the warranty does not extend to repairs made necessary by normal wear, or by the use of parts or accessories which, in the reasonable judgment of Scag, are either incompatible with the Scag mower or adversely affect its operation, performance or durability. This warranty does not cover engines and electric starters, which are warranted separately by their manufacturer.

Scag Power Equipment reserves the right to change or improve the design of any accessory without assuming any obligation to modify any accessory previously manufactured.

All other implied warranties are limited in duration to the 90 day warranty period. Accordingly, any such implied warranties including merchantability, fitness for a particular purpose, or otherwise, are disclaimed in their entirety after the expiration of the appropriate ninety day warranty period. Scag's obligation under this warranty is strictly and exclusively limited to the repair or replacement of defective parts and Scag does not assume or authorize anyone to assume for them any other obligation. Some states do not allow limitations on how long an implied warranty lasts, so the above limitation may not apply to you.

Scag assumes no responsibility for incidental, consequential or other damages including, but not limited to, expense for gasoline, oil, expense of delivering the machine to an Authorized Scag Service Dealer and expense of returning it back to the owner, mechanic's travel time, telephone or telegram charges, rental of a like product during the time warranty repairs are being performed, travel, loss or damage to personal property, loss of revenue, loss of use of the mower, loss of time, or inconvenience. Some states do not allow the exclusion or limitation of incidental or consequential damages, so the above limitation or exclusion may not apply to you.

This warranty gives you specific legal rights, and you may also have other rights which vary from state to state.