



# ***OPERATOR'S MANUAL***



## **Model RS-S Ride-On Attachment**

Congratulations on your new RS-S Ride-On Attachment! This manual contains the operating instructions and safety information for your Scag RS-S Ride-On Attachment. Reading this manual can provide you with assistance in maintenance and adjustment procedures to keep your accessory performing to maximum efficiency. The specific models that this book covers are listed on the inside cover. Before operating your machine, please read all the information enclosed.



# WARNING

## **FAILURE TO FOLLOW SAFE OPERATING PRACTICES MAY RESULT IN SERIOUS INJURY OR DEATH.**

- Read this manual completely as well as other manuals that came with your mower.
- DO NOT operate on steep slopes.
- Under no circumstances should the machine be operated on slopes greater than 20 degrees. ALWAYS FOLLOW OSHA APPROVED OPERATION.
- DO NOT mow on wet grass. Wet grass reduces traction and steering control.
- Keep all shields in place, especially the grass discharge chute.
- Before performing any maintenance or service, stop the machine and remove the spark plug wire and ignition key.
- If a mechanism becomes clogged, stop the engine before cleaning.
- Keep hands, feet and clothing away from power-driven parts.
- Keep others off the mower and ride-on attachment (only one person at a time)

## **REMEMBER - YOUR MOWER IS ONLY AS SAFE AS THE OPERATOR!**

**HAZARD CONTROL AND ACCIDENT PREVENTION ARE DEPENDENT UPON THE AWARENESS, CONCERN, PRUDENCE, AND PROPER TRAINING OF THE PERSONNEL INVOLVED IN THE OPERATION, TRANSPORT, MAINTENANCE, AND STORAGE OF THE EQUIPMENT.**

**This manual covers the operating instructions and illustrated parts list for:**

**RS-S**

**with a serial number of**

**E3500001 to E3599999**

**Always use the entire serial number listed on the serial number tag when referring to this product.**

## TABLE OF CONTENTS

1.1 INTRODUCTION.....	3
1.2 DIRECTION REFERENCE .....	3
2.1 INTRODUCTION.....	3
2.2 SIGNAL WORDS .....	3
2.3 BEFORE OPERATION CONSIDERATIONS.....	4
3.1 ASSEMBLY INSTRUCTIONS.....	5
4.1 OPERATION INSTRUCTIONS .....	6
4.2 TRANSPORTING.....	7
5.1 REMOVAL INSTRUCTIONS.....	8
RS-S ASSEMBLY .....	10
RS-S DECALS.....	12
LIMITED WARRANTY- COMMERCIAL ACCESSORY .....	13



## 1.1 INTRODUCTION

This manual has been prepared to provide the information you need to correctly assemble, operate, and maintain this ride on attachment. Read it carefully and keep it for future reference.

**THE REPLACEMENT OF ANY PART ON THIS PRODUCT BY OTHER THAN THE MANUFACTURER'S AUTHORIZED REPLACEMENT PART MAY ADVERSELY AFFECT THE PERFORMANCE, DURABILITY OR SAFETY OF THIS PRODUCT.**

**USE OF OTHER THAN ORIGINAL SCAG REPLACEMENT PARTS WILL VOID THE WARRANTY.**

If additional information or service is needed that is not outlined in this manual, please contact your Scag Power Equipment dealer. Scag dealers are trained in the latest service methods and carry a full line of Scag replacement parts.

When ordering parts, always provide the complete model number and serial number of your ride on attachment.

All information provided in this manual is based upon information available at the time of printing. Scag Power Equipment reserves the right to make changes at any time without notice or obligation.

## 1.2 DIRECTION REFERENCE

The "Right" and "Left", "Front" and "Rear" of the machine are referenced from the normal operating position.

# SAFETY INFORMATION

## 2.1 INTRODUCTION

Your mower is only as safe as the operator. Carelessness or operator error may result in serious bodily injury or death. Hazard control and accident prevention are dependent upon the awareness, concern, prudence, and proper training of the personnel involved in the operation, transport, maintenance and storage of the equipment. Make sure every operator is properly trained and thoroughly familiar with all of the controls before operating the mower with the ride on attachment installed. The owner/user can prevent and is responsible for accidents or injuries occurring to themselves, other people or property.

**READ THIS OPERATOR'S MANUAL AND THE OPERATOR'S MANUAL THAT CAME WITH YOUR MOWER BEFORE ATTEMPTING TO OPERATE YOUR MOWER WITH THE RIDE-ON ATTACHMENT INSTALLED.**

A replacement manual is available from your authorized Scag Service Dealer or by contacting Scag Power Equipment, Service Department at P.O. Box 152, Mayville, WI 53050 or contact us via the Internet at [www.scag.com](http://www.scag.com). The manual for this machine can be downloaded by using the model and serial number or use the contact form to make your request. Please indicate the complete model and serial number of your Scag product when requesting replacement manuals.

## 2.2 SIGNAL WORDS



This symbol means **"Attention! Become Alert! Your Safety is Involved!"** The symbol is used with the following signal words to attract your attention to safety messages found on the decals on the machine and throughout this manual. The message that follows the symbol contains important information about safety. To avoid injury and possible death, carefully read the message! Be sure to fully understand the causes of possible injury or death. Signal Word:

It is a distinctive word found on the safety decals on the machine and throughout this manual that alerts the viewer to the existence and relative degree of the hazard.



**DANGER**

The signal word "DANGER" denotes that an extremely hazardous situation exists on or near the machine that could result in high probability of death or irreparable injury if proper precautions are not taken.

## **WARNING**

The signal word “WARNING” denotes that a hazard exists on or near the machine that can result in injury or death if proper precautions are not taken.

## **CAUTION**

The signal word “CAUTION” is a reminder of safety practices on or near the machine that could result in personal injury if proper precautions are not taken. Your safety and the safety of others depends significantly upon your knowledge and understanding of all correct operating practices and procedures of the machine and the ride on attachment.

### 2.3 BEFORE OPERATION CONSIDERATIONS

1. NEVER allow children to operate this mower. Do not allow adults to operate this machine without proper instructions.
2. DO NOT allow children to ride or play on the machine or ride-on attachment, it is not a toy.
3. DO NOT carry passengers. Only allow the machine operator on the ride-on attachment.
4. DO NOT operate the machine under the influence of alcohol or drugs.
5. DO NOT wear loose fitting clothing. Loose clothing, jewelry or long hair could get tangled in moving parts.
6. DO NOT operate the machine wearing shorts; always wear adequate protective clothing including long pants. Wearing safety glasses, safety shoes and a helmet is advisable and is required by some local ordinances and insurance regulations.
7. Keep the machine and attachments in good operating condition. Keep all shields and safety devices in place. If a shield, safety device or decal is defective or damaged, repair or replace it before operating the machine.
8. Clear the area to be mowed of foreign objects that may cause damage to the equipment or could be picked up and thrown by the cutter blades.

9. Familiarize yourself with the following safety and instruction decals regarding ride-on attachments before operating.

10. Maximum operator weight not to exceed 230 lbs.



## 3.1 ASSEMBLY INSTRUCTIONS

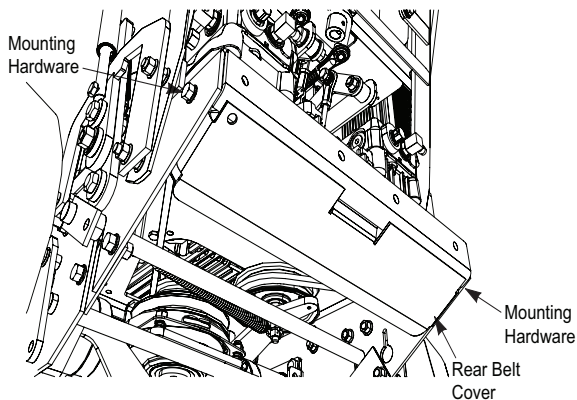
### -NOTE-

*Use the illustrated parts list as a part number reference when following the assembly instructions.*

1. Remove all packaging materials. Lay out the mounting hardware and the ride-on attachment parts for easy access. Prepare the work area making sure that it is a clean, safe environment.
2. Remove the rear belt cover from the rear of the machine for easy access to the mounting holes for this ride-on attachment. See Figure 3-1.

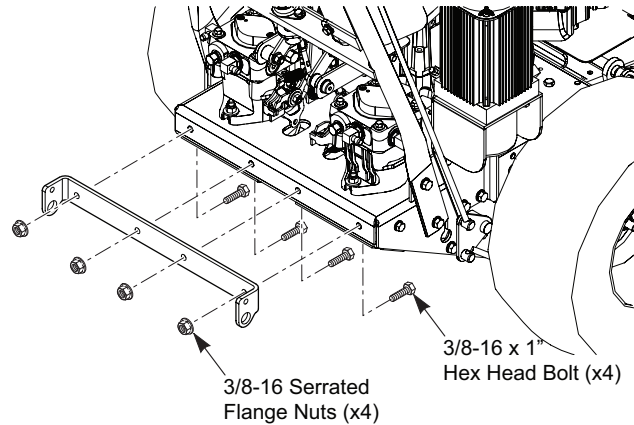
### -NOTE-

*Do not discard the belt cover or mounting hardware. The rear belt cover MUST be reinstalled after the ride-on attachment has been completely installed on the machine.*

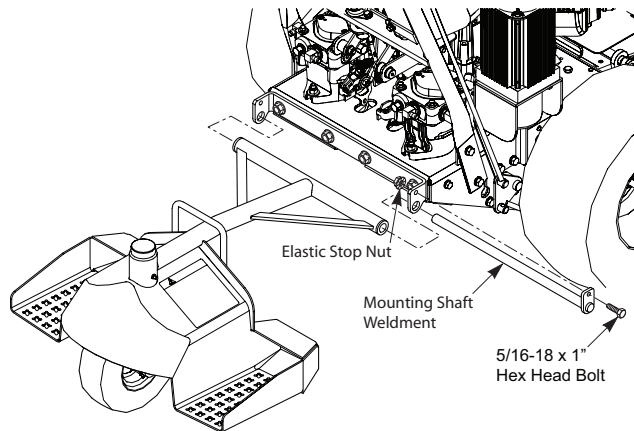


**FIGURE 3-1**

3. Install the ride-on attachment mounting bracket to the rear of the machine. Secure using four (4) 3/8-16 x 1" hex head bolts and four (4) 3/8-16 serrated flange nuts as shown in Figure 3-2.
4. Install the ride-on attachment and secure to the mounting bracket using the mounting shaft weldment.
5. Secure the mounting shaft weldment to the mounting bracket using one (1) 5/16-18 x 1" hex head bolt and one (1) 5/16-18 elastic stop nut. See Figure 3-3.
6. Reinstall and secure the rear belt cover removed in step 2.

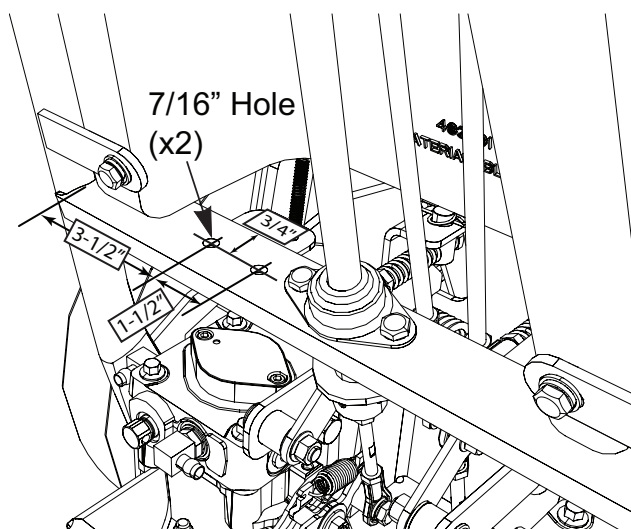


**FIGURE 3-2**



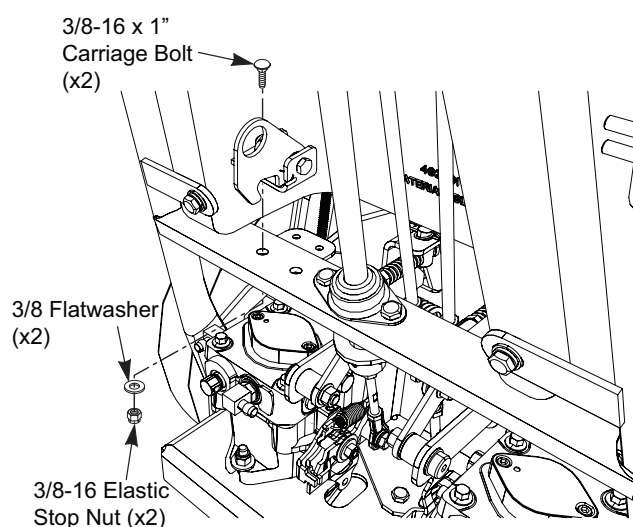
**FIGURE 3-3**

7. Mount the latch assembly to the lower bearing mount cross member on the handle bar. If the holes are pre-drilled in the lower bearing mount cross member, proceed to step 9.
8. Measure the hole locations on the lower bearing mount cross member as shown in Figure 3-4. Measure the first hole from the inside of the handle bar tube towards the center of the handle bar. See Figure 3-4.



**FIGURE 3-4**

9. Center punch and drill the holes on the lower bearing mount cross member using a 7/16" drill bit.
10. Secure the latch to the lower bearing cross member using two (2) 3/8-16 x 1" carriage bolts, two (2) 3/8" flatwashers and two (2) 3/8-16 elastic stop nuts. See Figure 3-5. The mounting hardware is pre-installed on the latch assembly.
11. Tighten the latch mounting hardware.



**FIGURE 3-5**

## 4.1 OPERATION INSTRUCTIONS

**READ THE OPERATOR'S MANUAL FOR YOUR MOWER AND FAMILIARIZE YOURSELF WITH ALL OF THE CONTROLS BEFORE OPERATING THE MACHINE. MAKE SURE YOU UNDERSTAND ALL OF THE CONTROLS, THEIR LOCATION AND FUNCTIONS BEFORE OPERATING. PRACTICE OPERATING THE MACHINE WITHOUT THE RIDE-ON ATTACHMENT UNTIL YOU ARE FAMILIAR WITH ALL OF THE CONTROLS.**

1. Practice operating the machine with the ride-on attachment installed in a large, open area with level terrain and no obstacles present. The ride-on attachment will affect the machine operation on slopes, when making a turn and when starting or stopping.
2. Use care when turning to insure that you do not swing the ride-on attachment or yourself into obstacles.
3. When turning, lean forward and toward the direction of the turn to keep yourself stabilized.
4. Reduce speed and exercise extreme caution when operating on slopes to prevent tipping or loss of traction or control. The operator is responsible for safe operation on slopes.
5. To prevent tipping or loss of control, start and stop smoothly, avoid unnecessary turns and travel at a reduced speed.
6. Avoid sudden starting or stopping on a slope. If the tires lose traction, disengage the blades and proceed slowly off the slope.

<b>! WARNING</b>	
<p><b>TO AVOID SERIOUS BODILY INJURY:</b></p> <ul style="list-style-type: none"> <li>* Do not operate on slopes greater than 20 degrees</li> <li>* Always keep both hands on turning controls</li> <li>* Maximum operator weight not to exceed 230 lbs</li> </ul> <p><b>BEFORE LEAVING THE RIDE-ON ATTACHMENT:</b></p> <ul style="list-style-type: none"> <li>* Disengage blade clutch</li> <li>* Position speed control in neutral</li> <li>* Apply Parking Brake</li> <li>* Wait for all movement to stop</li> </ul> <p style="text-align: center;"><b>READ OPERATOR' MANUAL</b></p>	

483777



7. Be aware that loss of traction may occur when traveling down hill. The machine weight will transfer forward to the front wheels and may cause the drive wheels to slip and cause lack of braking and steering control.

## **WARNING**

**DO NOT operate on steep slopes. Under no circumstances should the machine be operated on slopes greater than 20 degrees. ALWAYS FOLLOW OSHA APPROVED OPERATION.**

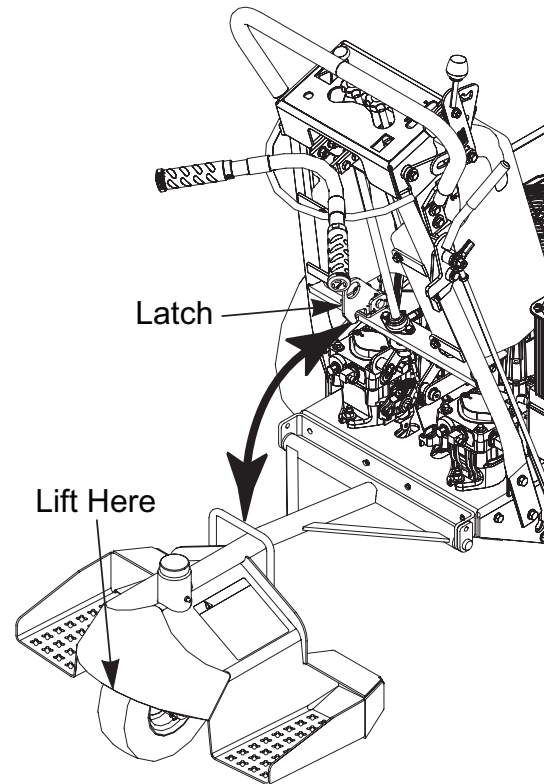
8. Be alert for holes, rocks, roots and other hidden hazards in the terrain. Keep away from any drop offs. Be aware of overhead obstructions (low limbs, etc.), underground obstacles (sprinklers, pipes, tree roots, etc.). Cautiously enter a new area. Be alert for hidden hazards.
9. Always install and remove the ride-on attachment as instructed.
10. Stop the engine and wait for all moving parts to come to a complete stop before stepping off the ride-on attachment.
11. Remove the key and engage the parking brake when leaving the mower.

## 4.2 TRANSPORTING

Place the ride-on attachment in the transport position when loading or unloading the mower from a trailer or operating in reverse.

### TO LOCK IN THE TRANSPORT POSITION:

1. Place your hand at the rear of the ride-on attachment. See Figure 4-1.
2. Lift upward to lock the ride-on attachment in the transport position. See Figure 4-1.



**FIGURE 4-1**

### TO RELEASE FROM THE TRANSPORT POSITION

1. Place your hand at the rear of the ride-on attachment.
2. Lift upward and release the latch lever.
3. Stand to the side of the machine and carefully lower the ride-on attachment until the pivot wheel is firmly on the ground.

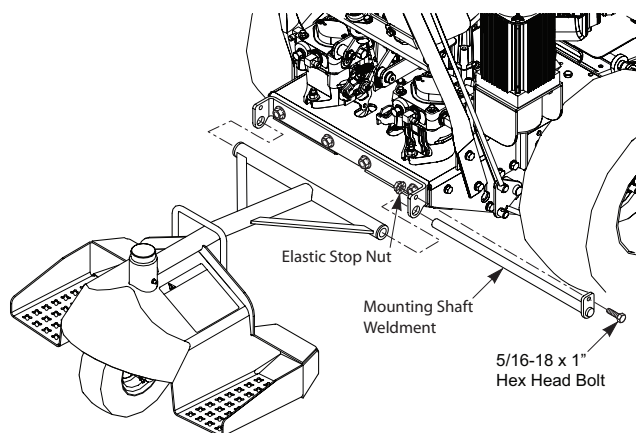


## 5.1 REMOVAL INSTRUCTIONS

### ***-NOTE-***

***Use the illustrated parts list as a part number reference when following the assembly instructions.***

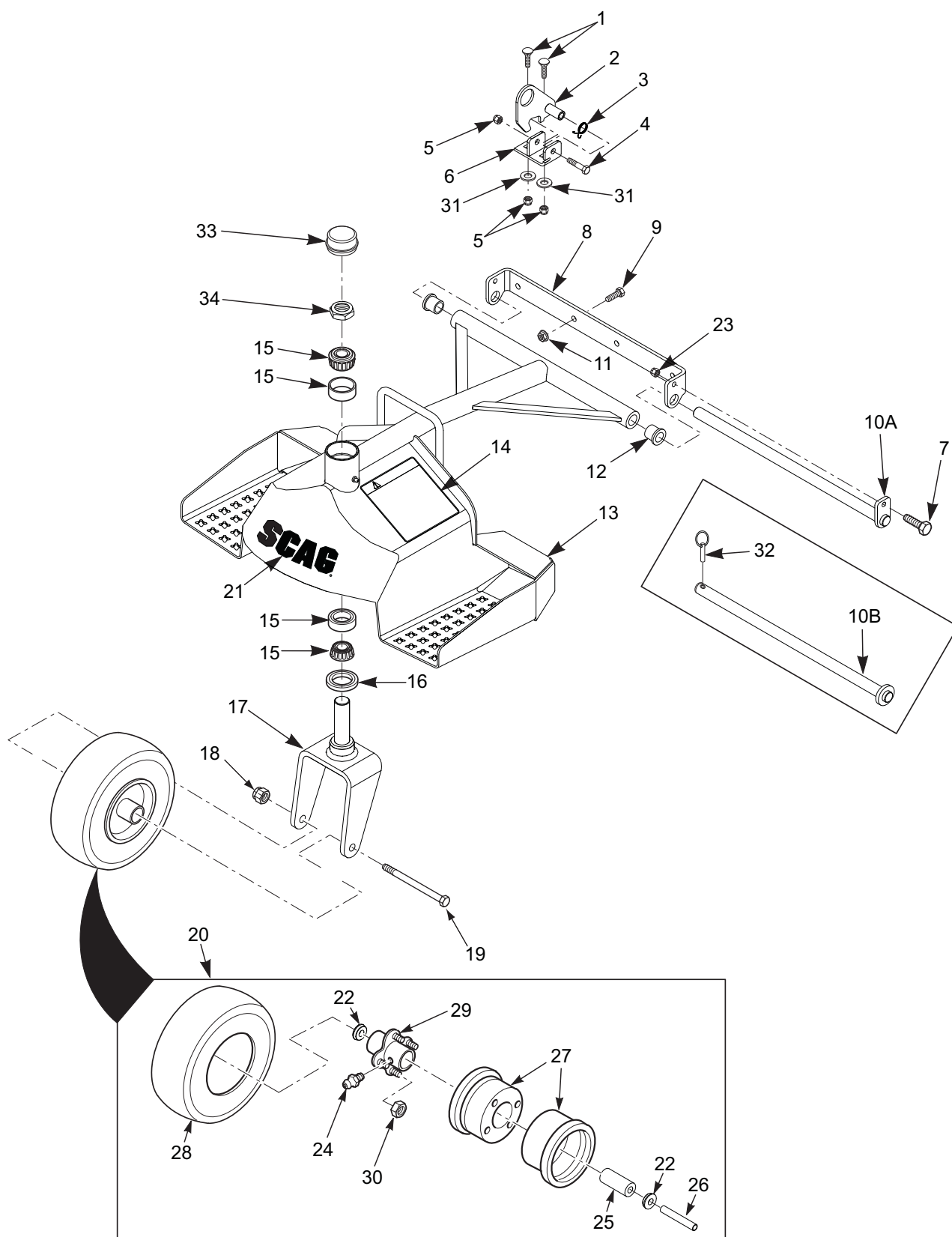
1. Remove the hardware securing the mounting shaft weldment to the mounting bracket, one (1) 5/16-18 x 1" hex head bolt and one (1) 5/16-18 elastic stop nut. See Figure 5-1.
2. Remove the mounting shaft weldment securing the ride-on attachment to the machine. See Figure 5-1.
3. Retain the mounting shaft weldment and mounting hardware as they will be needed to reinstall the ride-on attachment.



**FIGURE 5-1**

**NOTES**

## RS-S ASSEMBLY



## RS-S ASSEMBLY

Ref. No.	Part Number	Description	Ref. No.	Part Number	Description
1	04003-23	Bolt, Carriage 3/8-16 x 1"	18	04021-07	Nut, Elastic Stop 1/2-13
2	452012	Latch Weldment	19	04001-37	Bolt, Hex Head 1/2-13 x 5-1/2"
3	483779	Spring, Latch	20	48307	Caster Wheel Assy.
4	04001-46	Bolt, Hex Head 3/8-16 x 2-1/4"	21	48314	Decal, Scag Logo
5	04021-09	Nut, Elastic Stop 3/8-16	22	481770	Bearing, Oilite
6	452011	Mounting Bracket Weldment	23	04021-10	Nut, Elastic Stop 5/16-18
7	04001-09	Bolt, Hex Head 5/16-18 x 1"	24	48114-03	Grease Fitting, 45 Degree 1/4-28
8	424853	Mounting Bracket, Sulky	25	481769	Roller Bearing
9	04001-19	Bolt, Hex Head 3/8-16 x 1"	26	43022	Sleeve, Caster Wheel Bearing
10A	452010	Mounting Shaft Weldment	27	481772	Rim Pair, Caster Wheel
10B	452067	Mounting Shaft Weldment	28	481774	Tire Only, Caster Wheel
11	04019-04	Nut, Serrated Flange 3/8-16		481773	Inner Tube Only (not shown)
12	48100-24	Bushing, Bronze	29	481768	Hub Assy.
13	462153	Sulky Weldment (incl. #12, 14, 21)	30	481771	Tapered Nut, 5/16-24
14	483777	Decal, Warning	31	04043-04	Flatwasher, 3/8
15	481657	Bearing	32	04066-02	Quick Pin
16	481025	Seal, 2" O.D. x 1.625" Bore	33	481559	Cap, Grease
17	452000	Yoke Weldment	34	04021-20	Nut, Elastic Stop 1.0"-14

**RS-S DECALS**

 <b>WARNING</b>	
	
<p><b>TO AVOID SERIOUS BODILY INJURY:</b></p> <ul style="list-style-type: none"><li>* Do not operate on slopes greater than 20 degrees</li><li>* Always keep both hands on turning controls</li><li>* Maximum operator weight not to exceed 230 lbs</li></ul> <p><b>BEFORE LEAVING THE RIDE-ON ATTACHMENT:</b></p> <ul style="list-style-type: none"><li>* Disengage blade clutch</li><li>* Position speed control in neutral</li><li>* Apply Parking Brake</li><li>* Wait for all movement to stop</li></ul> <p><b>READ OPERATOR' MANUAL</b></p> <p>483777</p>	

**483777****SCAG**®**48314**

## LIMITED WARRANTY- COMMERCIAL ACCESSORY

---

Any part of the Scag commercial accessory manufactured by Scag and found, in the reasonable judgment of Scag, to be defective in material or workmanship, will be repaired or replaced by an Authorized Scag Service Dealer without charge for parts and labor.

The Scag accessory, including any defective part, must be returned to an Authorized Scag Service Dealer within the warranty period. The expense of delivering the accessory to the dealer for warranty work and the expense of returning it back to the owner after repair or replacement will be paid for by the owner. Scag's responsibility in respect to claims is limited to making the required repairs or replacements, and no claim of breach of warranty shall be cause for cancellation or rescission of the contract of sale of any Scag machine. Proof of purchase will be required by the dealer to substantiate any warranty claim. All warranty work must be performed by an Authorized Scag Service Dealer.

This warranty is limited to 90 days from the date of original retail purchase for any Scag accessory that is used for commercial purposes, or any other income-producing purpose including rental use.

This warranty does not cover any accessory that has been subject to misuse, neglect, negligence, or accident, or that has been operated in any way contrary to the operating instructions as specified in the Operator's Manual. The warranty does not apply to any damage to the accessory that is the result of improper maintenance, or to any accessory or parts that have not been assembled or installed as specified in the Operator's Manual.

The warranty does not cover any accessory that has been altered or modified. In addition, the warranty does not extend to repairs made necessary by normal wear, or by the use of parts or accessories which, in the reasonable judgment of Scag, are either incompatible with the Scag mower or adversely affect its operation, performance or durability. This warranty does not cover engines and electric starters, which are warranted separately by their manufacturer.

Scag Power Equipment reserves the right to change or improve the design of any accessory without assuming any obligation to modify any accessory previously manufactured.

All other implied warranties are limited in duration to the 90 day warranty period. Accordingly, any such implied warranties including merchantability, fitness for a particular purpose, or otherwise, are disclaimed in their entirety after the expiration of the appropriate ninety day warranty period. Scag's obligation under this warranty is strictly and exclusively limited to the repair or replacement of defective parts and Scag does not assume or authorize anyone to assume for them any other obligation. Some states do not allow limitations on how long an implied warranty lasts, so the above limitation may not apply to you.

Scag assumes no responsibility for incidental, consequential or other damages including, but not limited to, expense for gasoline, oil, expense of delivering the machine to an Authorized Scag Service Dealer and expense of returning it back to the owner, mechanic's travel time, telephone or telegram charges, rental of a like product during the time warranty repairs are being performed, travel, loss or damage to personal property, loss of revenue, loss of use of the mower, loss of time, or inconvenience. Some states do not allow the exclusion or limitation of incidental or consequential damages, so the above limitation or exclusion may not apply to you.

This warranty gives you specific legal rights, and you may also have other rights which vary from state to state.