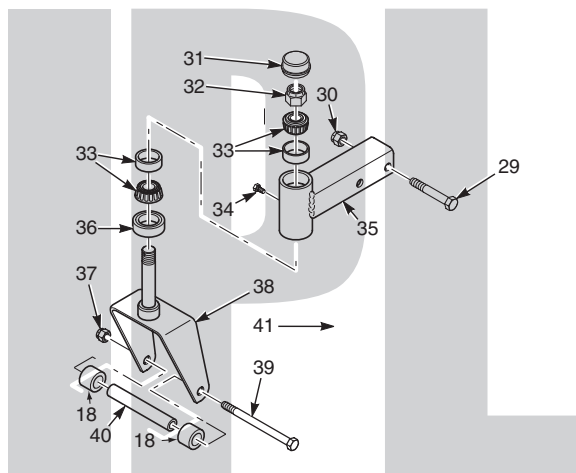


SCAG[®]

POWER EQUIPMENT



ILLUSTRATED PARTS MANUAL



Model SFZ Freedom Z

THIS MANUAL CONTAINS THE ILLUSTRATED PARTS LIST FOR MODELS:

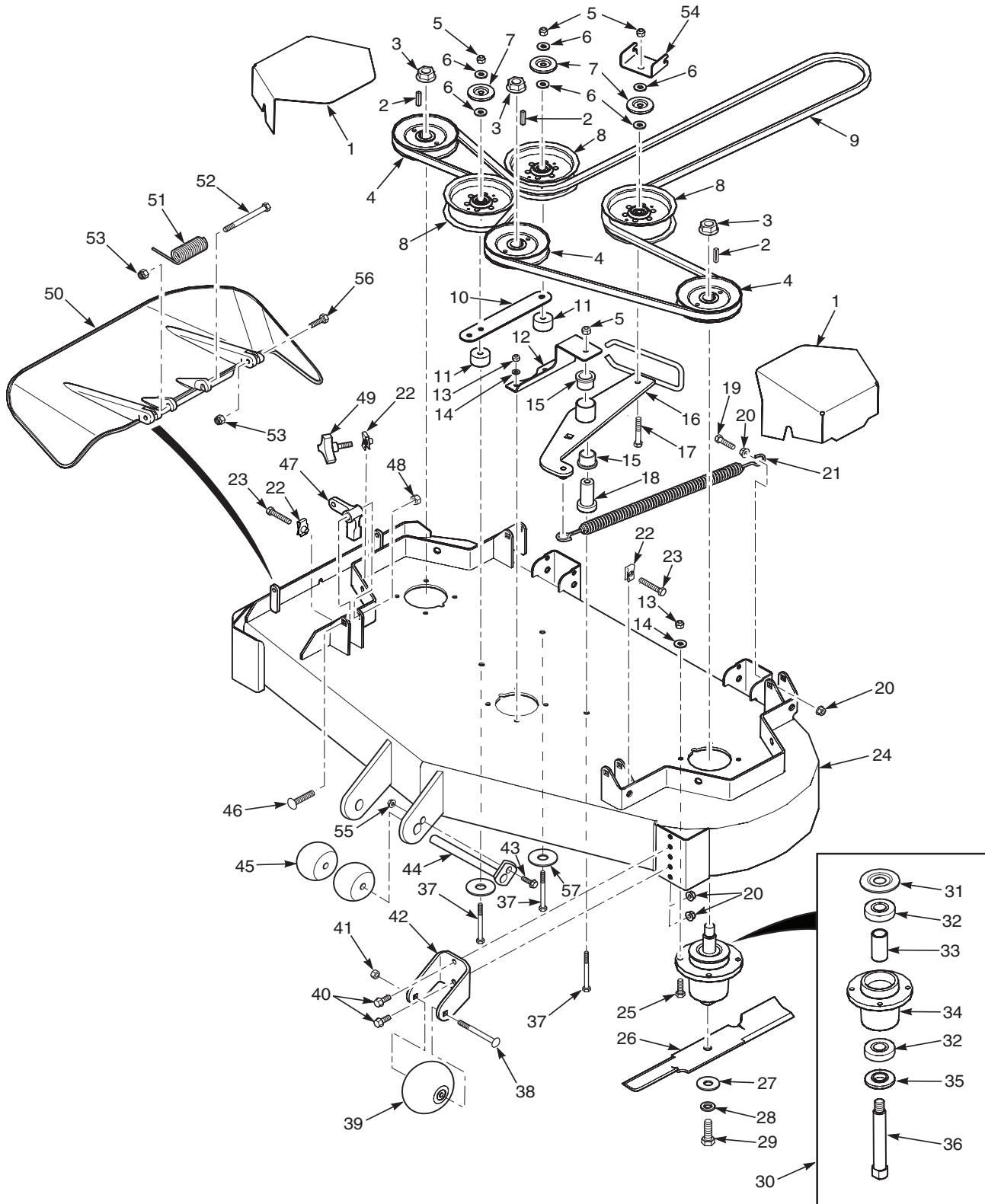
SFZ48-18FR
SFZ48-22KT
SFZ52-21FR
SFZ52-24KT

with a serial number of K4800400 to K4899999
with a serial number of K5400400 to K5499999
with a serial number of K5000400 to K5099999
with a serial number of K7000400 to K7099999

Table of Contents

48 & 52 CUTTER DECKS	2
CUTTER DECK CONTROLS - SFZ48 / 52	4
SHEET METAL COMPONENTS	6
SFZ ROLL-OVER PROTECTION SYSTEM	8
DRIVE SYSTEM COMPONENTS - SFZ48 / 52.....	10
EXHAUST AND ELECTRICAL SYSTEM - SFZ48 / 52.....	12
FUEL SYSTEM - SFZ48 / 52.....	14
REPLACEMENT DECALS AND INFORMATION PLATES	16
SFZ - ELECTRICAL SCHEMATIC	18

48 & 52 CUTTER DECKS



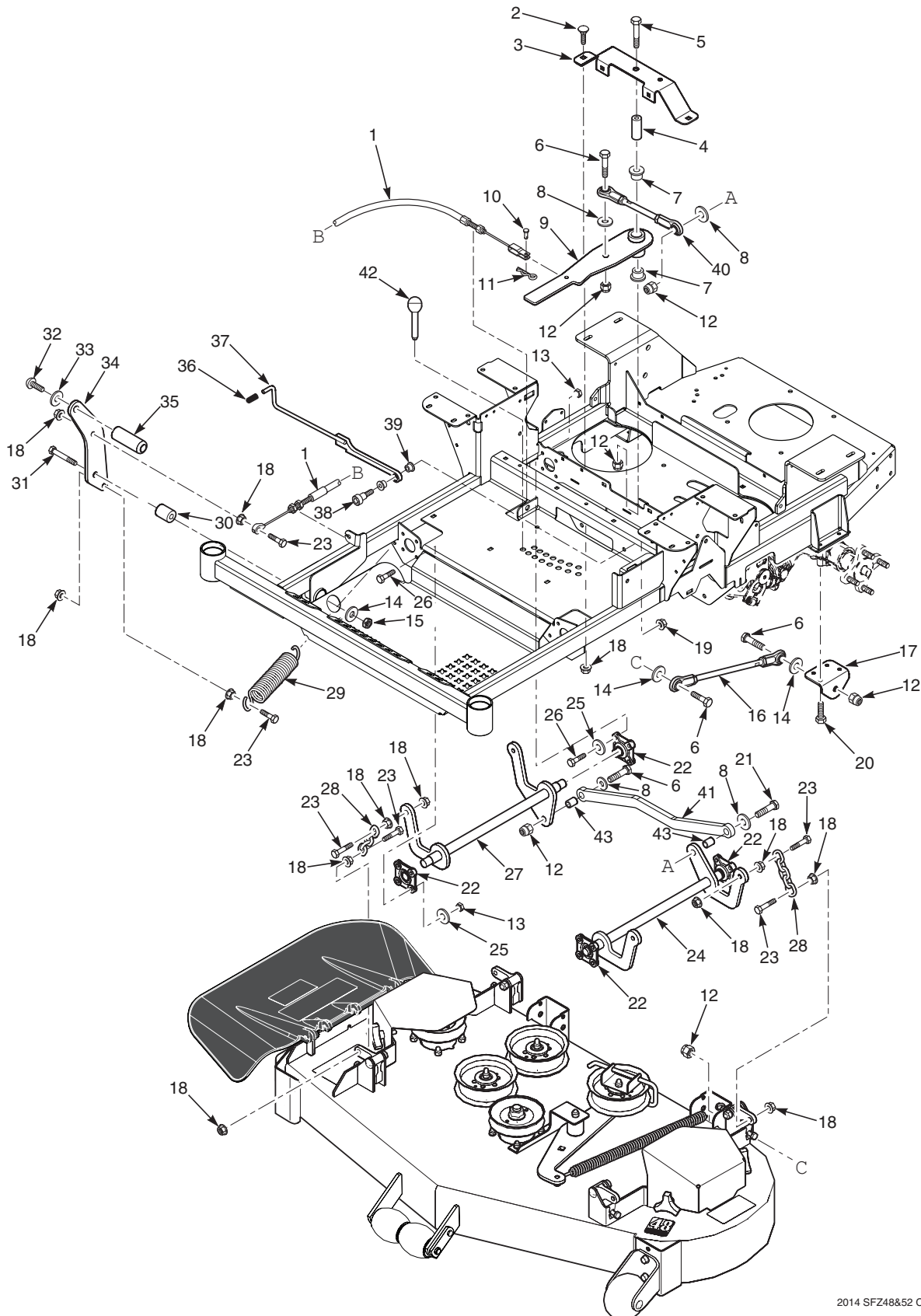
Section 8

48 & 52 CUTTER DECKS

	Part No.	Description	48	52
1	424528	Belt Cover	x	x
2	04063-01	Key, 1/4 x 1/4 x 1-1/4"	x	x
3	04112-06	Nut, 3/4-16 Spiral Lock	x	x
4	483323	Pulley, 5.13" OD - 25mm Bore	x	
	483324	Pulley, 5.73" OD - 25mm Bore		x
5	04021-09	Nut, Elastic Stop 3/8-16	x	x
6	04043-04	Flatwasher, 3/8-.391 x .938 x .105	x	x
7	424367	Dust Shield	x	x
8	483422	Pulley, 5" Idler	x	x
9	483325	Belt, Cutter Deck	x	
	483326	Belt, Cutter Deck		x
10	424479	Brace, Pulley	x	x
11	43711	Spacer	x	x
12	424548	Support, Idler Pivot	x	
	424547	Support, Idler Pivot		x
13	04021-22	Nut, Elastic Stop	x	x
14	04030-03	Lockwasher, 5/16 Spring	x	x
15	483453-03	Bearing	x	x
16	462037	Idler Arm (incl. item #15)	x	x
17	04001-31	Bolt, Hex Head 3/8-16 x 2-1/2"	x	x
18	43708	Pivot, Idler	x	x
19	04001-136	Bolt, Hex Head 3/8-16 x 1-1/2 Gr.8	x	x
20	04019-04	Nut, Serrated Flange 3/8-16	x	x
21	483375	Spring, Idler	x	x
22	04110-03	U-Nut, 3/8-16	x	x
23	04107-04	Bolt, Hex Head 3/8-16 x 2" Special Lock	x	x
24	462039	Cutter Deck w/Decals, SFZ48	x	
	462040	Cutter Deck w/Decals, SFZ52		x
25	4001-11	Bolt, Hex Head 5/16-18 x 1-1/2"		
26	482877	Cutter Blade, 16-1/2"	x	
	482878	Cutter Blade, 18"		x
		"		

	Part No.	Description	48	52
27	04043-06	Flatwasher, 5/8-.688 x 1.75 x .134 HD		x
			x	x
28	04030-07	Lockwasher, 1/2 Spring	x	x
29	04001-121	Bolt, Hex Head 5/8-11 x 1-1/2"	x	x
30	461950	Spindle Assembly	x	x
31	483304	Debris Shield	x	x
32	483303	Bearing	x	x
33	43693	Spacer	x	x
34	462014	Spindle Housing Assembly (Incl. item #32, 33)		x
			x	x
35	43694	Protector, Bearing	x	x
36	43695	Shaft, Spindle	x	x
37	04001-77	Bolt, Hex Head 3/8-16 x 3-1/2"	x	x
38	04003-26	Bolt, Carriage 3/8-16 x 4"	x	x
39	481632	Wheel, Anti-Scalp	x	x
40	04017-27	Bolt, Hex Head 3/8-16 x 1" Ser. Flg.	x	x
41	04021-05	Nut, Center Lock 3/8-16	x	x
42	422478	Bracket, Anti-Scalp	x	x
43	04001-09	Bolt, Hex Head 5/16-18 x 1"	x	x
44	451926	Shaft Weldment	x	x
45	482295	Wheel, Anti-Scalp	x	x
46	04003-42	Bolt, Carriage 7/16-14 x 2-1/4"	x	x
47	483361	Lever, Deck Level	x	x
48	04021-11	Nut, Elastic Stop 7/16-14	x	x
49	481625-01	Knob w/Stud	x	x
50	462031	Discharge Chute Assy. SFZ48	x	
	462032	Discharge Chute Assy. SFZ52		x
51	482245	Spring, Discharge Chute	x	x
52	04001-154	Bolt, Hex Head 5/16-18 x 4-3/4"	x	x
53	04021-10	Nut, Elastic Stop 5/16-18	x	x
54	424615	Bracket, Belt Guide	x	x
55	04019-03	Nut, Serrated Flange 5/16-18	x	x
56	04001-12	Bolt, Hex Head 5/16-18 x 1-3/4"	x	x
57	04041-38	Flatwasher, 3/8-.406 x 2.25 x .1875	x	x

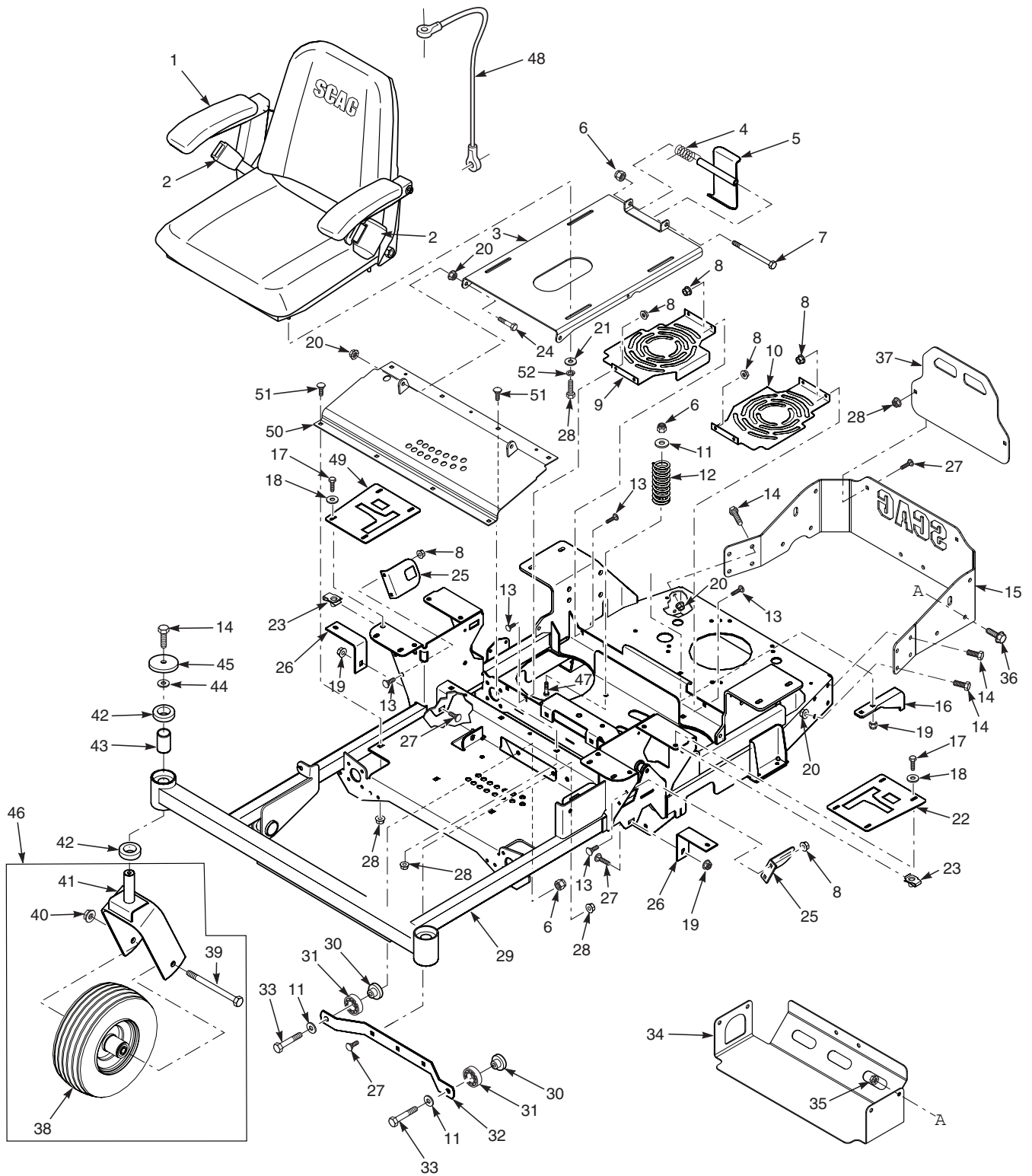
CUTTER DECK CONTROLS - SFZ48 / 52



CUTTER DECK CONTROLS - SFZ48 / 52

Ref. No.	Part No.	Description
1	483341	Cable, Deck Lift
2	04003-31	Bolt, Carriage 3/8-16 x 3/4"
3	424476	Support, Idler Arm
4	43710	Spacer, Deck Lift Pivot
5	04001-90	Bolt, Hex Head 1/2-13 x 3-3/4"
6	04001-72	Bolt, Hex Head 1/2-13 x 2"
7	483453-03	Bearing
8	04040-07	Flatwasher, 1/2-.531 x 1.06 x .095
9	461999	Deck Lift Bellcrank Assembly
10	04064-17	Clevis Pin, 5/16 x 3/4"
11	04062-01	Hair Pin, .094 x 1.62"
12	04021-07	Nut, Elastic Stop 1/2-13
13	04021-10	Nut, Elastic Stop 5/16-18
14	04040-13	Flatwasher, 1/2-.562 x 1.375 x .109
15	04021-09	Nut, Center Lock 1/2-13
16	483332	Linkage, Push Arm
17	424489	Bracket, Push Arm Link
18	04019-04	Nut, Serrated Flange 3/8-16
19	04021-09	Nut, Elastic Stop 3/8-16
20	04001-49	Bolt, Hex Head 5/16-18 x 3"
21	04001-190	Bolt, Hex Head 1/2-13 x 2-3/4"
22	483334	Bearing, Deck Lift
23	04001-20	Bolt, Hex Head 3/8-16 x 1-1/2"
24	451868	Weldment, Deck Lift LH
25	04040-14	Flatwasher, 1/4-.312 x .750 x .065
26	04001-09	Bolt, Hex Head 5/16-18 x 1"
27	451867	Weldment, Deck Lift RH
28	482628	Chain, Deck lift
29	483374	Spring, Deck Lift
30	43710	Sleeve, Deck Lift Pivot
31	04001-74	Bolt, Hex Head 1/2-13 x 3"
32	04105-01	Bolt, Head Socket 5/8-11 x 1-1/2"
33	04030-07	Lockwasher, 5/8 Spring
34	424535	Pedal, Foot Bracket
35	424504	Foot Pedal
36	483492	Grip, Deck Latch
37	491254	Weldment, Deck Latch
38	04009-06	Bolt, Shoulder 1/2 x 1/2
39	483453-10	Bearing
40	483328	Linkage Assembly, Deck Lift
41	426579	Link, Deck Lift
42	483498	Pin, Height Adjuster
43	43957	Sleeve

SHEET METAL COMPONENTS

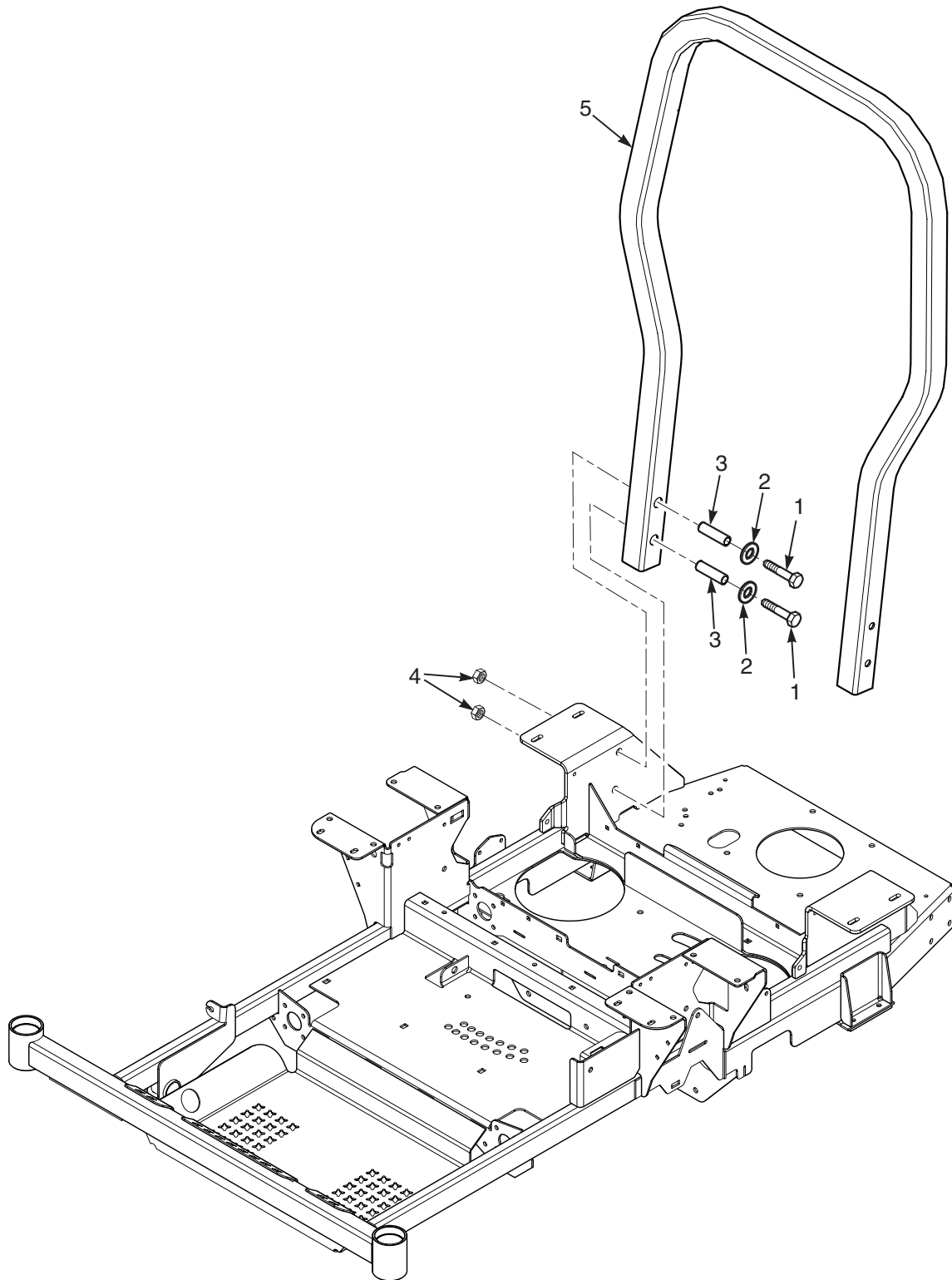


SHEET METAL COMPONENTS

	Part No.	Description
1	485211	Seat Assembly
	485162	Back Cushion
	485163	Bottom Cushion
	483549	Arm Rest Kit
	485239	Seat Pan
2	485164	Seat Belt Assembly, Retractable
	461990	Hardware Package, Mounting
3	462707	Seat Base w/Decal
4	483371	Spring, Seat Latch
5	451883	Seat Latch
6	04021-09	Nut, Elastic Stop 3/8-16
7	04001-100	Bolt, Hex Head 3/8-16 x 6"
8	04019-02	Nut, Serrated Flange 1/4-20
9	424585	Cover, Fan RH
10	424550	Cover, Fan LH
11	04041-07	Flatwasher, 3/8-.391 x .938 x .105
12	483372	Spring, Seat
13	04003-07	Bolt, Carriage 1/4-20 x 1"
14	04001-19	Bolt, Hex Head 3/8-16 x 1"
15	426043	Rear Bumper
16	424523	Bracket, Anti-Rotation
17	04001-14	Bolt, Hex Head 1/4-20 x 1"
18	04040-14	Flatwasher, 1/4-.312 x .750 x .065
19	04021-10	Nut, Elastic Stop 5/16-18
20	04019-04	Nut, Serrated Flange 3/8-16
21	04040-15	Flatwasher, 5/16-.375 x .875 x .083
22	462023	Control Plate LH
23	04110-01	U-Nut 1/4-20
24	04001-20	Bolt, Hex Head 3/8-16 x 1-1/2"
25	424511	Bracket, Switch Mount
26	424516	Bracket, Tank Mount

Ref. No.	Part No.	Description
27	04003-12	Bolt, Carriage 5/16-18 x 3/4"
28	04001-08	Bolt, Hex Head 5/16-18 x 3/4"
29	462708	Main Frame w/Decals
30	43703	Spacer, Bearing
31	483379	Bearing
32	424480	Support, Deck Guide
33	04001-21	Bolt, Hex Head 3/8-16 x 1-3/4"
34	426044	Heatshield
35	04019-04	Nut, Serrated Flange 3/8-16
36	04017-26	Bolt, Hex Head Serrated Flange 3/8-16 x 3/4"
37	426053	Engine Guard
38	485207	Caster Wheel Assembly
39	04001-80	Bolt, Hex Head 1/2-13 x 6-1/2"
40	04021-07	Nut, Elastic Stop 1/2-13
41	451845	Yoke, Caster Wheel
42	483466	Bearing
	424636	Spacer, Yoke (not shown)
43	43736	Spacer, Caster Bearing
44	04040-11	Flatwasher, 7/16-.50 x 1.250 x .083
45	04041-38	Flatwasher, 3/8-.406 x 2.25 x .188
46	462716	Caster Wheel Assembly w/Yoke
47	04003-11	Bolt, Carriage 3/8-16 x 1-1/4"
48	483559	Cable, Seat Stop
49	462024	Control Plate RH
50	462706	Weldment, Deck Lift Cover w/Decal
51	04003-14	Bolt, Carriage 5/16-18 x 1/2"
52	04030-03	Lockwasher, 5/16" Spring

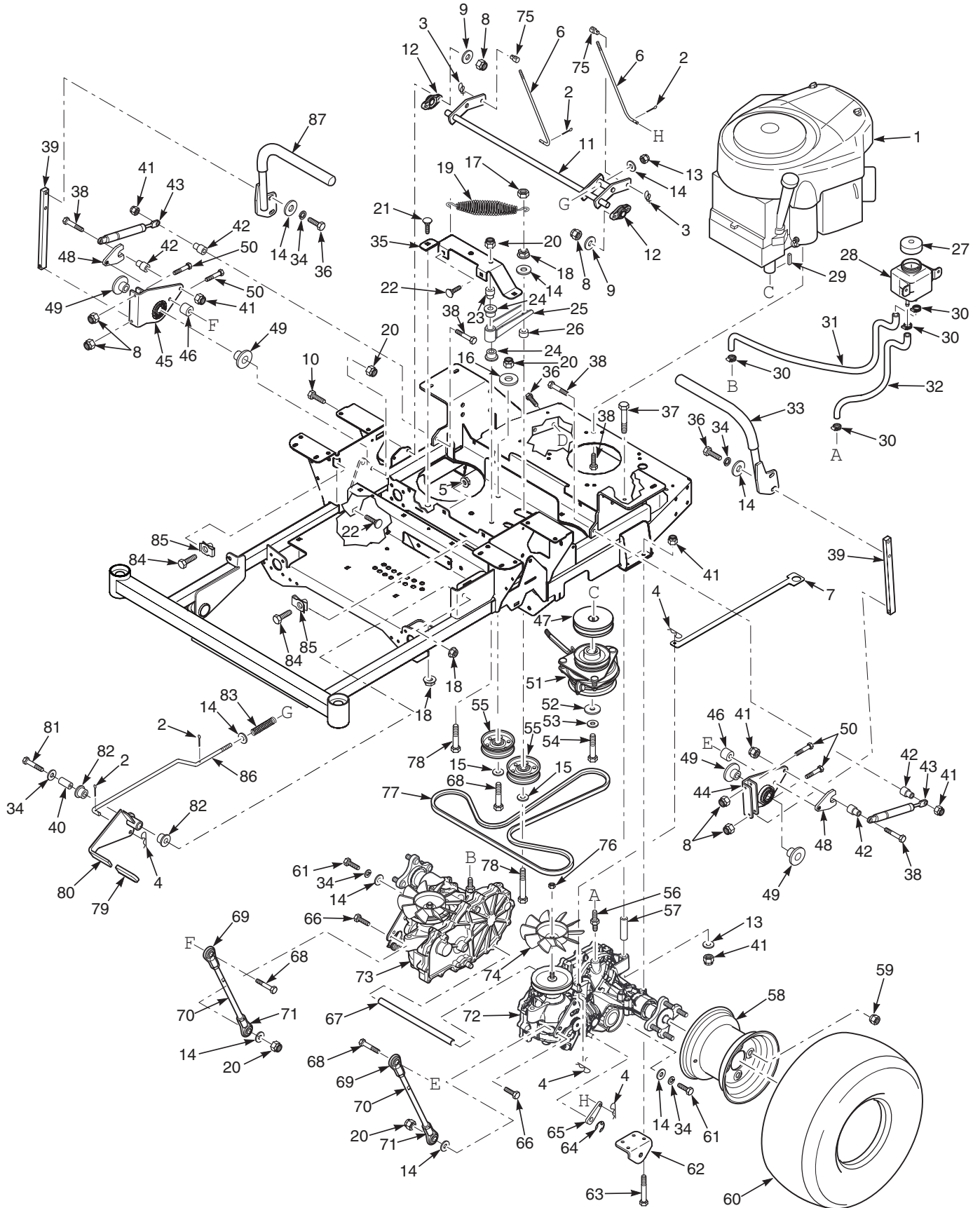
SFZ ROLL-OVER PROTECTION SYSTEM



SFZ ROLL-OVER PROTECTION SYSTEM

Ref. No.	Part No.	Description
1	04001-184	Bolt, Hex Head 1/213 x 3-1/4" Gr. 8
2	04040-07	Flatwasher, 1/2 - .531 x 1.062 x .095
3	43743	Bushing, SFZ ROPS
4	04117-04	Nut, Flanged Elastic Stop, 1/2-13
5	462021	ROPS, SFZ48, SFZ52

DRIVE SYSTEM COMPONENTS - SFZ48 / 52

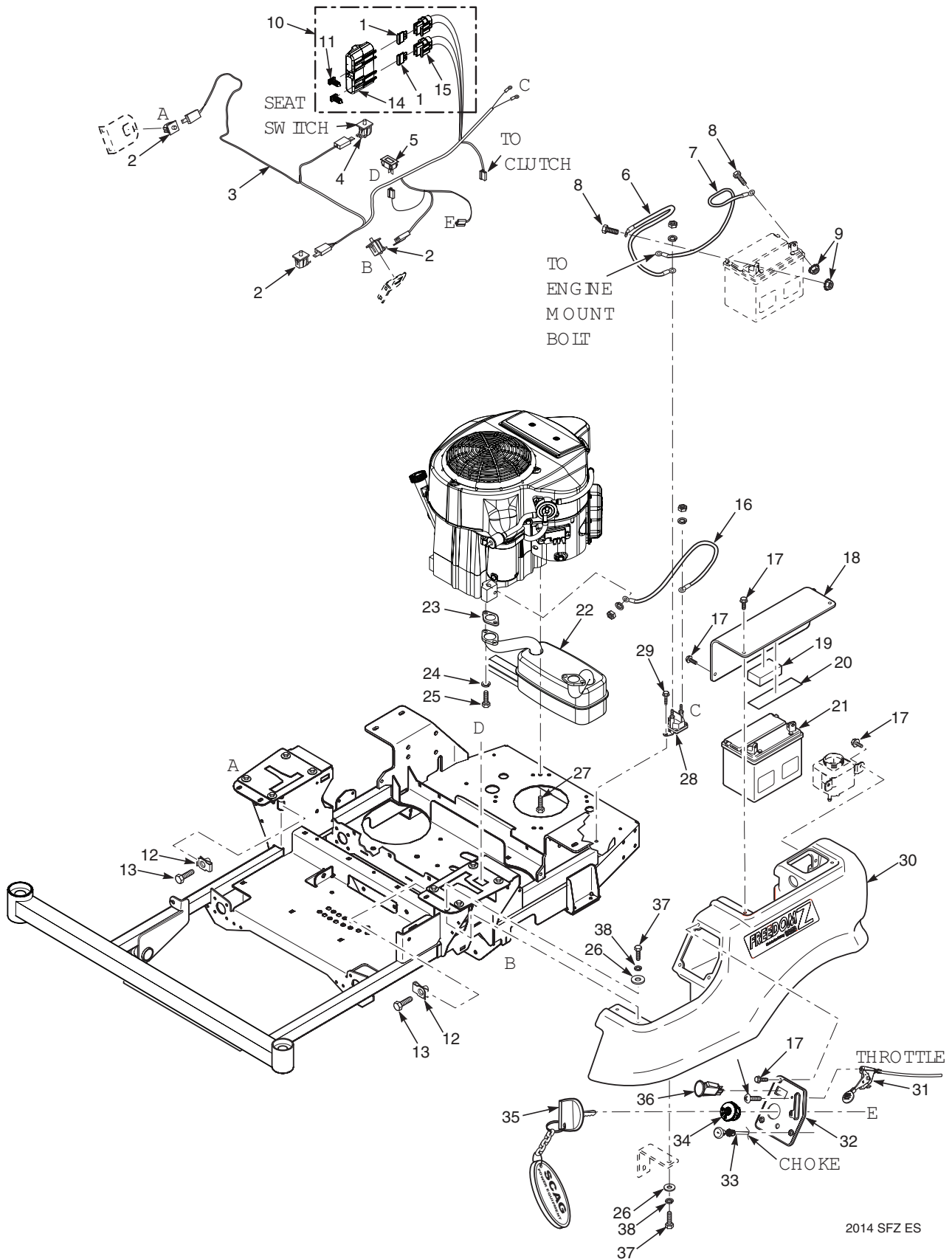


DRIVE SYSTEM COMPONENTS - SFZ48 / 52

Ref. No.	Part No.	Description	Ref. No.	Part No.	Description
1	**485192	Engine, Kawasaki 18FR (FR600V)	49	43719	Spacer, Linkage
	**485338	Engine, Kohler 22KT (KT725)	50	04001-04	Bolt, Hex Head 1/4-20 x 1-1/2"
	**485219	Engine, Kawasaki 21FR (FS651V)	51	462715	Electric Clutch Assembly
	**485341	Engine, Kohler 24KT (KT735)		04063-19	Key, 1/4 x 1/4 x 3/4" (not shown)
2	04061-01	Cotter Pin, 3/32 x 1"	52	04041-28	Flatwasher, 7/16-.469 x 1.75 x .25
3	04069-01	Pin, Rue Cotter 3/8" Dia.	53	04030-05	Lockwasher, 7/16" spring
4	04062-02	Hair Pin, .080 x 1.19"	54	04102-03	Bolt, Hex Head 7/16-20 x 2-1/4" Patch
5	04019-03	Nut, Serrated Flange 5/16-18	55	483638	Pulley, 3-1/2" Dia.
6	44165	Rod, Brake Adjustment	56	482800-04	Fitting, Transmission
7	426591	Lever, Dump Valve	57	43700	Spacer, Axle
8	04021-08	Nut, Elastic Stop 1/4-20	58	481868	Rim w/Valve Stem
9	04040-14	Flatwasher, 1/4-.312 x .750 x .065	59	04028-02	Wheel Nut, 1/2-20
10	04017-07	Bolt, Serrated Flange 1/4-20 x 1-1/4"	60	483390	Wheel Assembly
11	451884	Weldment, Brake Lever		483389	Tire, 20 x 10-8 2-Ply
12	483504	Bearing	61	04001-46	Bolt, Hex Head 3/8-16 x 2-1/4"
13	04040-15	Flatwasher, 5/16-.375 x .875 x .083	62	424489	Bracket, Pusharm Link
14	04041-07	Flatwasher, 3/8-.391 x .938 x .105	63	04001-49	Bolt, Hex Head 5/16-18 x 3"
15	04043-04	Flatwasher, 3/8-.391 x .938 x .105 HD	64	HG53019	Clip, Brake Lever (order through Hydro-Gear)
16	04041-11	Flatwasher, 3/8-.406 x 1.5 x 7 GA.	65	HG52639	Lever, Brake (order through Hydro-Gear)
17	04021-05	Nut, Center Lock 3/8-16	66	04001-32	Bolt, Hex Head 3/8-16 x 1-1/4"
18	04019-04	Nut, Serrated Flange 3/8-16	67	43701	Spacer, Axle
19	483087	Spring, Transmission Idler	68	04001-45	Bolt, Hex Head 3/8-16 x 2"
20	04021-09	Nut, Elastic Stop 3/8-16	69	483340	Rod End, 3/8-24 LH
21	04003-31	Bolt, Carriage 3/8-16 x 3/4"	70	483337	Linkage, Pump (incl. #69, 71)
22	04003-12	Bolt, Carriage 5/16-18 x 3/4"	71	483339	Roc End, 3/8-24 RH
23	43715	Shaft Pivot, Idler Arm	72	485208	Transaxle Assy., LH (ZK-KCBC-3LKG-3NXX)
24	483453-04	Bearing	73	485209	Transaxle Assy., RH (ZK-GCBC-3LKF-2NXX)
25	462122	Transmission Idler Arm Assembly	74	HG53823	Fan (order through Hydro-Gear)
26	43720	Spacer, Idler Pulley	75	43726	Joint, Swivel
27	483514	Cap	76	HG44133	Fan Nut (order through Hydro-Gear)
28	483438	Reservoir Assembly	77	483314	Belt, Transmission Drive
29	04063-19	Key, 1/4 x 1/4 x 3/4"	78	04001-54	Bolt, Hex Head 3/8-16 x 3"
30	48136-05	Clamp, 0.87" Max Dia.	79	482102	Grip, Brake Handle
31	483431	Hose, RH Transmission	80	462010	Brake Handle Assembly
32	483432	Hose, LH Transmission	81	04001-31	Bolt, Hex Head 3/8-16 x 2-1/2"
33	462433	Handle Bar Assembly LH, w/Grip	82	483453-05	Bearing
	484376	Grip	83	483538	Spring, Brake
34	04041-07	Flatwasher, 3/8-.391 x .938 x .105	84	04107-01	Bolt, Hex Head 3/8-16 x 1-1/4" Special Lock
35	424476	Support, Idler Arm	85	04110-03	U-Nut, 3/8-16
36	04001-19	Bolt, Hex Head 3/8-16 x 1"	86	44157	Rod, Brake Linkage
37	04001-95	Bolt, Hex Head 5/16-18 x 5"	87	462434	Handle Bar Assembly RH, w/Grip
38	04001-11	Bolt, Hex Head 5/16-18 x 1-1/2"		484376	Grip
39	424498	Bar, Control Lever			
40	43969	Pivot, Brake Lever			
41	04021-10	Nut, Elastic Stop 5/16-18			
42	43602	Spacer, Pump Dampener			
43	484193	Dampener			
44	462127	Control Link, LH			
45	462128	Control Link, RH			
46	43674	Spacer			
47	483320	Pulley, 4-1/2" Dia. 1" Bore			
48	424687	Nut, Control Linkage			

** Available through engine manufacturer.

EXHAUST AND ELECTRICAL SYSTEM - SFZ48 / 52



2014 SFZ ES

EXHAUST AND ELECTRICAL SYSTEM - SFZ48 / 52

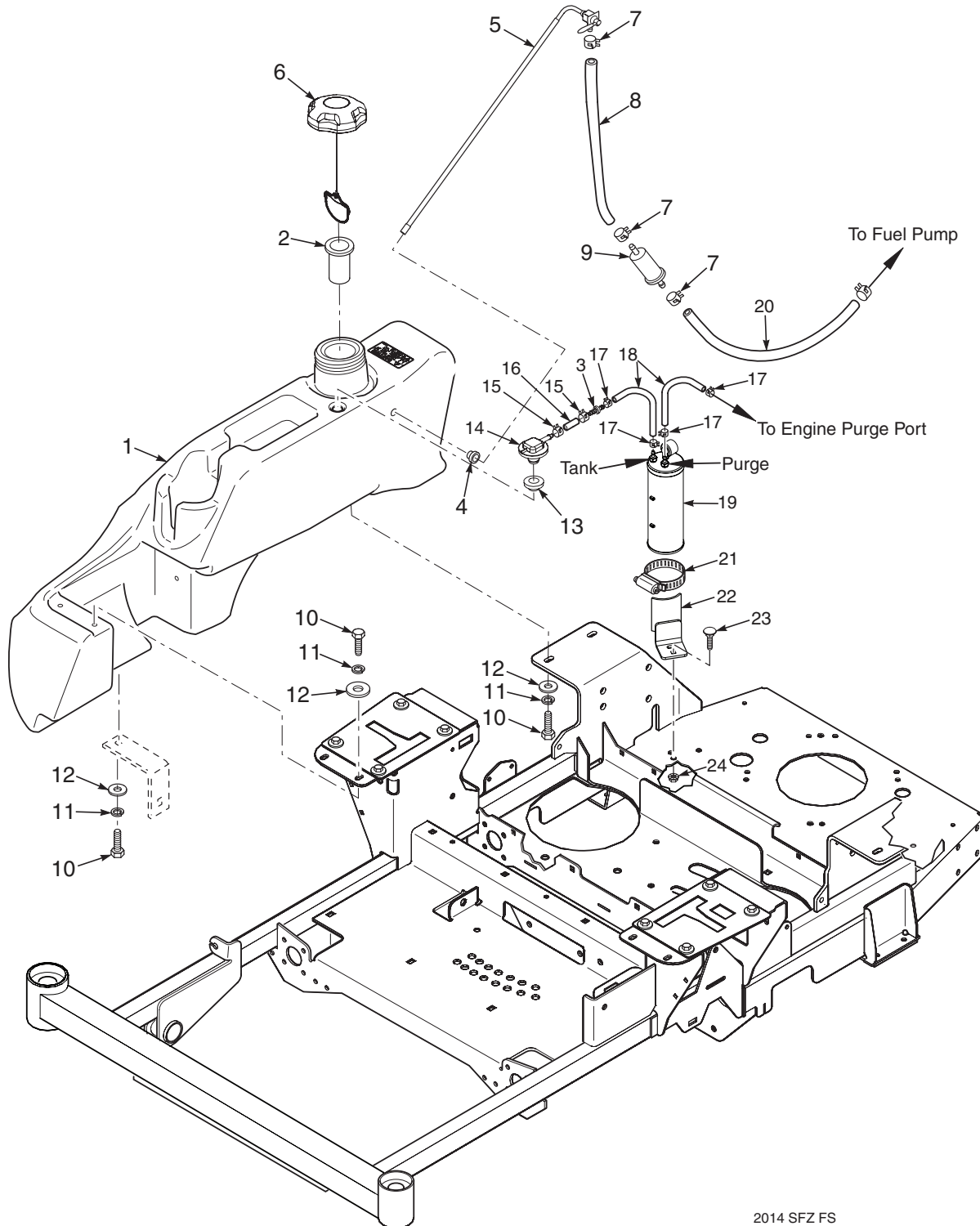
Ref. No.	Part No.	Description
1	48298	Fuse, 20 amp
2	483473	Switch
3	484433	Wire Harness, Main
	483529	Wire Harness Adapter, Kawasaki (not shown)
4	483473	Switch, Seat
5	485216	Hourmeter
6	48029-13	Battery Cable, Red 25"
7	48029-11	Battery Cable, Black 27"
8	04001-44	Bolt, Hex Head 1/4-20 x 1/2"
9	04020-02	Nut, 1/4-20
10	483642	Double Fuse Assy. (incl. items 1, 14, 15, 46)
11	482588	Clip, Wire
12	04110-03	U-Nut, 3/8-16
13	04107-03	Bolt, Hex Head 3/8-16 x 1-1/4" Special Lock
14	483571	Cover, Sealed Double
15	483629	Fuse Holder
16	48029-09	Battery Cable, Red 9"
17	04017-04	Bolt, Hex Head 1/4-20 x 1/2" Serr. Flange
18	461996	Battery Cover (incl. items 19 & 20)
19	483452	Pad, Battery Hold Down
20	483508	Rubber Pad
21	*483665	Battery (not avail. through Scag)
22	485193	Muffler, Kawasaki FR600V
	485225	Muffler, Kawasaki FR651V
	485336	Muffler, Kohler KT
23	**	Exhaust Gasket
24	**	Lockwasher
25	**	Bolt
26	04040-15	Flatwasher, 5/16-.375 x .875 x .083
27	04001-32	Bolt, Hex Head 3/8-16 x 1-1/4" (Kawasaki)
	04030-04	Lockwasher, 3/8" Spring (Kawasaki)

Ref. No.	Part No.	Description
28	483278	Solenoid
29	04011-14	Bolt, Self Tapping 1/2-20 x 3/4" Shakeproof
30	483364	Tank, LH
31	483434	Throttle Cable - Kawasaki
	483645	Throttle Cable - Kohler
32	462036	Instrument Panel w/Decal
33	483435	Choke Cable - Kawasaki
	483646	Choke Cable - Kohler
34	483472	Ignition Switch
35	483366	Key, Ignition
	483609	Key w/Shroud
	462069	Key Assembly w/Fob
36	483957	PTO Switch
37	04001-08	Bolt, Hex Head 5/16-18 x 3/4"
38	04030-03	Lockwasher, 5/16" Spring

* Not available through Scag Power Equipment. Purchase locally.

** Available through individual engine manufacturer.

FUEL SYSTEM - SFZ48 / 52



2014 SFZ FS

FUEL SYSTEM - SFZ48 / 52

Ref. No.	Part No.	Description
1	462681	Fuel Tank Assembly, LP - SFZ - LC
2	484279-01	Tube, Fuel Tank Insert
3	484343-01	Mender, 1/4 x 3/16 w/0.02 Hole
4	482571	Bushing, .56 Dia. Viton
5	483555	Fuel Tube Assembly
6	484286	Fuel Cap, Tethered
7	484297	Fuel Cap w/Tethered - California Models Only (not shown)
7	48059-01	Clamp, Fuel Hose 1/4"
8	483617	Fuel Hose, 1/4" Non-Perm (order by inch)
9	*	Fuel Filter
10	04001-08	Bolt, Hex Head 5/16-18 x 3/4"
11	04030-03	Lockwasher, 5/16" Spring
12	04040-15	Flatwasher, 5/16-.375 x .875 x .083
13	484285	Grommet, Viton
14	484333	Remote Vent
15	48059-02	Clamp, Fuel Hose 7/32"
16	484347	Hose, 1/4" Vapor Recovery (order by inch)
17	48059-05	Clamp, Vapor Recovery Hose
18	484345	Hose, 3/16" (order by inch)
19	484342	Carbon Canister
20	*	Fuel Hose
21	48136-17	Clamp, Hose
22	452226	Bracket Weldment, Kawasaki Models
22	452233	Bracket Weldment, Kohler Models
23	04003-12	Bolt, Carriage 5/16-18 x 3/4"
24	04019-03	Nut, Serrated Flange 5/16-18

* = Available through engine manufacturer only.

REPLACEMENT DECALS AND INFORMATION PLATES

WARNING

INSTALL BELT COVER BEFORE OPERATING MACHINE
 READ OPERATOR'S MANUAL 483402 1

WARNING

DO NOT OPERATE WITHOUT DISCHARGE CHUTE, MULCHING KIT, OR ENTIRE GRASS CATCHER INSTALLED 483405 2

IMPORTANT
 Operation on slopes can be hazardous.
 This machine was originally equipped with a Rollover Protection Device with a Roll Bar and Seat Belt.
 See your dealer if either is missing or damaged. 483425 3

DANGER



SPINNING BLADES
 KEEP CLEAR

BLADE CONTACT & THROWN OBJECTS CAN INJURE 4


FORWARD

F
REVERSE

R 5

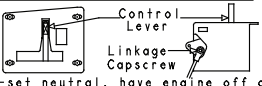
WARNING

 Replace seat only with Scag approved seat with seat mounting provisions and Scag approved seat belts.
 Failure to follow these directions could result in injury or death in the event of a rollover. 483426 6

48
COMMERCIAL GRADE 7

WARNING

ROTATING BLADES AND BELTS
 * Keep hands, feet & clothing clear
 * Keep all guards in place
 * Shut off engine & disengage blade clutch before servicing
 * Use caution in directing discharge
 * Read instruction manual before operating
DO NOT OPERATE UNLESS GRASS CATCHER, MULCHING KIT OR DISCHARGE CHUTE IS INSTALLED 483406 8


IMPORTANT ADJUSTMENT PROCEDURES
 READ OPERATOR'S MANUAL FOR MORE DETAILS
 Check tire pressure - Drive tires-8 psi -
 - Caster tires-25 psi

FREE WHEEL OPERATION
 To move machine without running engine, pull both dump valve rods up and back (located at rear of machine) and latch. Pull rods forward and latch into front slot to operate mower.

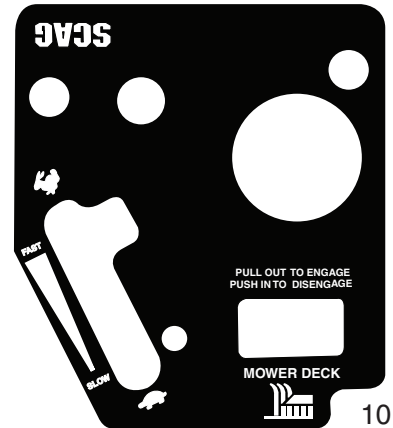
NEUTRAL ADJUSTMENT

 To re-set neutral, have engine off and control levers in neutral. Loosen upper linkage capscrew. Allow transmission to position linkage rod and tighten upper capscrew. Repeat for opposite side. If wheels still creep after adjustment, see an authorized Scag dealer.

HYDRAULIC FLUID LEVEL
 Check hydraulic fluid level while fluid is cool. Fluid level should be in sight window. Fill with 20W50 motor oil only.

IMPORTANT
 Do not overfill. Room for hot fluid expansion must be allowed or resulting expansion may cause leaks in the system.

TRACKING ADJUSTMENT

 If machine pulls to right, adjust LH control stop bolt CW (Inward) to slow left wheel down. Adjust RH control stop bolt CW (Inward) to slow right wheel down.

9




SCAG FREEDOM Z

11

DECK LATCH RELEASE

FREEDOM Z
 Made in the USA by SCAG

START/DRIVE PROCEDURE
 - Disengage mower deck drive
 - Move control levers to neutral position
 - Start Engine
 - Select forward or reverse with hydro control levers

WARNING

 Avoid serious injury or death. Read the Operator's Manual. Robotic equipment are special. Operate only on slopes you can back up. a an authorized Scag dealer. Stop blades and back down slowly. If mowing stops go up hill. Avoid sudden turns. Do not mow when children or others are around. Mower carry children even with blades off. Look down and behind before and while backing. Keep safety devices (guards, shields, switches, etc.) in place and working. Remove objects that could be thrown by the blades. (Inland operators only) 483467

12

REPLACEMENT DECALS AND INFORMATION PLATES

Ref. No.	Part No.	Description
1	483402	Decal, Belt Cover
2	483405	Decal, Warning
3	483425	Decal, ROPS
4	483505	Decal, Spinning Blades
5	481568	Decal, Traction Control
6	483633	Decal, Seat Replacement
7	483494	Decal, 48 Commercial
	483495	Decal, 52 Commercial
8	483406	Decal, Knives
9	483632	Decal, Adjustment SFZ
10	483499	Decal, Instrument Panel - SFZ48 & SFZ 52
11	483501	Decal, Front SFZ
12	485238	Decal, Cutting Height
*	483900	Decal, Warning Spark Arrestor (California only)
*	462155	Spanish Decal Kit - SFZ (not shown)
*	01411	DVD Video, Tips for Safe Operation of Your Scag Zero-Turn Mower (not shown)

SFZ - ELECTRICAL SCHEMATIC

(shown with Key Off, PTO Off, Park Brake Applied, Control Handles in Neutral, Seat Switch Disengaged)

