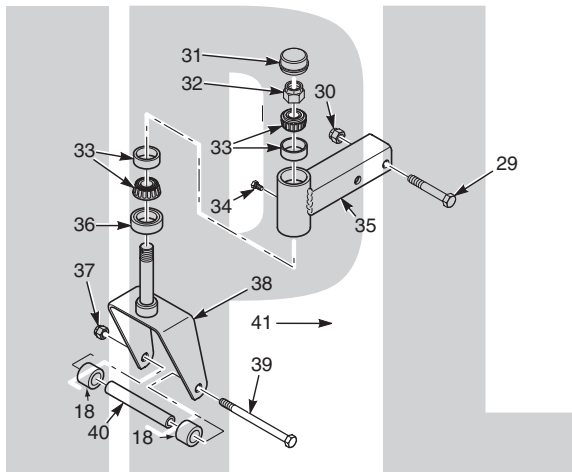


SCAG[®]

POWER EQUIPMENT



ILLUSTRATED PARTS MANUAL



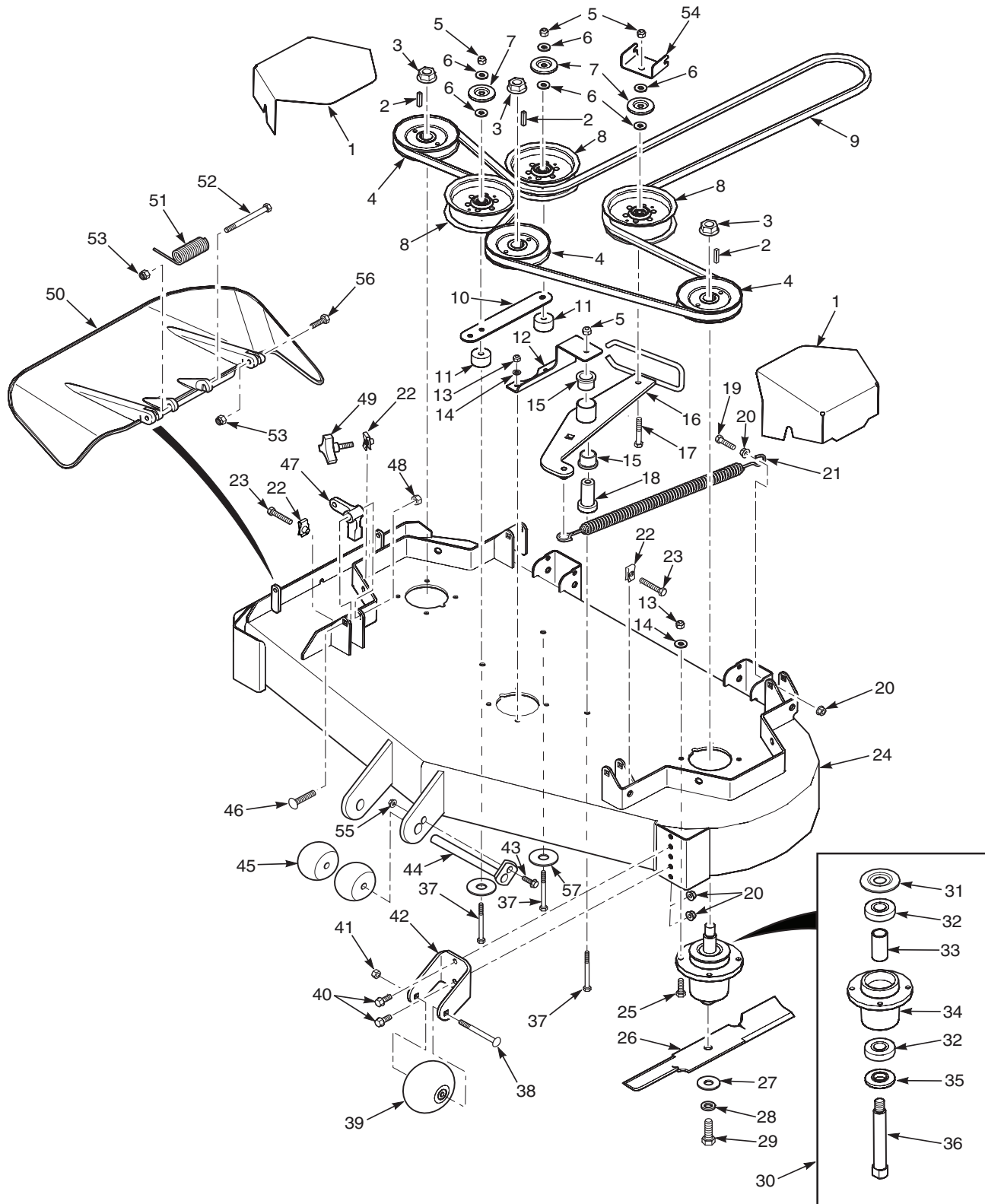
Model SFZ48 Freedom Z

THIS MANUAL CONTAINS THE ILLUSTRATED PARTS LIST FOR MODELS:
SFZ48-18FS with a serial number of J8100400 to J8199999
SFZ48-24BS with a serial number of J8200400 to J8299999

Table of Contents

48" CUTTER DECK.....	2
CUTTER DECK CONTROLS - SFZ48	4
SHEET METAL COMPONENTS	6
SFZ ROLL-OVER PROTECTION SYSTEM	8
DRIVE SYSTEM COMPONENTS - SFZ48.....	10
EXHAUST AND ELECTRICAL SYSTEM - SFZ48.....	12
SFZ48 FUEL SYSTEM	14
ZT-3100 HYDRAULIC AXLE ASSEMBLY.....	16
REPLACEMENT DECALS AND INFORMATION PLATES	18
ELECTRICAL SCHEMATIC	20

48" CUTTER DECK



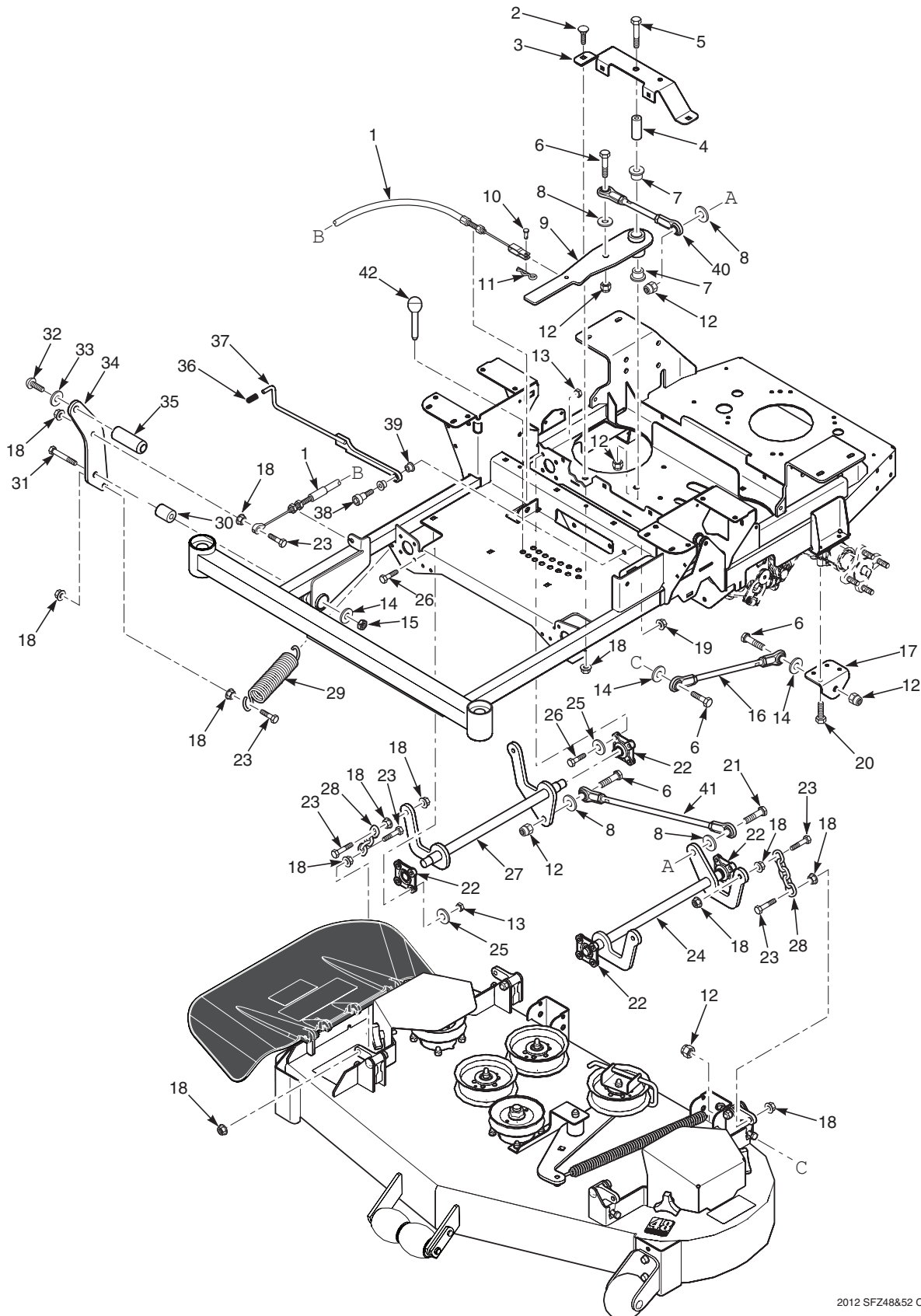
48" CUTTER DECK

	Part No.	Description
1	424528	Belt Cover
2	04063-01	Key, 1/4 x 1/4 x 1-1/4"
3	04112-06	Nut, 3/4-16 Spiral Lock
4	483323	Pulley, 5.13" OD - 25mm Bore
5	04021-09	Nut, Elastic Stop 3/8-16
6	04043-04	Flatwasher, 3/8-.391 x .938 x .105
7	424367	Dust Shield
8	483422	Pulley, 5" Idler
9	483325	Belt, Cutter Deck
10	424479	Brace, Pulley
11	43711	Spacer
12	424548	Support, Idler Pivot
13	04021-22	Nut, Elastic Stop
14	04030-03	Lockwasher, 5/16 Spring
15	483453-03	Bearing
16	462037	Idler Arm (incl. item #15)
17	04001-31	Bolt, Hex Head 3/8-16 x 2-1/2"
18	43708	Pivot, Idler
19	04001-136	Bolt, Hex Head 3/8-16 x 1-1/2 Gr.8
20	04019-04	Nut, Serrated Flange 3/8-16
21	483375	Spring, Idler
22	04110-03	U-Nut, 3/8-16
23	04107-04	Bolt, Hex Head 3/8-16 x 2" Special Lock
24	462039	Cutter Deck w/Decals, SFZ48
25	4001-11	Bolt, Hex Head 5/16-18 x 1-1/2"
26	482877	Cutter Blade, 16-1/2"
27	04043-06	Flatwasher, 5/8-.688 x 1.75 x .134 HD
28	04030-07	Lockwasher, 1/2 Spring
29	04001-121	Bolt, Hex Head 5/8-11 x 1-1/2"
30	461950	Spindle Assembly

	Part No.	Description
31	483304	Debris Shield
32	483303	Bearing
33	43693	Spacer
34	462014	Spindle Housing Assembly (Incl. item #32, 33)
35	43694	Protector, Bearing
36	43695	Shaft, Spindle
37	04001-77	Bolt, Hex Head 3/8-16 x 3-1/2"
38	04003-26	Bolt, Carriage 3/8-16 x 4"
39	481632	Wheel, Anti-Scalp
40	04017-27	Bolt, Hex Head 3/8-16 x 1" Ser. Flg.
41	04021-05	Nut, Center Lock 3/8-16
42	422478	Bracket, Anti-Scalp
43	04001-09	Bolt, Hex Head 5/16-18 x 1"
44	451926	Shaft Weldment
45	482295	Wheel, Anti-Scalp
46	04003-42	Bolt, Carriage 7/16-14 x 2-1/4"
47	483361	Lever, Deck Level
48	04021-11	Nut, Elastic Stop 7/16-14
49	481625-01	Knob w/Stud
50	462031	Discharge Chute Assy. SFZ48
*	462472	CA Discharge Chute
51	482245	Spring, Discharge Chute
52	04001-154	Bolt, Hex Head 5/16-18 x 4-3/4"
53	04021-10	Nut, Elastic Stop 5/16-18
54	424615	Bracket, Belt Guide
55	04019-03	Nut, Serrated Flange 5/16-18
56	04001-12	Bolt, Hex Head 5/16-18 x 1-3/4"
57	04041-38	Flatwasher, 3/8-.406 x 2.25 x .1875
*	425619	Turbo Baffle

* = California Models Only (not shown)

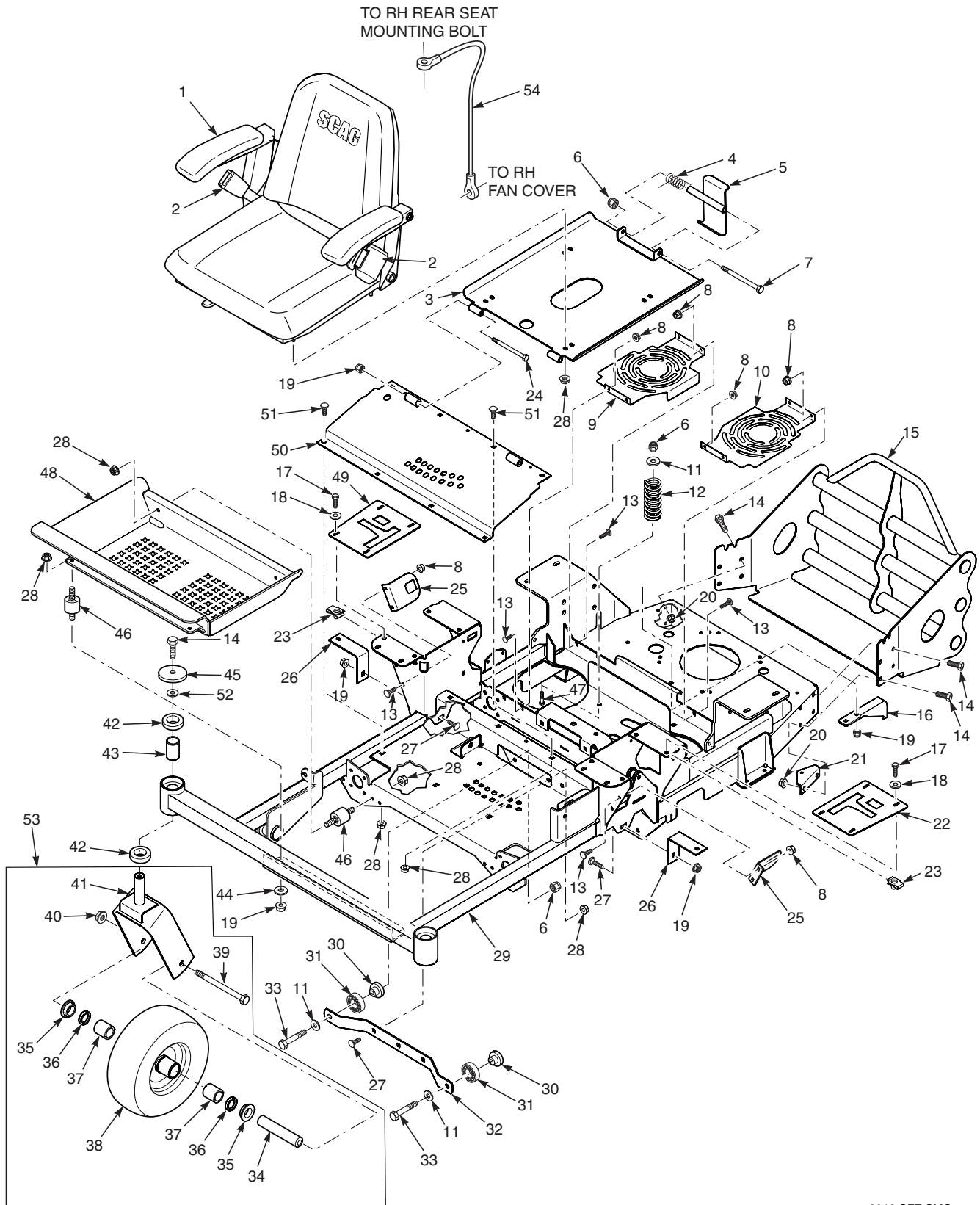
CUTTER DECK CONTROLS - SFZ48



CUTTER DECK CONTROLS - SFZ48

Ref. No.	Part No.	Description
1	483341	Cable, Deck Lift
2	04003-31	Bolt, Carriage 3/8-16 x 3/4"
3	424476	Support, Idler Arm
4	43710	Spacer, Deck Lift Pivot
5	04001-90	Bolt, Hex Head 1/2-13 x 3-3/4"
6	04001-183	Bolt, Hex Head 1/2-13 x 1-3/4"
7	483453-03	Bearing
8	04040-07	Flatwasher, 1/2-.531 x 1.06 x .095
9	461999	Deck Lift Bellcrank Assembly
10	04064-17	Clevis Pin, 5/16 x 3/4"
11	04062-01	Hair Pin, .094 x 1.62"
12	04021-07	Nut, Elastic Stop 1/2-13
13	04021-10	Nut, Elastic Stop 5/16-18
14	04040-13	Flatwasher, 1/2-.562 x 1.375 x .109
15	04021-09	Nut, Center Lock 1/2-13
16	483332	Linkage, Push Arm
17	424489	Bracket, Push Arm Link
18	04019-04	Nut, Serrated Flange 3/8-16
19	04021-09	Nut, Elastic Stop 3/8-16
20	04001-49	Bolt, Hex Head 5/16-18 x 3"
21	04001-52	Bolt, Hex Head 1/2-13 x 2-1/2"
22	483334	Bearing, Deck Lift
23	04001-20	Bolt, Hex Head 3/8-16 x 1-1/2"
24	451868	Weldment, Deck Lift LH
25	04040-14	Flatwasher, 1/4-.312 x .750 x .065
26	04001-09	Bolt, Hex Head 5/16-18 x 1"
27	451867	Weldment, Deck Lift RH
28	482628	Chain, Deck lift
29	483374	Spring, Deck Lift
30	43710	Sleeve, Deck Lift Pivot
31	04001-74	Bolt, Hex Head 1/2-13 x 3"
32	04105-01	Bolt, Head Socket 5/8-11 x 1-1/2"
33	04030-07	Lockwasher, 5/8 Spring
34	424535	Pedal, Foot Bracket
35	424504	Foot Pedal
36	483492	Grip, Deck Latch
37	491254	Weldment, Deck Latch
38	04009-06	Bolt, Shoulder 1/2 x 1/2
39	483453-10	Bearing
40	483328	Linkage Assembly, Deck Lift
41	483367	Linkage Assembly, Deck Lift
42	483498	Pin, Height Adjuster

SHEET METAL COMPONENTS

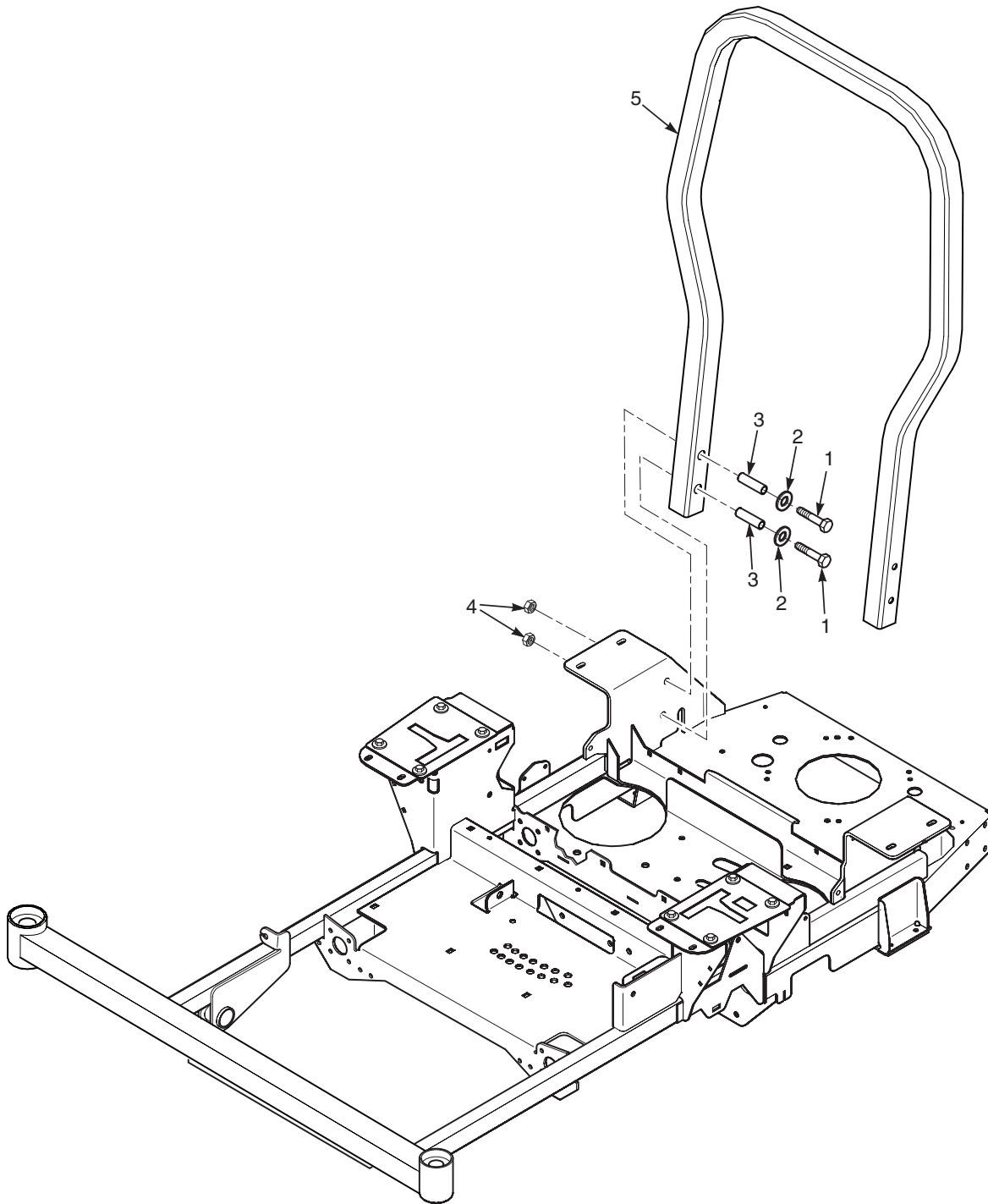


SHEET METAL COMPONENTS

	Part No.	Description
1	485142	Seat Assembly
	485162	Back Cushion
	485163	Bottom Cushion
	483549	Arm Rest Kit
	485161	Seat Pan
	485160	Seat Adjustment Kit
2	485164	Seat Belt Assembly, Retractable
	461990	Hardware Package, Mounting
3	462034	Seat Base w/Decal
4	483371	Spring, Seat Latch
5	451883	Seat Latch
6	04021-09	Nut, Elastic Stop 3/8-16
7	04001-100	Bolt, Hex Head 3/8-16 x 6"
8	04019-02	Nut, Serrated Flange 1/4-20
9	424585	Cover, Fan RH
10	424550	Cover, Fan LH
11	04041-07	Flatwasher, 3/8-.391 x .938 x .105
12	483372	Spring, Seat
13	04003-07	Bolt, Carriage 1/4-20 x 1"
14	04001-19	Bolt, Hex Head 3/8-16 x 1"
15	451929	Rear Bumper
	483535	Plug, Bumper Tube (not shown)
16	424523	Bracket, Anti-Rotation
17	04001-14	Bolt, Hex Head 1/4-20 x 1"
18	04040-14	Flatwasher, 1/4-.312 x .750 x .065
19	04021-10	Nut, Elastic Stop 5/16-18
20	04019-04	Nut, Serrated Flange 3/8-16
21	424639	Bracket, Dump Valve
22	462023	Control Plate LH
23	04110-01	U-Nut 1/4-20
24	04001-73	Bolt, Hex Head 5/16-18 x 3-3/4"
25	424511	Bracket, Switch Mount
26	424516	Bracket, Tank Mount

Ref. No.	Part No.	Description
27	04003-12	Bolt, Carriage 5/16-18 x 3/4"
28	04019-03	Nut, Serrated Flange 5/16-18
29	462310	Main Frame w/Decals
30	43703	Spacer, Bearing
31	483379	Bearing
32	424480	Support, Deck Guide
33	04001-21	Bolt, Hex Head 3/8-16 x 1-3/4"
34	43698	Sleeve, Front Caster Wheel
35	483453-09	Bearing
36	483486	Seal, 1 x 1.375 x .25
37	483453-08	Bearing
38	483409	Caster Wheel Assembly
	483417	Tire, 11 x 4-5.00 2-Ply
	483410	Rim, 5 x 3.25 w/Valve
39	04001-80	Bolt, Hex Head 1/2-13 x 6-1/2"
40	04021-07	Nut, Elastic Stop 1/2-13
41	451845	Yoke, Caster Wheel
42	483466	Bearing
	424636	Spacer, Yoke (not shown)
43	43736	Spacer, Caster Bearing
44	04040-15	Flatwasher, 5/16-.375 x .875 x .083
45	04041-38	Flatwasher, 3/8-.406 x 2.25 x .188
46	483493	Rubber Isolator
47	04003-11	Bolt, Carriage 3/8-16 x 1-1/4"
48	451889	Footplate Weldment
49	462024	Control Plate RH
50	462005	Weldment, Deck Lift Cover
51	04003-14	Bolt, Carriage 5/16-18 x 1/2"
52	04040-11	Flatwasher, 7/16-.50 x 1.250 x .083
53	462015	Caster Wheel Assembly w/Yoke
54	483559	Cable, Seat Stop

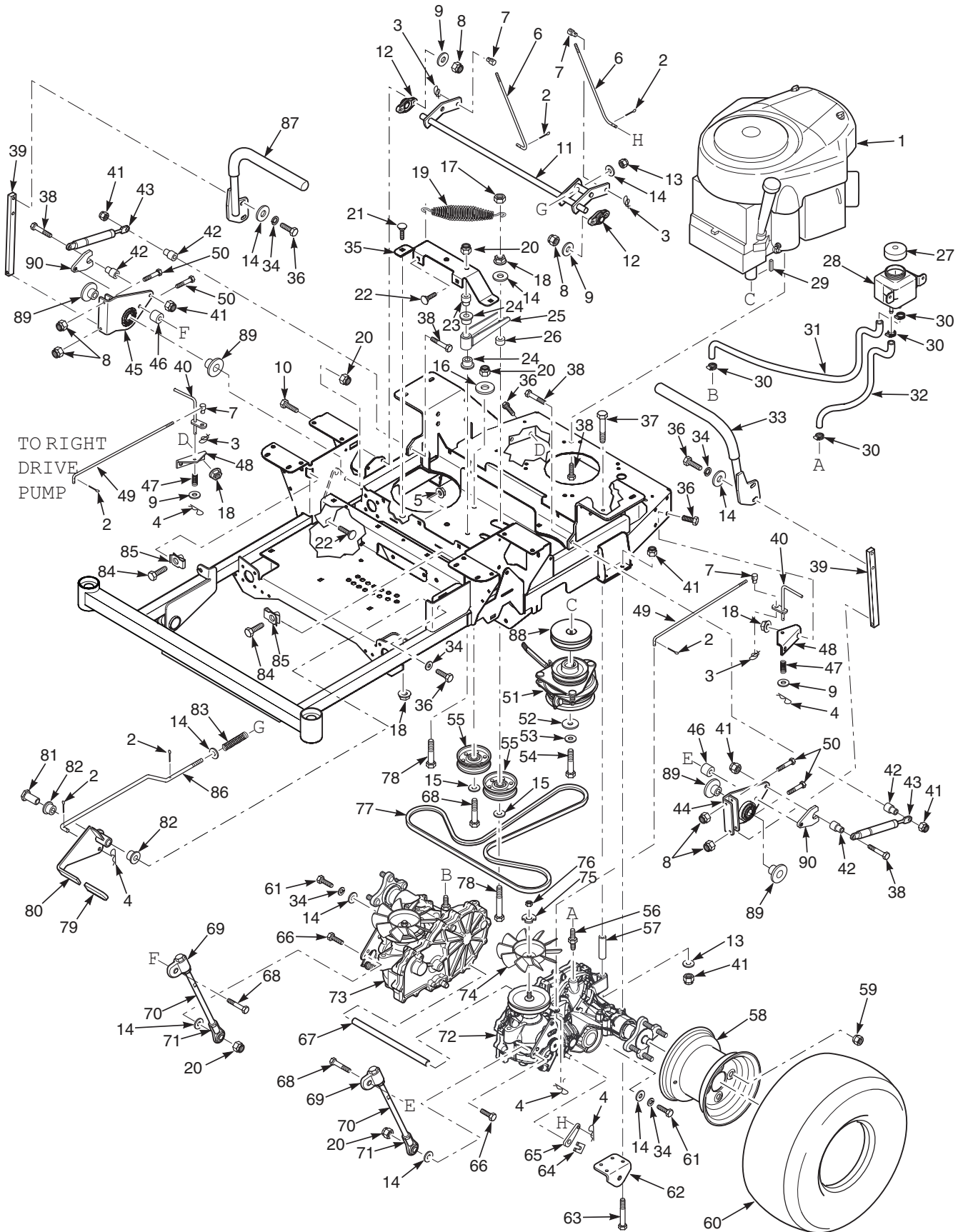
SFZ ROLL-OVER PROTECTION SYSTEM



SFZ ROLL-OVER PROTECTION SYSTEM

Ref. No.	Part No.	Description
1	04001-184	Bolt, Hex Head 1/213 x 3-1/4" Gr. 8
2	04040-07	Flatwasher, 1/2 - .531 x 1.062 x .095
3	43743	Bushing, SFZ ROPS
4	04117-04	Nut, Flanged Elastic Stop, 1/2-13
5	462021	ROPS, SFZ48, SFZ52

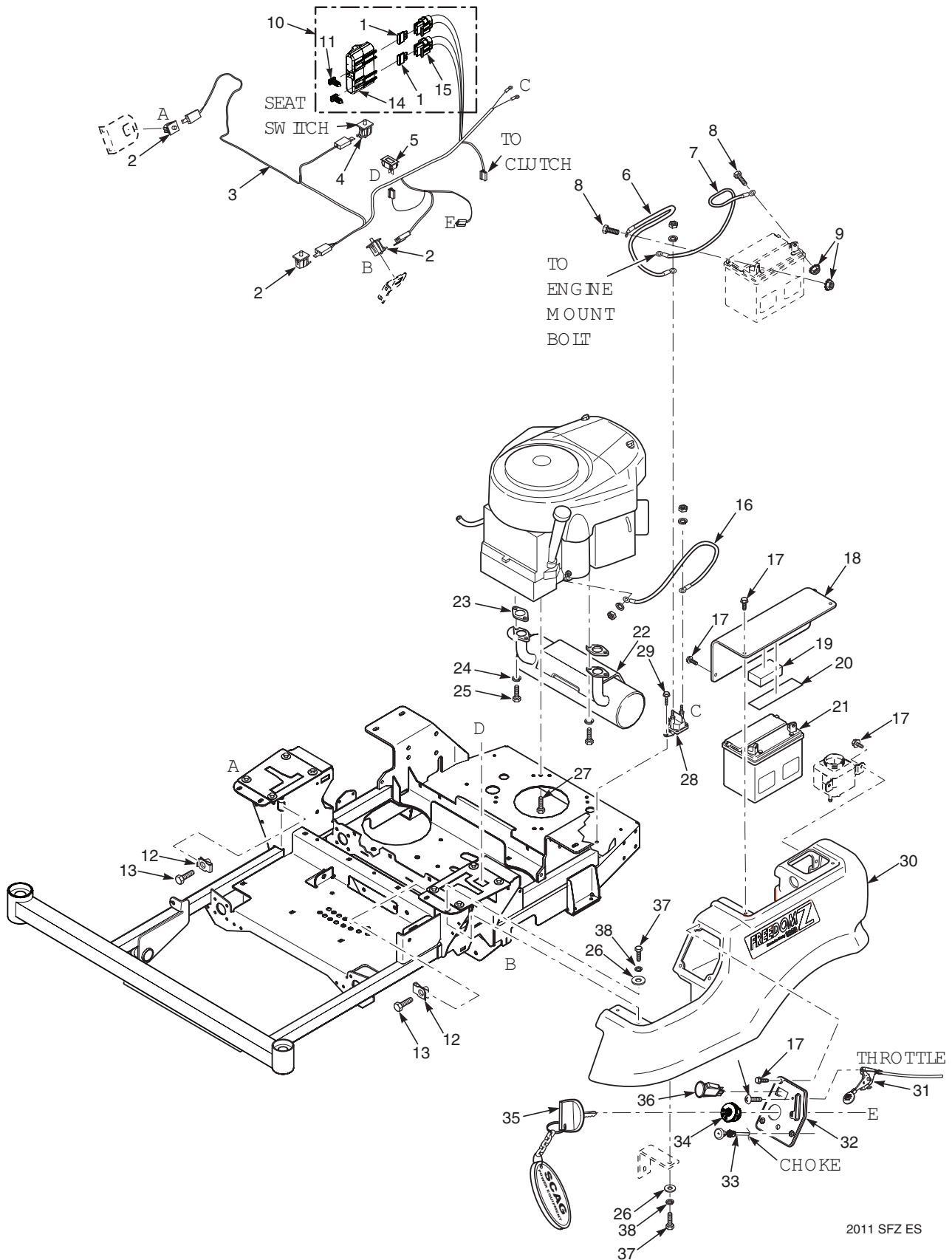
DRIVE SYSTEM COMPONENTS - SFZ48



DRIVE SYSTEM COMPONENTS - SFZ48

Ref. No.	Part No.	Description	Ref. No.	Part No.	Description
1	485024	Engine, Briggs & Stratton Pro-Series	49	44162	Linkage, Dump Valve
	485023	Engine, Kawasaki 18FS (FS600V)	50	04001-04	Bolt, Hex Head 1/4-20 x 1-1/2"
2	04061-01	Cotter Pin, 3/32 x 1"	51	462610	Electric Clutch Assembly
3	04069-01	Pin, Rue Cotter 3/8" Dia.		04063-19	Key, 1/4 x 1/4 x 3/4" (not shown)
4	04062-02	Hair Pin, .080 x 1.19"	52	04041-28	Flatwasher, 7/16-.469 x 1.75 x .25
5	04019-03	Nut, Serrated Flange 5/16-18	53	04030-05	Lockwasher, 7/16" spring
6	44165	Rod, Brake Adjustment	54	04102-03	Bolt, Hex Head 7/16-20 x 2-1/4" Patch
7	43726	Joint, Swivel	55	483638	Pulley, 3-1/2" Dia.
8	04021-08	Nut, Elastic Stop 1/4-20	56	482800-04	Fitting, Transmission
9	04040-14	Flatwasher, 1/4-.312 x .750 x .065	57	43700	Spacer, Axle
10	04017-07	Bolt, Serrated Flange 1/4-20 x 1-1/4"	58	481868	Rim w/Valve Stem
11	451884	Weldment, Brake Lever	59	04028-02	Wheel Nut, 1/2-20
12	483504	Bearing	60	483390	Wheel Assembly
13	04040-15	Flatwasher, 5/16-.375 x .875 x .083		483389	Tire, 20 x 10-8 2-Ply
14	04041-07	Flatwasher, 3/8-.391 x .938 x .105	61	04001-46	Bolt, Hex Head 3/8-16 x 2-1/4"
15	04043-04	Flatwasher, 3/8-.391 x .938 x .105 HD	62	424489	Bracket, Pusharm Link
16	04041-11	Flatwasher, 3/8-.406 x 1.5 x 7 GA.	63	04001-49	Bolt, Hex Head 5/16-18 x 3"
17	04021-05	Nut, Center Lock 3/8-16	64	HG51190	Clip, Brake Lever (order through Hydro-Gear)
18	04019-04	Nut, Serrated Flange 3/8-16	65	HG52639	Lever, Brake (order through Hydro-Gear)
19	483087	Spring, Transmission Idler	66	04001-32	Bolt, Hex Head 3/8-16 x 1-1/4"
20	04021-09	Nut, Elastic Stop 3/8-16	67	43701	Spacer, Axle
21	04003-31	Bolt, Carriage 3/8-16 x 3/4"	68	04001-45	Bolt, Hex Head 3/8-16 x 2"
22	04003-12	Bolt, Carriage 5/16-18 x 3/4"	69	483563	Rod End, Adjustable
23	43715	Shaft Pivot, Idler Arm		04020-25	Nut, Jam 3/8-24 UNF RH
24	483453-04	Bearing	70	483574	Linkage, Pump
25	462122	Transmission Idler Arm Assembly	71	483575	Stake, Rod End Assembly
26	43720	Spacer, Idler Pulley	72	484449	Transaxle Assy., (ZL-KCEF-3LKG-1NXX)
27	483514	Cap	73	484450	Transaxle Assy., (ZL-GCEF-3LKF-1NXX)
28	483438	Reservoir Assembly	74	HG53823	Fan (order through Hydro-Gear)
29	04063-31	Key, 1/4 x 1/4 x 1-3/4"	75	424687	Nut, Control Linkage
30	48136-05	Clamp, 0.87" Max Dia.	76	HG44133	Fan Nut (order through Hydro-Gear)
31	483431	Hose, RH Transmission	77	483314	Belt, Transmission Drive
32	483432	Hose, LH Transmission	78	04001-54	Bolt, Hex Head 3/8-16 x 3"
33	462433	Handle Bar Assembly LH, w/Grip	79	482102	Grip, Brake Handle
	484376	Grip	80	462010	Brake Handle Assembly
34	04030-04	Lockwasher, 3/8" Spring	81	43722	Spacer, Brake Handle
35	424476	Support, Idler Arm	82	483453-05	Bearing
36	04001-19	Bolt, Hex Head 3/8-16 x 1"	83	483538	Spring, Brake
37	04001-95	Bolt, Hex Head 5/16-18 x 5"	84	04107-01	Bolt, Hex Head 3/8-16 x 1-1/4" Special Lock
38	04001-11	Bolt, Hex Head 5/16-18 x 1-1/2"	85	04110-03	U-Nut, 3/8-16
39	424498	Bar, Control Lever	86	44157	Rod, Brake Linkage
40	451912	Dump Valve Lever	87	462434	Handle Bar Assembly RH, w/Grip
41	04021-10	Nut, Elastic Stop 5/16-18		484376	Grip
42	43602	Spacer, Pump Dampener	88	483320	Pulley, 4-1/2" Dia. 1" Bore
43	482794	Dampener	89	43719	Spacer, Linkage
44	462127	Control Link, LH			
45	462128	Control Link, RH			
46	43674	Spacer			
47	482070	Spring			
48	424639	Bracket, Dump Mounting			

EXHAUST AND ELECTRICAL SYSTEM - SFZ48



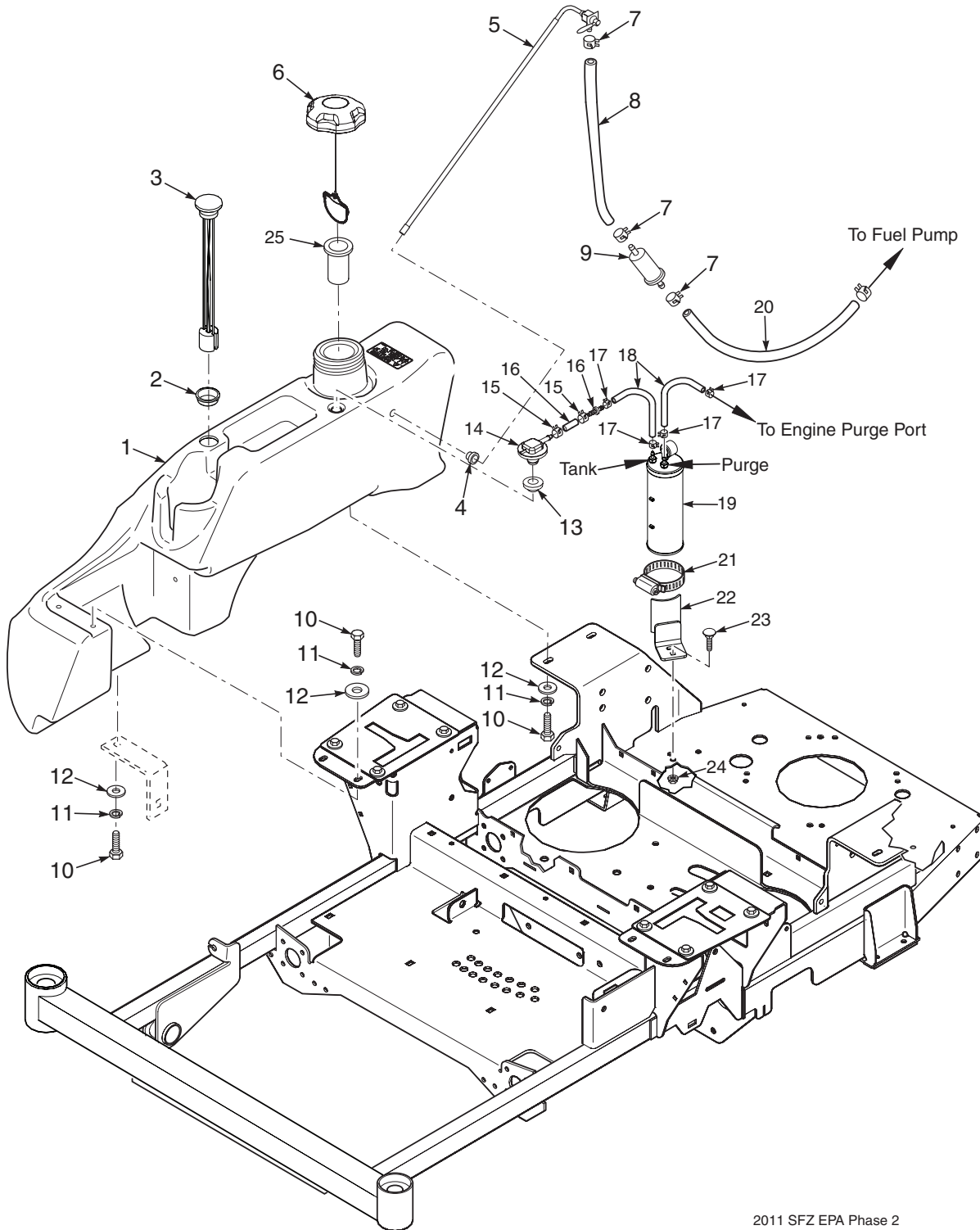
2011 SFZ ES

EXHAUST AND ELECTRICAL SYSTEM - SFZ48

Ref. No.	Part No.	Description	Ref. No.	Part No.	Description
1	48298	Fuse, 20 amp	28	483278	Solenoid
2	483473	Switch	29	04011-14	Bolt, Self Tapping 1/2-20 x 3/4" Shakeproof
3	484433	Wire Harness, Main	30	483364	Tank, LH
	483529	Wire Harness Adapter, Kawasaki (not shown)	31	483434	Throttle Cable
4	483473	Switch, Seat	32	462036	Instrument Panel w/Decal
5	484565	Hourmeter	33	483435	Choke Cable, Briggs & Stratton
6	48029-13	Battery Cable, Red 25"	34	483472	Ignition Switch
7	48029-11	Battery Cable, Black 27"	35	483366	Key, Ignition
8	04001-44	Bolt, Hex Head 1/4-20 x 1/2"		483609	Key w/Shroud
9	04020-02	Nut, 1/4-20		462069	Key Assembly w/Fob
10	483642	Double Fuse Assy. (incl. items 1, 14, 15, 46)	36	483957	PTO Switch
11	482588	Clip, Wire	37	04001-08	Bolt, Hex Head 5/16-18 x 3/4"
12	04110-03	U-Nut, 3/8-16	38	04030-03	Lockwasher, 5/16" Spring
13	04107-03	Bolt, Hex Head 3/8-16 x 1-1/4" Special Lock			
14	483571	Cover, Sealed Double			
15	483629	Fuse Holder			
16	48029-09	Battery Cable, Red 9"			
17	04017-04	Bolt, Hex Head 1/4-20 x 1/2" Serr. Flange			
18	461996	Battery Cover (incl. items 19 & 20)			
19	483452	Pad, Battery Hold Down			
20	483508	Rubber Pad			
21	*483665	Battery (not avail. through Scag)			
22	483381	Muffler, Briggs & Stratton			
	484036	Muffler, Kawasaki FS			
23	**	Exhaust Gasket			
24	**	Lockwasher			
25	**	Bolt			
26	04040-15	Flatwasher, 5/16-.375 x .875 x .083			
27	04001-32	Bolt, Hex Head 3/8-16 x 1-1/4" (Kawasaki)			
	04030-04	Lockwasher, 3/8" Spring (Kawasaki)			
	04001-11	Bolt, Hex Head 5/16-18 x 1-1/2" (Briggs)			
	04019-03	Nut, 5/16-18 Serrated Flange			
	04031-03	Lockwasher, 5/16" Spring (Briggs)			
	04011-07	Capscrew, Hex Head 3/8-16 x 1-1/4" Self Tap (Briggs)			

** Available through individual engine manufacturer.

SFZ48 FUEL SYSTEM



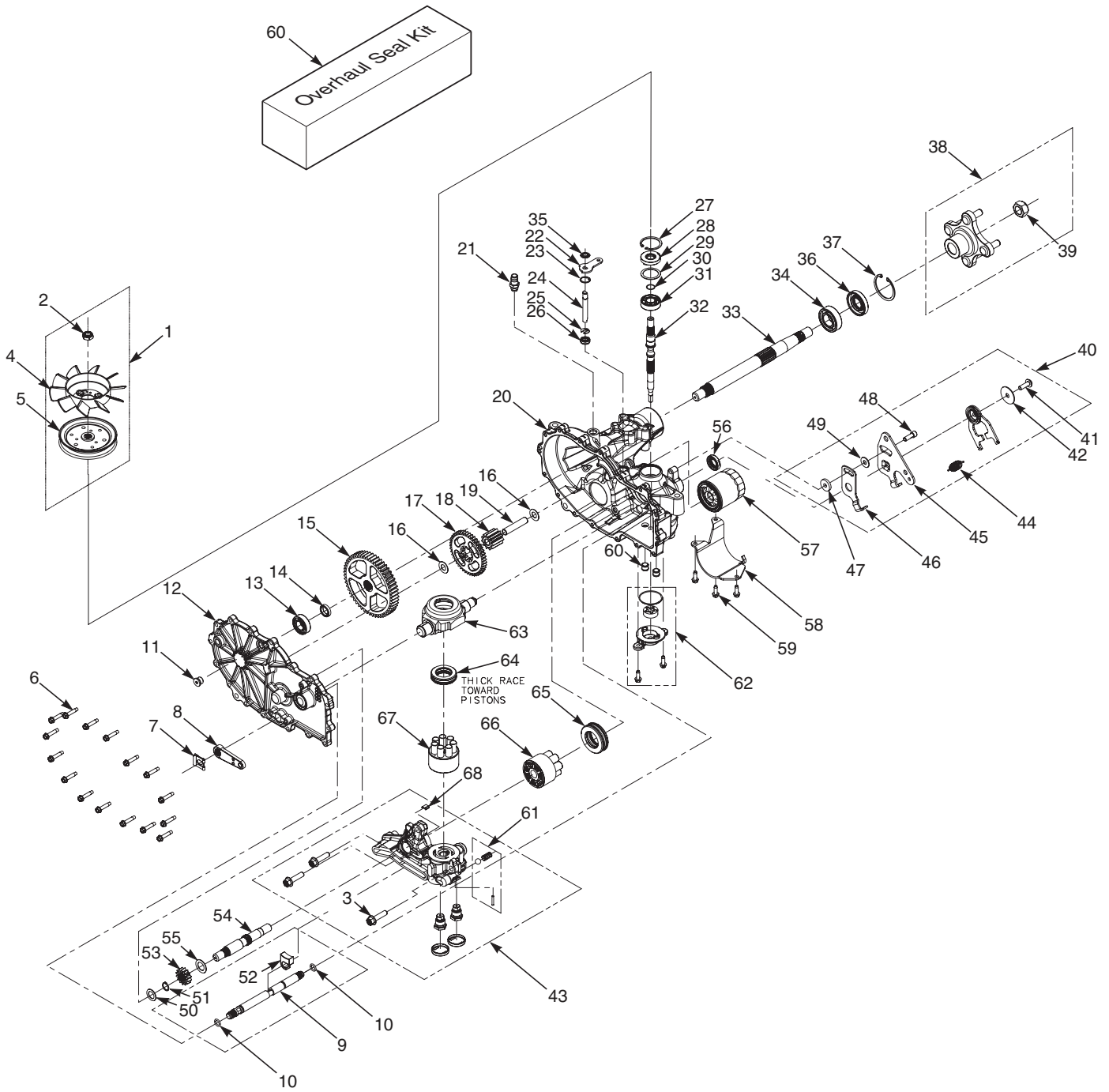
2011 SFZ EPA Phase 2

SFZ48 FUEL SYSTEM

Ref. No.	Part No.	Description
1	462379	Fuel Tank Assembly, SFZ - Low Perm
2	483536	Grommet
3	484243	Fuel Gauge Assembly
4	482571	Bushing, .56 Dia. Viton
5	483555	Fuel Tube Assembly
6	484286	Fuel Cap, Tethered
	484297	Fuel Cap w/Tethered - California Models Only (not shown)
7	48059-01	Clamp, Fuel Hose 1/4"
8	483617	Fuel Hose, 1/4" Non-Perm (order by inch)
9	*	Fuel Filter
10	04001-08	Bolt, Hex Head 5/16-18 x 3/4"
11	04030-03	Lockwasher, 5/16" Spring
12	04040-15	Flatwasher, 5/16-.375 x .875 x .083
13	484285	Grommet, Viton
14	484333	Remote Vent
15	48059-02	Clamp, Fuel Hose 7/32"
16	484347	Hose, 1/4" Vapor Recovery (order by inch)
17	48059-05	Clamp, Vapor Recovery Hose
18	484345	Hose, 3/16" (order by inch)
19	484342	Carbon Canister
20	*	Fuel Hose
21	48136-17	Clamp, Hose
22	452226	Bracket Weldment, SFZ48/52
23	04003-12	Bolt, Carriage 5/16-18 x 3/4"
24	04019-03	Nut, Serrated Flange 5/16-18
25	484279-01	Tube, Fuel Tank Insert
26	484343-01	Mender, 1/4 x 3/16 w/0.02 Hole

* = Available through engine manufacturer only.

ZT-3100 HYDRAULIC AXLE ASSEMBLY



ZT-3100 HYDRAULIC AXLE ASSEMBLY

Ref. No.	Part No.	Description	Ref. No.	Part No.	Description
1	HG72125	Kit, Fan & Pulley	36	HG50772	Seal, Lip 25 x 52 x 10 TC Gray
2	HG51244	Nut, Hex Locking 1/2-20	37	HG50859	Ring, Retaining 2.06 Internal
3	HG52137	Bolt, Hex Head 3/8-16 x 1-1/2" Patch	38	HG71505	Hub Kit
4	HG53823	Fan, 7" Dai. (10 Blade)	39	HG50863	Nut, Hex Locking
5	HG52364	Pulley, Cupped 4-1/2" Dia	40	HG71595	Kit, RTN Assembly (Does not include #44, 46, 47, 48, 49)
	HG52366	Hub, Pulley	41	HG51812	Bolt, 5/16-24 x 1" Patch
6	HG51190	Bolt, Hex Head 1/4-20 x 1-11/4"	42	HG51950	Washer, .343 x 1.5 x .062
7	HG52027	Clip, Retaining	43	HG71565	Kit, Center Section RH
8	HG52639	Handle, Brake		HG71566	Kit, Center Section LH
9	HG52640	Shaft, Brake	44	HG51605	Spring
10	HG51804	O-Ring	45	HG52682	Arm, Control
11	HG9005110-5600	Plug, 9/16-18	46	HG51945	Arm, Neutral RH
				HG51946	Arm, Neutral LH
12	HG71572	Kit, Side Cover RH	47	HG52527	Spacer, .320 x 1.005 x .179
	HG71574	Kit, Side Cover LH	48	HG51616	Bolt, 5/16-24 x 1" Patch
13	HG44121	Bearing, Ball .75 x 40 x 12	49	HG44130	Washer, .34 x .88 x .06
14	HG52161	Spacer, .75 x 1.0 x .257	50	HG44371	Washer, .63 x 1.0 x .05
15	HG52108	Gear, 54T	51	HG44145	Ring, Retaining
16	HG50132	Washer, .5 x 1.0 x .03	52	HG52641	Pawl, Brake
17	HG52110	Gear, 45T	53	HG52341	Gear, 14T
18	HG52586	Gear, 11T	54	HG52150	Shaft, Motor
19	HG51083	Jackshaft Pin	55	HG51069	Washer, .72 x 1.16 x .04
20	HG71413	Kit, Housing RH	56	HG51140	Seal, Lip 18 x 32 x 7
	HG71421	Kit, Housing LH	57	HG52114	Filter
21	482800-03	Fitting	58	HG52257	Filter Guard
22	HG51329	Arm, By-Pass	59	HG50752	Bolt, 1/4-20 x 3/4"
23	HG51627	Ring, Retaining .750 Internal	60	HG71410	Seal Kit
24	HG52136	Rod, By-Pass	61	HG71436	Kit, Charge Relief
25	HG51628	Ring, .Retaining .375 External	62	HG71411	Kit, Charge Pump
26	HG51626	Seal, Lip .375 x .75 x .25	63	HG51048	Trunnion Swashplate
27	HG50329	Ring, Retaining 2.06 Internal	64	HG50551	Thrust Bearing
28	HG51161	Seal, Lip 17 x 40 x 7	65	HG51462	Thrust Bearing
29	HG50951	Washer, 1.23 x 1.56 x .04	66	HG71579	Kit, Motor Cylinder Block
30	HG2000022	Ring, Retaining Wire	67	HG70723	Kit, Cylinder Block
31	HG50315	Bearing, Ball 17 x 40 x 12 Open	68	HG71448	Plate, By-Pass
32	HG52155	Shaft, Input	69	HG71436	Kit, Charge Relief
33	HG71569	Shaft Kit, Axle			
34	HG50771	Bearing, Ball 1.0 x 52 x 15 Open			
35	HG51630	Ring, Retaining .375 External			

REPLACEMENT DECALS AND INFORMATION PLATES

WARNING

INSTALL BELT COVER BEFORE OPERATING MACHINE
 READ OPERATOR'S MANUAL 483402 1

WARNING

DO NOT OPERATE WITHOUT DISCHARGE CHUTE, MULCHING KIT, OR ENTIRE GRASS CATCHER INSTALLED 483405 2

IMPORTANT
 Operation on slopes can be hazardous.
 This machine was originally equipped with a Rollover Protection Device with a Roll Bar and Seat Belt.
 See your dealer if either is missing or damaged. 483425 3


DANGER


SPINNING BLADES
KEEP CLEAR


BLADE CONTACT & THROWN OBJECTS CAN INJURE 4

FORWARD

F
R
REVERSE
 5

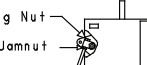
WARNING

 Replace seat only with Scag approved seat with seat mounting provisions and Scag approved seat belts.
 Failure to follow these directions could result in injury or death in the event of a rollover. 483426 6

48
COMMERCIAL GRADE 7

WARNING

ROTATING BLADES AND BELTS
 * Keep hands, feet & clothing clear
 * Keep all guards in place
 * Shut off engine & disengage blade clutch before servicing
 * Use caution in directing discharge
 * Read instruction manual before operating
DO NOT OPERATE UNLESS GRASS CATCHER, MULCHING KIT OR DISCHARGE CHUTE IS INSTALLED 483406 8


IMPORTANT ADJUSTMENT PROCEDURES
 READ OPERATOR'S MANUAL FOR MORE DETAILS
 Check tire pressure - Drive tires-8 psi -
 - Caster tires-25 psi

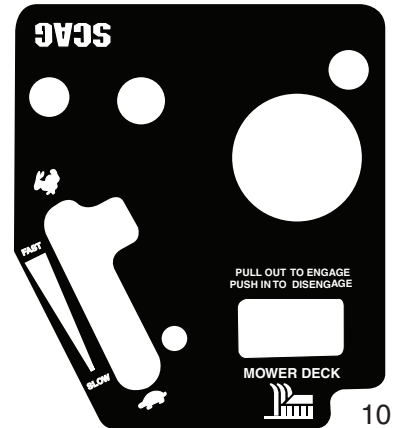
FREE WHEEL OPERATION
 To move machine without running engine, pull both dump valve rods up and back (located at rear of machine) and latch. Pull rods forward and latch into front slot to operate mower.

NEUTRAL ADJUSTMENT
 Adjusting Nut

 Jamnut
 To re-set neutral, loosen jamnut. With operator in seat, control levers in neutral and brake off, turn adjusting bolt until wheel doesn't creep. Tighten jamnut. Repeat for opposite side. If wheels still creep after adjustment, see an authorized Scag dealer.

HYDRAULIC FLUID LEVEL
 Check hydraulic fluid level while fluid is cool. Fluid level should be in sight window. Fill with 20W50 motor oil only.

IMPORTANT
 Do not overfill. Room for hot fluid expansion must be allowed or resulting expansion may cause leaks in the system.

TRACKING ADJUSTMENT

 Control Lever
 Stop Bolt
 If machine pulls to right, adjust LH control stop bolt CW (Inward) to slow left wheel down.
 If machine pulls to left, adjust RH control stop bolt CW (Inward) to slow right wheel down. 483660 9




SCAG FREEDOM Z 11

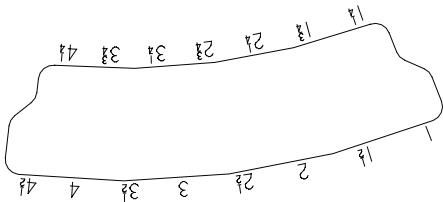
DECK LATCH RELEASE

FREEDOM Z
 Made in the USA by SCAG

MADE IN USA
 QUALITY
 MARYVILLE, MO

START/DRIVE PROCEDURE
 - Engage parking brake
 - Disengage mower deck drive
 - Move control handles to neutral position
 - Start Engine
 - Release parking brake
 - Select forward or reverse with hydro control levers

WARNING

 AVOID SERIOUS INJURY OR DEATH
 Read the Operator's Manual
 Mobile equipment is approved for use only on slopes by an authorized Scag distributor.
 Operate only on slopes you can hold stop blades and back down slowly. If mowing stops go up hill. Avoid sudden turns. Do not mow when children or others are around. Never carry children even with blades off. Look down and behind before mow down and behind before and working. Remove objects that could be thrown by the blades. (Inland operators only) 483467



REPLACEMENT DECALS AND INFORMATION PLATES

Ref. No.	Part No.	Description
1	483402	Decal, Belt Cover
2	483405	Decal, Warning
3	483425	Decal, ROPS
4	483505	Decal, Spinning Blades
5	481568	Decal, Traction Control
6	483633	Decal, Seat Replacement
7	483494	Decal, 48 Commercial
	483495	Decal, 52 Commercial
8	483406	Decal, Knives
9	483660	Decal, Adjustment SFZ
10	483499	Decal, Instrument Panel - SFZ48 & SFZ 52
11	483501	Decal, Front SFZ
12	483467	Decal, Cutting Height
*	483900	Decal, Warning Spark Arrestor (California only)
*	462155	Spanish Decal Kit - SFZ (not shown)
*	01411	DVD Video, Tips for Safe Operation of Your Scag Zero-Turn Mower (not shown)

ELECTRICAL SCHEMATIC

