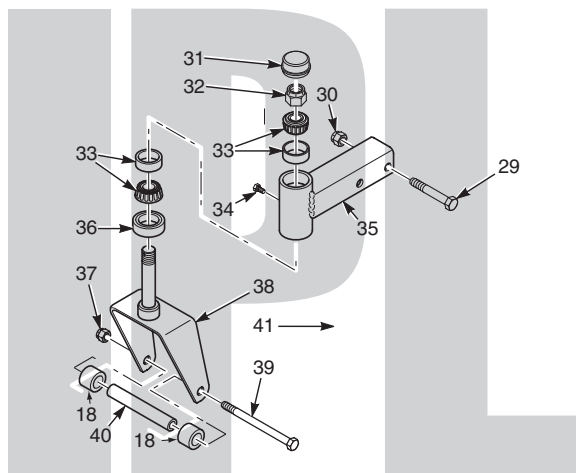


SCAG[®]

POWER EQUIPMENT



ILLUSTRATED PARTS MANUAL



Model SFZ Freedom Z

THIS MANUAL CONTAINS THE ILLUSTRATED PARTS LIST FOR MODELS:

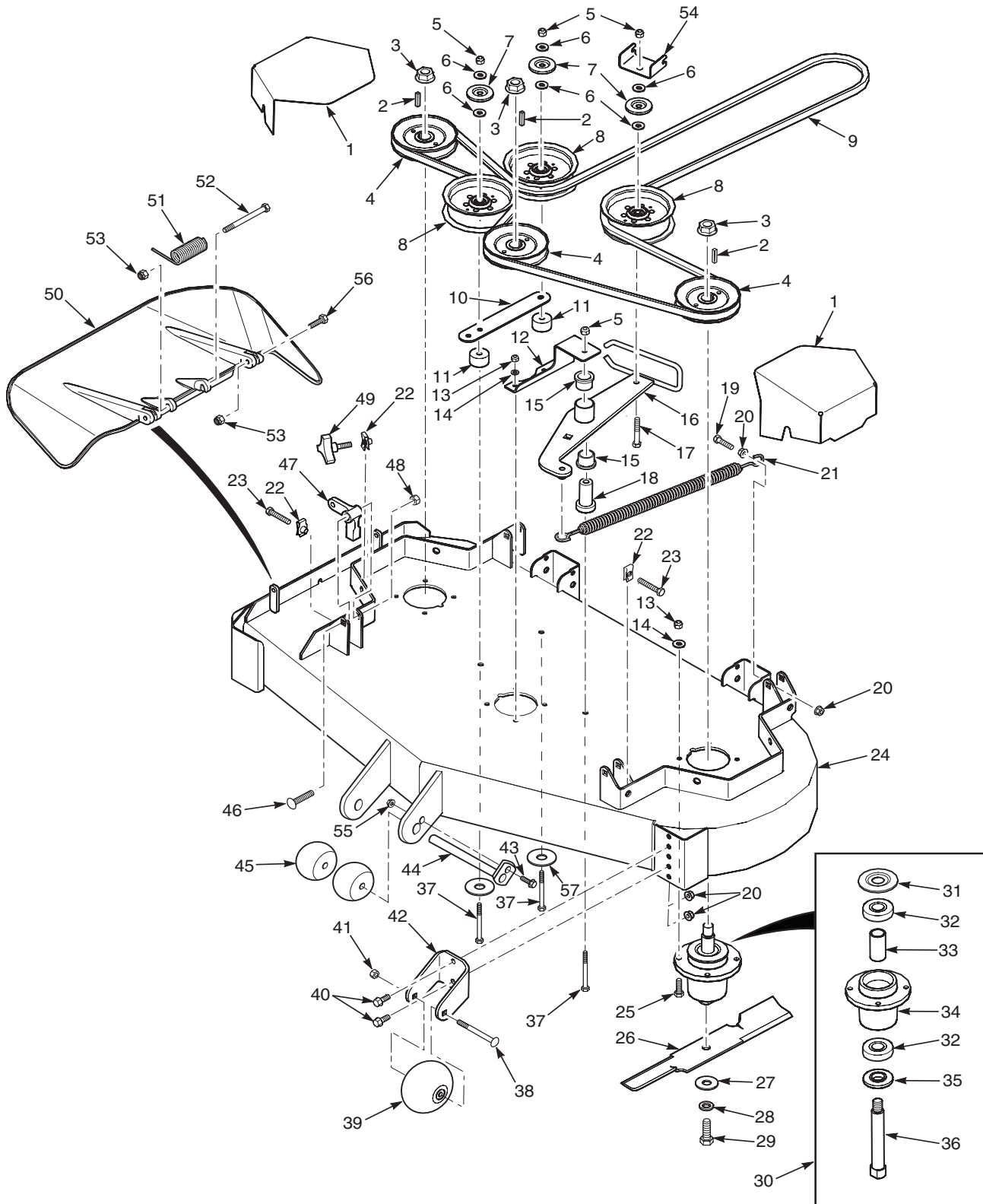
**SFZ48-600FS
SFZ48-26BS
SFZ52-600FS
SFZ52-26BS**

**with a serial number of G1900400 to G1999999
with a serial number of G2000400 to G2099999
with a serial number of G2100250 to G2199999
with a serial number of G2200300 to G2299999**

Table of Contents

48 & 52 CUTTER DECKS	2
CUTTER DECK CONTROLS - SFZ48 & SFZ52.....	4
SHEET METAL COMPONENTS	6
SFZ ROLL-OVER PROTECTION SYSTEM	8
DRIVE SYSTEM COMPONENTS - SFZ48 & SFZ52	10
EXHAUST AND ELECTRICAL SYSTEM - SFZ48 & SFZ52	12
SFZ48 & SFZ52 FUEL SYSTEM.....	14
ZT-3100 HYDRAULIC AXLE ASSEMBLY.....	16
REPLACEMENT DECALS AND INFORMATION PLATES	18
ELECTRICAL SCHEMATIC	20

48 & 52 CUTTER DECKS

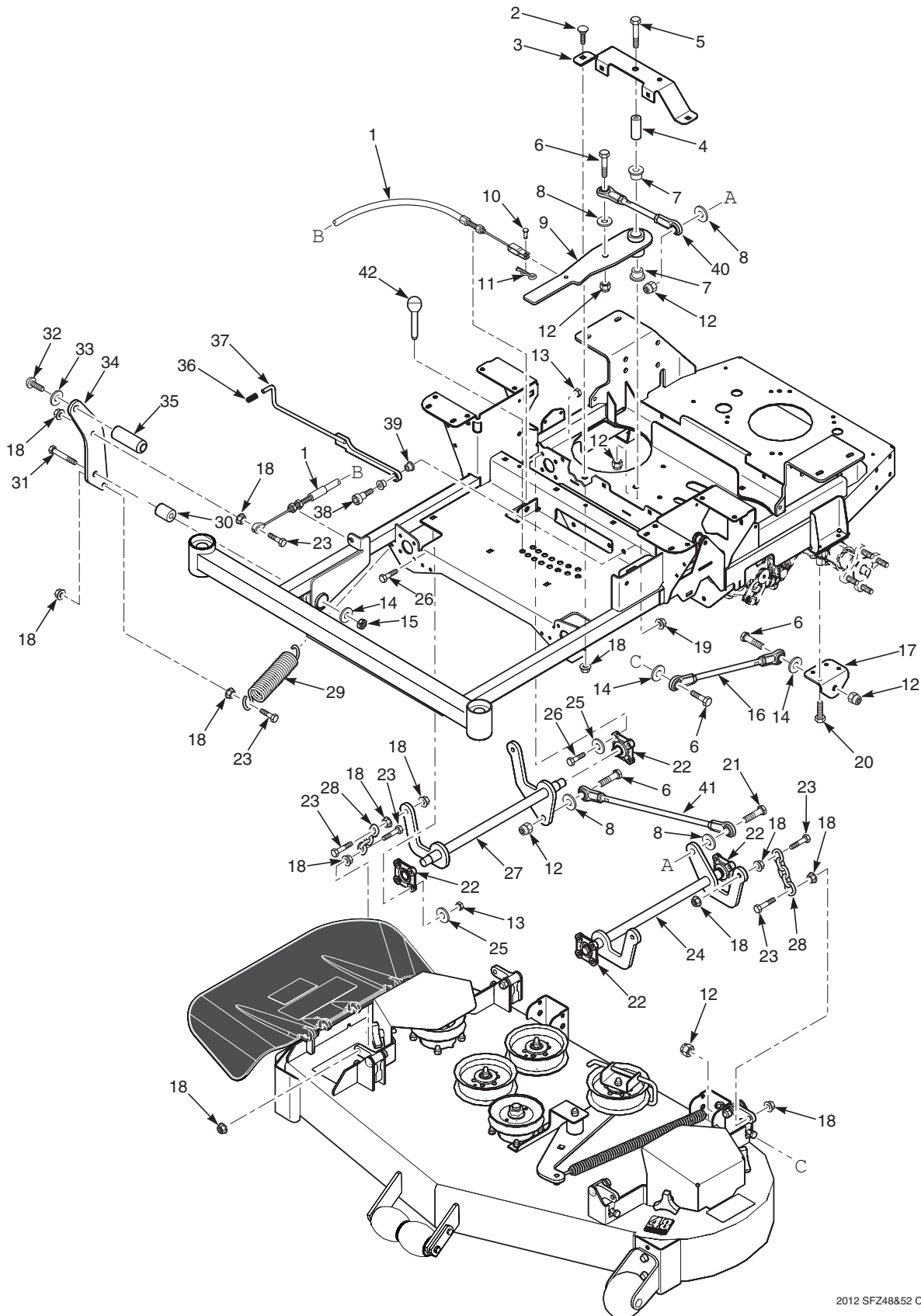


48 & 52 CUTTER DECKS

	Part No.	Description	48	52
1	424528	Belt Cover	x	x
	425260	Belt Cover		
2	04063-01	Key, 1/4 x 1/4 x 1-1/4"	x	x
3	04112-06	Nut, 3/4-16 Spiral Lock	x	x
4	483323	Pulley, 5.13" OD - 25mm Bore	x	
	483324	Pulley, 5.73" OD - 25mm Bore		x
	484026	Pulley, 6.32" OD - 25mm Bore		
5	04021-09	Nut, Elastic Stop 3/8-16	x	x
6	04043-04	Flatwasher, 3/8-.391 x .938 x .105	x	x
7	424367	Dust Shield	x	x
8	483422	Pulley, 5" Idler	x	x
9	483325	Belt, Cutter Deck	x	
	483326	Belt, Cutter Deck		x
	484031	Belt, Cutter Deck		
10	424479	Brace, Pulley	x	x
11	43711	Spacer	x	x
12	424548	Support, Idler Pivot	x	
	424547	Support, Idler Pivot		x
	425264	Support, Idler Pivot		
13	04021-22	Nut, Elastic Stop	x	x
14	04030-03	Lockwasher, 5/16 Spring	x	x
15	483453-03	Bearing	x	x
16	462037	Idler Arm (incl. item #15)	x	x
17	04001-31	Bolt, Hex Head 3/8-16 x 2-1/2"	x	x
18	43708	Pivot, Idler	x	x
19	04001-136	Bolt, Hex Head 3/8-16 x 1-1/2 Gr.8	x	x
20	04019-04	Nut, Serrated Flange 3/8-16	x	x
21	483375	Spring, Idler	x	x
22	04110-03	U-Nut, 3/8-16	x	x
23	04107-04	Bolt, Hex Head 3/8-16 x 2"		
		Special Lock	x	x
24	462039	Cutter Deck w/Decals, SFZ48	x	
	462040	Cutter Deck w/Decals, SFZ52		x
25	4001-11	Bolt, Hex Head 5/16-18 x 1-1/2"		
26	482877	Cutter Blade, 16-1/2"	x	
	482878	Cutter Blade, 18"		x
		"		

	Part No.	Description	48	52
27	04043-06	Flatwasher, 5/8-.688 x 1.75 x .134 HD	x	x
28	04030-07	Lockwasher, 1/2 Spring	x	x
29	04001-121	Bolt, Hex Head 5/8-11 x 1-1/2"	x	x
30	461950	Spindle Assembly	x	x
31	483304	Debris Shield	x	x
32	483303	Bearing	x	x
33	43693	Spacer	x	x
34	462014	Spindle Housing Assembly (Incl. item #32, 33)	x	x
35	43694	Protector, Bearing	x	x
36	43695	Shaft, Spindle	x	x
37	04001-77	Bolt, Hex Head 3/8-16 x 3-1/2"	x	x
38	04003-26	Bolt, Carriage 3/8-16 x 4"	x	x
39	481632	Wheel, Anti-Scalp	x	x
40	04017-27	Bolt, Hex Head 3/8-16 x 1" Ser. Flg.	x	x
41	04021-05	Nut, Center Lock 3/8-16	x	x
42	422478	Bracket, Anti-Scalp	x	x
43	04001-09	Bolt, Hex Head 5/16-18 x 1"	x	x
44	451926	Shaft Weldment	x	x
45	482295	Wheel, Anti-Scalp	x	x
46	04003-42	Bolt, Carriage 7/16-14 x 2-1/4"	x	x
47	483361	Lever, Deck Level	x	x
48	04021-11	Nut, Elastic Stop 7/16-14	x	x
49	481625-01	Knob w/Stud	x	x
50	462031	Discharge Chute Assy. SFZ48	x	
	462032	Discharge Chute Assy. SFZ52		x
51	482245	Spring, Discharge Chute	x	x
52	04001-154	Bolt, Hex Head 5/16-18 x 4-3/4"	x	x
53	04021-10	Nut, Elastic Stop 5/16-18	x	x
54	424615	Bracket, Belt Guide	x	x
55	04019-03	Nut, Serrated Flange 5/16-18	x	x
56	04001-12	Bolt, Hex Head 5/16-18 x 1-3/4"	x	x
57	04041-38	Flatwasher, 3/8-.406 x 2.25 x .1875	x	x

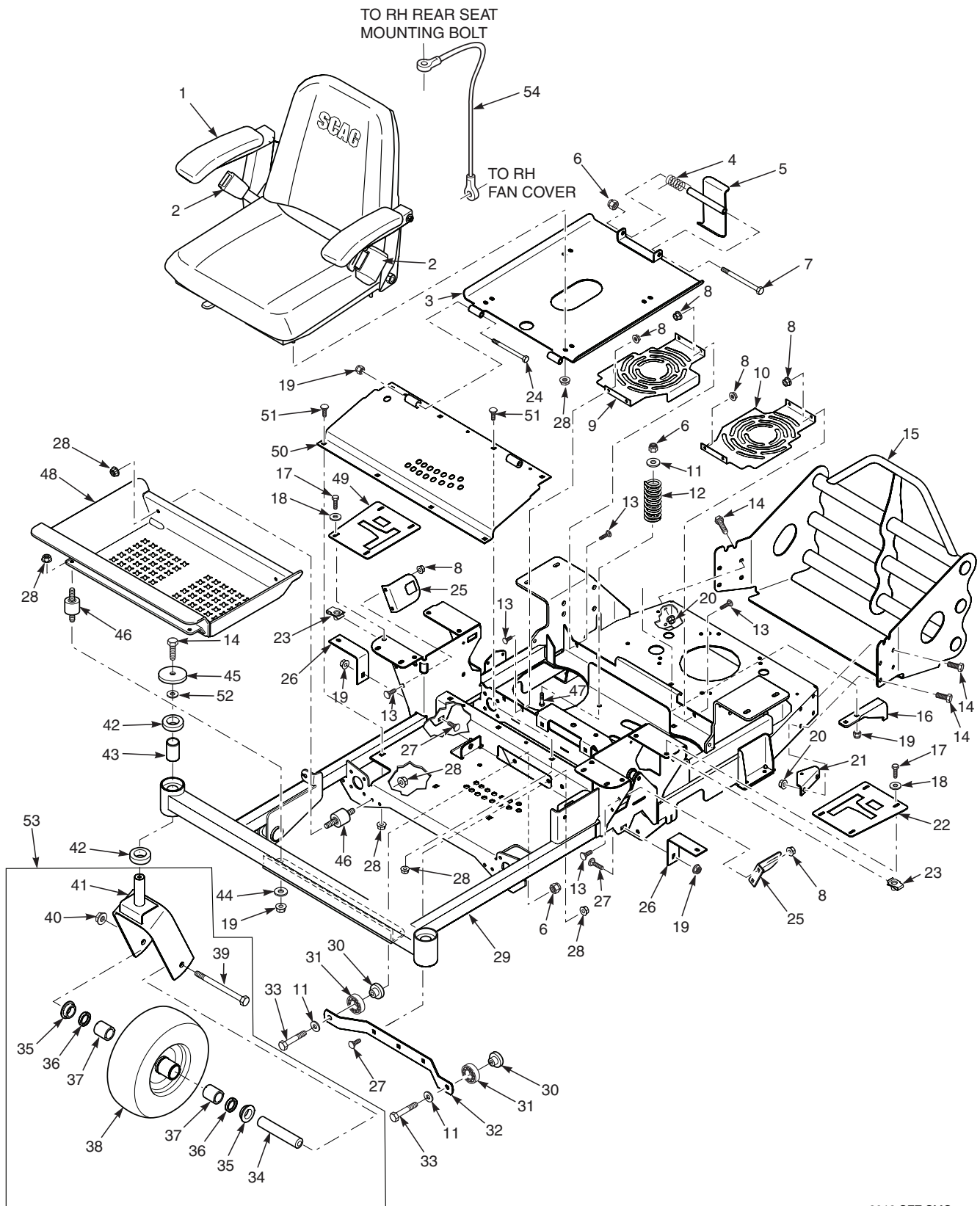
CUTTER DECK CONTROLS - SFZ48 & SFZ52



CUTTER DECK CONTROLS - SFZ48 & SFZ52

Ref. No.	Part No.	Description
1	483341	Cable, Deck Lift
2	04003-31	Bolt, Carriage 3/8-16 x 3/4"
3	424476	Support, Idler Arm
4	43710	Spacer, Deck Lift Pivot
5	04001-90	Bolt, Hex Head 1/2-13 x 3-3/4"
6	04001-183	Bolt, Hex Head 1/2-13 x 1-3/4"
7	483453-03	Bearing
8	04040-07	Flatwasher, 1/2-.531 x 1.06 x .095
9	461999	Deck Lift Bellcrank Assembly
10	04064-17	Clevis Pin, 5/16 x 3/4"
11	04062-01	Hair Pin, .094 x 1.62"
12	04021-07	Nut, Elastic Stop 1/2-13
13	04021-10	Nut, Elastic Stop 5/16-18
14	04040-13	Flatwasher, 1/2-.562 x 1.375 x .109
15	04021-09	Nut, Center Lock 1/2-13
16	483332	Linkage, Push Arm
17	424489	Bracket, Push Arm Link
18	04019-04	Nut, Serrated Flange 3/8-16
19	04021-09	Nut, Elastic Stop 3/8-16
20	04001-49	Bolt, Hex Head 5/16-18 x 3"
21	04001-52	Bolt, Hex Head 1/2-13 x 2-1/2"
22	483334	Bearing, Deck Lift
23	04001-20	Bolt, Hex Head 3/8-16 x 1-1/2"
24	451868	Weldment, Deck Lift LH
25	04040-14	Flatwasher, 1/4-.312 x .750 x .065
26	04001-09	Bolt, Hex Head 5/16-18 x 1"
27	451867	Weldment, Deck Lift RH
28	482628	Chain, Deck lift
29	483374	Spring, Deck Lift
30	43710	Sleeve, Deck Lift Pivot
31	04001-74	Bolt, Hex Head 1/2-13 x 3"
32	04105-01	Bolt, Head Socket 5/8-11 x 1-1/2"
33	04030-07	Lockwasher, 5/8 Spring
34	424535	Pedal, Foot Bracket
35	424504	Foot Pedal
36	483492	Grip, Deck Latch
37	491254	Weldment, Deck Latch
38	04009-06	Bolt, Shoulder 1/2 x 1/2
39	483453-10	Bearing
40	483328	Linkage Assembly, Deck Lift
41	483367	Linkage Assembly, Deck Lift
42	483498	Pin, Height Adjuster

SHEET METAL COMPONENTS

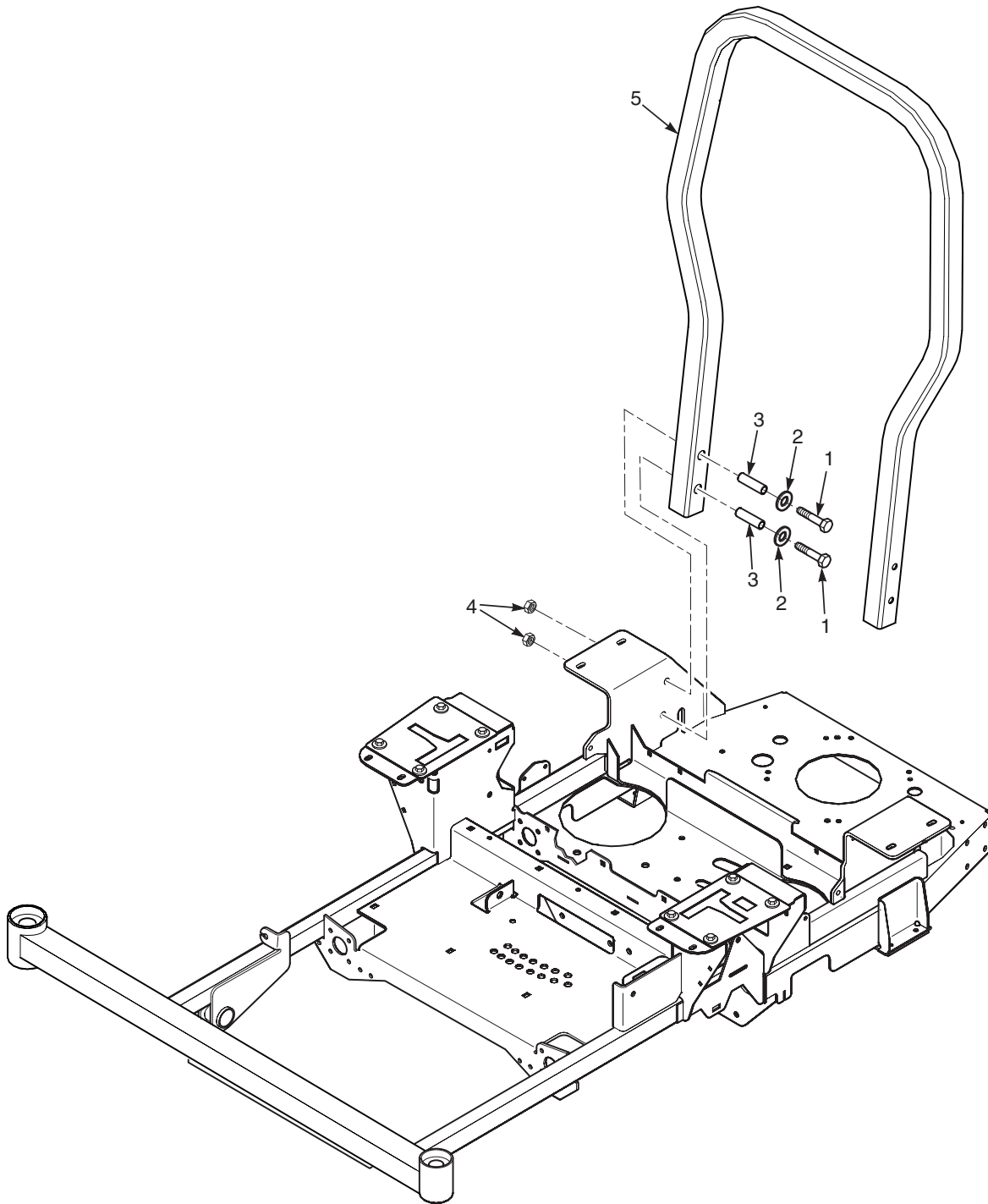


SHEET METAL COMPONENTS

	Part No.	Description	48	52
1	483408	Seat Assembly	x	x
	483544	Back Cushion	x	x
	483545	Bottom Cushion	x	x
	483549	Arm Rest Kit	x	x
	483543	Seat Adjustment Kit	x	x
2	483412	Seat Belt Assembly, Retractable	x	x
	461990	Hardware Package, Mounting	x	x
3	462034	Seat Base w/Decal	x	x
4	483371	Spring, Seat Latch	x	x
5	451883	Seat Latch	x	x
6	04021-09	Nut, Elastic Stop 3/8-16	x	x
7	04001-100	Bolt, Hex Head 3/8-16 x 6"	x	x
8	04019-02	Nut, Serrated Flange 1/4-20	x	x
9	424585	Cover, Fan RH	x	x
10	424550	Cover, Fan LH	x	x
11	04041-07	Flatwasher, 3/8-.391 x .938 x .105	x	x
12	483372	Spring, Seat	x	x
13	04003-07	Bolt, Carriage 1/4-20 x 1"	x	x
14	04001-19	Bolt, Hex Head 3/8-16 x 1"	x	x
15	451929	Rear Bumper	x	x
	483535	Plug, Bumper Tube (not shown)	x	x
16	424523	Bracket, Anti-Rotation	x	x
17	04001-14	Bolt, Hex Head 1/4-20 x 1"	x	x
18	04040-14	Flatwasher, 1/4-.312 x .750 x .065	x	x
19	04021-10	Nut, Elastic Stop 5/16-18	x	x
20	04019-04	Nut, Serrated Flange 3/8-16	x	x
21	424639	Bracket, Dump Valve	x	x
22	462023	Control Plate LH	x	x
23	04110-01	U-Nut 1/4-20	x	x
24	04001-73	Bolt, Hex Head 5/16-18 x 3-3/4"	x	x
25	424511	Bracket, Switch Mount	x	x
26	424516	Bracket, Tank Mount	x	x

Ref. No.	Part No.	Description	48	52
27	04003-12	Bolt, Carriage 5/16-18 x 3/4"	x	x
28	04019-03	Nut, Serrated Flange 5/16-18	x	x
29	462310	Main Frame w/Decals	x	x
30	43703	Spacer, Bearing	x	x
31	483379	Bearing	x	x
32	424480	Support, Deck Guide	x	x
33	04001-21	Bolt, Hex Head 3/8-16 x 1-3/4"	x	x
34	43698	Sleeve, Front Caster Wheel	x	x
35	483453-09	Bearing	x	x
36	483486	Seal, 1 x 1.375 x .25	x	x
37	483453-08	Bearing	x	x
38	483409	Caster Wheel Assembly	x	x
	483417	Tire, 11 x 4-5.00 2-Ply	x	x
	483410	Rim, 5 x 3.25 w/Valve	x	x
39	04001-80	Bolt, Hex Head 1/2-13 x 6-1/2"	x	x
40	04021-07	Nut, Elastic Stop 1/2-13	x	x
41	451845	Yoke, Caster Wheel	x	x
42	483466	Bearing	x	x
	424636	Spacer, Yoke (not shown)	x	x
43	43736	Spacer, Caster Bearing	x	x
44	04040-15	Flatwasher, 5/16-.375 x .875 x .083	x	x
45	04041-38	Flatwasher, 3/8-.406 x 2.25 x .188	x	x
46	483493	Rubber Isolator	x	x
47	04003-11	Bolt, Carriage 3/8-16 x 1-1/4"	x	x
48	451889	Footplate Weldment	x	x
49	462024	Control Plate RH	x	x
50	462005	Weldment, Deck Lift Cover	x	x
51	04003-14	Bolt, Carriage 5/16-18 x 1/2"	x	x
52	04040-11	Flatwasher, 7/16-.50 x 1.250 x .083	x	x
53	462015	Caster Wheel Assembly w/Yoke	x	x
54	483559	Cable, Seat Stop	x	x

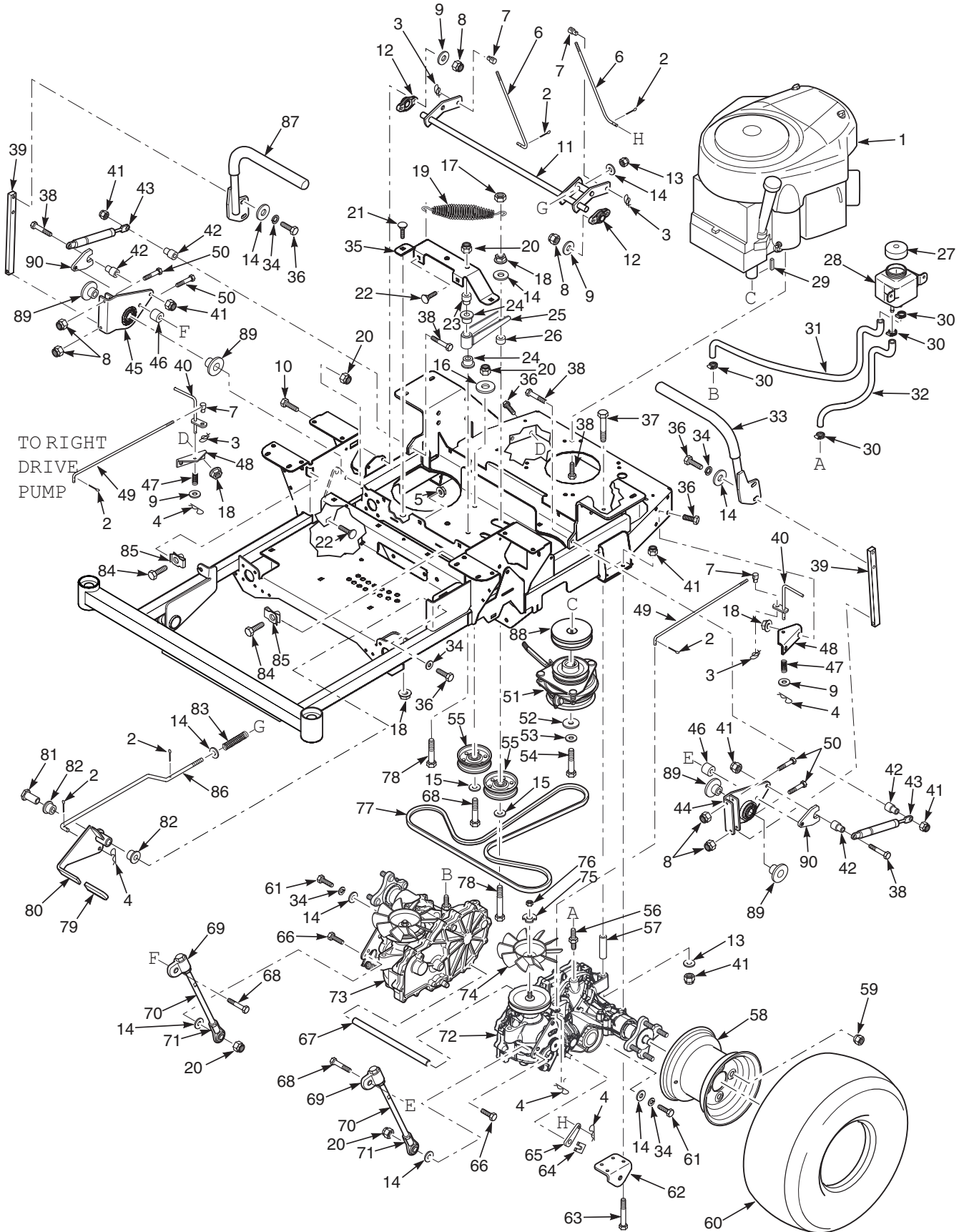
SFZ ROLL-OVER PROTECTION SYSTEM



SFZ ROLL-OVER PROTECTION SYSTEM

Ref. No.	Part No.	Description
1	04001-184	Bolt, Hex Head 1/213 x 3-1/4" Gr. 8
2	04040-13	Flatwasher, 1/2 - .562 x 1.375 x .109
3	43743	Bushing, SFZ ROPS
4	04117-04	Nut, Flanged Elastic Stop, 1/2-13
5	462021	ROPS, SFZ48, SFZ52

DRIVE SYSTEM COMPONENTS - SFZ48 & SFZ52

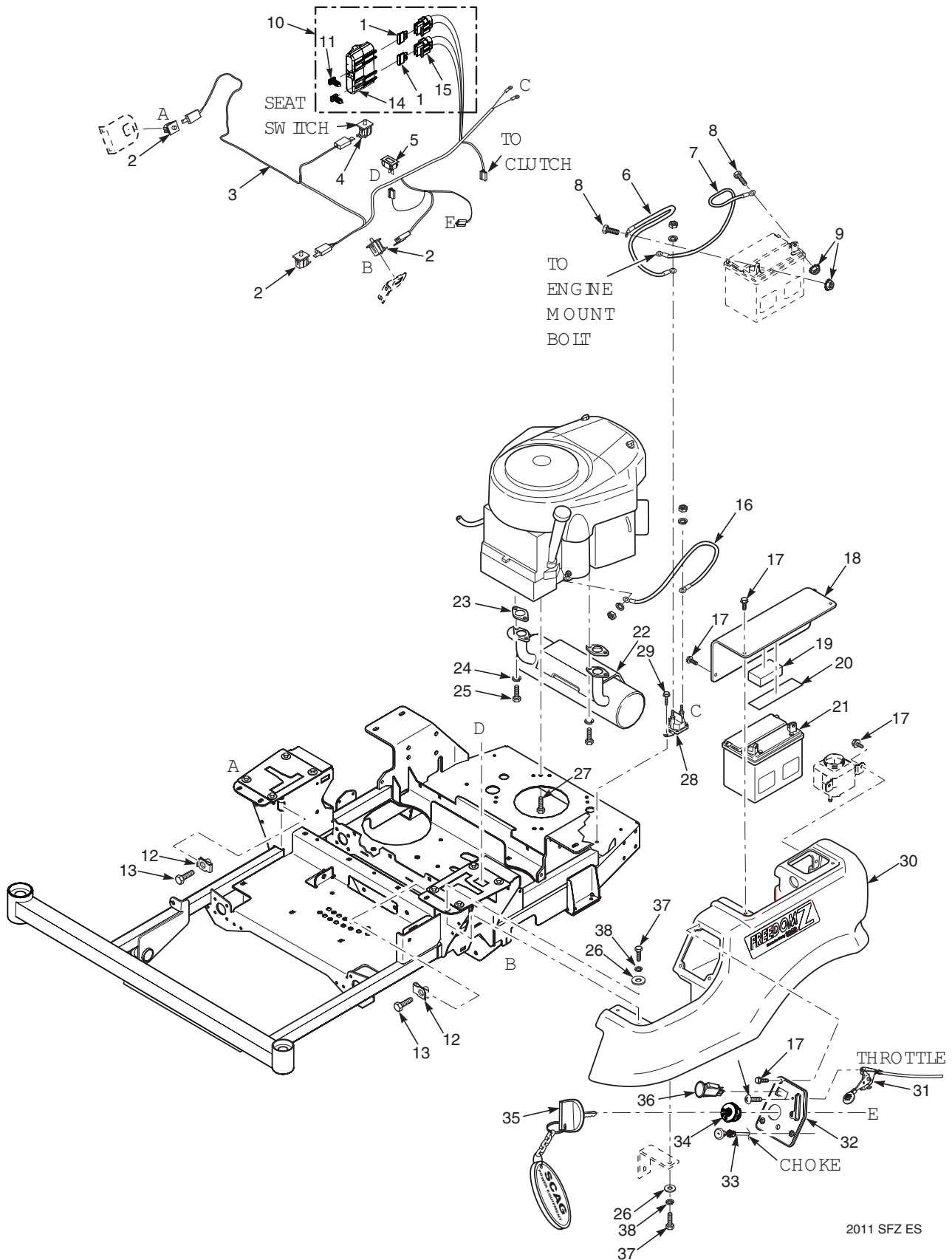


DRIVE SYSTEM COMPONENTS - SFZ48 & SFZ52

Ref. No.	Part No.	Description
1	484223 484418	Engine, Briggs & Stratton Pro-Series Engine, Kawasaki FS600V
2	04061-01	Cotter Pin, 3/32 x 1"
3	04069-01	Pin, Rue Cotter 3/8" Dia.
4	04062-02	Hair Pin, .080 x 1.19"
5	04019-03	Nut, Serrated Flange 5/16-18
6	44165	Rod, Brake Adjustment
7	43726	Joint, Swivel
8	04021-08	Nut, Elastic Stop 1/4-20
9	04040-14	Flatwasher, 1/4-.312 x .750 x .065
10	04017-07	Bolt, Serrated Flange 1/4-20 x 1-1/4"
11	451884	Weldment, Brake Lever
12	483504	Bearing
13	04040-15	Flatwasher, 5/16-.375 x .875 x .083
14	04041-07	Flatwasher, 3/8-.391 x .938 x .105
15	04043-04	Flatwasher, 3/8-.391 x .938 x .105 HD
16	04041-11	Flatwasher, 3/8-.406 x 1.5 x 7 GA.
17	04021-05	Nut, Center Lock 3/8-16
18	04019-04	Nut, Serrated Flange 3/8-16
19	483087	Spring, Transmission Idler
20	04021-09	Nut, Elastic Stop 3/8-16
21	04003-31	Bolt, Carriage 3/8-16 x 3/4"
22	04003-12	Bolt, Carriage 5/16-18 x 3/4"
23	43715	Shaft Pivot, Idler Arm
24	483453-04	Bearing
25	462122	Transmission Idler Arm Assembly
26	43720	Spacer, Idler Pulley
27	483514	Cap
28	483438	Reservoir Assembly
29	04063-31	Key, 1/4 x 1/4 x 1-3/4"
30	48136-05	Clamp, 0.87" Max Dia.
31	483431	Hose, RH Transmission
32	483432	Hose, LH Transmission
33	462433 484376	Handle Bar Assembly LH, w/Grip Grip
34	04030-04	Lockwasher, 3/8" Spring
35	424476	Support, Idler Arm
36	04001-19	Bolt, Hex Head 3/8-16 x 1"
37	04001-95	Bolt, Hex Head 5/16-18 x 5"
38	04001-11	Bolt, Hex Head 5/16-18 x 1-1/2"
39	424498	Bar, Control Lever
40	451912	Dump Valve Lever
41	04021-10	Nut, Elastic Stop 5/16-18
42	43602	Spacer, Pump Dampener
43	482794	Dampener
44	462127	Control Link, LH
45	462128	Control Link, RH
46	43674	Spacer
47	482070	Spring
48	424639	Bracket, Dump Mounting

Ref. No.	Part No.	Description
49	44162	Linkage, Dump Valve
50	04001-04	Bolt, Hex Head 1/4-20 x 1-1/2"
51	462012	Electric Clutch Assembly (48, 52)
52	04041-28	Flatwasher, 7/16-.469 x 1.75 x .25 (48, 52)
53	04030-05	Lockwasher, 7/16" Spring
54	04102-03	Bolt, Hex Head 7/16-20 x 2-1/4" Patch
55	483638	Pulley, 3-1/2" Dia.
56	482800-04	Fitting, Transmission
57	43700	Spacer, Axle
58	481868	Rim w/Valve Stem (48, 52)
59	04028-02	Wheel Nut, 1/2-20
60	483390 483389	Wheel Assembly (48, 52) Tire, 20 x 10-8 2-Ply (48, 52)
61	04001-46	Bolt, Hex Head 3/8-16 x 2-1/4"
62	424489	Bracket, Pusharm Link
63	04001-49	Bolt, Hex Head 5/16-18 x 3"
64	HG51190	Clip, Brake Lever (order through Hydro-Gear)
65	HG52639	Lever, Brake (order through Hydro-Gear)
66	04001-32	Bolt, Hex Head 3/8-16 x 1-1/4"
67	43701	Spacer, Axle
68	04001-45	Bolt, Hex Head 3/8-16 x 2"
69	483563	Rod End, Adjustable
70	04020-25	Nut, Jam 3/8-24 UNF RH
71	483574	Linkage, Pump
72	483575	Stake, Rod End Assembly
73	484449	Transaxle Assy., (ZL-KCEF-3LKG-1NXX)
74	484450	Transaxle Assy., (ZL-GCEF-3LKF-1NXX)
75	HG53823	Fan (order through Hydro-Gear)
76	424687	Nut, Control Linkage
77	HG44133	Fan Nut (order through Hydro-Gear)
78	483314	Belt, Transmission Drive
79	04001-54	Bolt, Hex Head 3/8-16 x 3"
80	482102	Grip, Brake Handle
81	462010	Brake Handle Assembly
82	43722	Spacer, Brake Handle
83	483453-05	Bearing
84	483538	Spring, Brake
85	04107-01	Bolt, Hex Head 3/8-16 x 1-1/4" Special Lock
86	04110-03	U-Nut, 3/8-16
87	44157	Rod, Brake Linkage
88	462434	Handle Bar Assembly RH, w/Grip
89	484376	Grip
	483320	Pulley, 4-1/2" Dia. 1" Bore
	43719	Spacer, Linkage

EXHAUST AND ELECTRICAL SYSTEM - SFZ48 & SFZ52



2011 SFZ ES

EXHAUST AND ELECTRICAL SYSTEM - SFZ48 & SFZ52

Ref. No.	Part No.	Description
1	48298	Fuse, 20 amp
2	483473	Switch
3	483621	Wire Harness, Main
	483628	Wire Harness Adapter, Kawasaki (not shown)
4	483474	Switch, Seat
5	483537	Hourmeter
6	48029-13	Battery Cable, Red 25"
7	48029-11	Battery Cable, Black 27"
8	04001-44	Bolt, Hex Head 1/4-20 x 1/2"
9	04020-02	Nut, 1/4-20
10	483642	Double Fuse Assy. (incl. items 1, 14, 15, 46)
11	482588	Clip, Wire
12	04110-03	U-Nut, 3/8-16
13	04107-03	Bolt, Hex Head 3/8-16 x 1-1/4" Special Lock
14	483571	Cover, Sealed Double
15	483629	Fuse Holder
16	48029-09	Battery Cable, Red 9"
17	04017-04	Bolt, Hex Head 1/4-20 x 1/2" Serr. Flange
18	461996	Battery Cover (incl. items 19 & 20)
19	483452	Pad, Battery Hold Down
20	483508	Rubber Pad
21	483665	Battery (not avail. through Scag)
22	483381	Muffler, Briggs & Stratton
	484036	Muffler, Kawasaki
23	**	Exhaust Gasket
24	**	Lockwasher
25	**	Bolt
26	04040-15	Flatwasher, 5/16-.375 x .875 x .083
27	04001-32	Bolt, Hex Head 3/8-16 x 1-1/4" (Kawasaki)
	04030-04	Lockwasher, 3/8" Spring (Kawasaki)
	04001-11	Bolt, Hex Head 5/16-18 x 1-1/2" (Briggs)
	04019-03	Nut, 5/16-18 Serrated Flange
	04031-03	Lockwasher, 5/16" Spring (Briggs)
	04011-07	Capscrew, Hex Head 3/8-16 x 1-1/4" Self Tap (Briggs)

Ref. No.	Part No.	Description
28	483278	Solenoid
29	04011-14	Bolt, Self Tapping 1/2-20 x 3/4" Shakeproof
30	483364	Tank, LH
31	483434	Throttle Cable
32	462036	Instrument Panel w/Decal
33	483435	Choke Cable
34	483472	Ignition Switch
35	483366	Key, Ignition
	483609	Key w/Shroud
	462069	Key Assembly w/Fob
36	483957	PTO Switch
37	04001-08	Bolt, Hex Head 5/16-18 x 3/4"
38	04030-03	Lockwasher, 5/16" Spring

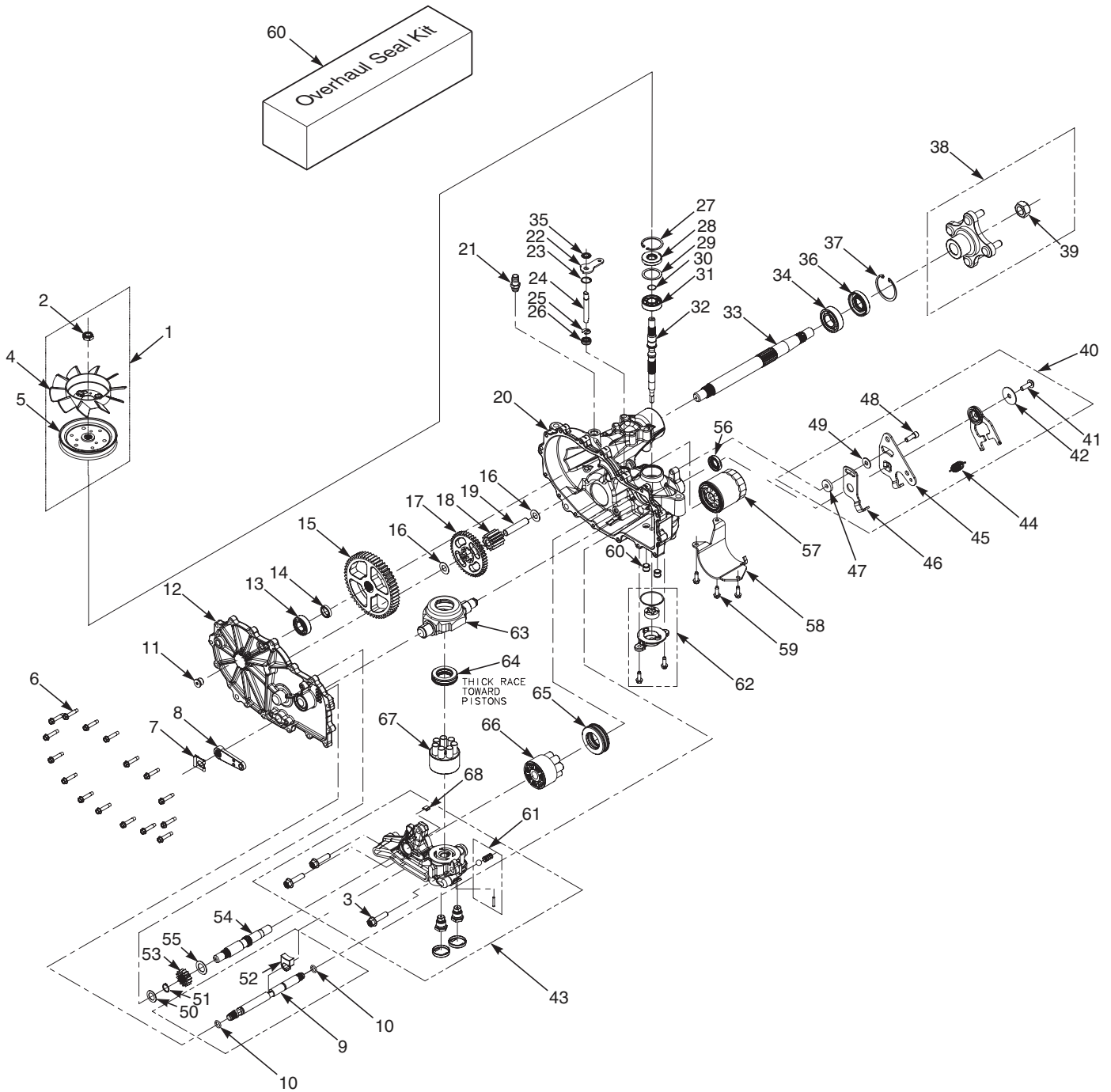
** Available through individual engine manufacturer.

SFZ48 & SFZ52 FUEL SYSTEM

Ref. No.	Part No.	Description
1	462379	Fuel Tank Assembly, SFZ - Low Perm
2	483536	Grommet
3	484243	Fuel Gauge Assembly
4	482571	Bushing, .56 Dia. Viton
5	483555	Fuel Tube Assembly
6	484286	Fuel Cap, Tethered
7	48059-01	Clamp, Fuel Hose 1/4"
8	483617	Fuel Hose, 1/4" Non-Perm (order by inch)
9	*	Fuel Filter
10	04001-08	Bolt, Hex Head 5/16-18 x 3/4"
11	04030-03	Lockwasher, 5/16" Spring
12	04040-15	Flatwasher, 5/16-.375 x .875 x .083
13	484285	Grommet, Viton
14	484333	Remote Vent
15	48059-02	Clamp, Fuel Hose 7/32"
16	484347	Hose, 1/4" Vapor Recovery (order by inch)
17	48059-05	Clamp, Vapor Recovery Hose
18	484345	Hose, 3/16" (order by inch)
19	484342	Carbon Canister
20	*	Fuel Hose
21	48136-17	Clamp, Hose
22	452226	Bracket Weldment, SFZ48/52
23	04003-12	Bolt, Carriage 5/16-18 x 3/4"
24	04019-03	Nut, Serrated Flange 5/16-18
25	484279-01	Tube, Fuel Tank Insert
26	484343-01	Mender, 1/4 x 3/16 w/0.02 Hole

* = Available through engine manufacturer only.

ZT-3100 HYDRAULIC AXLE ASSEMBLY



ZT-3100 HYDRAULIC AXLE ASSEMBLY

Ref. No.	Part No.	Description
1	HG72125	Kit, Fan & Pulley
2	HG51244	Nut, Hex Locking 1/2-20
3	HG52137	Bolt, Hex Head 3/8-16 x 1-1/2" Patch
4	HG53823	Fan, 7" Dai. (10 Blade)
5	HG52364	Pulley, Cupped 4-1/2" Dia
	HG52366	Hub, Pulley
6	HG51190	Bolt, Hex Head 1/4-20 x 1-11/4"
7	HG52027	Clip, Retaining
8	HG52639	Handle, Brake
9	HG52640	Shaft, Brake
10	HG51804	O-Ring
11	HG9005110-5600	Plug, 9/16-18
12	HG71572	Kit, Side Cover RH
	HG71574	Kit, Side Cover LH
13	HG44121	Bearing, Ball .75 x 40 x 12
14	HG52161	Spacer, .75 x 1.0 x .257
15	HG52108	Gear, 54T
16	HG50132	Washer, .5 x 1.0 x .03
17	HG52110	Gear, 45T
18	HG52586	Gear, 11T
19	HG51083	Jackshaft Pin
20	HG71413	Kit, Housing RH
	HG71421	Kit, Housing LH
21	482800-03	Fitting
22	HG51329	Arm, By-Pass
23	HG51627	Ring, Retaining .750 Internal
24	HG52136	Rod, By-Pass
25	HG51628	Ring, .Retaining .375 External
26	HG51626	Seal, Lip .375 x .75 x .25
27	HG50329	Ring, Retaining 2.06 Internal
28	HG51161	Seal, Lip 17 x 40 x 7
29	HG50951	Washer, 1.23 x 1.56 x .04
30	HG2000022	Ring, Retaining Wire
31	HG50315	Bearing, Ball 17 x 40 x 12 Open
32	HG52155	Shaft, Input
33	HG71569	Shaft Kit, Axle
34	HG50771	Bearing, Ball 1.0 x 52 x 15 Open
35	HG51630	Ring, Retaining .375 External

Ref. No.	Part No.	Description
36	HG50772	Seal, Lip 25 x 52 x 10 TC Gray
37	HG50859	Ring, Retaining 2.06 Internal
38	HG71505	Hub Kit
39	HG50863	Nut, Hex Locking
40	HG71595	Kit, RTN Assembly
41	HG51812	Bolt, 5/16-24 x 1" Patch
42	HG51950	Washer, .343 x 1.5 x .062
43	HG71565	Kit, Center Section RH
	HG71566	Kit, Center Section LH
44	HG51605	Spring
45	HG52682	Arm, Control
46	HG51945	Arm, Neutral RH
	HG51946	Arm, Neutral LH
47	HG52527	Spacer, .320 x 1.005 x .179
48	HG51616	Bolt, 5/16-24 x 1" Patch
49	HG44130	Washer, .34 x .88 x .06
50	HG44371	Washer, .63 x 1.0 x .05
51	HG44145	Ring, Retaining
52	HG52641	Pawl, Brake
53	HG52341	Gear, 14T
54	HG52150	Shaft, Motor
55	HG51069	Washer, .72 x 1.16 x .04
56	HG51140	Seal, Lip 18 x 32 x 7
57	HG52114	Filter
58	HG52257	Filter Guard
59	HG50752	Bolt, 1/4-20 x 3/4"
60	HG71410	Seal Kit
61	HG71436	Kit, Charge Relief
62	HG71411	Kit, Charge Pump
63	HG51048	Trunnion Swashplate
64	HG50551	Thrust Bearing
65	HG51462	Thrust Bearing
66	HG71579	Kit, Motor Cylinder Block
67	HG70723	Kit, Cylinder Block
68	HG71448	Plate, By-Pass
69	HG71436	Kit, Charge Relief

REPLACEMENT DECALS AND INFORMATION PLATES

WARNING
 **INSTALL BELT COVER BEFORE OPERATING MACHINE**
 READ OPERATOR'S MANUAL 483402 1

WARNING
DO NOT OPERATE WITHOUT DISCHARGE CHUTE, MULCHING KIT, OR ENTIRE GRASS CATCHER INSTALLED 483405 2

IMPORTANT
 Operation on slopes can be hazardous.
 This machine was originally equipped with a Rollover Protection Device with a Roll Bar and Seat Belt.
 See your dealer if either is missing or damaged. 483425 3

DANGER


SPINNING BLADES
KEEP CLEAR

BLADE CONTACT & THROWN OBJECTS CAN INJURE 4

FORWARD
 **F**
REVERSE
R  5

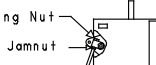
WARNING
 Replace seat only with Scag approved seat with seat mounting provisions and Scag approved seat belts.
 Failure to follow these directions could result in injury or death in the event of a rollover. 483426 6

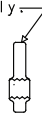
48
COMMERCIAL GRADE 7

WARNING
ROTATING BLADES AND BELTS
 * Keep hands, feet & clothing clear
 * Keep all guards in place
 * Shut off engine & disengage blade clutch before servicing
 * Use caution in directing discharge
 * Read instruction manual before operating
DO NOT OPERATE UNLESS GRASS CATCHER, MULCHING KIT OR DISCHARGE CHUTE IS INSTALLED 483406 8


IMPORTANT ADJUSTMENT PROCEDURES
 READ OPERATOR'S MANUAL FOR MORE DETAILS
 Check tire pressure - Drive tires-8 psi -
 - Caster tires-25 psi


FREE WHEEL OPERATION
 To move machine without running engine, pull both dump valve rods up and back (located at rear of machine) and latch. Pull rods forward and latch into front slot to operate mower.

NEUTRAL ADJUSTMENT
 Adjusting Nut
 Jamnut

 To re-set neutral, loosen jamnut. With operator in seat, control levers in neutral and brake off, turn adjusting bolt until wheel doesn't creep. Tighten jamnut. Repeat for opposite side. If wheels still creep after adjustment, see an authorized Scag dealer.

HYDRAULIC FLUID LEVEL
 Check hydraulic fluid level while fluid is cool. Fluid level should be in sight window. Fill with 20W50 motor oil only.


IMPORTANT
 Do not overfill. Room for hot fluid expansion must be allowed or resulting expansion may cause leaks in the system


TRACKING ADJUSTMENT
 Control Lever
 Stop Bolt

 If machine pulls to right, adjust LH control stop bolt CW (Inward) to slow left wheel down.
 If machine pulls to left, adjust RH control stop bolt CW (Inward) to slow right wheel down. 483660 9

SCAG

 PULL OUT TO ENGAGE
 PUSH INTO DISENGAGE
MOWER DECK 10

SCAG FREEDOM Z 11


MANUFACTURED UNDER ONE OR MORE OF THE FOLLOWING PATENTS:

 PATENTS PENDING 13

DECK LATCH RELEASE

 Made in the USA by **SCAG**

START/DRIVE PROCEDURE
 - Engage parking brake
 - Disengage mower deck drive
 - Move control handles to neutral position
 - Start Engine
 - Release parking brake
 - Select forward or reverse with hydro control levers

MADE IN USA
 WASHINGTON, WA

WARNING

 AVOID SERIOUS INJURY OR DEATH
 Read the Operator's Manual
 Make sure all guards are in place
 Operate only on slopes you can hold up
 an authorized Scag
 stop blades and back down slowly
 if mowing stops go up hill.
 Avoid sudden turns
 Do not run when children or
 others are around
 When carrying children even with
 look down and behind before
 and while backing
 Mop up wet grass (leaves, sticks, twigs, etc.) in place
 and working
 Remove objects that could be
 thrown by the blades
 (Inland operators only) 483467

1 14 13 21 22 23 31 32 41
 1 13 2 21 3 31 4 41

REPLACEMENT DECALS AND INFORMATION PLATES

Ref. No.	Part No.	Description
1	483402	Decal, Belt Cover
2	483405	Decal, Warning
3	483425	Decal, ROPS
4	483505	Decal, Spinning Blades
5	481568	Decal, Traction Control
6	483633	Decal, Seat Replacement
7	483494	Decal, 48 Commercial
	483495	Decal, 52 Commercial
8	483406	Decal, Knives
9	483660	Decal, Adjustment SFZ
10	483499	Decal, Instrument Panel - SFZ48 & SFZ 52
11	483501	Decal, Front SFZ
12	483467	Decal, Cutting Height
13	483044	Decal, Patent
*	462155	Spanish Decal Kit - SFZ (not shown)
*	01411	DVD Video, Tips for Safe Operation of Your Scag Zero-Turn Mower (not shown)

ELECTRICAL SCHEMATIC

