

Technical Manual

SCAG'S COMMERCIAL MOWER

MODELS

SR-18-B Tractor
SM-61 Cutter Deck
SM-48 Cutter Deck

Scag Power Equipment, Inc.
Box 589
Elm Grove, Wisconsin, 53122

Part No. 01001
Printed in USA 10-83

WARNING

If incorrectly used, this machine can cause severe injury. Those who use and maintain the machine should be trained in its proper use, warned of its dangers, and should read entire manual before attempting to set up, operate, adjust or service the machine.

LIMITED WARRANTY-COMMERCIAL EQUIPMENT

This warranty extends to the original retail purchaser only and commences on the date of original retail purchase.

Any part of the Scag commercial mower manufactured by Scag and found in the reasonable judgement of Scag to be defective in material or workmanship, will be repaired or replaced by an authorized service dealer without charge for parts and labor.

The Scag mower including any defective part must be returned to an authorized Scag service dealer within the warranty period. The expense of delivering the mower to the dealer for warranty work and the expense of returning it back to the owner after repair or replacement will be paid for by the owner. Scag's responsibility in respect to claims is limited to making the required repairs or replacements, and no claim of breach of warranty shall be cause for cancellation or rescission of the contract of sale of any Scag mower. Proof of purchase will be required by the dealer to substantiate any warranty claim. All warranty work must be performed by an authorized Scag service dealer.

This warranty is limited to one year from the date of original retail purchase for any Scag mower that is used for commercial purposes, or any other income-producing purpose (90 days for rental use).

This warranty does not cover any mower that has been subject to misuse, neglect, negligence, or accident, or that has been operated in any way contrary to the operating instructions as specified in the Technical Manual. The warranty does not apply to any damage to the mower that is the result of improper maintenance, or to any mower or parts that have not been assembled or installed as specified in the Technical Manual. The warranty does not cover any mower that has been altered or modified so as to adversely affect the product's operation, performance or durability or that has been altered or modified so as to change the intended use of the product. In addition, the warranty does not extend to repairs made necessary by normal

wear, or by the use of parts or accessories which in the reasonable judgement of Scag, are either incompatible with the Scag mower or adversely affect its operation, performance or durability. This warranty does not cover engines, electric starters, batteries, belts and tires which are warranted separately by their manufacturer and for a different period of time.

Scag Power Equipment reserves the right to change or improve the design of any mower without assuming any obligation to modify any mower previously manufactured.

All other implied warranties are limited in duration to the one (1) year warranty period or ninety (90) days for mowers used for rental purpose. Accordingly, any such implied warranties including merchantability, fitness for a particular purpose, or otherwise, are disclaimed in their entirety after the expiration of the appropriate one-year or ninety day warranty period. Scag's obligation under this warranty is strictly and exclusively limited to the repair or replacement of defective parts and Scag does not assume or authorize anyone to assume for them any other obligation. Some states do not allow limitations on how long an implied warranty lasts, so the above limitation may not apply to you.

Scag assumes no responsibility for incidental, consequential or other damages including, but not limited to, expense for gasoline, expense of delivering the mower to an authorized service dealer and expense of returning it back to the owner mechanic's travel time, telephone or telegram charges, rental of a like product during the time warranty repairs are being performed, travel, loss or damage to personal property, loss of revenue, loss of use of the mower, loss of time or inconvenience. Some states do not allow the exclusion or limitation of incidental or consequential damages. So the above limitation or exclusion may not apply to you.

This warranty gives you specific legal rights, and you may also have other rights which vary from state to state.

SPECIFICATIONS/STANDARD FEATURES

ENGINE:

Commercial 18 HP Briggs and Stratton twin cylinders, cast iron sleeves, dual element air filter, magnetron ignition, electric start.

TRANSAXLE:

Peerless 5-speed forward from 1.5 - 6 mph, 2.5 mph reverse @ 3,600 RPM, ball bearing axle support, hardened steel gears.

FUEL TANK:

3 U.S. Gallons, 11.4 Liters.

BRAKE SYSTEM:

Disc brake for stopping and parking, stainless steel cable.

INSTRUMENT PANEL:

Ammeter, hour meter, key switch, fuses, throttle and choke with stainless steel cables.

TIRES:

Drive Wheels 16 x 6.50 tubeless Turf Saver tread on 40 inch centers.

Rear Wheel 16 x 6.50 tubeless tire, taper roller bearings.

Caster Wheels 8.60 x 2.80-4, 4 ply, with inner tube, split rims, roller bearings.

STEERING:

Aircraft yoke-type steering handle, stainless steel cable.

SEAT

Deluxe arm rests, lumbar back support, fully contoured and foam padded, adjustable fore and aft, safety belt bar

SAFETY GROUP

Foot actuated engine kill, transaxle neutral interlock, blade clutch safety switch.

ELECTRIC SYSTEM:

12 volt battery 30 AH-3 amp dc alternator.

LIFT SYSTEM:

Manual winch with automatic safety brake-clutch, stainless steel cable.

TRAVEL CONTROL:

Integrated foot pedal clutch - brake, stainless steel cable.

RIDER FRAME:

Hybrid tractor-trailer with stabilized pivot mount.

CUTTER DECK:

7 and 10 gauge steel weldment, cast aluminum greasable spindle housings with dual ball bearings, extra large cast iron pulleys, novel blade design provides constant overlap even after multiple sharpenings.

CERTIFICATION:

Meets applicable ANSI, OSHA, and European health and safety standards.

SPECIFICS FOR MODEL	SR 48	SR 61
Engine	18 HP at 3600 RPM	18 HP at 3600 RPM
True Cutting Width	48.0 inches - 122 cm.	61.0 inches - 155 cm.
Height of Cut	1 to 4 inches	1 to 4 inches
Overall Width	49 inches	62-1/8 inches
Overall Length	90-1/2 inches	98 inches
Weight	650 lbs.	700 lbs.

WARNING

Do NOT travel straight down slopes exceeding 14 degrees (25 percent). When climbing a steep slope and the tires begin to slip, the grade is too steep for safe operation. Angle the mower to a less steep slope until tires stop slipping and traction is regained. Raising the cutter deck slightly will improve traction.

SAFETY RECOMMENDATIONS

Recommended Practices from the American Standard Safety Specifications for Power Lawn Mowers

Training

- 1.** Regard your mower as a piece of power equipment and teach this regard to all who operate this unit.
- 2.** Never allow children or young teenagers to operate the mower.
- 3.** Be sure you know how to stop the mowers and engine at a moment's notice.
- 4.** Instruct children to keep away from the area of operation at all times.

Preparation

- 1.** Before starting operation, clear the entire green area of all debris that could catch on or be thrown by the mowers.
- 2.** Unless there is very good artificial light, mow only during the daylight.
- 3.** Fill gasoline-driven mowers outdoors. Avoid spilling gasoline and don't fill the tank while engine is running or while you are smoking.

Operation

- 1.** Give complete and undivided attention to the job at hand.
- 2.** Keep the area of operation clear of all persons.
- 3.** Don't start engine and cutter blades until you are ready to start mowing. Stop the engine whenever you leave the operator seat.
- 4.** If an object has been struck, stop machine, check for breakage and replace any damaged parts prior to continuation of operation.

- 5.** Do not pass or stand on the grass discharge side of any mower with the engine running. Stop operation when another person approaches.

Maintenance and Storage

- 1.** Follow implicitly the manufacturer's recommendations for maintenance.
- 2.** Never adjust the mowers or change attachments until the engine has been turned off and the spark plug wire disconnected.
- 3.** If carburetor adjustment is necessary, stand to one side and keep feet and hands in the clear while making adjustments.
- 4.** Keep engine free from accumulations of grass, leaves, or excessive grease. An accumulation of these combustible materials may result in a fire.
- 5.** Store gasoline in a safe container in a cool, dry place.
- 6.** Keep the mower and fuel container in locked storage to prevent children from playing and tampering with them.
- 7.** Maximum mowing results and safety can only be expected if the mower is maintained and operated correctly.
- 8.** Gasoline powered equipment or fuel containers should not be stored in basement or any closed area where heating or heat appliances or open pilot lights are present unless fuel is completely drained from power equipment and fuel containers.

ASSEMBLY INSTRUCTIONS

- 1.** Remove all crating and packing materials.
- 2.** Lay out loose bolts and nuts according to the "Where Used" as listed in the loose parts packing list.
- 3.** Set the cutter deck level, about 2 inches off the floor.
- 4.** Remove belt cover.
- 5.** Move tractor assembly to cutter deck so that mounting brackets clear engine deck.
- 6.** Unwind winch lift cable and tilt engine deck to horizontal position. Insert drift pins on each side to temporarily locate holes.

IMPORTANT

- 7.** Use lower set of holes in brackets for mowing two inches and above (for under two inches use upper set of holes). Insert six 7/16 - 14 x 1 bolts, flat washers, lock washers and nuts. Tighten all six bolts very securely. Then go back and retorque each one.
- 8.** Raise cutter deck using lift winch and assemble front caster wheels using six 5/16 - 18 x 3/4 bolts, lock washers and nuts.
- 9.** Untie mower engage control rod and insert into bell crank lever under engine deck at rear left side. Secure with hair pin.

10. Route belt from engine to cutter deck over center spindle pulley. Be sure belt clears the belt guide saddle at center spindle and lies on the stamped steel guide pulley support bracket, between the pulley and its belt guide.

11. Push mower engage lever forward until it snaps to rest. Adjust belt tension as specified in adjustment section. **Do Not Adjust Too Tight!**

12. Install grass discharge deflector chute using two 5/16 - 18 x 1 bolts and lock nuts.

13. Place seat assembly on rider support channel using 2nd and 3rd hole aft from steering handle. Install two 7/16 - 14 x 1-1/4 bolts, lock washers and nuts. Stand back and sight straight ahead. Align seat spring parallel with frame. Tighten bolts very hard.

14. Adjust arm rests to horizontal position (if necessary) by turning setscrew in rear of each arm.

15. Insert steering handle on shaft and secure with one 5/16 - 18 x 1-1/2 bolt, 2 washers and locknut. Tighten very hard.

16. Reduce tire pressure to values specified in

maintenance section.

NOTE: Tires are over inflated for shipping purposes.

17. Remove battery and fill each cell with 1.265 specific gravity, battery grade electrolyte to level indicator. **Do Not Fill** more than 3/16" above plates. Allow battery to set for 20 minutes. Refill to level. Battery may be placed on charge at 3 amperes for maximum capacity (not usually necessary)

18. CAUTION: Reinstall battery. **Connect positive lead first.**

CAUTION: Note that battery contains sulfuric acid which is poison and causes severe burns. Avoid contact with skin, eyes or clothing. Flush spills with water.

19. Check engine crankcase. It was filled at the factory, but may need additional oil for proper level.

20. Fill fuel tank.

21. Open shut-off under tank.

22. After initial run and inspection of cutter belt, replace belt cover.

ADJUSTMENTS

1. Check that all belts clear their belt guides by about 1/8 to 3/16 inch. Adjust guides if necessary.

2. Adjust engine to cutter deck turnbuckle so that about 10 lb. pull sideways deflects belt 1/2 inch. **Do Not Overtighten!** Only a moderate force should be used on control lever.

3. Adjust cutter deck "double B" belt by turning lock nut on "J" pull rod. About 10 lbs. pull sideways deflects belt 1/2 inch. Test belt at short section between center spindle and left hand spindle (do not test long section at rear of deck).

IMPORTANT

Readjust new belt tensions after 4 hours of operation and again after about 24 hours to take up initial stretch.

4. Transaxle shifter neutral may require adjustment so that starter engages at neutral stop. Rotate swivel joint if necessary to lengthen or shorten the shift rod.

5. Set parking brake before starting engine.

6. Please Remember:

To start engine, three safety switches must be activated:

1. The shift lever must be in neutral.
2. The mower engage lever must be pulled all the way back (and held there)
3. The left foot safety switch pedal must be depressed

7. Run new engine at half speed about 5 minutes

before applying any load.

8. Adjust fuel-air mixture valves according to specifications in engine manual.

9. Release parking brake by depressing right hand foot pedal, lift brake lever and rotate 90 degrees.

10. Readjust neutral, if necessary.

BRAKE ADJUSTMENT

11. Brake must be adjusted in following sequence: With transaxle belt engaged (foot pedal in up position), move brake cable guide pulley to permit brake lever to rest against its stop. Move pulley in mounting slot to make this adjustment. Then adjust brake lever nuts to permit free movement of lever about 1/8 inch from stop by pushing lever sideways with hand. Lock jam nut securely. If brake lever is too tight, shifting may be impossible and brake wear will be excessive.

FOOT PEDAL

12. Adjust foot pedal control cable sheath by adjusting the two cable mounting nuts, so that the pedal is about 4-1/4 inches above foot rest plate.

TIRE PRESSURES

13. Recommended pressures:

Caster Wheels	25 PSI
Rear Steering Wheel	25 PSI
Drive Wheels	15 PSI

OPERATING INSTRUCTIONS

1. Read and understand the section on safety suggestions before any attempt to operate.

IMPORTANT

2. Always turn winch handle two additional turns counterclockwise for more slack after cutter deck is lowered, to provide floatation. To raise deck turn winch handle clockwise.

3. Always transport with cutter deck down and lift cable in float position.

4. Start engine.

5. Depress foot pedal, shift out of neutral, and very gently release foot pedal.

6. To stop, depress foot pedal to disengage transaxle and to apply brake.

7. While making turns, depress foot pedal slightly to make gentle, smooth turns.

8. Engage cutter deck belt by pushing mower engage lever forward until it snaps to rest.

WARNING

Never run cutter blades with cutter deck in raised position.

ROUTINE MAINTENANCE SERVICE

EVERY DAY

1. Check engine oil. Do not fill above dipstick marks.

2. Clean engine blower screen (more frequently in dirty, dusty conditions).

3. Clean debris under belt cover.

4. Sharpen cutter blades.

EVERY WEEK

1. Change engine oil.

2. Check battery acid level. Add distilled water if

necessary, but do not fill over 3/16 inch above plates. Excess acid will overflow while running and damage painted surfaces.

3. Clean carburetor air filter

4. Check tire pressures.

EVERY MONTH

1. Grease all fittings, brake lever and winch.

2. Clean and gap sparkplugs

3. Adjust brake lever.

LUBRICATION

Every two hundred hours of operation lubricate all grease fittings. Periodically apply LPS to moving parts at the cutter deck idler pulley cam links.

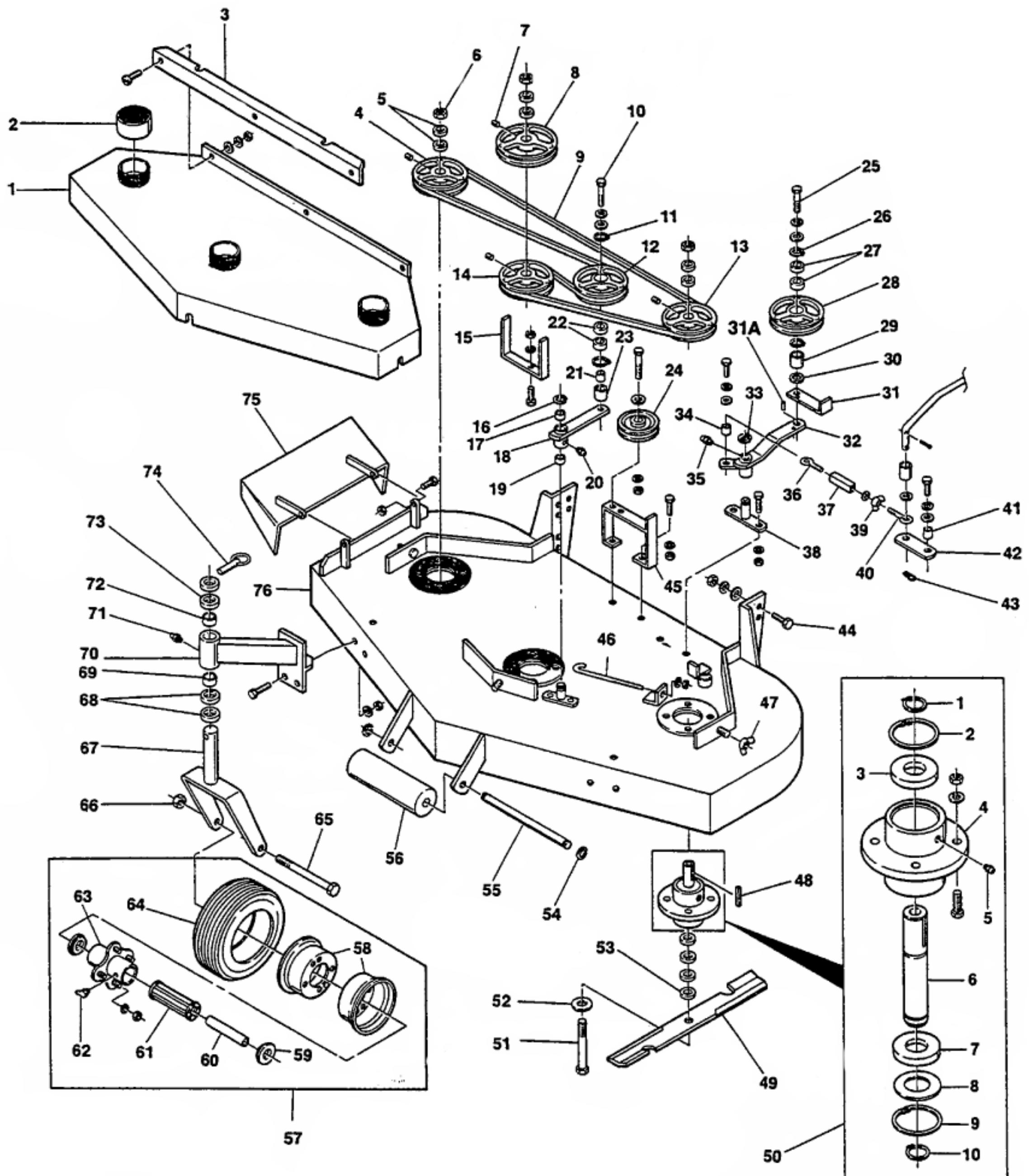
Grease gears, shaft and handle threads on winch. Do not oil brake mechanism on winch.

Apply grease between transaxle brake lever and brake pins.

Location of grease fittings

Location of grease fittings	Number
Caster Wheels	2
Caster wheel pivot shaft	2
Spindle bearings	3
Idler pulley pivots	3
Rider frame pivots	2
Controls bellcrank	2
Left hand axle bearing	1
Steering handle	1
Foot pedal	1
Rear wheel vertical pivot	1
Rear wheel bearings	1
Total Number	19

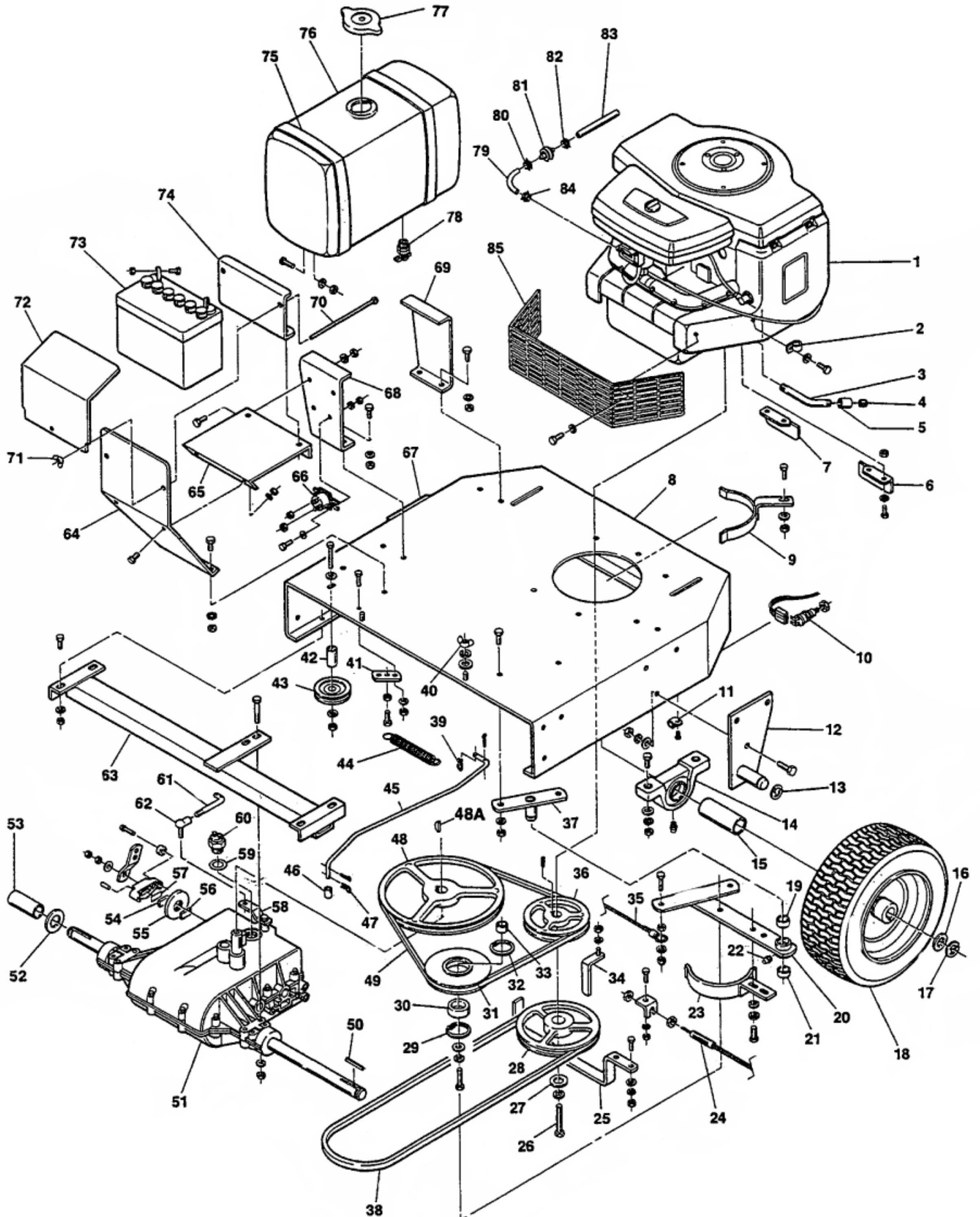
CUTTER DECK ASSEMBLY



CUTTER DECK ASSEMBLY

Ref. No.	Part No.	Description	Ref. No.	Part No.	Description
1	45032	Belt Cover Weldment 61" Cutter Deck	42	42057	Cam Link
1	45005	Belt Cover Weldment 48" Cutter Deck	43	04062-01	Hairpin
2	48098	Spindle Shield	44	04001-27	Bolt, Hex Head 7/16-14 x 1
3	42045	Skirt - Belt Cover	45	45012	Idler Pulley Support
4	48060	Pulley - Cutter Spindle	46	43028	J Pull Rod
5	43038	Spacer - Cutter Blade	47	04022-04	Wing Nut
6	04020-09	Nut, Hex Head 5/8-11	48	04063-01	Key 1/4 x 1/4 x 1-1/4
7	04012-01	Set Screw	49	48111	Cutter Blade - 61" Cutter Deck
8	48069	Pulley - 61" Cutter Deck	49	48110	Cutter Blade - 48" Cutter Deck
8	48061	Pulley - 48" Cutter Deck	50	46020	Cutter Spindle Assy.
9	48084	Belt - 61" Cutter Deck	50-1	04050-04	Retaining Ring
9	48082	Belt - 48" Cutter Deck	50-2	04050-07	Retaining Ring
10	04001-35	Bolt, Hex Head 1/2-20 x 2-1/2	50-3	48101	Bearing
11	04050-06	Retaining Ring	50-4	41001	Spindle Housing
12	48062	Pulley - Idler	50-5	48114-02	Grease Fitting
13	48060	Pulley - Cutter Spindle	50-6	43001-02	Spindle, Cutter Blade
14	48060	Pulley - Cutter Spindle	50-7	48101	Bearing
15	42063	Belt Guide - 61" Cutter Deck	50-8	04041-02	Washer
15	42004	Belt Guide - 48" Cutter Deck	50-9	04050-07	Retaining Ring
16	04050-02	Retaining Ring	50-10	04050-04	Retaining Ring
17	48100-05	Bearing	51	04001-41	Bolt, Hex Head 5/8-13 x 9-1/2
18	45016	Idler Arm Weldment	52	04040-10	Washer
19	48100-05	Bearing	53	43038	Spacer - Cutter Blade
20	48114-01	Grease Fitting	54	04050-01	Retaining Ring
21	43045	Sleeve	55	43026	Guide Roller Shaft
22	48102	Bearing	56	48038	Guide Roller
23	43040	Spacer	57	48006-01	Caster Wheel - Complete Assy.
24	48068	Pulley - Belt Guide	58	48006-04	Rim Pair - Caster Wheel
25	04001-34	Bolt, Hex Head 1/2-20 x 2 (Thin Head)	59	48006-07	Retainer
26	04050-06	Retaining Ring	60	43022	Sleeve
27	48102	Bearing	61	48006-06	Roller Bearing
28	48062	Pulley - Idler	62	48114-03	Grease Fitting
29	43045	Sleeve	63	48006-05	Hub Assy
30	43041	Spacer	64	48006-02	Tire Only - Caster Wheel
31	42062	Belt Guide	—	48006-03	Inner Tube Only - Caster Wheel
31A	04060-03	Roll Pin	65	04001-37	Bolt, Hex Head 1/2-13 x 5-1/2
32	45017	Idler Arm Weldment	66	04021-07	Lock Nut, Hex Head 1/2-13
33	04050-02	Retaining Ring	67	45006	Caster Yoke Weldment
34	43042	Sleeve	68	43037	Spacer - Caster Wheel
35	48114-01	Grease Fitting	69	48100-01	Bearing
36	04070-02	Eyebolt - Left Hand Thread	70	45007	Caster Support Weldment
37	43025	Turnbuckle	71	48114-01	Grease Fitting
38	45037	Idler Pivot Weldment	72	48100-01	Bearing
39	04022-03	Wing Nut	73	43037	Spacer - Caster Wheel
40	04070-01	Eyebolt - Right Hand Thread	74	04066-01	Quick Pin
41	43042	Sleeve	75	45029	Discharge Chute Weldment
			76	45031	Cutter Deck Weldment - 61"
			76	45001	Cutter Deck Weldment - 48"

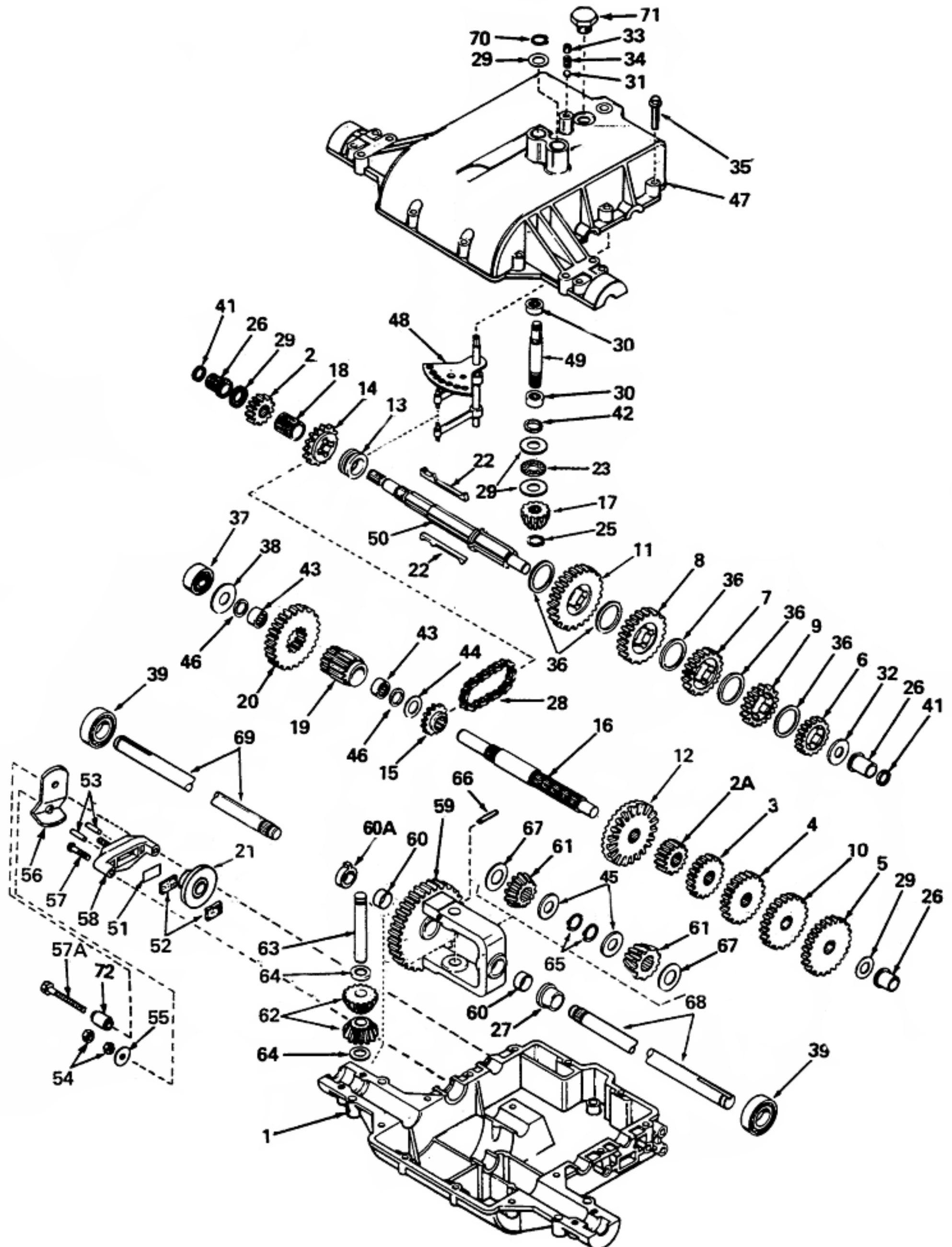
ENGINE DECK ASSEMBLY



ENGINE DECK ASSEMBLY

Ref. No.	Part No.	Description	Ref. No.	Part No.	Description
1	48002	Engine, 18-HP Briggs & Stratton	43	48066	Pulley, Brake Cable
2	48030	Clamp	44	48051	Spring, Belt Clutch
3	48115	Oil Drain Extension	45	43031	Belt Clutch Rod
4	48117	Oil Drain Plug	46	43043	Sleeve
5	48116	Pipe Coupler	47	04062-01	Hairpin
6	42068	Heat Shield - LH	48	48064	Pulley, Transaxle
7	42067	Heat Shield - RH	48A	04063-07	Woodruff Key #9
8	45003	Engine Deck Weldment	49	48080	Belt, A Section
9	45013	Belt Guide - Engine	50	04063-04	Key, 3/16 x 3/16 x 3-1/2
10	48019	Safety Switch - Blade Clutch	51	48003	Transaxle
11	48030	Clamp	52	04041-09	Thrust Washer
12	45027-02	Hitch Bracket Weldment-LH	53	43019-01	Drive Axle Spacer-RH
13	04050-02	Retaining Ring	54	48003-52	Brake Pad *790006
14	48104	Bearing, Pillow Block	55	48003-21	Brake Disc 790003
15	43019-02	Drive Axle Spacer-LH	56	48003-52	Brake Pad 790006
16	04041-08	Thrust Spacer	57	48003-51	Brake Pad Plate
17	04050-02	Retaining Ring	58	42061	Shift Lever
18	48004-01	Drive Wheel Assy., Tire & Rim	59	48122-01	Fiber Washer - .010
—	48004-02	Tire Only	59	48122-02	Fiber Washer - .020
—	48004-03	Rim Only	60	48021	Neutral Safety Switch
19	48100-05	Bronze Bearing	61	43029	Shift Connector Rod
20	45018	Idler Arm Weldment	62	48118	Ball Joint
21	48100-05	Bronze Bearing	63	43034	Transaxle Support
22	48114-01	Grease Fitting	64	42052	Battery Support
23	45014	Belt Guide, Idler Pulley	65	42051	Battery Shelf
24	48047	Foot Clutch Cable Assy.	66	48016	Starter Solenoid
25	42064	Belt Guide - Engine	67	45027-01	Hitch Bracket Weldment-RH
26	04001-29	Bolt, Hex Head 7/16-20 x 1-1/2	68	42042	Fuel Tank Bracket, Front
27	43048	Spacer, Crankshaft	69	42044	Fuel Tank Bracket Rear
28	48061	Pulley, Engine	70	04003-01	Bolt, Carriage 1/4-20 x 6
29	04050-06	Retaining Ring	71	04022-01	Wing Nut
30	48102	Bearing, Idler Pulley	72	42024	Battery Cover
31	48065	Pulley, Idler	73	48015	Battery
32	04050-06	Retaining Ring	74	42055	Battery Clamp
33	43044	Sleeve	75	42048	Fuel Tank Strap
34	45036	Belt Guide - Engine	76	48054	Fuel Tank, 3 Gallon
35	48046	Brake Cable Assy.	77	48055	Fuel Tank Cap
36	48063	Pulley, Engine	78	48056	Fuel Shut-off Valve
37	45015	Idler Pivot Weldment	79	48058-01	Fuel Hose - Short
38	48083	Belt, B Section - 61" Deck	80	48059	Hose Clamp
38	48081	Belt, B Section - 48" Deck	81	48057	Fuel Filter
39	04062-01	Hairpin	82	48059	Hose Clamp
40	04022-04	Wing Nut	83	48058-02	Fuel Hose - Long
41	42060	Spring Mounting Bracket	84	48059	Hose Clamp
42	43024	Spacer, Brake Cable Pulley	85	42125	Muffler Guard

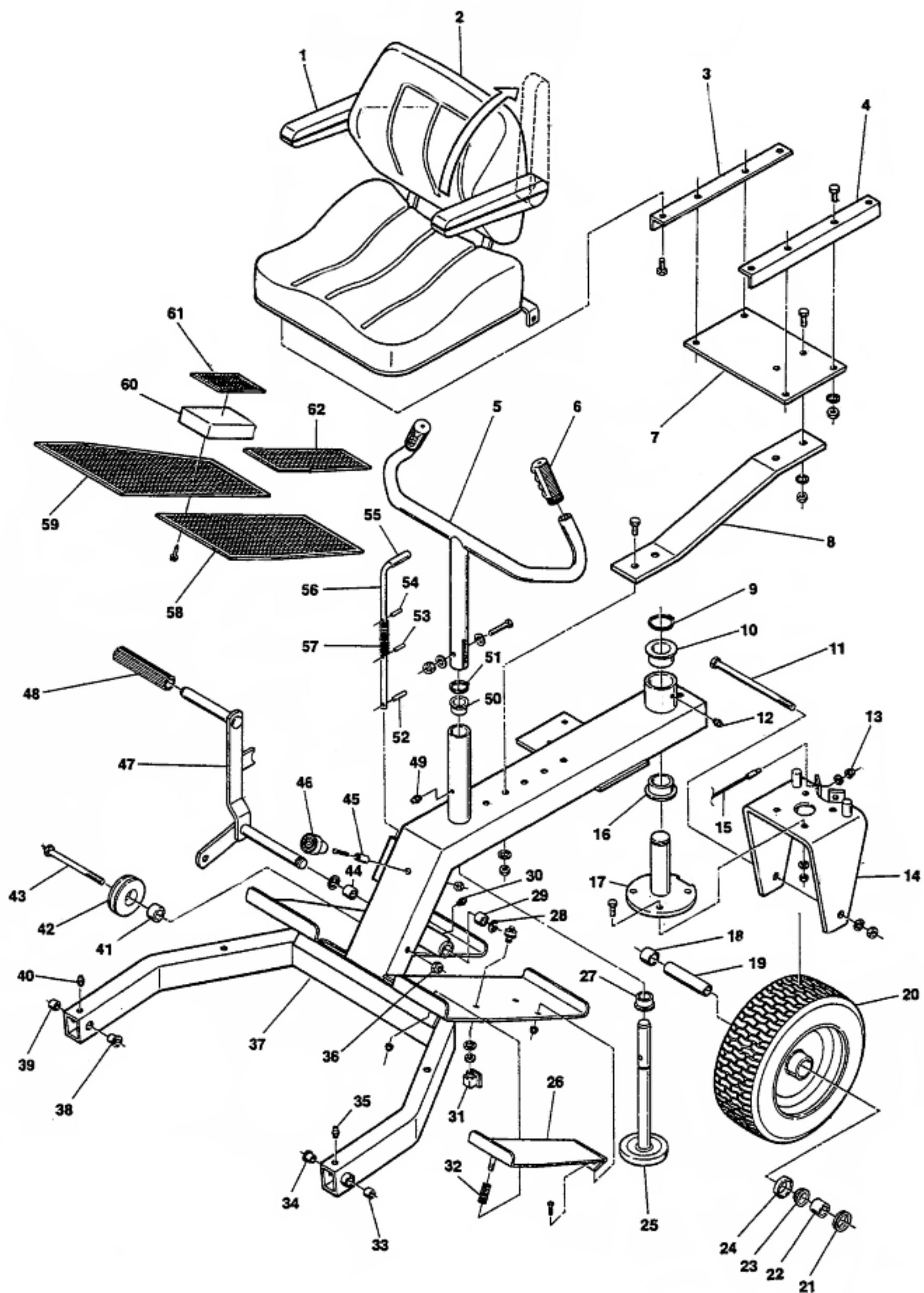
TRANSAXLE ASSEMBLY



TRANSAXLE ASSEMBLY

Ref. No.	Part No.	Description	Ref. No.	Part No.	Description
1	770071A	Case, Transaxle	38	780113	Washer, Flat
2	778136	Gear, Spur (15 Teeth)	39	780119	Bearing, Ball
2A	778145	Gear, Spur (12 Teeth)	41	788051	Ring, Square Cut
3	778151	Gear, Spur (15 Teeth)	42	788057	Ring, Square Cut
4	778126A	Gear, Spur (20 Teeth)	43	780112	Bearing, Needle
5	778128A	Gear, Spur (28 Teeth)	44	780114	Washer, Flat
6	778122A	Gear, Spur (22 Teeth)	45	780114	Washer
7	778124A	Gear, Spur (30 Teeth)	46	788053	Ring, Square Cut
8	778125	Gear, Spur (35 Teeth)	47	772084	Cover, Transaxle
9	778123A	Gear, Spur (25 Teeth)	48	784290	Rod & Fork Assy., Shift
10	778127A	Gear, Spur (25 Teeth)	49	776135	Shaft, Input
11	778146A	Gear, Spur (37 Teeth)	50	776183A	Shaft, Brake
12	778154	Gear, Bevel (42 Teeth)	51	790007	Plate, Brake Pad
13	784266	Collar, Shift	52	790006	Pad, Brake
14	786083	Sprocket (18 Teeth)	53	786026	Pin, Dowel
15	786082	Sprocket (9 Teeth)	54	792075	Locknut, 5/16-24
16	776204	Shaft, Counter	55	792076	Washer, Flat
17	778176	Bevel Pinion, Input	56	790016	Lever, Brake
18	786074	Spacer	57	792073	Screw, Hex Hd., Thread Forming, 1/4-20 x 1/-1/4
19	778138	Pinion, Output	57A	792085	Screw, Hex Hd. Thread Forming, 1/4-20 x 2-1/4
20	778139	Gear, Output	58	790005	Holder, Brake Pad
21	790003	Disk, Brake	59	778053A	Gear Assy., Differential (Incl. 2 of No. 60)
22	792089A	Key	60	780064	Bushing
23	780071	Bearing, Thrust	60A	780120	Bushing
25	788040	Ring, Retaining	61	778166	Gear, Bevel
26	780105A	Bushing, Flanged	62	778131	Pinion, Bevel
27	780118A	Bushing, Flanged	63	786034	Pin, Drive
28	786081	Chain, Roller (No. 41 Chain, 24 Links)	64	780065	Washer, Thrust
29	780072	Washer, Thrust	65	792109	Ring, Retaining
30	780122	Bearing, Needle	66	792040	Pin, Roll
31	792077	Ball, Steel	67	780001	Washer, Thrust
32	780109	Washer, Thrust	68	774558	Axle (25-1/4" Long)
33	792078	Screw, Set, 3/8-16 x 3/8	69	774506	Axle (13-1/4" Long)
34	792079	Spring	70	792035	Ring, Retaining
35	792073	Screw, Hex Hd. Thread Forming, 1/4-20 x 1-1/4	71	792074	Plug, Hex Hd., 9/16-18 Thread
36	780108	Washer, Thrust	72	786092	Spacer
37	780121	Bearing, Ball			

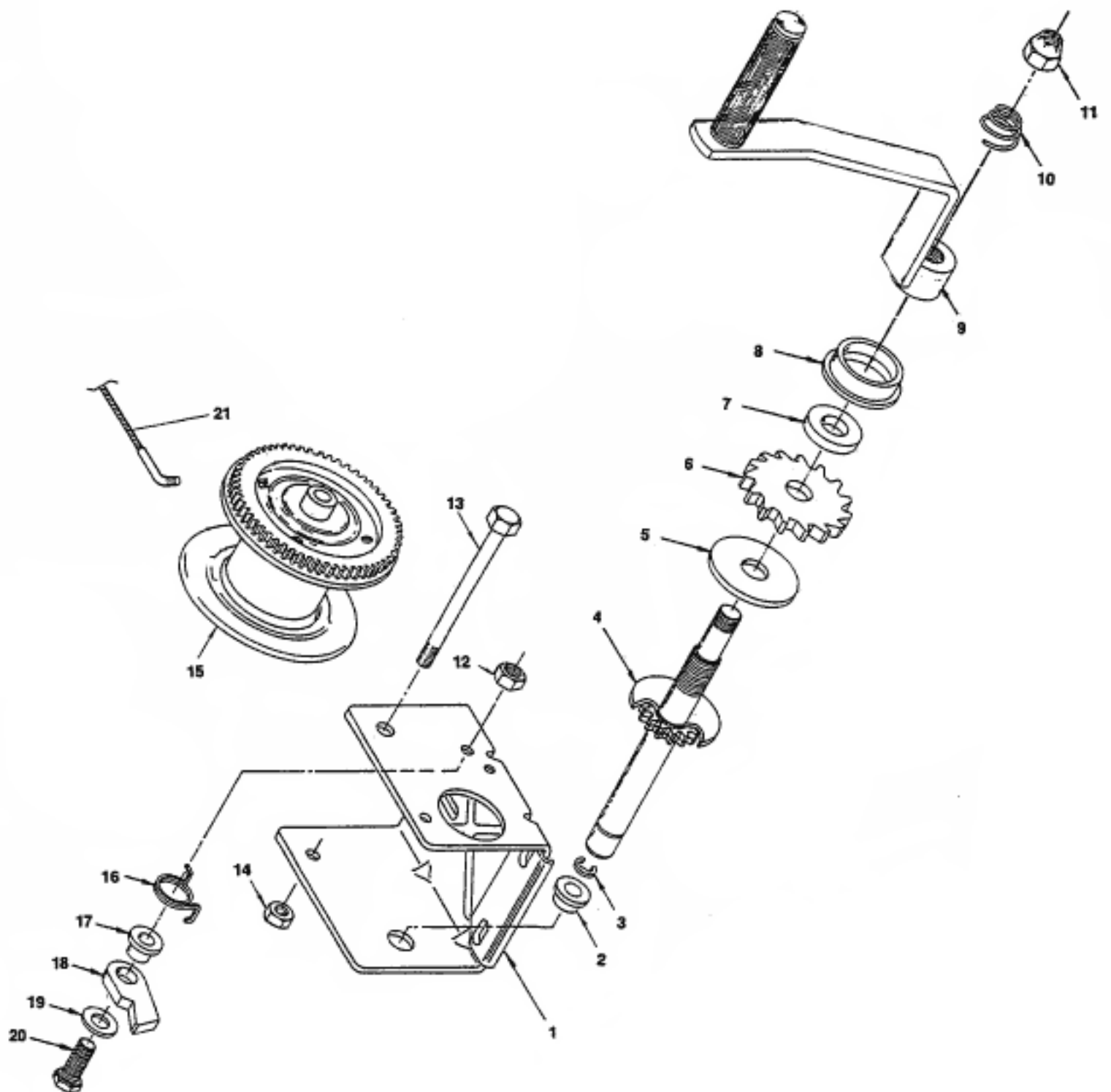
RIDER FRAME ASSEMBLY



RIDER FRAME ASSEMBLY

Ref. No.	Part No.	Description	Ref. No.	Part No.	Description
1	48013-02	Arm Rest	31	48026	Foot Safety Switch
2	48013-01	Seat	32	48049	Spring, Foot Safety Switch
3	42056	Seat Mounting Bracket	33	48100-06	Bronze Bearing
4	42056	Seat Mounting Bracket	34	48100-03	Bronze Bearing
5	45010	Steering Handle Weldment	35	48114-01	Grease Fitting
6	48094	Handle Grip	36	04021-07	Lock Nut, Hex Head 1/2-13
7	42025	Seat Mounting Plate	37	45004	Steering Frame Weldment
8	42026	Seat Support Spring	38	48100-03	Bronze Bearing
9	04050-05	Retaining Ring	39	48100-06	Bronze Bearing
10	48100-02	Bronze Bearing	40	48114-01	Grease Fitting
11	04001-40	Bolt, Hex Head 5/8-11 x 9	41	48100-04	Bronze Bearing
12	48114-01	Grease Fitting	42	48067	Pulley, Winch Cable
13	04021-03	Lock Nut, Hex Head 1/4-28	43	04001-36	Bolt, Hex Head, 1/2-13 x 5
14	45035	Rear Wheel Yoke Weldment	44	48100-06	Bronze Bearing
15	48042	Steering Cable Assembly	45	43046	Bumper Stop
16	48100-02	Bronze Bearing	46	48097	Bumper Stop Cover
17	45008	Rear Wheel Pivot Weldment	47	45019	Foot Pedal Weldment
18	43020-02	Rear Wheel Spacer, Long	48	48096	Foot Pedal Sleeve
19	43021	Rear Wheel Sleeve	49	48114-01	Grease Fitting
20	48005-01	Rear Wheel Tire & Rim Assy. w/Bearings	50	48100-01	Bronze Bearing
—	48004-02	Tire Only	51	04050-03	Retaining Ring
—	48005-03	Rim Only	52	04060-02	Roll Pin
21	48005-06	Grease Seal.	53	04060-01	Roll Pin
22	43020-01	Rear Wheel Spacer, Short	54	04060-01	Roll Pin
23	48005-05	Bearing Cone	55	48095	Grip
24	48005-04	Bearing Cup	56	43027	Parking Brake Lever
25	45009	Steering Shaft Weldment	57	48053	Spring
26	45033	Foot Safety Switch Weldment	58	48040	Rubber Pad, LH
27	48100-01	Bronze Bearing	59	48039	Rubber Pad, RH
28	04050-02	Retaining Ring	60	48036	Heel Rest
29	04050-06	Bronze Bearing	61	48037	Rubber Pad, Heel Rest
30	48114-01	Grease Fitting	62	48041	Rubber Pad, Safety Pedal

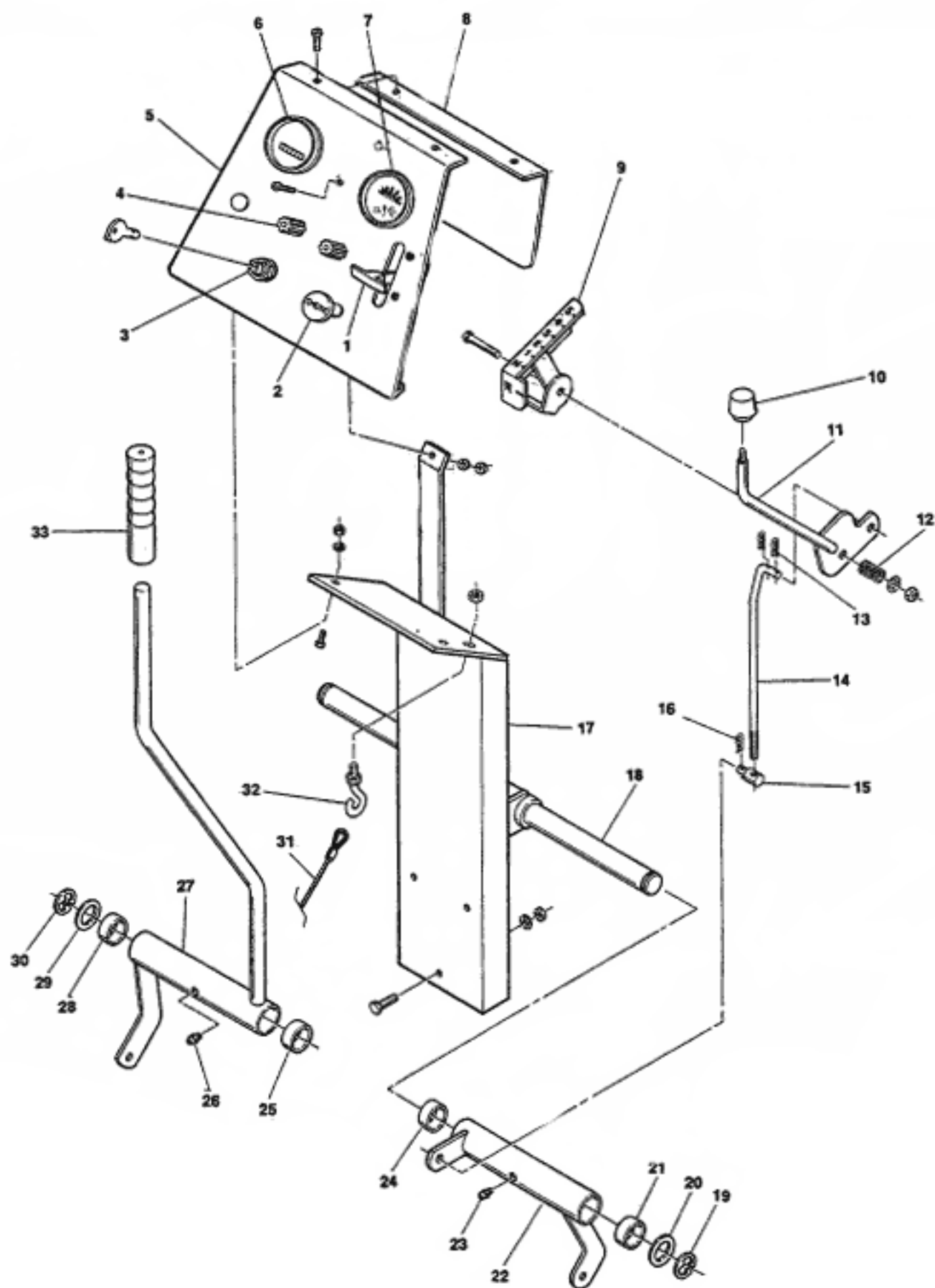
WINCH LIFT SYSTEM



WINCH LIFT SYSTEM

Ref. No.	Part No.	Description
1	304233	Winch Base
2	204009	Shaft Bushing
3	205116	E-Ring
4	304228	Drive Shaft
5	204362	Pressure Plate
6	404164	Ratchet Wheel
7	404163	Pressure Washer
8	204359	Shaft Bushing
9	304381	Winch Handle
10	204364	Handle Spring
11	205015	Handle Nut
12	205011	Hex Locknut 3/8-16
13	205008	Reel Shaft
14	205155	Lock Nut 7/16-14
15	304227	Winch Reel
16	204363	Ratchet Spring
17	404166	Ratchet Spacer
18	404409	Ratchet Pawl
19	205024	Flat Washer
20	205167	Ratchet Bolt
21	48045	Winch Cable Assy.

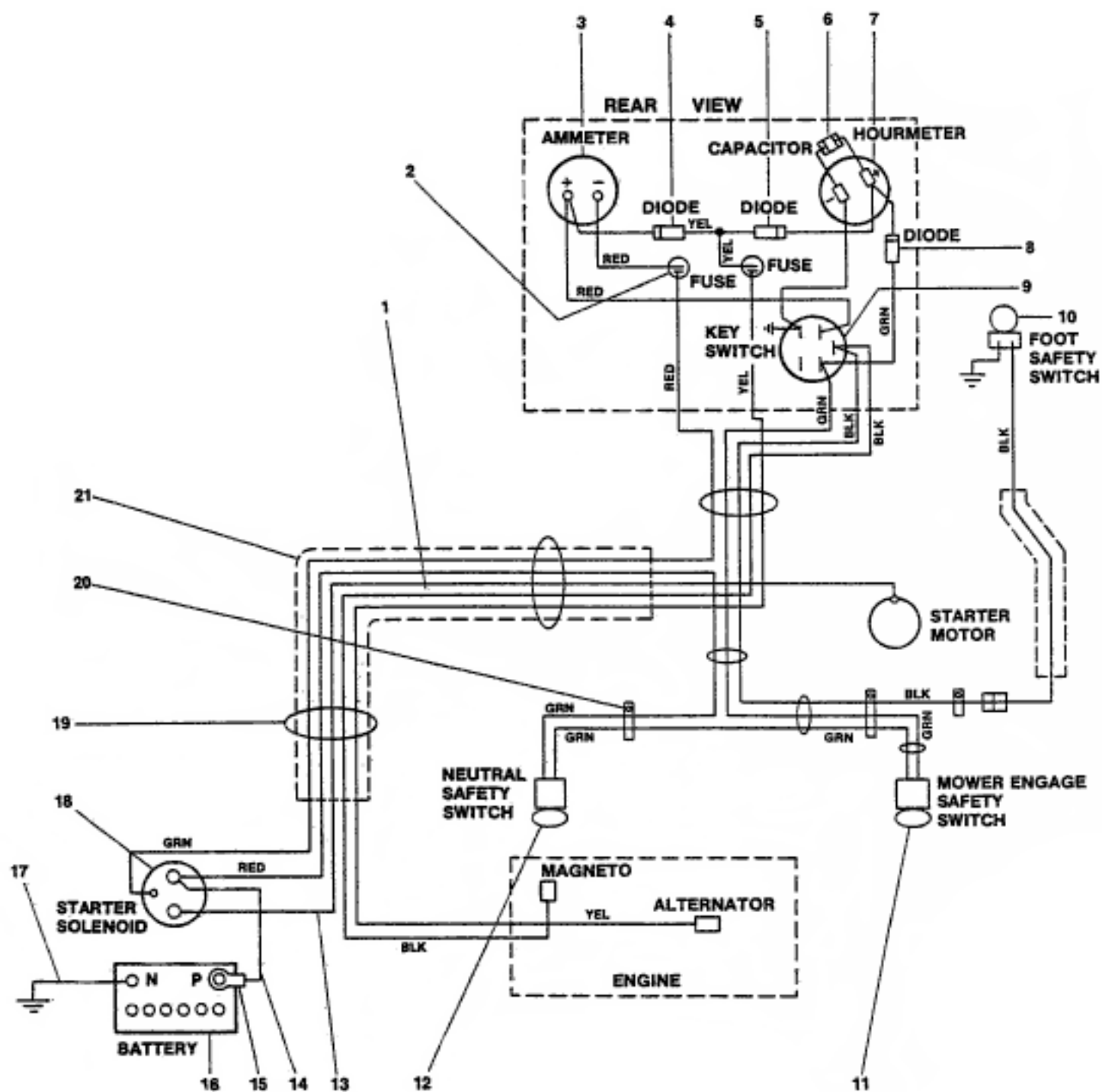
INSTRUMENT PANEL



INSTRUMENT PANEL

Ref. No.	Part No.	Description
1	48090	Throttle Control
2	48091	Choke Control
3	48017	Starter Key Switch
4	48024	Fuse Holder
	48025	Fuse, 20 Ampere
5	42049	Instrument Panel
6	48023	Hourmeter
7	48022	Ammeter
8	42050	Instrument Panel Cover
9	45024	Shift Quadrant Weldment
10	48092	Shifter Knob
11	45023	Shifter Handle Weldment
12	48050	Spring - Shifter Lever
13	04062-01	Hairpin
14	43030	Shift Adjust Rod
15	43032	Swivel Joint
16	04062-01	Hairpin
17	45025	Console Support Weldment
18	43017	Bell Crank Shaft
19	04050-02	Retainer Ring
20	04041-08	Spacer Washer
21	48100-06	Bronze Bearing
22	45021	Shifter Bell Crank Weldment
23	48114-01	Grease Fitting
24	48100-06	Bronze Bearing
25	48100-06	Bronze Bearing
26	48114-01	Grease Fitting
27	45022	Mower Engage Bell Crank Weldment
28	48100-06	Bronze Bearing
29	04041-08	Spacer Washer
30	04050-02	Retainer Ring
31	48045	Winch Cable Assy.
32	04070-03	Eyebolt, 3/8-16
33	48093	Grip, Mower Lever

ELECTRICAL SYSTEM



ELECTRICAL SYSTEM

Ref. No.	Part No.	Description
1	48031	Wiring Harness
2	48024	Fuse Holder
	48025	Fuse
3	48022	Ammeter
4	48123	Diode
5	48123	Diode
6	48124	Capacitor
7	48023	Hour Meter
8	48123	Diode
9	48017	Key Switch
10	48026	Foot Safety Switch
11	48019	Mower Engage Safety Switch
12	48021	Neutral Safety Switch
13	48029-02	Battery Cable
14	48029-03	Battery Cable
15	48126	Rubber Boot
16	48015	Battery
17	48029-01	Battery Cable
18	48016	Starter Solenoid
19	48028	Cable Tie
20	48030	Cable Clamp
21	48033	Plastic Conduit

DECALS

48071	OPEL Danger
48072	Heavy Duty Commercial
48073	Danger - Rotating Blades
48074	Shifter Index
48076	Throttle
48077	Scag's Logo
48078	Mower Engage
48079	Key Switch
48088	Brake System
48089	Maintenance

TOUCH-UP PAINT

48008	Scag's Gold	Aerosol
-------	-------------	---------

And finally:

PLEASE BE CAREFUL

1. Keep all shields in place, especially grass discharge guard.
2. Stop machine and remove spark plug wire to adjust or service.
3. When mechanism becomes clogged, stop engine before cleaning.
4. Keep hands, feet and clothing away from power-driven parts.
5. Keep off implement unless seat or platform is provided.
6. Keep others off.

**FAILURE TO FOLLOW CAUTIOUS OPERATING PRACTICES CAN RESULT IN SERIOUS OPERATOR INJURY.
BESIDES, WE WOULD LIKE YOU TO CONTINUE TO ENJOY AND PROFIT BY USING OUR PRODUCTS.**